

Charter Hall

8 Rodborough Rd Frenchs Forest NSW

Nov. 04, 2022

For Council



Charter Hall

DESCRIPTION
Charter Hall -
8 Rodborough Rd Frenchs Forest NSW

JOB NO.
139862

A3 ☐ DO NOT SCALE

CONSTRUCTION DRAWING REFERENCES
NO CONST. DWG REF.

DRAWING TYPE PRELIMINARY
CLIENT SPECIFIC SPECS

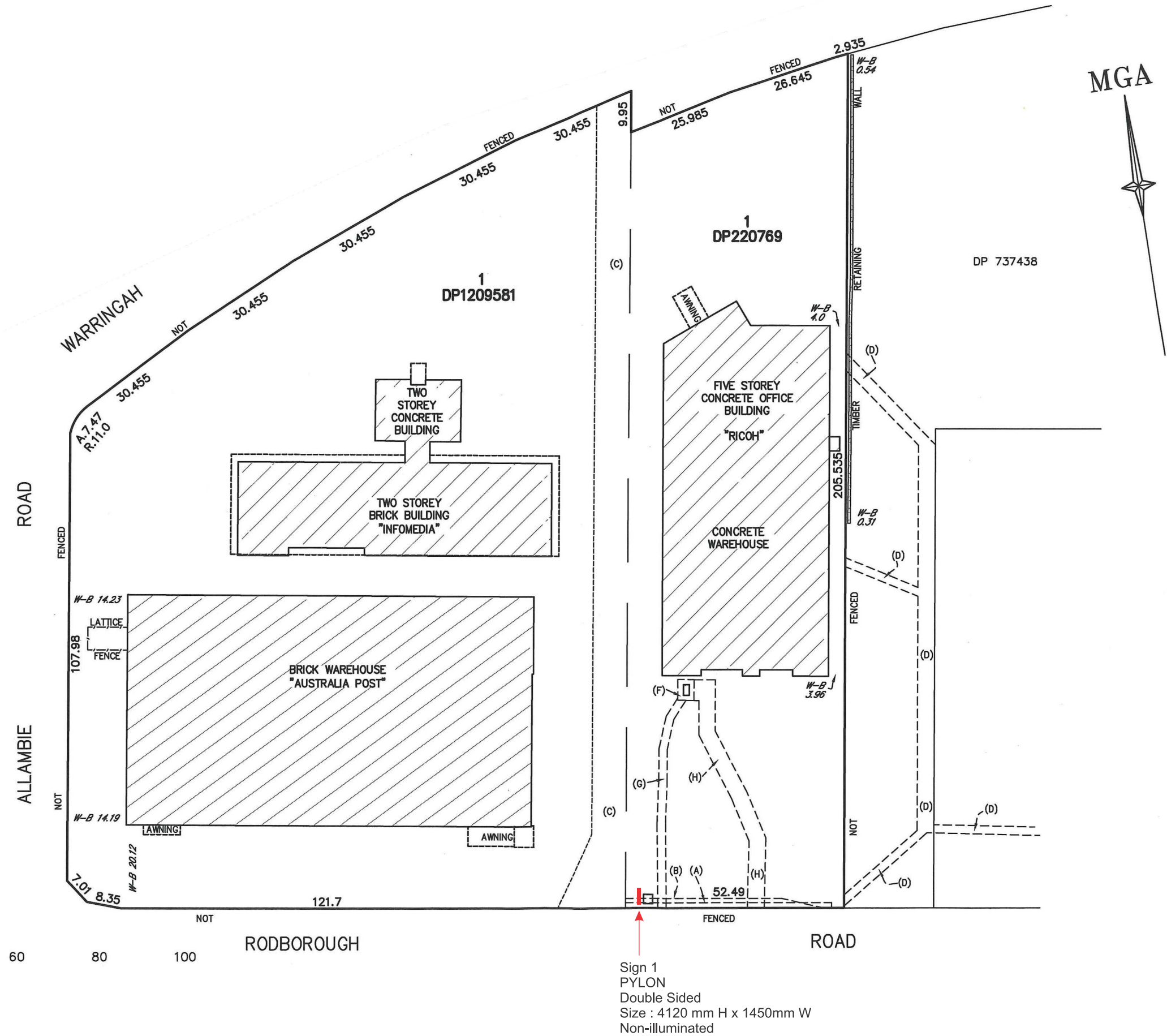
Please note that original source the colour shifts may occur through adhesion and printer setting interference. The colour Representation shown in this artwork may not visually represent the nominated colour. It is the customer's responsibility to check and nominated colour reference for accuracy.

GENERAL NOTES

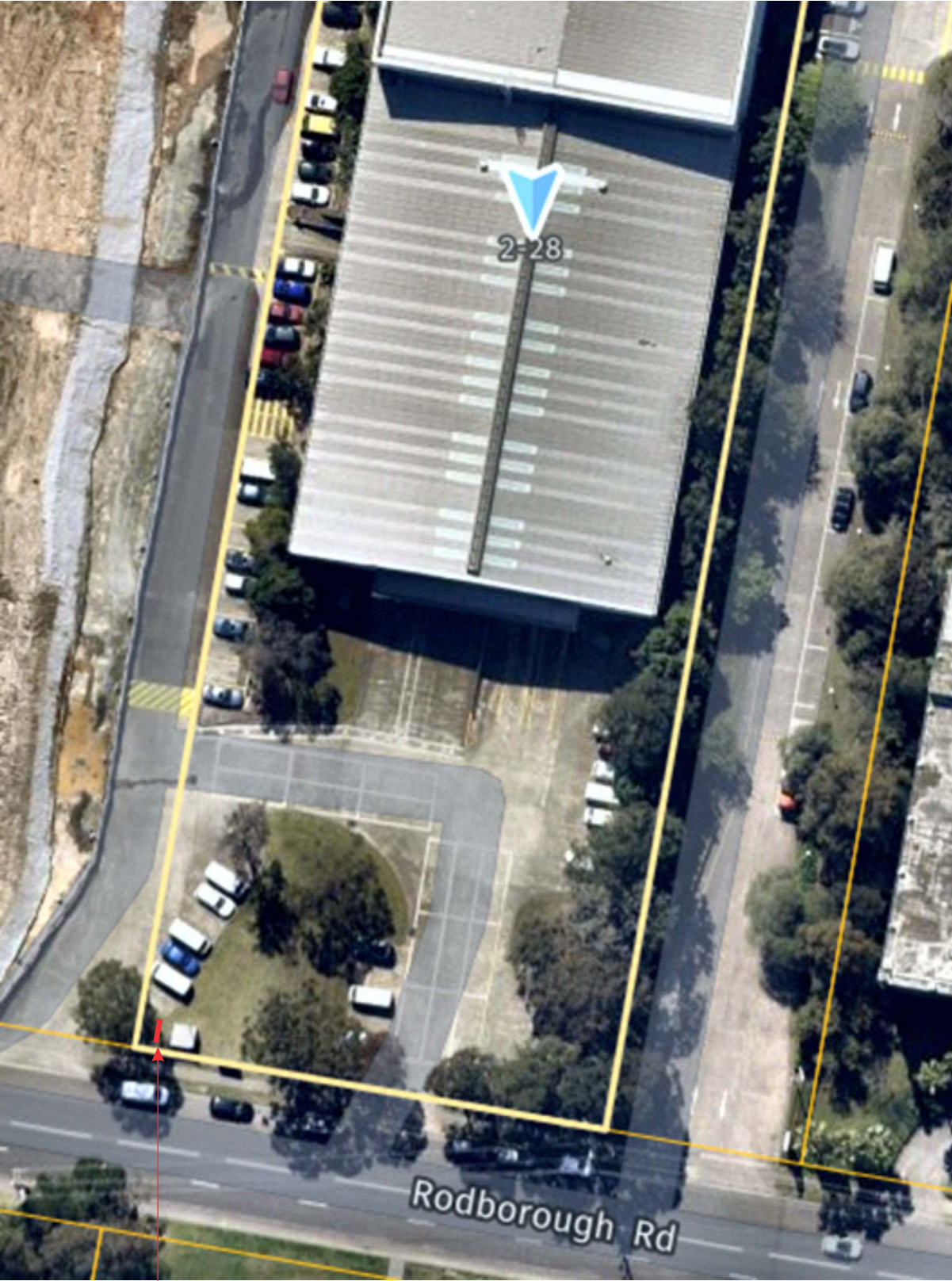
| | | | | |
|---|---------------------|-----|----|----------|
| E | UPDATED ARTWORKS | ASP | SG | 04.11.22 |
| D | ADDITIONAL MONTAGES | ASP | SG | 02.11.22 |
| C | UPDATE SOME DETAILS | ASP | SG | 28.10.22 |
| B | PYLON NEW LOCATION | ASP | SG | 24.10.22 |
| A | UPDATED ARTWORK | ASP | SG | 12.09.22 |
| Ø | ORIGINAL ISSUE | ASP | SG | 26.07.22 |

| REV. | AMENDMENTS | DWN | CKD | DATE |
|----------------|------------|-----|-----|-------|
| DRAWING NUMBER | | | | ISSUE |
| CH00189-01 | | | | E |

Site Plan Charter Hall - 8 Rodborough Rd Frenchs Forest NSW



Site Plan Charter Hall - 8 Rodborough Rd Frenchs Forest NSW



Sign 1
PYLON
Double Sided
Size : 4120 mm H x 1450mm W
Non-illuminated



| | | | | |
|---|---------------------|-----|-----|----------|
| <div><div><div>S</div><div>SIGNSPEC</div></div><div>ALL ABOUT DESIGN</div><div>A division of the ALBERT SMITH GROUP</div><div>Ph:07 3395 9888 Fax:07 3891 0713 signspec@asgroup.com.au</div></div> <div><div><div><div>This design has been produced by and is the sole and exclusive property of SIGNSPEC AUSTRALIA. A.C.N. 009073803 who reserve all rights of reproduction and construction in any form whatsoever and to whom this design must be referred for all future design work. The model for you of this design shall be evidence of your acceptance of these conditions. © COPYRIGHT ALL RIGHTS RESERVED</div><div>The materials nominated within this specification, whether designated by Signs spec or others, are proposed to satisfy the nominated design intent for the product. Compliance with the National Construction Code for the use of those nominated materials to suit the unique needs of the project, and in particular the appropriate fire rating requirements, remains the responsibility of others. Neither Signs spec nor the Albert Smith Group purport themselves to be experts in this field, and ultimate approval of the specifications should remain within the Building Permit/Certification process.</div></div></div></div> | | | | |
| <div>Charter Hall<div></div></div> | | | | |
| <div>DESCRIPTION</div> <div>Charter Hall - 8 Rodborough Rd Frenchs Forest NSW</div> | | | | |
| <div>JOB NO.</div> <div>139862</div> | | | | |
| <div>A3<div></div><div>DO NOT SCALE</div></div> | | | | |
| <div>CONSTRUCTION DRAWING REFERENCES</div> <div>NO CONST. DWG REF.</div> | | | | |
| <div>DRAWING TYPE</div> <div>PRELIMINARY</div> | | | | |
| <div>CLIENT SPECIFIC SPECS</div> | | | | |
| <div>Please note that original source file colour shifts may occur through software and printer setting interference. The colour Representation shown in this artwork may not visually represent the nominated colour. It is the customer's responsibility to check and nominated colour reference for accuracy.</div> | | | | |
| <div>GENERAL NOTES</div> | | | | |
| <div></div> | | | | |
| E | UPDATED ARTWORKS | ASP | SG | 04.11.22 |
| D | ADDITIONAL MONTAGES | ASP | SG | 02.11.22 |
| C | UPDATE SOME DETAILS | ASP | SG | 28.10.22 |
| B | PYLON NEW LOCATION | ASP | SG | 24.10.22 |
| A | UPDATED ARTWORK | ASP | SG | 12.09.22 |
| Ø | ORIGINAL ISSUE | ASP | SG | 26.07.22 |
| REV. | AMENDMENTS | DWN | CKD | DATE |
| DRAWING NUMBER | | | | ISSUE |
| CH00189-01 | | | | E |

SIGNAGE - ARTWORK

Qty: 1

3 double sided sign boxes.

- 720mm H x 1300mm W – Address
- 1430mm H x 1300mm W - Allowance for 3 tenancy graphics
- 720mm H x 1300mm W - Charter Hall Text & Logo

Notes:

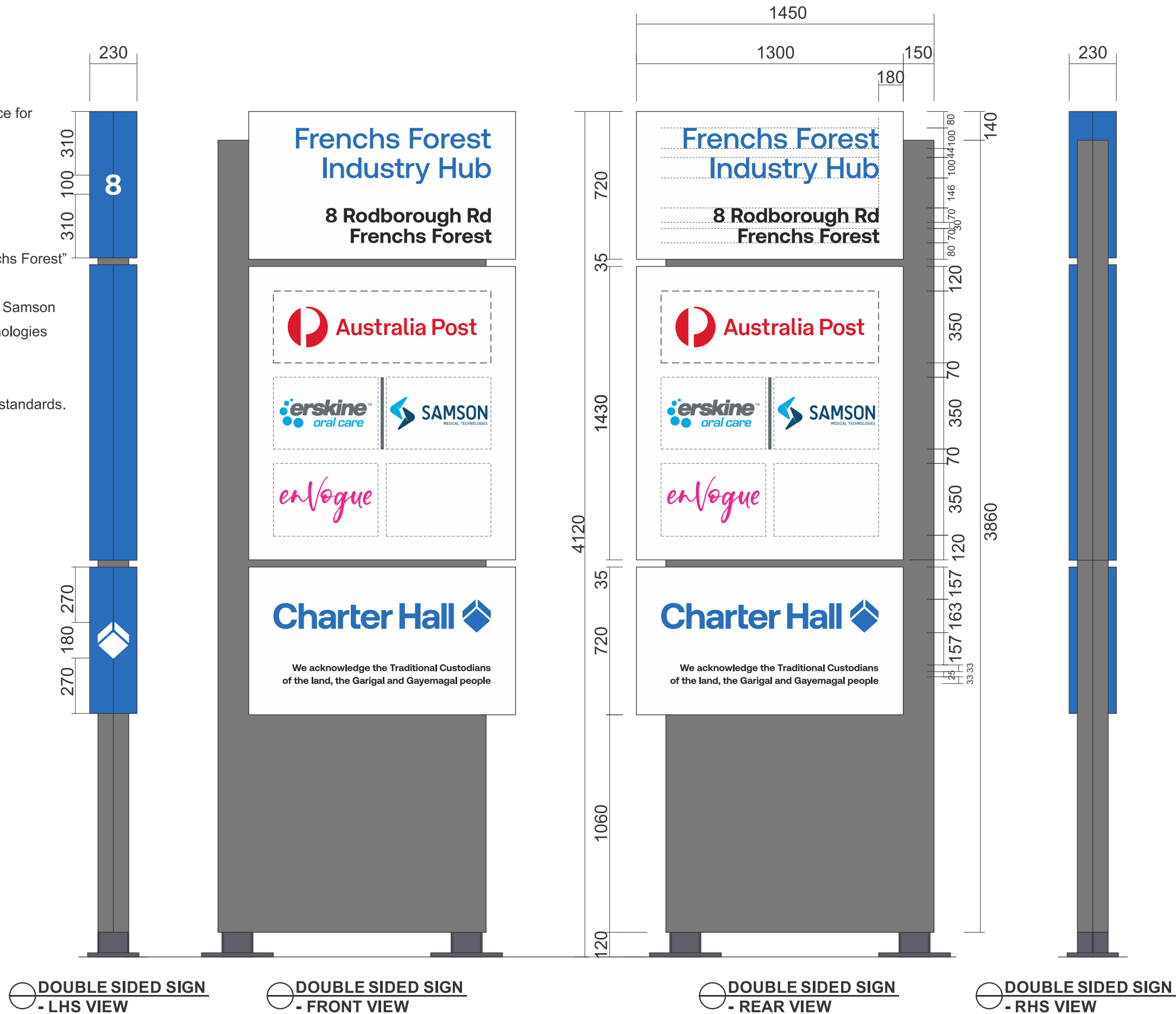
Address: "8 Rodborough Road Frenchs Forest"

Tenancy graphics: Australia Post,
Erskine Products / Samson
Medical Technologies
enVogue

Sizes, colours and layout as per CH standards.

Located in entry area

Non-illuminated



1:20