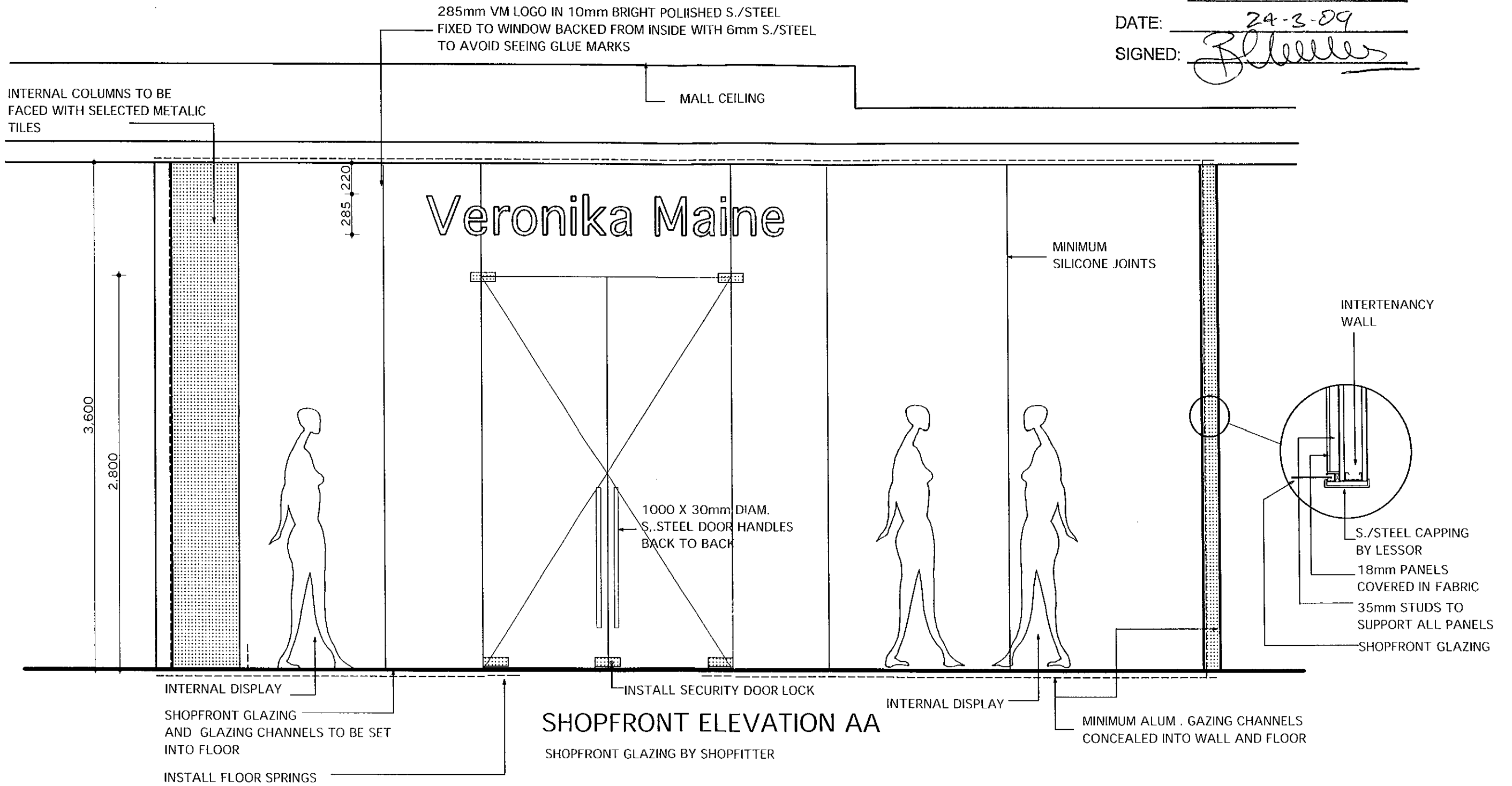
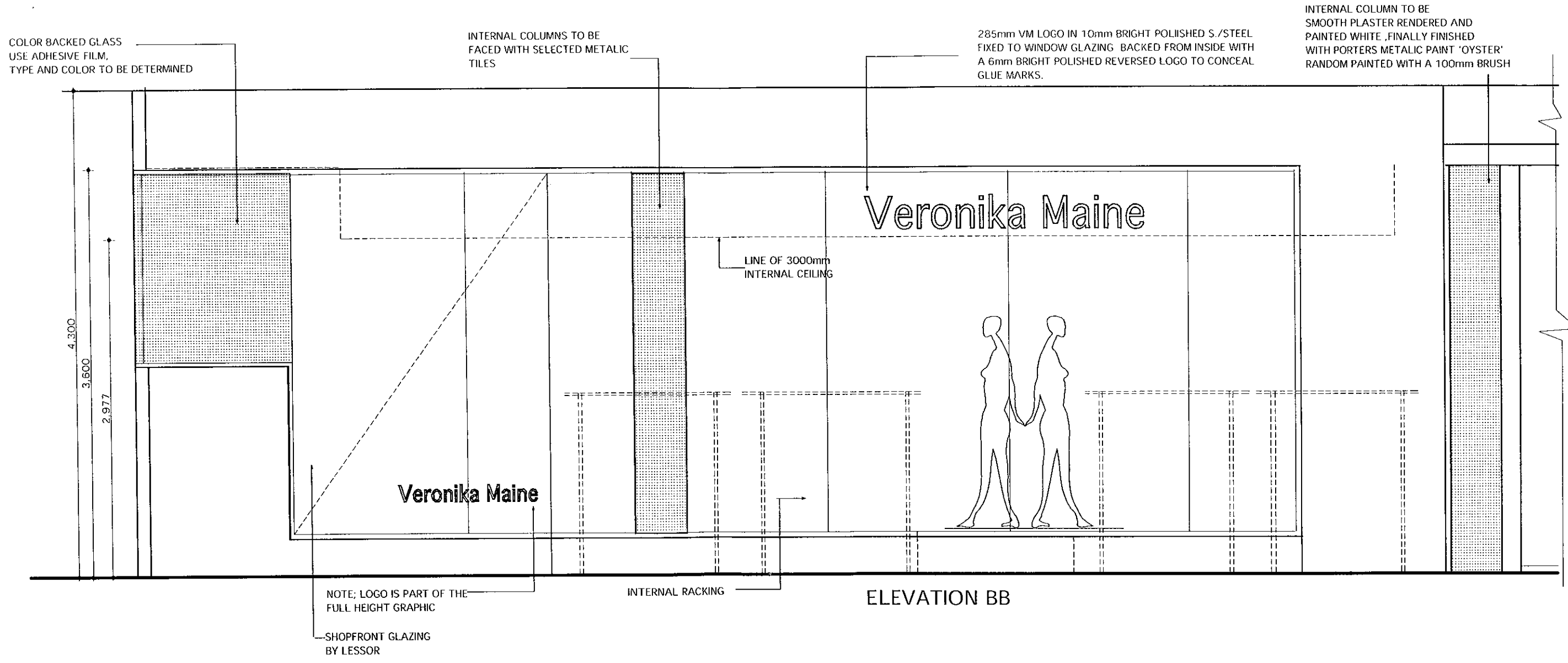


CDC No: 250(52)

DATE: 24-3-09

SIGNED: [Signature]





COLOR BACKED GLASS  
USE ADHESIVE FILM.  
TYPE AND COLOR TO BE DETERMINED

INTERNAL COLUMNS TO BE  
FACED WITH SELECTED METALIC  
TILES

285mm VM LOGO IN 10mm BRIGHT POLISHED S./STEEL  
FIXED TO WINDOW GLAZING BACKED FROM INSIDE WITH  
A 6mm BRIGHT POLISHED REVERSED LOGO TO CONCEAL  
GLUE MARKS.

INTERNAL COLUMN TO BE  
SMOOTH PLASTER RENDERED AND  
PAINTED WHITE ,FINALLY FINISHED  
WITH PORTERS METALIC PAINT 'OYSTER'  
RANDOM PAINTED WITH A 100mm BRUSH

4.300  
3.600  
2.977

LINE OF 3000mm  
INTERNAL CEILING

Veronika Maine

Veronika Maine

NOTE; LOGO IS PART OF THE  
FULL HEIGHT GRAPHIC

SHOPFRONT GLAZING  
BY LESSOR

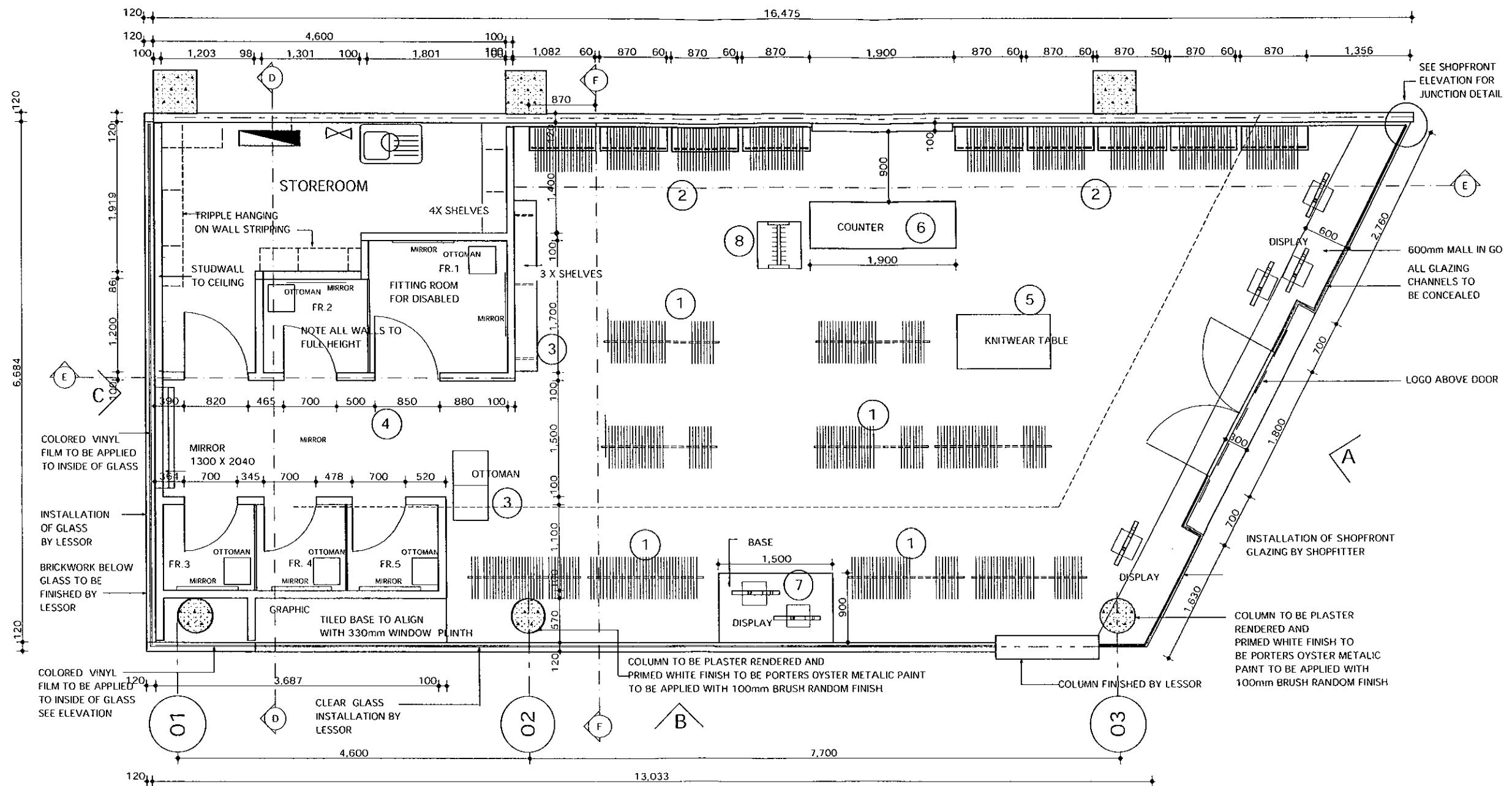
INTERNAL RACKING

ELEVATION BB

61 AVENUE RD MOSMAN 2088 TEL; 02 99698187 / FAX; 02 99698115 HANS BRUST DESIGN  
PROPOSED VERONIKA MAINE AT TENANCY; 001 STOCKLAND,BALGOWLAH AREA 100m2 SHOPFRONT , SCALE; 1:35 DATE; 19. 12. 08 DRG; 02 OF 15

DAVIS LANGDON AUSTRALIA  
This Drawing/Specification/Detail/  
Attachment/Conditions forms part of  
Complying Development  
Certificate No: ..... 251052

DAVIS LANGDON AUSTRALIA  
This Drawing/Specification/Detail/  
Attachment/Conditions forms part of  
Complying Development  
Certificate No: .....



**SPECIFICATION;**

**SHOPFRONT GLAZING**

ALL INSTALLATION OF GLASS TO SHOPFRONT SHALL COMPLY WITH THE AUSTRALIAN STANDARDS 1288

**CEILING**

ALL CEILINGS SHALL BE CONTINUOUS SET PLASTERBOARD CEILINGS AT VARIOUS HEIGHTS AS INDICATED ON THE DRAWING. ALL SURFACES SHALL BE SMOOTH AND READY TO TAKE PAINTWORK.

**PAINTWORK**

PAINT CEILING AT 3600mm IN DULUX; ENVIRO 2 'LINCEED' SATIN LOWER CEILING TO BE PAINTED IN DULUX; ENVIRO 2.; 'ANTIQUE WHITE USA'

THE ENTIRE WALLS NOT COVERED IN FABRIC SHALL BE PAINTED IN DULUX; ENVIRO 2 'LINCEED' THE ROUND COLUMNS INSIDE THE SHOP SHALL BE SMOOTH RENDERED -PAINTED WHITE AND FINISHED WITH PORTERS METALIC PAINT 'OYSTER'. USE A 100mm BRUSH AND APPLY A RANDOM FINISH

**FLOORFINISH**

THE ENTIRE FLOOR SHALL BE LAYED IN 600 X600mm SADLERSTONE TILES COLOR; 'MOCHA' SMOOTH

**ELECTRICAL**

AS PER ELECTRICAL LAYOUT. ALL CONDUITS SHALL BE CONCEALED INTO WALLS AND FLOOR

**METALWORK**

ALL METALWORK SHALL BE IN S. STEEL.

**SPRINKLER & AIRCONDITIONING**

ALL SPRINKLERS AND AIRCONDITIONING INSTALLATION SHALL BE DETERMINED AND INSTALLED BY THE LESSORS CONTRACTORS

**LOGO;**

ALL FABRICATIONS OF LOGOS SHALL MATCH WITH LOGO AS SUPPLIED BY THE TENANT.

**TRADESMANSHIP;**

ALL INSTALLATIONS SHALL BE OF 1.5T CLASS TRADESMANSHIP

**NOTE;**

CHECK ALL MEASUREMENTS AT THE SITE BEFORE COMMENCING ANY WORK

**AUTHORITIES;**

ALL INSTALLATIONS BY THE SHOPFITTER SHALL COMPLY WITH THE LOCAL BUILDING AUTHORITIES.

61 AVENUE RD MOSMAN 2088 TEL; 02 99698187 / FAX; 02 99698115

**HANS BRUST DESIGN**

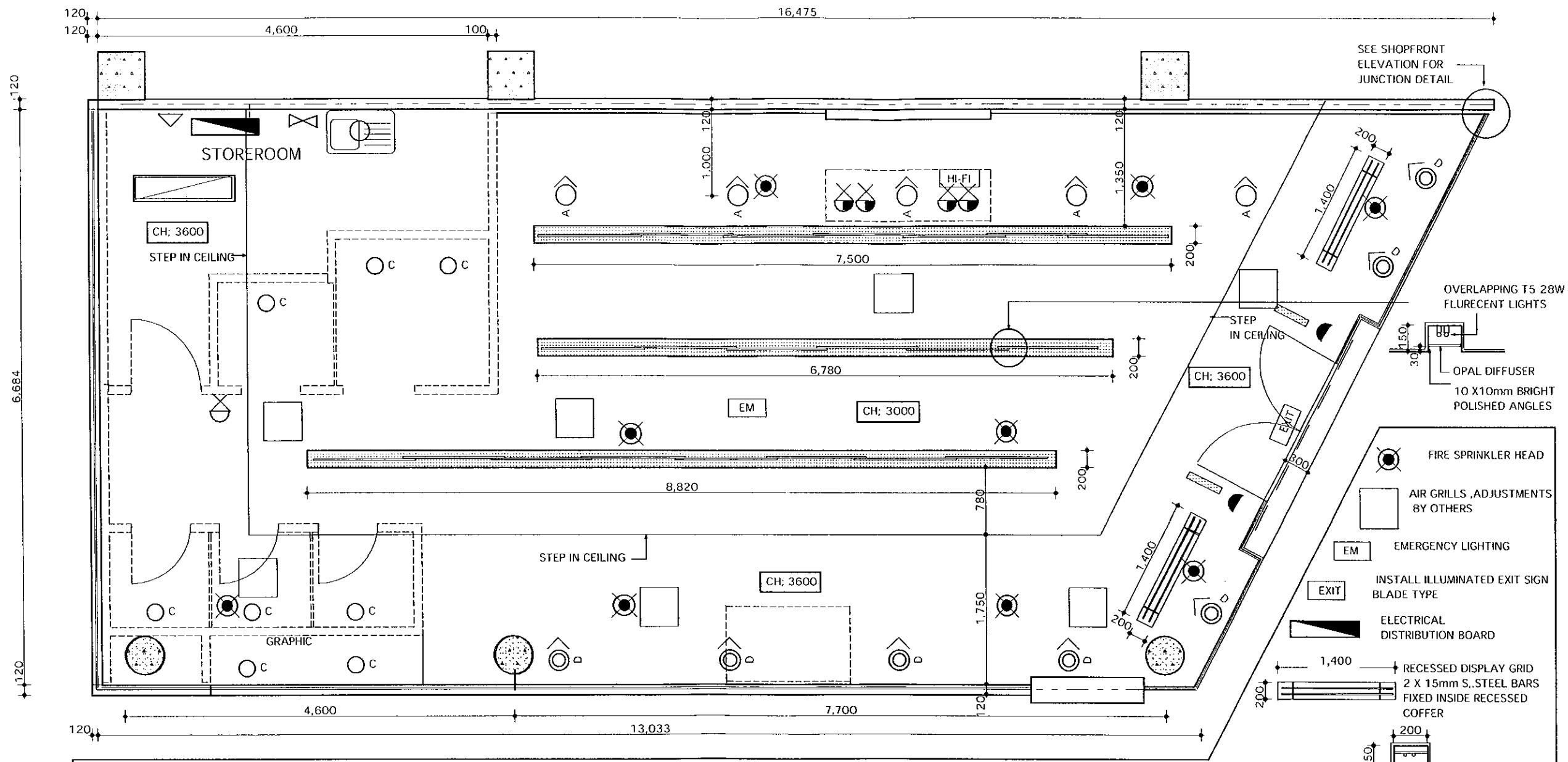
PROPOSED VERONIKA MAINE AT TENANCY; 001 STOCKLAND, BALGOWLAH AREA 100m2 FLOOR PLAN, 130m2, SCALE; 1:50 DATE; 19.12.08 DRG; 04 OF 15

**DAVIS LANGDON AUSTRALIA**

This Drawing/Specification/Detail/  
Attachment/Conditions forms part of

Complying Development

Certificate No: ..... 25052 .....

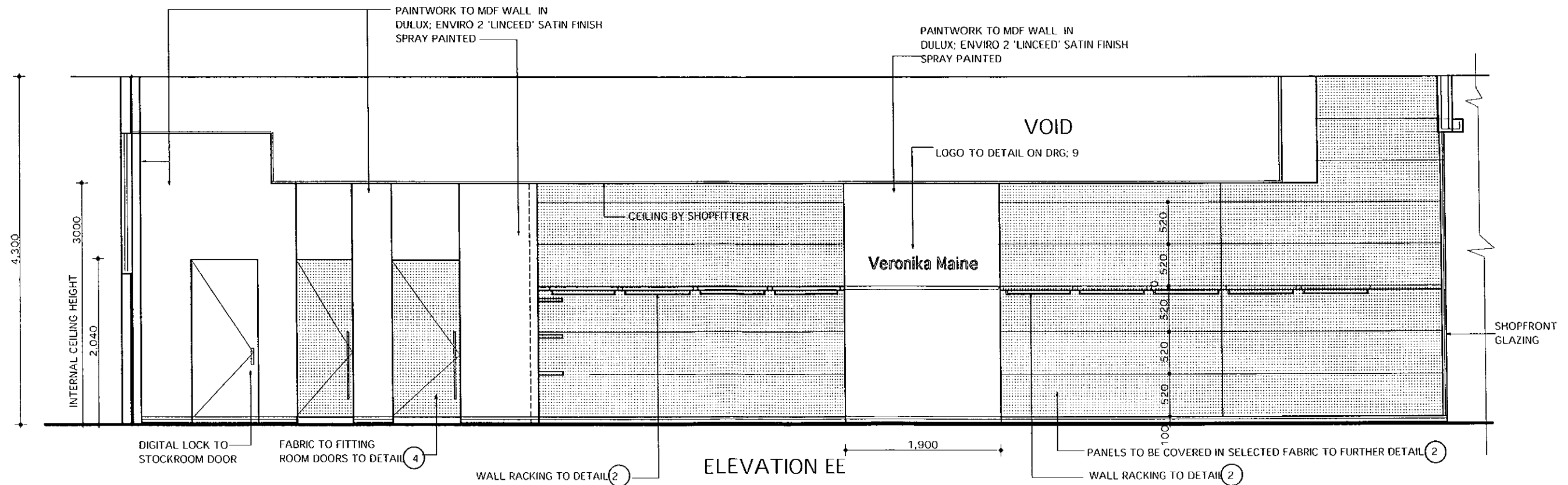
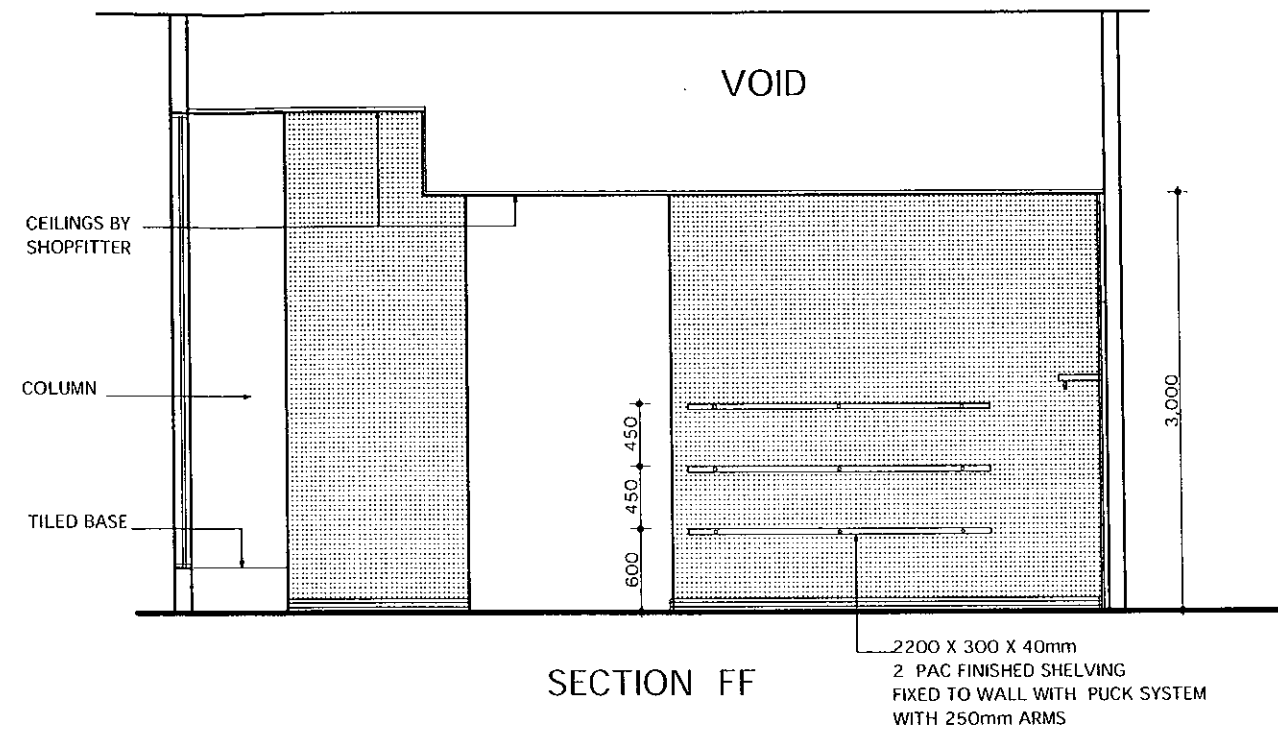
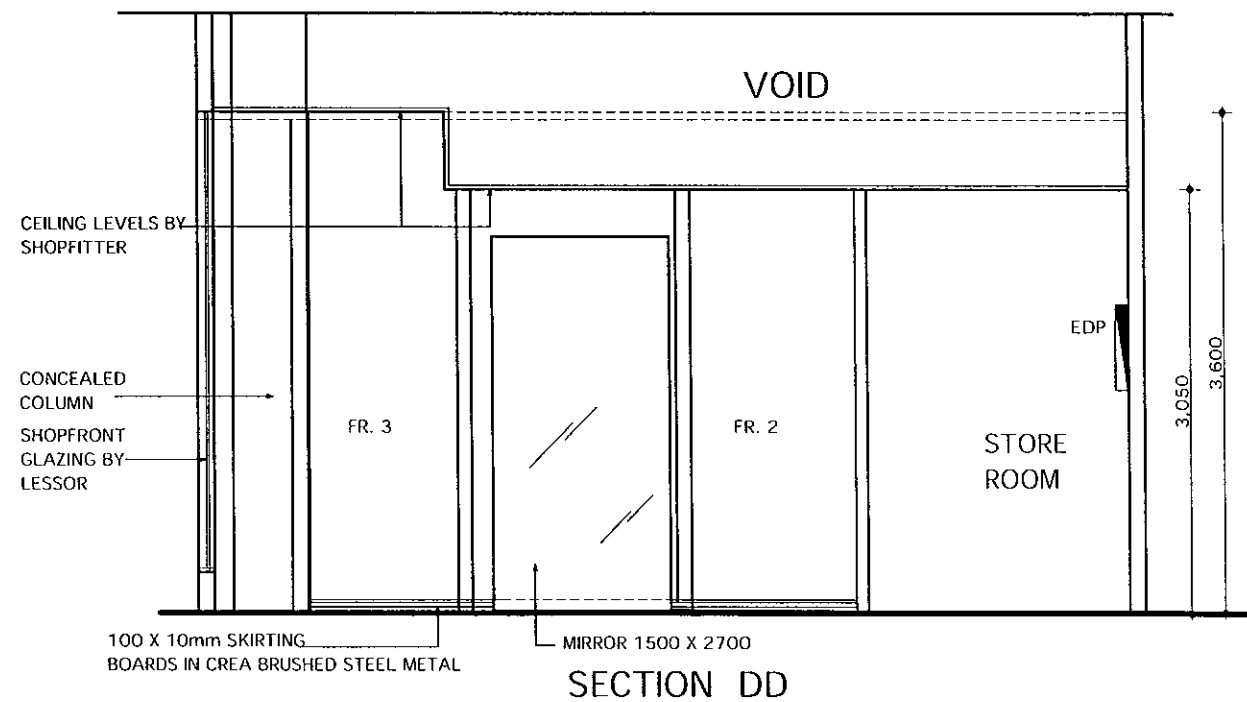


**LEGEND;**

○ C	ORION QR -C51 WHITE 12/35W		RECESSED SINGLE 28W T5 FLUORECENT LIGHTS OVERLAPPING NO MORE NO LESS THAN 120mm WITH CONTINUES DIFFUSER		HI- FI SYSTEM EQUIPMENT SUPPLY BY TENANT
⊙ A	XAL SASSO 150K 1X35W HIT-G12 60 DEGREE ROUND ADJUSTABLE LOW GLARE METAL HALIDE DOWNLIGHT.		CEILING MOUNTED 28W T5 FLUORECENT COFFER WITH PRISMATIC DIFFUSERS		LOUD SPEAKERS TO BE FIXED TO WALL AT CEILING HEIGHT ; L1 AND R1 TO HAVE SEPARATE VOLUME CONTROL. NOTE; USE CORRECT WIRING , MONSTER COMPACT XP SPEAKER CABLE
⊙ B	XAL SASSO 150S 1X35W HIT-G12 60DEGREE ROUND FIXED LOW GLARE METAL HALIDE DOWNLIGHT		DOUBLE POWERPOINT 10AMP		TELEPHONE DIRECT LINE
⊙ D	XAL SASSO 150K 1X70W HIT-CE G12 60 DEGREE ROUND ADJUSTABLE		SINGLE POWERPOINT 10AMP		FAX MACHINE
			POWER OUTLET FOR SESORMATIC, NO SWITCH		SMOKE DETECTOR
					SENSORMATIC SECURITY SYSTEM

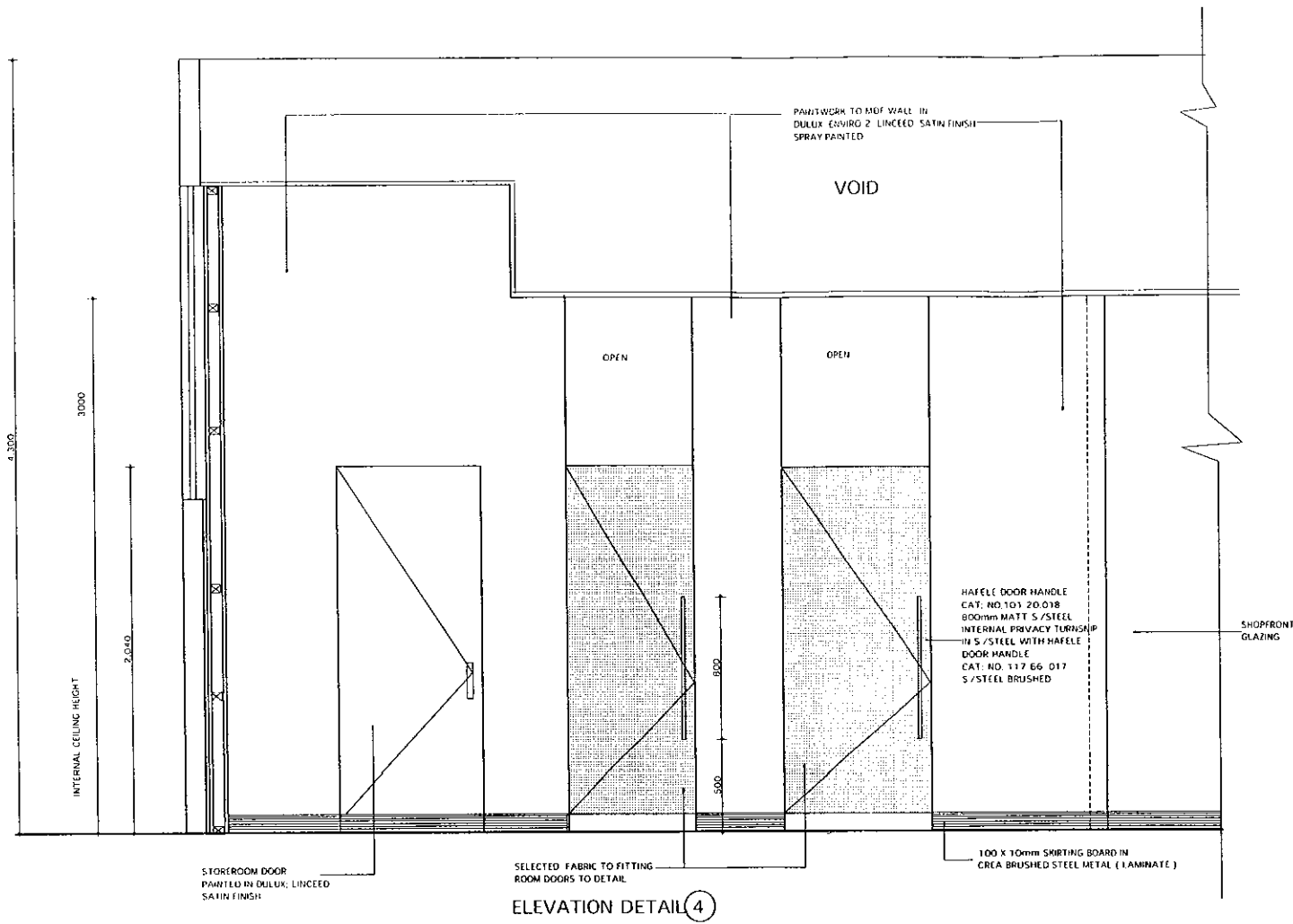
- SEE SHOPFRONT ELEVATION FOR JUNCTION DETAIL
- OVERLAPPING T5 28W FLURECENT LIGHTS
- OPAL DIFFUSER 10 X10mm BRIGHT POLISHED ANGLES
- FIRE SPRINKLER HEAD
- AIR GRILLS ,ADJUSTMENTS BY OTHERS
- EM EMERGENCY LIGHTING
- EXIT INSTALL ILLUMINATED EXIT SIGN BLADE TYPE
- ELECTRICAL DISTRIBUTION BOARD
- RECESSED DISPLAY GRID 2 X 15mm S.,STEEL BARS FIXED INSIDE RECESSED COFFER
- RECESSED DISPLAY GRID 2 X 15mm S.,STEEL BARS WIT 2 CROSS BARS FIXED INSIDE RECESSED COFFER

DAVIS LANGDON AUSTRALIA  
 This Drawing/Specification/Detail/  
 Attachment/Conditions forms part of  
 Complying Development  
 Certificate No: 250152

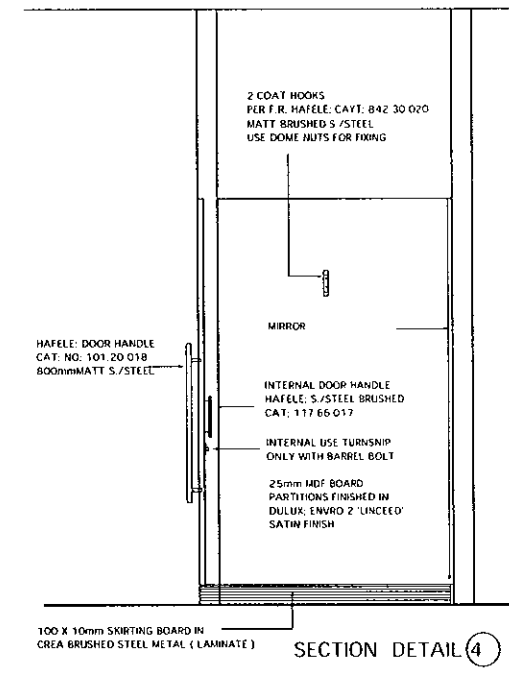


61 AVENUE RD MOSMAN 2088 TEL; 02 99698187 / FAX; 02 99698115 HANS BRUST DESIGN  
 PROPOSED VERONIKA MAINE AT TENANCY; 001 STOCKLAND, BALGOWLAH AREA 002, BALGOWLAH NSW AUSTRALIA  
 DAVIS LANGDON AUSTRALIA  
 SCALE: 1:50 DATE: 19.12.08 DRG; 06 OF 15

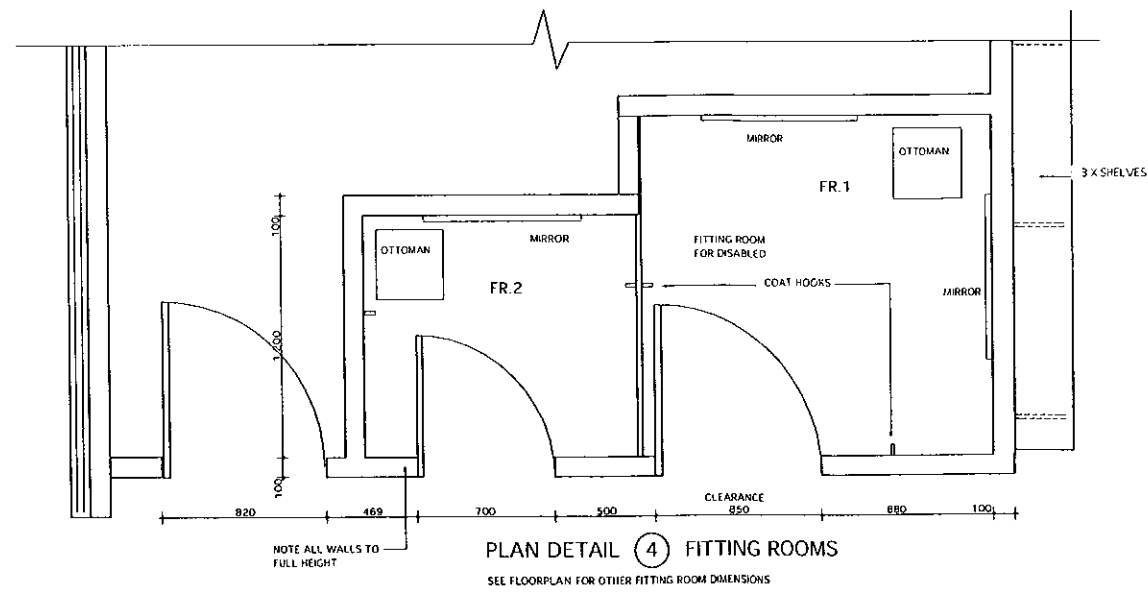
This Drawing/Specification/Detail/  
 Attachment/Conditions forms part of  
 Complying Development  
 Certificate No: ..... 250152



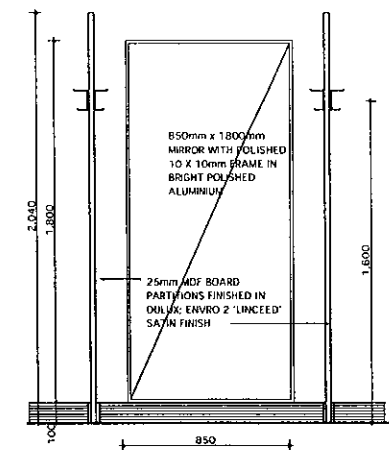
ELEVATION DETAIL 4



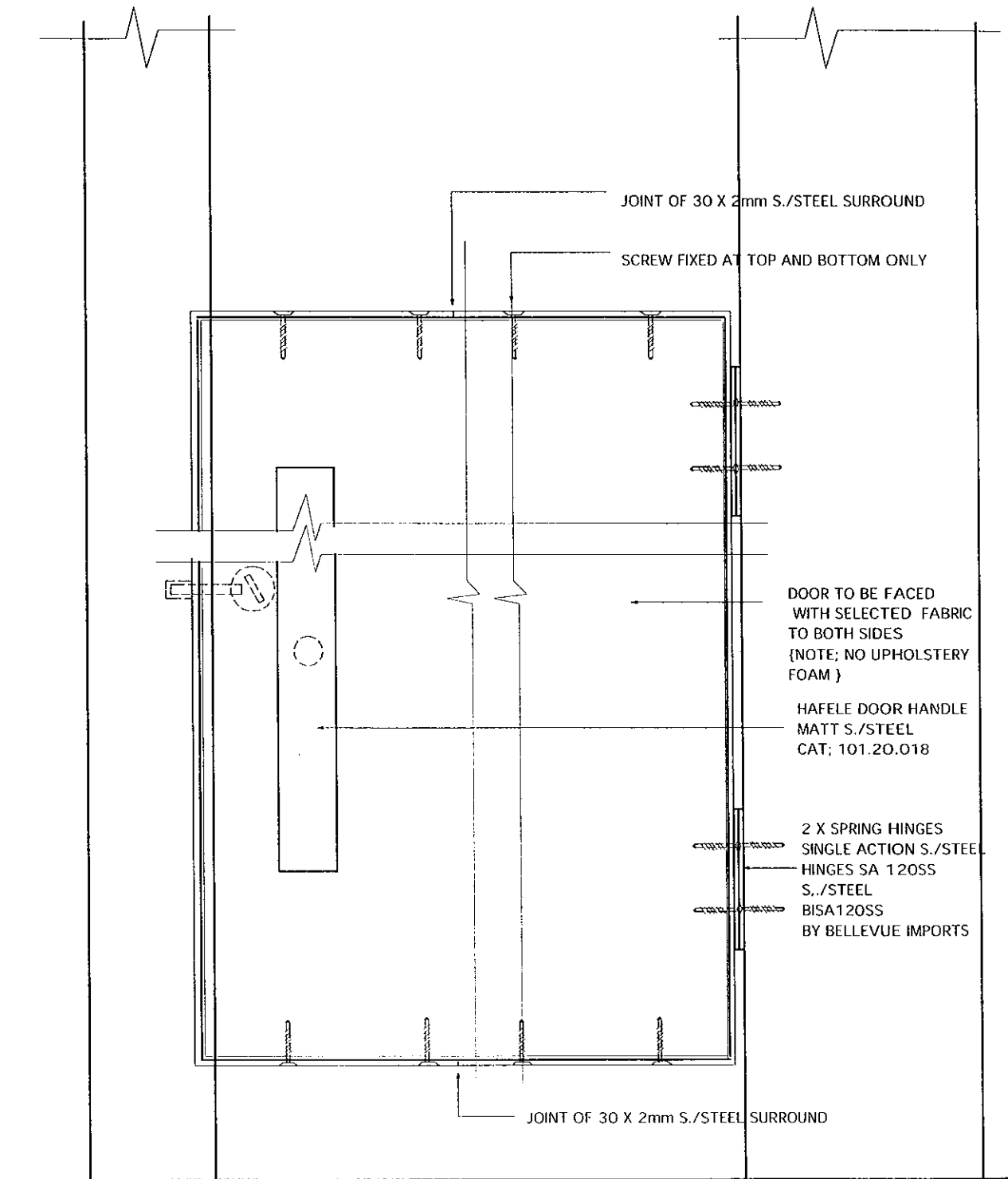
SECTION DETAIL 4



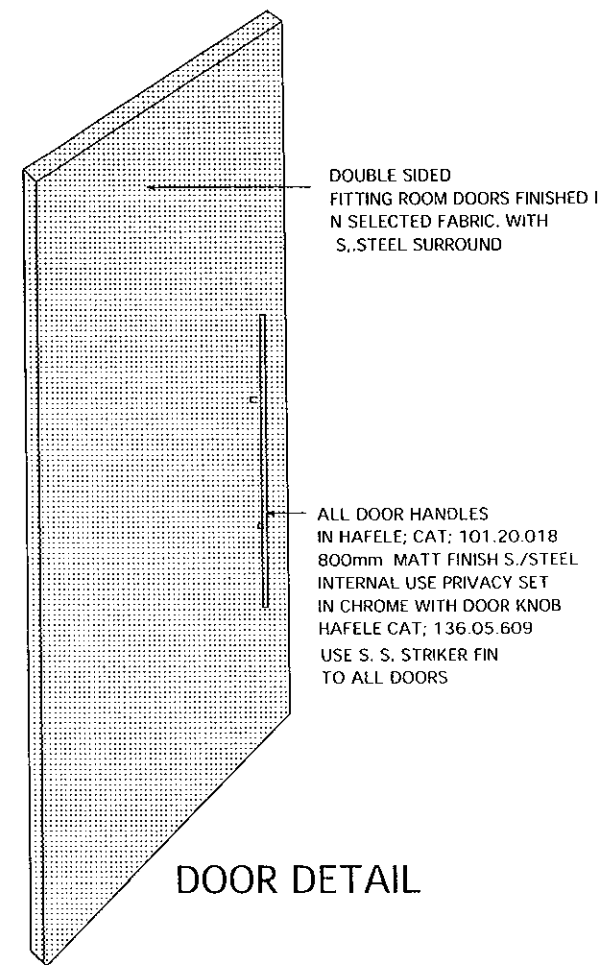
PLAN DETAIL 4 FITTING ROOMS



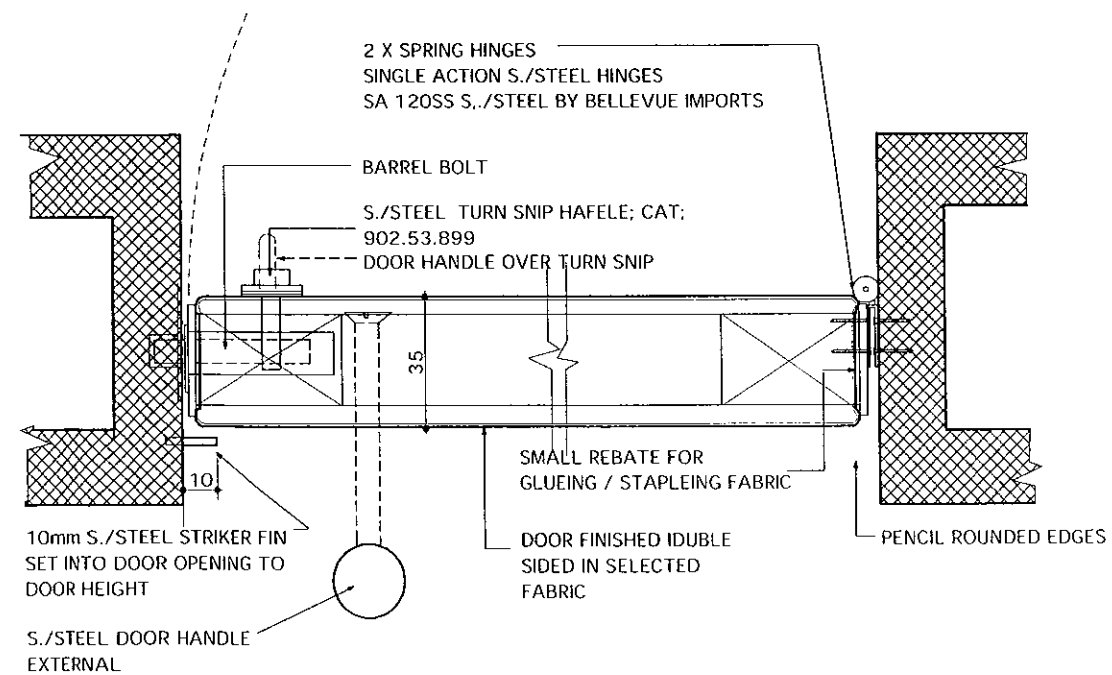
This Drawing/Specification/Detail/  
Attachment/Conditions forms part of  
Complying Development  
Certificate No: .....250152



ELEVATION DETAIL FOR FITTING ROOM DOORS

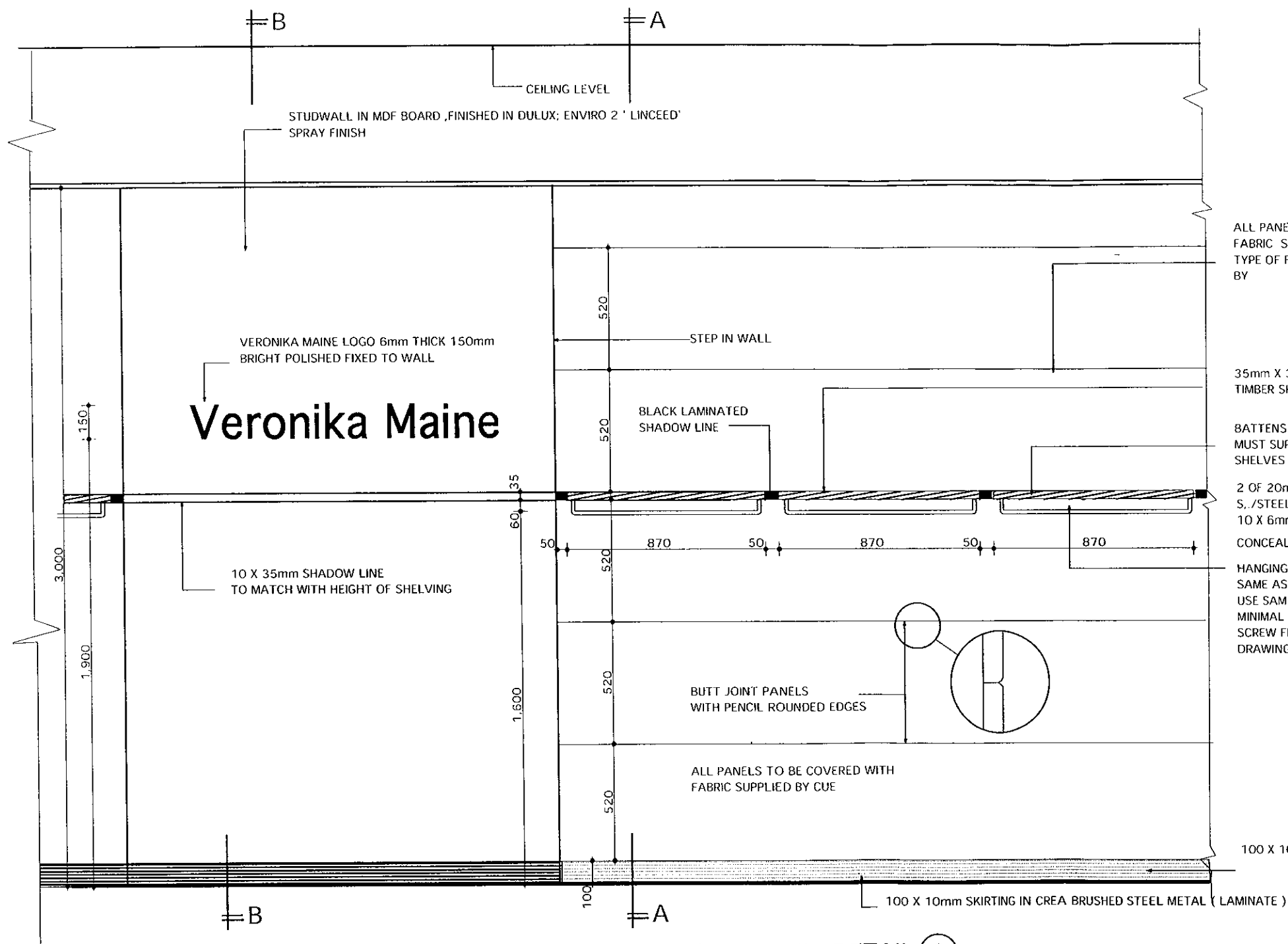


DOOR DETAIL



PLAN SECTION FOR FITTING ROOM DOORS

DAVIS LANGDON AUSTRALIA  
 This Drawing/Specification/Detail/  
 Attachment/Conditions forms part of  
 Comp'ing Development  
 Certificate No: ..... 250152 .....



ALL PANELS TO BE COVERED WITH FABRIC SUPPLIED BY CUE  
TYPE OF FABRIC; OMINQUE KIEFER BY

35mm X 300 X 715 mm TIMBER SHELVES

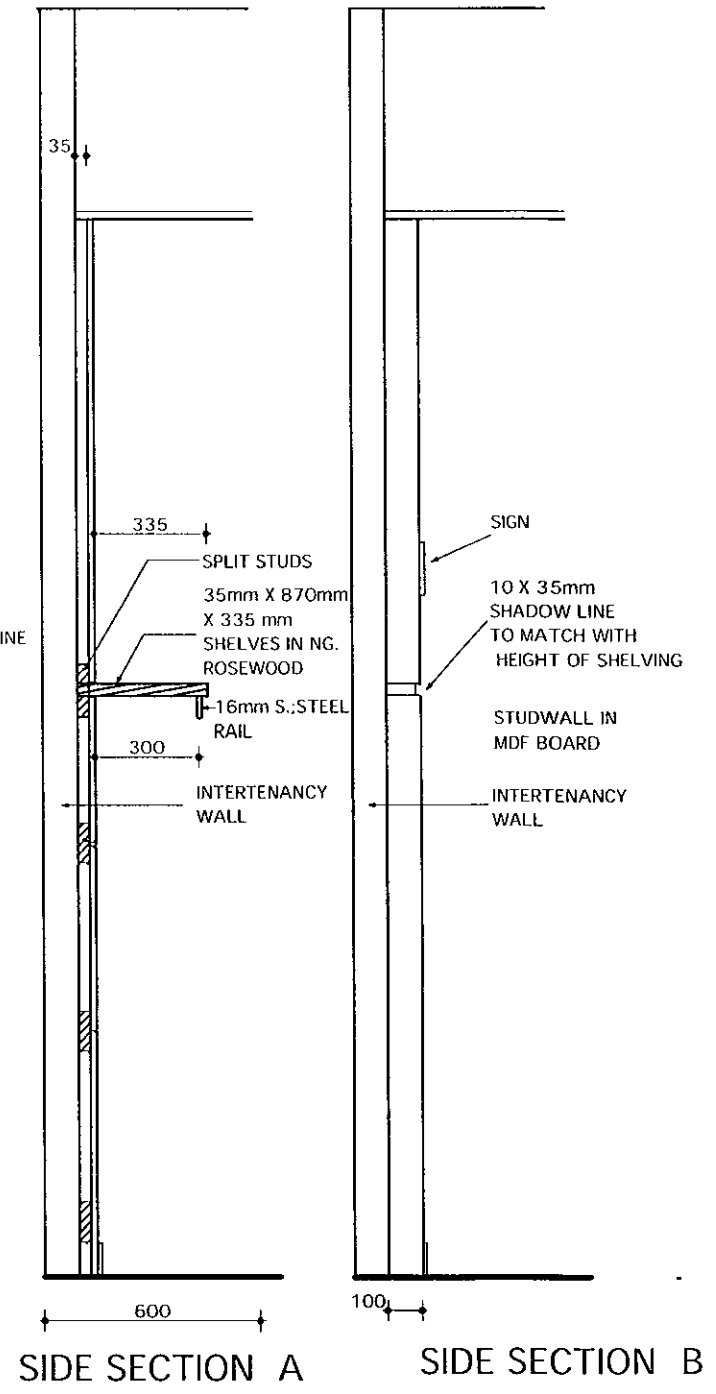
BATTENS EITHER SIDE OF OF SHELVES MUST SUPPORT FULL WEIGHT OF SHELVES WITH STOCK WITHOUT DECLINE

2 OF 20mm DIAM. x 25mm LONG S./STEEL FRONT HANGERS WITH 10 X 6mm END PINS

CONCEALED FIXING BEHIND PANEL

HANGING RAILS TO BE THE SAME AS AS RAILS ON RACKS. USE SAME DIAM. AND FINISH MINIMAL R IN CORNERS. SCREW FIXED AS PER DETAIL DRAWINGS DRG; 4

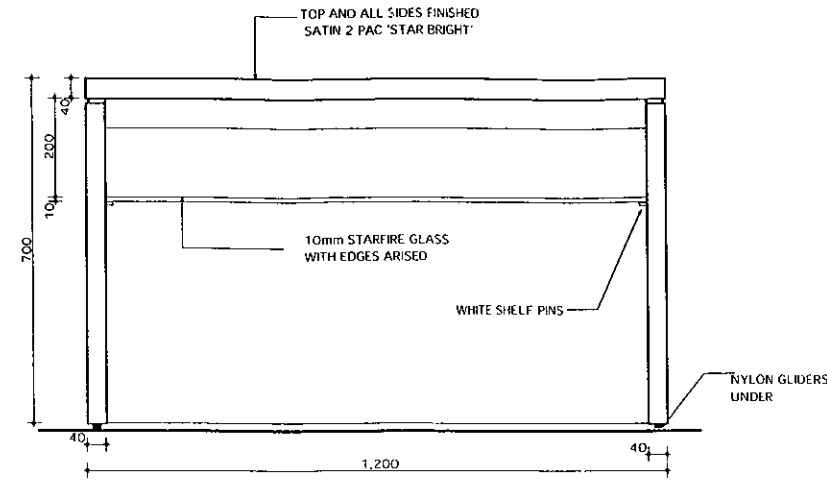
100 X 10mm S./STEEL SKIRTING



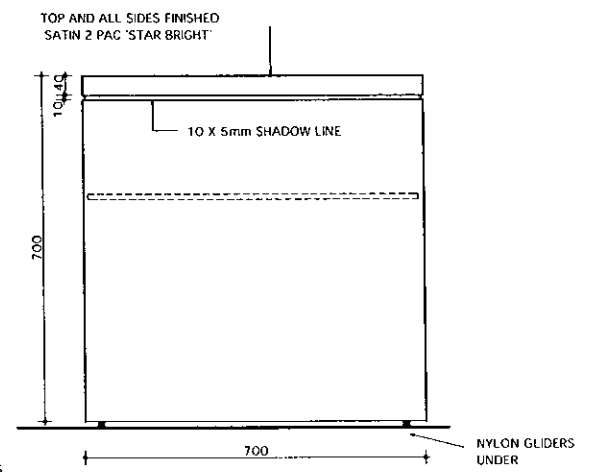
ELEVATION DETAIL DETAIL (2) NOTE: SEE MORE DETAIL OF SHELIVING ON DRG; 10

DAVIS LANGDON AUSTRALIA  
This Drawing/Specification/Detail/  
Attachment/Conditions forms part of  
Complying Development  
Certificate No: ..... 250152 .....

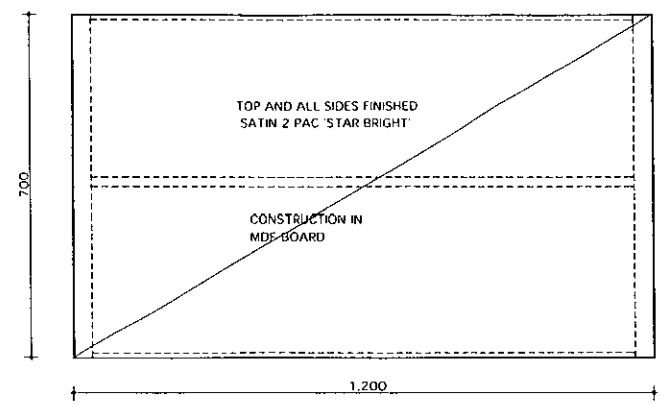




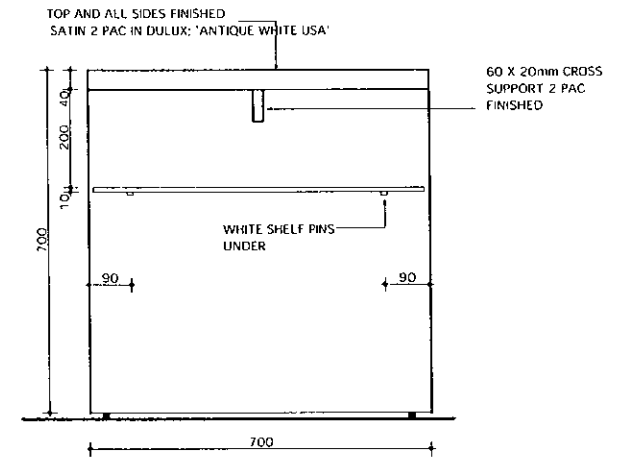
FRONT ELEVATION



SIDE ELEVATION

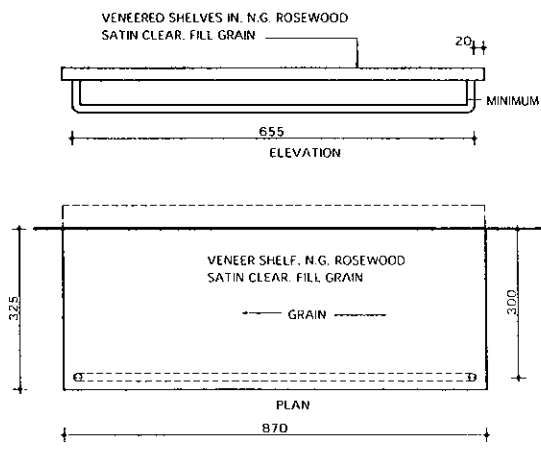


PLAN

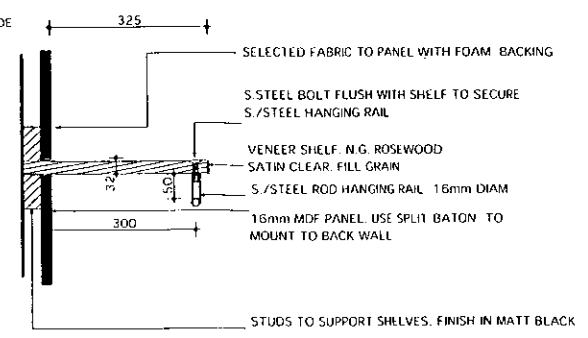


SIDE SECTION

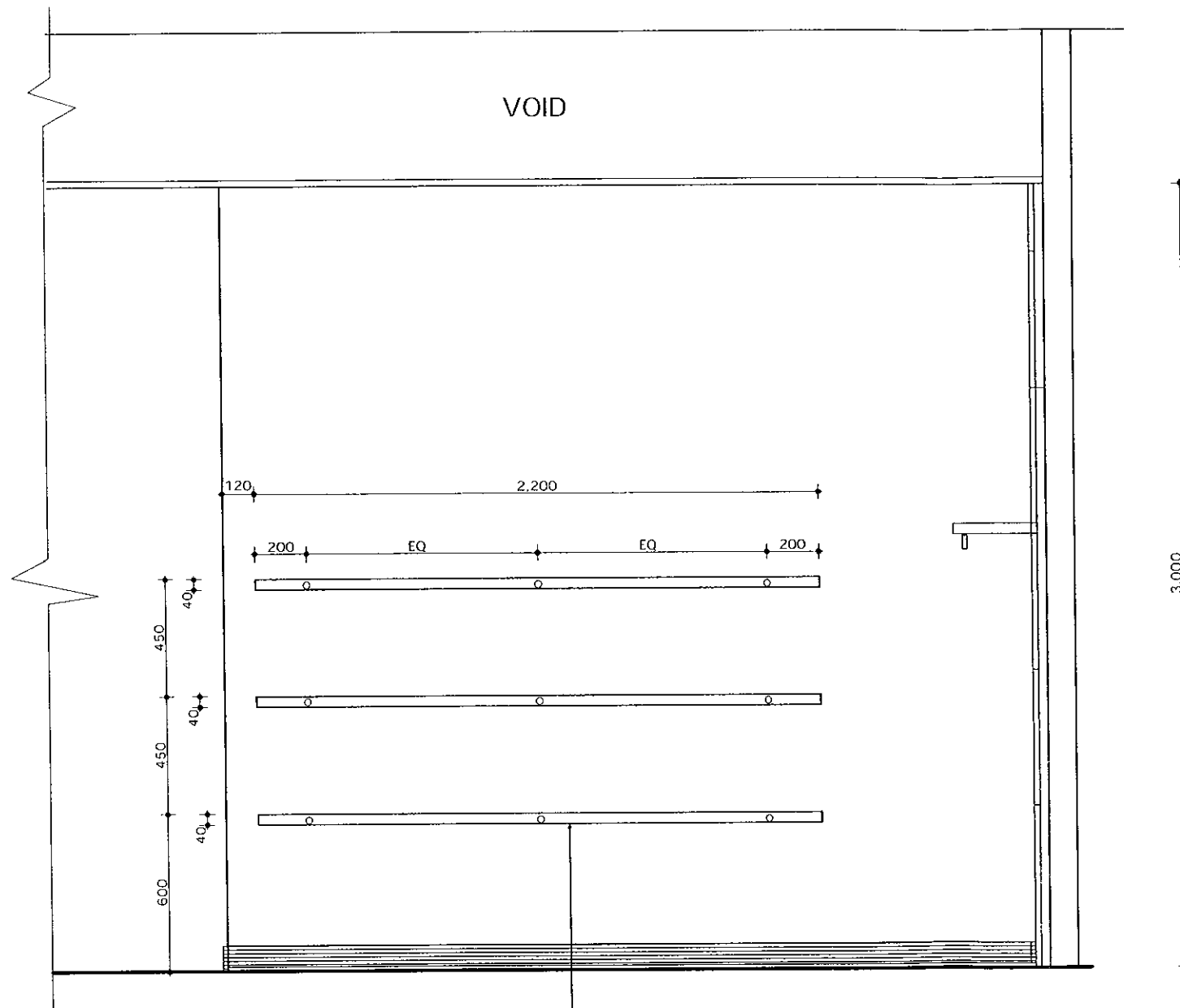
KNITWEAR TABLE DETAIL ⑤



WALL SHELF DETAIL

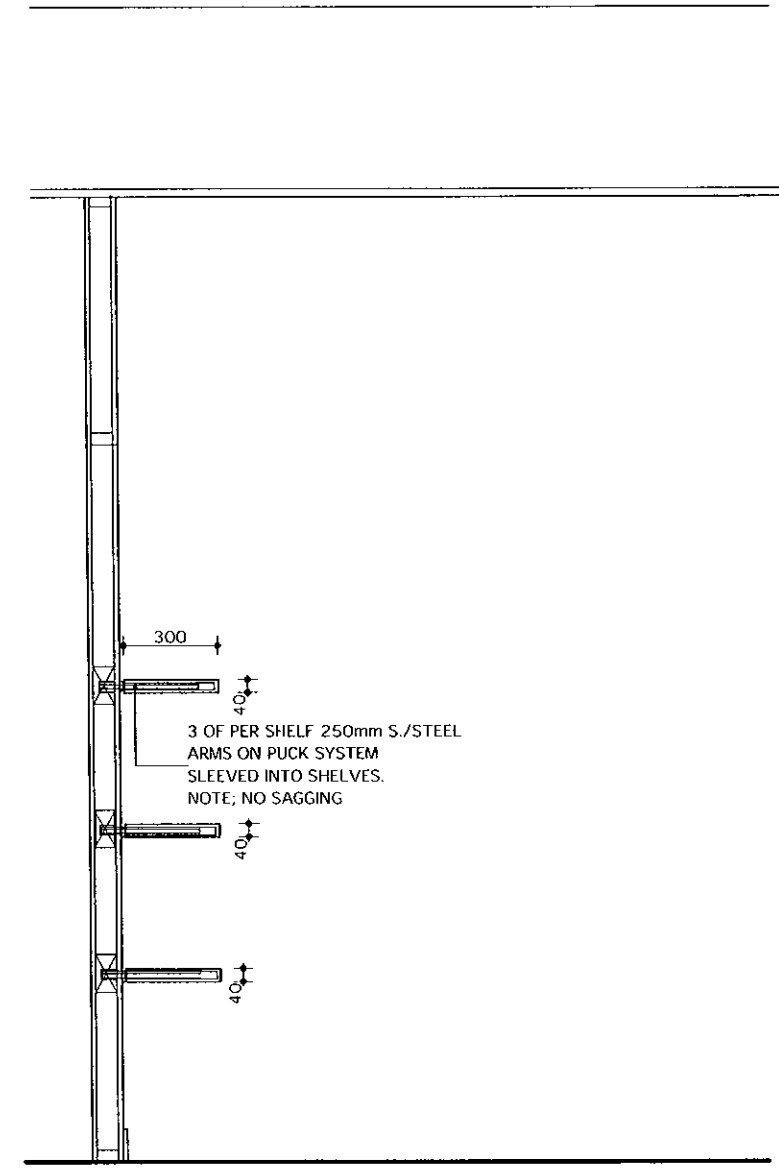


DAVIS LANGDON AUSTRALIA  
 This Drawing/Specification/Detail/  
 Attachment/Conditions forms part of  
 Complying Development  
 Certificate No: .....250157.....



ELEVATION DETAIL ③

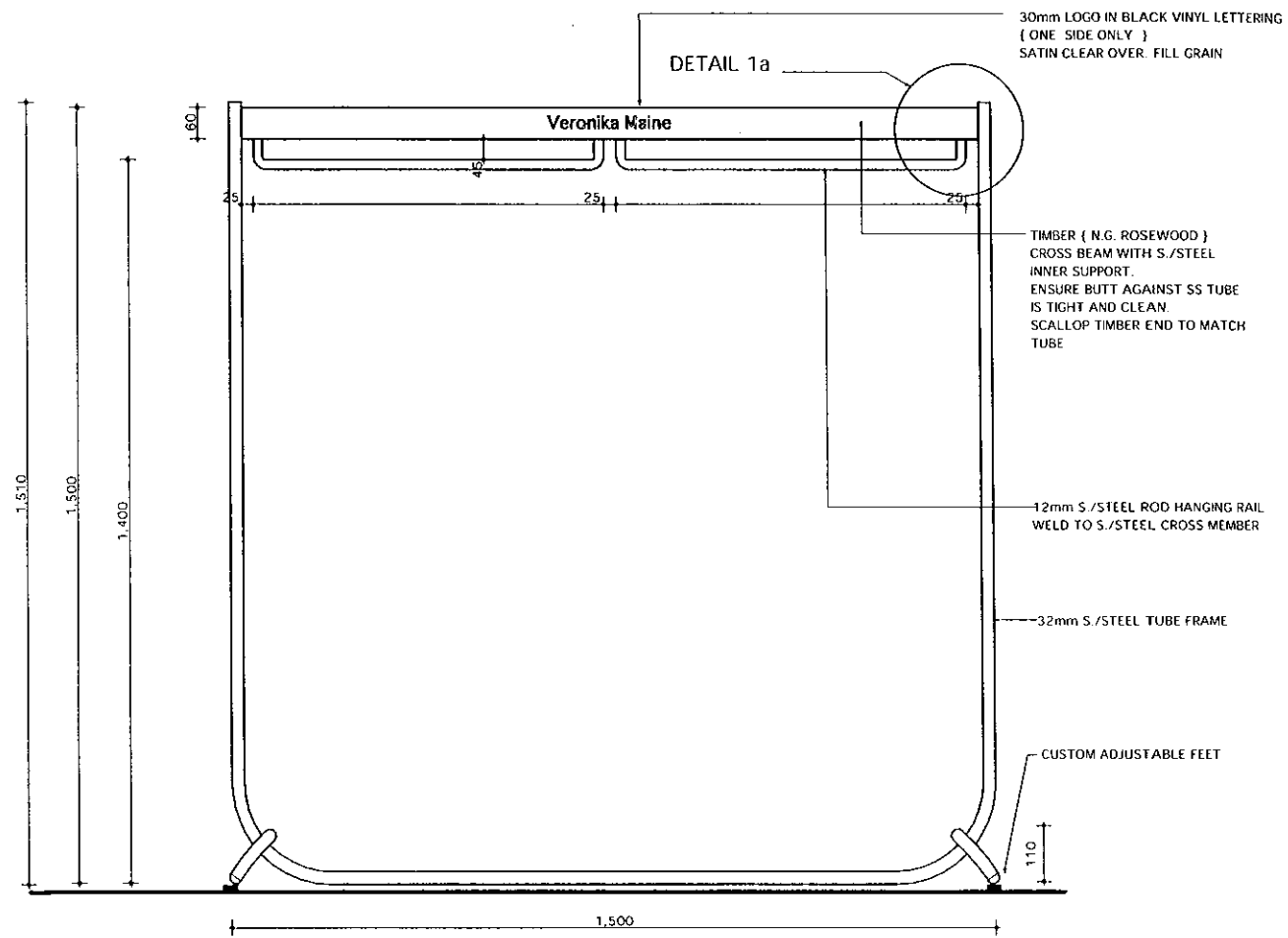
2200 X 300 X 40mm  
 2 PAC FINISHED SHELVING IN DULUX; 'LINCEED'  
 FIXED TO WALL WITH PUCK SYSTEM  
 WITH 250mm ARMS



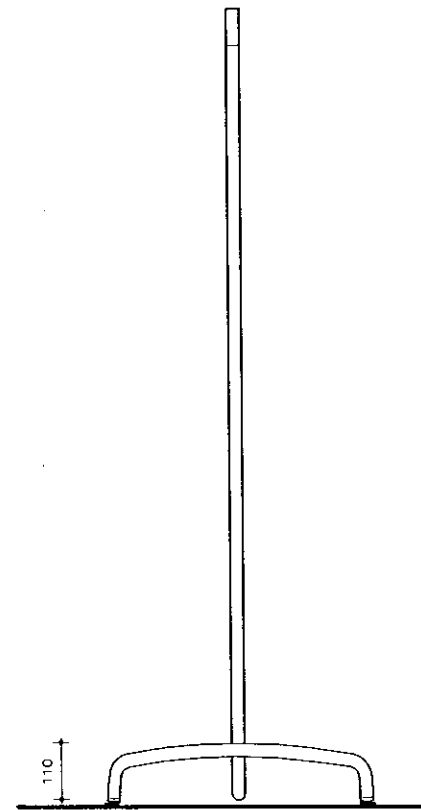
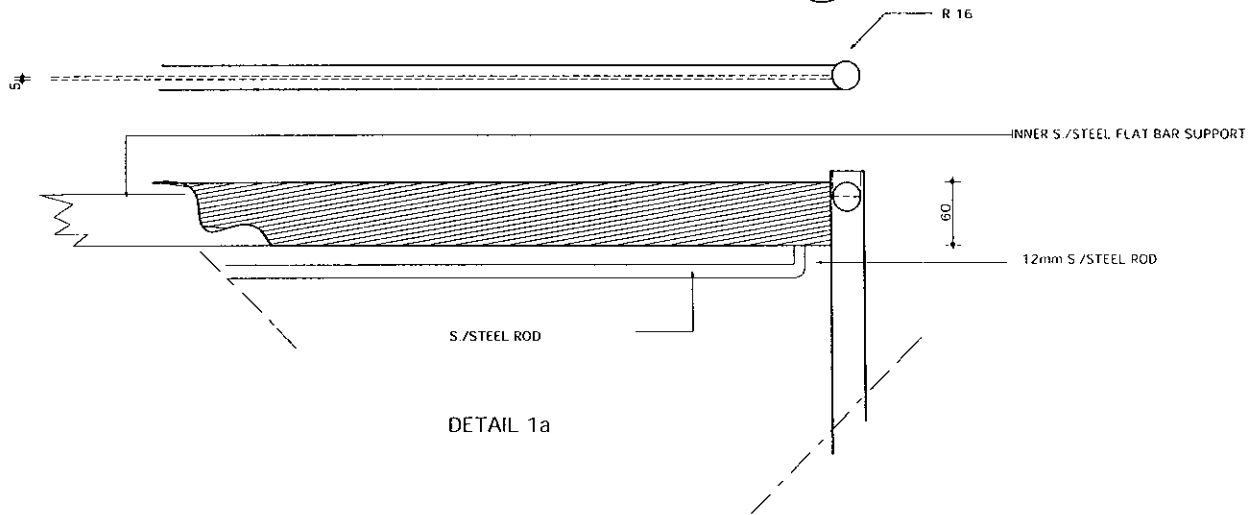
SECTION DETAIL ③

61 AVENUE RD MOSMAN 2088 TEL; 02 99698187 / FAX; 02 99698115	<b>HANS BRUST DESIGN</b>
PROPOSED VERONIKA MAINE AT TENANCY; 001 STOCKLAND, BALGOWLAH AREA 100m2 SCALE; 1:20 DATE; 19. 12. 08 DRG; 11 OF 15	

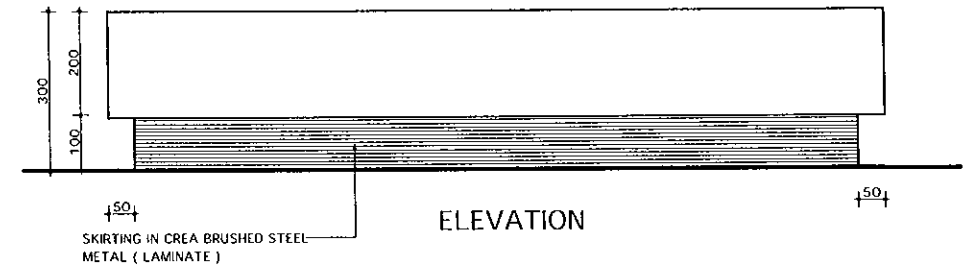
DAVIS LANGDON AUSTRALIA  
 This Drawing/Specification/Detail/  
 Attachment/Conditions forms part of  
 Complying Development  
 Certificate No: .....250152.....



ELEVATION RACK DETAIL 1

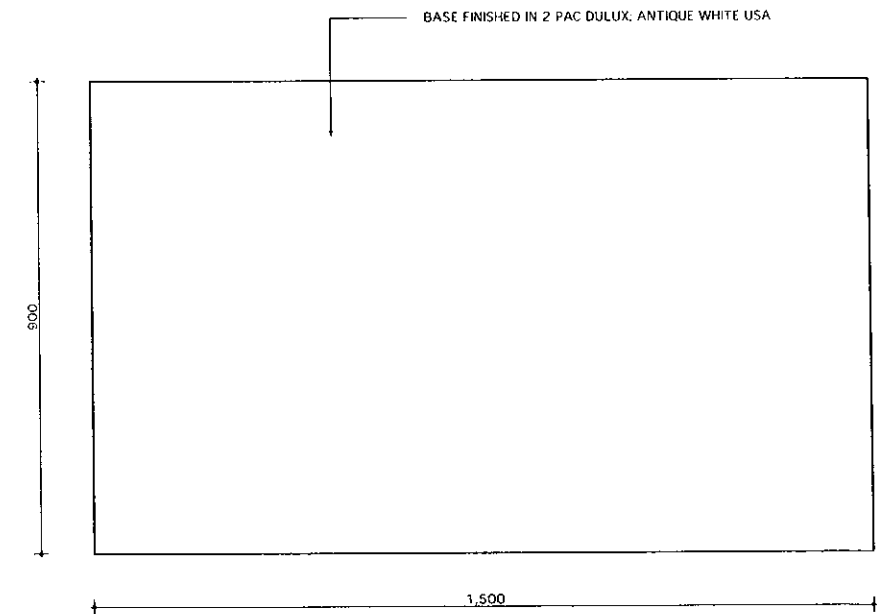


SIDE ELEVATION



ELEVATION

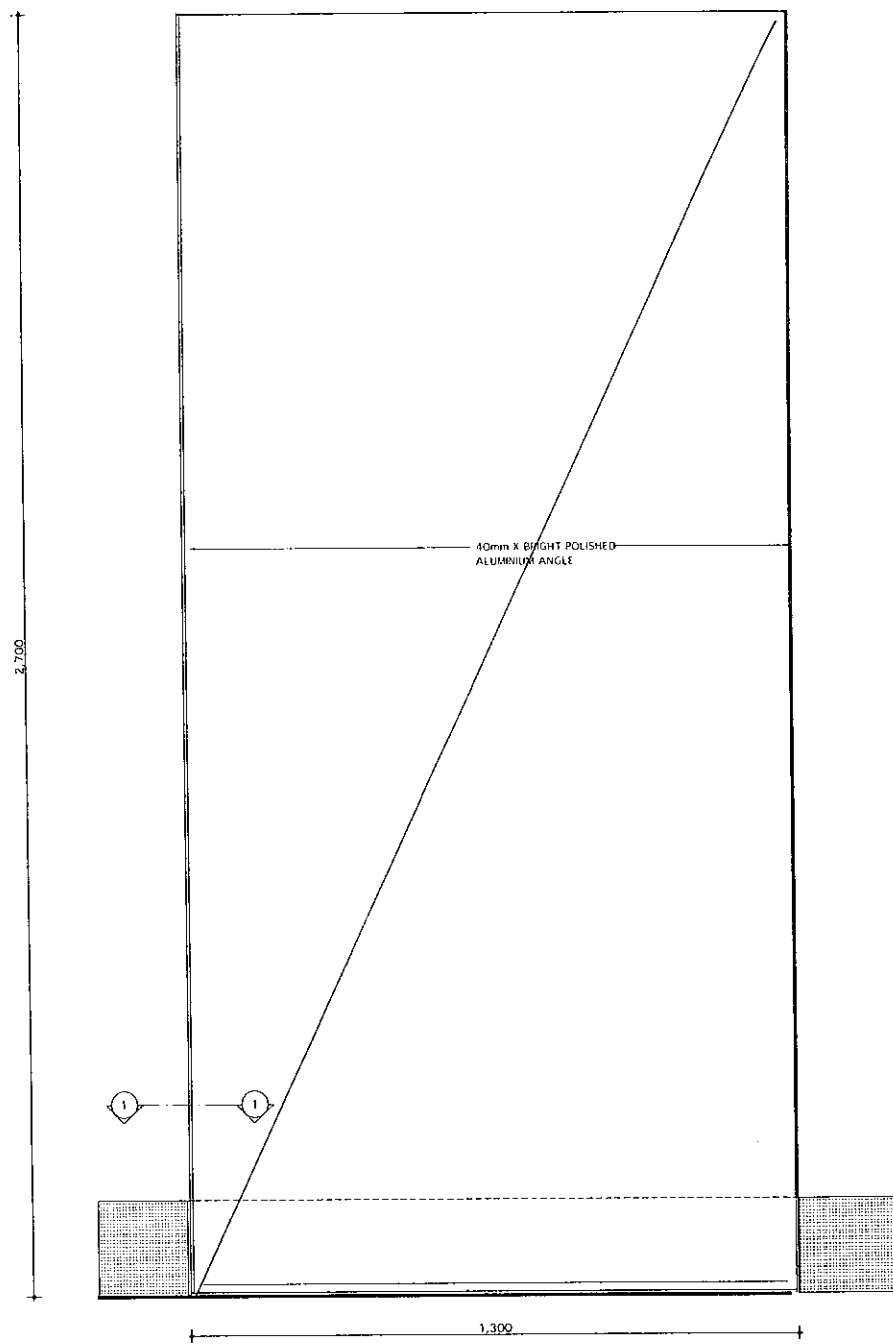
WINDOW BASE



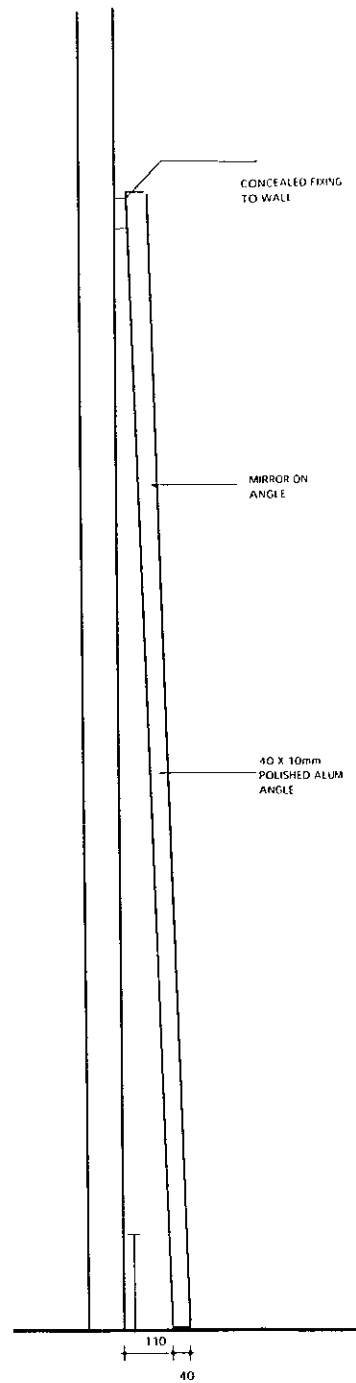
PLAN DETAIL WINDOW BASE 7

61 AVENUE RD MOSMAN 2088 TEL: 99698187 / FAX: 02 99698115  
PROPOSED VERONIKA MAINE AT TENANCY, 001 STOCKLANDS, BALGOWLAH, SCALE: 1:10 DATE: 19.12.08 DRG. 12 OF 14

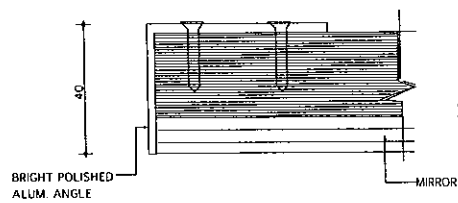
DAVIS LANGDON AUSTRALIA  
This Drawing/Specification/Detail/  
Attachment/Conditions forms part of  
Complying Development  
Certificate No: ..... 25.0152 .....



ELEVATION / 1 OF  
FREESTANDING MIRRORS



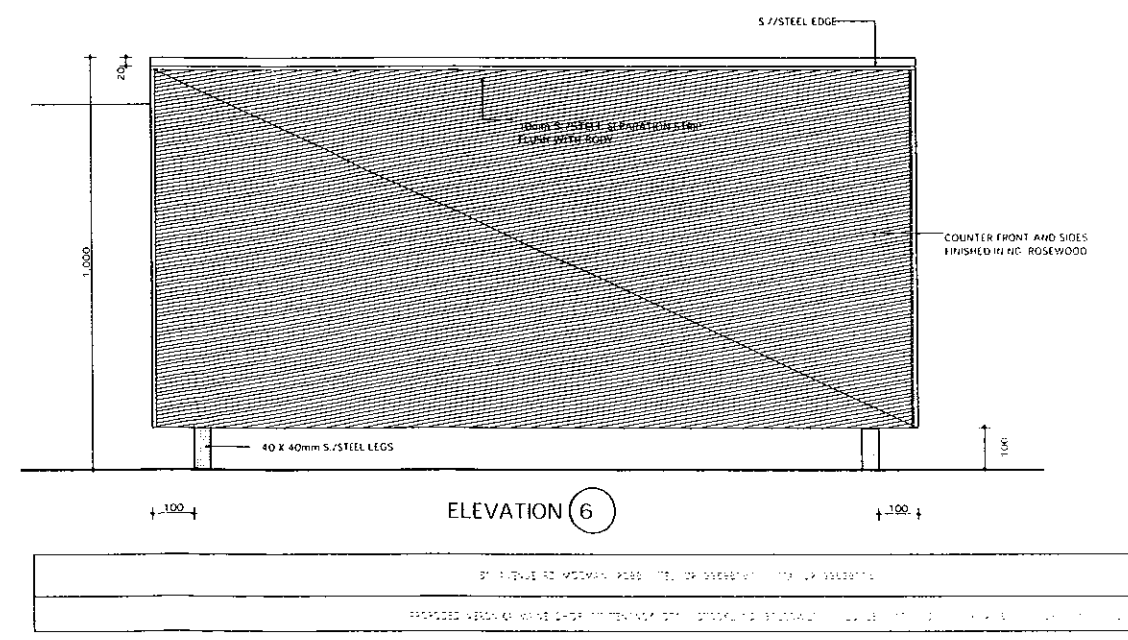
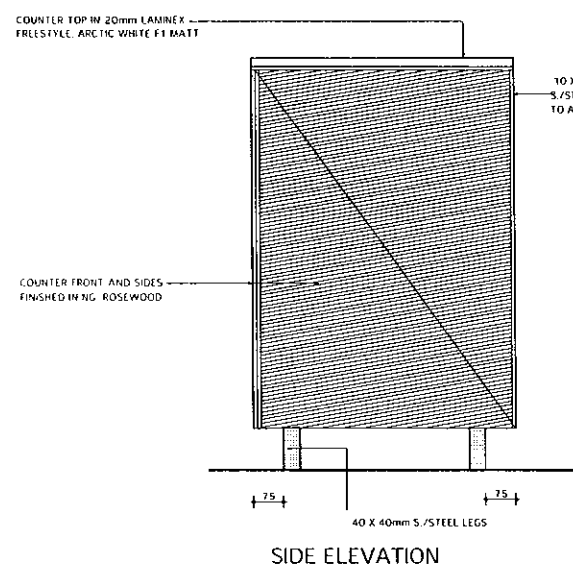
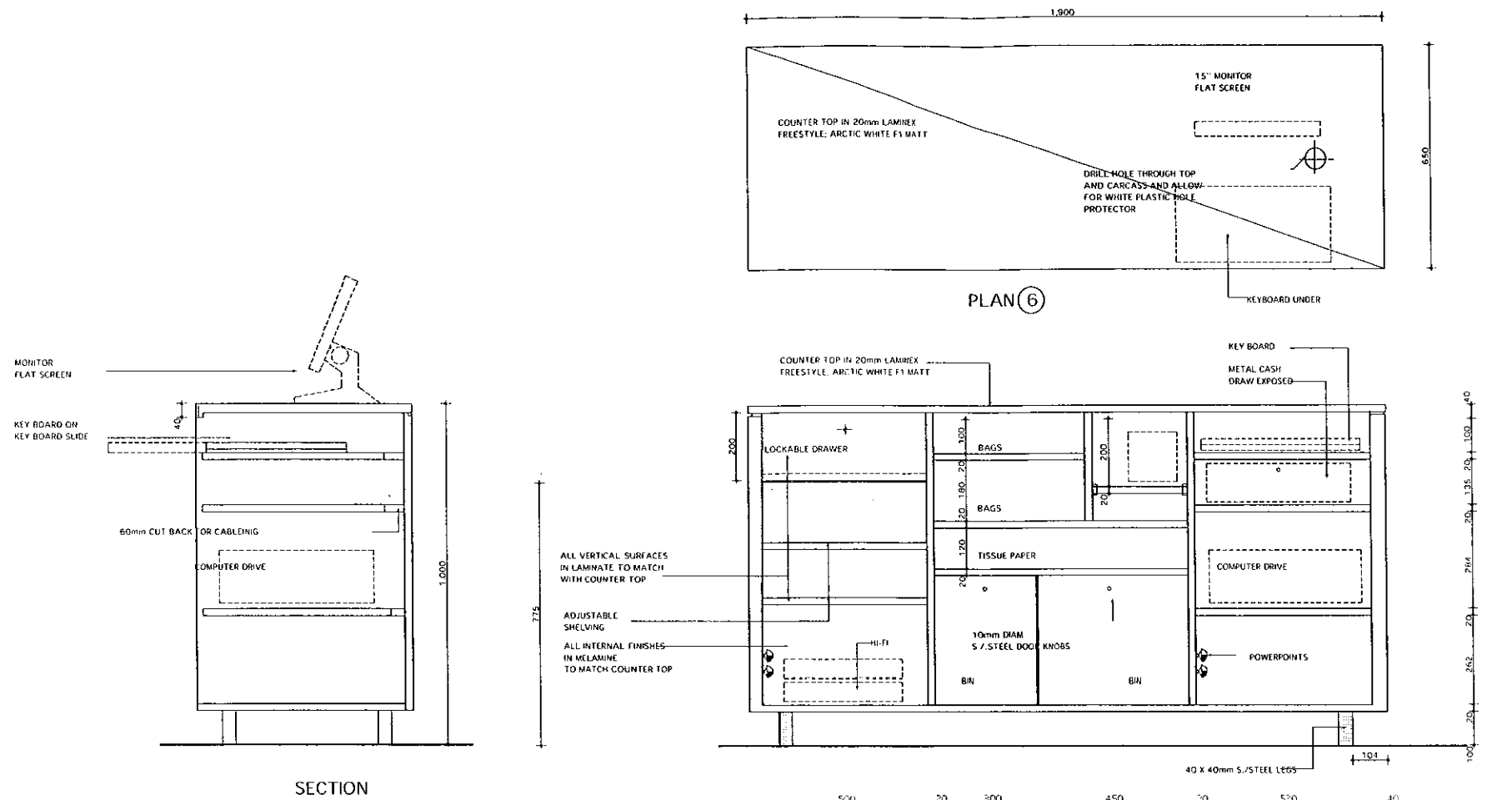
SIDE ELEVATION



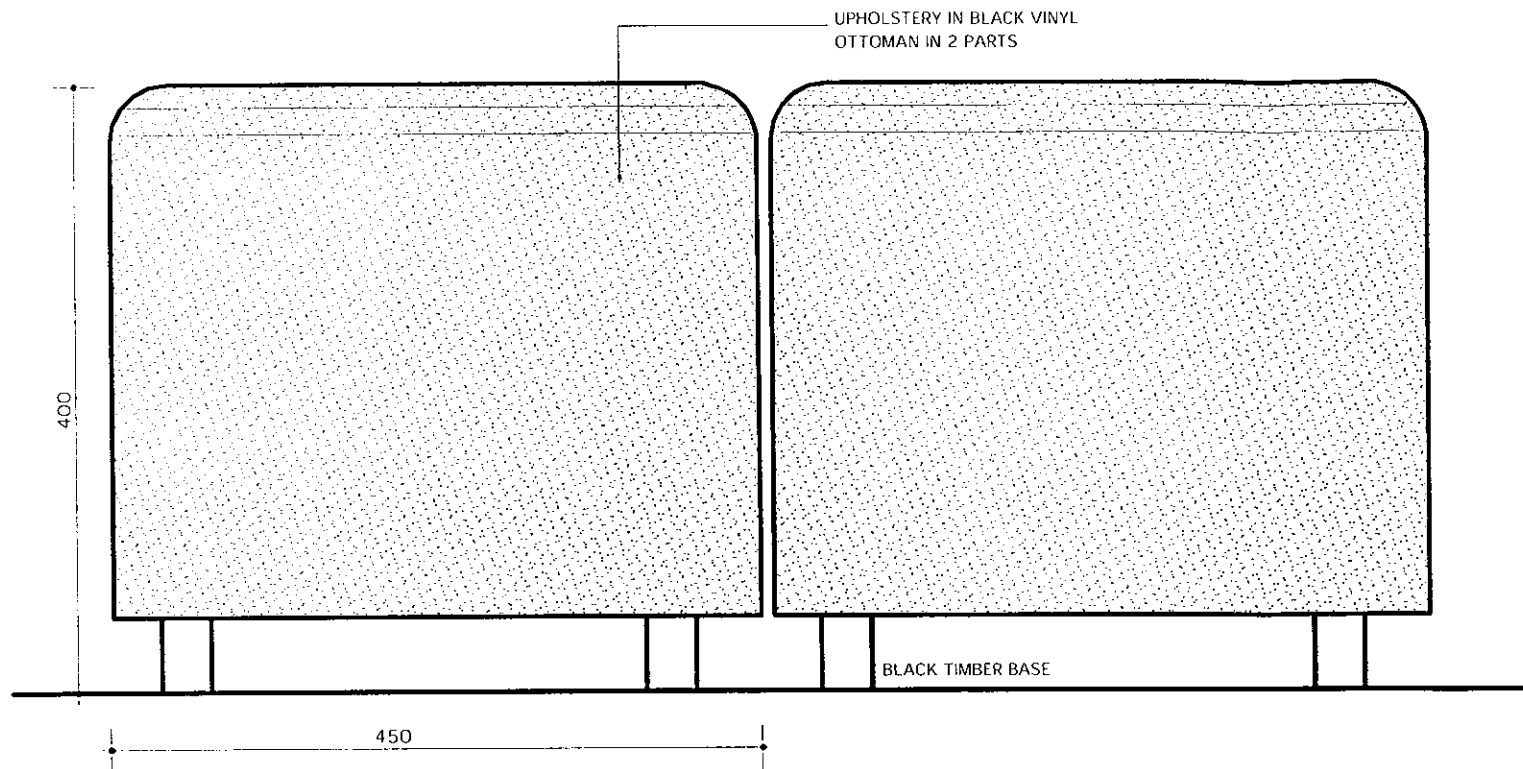
SECTION 1.1

61 AVENUE RD MOSMAN 2088 . TEL: 02 99698187. FAX: 99698115	<b>HANS BRUST DESIGN</b>
PROPOSED VERONIKA MAINE AT TENANCY, 001 STOCKLANDS, BALGOWLAH SCALE: 1:10 . DATE: 19.12.08 DRG: 13 OF 15	

DAVIS LANGDON AUSTRALIA  
 This Drawing/Specification/Detail/  
 Attachment/Conditions forms part of  
 Complying Development  
 Certificate No: ..... 250152 .....

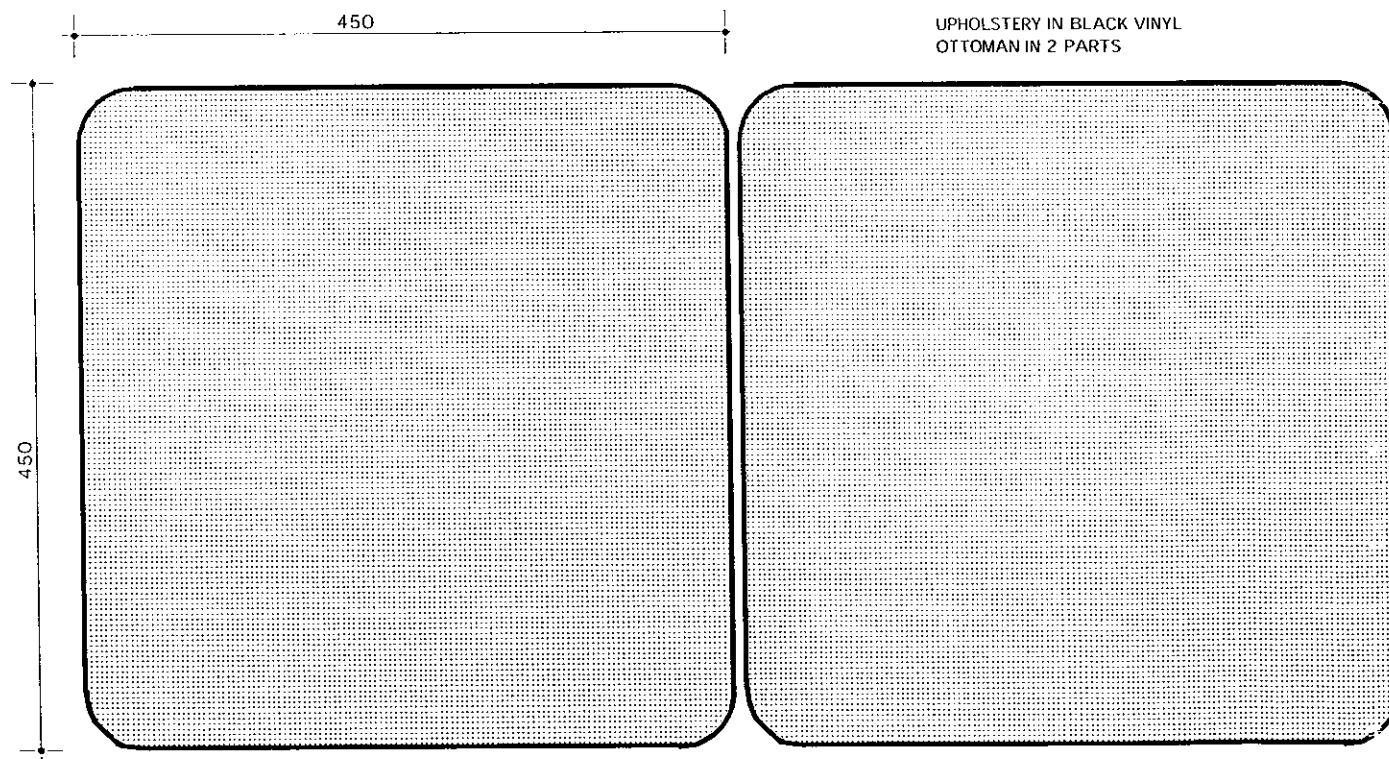


DAVIS LANGDON AUSTRALIA  
 This Drawing/Specification/Detail/  
 Attachment/Conditions forms part of  
 Complying Development  
 Certificate No: ..... 250152 .....

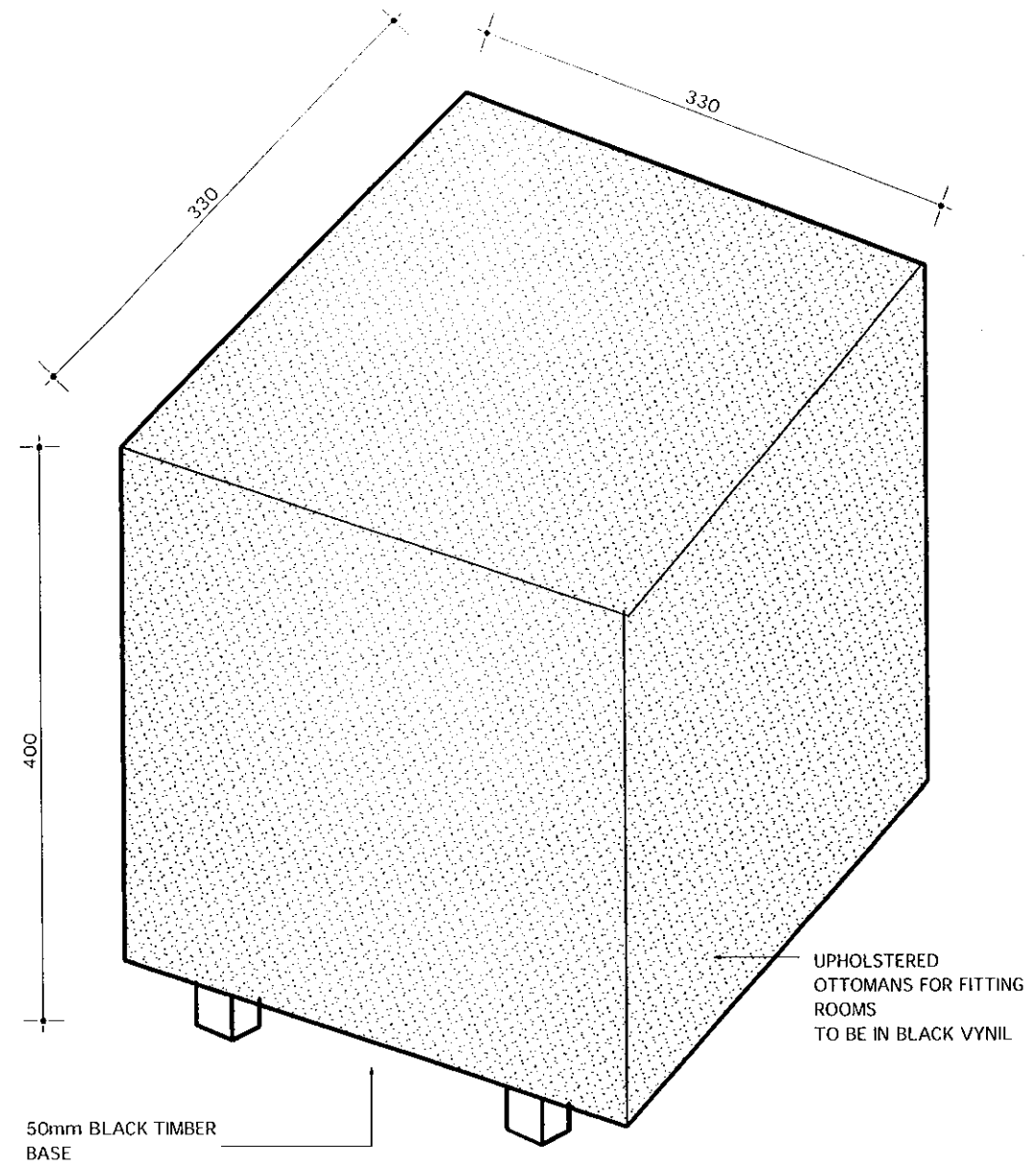


LARGE OTTOMAN / ELEVATION DETAIL 10

NOTE: ALL OTTOMANS SUPPLIED BY CUE



PLAN



FITTINGROOM OTTOMANS  
1 PER FITTING ROOM

ALL OTTOMANS SUPPLY BY CUE

DAVIS LANGDON AUSTRALIA  
This Drawing/Specification/Detail/  
Attachment/Conditions forms part of  
Complying Development  
Certificate No: .....250152.....