

**LOWER GROUND FLOOR - COURTYARD 1**  
THIS SHEET CORRELATES WITH SHEET DA-1830-02



**KEY PLAN**



**LEGEND**

- Site boundary
- Basement line
- Existing Tree TPZ
- Existing trees to be retained. Tree numbers correlate with Arborists report
- Existing trees to be removed. Tree numbers correlate with Arborist's report
- Proposed trees. Refer to planting schedule

**NOTES**

- ① Proposed paving banding providing visual interest
- ② Proposed seating providing rest amenity
- ③ Proposed planter pots with feature planting
- ④ Proposed tree planting providing screening and shade amenity to courtyard

**NOTE:**  
All plant species & locations generally in accordance with the Development Application prepared by Sturt Noble Associates dated 15.11.2019 Rev F

**Sturt Noble Associates**  
Suite 307, 166 Glebe Point Road  
Glebe NSW 2007  
T. 02 9211 3744  
W. www.sturtnoble.com.au  
landscape architecture  
environmental & urban design

**PROJECT**  
**REGIS CARE, BELROSE**  
181 FOREST WAY, BELROSE NSW 2085  
**CLIENT**  
**REGIS**

**DRAWING**  
**LOWER GROUND FLOOR COURTYARD 1**  
**LANDSCAPE PLAN for section 4.55**  
DRAWING No. ISSUE DRAWN DATE  
**DA-2319-01 A ml 22.12.2023**



ACN: 164 245 514 ABN: 99 164 245 514  
THIS DRAWING SHOULD BE READ IN CONJUNCTION WITH ALL RELEVANT CONTRACTS, SPECIFICATIONS, REPORTS AND DRAWINGS. COPYRIGHT OF THIS DRAWING IS VESTED IN STURT NOBLE ASSOCIATES PTY LTD.

# LOWER GROUND FLOOR - COURTYARD 2 & 3

THIS SHEET CORRELATES WITH SHEET DA-1830-02



## KEY PLAN



## LEGEND

- Site boundary
- Line of awning above
- Proposed trees. Refer to planting schedule

## NOTES

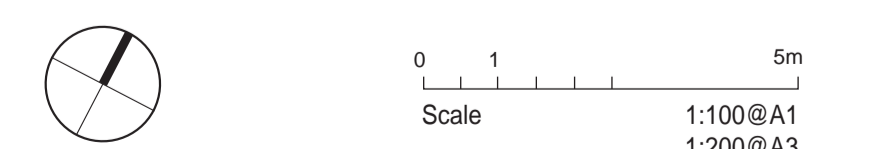
- ① Proposed paving banding providing visual interest
- ② Proposed raised planter with seating walls and feature planting
- ③ Proposed planter pots providing additional planting opportunities
- ④ Proposed sandstone boulders providing additional visual interest
- ⑤ Proposed feature trees providing visual amenity
- ⑥ Proposed gravel path for maintenance access

NOTE:  
All plant species & locations generally in accordance with the Development Application prepared by Sturt Noble Associates dated 15.11.2019 Rev F

**Sturt Noble Associates**  
 Suite 307, 166 Glebe Point Road  
 Glebe NSW 2007  
 T. 02 9211 3744  
 W. www.sturtnoble.com.au  
 landscape architecture  
 environmental & urban design

PROJECT  
**REGIS CARE, BELROSE**  
 181 FOREST WAY, BELROSE NSW 2085  
 CLIENT  
**REGIS**

DRAWING  
**LOWER GROUND FLOOR COURTYARDS 2 & 3 LANDSCAPE PLAN for section 4.55**  
 DRAWING No. ISSUE DRAWN DATE  
**DA-2319-02 A ml 22.12.2023**



ACN: 164 245 514 ABN: 99 164 245 514  
 THIS DRAWING SHOULD BE READ IN CONJUNCTION WITH ALL RELEVANT CONTRACTS, SPECIFICATIONS, REPORTS AND DRAWINGS. COPYRIGHT OF THIS DRAWING IS VESTED IN STURT NOBLE ASSOCIATES PTY LTD.

**GROUND FLOOR - COURTYARD 1 & 2**  
THIS SHEET CORRELATES WITH SHEET DA-1830-03



**KEY PLAN**



**LEGEND**

- Site boundary
- Line of awning above
- Proposed trees. Refer to planting schedule

**NOTES**

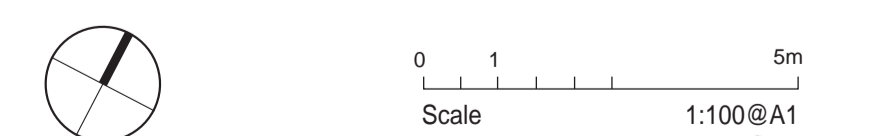
- ① Proposed paving banding providing visual interest
- ② Proposed raised gardens with seating edge
- ③ Proposed seating providing gathering opportunities
- ④ Proposed planter pots with additional feature planting
- ⑤ Proposed raised planter will mixed planting
- ⑥ Proposed sandstone boulders providing additional visual interest to garden beds
- ⑦ Proposed gravel to avoid "wet walls" and provide maintenance to facade
- ⑧ Proposed mixed planting providing privacy buffer for residents
- ⑨ 1.8m palisade fence
- ⑩ Water feature
- ⑪ Designated bench for portable BBQ

**NOTE:**  
All plant species & locations generally in accordance with the Development Application prepared by Sturt Noble Associates dated 15.11.2019 Rev F

**Sturt Noble Associates**  
Suite 307, 166 Glebe Point Road  
Glebe NSW 2007  
T. 02 9211 3744  
W. www.sturnoble.com.au  
landscape architecture  
environmental & urban design

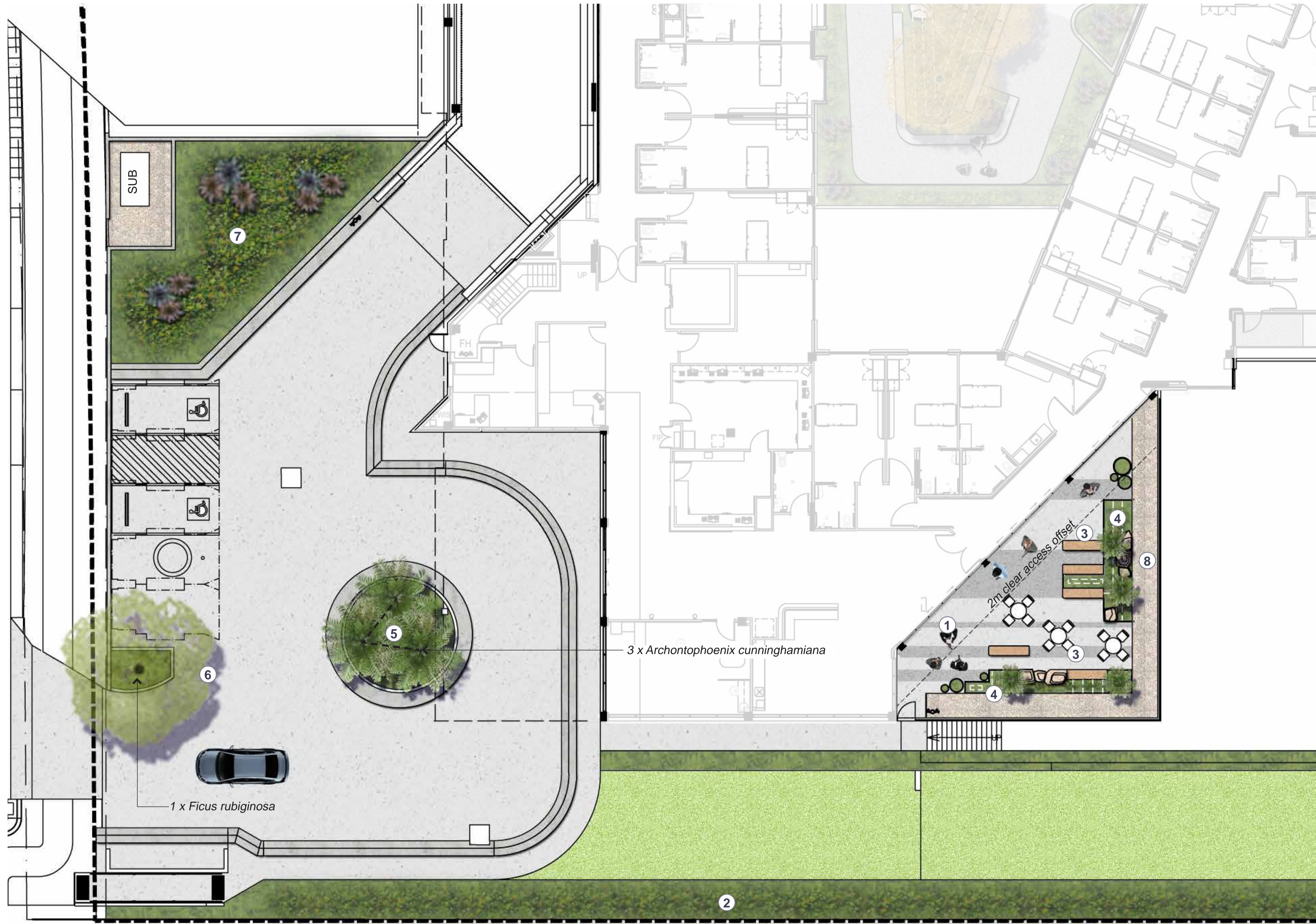
**PROJECT**  
REGIS CARE, BELROSE  
181 FOREST WAY, BELROSE NSW 2085  
**CLIENT**  
REGIS

**DRAWING**  
GROUND FLOOR COURTYARDS 1 & 2  
LANDSCAPE PLAN for section 4.55  
DRAWING No. ISSUE DRAWN DATE  
DA-2319-03 A MI 22.12.2023



# GROUND FLOOR - ENTRY & COURTYARD 3

THIS SHEET CORRELATES WITH SHEET DA-1830-03



## KEY PLAN



## LEGEND

- Site boundary
- Line of awning above
- Proposed trees. Refer to planting schedule

## NOTES

- ① Proposed paving banding providing visual interest
- ② Proposed screening and buffer planting to boundary *Syzygium cascade*
- ③ Proposed seating providing gathering amenity
- ④ Proposed raised garden with mixed planting providing green backdrop to seating spaces
- ⑤ Proposed feature palm planting in round-a-bout formalising entry
- ⑥ Proposed signature tree accentuating entry to site
- ⑦ Proposed mixed planting providing planting amenity
- ⑧ Proposed gravel providing maintenance access

NOTE:  
All plant species & locations generally in accordance with the Development Application prepared by Sturt Noble Associates dated 15.11.2019 Rev F


 Suite 307, 166 Glebe Point Road  
 Glebe NSW 2007  
 T. 02 9211 3744  
 W. www.sturtnoble.com.au  
 landscape architecture  
 environmental & urban design

PROJECT  
**REGIS CARE, BELROSE**  
 181 FOREST WAY, BELROSE NSW 2085  
 CLIENT  
**REGIS**

DRAWING  
**GROUND FLOOR ENTRY AND COURTYARD 3 LANDSCAPE PLAN for section 4.55**

DRAWING No.	ISSUE	DRAWN	DATE
DA-2319-04	A	ml	22.12.2023


 0 1 5m  
 Scale 1:100@A1  
 1:200@A3

ACN: 164 245 514 ABN: 99 164 245 514  
 THIS DRAWING SHOULD BE READ IN CONJUNCTION WITH ALL RELEVANT CONTRACTS, SPECIFICATIONS, REPORTS AND DRAWINGS. COPYRIGHT OF THIS DRAWINGS IS VESTED IN STURT NOBLE ASSOCIATES PTY LTD.

# FIRST FLOOR - COURTYARD 1

THIS SHEET CORRELATES WITH SHEET DA-1830-04



## KEY PLAN



## LEGEND

- Site boundary
- Line of awning above
- Proposed trees. Refer to planting schedule

## NOTES

- |  |  |  |
|--|--|--|
| <ul style="list-style-type: none"> <li>① Proposed paving banding providing visual interest</li> <li>② Proposed open turf for gathering and recreation</li> <li>③ Proposed seating with pergolas providing shaded gathering opportunities</li> <li>④ Proposed raised planter with seating wall</li> <li>⑤ Proposed clothesline</li> <li>⑥ Proposed tree planting providing additional shade amenity and colour variety to open space</li> </ul> | <ul style="list-style-type: none"> <li>⑦ Proposed stepping stones in groundcovers providing access to egress path</li> <li>⑧ Proposed gravel providing maintenance access to facade</li> <li>⑨ Raised garden bed for communal gardening</li> <li>⑩ BBQ</li> <li>⑪ Fire egress path</li> <li>⑫ Planting around building to soften facade and to like the development with existing landscape</li> </ul> | <ul style="list-style-type: none"> <li>⑬ Water tank</li> <li>⑭ Storage shed for communal garden</li> <li>⑮ Climbing plants to arbour above</li> <li>⑯ Water feature</li> <li>⑰ Seating wall</li> </ul> |
|--|--|--|

**NOTE:**  
All plant species & locations generally in accordance with the Development Application prepared by Sturt Noble Associates dated 15.11.2019 Rev F

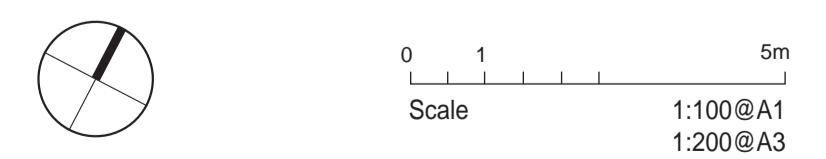
**Sturt Noble Associates**  
Suite 307, 166 Glebe Point Road  
Glebe NSW 2007  
T. 02 9211 3744  
W. www.sturtnoble.com.au  
landscape architecture  
environmental & urban design

**PROJECT**  
REGIS CARE, BELROSE  
181 FOREST WAY, BELROSE NSW 2085

**CLIENT**  
REGIS

**DRAWING**  
FIRST FLOOR COURTYARD 1  
LANDSCAPE PLAN for section 4.55

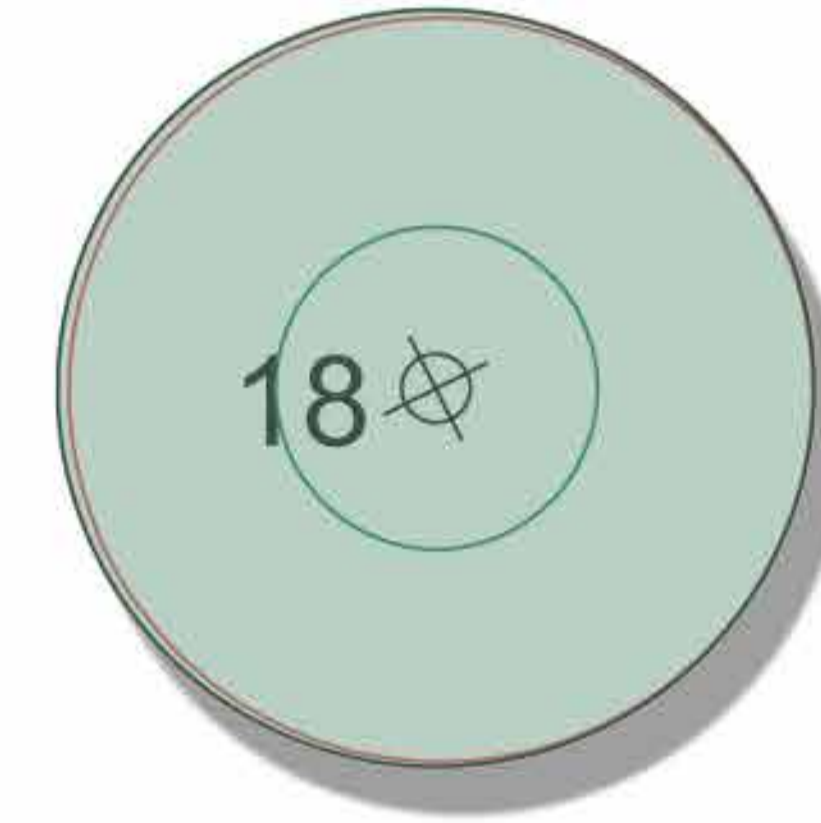
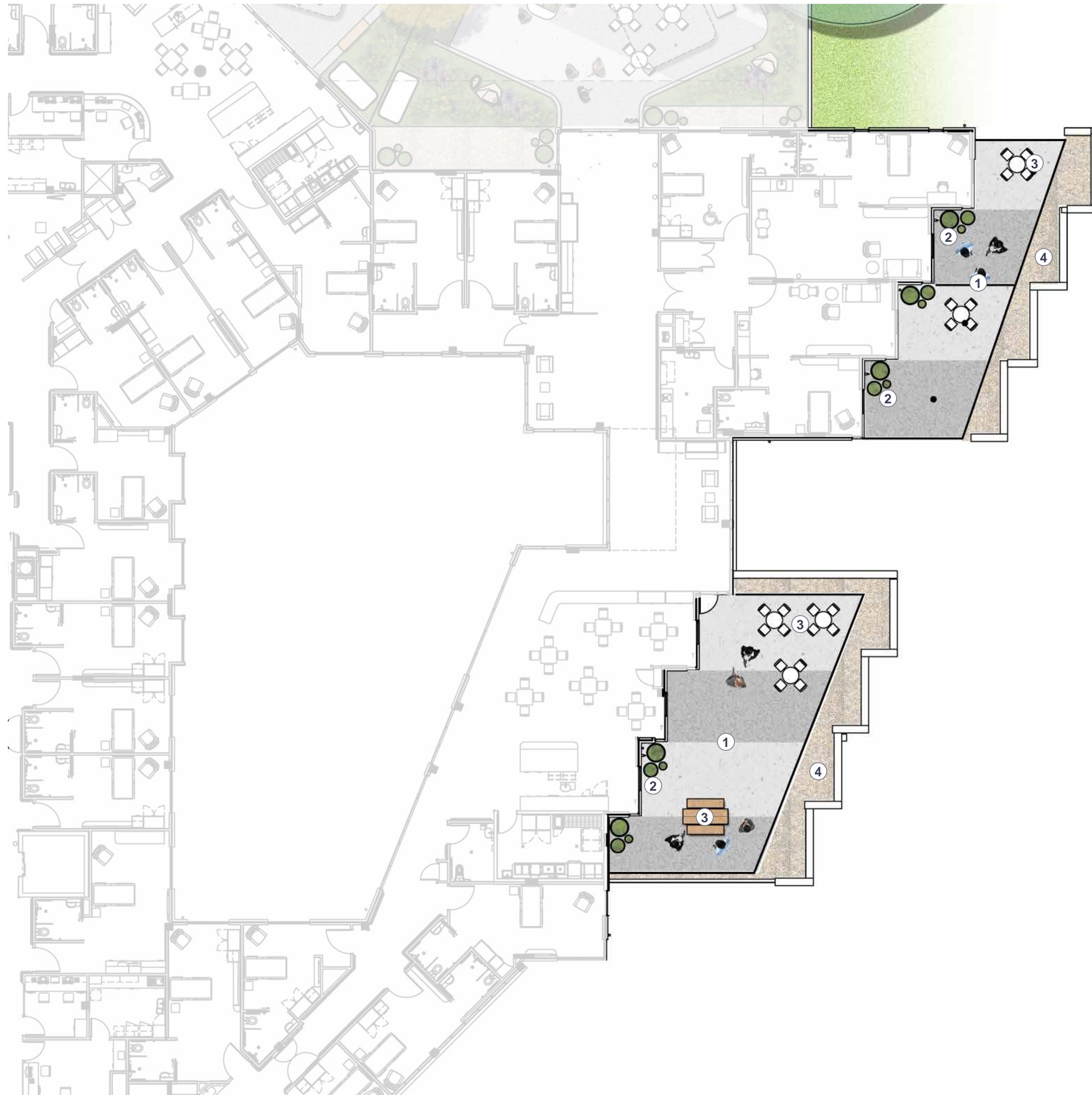
DRAWING No.	ISSUE	DRAWN	DATE
DA-2319-05	A	ml	22.12.2023



ACN: 164 245 514 ABN: 99 164 245 514  
THIS DRAWING SHOULD BE READ IN CONJUNCTION WITH ALL RELEVANT CONTRACTS, SPECIFICATIONS, REPORTS AND DRAWINGS. COPYRIGHT OF THIS DRAWINGS IS VESTED IN STURT NOBLE ASSOCIATES PTY LTD.

# FIRST FLOOR - TERRACES

THIS SHEET CORRELATES WITH SHEET DA-1830-04



## KEY PLAN



## LEGEND

- Site boundary
- Line of awning above
- Existing trees to be retained. Tree numbers correlate with Arborists report
- ⊕ Existing trees to be removed. Tree numbers correlate with Arborist's report
- Proposed trees. Refer to planting schedule

## NOTES

- ① Proposed paving banding providing visual interest
- ② Proposed planter pots providing additional planting opportunities
- ③ Proposed seating providing gathering opportunities
- ④ Proposed gravel edge for maintenance access

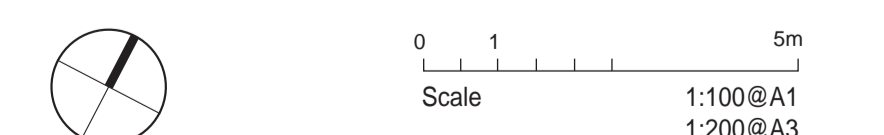
NOTE:  
All plant species & locations generally in accordance with the Development Application prepared by Sturt Noble Associates dated 15.11.2019 Rev F

**Sturt Noble Associates**  
Suite 307, 166 Glebe Point Road  
Glebe NSW 2007  
T. 02 9211 3744  
W. www.sturtnoble.com.au  
landscape architecture  
environmental & urban design

PROJECT  
**REGIS CARE, BELROSE**  
181 FOREST WAY, BELROSE NSW 2085  
CLIENT  
**REGIS**

DRAWING  
**FIRST FLOOR TERRACES**  
**LANDSCAPE PLAN for section 4.55**

DRAWING No.	ISSUE	DRAWN	DATE
DA-2319-06	A	ml	22.12.2023



ACN: 164 245 514 ABN: 99 164 245 514  
THIS DRAWING SHOULD BE READ IN CONJUNCTION WITH ALL RELEVANT CONTRACTS, SPECIFICATIONS, REPORTS AND DRAWINGS. COPYRIGHT OF THIS DRAWINGS IS VESTED IN STURT NOBLE ASSOCIATES PTY LTD.

# FIRST FLOOR - FRONT BOUNDARY PLANTING

THIS SHEET CORRELATES WITH SHEET DA-1830-04



## KEY PLAN



## LEGEND

- Site boundary
- Line of awning above
- Existing Tree TPZ
- Existing trees to be retained. Tree numbers correlate with Arborists report
- Existing trees to be removed. Tree numbers correlate with Arborist's report
- Proposed trees. Refer to planting schedule

## NOTES

- ① Proposed entry/egress path
- ② Proposed open turf
- ③ Proposed screen planting on front boundary providing privacy and greening amenity
- ④ Proposed feature planting accentuating entry
- ⑤ Access gate to first floor courtyard

NOTE:  
All plant species & locations generally in accordance with the Development Application prepared by Sturt Noble Associates dated 15.11.2019 Rev F

**Sturt Noble Associates**  
Suite 307, 166 Glebe Point Road  
Glebe NSW 2007  
T. 02 9211 3744  
W. www.sturtnoble.com.au  
landscape architecture  
environmental & urban design

PROJECT  
**REGIS CARE, BELROSE**  
181 FOREST WAY, BELROSE NSW 2085  
CLIENT  
**REGIS**

DRAWING  
**GROUND FLOOR FRONT BOUNDARY LANDSCAPE PLAN for section 4.55**  
DRAWING No. ISSUE DRAWN DATE  
**DA-2319-07 A ml 22.12.2023**



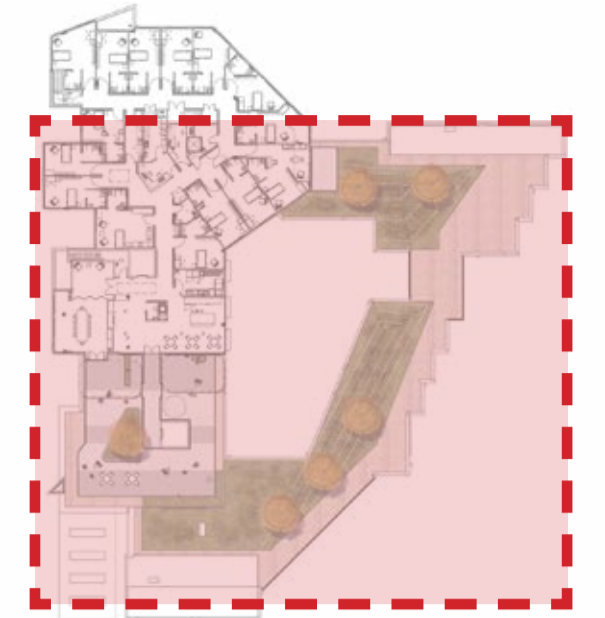
ACN: 164 245 514 ABN: 99 164 245 514  
THIS DRAWING SHOULD BE READ IN CONJUNCTION WITH ALL RELEVANT CONTRACTS, SPECIFICATIONS, REPORTS AND DRAWINGS. COPYRIGHT OF THIS DRAWING IS VESTED IN STURT NOBLE ASSOCIATES PTY LTD.

# SECOND FLOOR - ROOFTOP

THIS SHEET CORRELATES WITH SHEET DA-1830-05



## KEY PLAN



## LEGEND

- Site boundary
- Line of awning above
- Existing Tree TPZ
- Proposed trees. Refer to planting schedule

## NOTES

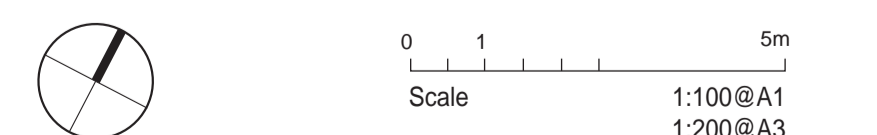
- ① Proposed paving banding to provide visual interest
- ② Proposed raised low planting creating green roof
- ③ Proposed raised planter with feature tree planting
- ④ Location for portable BBQ
- ⑤ Proposed corten steel planters with feature trees
- ⑥ Proposed planter pots with additional feature planting
- ⑦ Raised planter to screen vents and panels on roof
- ⑧ Proposed gravel to provide safe maintenance access to rooftop areas

NOTE:  
All plant species & locations generally in accordance with the Development Application prepared by Sturt Noble Associates dated 15.11.2019 Rev F

**Sturt Noble Associates**  
 Suite 307, 166 Glebe Point Road  
 Glebe NSW 2007  
 T. 02 9211 3744  
 W. www.sturtnoble.com.au  
 landscape architecture  
 environmental & urban design

PROJECT  
**REGIS CARE, BELROSE**  
 181 FOREST WAY, BELROSE NSW 2085  
 CLIENT  
**REGIS**

DRAWING  
**SECOND FLOOR ROOFTOP LANDSCAPE PLAN for section 4.55**  
 DRAWING No. ISSUE DRAWN DATE  
**DA-2319-08 A ml 22.12.2023**



ACN: 164 245 514 ABN: 99 164 245 514  
 THIS DRAWING SHOULD BE READ IN CONJUNCTION WITH ALL RELEVANT CONTRACTS, SPECIFICATIONS, REPORTS AND DRAWINGS. COPYRIGHT OF THIS DRAWING IS VESTED IN STURT NOBLE ASSOCIATES PTY LTD.



# INDICATIVE PLANTING PALETTE

THIS SHEET CORRELATES WITH SHEET DA-1830-06

## COURTYARDS

BOTANICAL NAME	COMMON NAME	POT SIZE	SPACING
<b>TREES</b>			
<i>Acer palmatum</i>	Palmate Maple	100L	A.S
<i>Archontophoenix cunninghamiana</i>	Bangalow Palm	200L	A.S
<i>Brachychiton acerifolius</i>	Illawarra Flame Tree	200L	A.S
<i>Lagerstroemia indica</i>	Crepe Myrtle	100L	A.S
<i>Hymenosporum flavum</i>	Native Frangipani	100L	A.S
<i>Magnolia 'Little Gem'</i>	Magnolia Little Gem	100L	A.S
<i>Tristaniopsis laurina 'Luscious'</i>	Watergum	100L	A.S
<i>Waterhousia floribunda</i>	Weeping Lilly Pilly	200L	A.S
<b>SHRUBS AND GROUNDCOVERS</b>			
<i>Alcantarea imperialis</i>	Giant Bromeliad	5L	1/m2
<i>Alpinia caerulea rubra</i>	Native Ginger	5L	3/m2
<i>Asplenium nidus</i>	Birds Nest fern	25L	3/m2
<i>Blechnum nudum</i>	Fishbone Waterfern	5L	4/m2
<i>Casuarina glauca prostrate</i>	Cousin It	200mm	4/m2
<i>Carpobrotus glaucescens</i>	Pigface	200mm	6/m2
<i>Dichondra argentea</i>	Silverfalls	150mm	6/m2
<i>Gardenia augusta 'Florida'</i>	Gardenia florida	5L	A.S
<i>Genus petriselium</i>	Parsley	200mm	6/m2
<i>Heliotropium arborescens</i>	Cherry Pie	5L	2/m2
<i>Kniphofia 'Royal Standard'</i>	Red Hot Poker	5L	2/m2
<i>Lavandula stoechas</i>	Lavender	5L	2/m2
<i>Liriope muscari 'Isabella'</i>	Lily Turf	150mm	4/m2
<i>Occimomum basilicum</i>	Basil	150mm	4/m2
<i>Rhaphiolepis 'Spring Time'</i>	Indian Hawthorn Bush	5L	2/m2
<i>Rosmarinus 'Blue Lagoon'</i>	Rosemary	5L	2/m2
<i>Thymus vulgaris</i>	Thyme	5L	2/m2
<i>Viola hederacea</i>	Native Violet	75mm	6/m2
<i>Vriesea splendens</i>	Flaming Sword	5L	2/m2
<i>Zamia furfuracea</i>	Cardboard Plant	5L	2/m2

## ROOF AREAS

BOTANICAL NAME	COMMON NAME	POT SIZE	SPACING
<b>TREES</b>			
<i>Plumeria tricolour</i>	Frangipani	100L	A.S
<b>SHRUBS AND GROUNDCOVERS</b>			
<i>Carpobrotus glaucescens</i>	Aussie Rambler	150mm	4/m2
<i>Correa alba</i>	White Correa	5L	2/m2
<i>Gazania sp.</i>	Gazania	200mm	6/m2
<i>Hardenbergia violacea</i>	Purple Coral Pea	150mm	3/m2
<i>Kennedia prostrata</i>	Running Postman	5L	2/m2
<i>Myoporum parvifolium</i>	Yareena	5L	2/m2
<i>Pennisetum alopecuroides</i>	Swamp Fountain Grass	200mm	4/m2
<i>Sedum sp.</i>	Sedum	150mm	6/m2
<i>Westringia fruticosa</i>	Coastal Rosemary	5L	1/m2

## BIORETENTION BASIN BASE

SPECIES	COMMON NAME	PLANTS/50M2	SIZE
<i>Carex appressa</i>	Tussock Sedge	200	hiko
<i>Juncus usitatus</i>	Common Rush	200	hiko

## BIORETENTION BASIN BANKS

SPECIES	COMMON NAME	PLANTS/50M2	SIZE
<i>Carex appressa</i>	Tussock Sedge	150	tube
<i>Lomandra usitatus</i>	Common Rush	150	tube
<i>Lomandra longifolia</i>	Basket Grass	100	tube
<i>Themeda australis</i>	Kangaroo Grass	100	tube

## EXTERNAL GARDENS

BOTANICAL NAME	COMMON NAME	POT SIZE	SPACING
<b>TREES</b>			
<i>Acacia ulicifolia</i>	Prickly Moses	25L	A.S
<i>Banksia ericifolia</i>	Heath-leaved Banksia	25L	A.S
<i>Banksia integrifolia</i>	Coast Banksia	100L	A.S
<i>Banksia serrata</i>	Old-man Banksia	100L	A.S
<i>Cyathea australis</i>	Rough Tree Fern	100L	A.S
<i>Livingstonia australis</i>	Cabbage Tree Palm	200L	A.S
<i>Ficus rubiginosa</i>	Port Jackson Fig	400L	A.S
<i>Tristaniopsis laurina</i>	Water Gum	100L	A.S
<i>Syzygium cascade</i>	Lilly Pilly	25L	A.S
<b>SHRUBS AND GROUNDCOVERS</b>			
<i>Actinotus minor</i>	Lesser Flannel Flower	200mm	3/m2
<i>Aidantum aethiopicum</i>	Maidenhair Fern	200mm	4/m2
<i>Baura rubioides</i>	River Rose	150mm	4/m2
<i>Callistemon Scarlet Flame</i>	Bottle Brush	25L	A.S
<i>Calochlaena dubia</i>	Soft Bracken	200mm	6/m2
<i>Caustis pentandra</i>	Thick Twist Rush	150mm	3/m2
<i>Dendrobium sp.</i>	Orchard	5L	1/m2
<i>Dianella 'Breeze'</i>	Dianella	200mm	4/m2
<i>Dianella caerulea</i>	Blue Fax Lily	150mm	4/m2
<i>Dianella caerulea var. producta</i>	Blue Fax Lily	150mm	4/m2
<i>Doryanthes excelsa</i>	Gymea Lily	25L	1/m2
<i>Gleichenia dicarpa</i>	Tangle Fern	5L	2/m2
<i>Grevillea Royal Mantle</i>	Royal Mantle	5L	A.S
<i>Hardenbergia violacea</i>	Purple Coral Pea	150mm	2/m2
<i>Juncus usitatus</i>	Common Rush	150mm	6/m2
<i>Lomandra filiformis subsp. Filiformis</i>	Wattle Mat-rush	200mm	2/m2
<i>Lomandra longifolia</i>	Spiny Mat Rush	150mm	4/m2
<i>Lomandra 'Nyalla'</i>	Lomandra	150mm	4/m2
<i>Lomandra glauca</i>	Blue Ridge	150mm	4/m2
<i>Lomandra tanika</i>	Lomandra	200mm	4/m2
<i>Westringia fruticosa</i>	Coastal Rosemary	5L	2/m2
<i>Xanthorisa pilosa</i>	Woolly Xanthosia	5L	4/m2
<i>Xanthorrhoea media</i>	Grass Tree	25L	A.S

## ENDEMIC SCREEN PLANTING

BOTANICAL NAME	COMMON NAME	POT SIZE	SPACING
<b>TREES</b>			
<i>Angophora hispida</i>	Dwarf Apple	Tube	1/5m2
<i>Corymbia gummifera</i>	Red Bloodwood	Tube	1/10m2
<i>Eucalyptus haemastoma</i>	Scribbly Gum	Tube	1/10m2
<i>Eucalyptus leuhmanniana</i>	Yellow Top Mallee Ash	Tube	1/5m2
<i>Eucalyptus obstans</i>	Port Jackson Mallee	Tube	1/5m2
<i>Eucalyptus racemosa</i>	Narrow-leaved Scribbly Gum	Tube	1/10m2
<b>SHRUBS AND GROUNDCOVERS</b>			
<i>Xanthosia tridentata</i>	Rock Xanthosia	Tube	3/m2
<i>Allocasuarina distyla</i>	Scrub She-oak	Tube	3/m2
<i>Bauera microphylla</i>		Tube	3/m2
<i>Hibbertia linearis</i>		Tube	3/m2
<i>Hibbertia riparia</i>	Erect Guinea-flower	Tube	3/m2
<i>Bauera rubioides</i>	River Rose	Tube	3/m2
<i>Epacris microphylla</i>	Coast Coral Heath	Tube	3/m2
<i>Epacris obtusifolia</i>	Blunt-leaf Heath	Tube	3/m2
<i>Daviesia corymbosa</i>		Tube	3/m2
<i>Dillwynia floribunda</i>		Tube	3/m2
<i>Pultenaea stipularis</i>	Handsome Bush-pea	Tube	3/m2
<i>Pultenaea tuberculata</i>	Wreath Bush-pea	Tube	3/m2
<i>Acacia myrtifolia</i>	Red-stemmed Wattle	Tube	3/m2
<i>Acacia suaveolens</i>	Sweet Wattle	Tube	3/m2
<i>Baeckea imbricata</i>	Heath Myrtle	Tube	3/m2
<i>Kunzea capitata</i>		Tube	3/m2
<i>Leptospermum squarrosom</i>	Peach Blossom Tea-tree	Tube	3/m2
<i>Leptospermum trinervium</i>	Flaky-barked Tea-tree	Tube	3/m2
<i>Banksia ericifolia</i>	Heath-leaved Banksia	Tube	3/m2
<i>Banksia marginata</i>	Silver Banksia	Tube	3/m2
<i>Banksia oblongifolia</i>	Fern-leaved Banksia	Tube	3/m2
<i>Banksia paludosa</i>	Swamp Banksia	Tube	3/m2
<i>Banksia serrata</i>	Old-man Banksia	Tube	3/m2
<i>Grevillea buxifolia</i>	Grey Spider Flower	Tube	3/m2
<i>Grevillea sphacelata</i>	Grey Spider Flower	Tube	3/m2
<i>Hakea dactyloides</i>	Finger Hakea	Tube	3/m2
<i>Hakea teretifolia</i>	Needlebush	Tube	3/m2
<i>Isopogon anemonifolius</i>	Broad-leaf Drumsticks	Tube	3/m2
<i>Isopogon anethifolius</i>	Narrow-leaf Drumsticks	Tube	3/m2
<i>Lambertia formosa</i>	Mountain Devil	Tube	3/m2
<i>Persoonia lanceolata</i>	Lance Leaf Geebung	Tube	3/m2
<i>Persoonia pinifolia</i>	Pine-leaved Geebung	Tube	3/m2
<i>Eriostemon australasius</i>	Pink Wax Flower	Tube	3/m2
<i>Lomandra glauca</i>	Pale Mat-rush	Tube	3/m2

## INDICATIVE SPECIES



*Acer palmatum*



*Blechnum nudum*



*Kennedua prostrata*



*Gazania sp.*



*Banksia integrifolia*



*Cyathea australis*



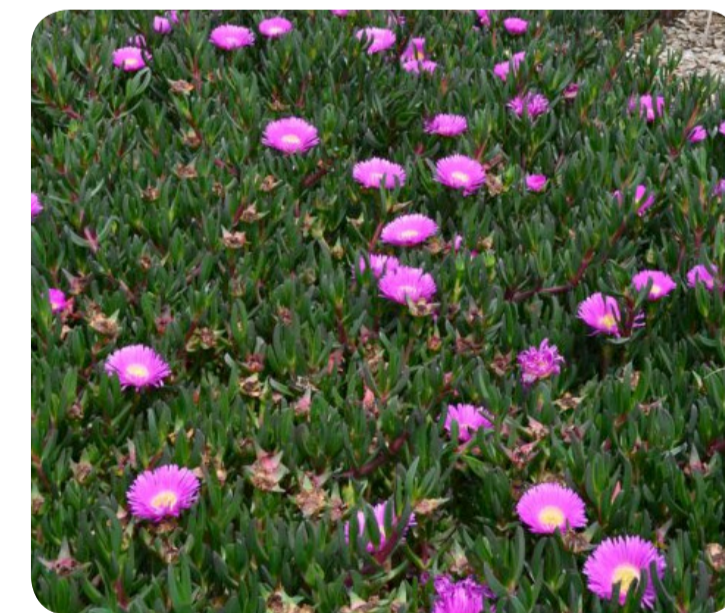
*Magnolia 'Little Gem'*



*Kniphofia 'Royal Standard'*



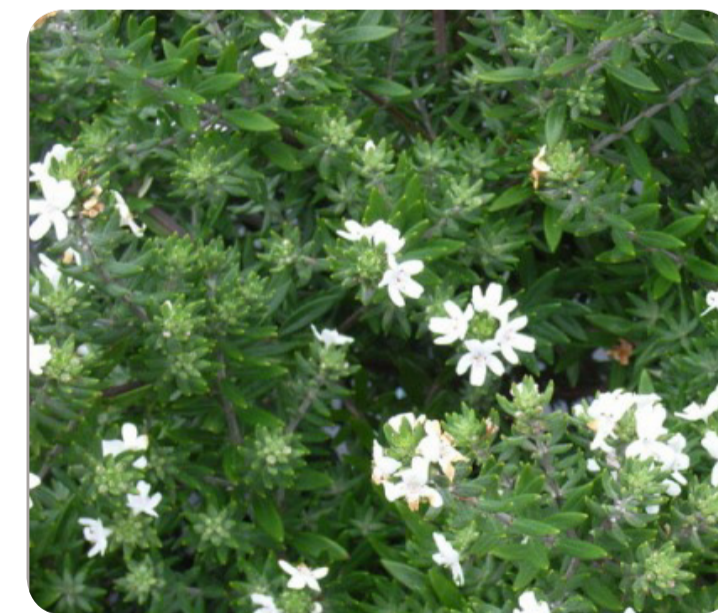
*Hardenbergia violacea*



*Carpobrotus glaucescens*



*Banksia serrata*



*Westringia fruticosa*



*Viola hederacea*



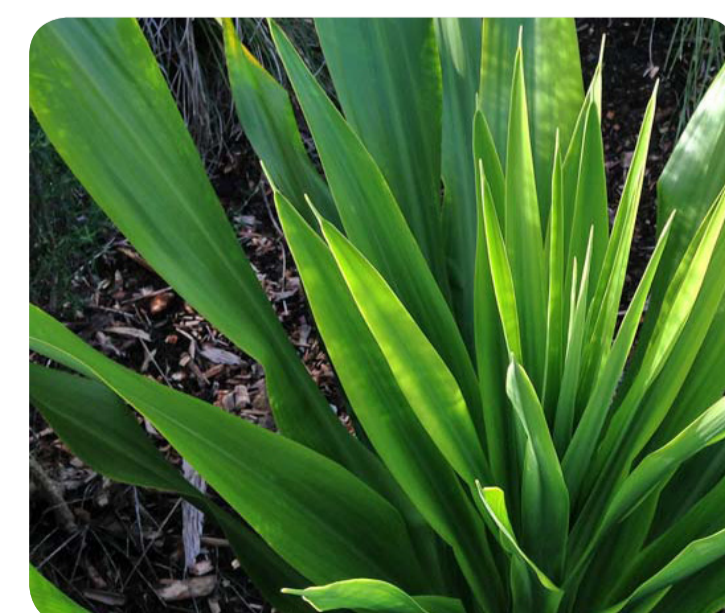
*Alpinia caerulea rubra*



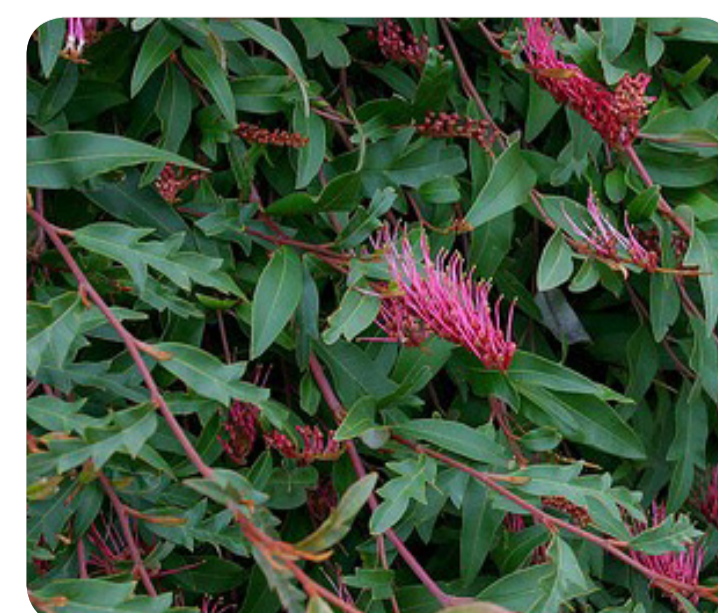
*Pennisetum alopecuroides*



*Plumeria tricolour*



*Doryanthes excelsa*



*Grevillea Royal Mantle*

## INDICATIVE SPECIES

## INDICATIVE SPECIES

NOTE:  
All plant species & locations generally in accordance with the Development Application prepared by Sturt Noble Associates dated 15.11.2019 Rev F



PROJECT  
**REGIS CARE, BELROSE**  
181 FOREST WAY, BELROSE NSW 2085

CLIENT  
**REGIS**

DRAWING  
**INDICATIVE PLANTING PALETTE for section 4.55**

DRAWING No. ISSUE DRAWN DATE  
**DA-2319-09 A ml 22.12.2023**

Scale 1:100@A1  
1:200@A3

ACN: 164 245 514 ABN: 99 164 245 514  
THIS DRAWING SHOULD BE READ IN CONJUNCTION WITH ALL RELEVANT CONTRACTS, SPECIFICATIONS, REPORTS AND DRAWINGS. COPYRIGHT OF THIS DRAWINGS IS VESTED IN STURT NOBLE ASSOCIATES PTY LTD.

**INDICATIVE MATERIAL PALETTE**  
THIS SHEET CORRELATES WITH SHEET DA-1830-07

**COURTYARDS**



Seating absorbed in decorative planting

**ROOF AREAS**



Colourful green roof planting

**EXTERNAL GARDENS**



Native planting connecting with surrounding landscape

**INDICATIVE MATERIALS AND SPACES**



Raised seating planter



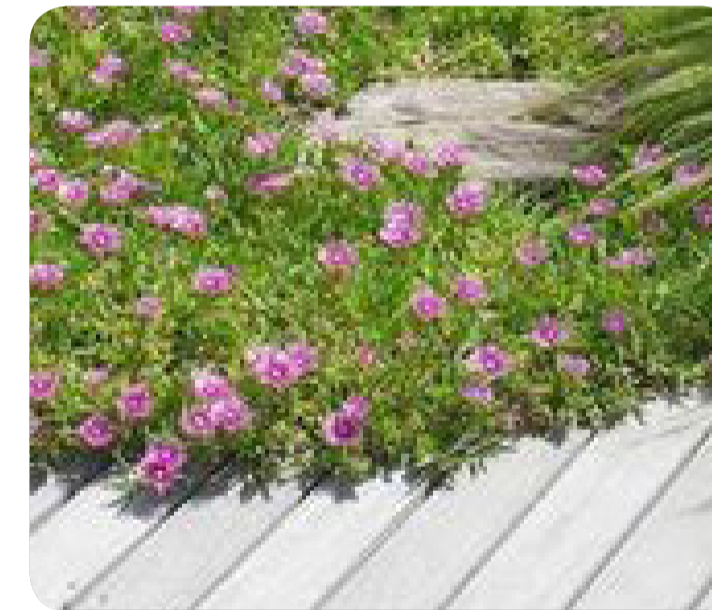
Raised gardening beds for elderly



Pots planted with colourful flowers



Vista opportunities



Planting creeping over paving



Sandstone retaining walls



Ornamental and edible planting



Sense of path and destination



Roof top seating and viewing spaces



Sculptural pots



Hardscape to softscape junctions



Coastal Heath Ecological Community



Internal courtyard character



Outdoor seating areas



Collections of pots



*Pennisetum alopecuroides*



Outdoor seating opportunities



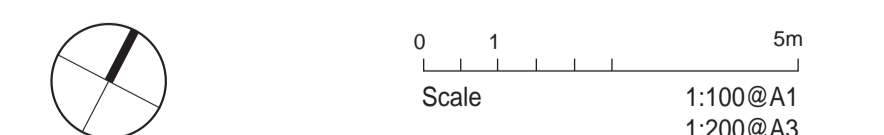
Paths through garden

**NOTE:**  
All plant species & locations generally in accordance with the Development Application prepared by Sturt Noble Associates dated 15.11.2019 Rev F

**Sturt Noble Associates**  
Suite 307, 166 Glebe Point Road  
Glebe NSW 2007  
T. 02 9211 3744  
W. www.sturnoble.com.au  
landscape architecture  
environmental & urban design

**PROJECT**  
REGIS CARE, BELROSE  
181 FOREST WAY, BELROSE NSW 2085  
**CLIENT**  
REGIS

**DRAWING**  
INDICATIVE MATERIAL PALETTE for section 4.55  
DRAWING No. DA-2319-09 ISSUE A DRAWN ml DATE 22.12.2023



ACN: 164 245 514 ABN: 99 164 245 514  
THIS DRAWING SHOULD BE READ IN CONJUNCTION WITH ALL RELEVANT CONTRACTS, SPECIFICATIONS, REPORTS AND DRAWINGS. COPYRIGHT OF THIS DRAWINGS IS VESTED IN STURT NOBLE ASSOCIATES PTY LTD.