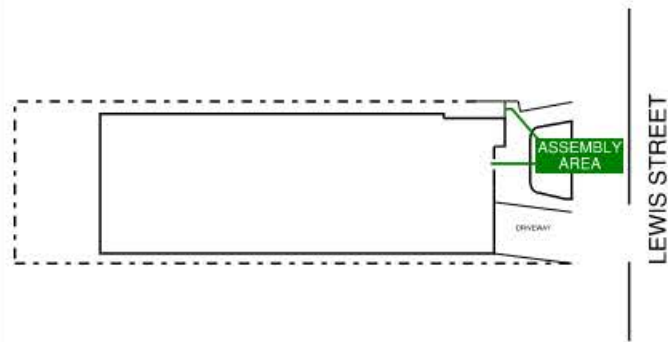


EVACUATION DIAGRAM

11 LEWIS STREET BALGOWLAH HEIGHTS NSW 2093

ASSEMBLY AREA



EMERGENCY PROCEDURES

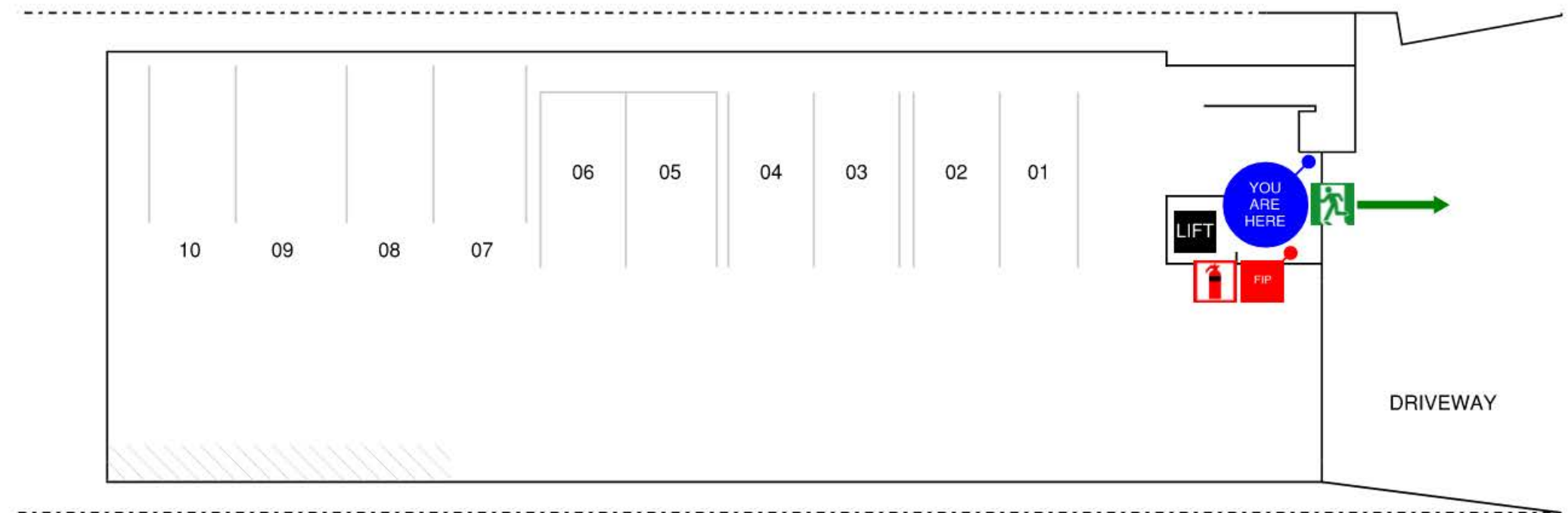
- | | |
|----------|--|
| R | Remove
Anyone in immediate danger |
| A | Alert others & raise the alarm
Advise all occupants, Contact Emergency Services,
Contact Chief Warden |
| C | Contain
The emergency to an area |
| E | Evacuate
To a safer place |

IN AN EMERGENCY



LEGEND

- | | |
|--|--|
|  Exit |  CO2 Extinguisher |
|  Fire Indicator Panel | |
|  Evacuation route |  Alternate route |



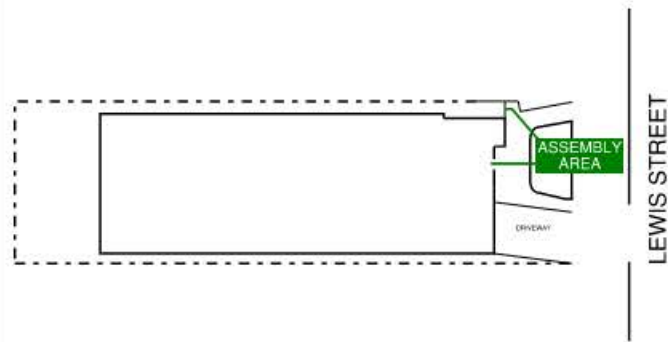
DRAFT

● OTHER "YOU ARE HERE" LOCATIONS

EVACUATION DIAGRAM

11 LEWIS STREET BALGOWLAH HEIGHTS NSW 2093

ASSEMBLY AREA



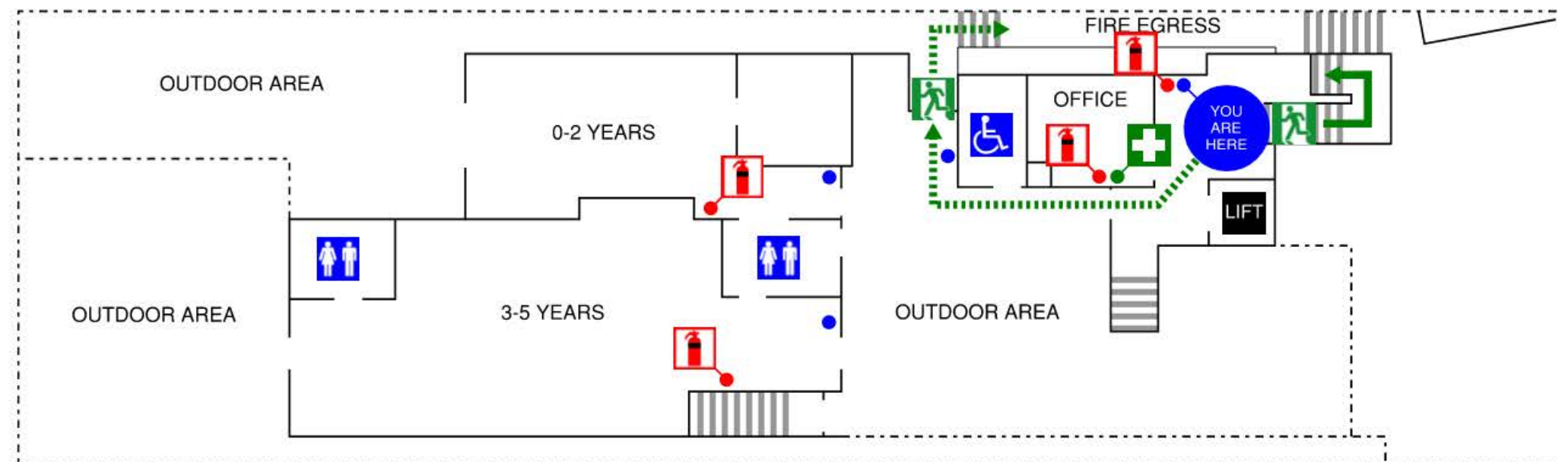
EMERGENCY PROCEDURES

- | | |
|----------|--|
| R | Remove
Anyone in immediate danger |
| A | Alert others & raise the alarm
Advise all occupants, Contact Emergency Services,
Contact Chief Warden |
| C | Contain
The emergency to an area |
| E | Evacuate
To a safer place |

IN AN EMERGENCY



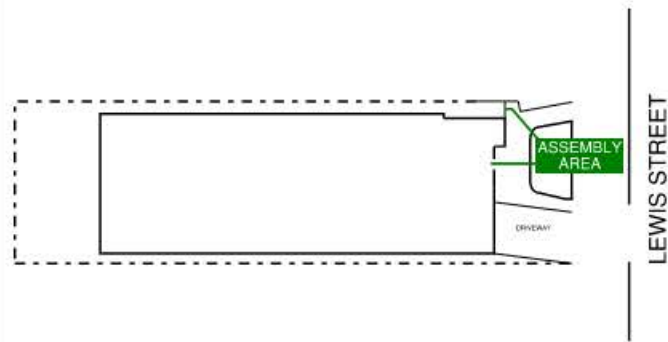
LEGEND



DRAFT

● OTHER "YOU ARE HERE" LOCATIONS

ASSEMBLY AREA



EMERGENCY PROCEDURES

- | | |
|----------|--|
| R | Remove
Anyone in immediate danger |
| A | Alert others & raise the alarm
Advise all occupants, Contact Emergency Services,
Contact Chief Warden |
| C | Contain
The emergency to an area |
| E | Evacuate
To a safer place |

IN AN EMERGENCY

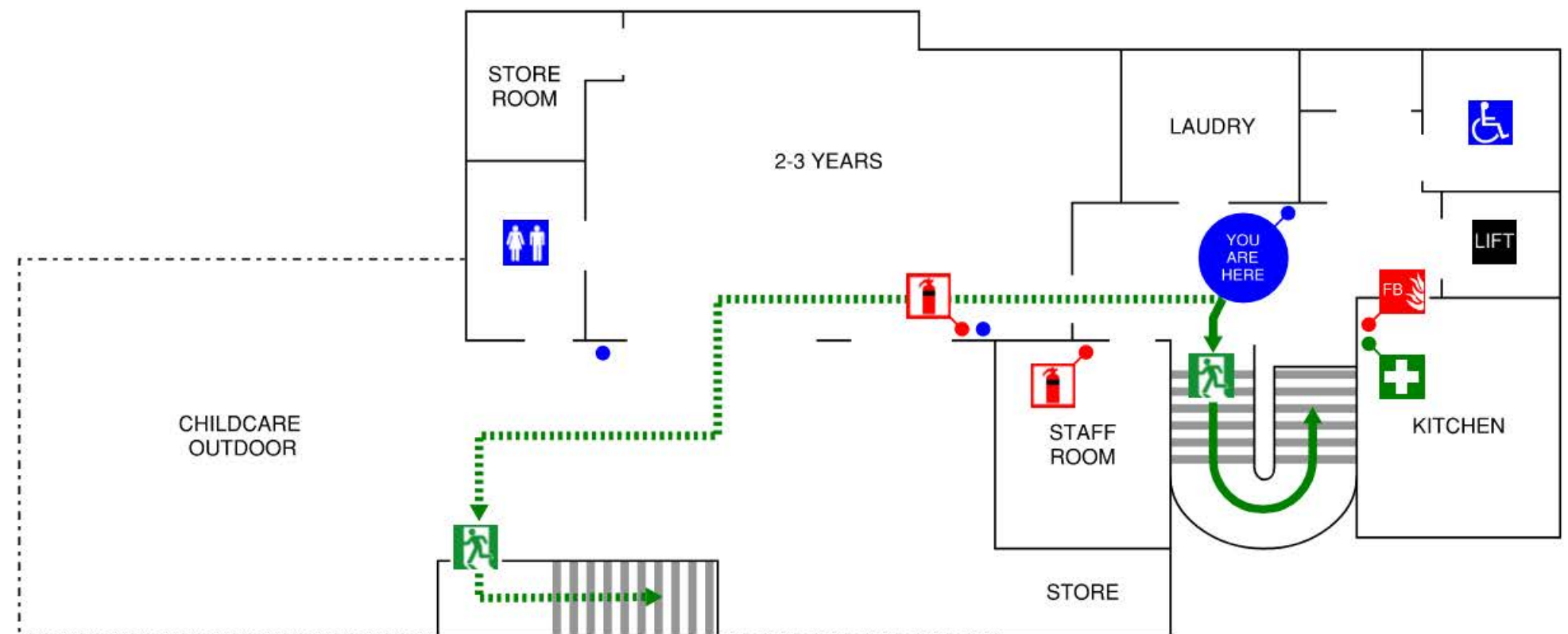


LEGEND

- | | |
|--|---|
|  Exit |  First Aid |
|  Fire Blanket |  Powder Extinguisher |
|  CO2 Extinguisher | |
|  Evacuation route |  Alternate route |

EVACUATION DIAGRAM

11 LEWIS STREET BALGOWLAH HEIGHTS NSW 2093



DRAFT

● OTHER "YOU ARE HERE" LOCATIONS