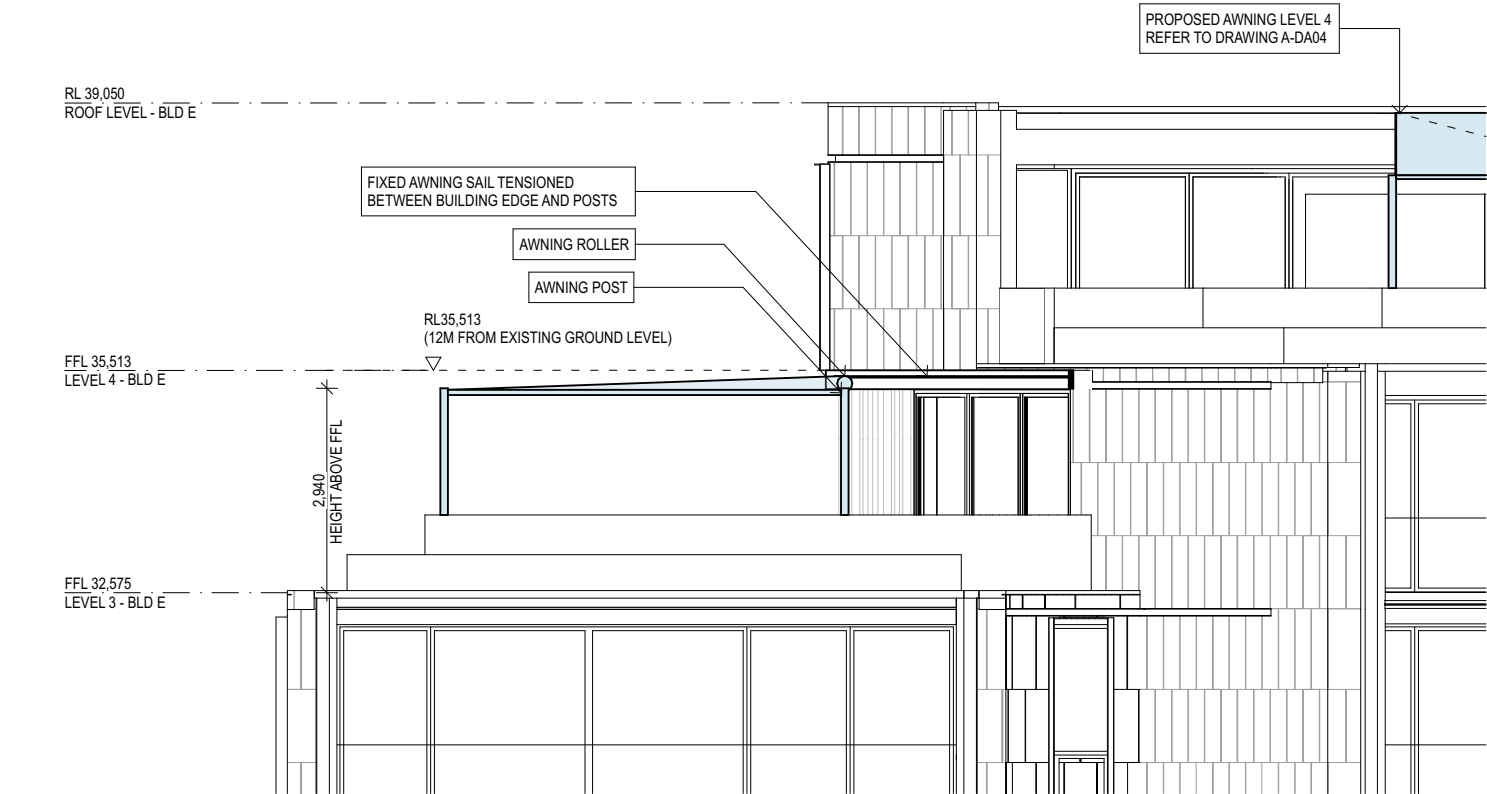
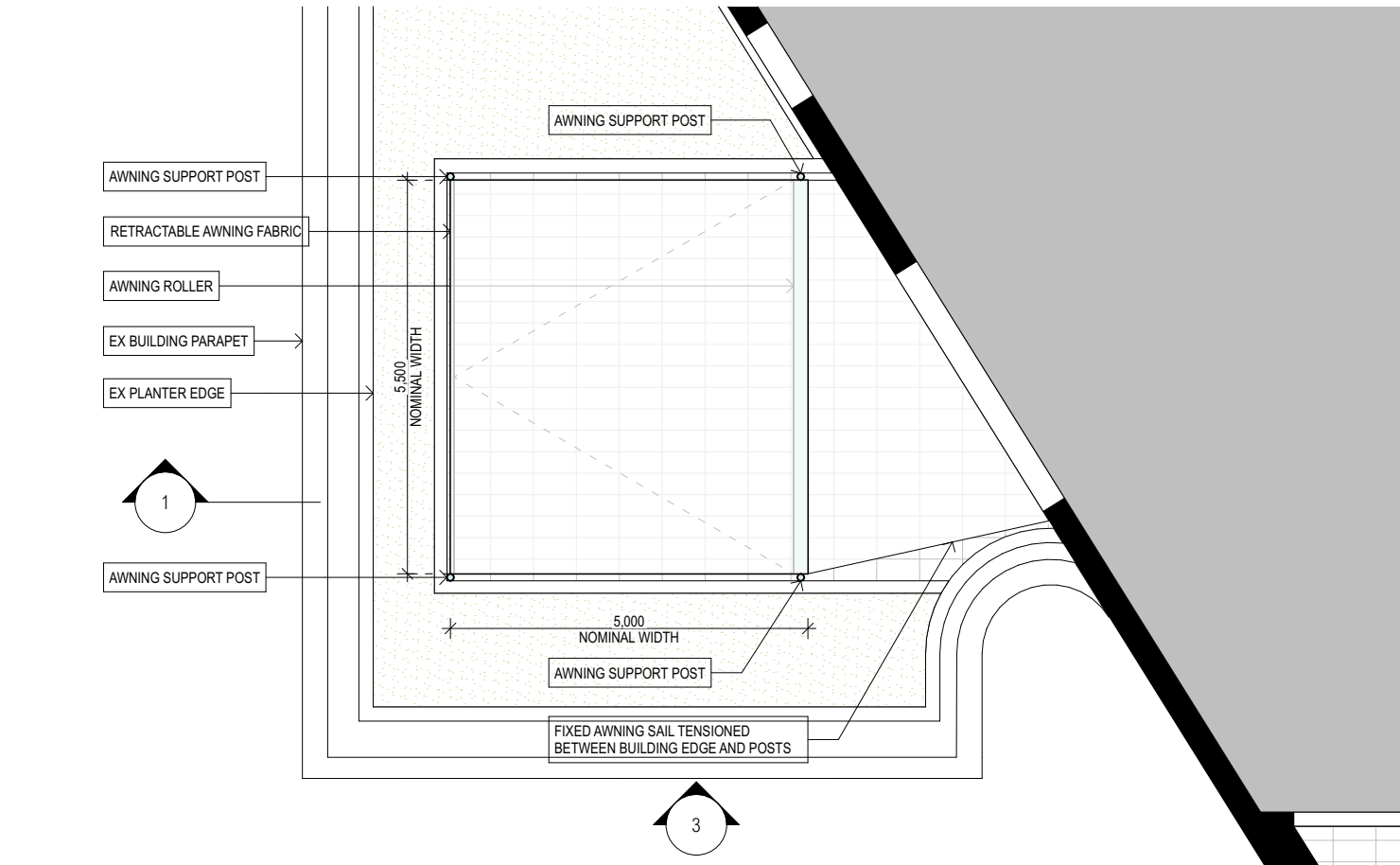


1  
-  
AWNING BLD-E LEVEL 3 SECTION  
1:100



3  
-  
AWNING BLD-E LEVEL 3 ELEVATION  
1:100



2  
-  
AWNING BLD-E LEVEL 3 PLAN  
1:100



AWNING FRAME: ANODIZED ALUMINIUM  
(TO MATCH BLD E DARK FRAME DETAILS)



AWNING FABRIC: BEIGE

FOR DEVELOPMENT APPLICATION

ARCHITECT

**CHROFI**

3/1 THE CORSO MANLY NSW 2095 AUSTRALIA  
T +61 2 8096 8500 E info@chrofi.com  
CHOI ROPHA FIGHERA P/L ACN 144 714 885 ATF CHOI ROPHA FIGHERA UNIT TRUST T/A CHROFI ABN 22 365 257 167 NOMINATED ARCHITECT JOHN CHOI 8706 T/A ROPHA FIGHERA STEVEN FIGHERA 9009  
THIS DRAWING SHOULD BE READ IN CONJUNCTION WITH ALL RELEVANT CONTRACTS, SPECIFICATION, REPORT AND DRAWINGS. DO NOT SCALE DRAWINGS. DIMENSIONS GOVERN. VERIFY ALL DIMENSIONS ON SITE BEFORE CONSTRUCTION. COPYRIGHT OF THIS DRAWING IS VESTED IN CHROFI.

REV	DATE	ISSUE
A	17/6/21	FOR DEVELOPMENT APPLICATION
B	20/7/21	FOR DEVELOPMENT APPLICATION
C	1/9/21	FOR DEVELOPMENT APPLICATION
D	24/9/21	FOR DEVELOPMENT APPLICATION
E	22/2/22	FOR DEVELOPMENT APPLICATION
F	24/3/22	FOR DEVELOPMENT APPLICATION

REV DATE ISSUE

PROJECT

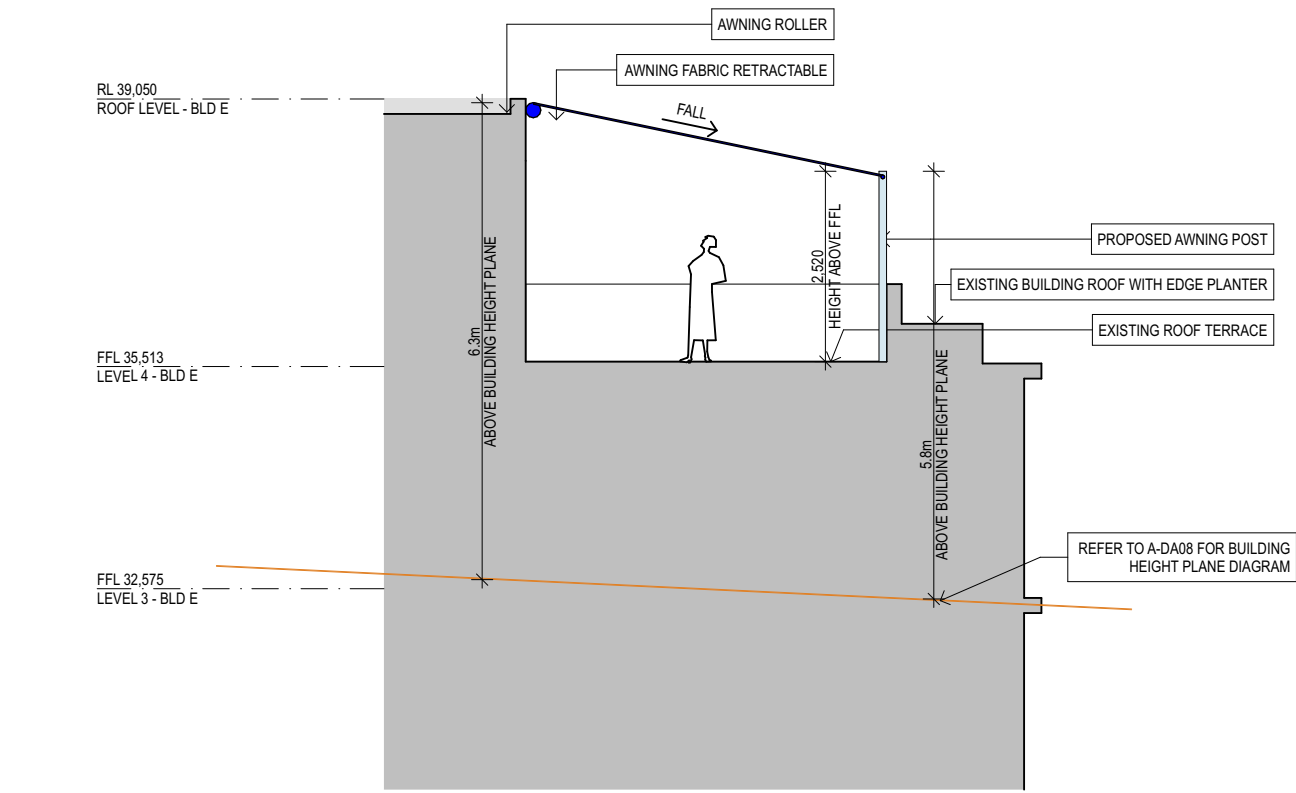
Watermark Freshwater - Building E Awnings  
80 Evans Street, Freshwater NSW 2096

PROJECT NUMBER	PLOT DATE	DRAWN	CHECKED	SHEET SCALE	SHEET SIZE	NORTH
1354	24/3/22	CL	FR	1:100	A3	

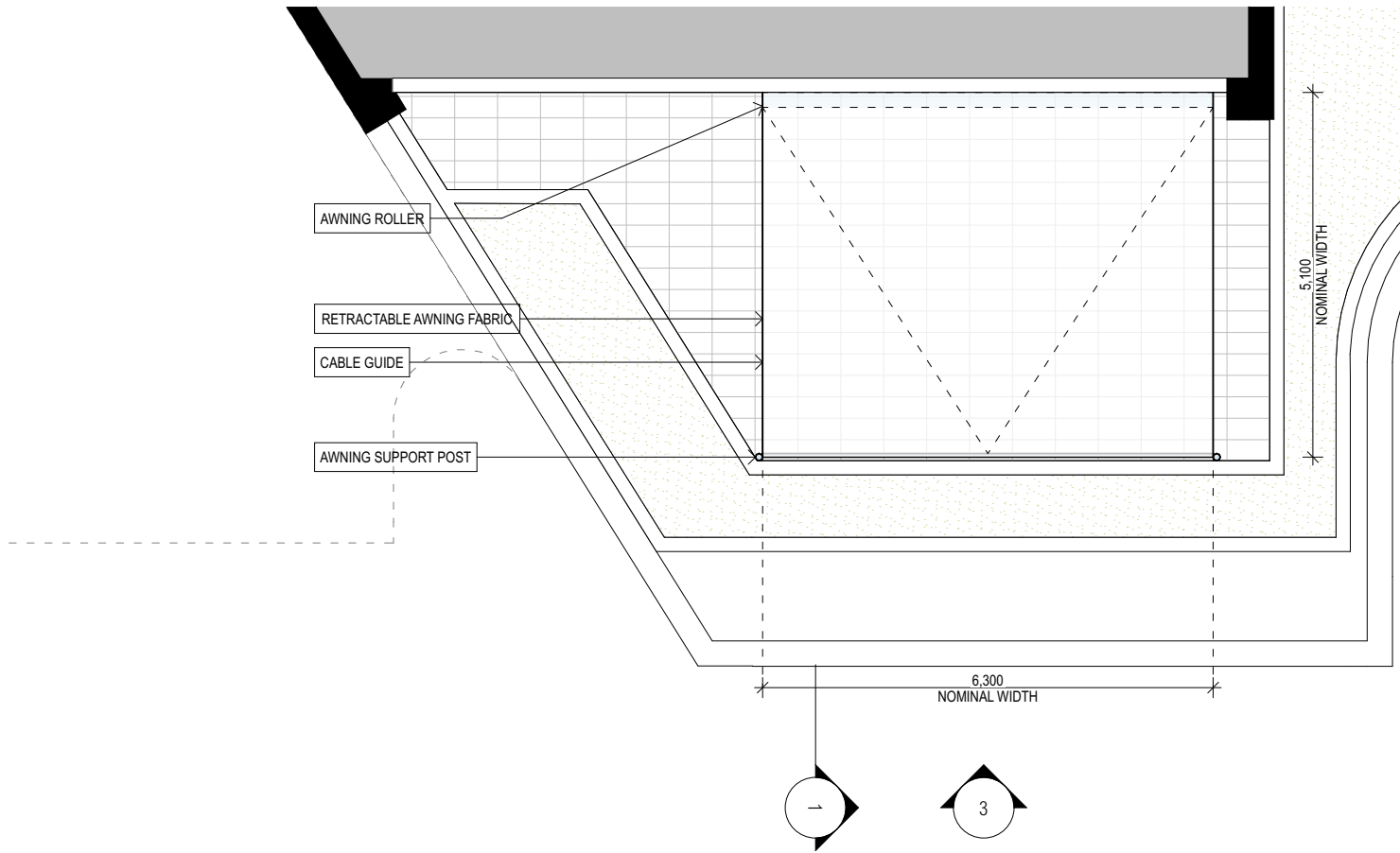
SHEET TITLE

BUILDING E - LEVEL 3 - WEST AWNING  
DETAIL

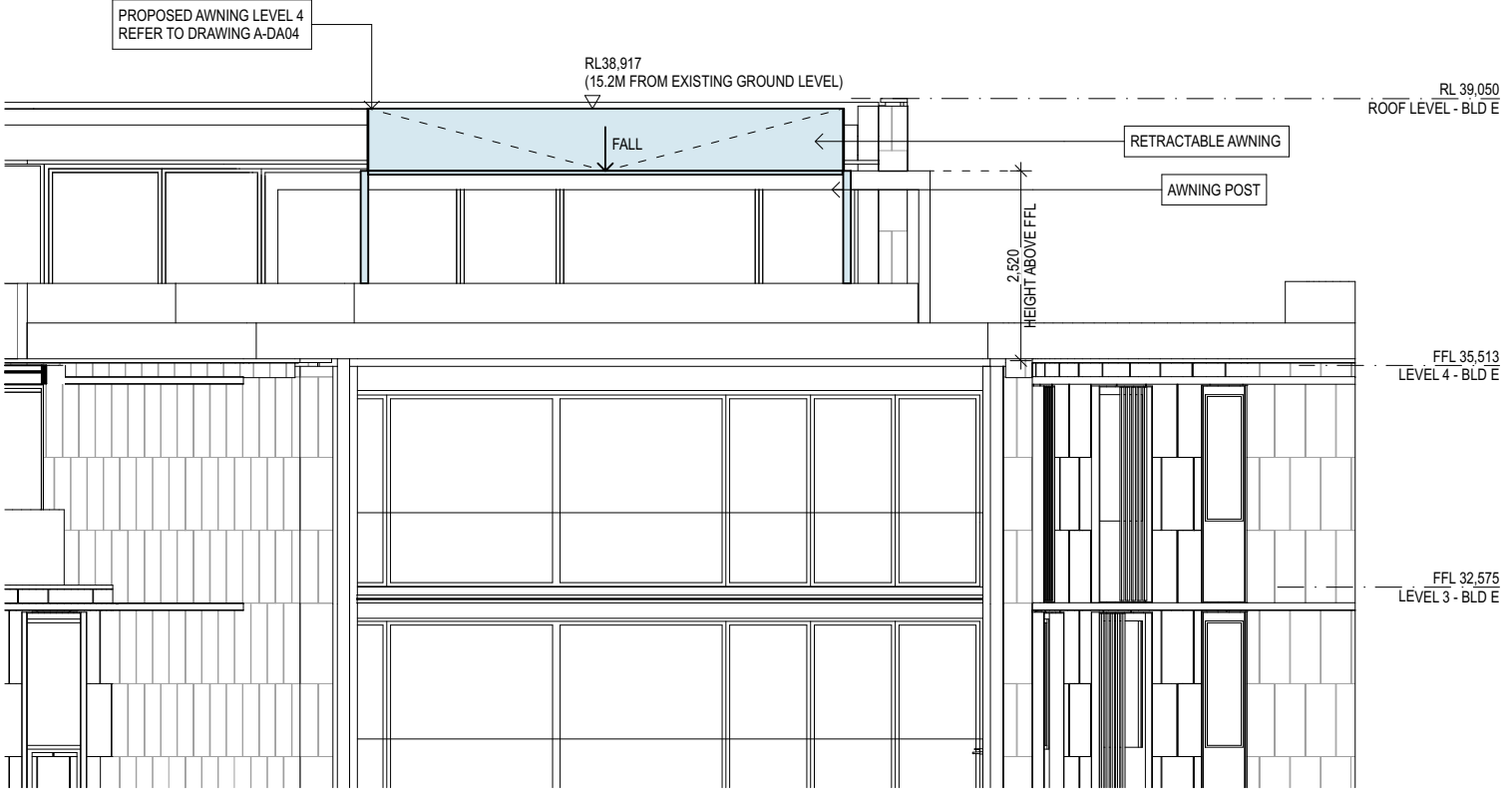
SHEET NUMBER	REVISION
A-DA02	F



1  
-  
AWNING BLD-E LEVEL 4 SECTION  
1:100



2  
-  
AWNING BLD-E LEVEL 4 PLAN  
1:100



3  
-  
AWNING BLD-E LEVEL 4 ELEVATION  
1:100



AWNING FRAME: ANODIZED ALUMINIUM  
(TO MATCH BLD E DARK FRAME DETAILS)



AWNING FABRIC: BEIGE

FOR DEVELOPMENT APPLICATION

ARCHITECT

**CHROFI**

3/1 THE CORSO MANLY NSW 2095 AUSTRALIA  
T +61 2 8096 8500 E info@chrofi.com  
CHOI ROPHA FIGHERA P/L ACN 144 714 885 ATF CHOI ROPHA FIGHERA UNIT TRUST T/A CHROFI ABN 22 365 257 187 NOMINATED ARCHITECT JOHN CHOI 8706 TAI ROPHA 6566 STEVEN FIGHERA 6609  
THIS DRAWING SHOULD BE READ IN CONJUNCTION WITH ALL RELEVANT CONTRACTS, SPECIFICATION, REPORT AND DRAWINGS. DO NOT SCALE DRAWINGS. DIMENSIONS GOVERN. VERIFY ALL DIMENSIONS ON SITE BEFORE CONSTRUCTION. COPYRIGHT OF THIS DRAWING IS VESTED IN CHROFI.

REV	DATE	ISSUE
A	17/6/21	FOR DEVELOPMENT APPLICATION
B	20/7/21	FOR DEVELOPMENT APPLICATION
C	1/9/21	FOR DEVELOPMENT APPLICATION
D	24/9/21	FOR DEVELOPMENT APPLICATION
E	22/2/22	FOR DEVELOPMENT APPLICATION
F	24/3/22	FOR DEVELOPMENT APPLICATION

REV DATE ISSUE

PROJECT

Watermark Freshwater - Building E Awnings  
80 Evans Street, Freshwater NSW 2096

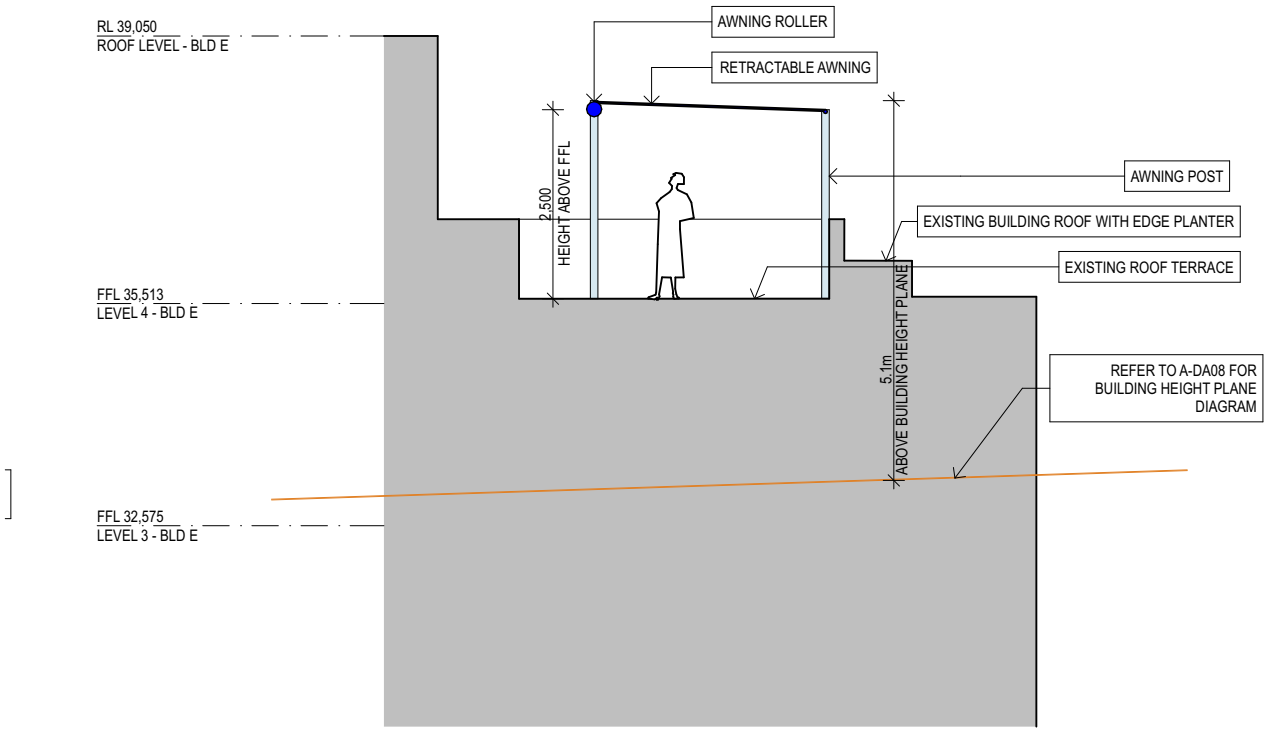
PROJECT NUMBER	PLOT DATE	DRAWN	CHECKED	SHEET SCALE	SHEET SIZE
1354	24/3/22	CL	FR	1:100	A3



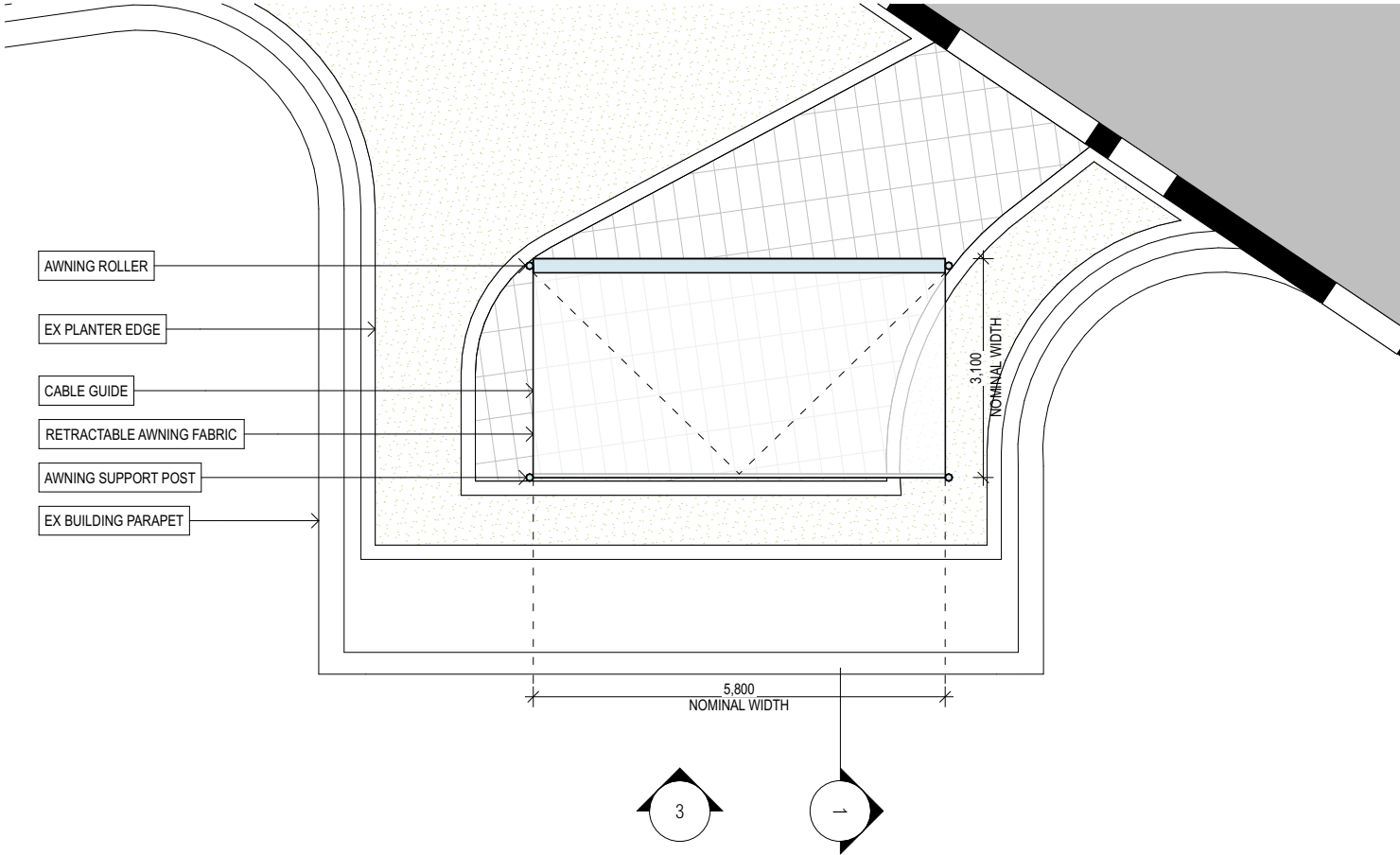
SHEET TITLE

BUILDING E - LEVEL 4 - SOUTH AWNING  
DETAIL

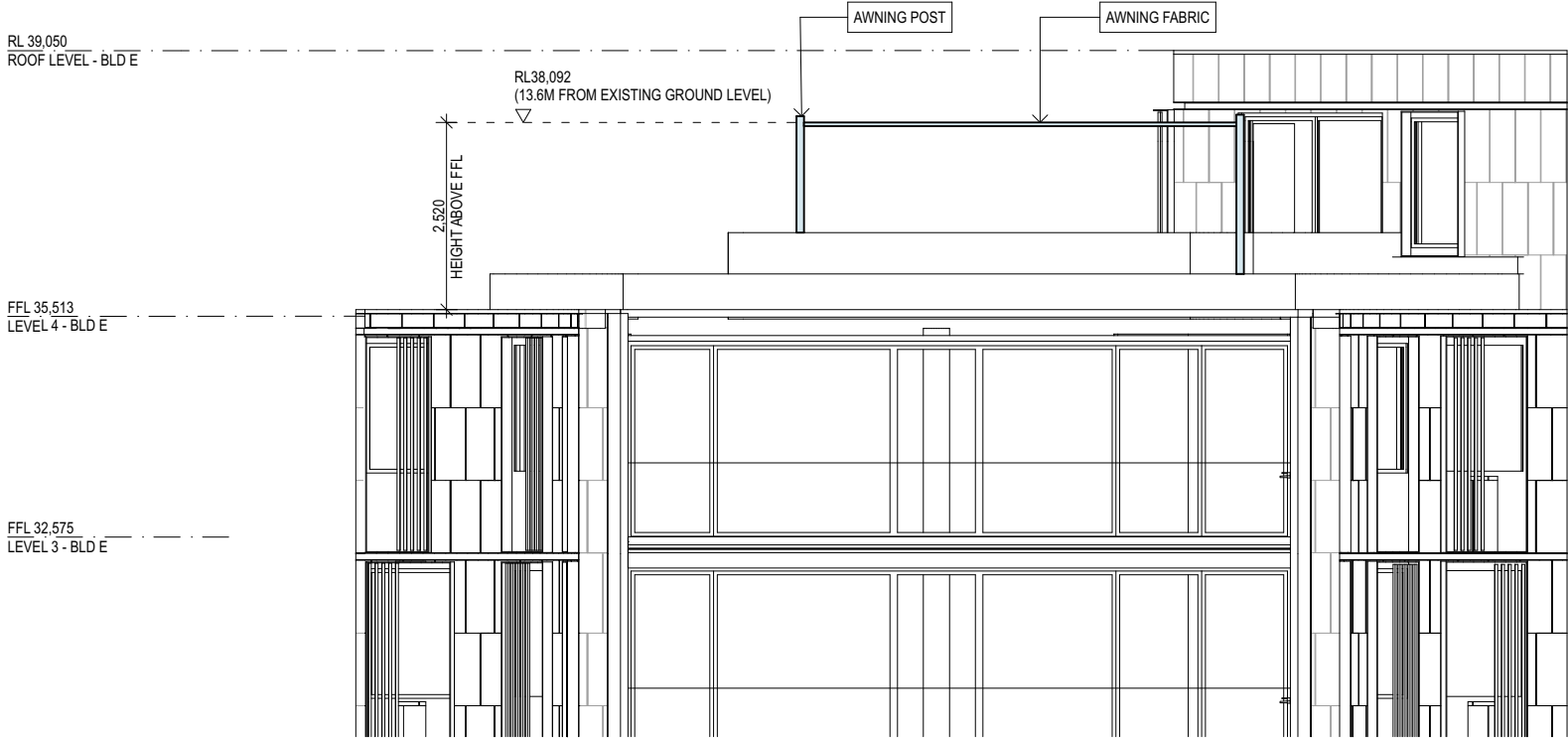
SHEET NUMBER	REVISION
A-DA03	F



1  
-  
AWNING BLD-E LEVEL 4 SECTION  
1:100



2  
-  
AWNING BLD-E LEVEL 4 PLAN  
1:100



3  
-  
AWNING BLD-E LEVEL 4 ELEVATION  
1:100



AWNING FRAME: ANODIZED ALUMINIUM  
(TO MATCH BLD E DARK FRAME DETAILS)



AWNING FABRIC: BEIGE

FOR DEVELOPMENT APPLICATION

ARCHITECT

**CHROFI**

3/1 THE CORSO MANLY NSW 2095 AUSTRALIA  
T +61 2 8096 8500 E info@chrofi.com  
CHOI ROPHA FIGHERA P/L ACN 144 714 885 ATF CHOI ROPHA FIGHERA UNIT TRUST T/A CHROFI ABN 22 365 257 167 NOMINATED ARCHITECT JOHN CHOI 8706 TAI ROPHA 6566 STEVEN FIGHERA 6609  
THIS DRAWING SHOULD BE READ IN CONJUNCTION WITH ALL RELEVANT CONTRACTS, SPECIFICATION, REPORT AND DRAWINGS. DO NOT SCALE DRAWINGS. DIMENSIONS GOVERN. VERIFY ALL DIMENSIONS ON SITE BEFORE CONSTRUCTION. COPYRIGHT OF THIS DRAWING IS VESTED IN CHROFI.

REV	DATE	ISSUE
A	17/6/21	FOR DEVELOPMENT APPLICATION
B	20/7/21	FOR DEVELOPMENT APPLICATION
C	1/9/21	FOR DEVELOPMENT APPLICATION
D	24/9/21	FOR DEVELOPMENT APPLICATION
E	22/2/22	FOR DEVELOPMENT APPLICATION
F	24/3/22	FOR DEVELOPMENT APPLICATION

REV DATE ISSUE

PROJECT

Watermark Freshwater - Building E Awnings  
80 Evans Street, Freshwater NSW 2096

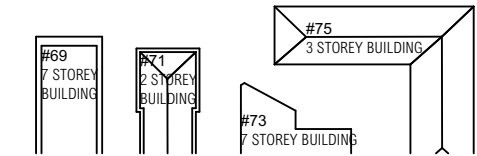
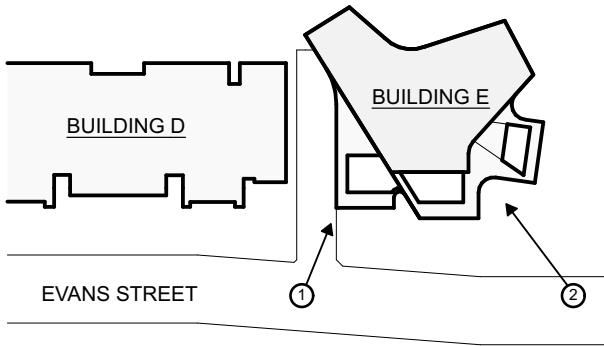
PROJECT NUMBER	PLOT DATE	DRAWN	CHECKED	SHEET SCALE	SHEET SIZE	NORTH
1354	24/3/22	CL	FR	1:100	A3	

SHEET TITLE

BUILDING E - LEVEL 4 - EAST AWNING  
DETAIL

SHEET NUMBER	REVISION
A-DA04	F





1  
-  
INDICATIVE STREET VIEW 1  
VIEW FROM EVANS STREET



2  
-  
INDICATIVE STREET VIEW 2  
VIEW FROM EVANS STREET

FOR DEVELOPMENT APPLICATION

ARCHITECT

**CHROFI**

3/1 THE CORSO MANLY NSW 2095 AUSTRALIA  
T +61 2 8096 8500 E info@chrofi.com  
CHOI ROPHA FIGHERA P/L ACN 144 714 885 ATF CHOI ROPHA FIGHERA UNIT TRUST T/A CHROFI ABN 22 365 257 187 NOMINATED ARCHITECT JOHN CHOI 8706 TAI ROPHA 6566 STEVEN FIGHERA 6609  
THIS DRAWING SHOULD BE READ IN CONJUNCTION WITH ALL RELEVANT CONTRACTS, SPECIFICATION, REPORT AND DRAWINGS. DO NOT SCALE DRAWINGS. DIMENSIONS GOVERN. VERIFY ALL DIMENSIONS ON SITE BEFORE CONSTRUCTION. COPYRIGHT OF THIS DRAWING IS VESTED IN CHROFI.

REV	DATE	ISSUE
A	17/6/21	FOR DEVELOPMENT APPLICATION
B	20/7/21	FOR DEVELOPMENT APPLICATION
C	1/9/21	FOR DEVELOPMENT APPLICATION
D	24/9/21	FOR DEVELOPMENT APPLICATION
F	24/3/22	FOR DEVELOPMENT APPLICATION

REV DATE ISSUE

PROJECT

Watermark Freshwater - Building E Awnings  
80 Evans Street, Freshwater NSW 2096

PROJECT NUMBER	PLOT DATE	DRAWN	CHECKED	SHEET SCALE	SHEET SIZE
1354	24/3/22	CL	FR	NTS	A3



SHEET TITLE

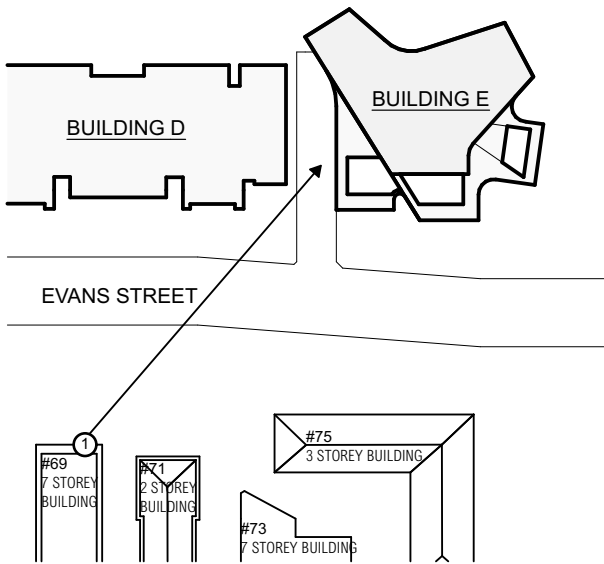
BUILDING E - INDICATIVE STREET VIEW

SHEET NUMBER

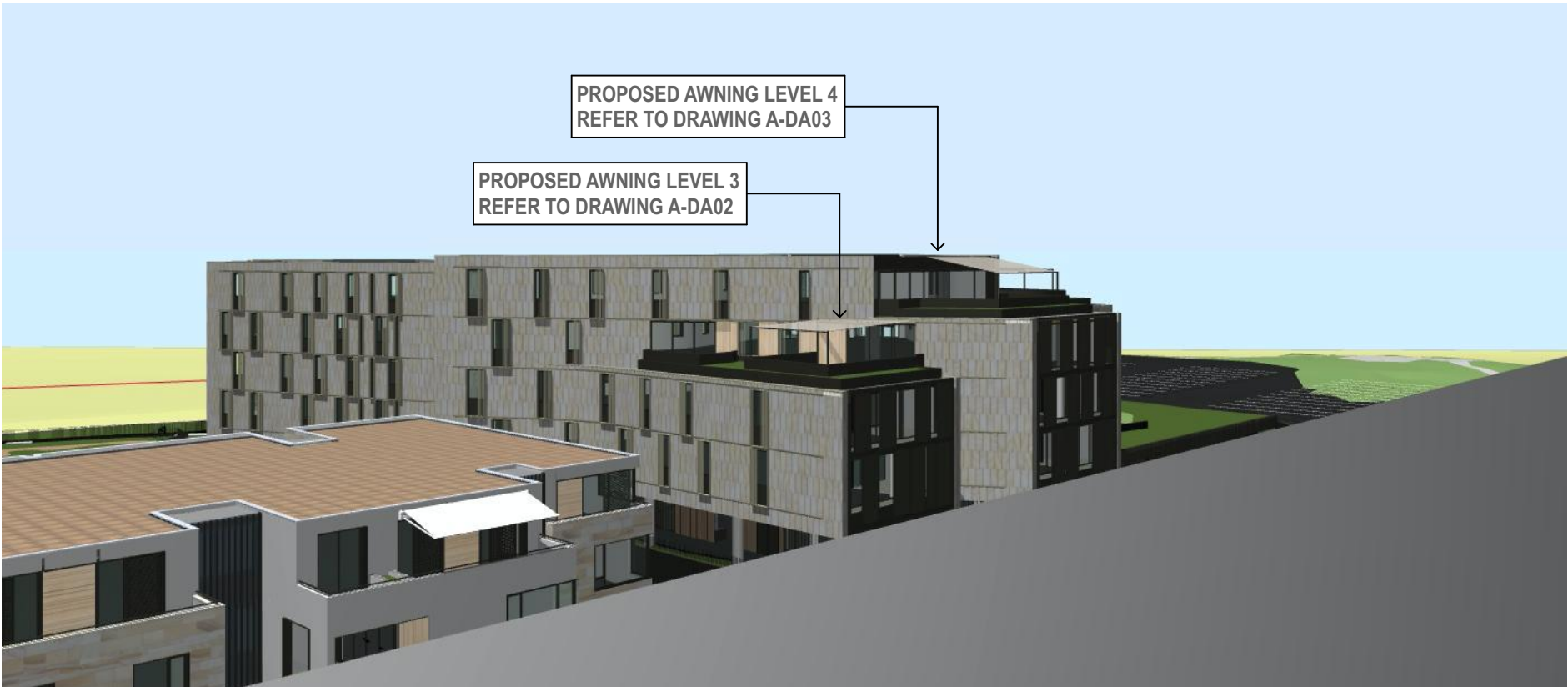
A-DA05

REVISION

F



1  
-  
EXISTING VIEW 1  
VIEW FROM 69 EVANS STREET  
(LEVEL 7 - BALCONY - RL40,000)



2  
-  
PROPOSED VIEW 1  
VIEW FROM 69 EVANS STREET  
(LEVEL 7 - BALCONY - RL40,000)

FOR DEVELOPMENT APPLICATION

ARCHITECT

**CHROFI**

3/1 THE CORSO MANLY NSW 2095 AUSTRALIA  
T +61 2 8096 8500 E info@chrofi.com  
CHOI ROPHA FIGHERA P/L ACN 144 714 885 ATF CHOI ROPHA FIGHERA UNIT TRUST T/A CHROFI ABN 22 365 257 187 NOMINATED ARCHITECT JOHN CHOI 8706 TAI ROPHA 6566 STEVEN FIGHERA 6609  
THIS DRAWING SHOULD BE READ IN CONJUNCTION WITH ALL RELEVANT CONTRACTS, SPECIFICATION, REPORT AND DRAWINGS. DO NOT SCALE DRAWINGS. DIMENSIONS GOVERN. VERIFY ALL DIMENSIONS ON SITE BEFORE CONSTRUCTION. COPYRIGHT OF THIS DRAWING IS VESTED IN CHROFI.

REV	DATE	ISSUE
A	17/6/21	FOR DEVELOPMENT APPLICATION
B	20/7/21	FOR DEVELOPMENT APPLICATION
C	1/9/21	FOR DEVELOPMENT APPLICATION
D	24/9/21	FOR DEVELOPMENT APPLICATION
F	24/3/22	FOR DEVELOPMENT APPLICATION

REV DATE ISSUE

PROJECT

Watermark Freshwater - Building E Awnings  
80 Evans Street, Freshwater NSW 2096

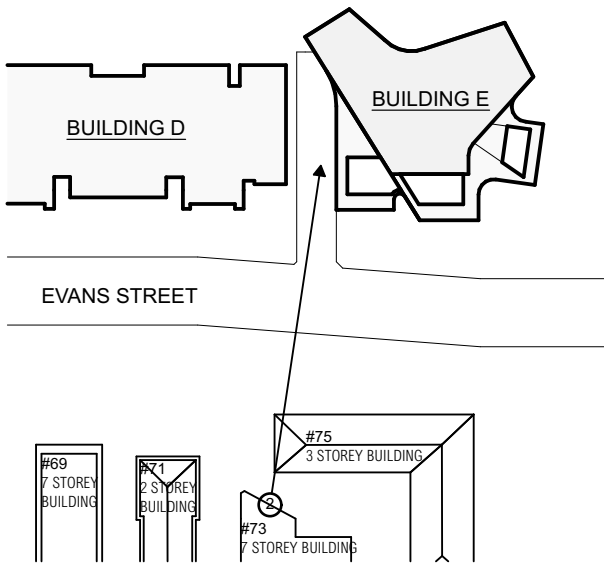
PROJECT NUMBER	PLOT DATE	DRAWN	CHECKED	SHEET SCALE	SHEET SIZE	NORTH
1354	24/3/22	CL	FR	NTS	A3	

SHEET TITLE

BUILDING E - VIEW ANALYSIS

SHEET NUMBER	REVISION
A-DA06	F





1  
-  
EXISTING VIEW 2  
VIEW FROM 73 EVANS STREET  
(LEVEL 7 - BALCONY - RL40,000)



2  
-  
PROPOSED VIEW 2  
VIEW FROM 73 EVANS STREET  
(LEVEL 7 - BALCONY - RL40,000)

FOR DEVELOPMENT APPLICATION

ARCHITECT

**CHROFI**

3/1 THE CORSO MANLY NSW 2095 AUSTRALIA  
T +61 2 8096 8500 E info@chrofi.com  
CHOI ROPHA FIGHERA P/L ACN 144 714 885 ATF CHOI ROPHA FIGHERA UNIT TRUST T/A CHROFI ABN 22 365 257 187 NOMINATED ARCHITECT JOHN CHOI 8706 TAI ROPHA 6566 STEVEN FIGHERA 6609  
THIS DRAWING SHOULD BE READ IN CONJUNCTION WITH ALL RELEVANT CONTRACTS, SPECIFICATION, REPORT AND DRAWINGS. DO NOT SCALE DRAWINGS. DIMENSIONS GOVERN. VERIFY ALL DIMENSIONS ON SITE BEFORE CONSTRUCTION. COPYRIGHT OF THIS DRAWING IS VESTED IN CHROFI.

REV	DATE	ISSUE
A	17/6/21	FOR DEVELOPMENT APPLICATION
B	20/7/21	FOR DEVELOPMENT APPLICATION
C	1/9/21	FOR DEVELOPMENT APPLICATION
D	24/9/21	FOR DEVELOPMENT APPLICATION
F	24/3/22	FOR DEVELOPMENT APPLICATION

REV DATE ISSUE

PROJECT

Watermark Freshwater - Building E Awnings  
80 Evans Street, Freshwater NSW 2096

PROJECT NUMBER	PLOT DATE	DRAWN	CHECKED	SHEET SCALE	SHEET SIZE
1354	24/3/22	CL	FR	NTS	A3



SHEET TITLE

BUILDING E - VIEW ANALYSIS

SHEET NUMBER

A-DA07

REVISION

F





8.5M HEIGHT PLANE

1  
-

BLD E - 8.5M HEIGHT PLANE



2  
-

BLD E - 8.5M HEIGHT PLANE

FOR DEVELOPMENT APPLICATION

ARCHITECT

**CHROFI**

3/1 THE CORSO MANLY NSW 2095 AUSTRALIA  
T +61 2 8096 8500 E info@chrofi.com  
CHOI ROPHA FIGHERA P/L ACN 144 714 885 ATF CHOI ROPHA FIGHERA UNIT TRUST T/A CHROFI ABN 22 365 257 107 NOMINATED ARCHITECT JOHN CHOI 8706 TAI ROPHA 6566 STEVEN FIGHERA 6609  
THIS DRAWING SHOULD BE READ IN CONJUNCTION WITH ALL RELEVANT CONTRACTS, SPECIFICATION, REPORT AND DRAWINGS. DO NOT SCALE DRAWINGS. DIMENSIONS GOVERN. VERIFY ALL DIMENSIONS ON SITE BEFORE CONSTRUCTION. COPYRIGHT OF THIS DRAWING IS VESTED IN CHROFI.

REV	DATE	ISSUE
D	24/9/21	FOR DEVELOPMENT APPLICATION
F	24/3/22	FOR DEVELOPMENT APPLICATION

REV	DATE	ISSUE

PROJECT	
Watermark Freshwater - Building E Awnings	
80 Evans Street, Freshwater NSW 2096	
PROJECT NUMBER	PLOT DATE
1354	24/3/22

DRAWN	CHECKED	SHEET SCALE	SHEET SIZE
CL	FR	NTS	A3

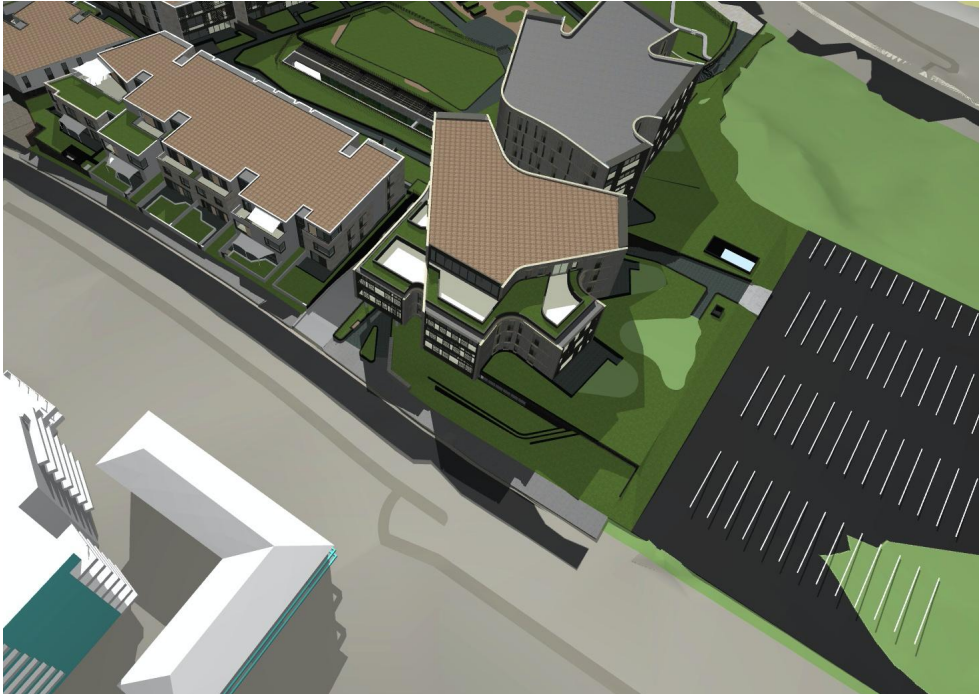


SHEET TITLE	
BUILDING E - 8.5M HEIGHT PLANE DIAGRAM	
SHEET NUMBER	REVISION
A-DA08	F

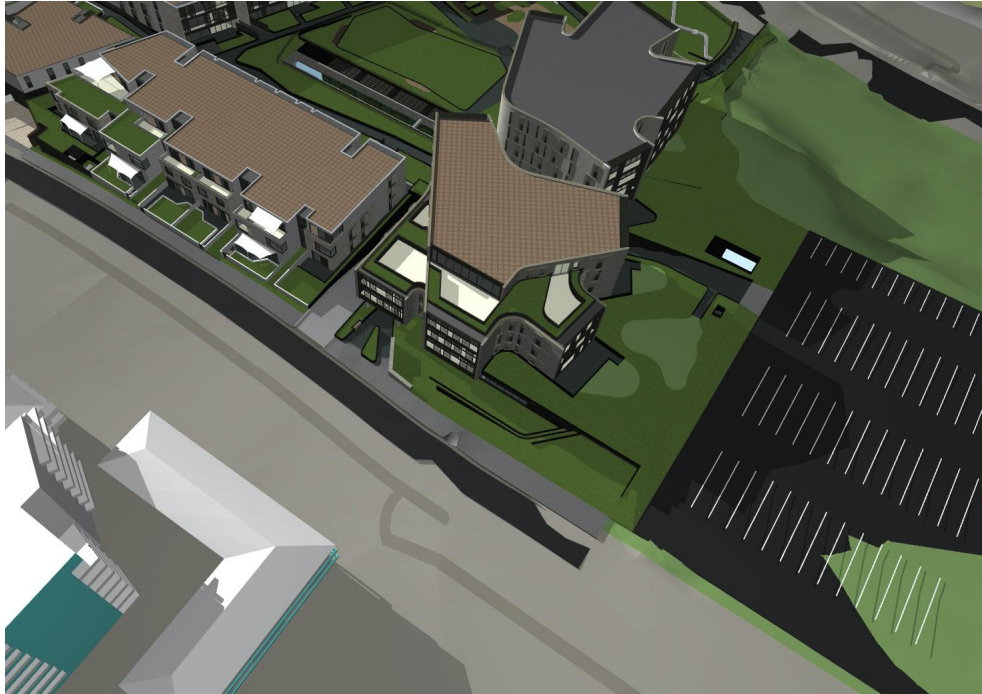




1 21 JUNE - 9AM - EXISTING



2 21 JUNE - 12PM - EXISTING



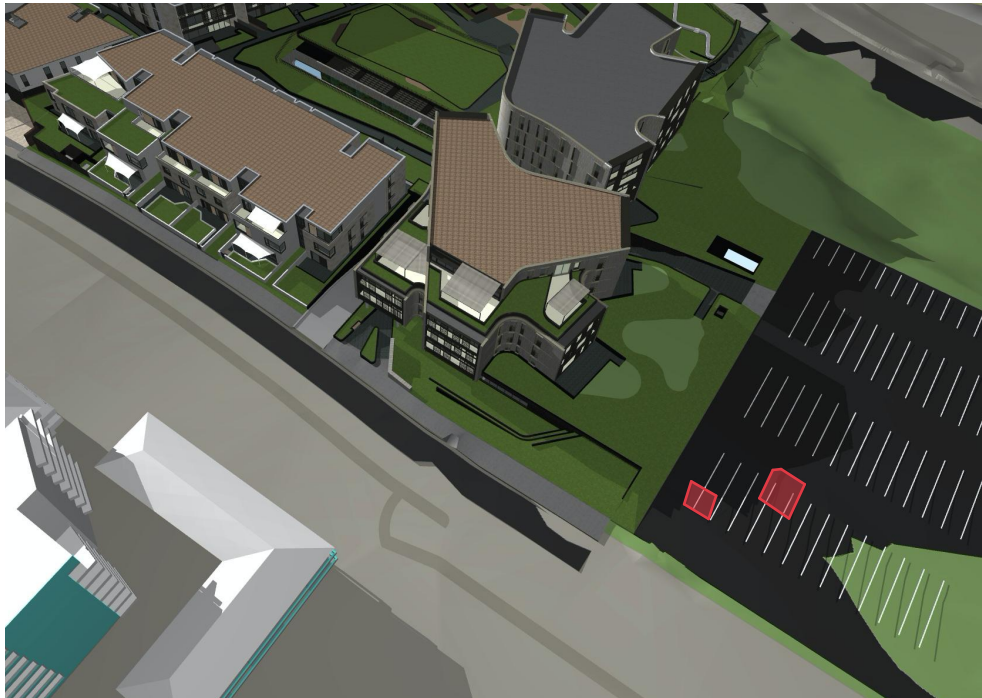
3 21 JUNE - 3PM - EXISTING



4 21 JUNE - 9AM - PROPOSED



5 21 JUNE - 12PM - PROPOSED



6 21 JUNE - 3PM - PROPOSED

ADDITIONAL SHADOW BY AWNINGS

**\*NOTE:**  
FULL EXTEND OF PROPOSED AWNINGS SHOW  
INCL. RETRACTABLE, TRANSLUCENT FABRIC

FOR DEVELOPMENT APPLICATION

ARCHITECT

CHROFI

3/1 THE CORSO MANLY NSW 2095 AUSTRALIA  
T +61 2 8096 8500 E info@chrofi.com  
CHOI ROPHA FIGHERA P/L ACN 144 714 885 ATF CHOI ROPHA FIGHERA UNIT TRUST T/A CHROFI ABN 22 365 257 107 NOMINATED ARCHITECT JOHN CHOI 0706 TAI ROPHA 6566 STEVEN FIGHERA 6609  
THIS DRAWING SHOULD BE READ IN CONJUNCTION WITH ALL RELEVANT CONTRACTS, SPECIFICATION, REPORT AND DRAWINGS. DO NOT SCALE DRAWINGS. DIMENSIONS GOVERN. VERIFY ALL DIMENSIONS ON SITE BEFORE CONSTRUCTION. COPYRIGHT OF THIS DRAWING IS VESTED IN CHROFI.

REV	DATE	ISSUE	REV	DATE	ISSUE
A	4/2/22	FOR DEVELOPMENT APPLICATION			
F	24/3/22	FOR DEVELOPMENT APPLICATION			

PROJECT

Watermark Freshwater - Building E Awnings  
80 Evans Street, Freshwater NSW 2096

PROJECT NUMBER	PLOT DATE	DRAWN	CHECKED	SHEET SCALE	SHEET SIZE	NORTH
1354	24/3/22	CL	FR	NTS	A3	

SHEET TITLE

SHADOW ANALYSIS

SHEET NUMBER	REVISION
A-DA09	F