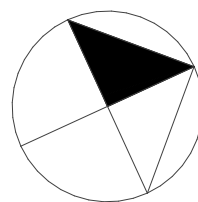


SCHEDULE OF AMENDMENTS:

- Entry and exit ramp combined and relocated.
- Traffic flow, car spaces and storage cages rearranged.
- Floor RL lowered.
- EOT and accessible bathroom relocated.
- Fire stairs relocated to comply with NCC.
- Plant and utility rooms rearranged.
- Loading dock entry/exit ramp modified.
- Accessible bathroom provided
- Glenrose pl pedestrian entry ramp and steps modified.
- Levels modified.
- Entry to shop number 07 modified.
- Mechanical exhaust shafts located.
- Loading dock RL modified.
- Face brick removed from intermediate exposed slab edges.
- Proposed clubhouse/communal room.
- Fire stairs relocated and minor internal unit rearranged adjacent to the new stair location.
- Glen street pedestrian entry modified for structural rationalisation.
- Electrical switch boards located.
- External wall modified.
- Unit 1.01: East wall relocated, balcony deleted.
- Waste lift is changed to Retail lift and it drops to basement 04.
- The hoist lift in the loading dock is changed to waste lift and it drops to basement 03.
- Roof extended over enclosed balcony.
- Internal layouts modified for more efficient, spatial use and relationship:
LG01, LG02, LG06, LG10, LG12, LG14, LG15, LG18.
G01, G02, G05, G09, G13, G15, G16.
L1.02, L1.05, L1.08, L1.12, L1.13, L1.14
The amendments for the following units are subject to section 4.55 application:
LG03, LG05, LG07, LG08, LG09, LG11, LG13, LG17, G03, G06, G08, G10, G11, G12, G14, L1.01, L1.03, L1.04, L1.09, L1.11.
- New aluminum windows and doors.



SCHEDULE OF AMENDMENTS:

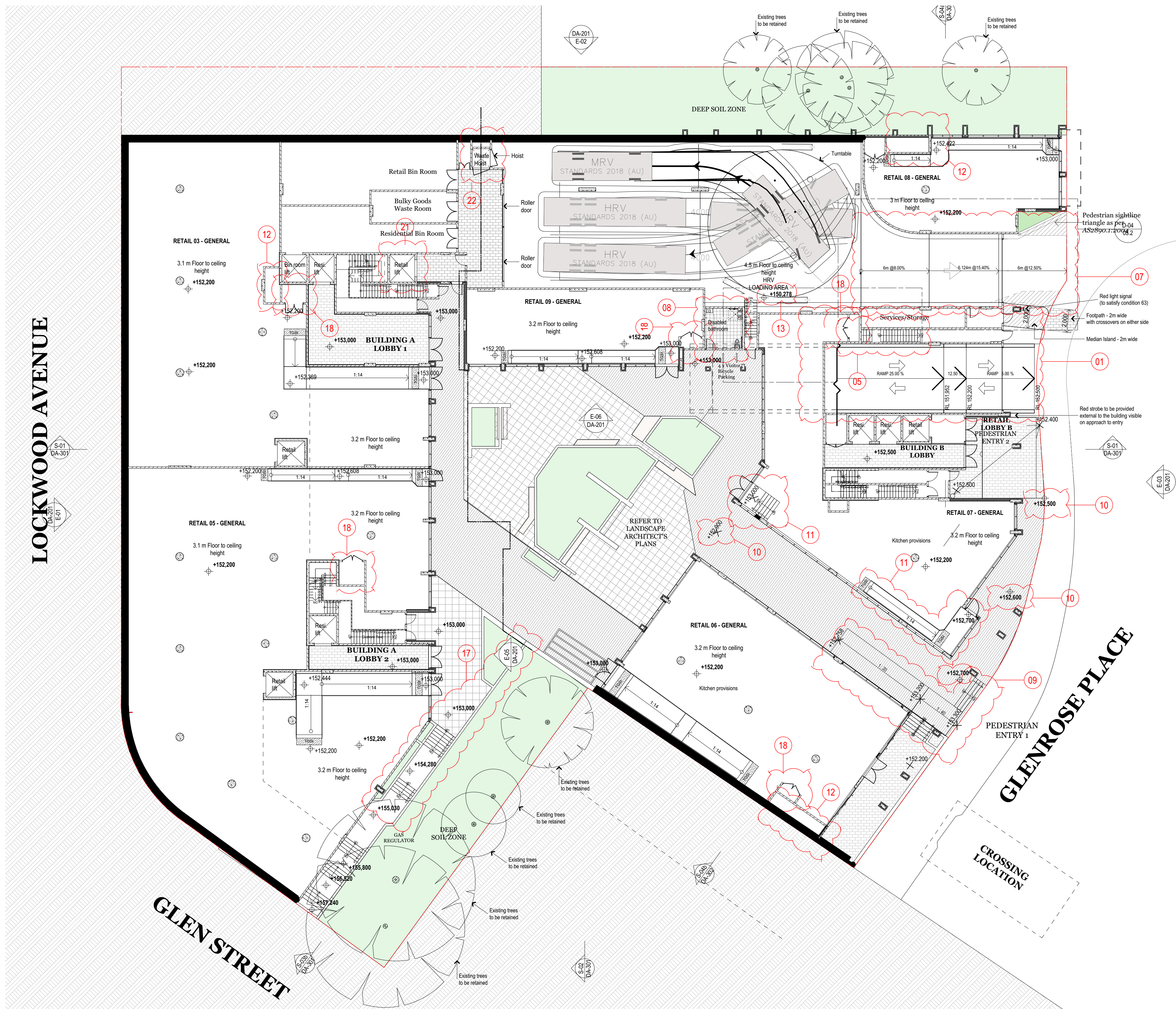
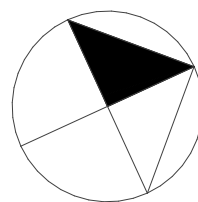
- 1- Entry and exit ramp combined and relocated.
- 2- Traffic flow, car spaces and storage cages rearranged.
- 3- Floor RL lowered.
- 4- EOT and accessible bathroom relocated.
- 5- Fire stairs relocated to comply with NCC.
- 6- Plant and utility rooms rearranged.
- 7- Loading dock entry/exit ramp modified.
- 8- Accessible bathroom provided
- 9- Glenrose pl pedestrian entry ramp and steps modified.
- 10- levels modified.
- 11- Entry to shop number 07 modified.
- 12- Mechanical exhaust shafts located.
- 13- Loading dock RL modified.
- 14- Face brick removed from intermediate exposed slab edges.
- 15- Proposed clubhouse/communal room.
- 16- Fire stairs relocated and minor internal unit rearranged adjacent to the new stair location.
- 17- Glen street pedestrian entry modified for structural rationalisation.
- 18- Electrical switch boards located.
- 19- External wall modified.
- 20- Unit 1.01: East wall relocated, balcony deleted.
- 21- Waste lift is changed to Retail lift and it drops to basement 04.
- 22- The hoist lift in the loading dock is changed to waste lift and it drops to basement 03.
- 23- Roof extended over enclosed balcony.
- 24- Internal layouts modified for more efficient, spatial use and relationship:
LG01, LG02, LG06, LG10, LG12, LG14, LG15, LG18.
G01, G02, G05, G09, G13, G15, G16.
L1.02, L1.05, L1.08, L1.12, L1.13, L1.14
The amendments for the following units are subject to section 4.55 application:
LG03, LG05, LG07, LG08, LG09, LG11, LG13, LG17, G03, G06, G08, G10, G11, G12, G14, L1.01, L1.03, L1.04, L1.09, L1.11.
- 25- New aluminum windows and doors.

Retail Staff

Commercial car space

Residential visitor

Residential



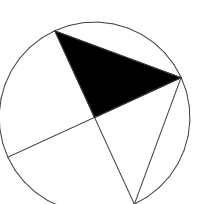
SCHEDULE OF AMENDMENTS:

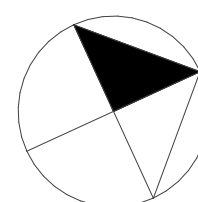
- 1- Entry and exit ramp combined and relocated.
- 2- Traffic flow, car spaces and storage cages rearranged.
- 3- Floor RL lowered.
- 4- EOT and accessible bathroom relocated.
- 5- Fire stairs relocated to comply with NCC.
- 6- Plant and utility rooms rearranged.
- 7- Loading dock entry/exit ramp modified.
- 8- Accessible bathroom provided
- 9- Glenrose pl pedestrian entry ramp and steps modified.
- 10- levels modified.
- 11- Entry to shop number 07 modified.
- 12- Mechanical exhaust shafts located.
- 13- Loading dock RL modified.
- 14- Face brick removed from intermediate exposed slab edges.
- 15- Proposed clubhouse/communal room.
- 16- Fire stairs relocated and minor internal unit rearranged adjacent to the new stair location.
- 17- Glen street pedestrian entry modified for structural rationalisation.
- 18- Electrical switch boards located.
- 19- External wall modified.
- 20- Unit 1.01: East wall relocated, balcony deleted.
- 21- Waste lift is changed to Retail lift and it drops to basement 04.
- 22- The hoist lift in the loading dock is changed to waste lift and it drops to basement 03.
- 23- Roof extended over enclosed balcony.
- 24- Internal layouts modified for more efficient, spatial use and relationship:
LG01, LG02, LG06, LG10, LG12, LG14, LG15, LG18.
G01, G02, G05, G09, G13, G15, G16.
L1.02, L1.05, L1.08, L1.12, L1.13, L1.14
The amendments for the following units are subject to section 4.55 application:
LG03, LG05, LG07, LG08, LG09, LG11, LG13, LG17, G03, G06, G08, G10, G11, G12, G14, L1.01, L1.03, L1.04, L1.09, L1.11.
- 25- New aluminum windows and doors.



SCHEDULE OF AMENDMENTS:

- 1- Entry and exit ramp combined and relocated.
- 2- Traffic flow, car spaces and storage cages rearranged.
- 3- Floor RL lowered.
- 4- EOT and accessible bathroom relocated.
- 5- Fire stairs relocated to comply with NCC.
- 6- Plant and utility rooms rearranged.
- 7- Loading dock entry/exit ramp modified.
- 8- Accessible bathroom provided
- 9- Glenrose pedestrian entry ramp and steps modified.
- 10- levels modified.
- 11- Entry to shop number 07 modified.
- 12- Mechanical exhaust shafts located.
- 13- Loading dock RL modified.
- 14- Face brick removed from intermediate exposed slab edges.
- 15- Proposed clubhouse/communal room.
- 16- Fire stairs relocated and minor internal unit rearranged adjacent to the new stair location.
- 17- Glen street pedestrian entry modified for structural rationalisation.
- 18- Electrical switch boards located.
- 19- External wall modified.
- 20- Unit 1.01: East wall relocated, balcony deleted.
- 21- Waste lift is changed to Retail lift and it drops to basement 04.
- 22- The hoist lift in the loading dock is changed to waste lift and it drops to basement 03.
- 23- Roof extended over enclosed balcony.
- 24- Internal layouts modified for more efficient, spatial use and relationship:
LG01, LG02, LG06, LG10, LG12, LG14, LG15, LG18.
G01, G02, G05, G09, G13, G15, G16.
L1.02, L1.05, L1.08, L1.12, L1.13, L1.14
The amendments for the following units are subject to section 4.55 application:
LG03, LG05, LG07, LG08, LG09, LG11, LG13, LG17, G03, G06, G08, G10, G11, G12, G14, L1.01, L1.03, L1.04, L1.09, L1.11.
- 25- New aluminum windows and doors.

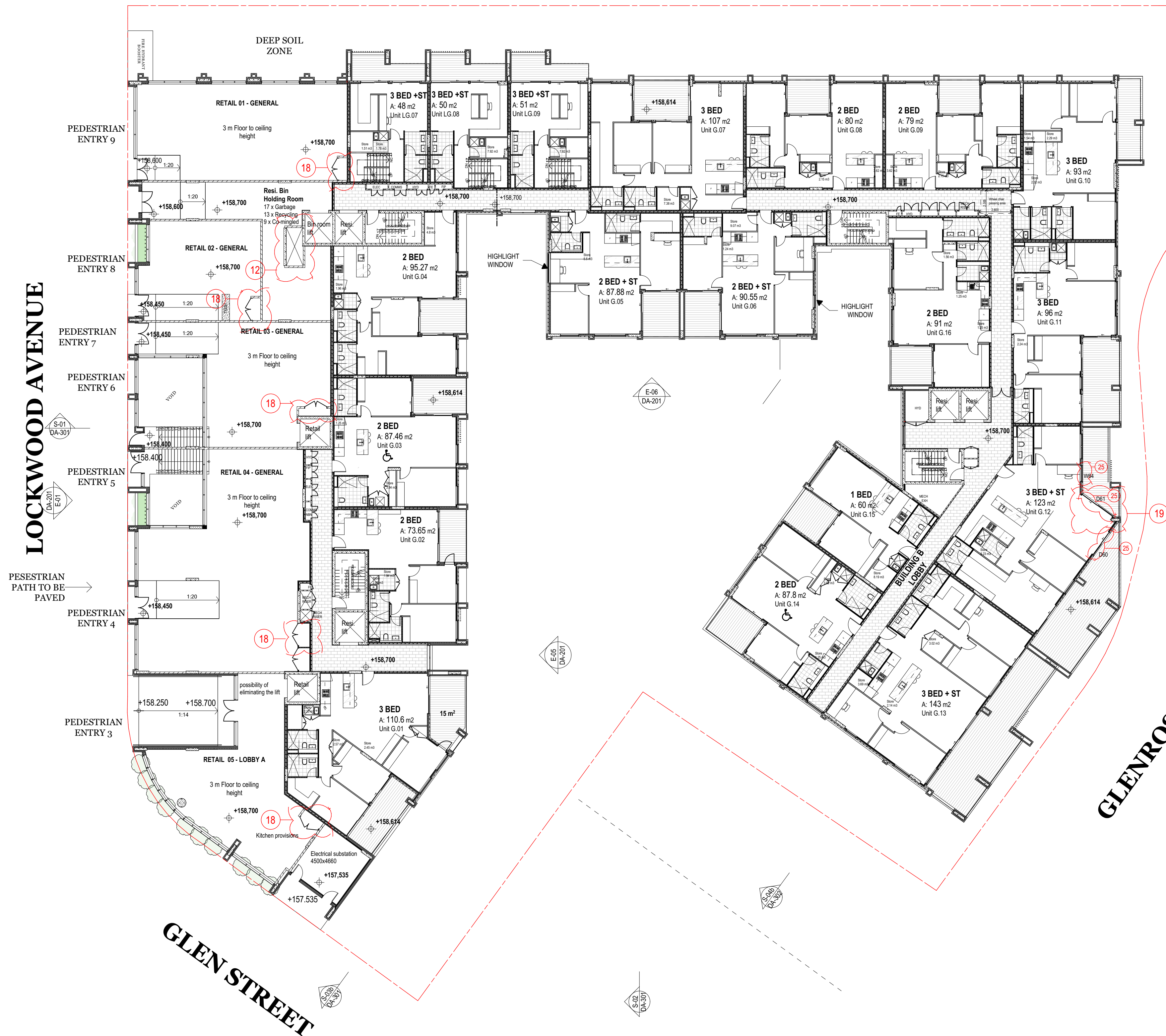




LOCKWOOD AVENUE

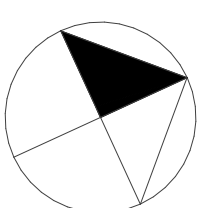
GLENROSE PLACE

GLEN STREET



SCHEDULE OF AMENDMENTS:

- 1- Entry and exit ramp combined and relocated.
- 2- Traffic flow, car spaces and storage cages rearranged.
- 3- Floor RL lowered.
- 4- EOT and accessible bathroom relocated.
- 5- Fire stairs relocated to comply with NCC.
- 6- Plant and utility rooms rearranged.
- 7- Loading dock entry/exit ramp modified.
- 8- Accessible bathroom provided
- 9- Glenrose pl pedestrian entry ramp and steps modified.
- 10- levels modified.
- 11- Entry to shop number 07 modified.
- 12- Mechanical exhaust shafts located.
- 13- Loading dock RL modified.
- 14- Face brick removed from intermediate exposed slab edges.
- 15- Proposed clubhouse/communal room.
- 16- Fire stairs relocated and minor internal unit rearranged adjacent to the new stair location.
- 17- Glen street pedestrian entry modified for structural rationalisation.
- 18- Electrical switch boards located.
- 19- External wall modified.
- 20- Unit 1.01: East wall relocated, balcony deleted.
- 21- Waste lift is changed to Retail lift and it drops to basement 04.
- 22- The hoist lift in the loading dock is changed to waste lift and it drops to basement 03.
- 23- Roof extended over enclosed balcony.
- 24- Internal layouts modified for more efficient, spatial use and relationship:
LG01, LG02, LG06, LG10, LG12, LG14, LG15, LG18.
G01, G02, G05, G09, G13, G15, G16.
L1.02, L1.05, L1.08, L1.12, L1.13, L1.14
The amendments for the following units are subject to section 4.55 application:
LG03, LG05, LG07, LG08, LG09, LG11, LG13, LG17, G03, G06, G08, G10, G11, G12, G14, L1.01, L1.03, L1.04, L1.09, L1.11.
- 25- New aluminum windows and doors.



LOCKWOOD AVENUE

GLENROSE PLACE

GLEN STREET

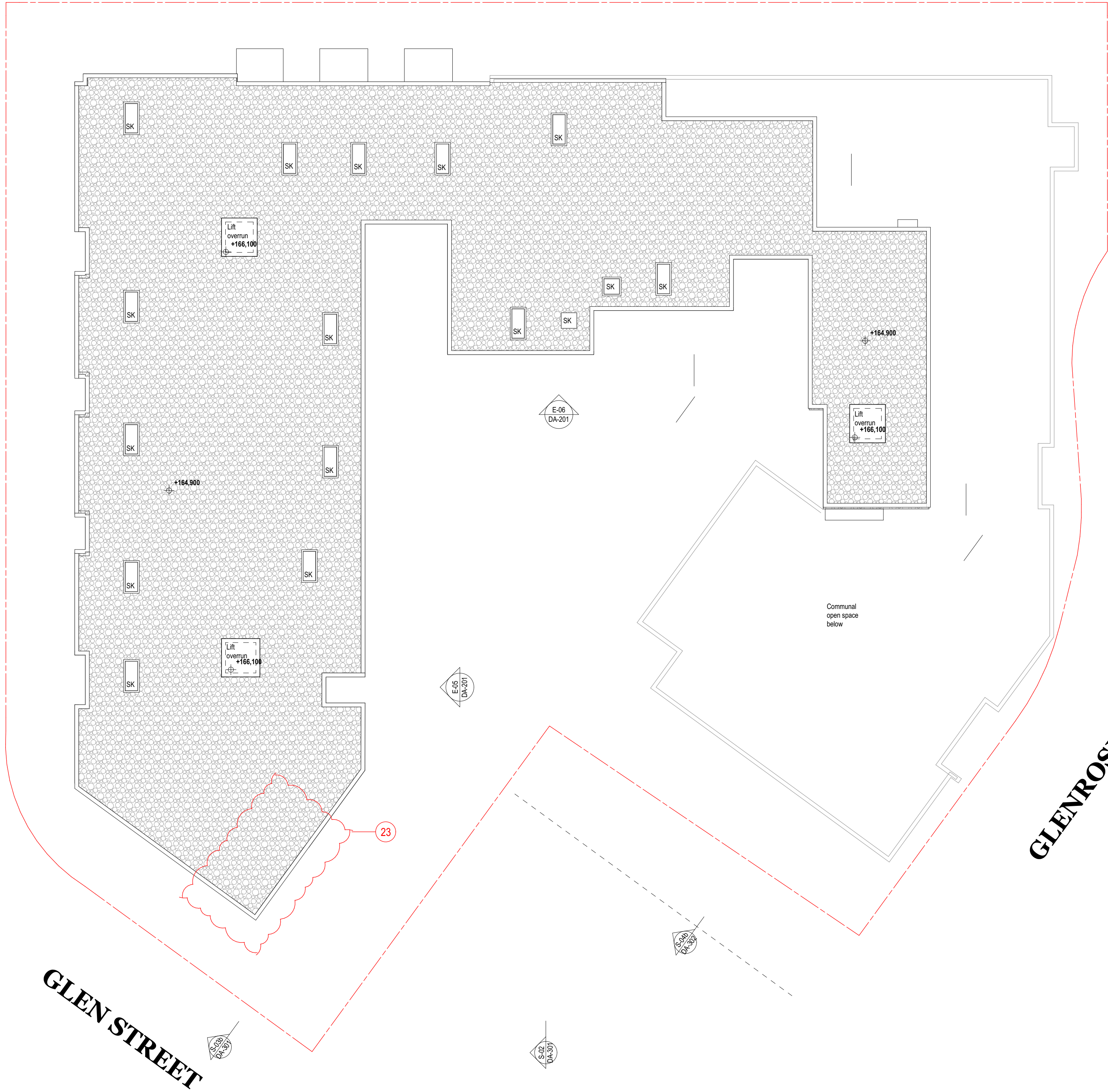
Retail
awning
below



SCHEDULE OF AMENDMENTS:

- 1- Entry and exit ramp combined and relocated.
- 2- Traffic flow, car spaces and storage cages rearranged.
- 3- Floor RL lowered.
- 4- EOT and accessible bathroom relocated.
- 5- Fire stairs relocated to comply with NCC.
- 6- Plant and utility rooms rearranged.
- 7- Loading dock entry/exit ramp modified.
- 8- Accessible bathroom provided
- 9- Glenrose pl pedestrian entry ramp and steps modified.
- 10- levels modified.
- 11- Entry to shop number 07 modified.
- 12- Mechanical exhaust shafts located.
- 13- Loading dock RL modified.
- 14- Face brick removed from intermediate exposed slab edges.
- 15- Proposed clubhouse/communal room.
- 16- Fire stairs relocated and minor internal unit rearranged adjacent to the new stair location.
- 17- Glen street pedestrian entry modified for structural rationalisation.
- 18- Electrical switch boards located.
- 19- External wall modified.
- 20- Unit 1.01: East wall relocated, balcony deleted.
- 21- Waste lift is changed to Retail lift and it drops to basement 04.
- 22- The hoist lift in the loading dock is changed to waste lift and it drops to basement 03.
- 23- Roof extended over enclosed balcony.
- 24- Internal layouts modified for more efficient, spatial use and relationship:
LG01, LG02, LG06, LG10, LG12, LG14, LG15, LG18.
G01, G02, G05, G09, G13, G15, G16.
L1.02, L1.05, L1.08, L1.12, L1.13, L1.14
The amendments for the following units are subject to section 4.55 application:
LG03, LG05, LG07, LG08, LG09, LG11, LG13, LG17, G03, G06, G08, G10, G11, G12, G14, L1.01, L1.03, L1.04, L1.09, L1.11.
- 25- New aluminum windows and doors.

LOCKWOOD AVENUE



GLENROSE PLACE

GLEN STREET

SCHEDULE OF AMENDMENTS:

- 1- Entry and exit ramp combined and relocated.
- 2- Traffic flow, car spaces and storage cages rearranged.
- 3- Floor RL lowered.
- 4- EOT and accessible bathroom relocated.
- 5- Fire stairs relocated to comply with NCC.
- 6- Plant and utility rooms rearranged.
- 7- Loading dock entry/exit ramp modified.
- 8- Accessible bathroom provided
- 9- Glenrose pl pedestrian entry ramp and steps modified.
- 10- levels modified.
- 11- Entry to shop number 07 modified.
- 12- Mechanical exhaust shafts located.
- 13- Loading dock RL modified.
- 14- Face brick removed from intermediate exposed slab edges.
- 15- Proposed clubhouse/communal room.
- 16- Fire stairs relocated and minor internal unit rearranged adjacent to the new stair location.
- 17- Glen street pedestrian entry modified for structural rationalisation.
- 18- Electrical switch boards located.
- 19- External wall modified.
- 20- Unit 1.01: East wall relocated, balcony deleted.
- 21- Waste lift is changed to Retail lift and it drops to basement 04.
- 22- The hoist lift in the loading dock is changed to waste lift and it drops to basement 03.
- 23- Roof extended over enclosed balcony.
- 24- Internal layouts modified for more efficient, spatial use and relationship:
LG01, LG02, LG06, LG10, LG12, LG14, LG15, LG18.
G01, G02, G05, G09, G13, G15, G16.
L1.02, L1.05, L1.08, L1.12, L1.13, L1.14
The amendments for the following units are subject to section 4.55 application:
LG03, LG05, LG07, LG08, LG09, LG11, LG13, LG17, G03, G06, G08, G10, G11, G12, G14, L1.01, L1.03, L1.04, L1.09, L1.11.
- 25- New aluminum windows and doors.

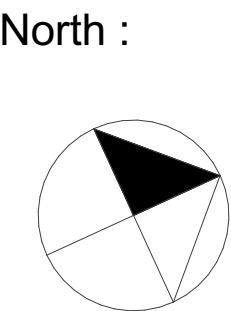
Issue	Date	Event
A	04.08.22	Issue for Section 4.55

Scale : 1:200 @A1 Sheet Size
Date : 04.08.22
Drawn By : J. S
Checked By : N.L
Drawing No. DA-107






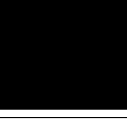




Project
28 Lockwood Avenue, Belrose

Drawing Title :

Roof plan

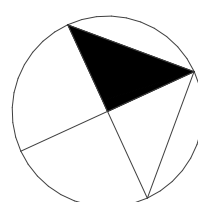
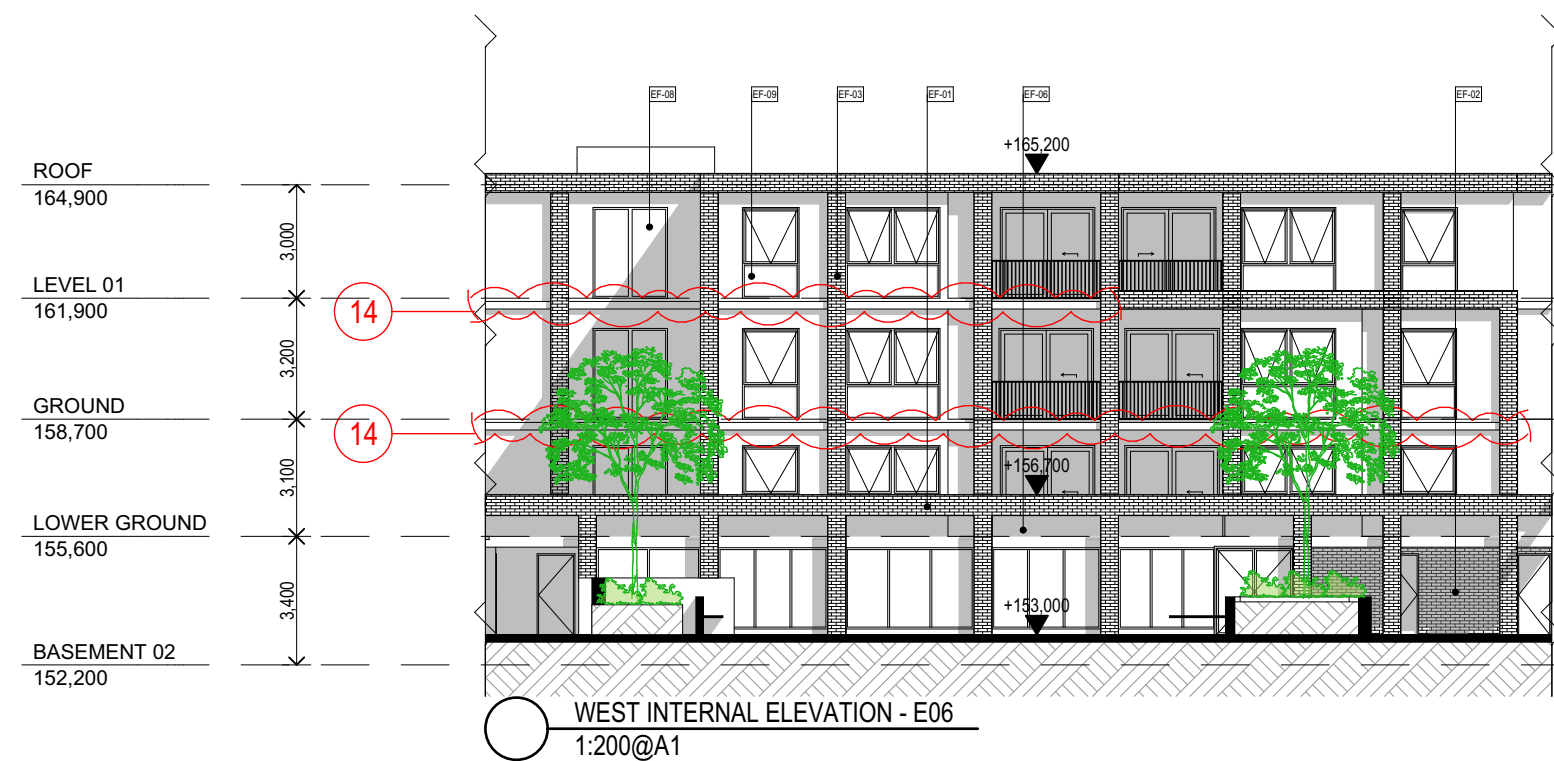
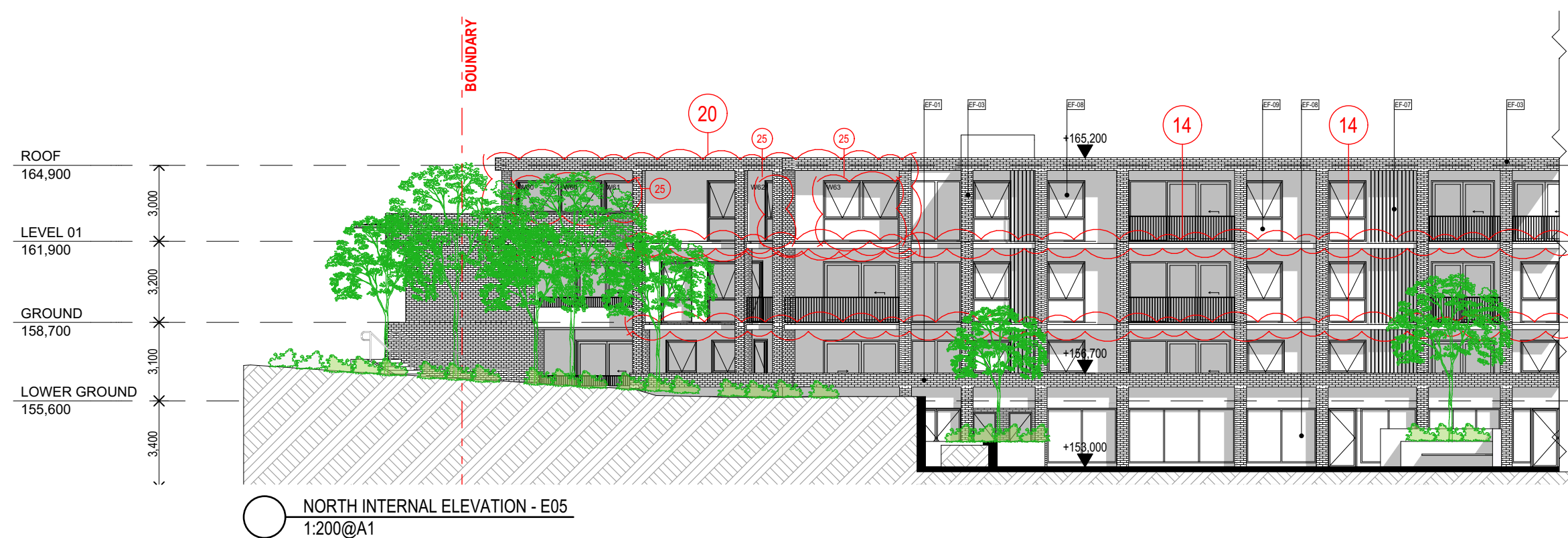
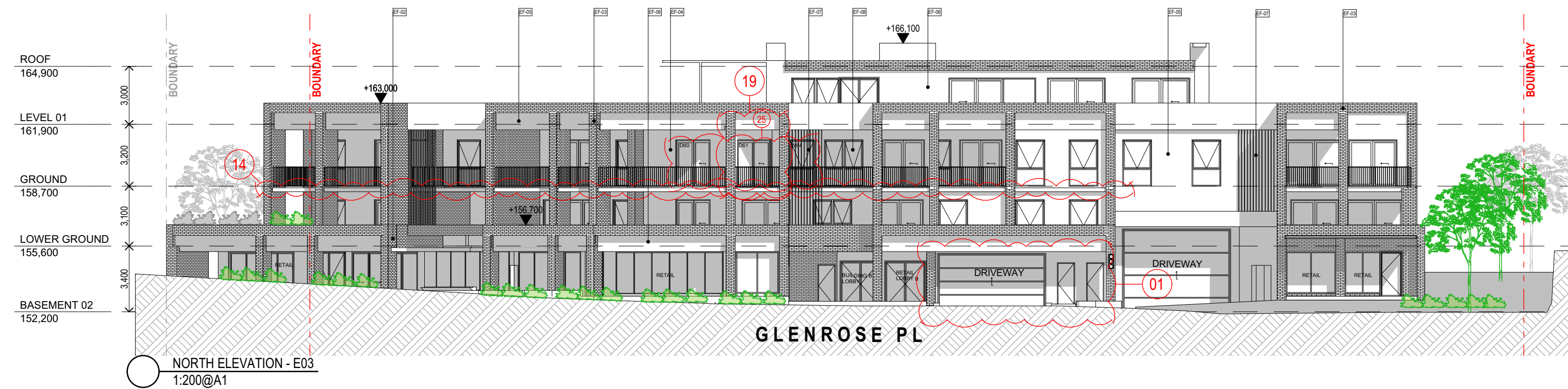




LEGEND:			
	EF-01 Finish: Face Brick Product: Boral Brick Colour: Amber Glow - Light Natural		EF-05 Finish: Painted Concrete Product: Pre-Cast Concrete Colour: Delux Ticking - Dark Grey
	EF-02 Finish: Face Brick Product: Boral Brick Colour: Copper Pearl - Aged Natural		EF-06 Finish: Painted Concrete Product: Pre-Cast Concrete Colour: Delux Leadman - Dark Grey
	EF-03 Finish: Face Brick Product: Boral Brick Colour: Contempo Madrid Blanco - White		EF-07 Finish: Painted Metal Product: Metal Colour: Delux Black
	EF-04 Finish: Painted Concrete Product: Pre-Cast Concrete Colour: Delux Guild Grey		EF-08 Finish: Glass Product: Glass Colour: Clear
			EF-09 Finish: Glass Product: Glass Colour: Grey
			EF-10 Finish: Glass Product: Glass Colour: Dark Grey

SCHEDULE OF AMENDMENTS:

- Entry and exit ramp combined and relocated.
- Traffic flow, car spaces and storage cages rearranged.
- Floor RL lowered.
- EOT and accessible bathroom relocated.
- Fire stairs relocated to comply with NCC.
- Plant and utility rooms rearranged.
- Loading dock entry/exit ramp modified.
- Accessible bathroom provided
- Glenrose pl pedestrian entry ramp and steps modified.
- Levels modified.
- Entry to shop number 07 modified.
- Mechanical exhaust shafts located.
- Loading dock RL modified.
- Face brick removed from intermediate exposed slab edges.
- Proposed clubhouse/communal room.
- Fire stairs relocated and minor internal unit rearranged adjacent to the new stair location.
- Glen street pedestrian entry modified for structural rationalisation.
- Electrical switch boards located.
- External wall modified.
- Unit 1.01: East wall relocated, balcony deleted.
- Waste lift is changed to Retail lift and it drops to basement 04.
- The hoist lift in the loading dock is changed to waste lift and it drops to basement 03.
- Roof extended over enclosed balcony.
- Internal layouts modified for more efficient, spatial use and relationship:
LG01, LG02, LG06, LG10, LG12, LG14, LG15, LG18.
G01, G02, G05, G09, G13, G15, G16.
L1.02, L1.05, L1.08, L1.12, L1.13, L1.14
The amendments for the following units are subject to section 4.55 application:
LG03, LG05, LG07, LG08, LG09, LG11, LG13, LG17, G03, G06, G08, G10, G11, G12, G14, L1.01, L1.03, L1.04, L1.09, L1.11.
- New aluminum windows and doors.



Check all dimensions and site conditions prior to commencement of any work, the purchase or ordering of any materials, fittings, plant, services or equipment and the preparation of shop drawings and/or the fabrication of any components.

Do not scale drawings - refer to figured dimensions only. Any discrepancies shall immediately be referred to the architect for clarification.

All drawings may not be reproduced or distributed without expressed permission from urbanacorp

Issue	Date	Event
A	04.08.22	Issue for Section 4.55

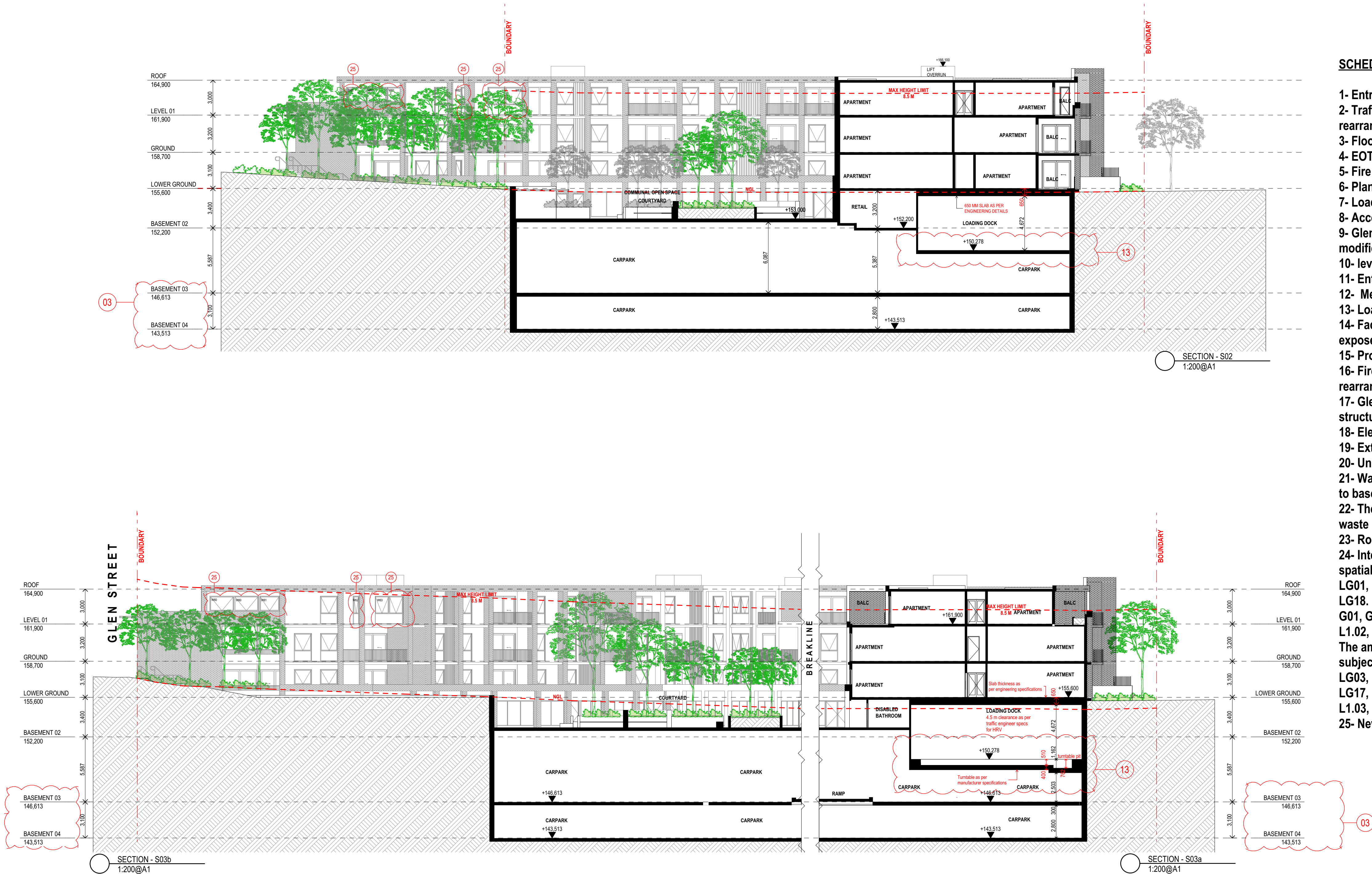
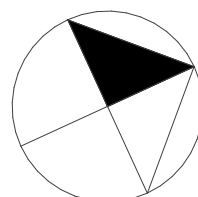
Scale :	1:200 @A1 Sheet Size
Date :	04.08.22
Drawn By :	J. S
Checked By :	N.L
Drawing No.	DA-301

Project
28 Lockwood Avenue, Belrose

Drawing Title :

SECTIONS

North :



SCHEDULE OF AMENDMENTS:

- 1- Entry and exit ramp combined and relocated.
- 2- Traffic flow, car spaces and storage cages rearranged.
- 3- Floor RL lowered.
- 4- EOT and accessible bathroom relocated.
- 5- Fire stairs relocated to comply with NCC.
- 6- Plant and utility rooms rearranged.
- 7- Loading dock entry/exit ramp modified.
- 8- Accessible bathroom provided
- 9- Glenrose pl pedestrian entry ramp and steps modified.
- 10- levels modified.
- 11- Entry to shop number 07 modified.
- 12- Mechanical exhaust shafts located.
- 13- Loading dock RL modified.
- 14- Face brick removed from intermediate exposed slab edges.
- 15- Proposed clubhouse/communal room.
- 16- Fire stairs relocated and minor internal unit rearranged adjacent to the new stair location.
- 17- Glen street pedestrian entry modified for structural rationalisation.
- 18- Electrical switch boards located.
- 19- External wall modified.
- 20- Unit 1.01: East wall relocated, balcony deleted.
- 21- Waste lift is changed to Retail lift and it drops to basement 04.
- 22- The hoist lift in the loading dock is changed to waste lift and it drops to basement 03.
- 23- Roof extended over enclosed balcony.
- 24- Internal layouts modified for more efficient, spatial use and relationship:
LG01, LG02, LG06, LG10, LG12, LG14, LG15, LG18.
G01, G02, G05, G09, G13, G15, G16.
L1.02, L1.05, L1.08, L1.12, L1.13, L1.14
The amendments for the following units are subject to section 4.55 application:
LG03, LG05, LG07, LG08, LG09, LG11, LG13, LG17, G03, G06, G08, G10, G11, G12, G14, L1.01, L1.03, L1.04, L1.09, L1.11.
- 25- New aluminum windows and doors.

ID	W60	W61	W62	W63	W64	W65	W66
Quantity	2	1	1	1	1	1	1
Height	1,300	1,300	2,400	2,400	2,400	1,300	1,300
Width	2,100	1,710	529	3,000	1,300	1,800	1,000
Window sill height	1,100	1,100	0	0	0	1,600	1,600
Window head height	2,400	2,400	2,400	2,400	2,400	2,900	2,900
2D Symbol							
View from Side Opposit...							
Description	Awning window	Awning window	Awning window	Double awning window	Awning window	sliding window	Fixed window

Door Schedule				
ID	D60	D61	D62	D63
Quantity	1	1	1	1
Height	2,400	2,400	2,400	2,400
Width	2,200	3,000	3,000	4,000
2D Plan Preview				

urbana corp

planning
design
project management

Reg Architect: N.Lycenko Reg. No 3010

Check all dimensions and site conditions prior to commencement of any work, the purchase or ordering of any materials, fittings, plant, services or equipment and the preparation of shop drawings and/or the fabrication of any components.

Do not scale drawings - refer to figured dimensions only. Any discrepancies shall immediately be referred to the architect for clarification.

All drawings may not be reproduced or distributed without expressed permission from urbanacorp

Issue	Date	Event
A	04.08.22	Issue for Section 4.55

Scale :	@A1 Sheet Size
Date :	04.08.22
Drawn By :	J. S
Checked By :	N.L
Drawing No.	DA-401

Project
28 Lockwood Avenue, Belrose

Drawing Title :

NEW WINDOWS AND
DOORS SCHEDULE

