

Brian Malligan

Regards

Firm details can be provided upon lodgement of the usual Section 73 Certificate application, details of the actual development and application fee via eDeveloper.

The part of Sector 3 that is below the sewer at MacPherson and Garden Streets would need to drain to the proposed Narrabeen Creek Carter. However, the construction of this carrier is 'on hold' until the 'buffer' area is sorted out. This issue is not expected to be completed in the short term. More than likely it will take 5 to 10 years. In the meantime, the lower part of the proposed development will have to pump to the sewer in MacPherson Street (or within the development) should it proceed.

The above section of sewer is a 375mm diameter GRP sewer (micro bore) and approximately 2.8 deep (this would need to be confirmed at work-as-constructed stage). Copies of the design plan and sections are enclosed for your information (design only). The sewer has been laid fairly deep and will probably drain some of your proposed development. Extensions would be required from this sewer to your development.

Sector 3 is near a sewer currently under construction at corner Garden and MacPherson Streets Warriewood. It is anticipated this sewer will be completed approximately early December 2004. Preliminary investigations have been carried out in respect of the provision of sewer within the area.

I refer to our recent telephone discussions and your letter and plan forwarded to Sydney Water on 24 September 2004.

RE : Sector 3- MacPherson Street Warriewood

This transmission is intended solely for the named addressee and may contain confidential or privileged information. The copying or distribution of it by anyone other than the addressee is strictly prohibited. If you have received this transmission in error please telephone us immediately. Sydney Water Corporation ABN 49 776 225 038.

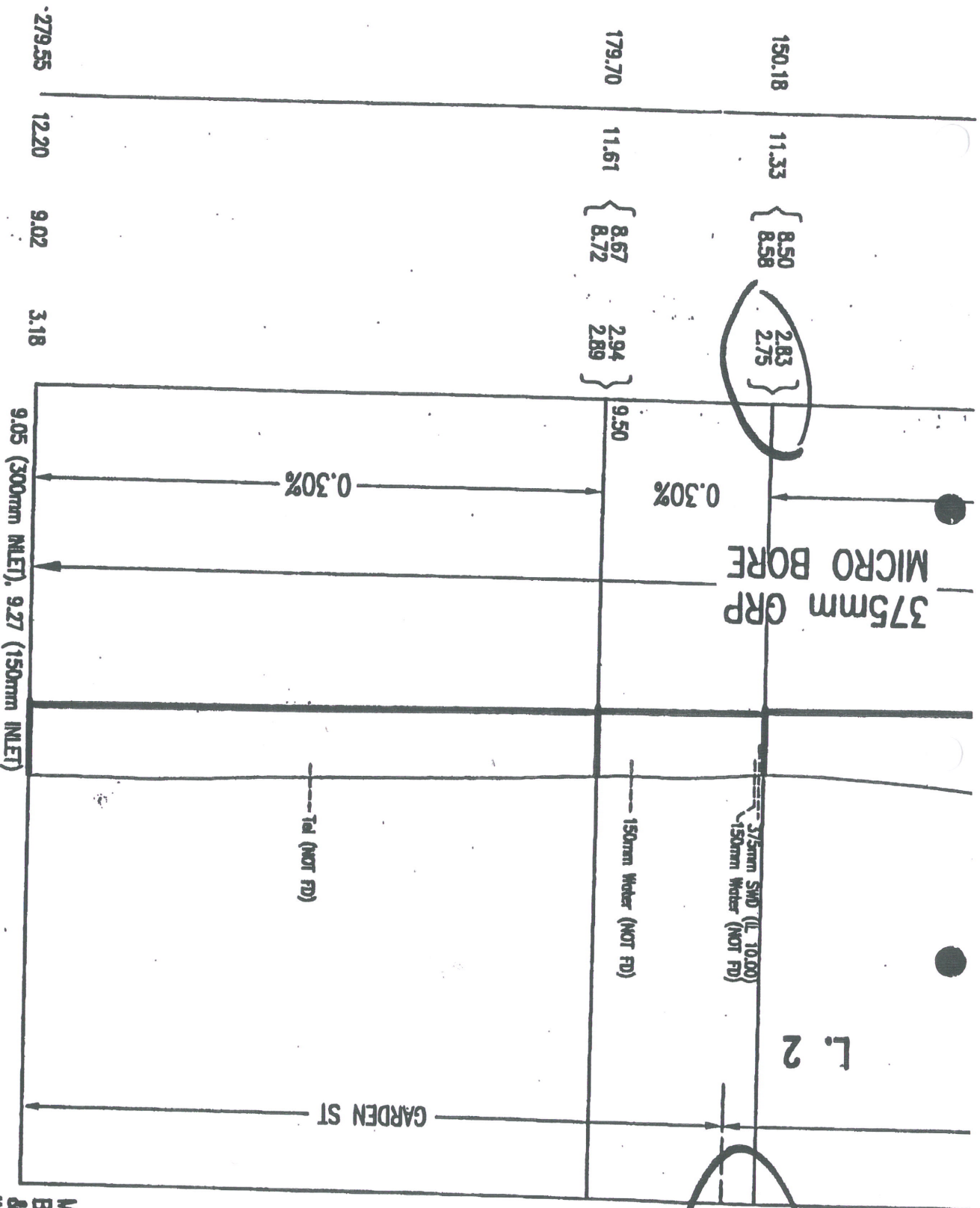
To	Richard Meaker	Facsimile 4628 1056
Company/Division	Lean & Hayward Pty Ltd	
From	Brian Malligan	Facsimile 9411 3730
Division	Development Services	
Location	Chatswood	
Telephone	9952 0588	
Total Pages	4	Date 11 October 2004

FACSIMILE









M.H. 13 WITH WATERTIGHT BOLT DOWN COVER

M.H. 14 WITH WATERTIGHT BOLT DOWN COVER & WATERSEALED 150mm INLET - L3

M.H. 15 WITH WATERTIGHT BOLT DOWN COVER & 300mm INLET & WATERSEALED 150mm INLET - L5

**DESIGN ONLY**  
**NOT W-A-C**

M.H. 14 WITH WATERTIGHT