

**DEVELOPMENT APPLICATION FOR PROPOSED AGED CARE FACILITY
23 + 33 BASSETT STREET, MONA VALE, NSW**



BASSETT STREET VIEW

AREAS	
SITE AREA	6503 m ²
G.F.A	6165 m² (0.95:1)
DEEP SOIL PLANTING	2275 m ² (35%)
LANDSCAPED AREA (by SEPP)	2784 m ² (43%) (24 m ² /BED)

PARKING REQUIREMENTS	
50 STAFF	25 SPACES
RESIDENTS 118 BEDS	11.8 SPACES
TOTAL	37 SPACES (39 PROPOSED)

DEVELOPMENT APPLICATION DRAWING LIST	
No:	Drawing Name
A-00	COVER SHEET
A-01	SITE ANALYSIS AND CONTEXT PLAN
A-02	ROOF PLAN
A-03	BASEMENT LEVEL
A-04	GROUND FLOOR LEVEL
A-05	FIRST FLOOR LEVEL
A-06	ELEVATIONS NORTH AND SOUTH
A-07	ELEVATIONS EAST AND WEST
A-08	SECTIONS
A-09	SHADOW DIAGRAMS
A-10	3D VIEWS
A-11	AREA CALCULATIONS

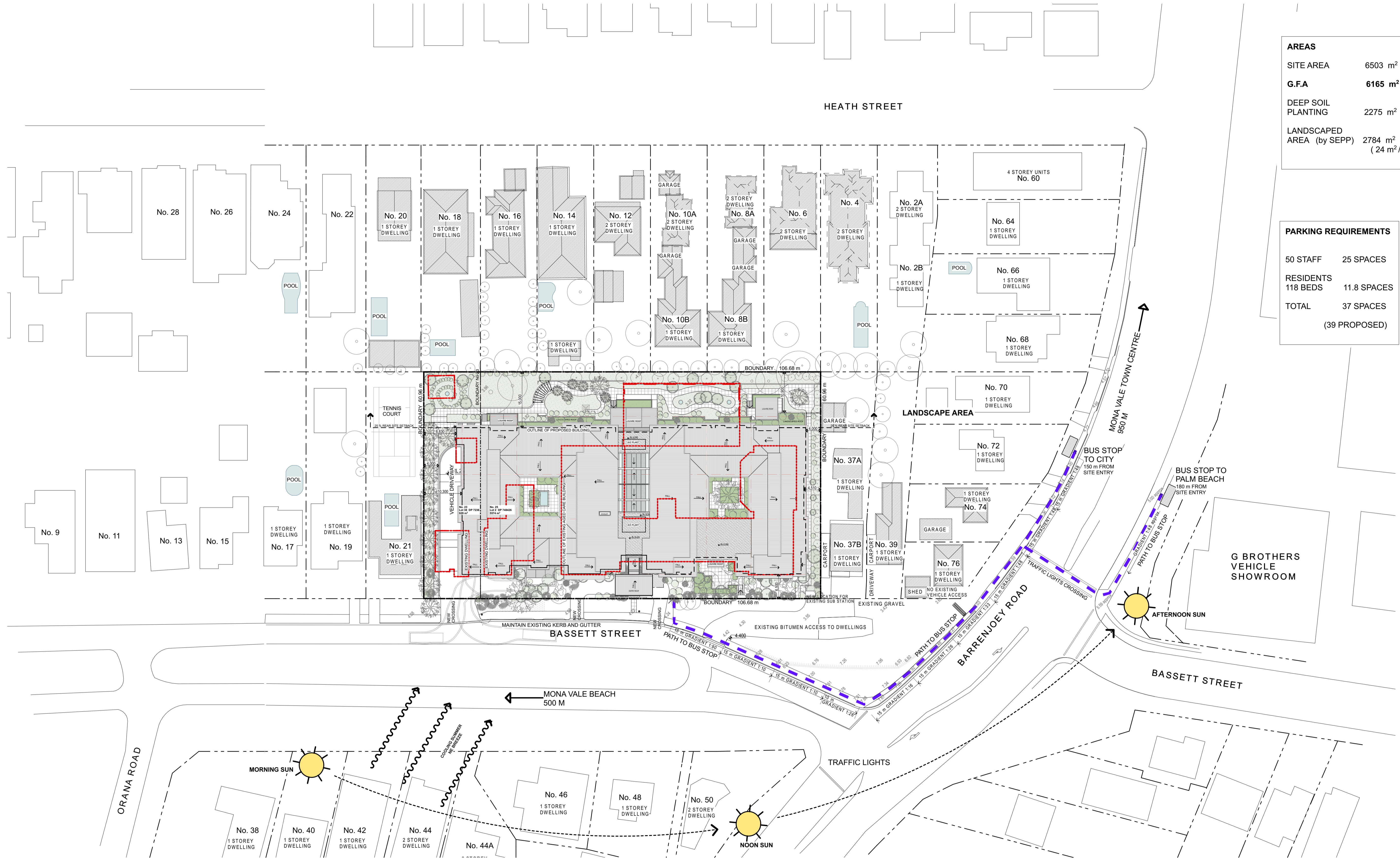


BASSETT STREET ENTRY



SITE OF PROPOSED AGED CARE FACILITY

LOCATION PLAN

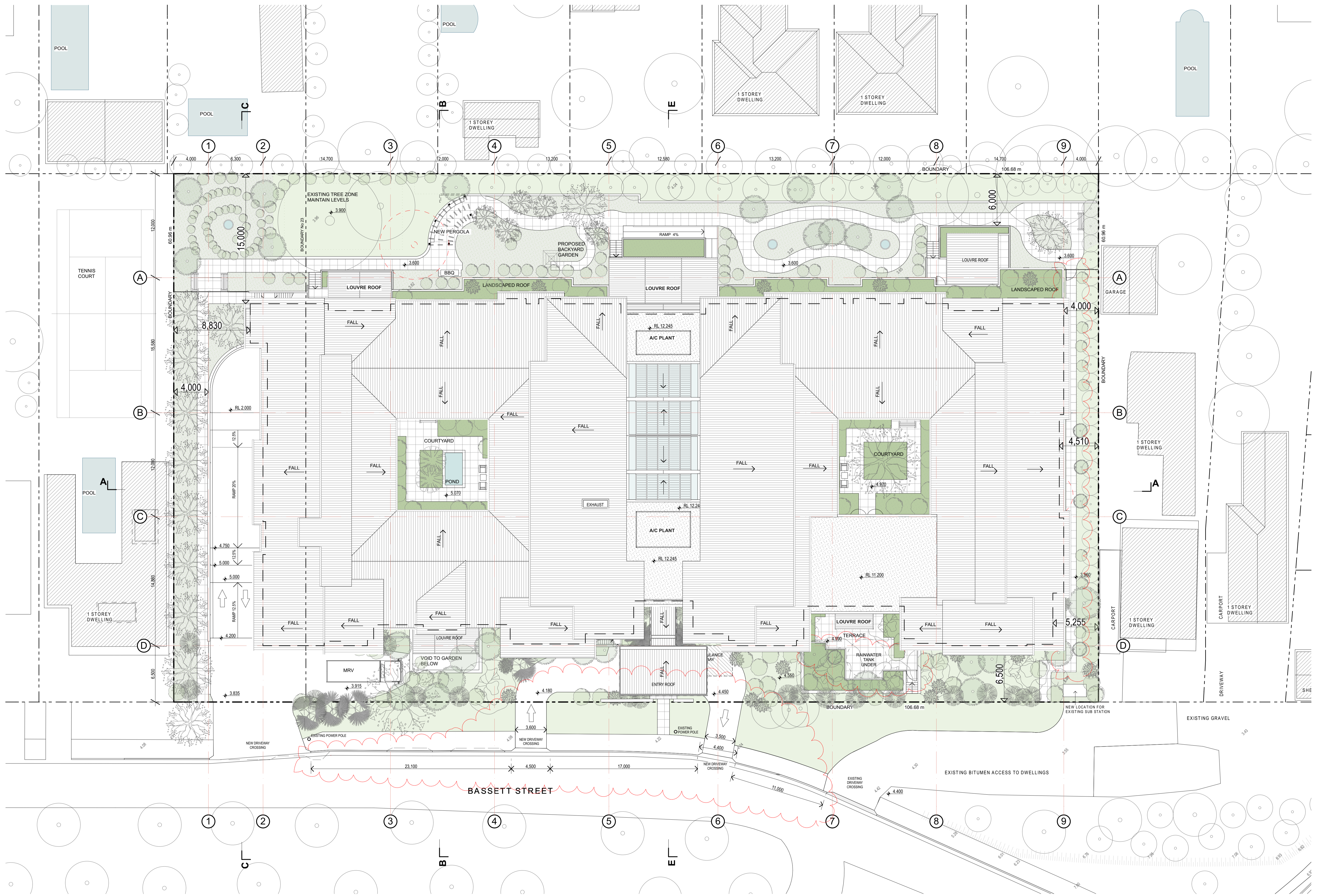


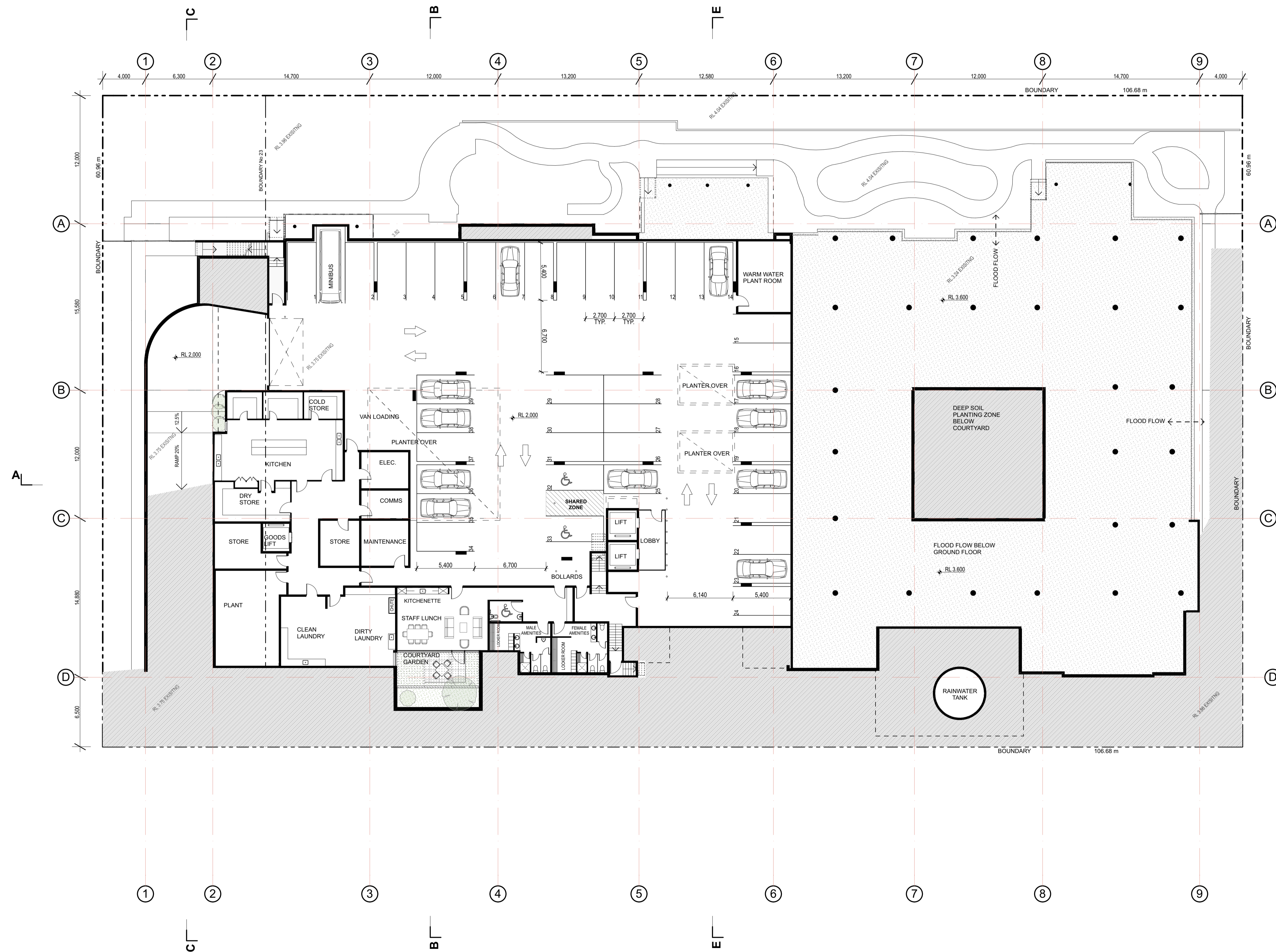
AREAS

SITE AREA	6503 m ²
G.F.A	6165 m ² (0.95:1)
DEEP SOIL PLANTING	2275 m ² (35%)
LANDSCAPED AREA (by SEPP)	2784 m ² (43%) (24 m ² /BED)

PARKING REQUIREMENTS

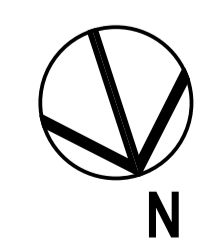
50 STAFF	25 SPACES
RESIDENTS	118 BEDS
TOTAL	37 SPACES (39 PROPOSED)

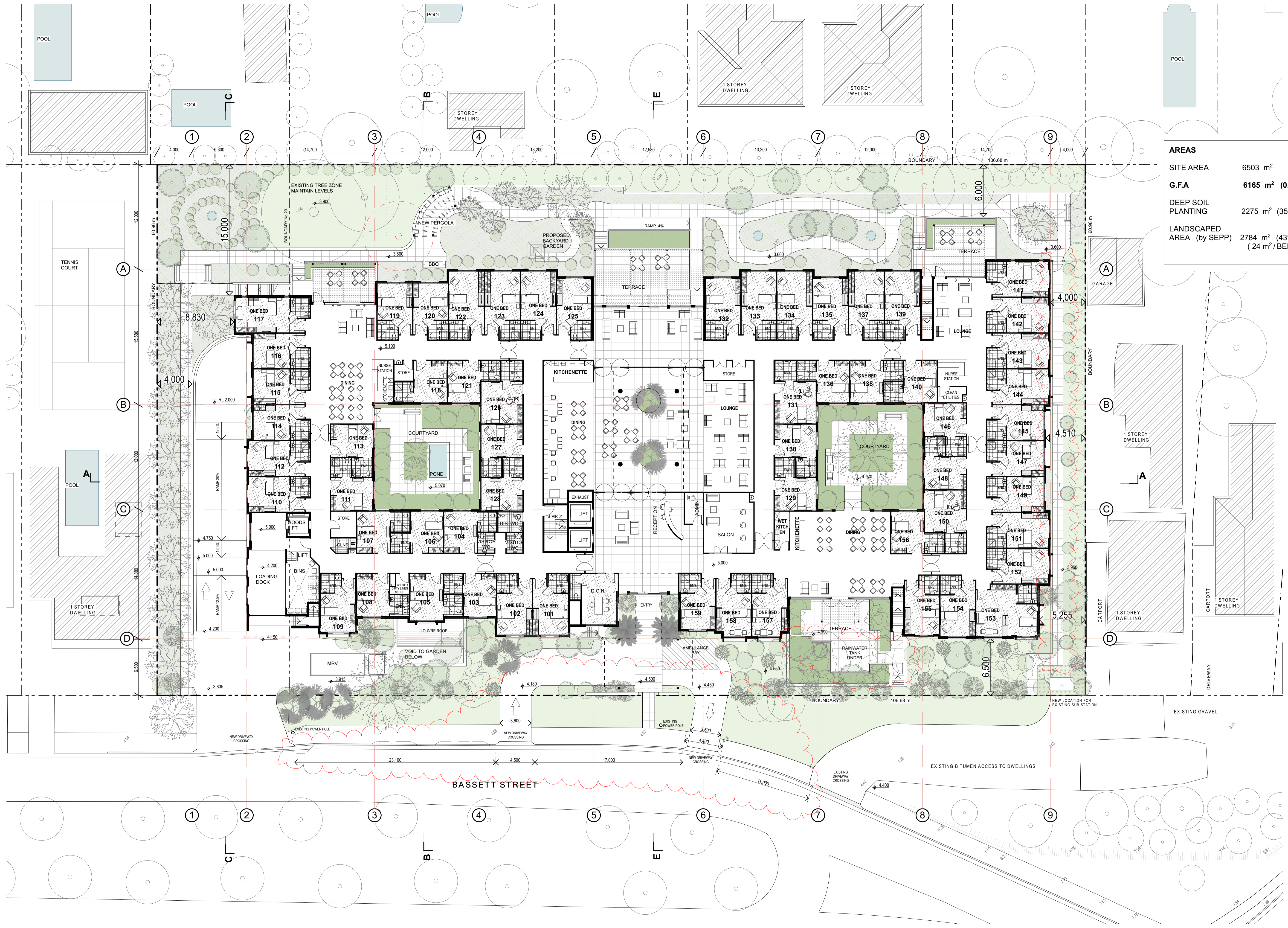




AREAS	
SITE AREA	6503 m ²
G.F.A	6165 m ² (0.95:1)
DEEP SOIL PLANTING	2275 m ² (35%)
LANDSCAPED AREA (by SEPP)	2784 m ² (43%) (24 m ² /BED)

PARKING REQUIREMENTS	
50 STAFF	25 SPACES
RESIDENTS	
118 BEDS	11.8 SPACES
TOTAL	37 SPACES
	(39 PROPOSED)





AREAS	
SITE AREA	6503 m ²
G.F.A	6165 m ² (0.95:1)
DEEP SOIL PLANTING	2275 m ² (35%)
LANDSCAPED AREA (by SEPP)	2784 m ² (43%) (24 m ² /BED)

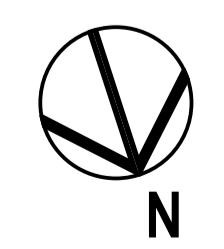


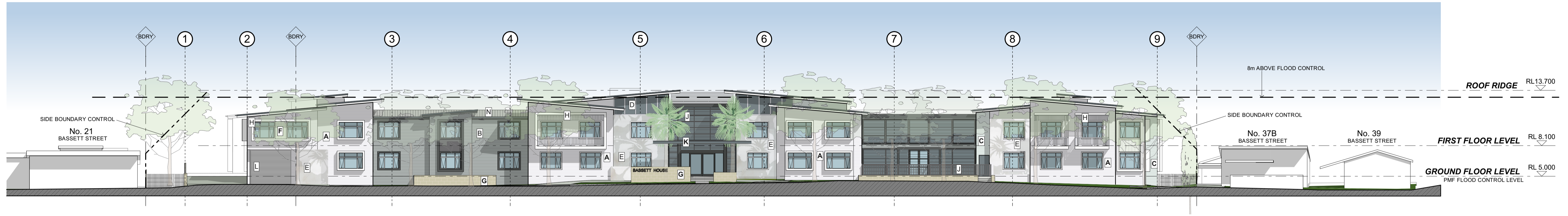


AREAS	
SITE AREA	6503 m ²
G.F.A	6165 m ² (0.95:1)
DEEP SOIL PLANTING	2275 m ² (35%)
LANDSCAPED AREA (by SEPP)	2784 m ² (43%) (24 m ² / BED)

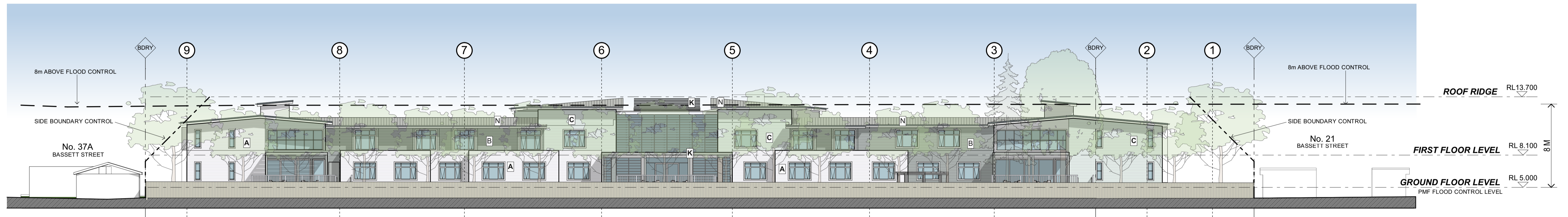
↑ 25% REAR SITE SETBACK

↑ 25% REAR SITE SETBACK





NORTH ELEVATION

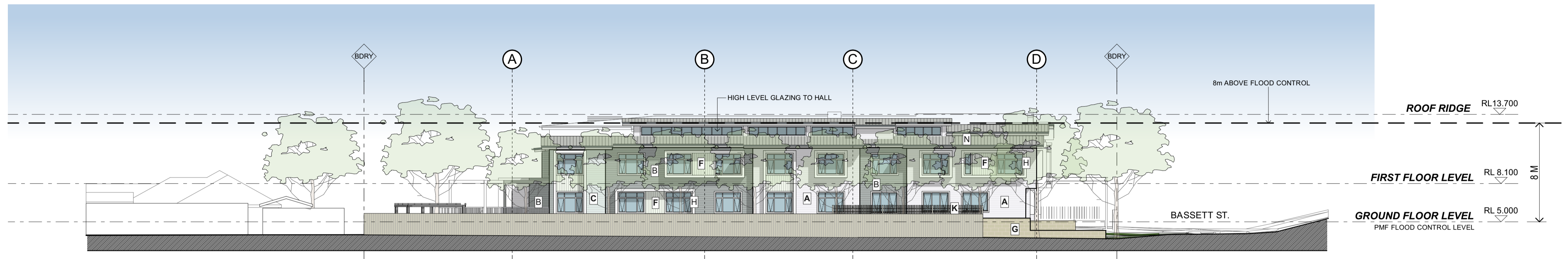


SOUTH ELEVATION

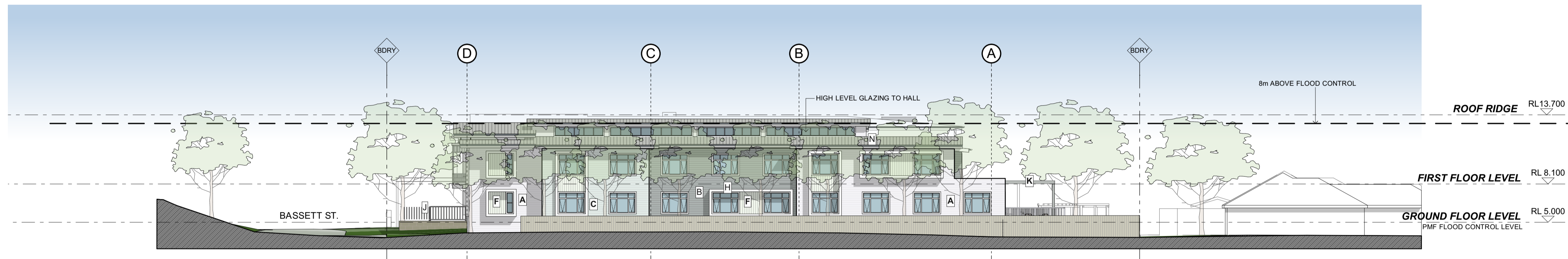
EXTERNAL FINISHES

NOTE: FINISHES AND IMAGES SHOWN ARE INDICATIVE OF DESIGN INTENT ONLY

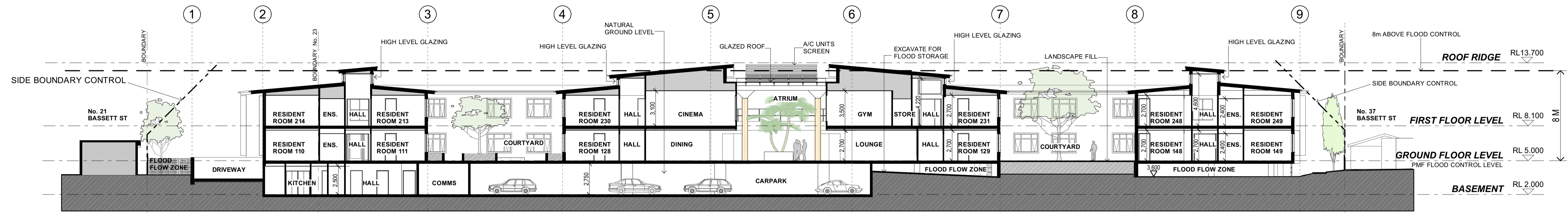
<p>FC CLADDING</p> <p>A WEATHERBOARD JH SCYON STRIA 325 VERTICAL COLOUR - OFF WHITE GREY</p> <p>B WEATHERBOARD JH PRIMELINE NEWPORT 170 COLOUR - DARK NEUTRAL GREY</p> <p>C WEATHERBOARD JH PRIMELINE NEWPORT 170 COLOUR - PALE BLUE GREY</p> <p>D FLAT SHEET COLOUR - PAINT LIGHT GREY</p> <p>E GRAPHIC WALL CLADDING FLORAL GRAPHIC BY LOCAL ARTIST PAINT OR SHAPED FC PANELS - NEUTRAL COLOURS</p> <p>F WEATHERBOARD VERT. JH SCYON 133 COLOUR - WHITE</p>	<p>STONE CLADDING</p> <p>G MAIN STONE CLADDING SMOOTH FACE SANDSTONE</p>	<p>FACADE FEATURES</p> <p>H FACADE TRIMS COLOUR OFF WHITE</p>	<p>METALWORK COLOUR</p> <p>J DARK METALWORK COLOUR - COLORBOND BASALT</p> <p>K LIGHT METALWORK COLOUR - METALLIC SILVER GREY</p> <p>L ROLLER SHUTTER COLOUR - OFF WHITE</p>	<p>ROOF FINISHES</p> <p>N METAL SHEET ROOFING COLORBOND - SHALE GREY</p> <p>P PEBBLE ROOF BALAST RIVER PEBBLE</p>
--	--	---	---	--



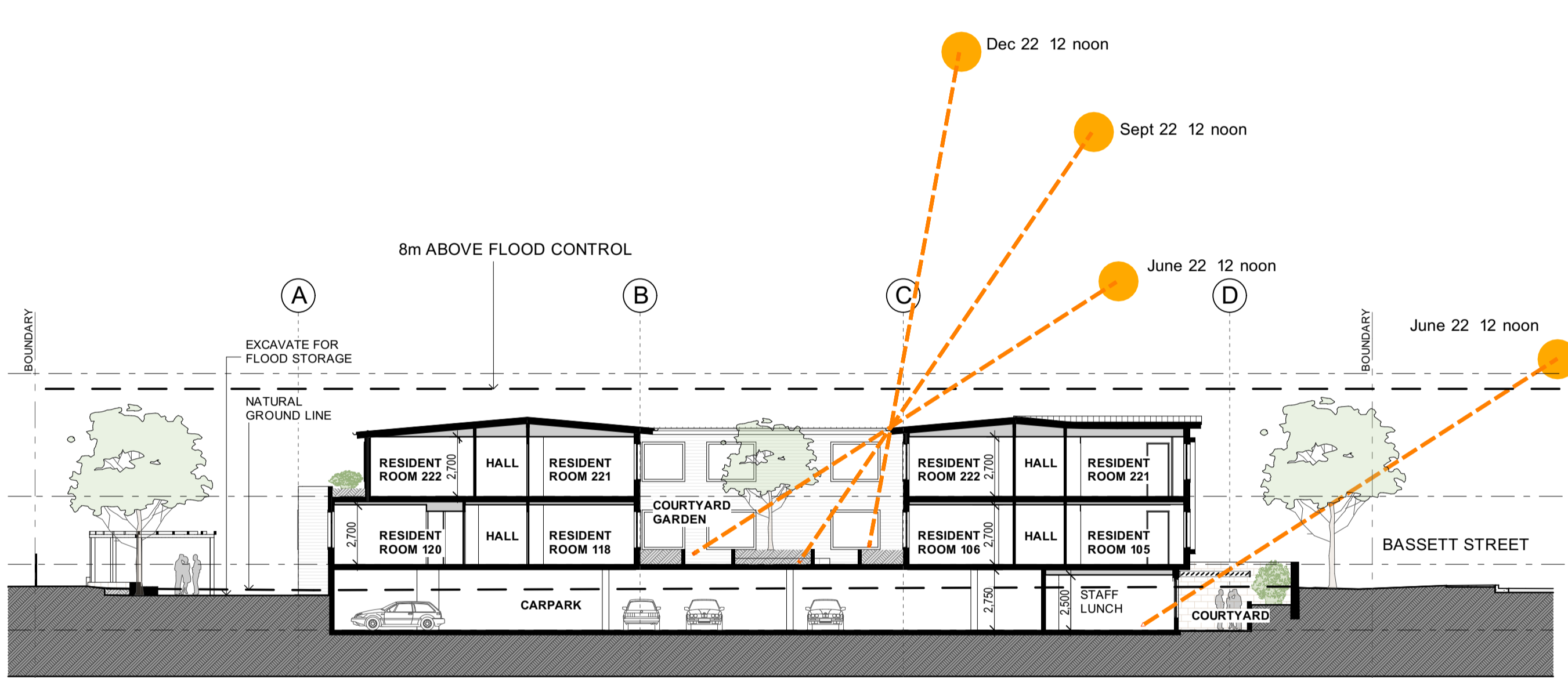
EAST ELEVATION



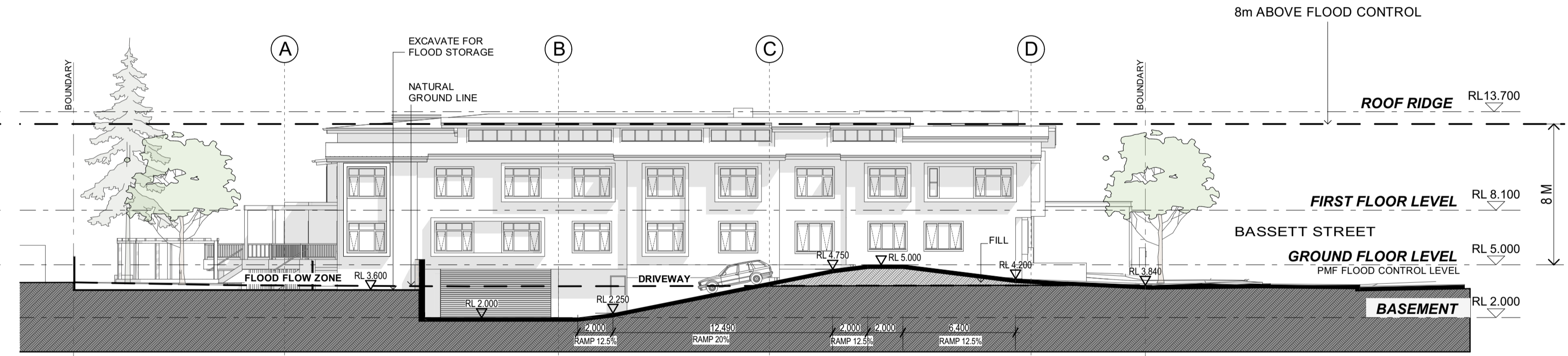
WEST ELEVATION



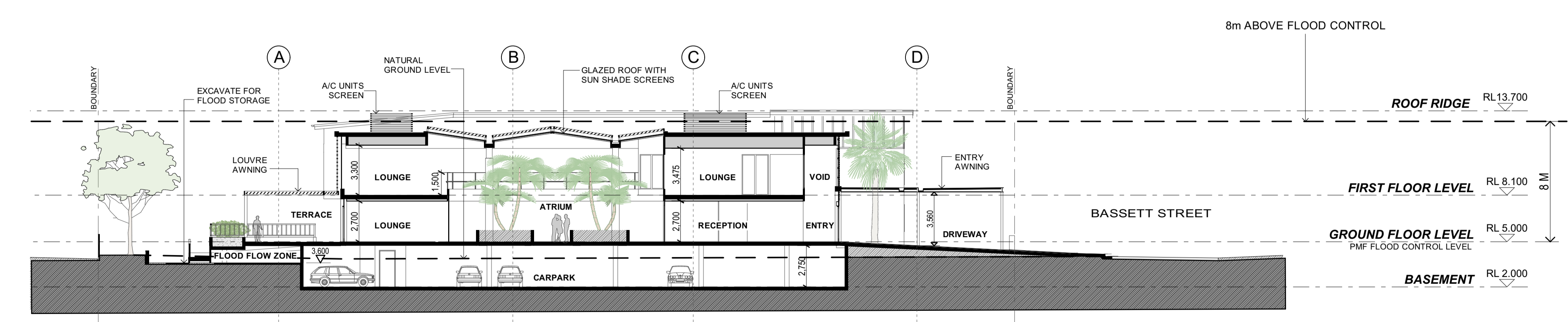
SECTION A



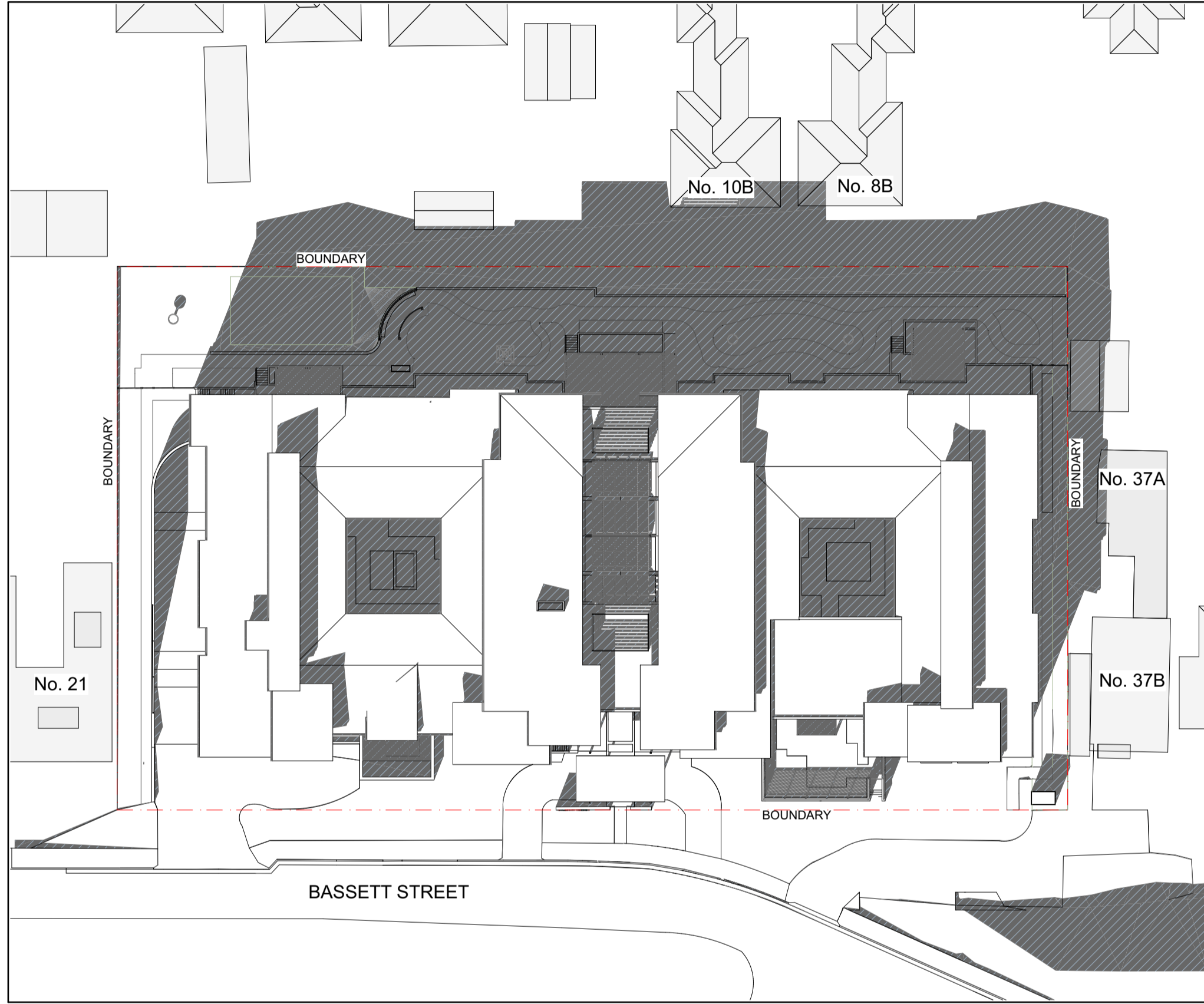
SECTION B



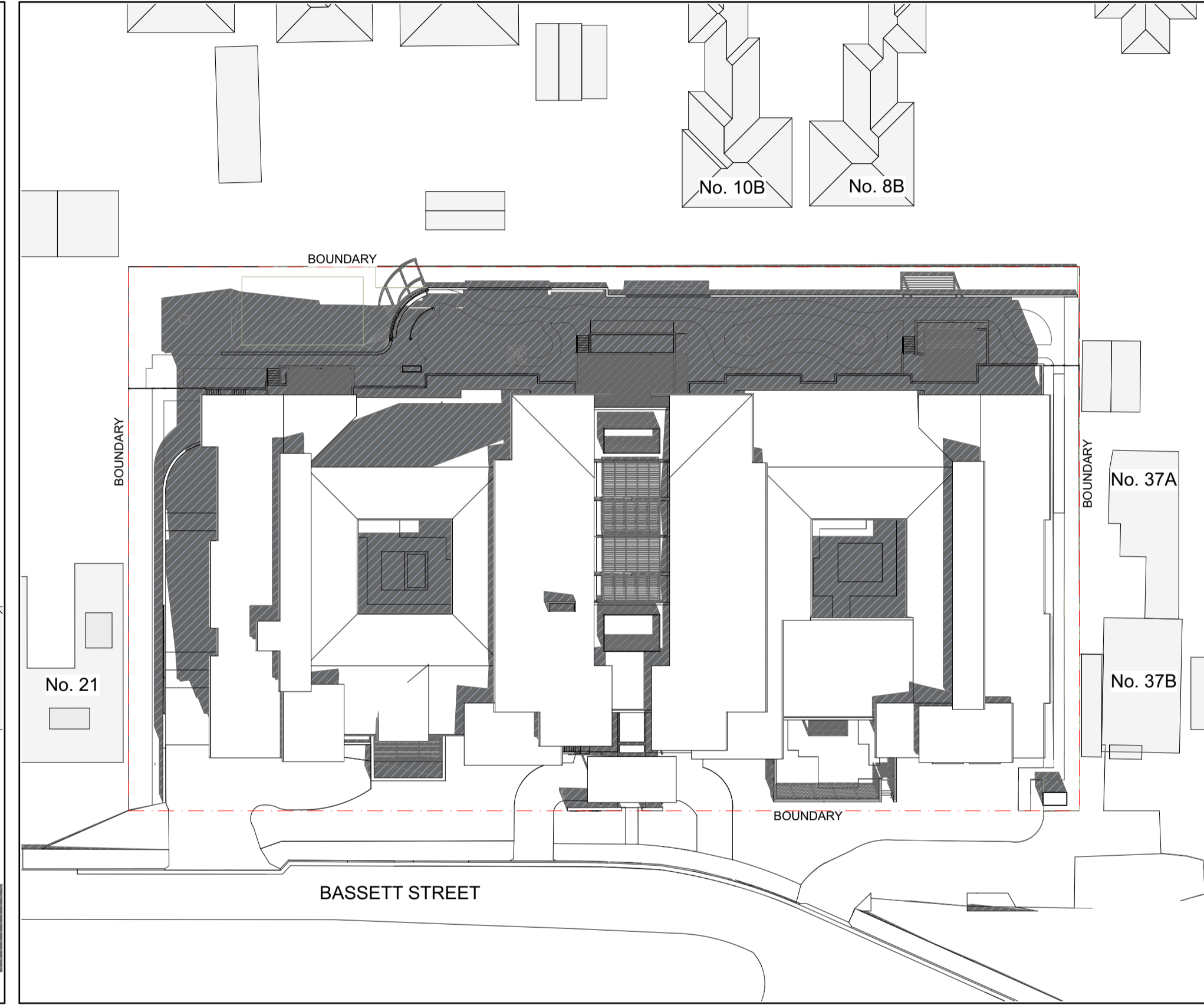
SECTION C



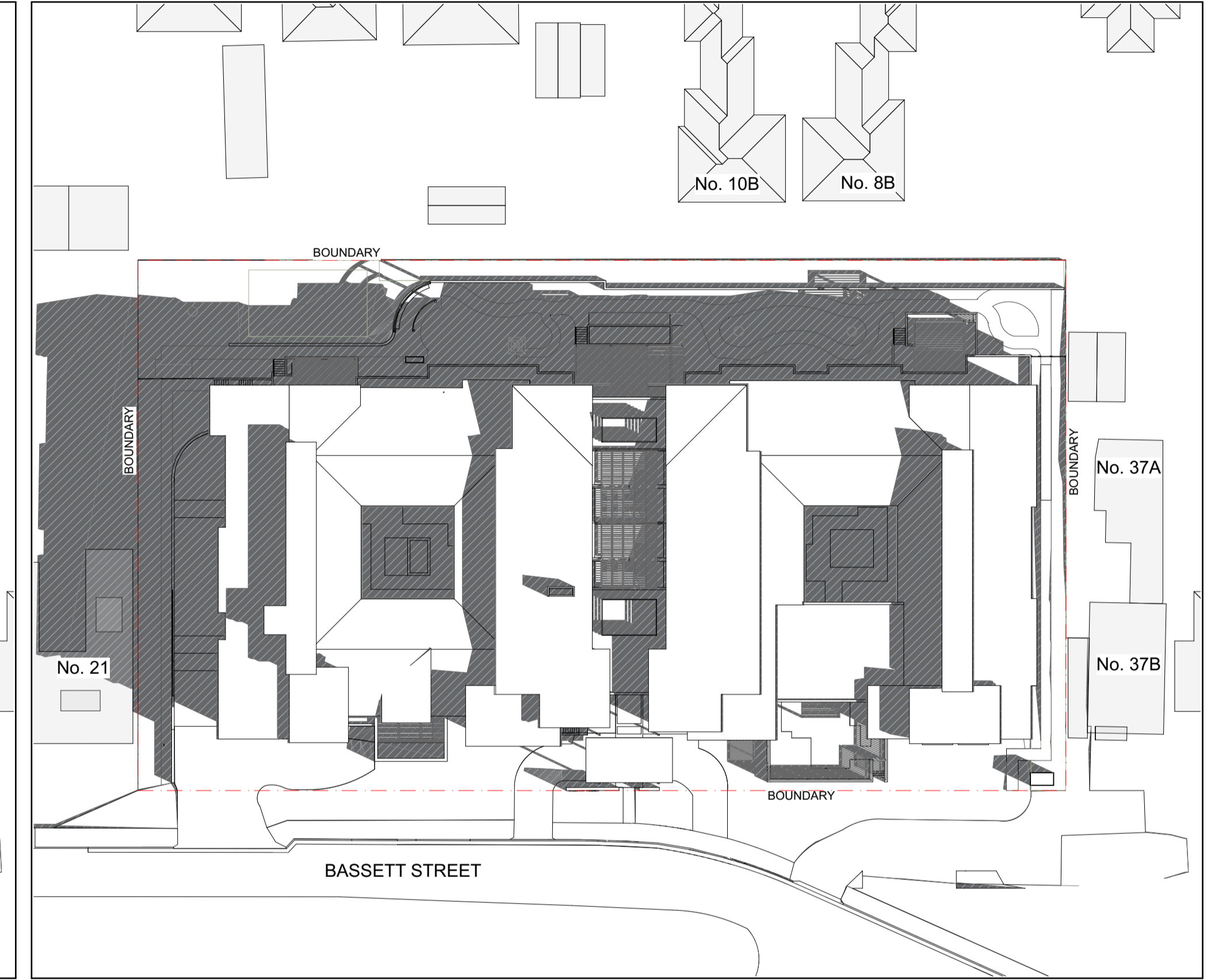
SECTION E



Jun-22-9am



Jun-22-12pm



Jun-22-3pm

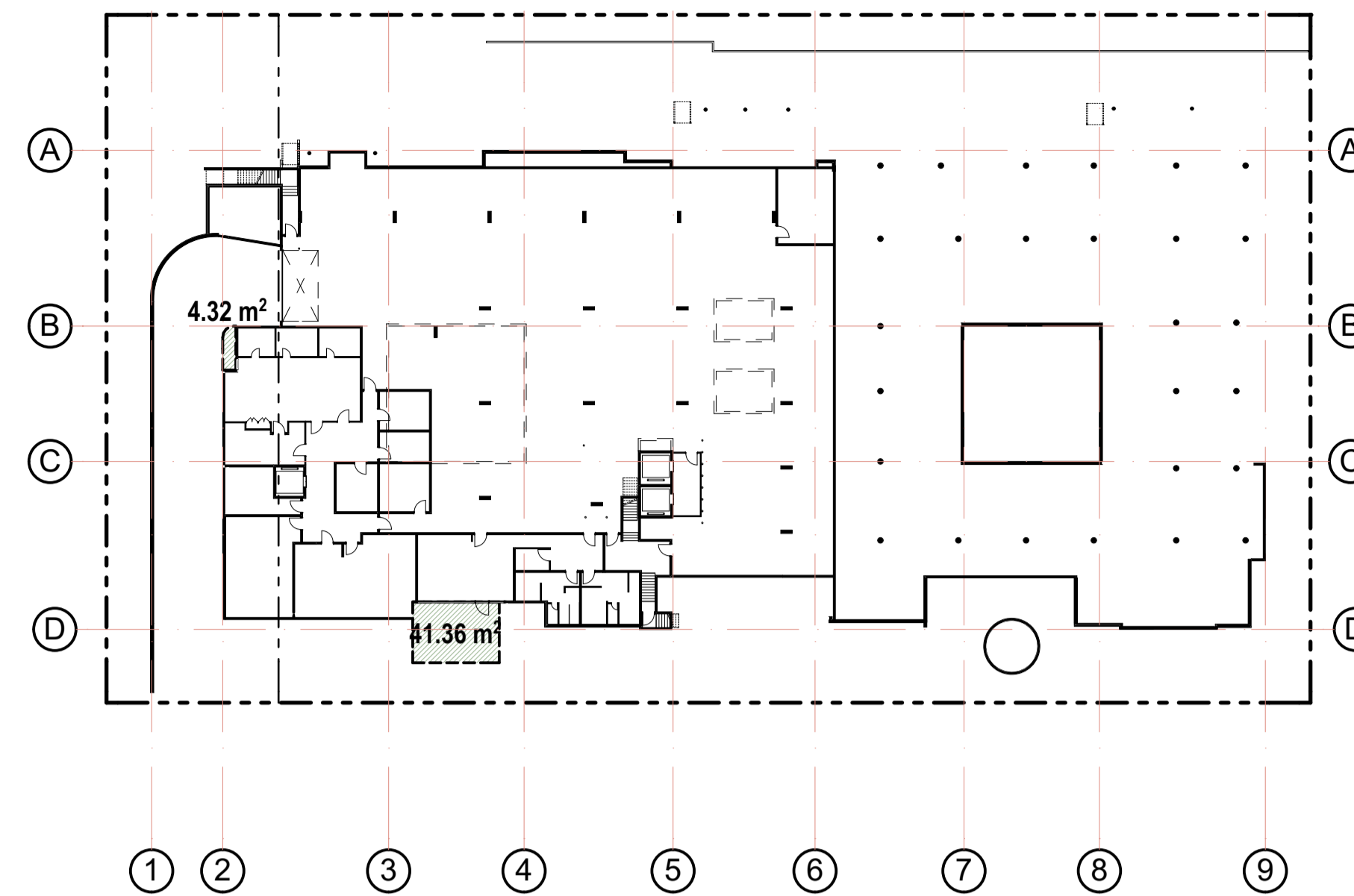
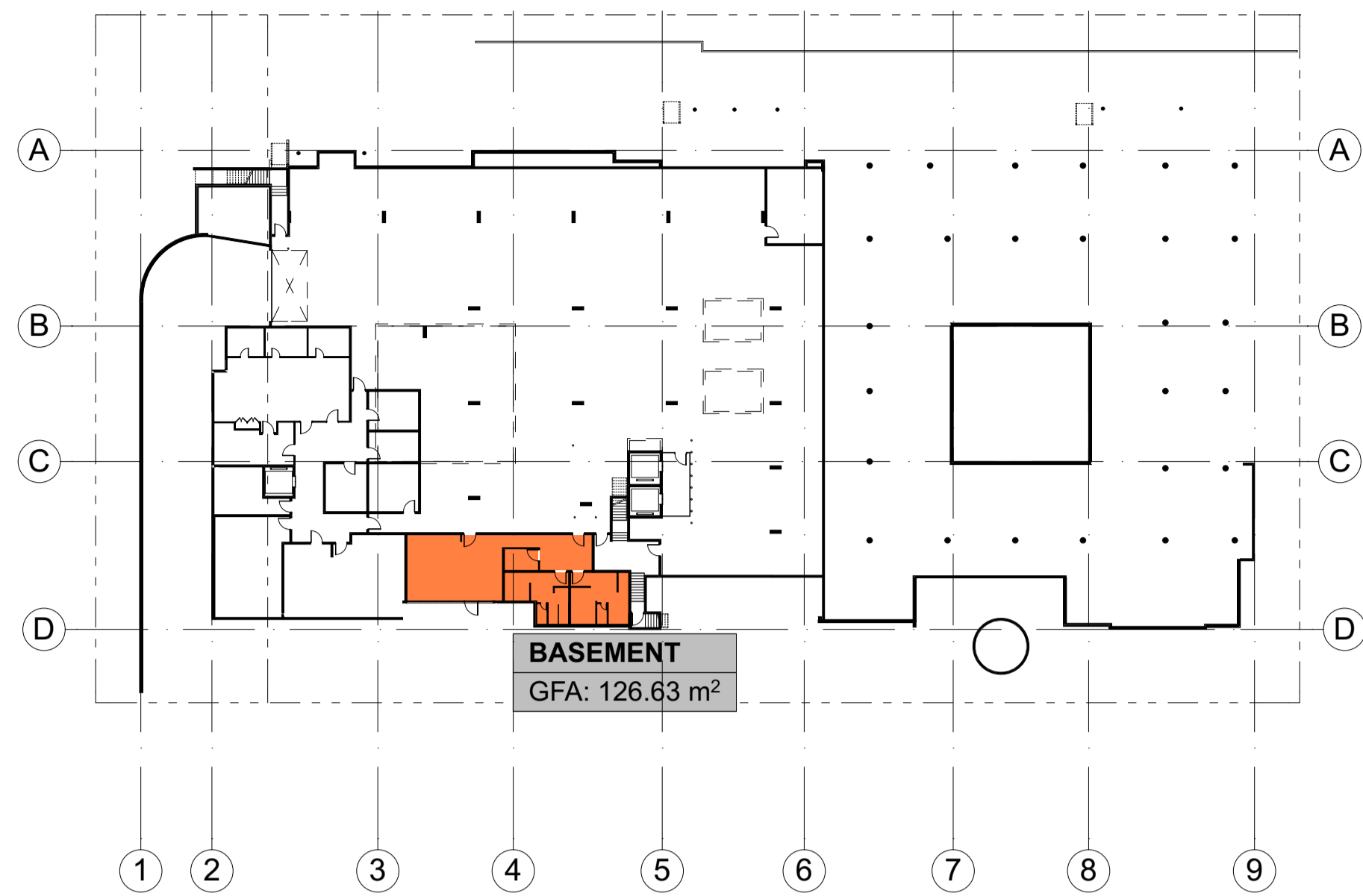




BASSETT STREET VIEW



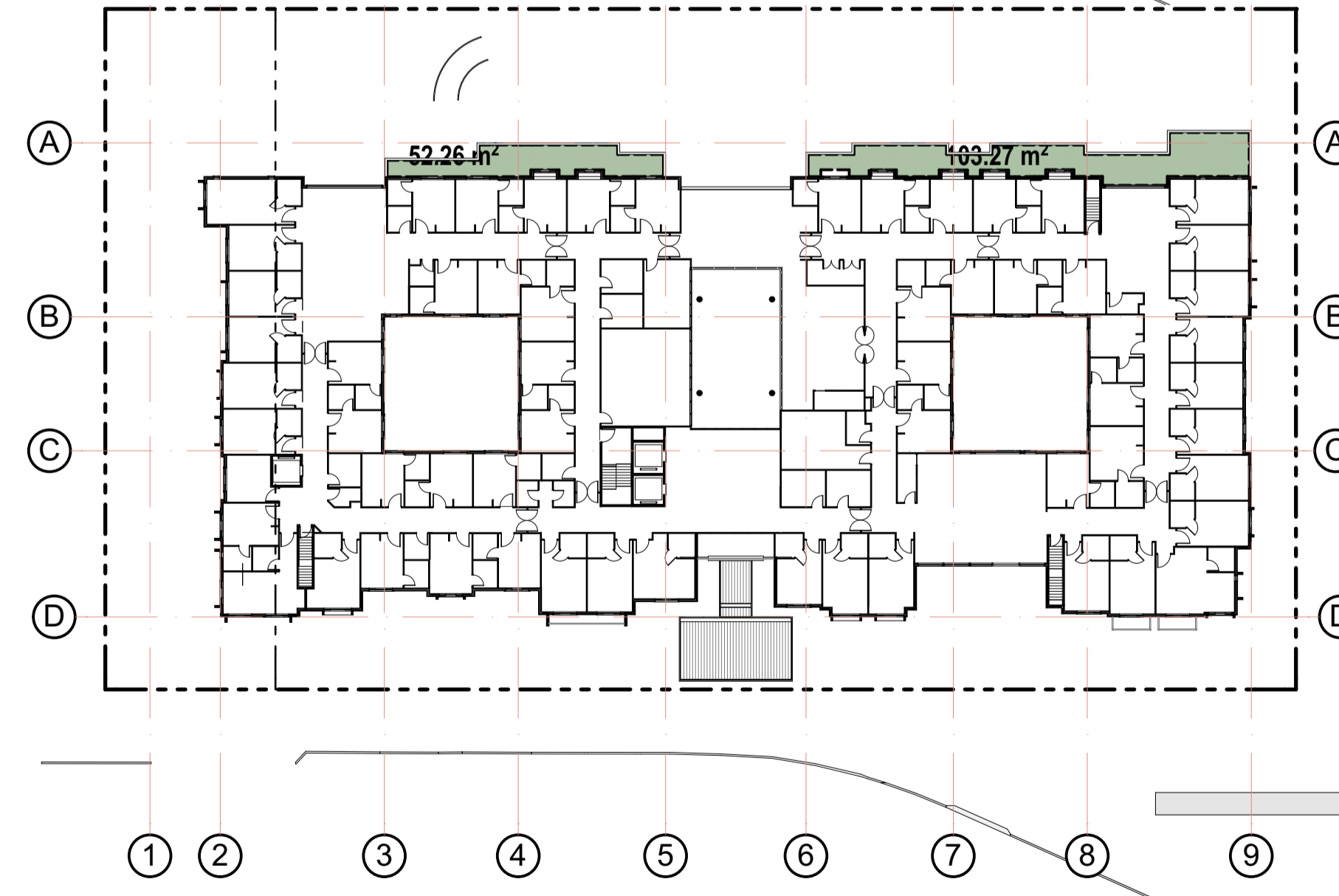
ENTRY



LANDSCAPE AREA

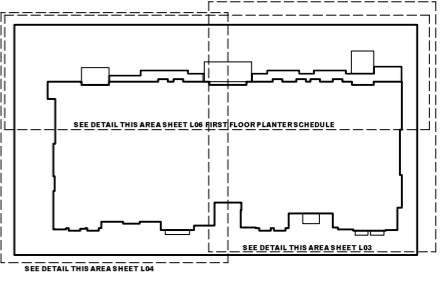
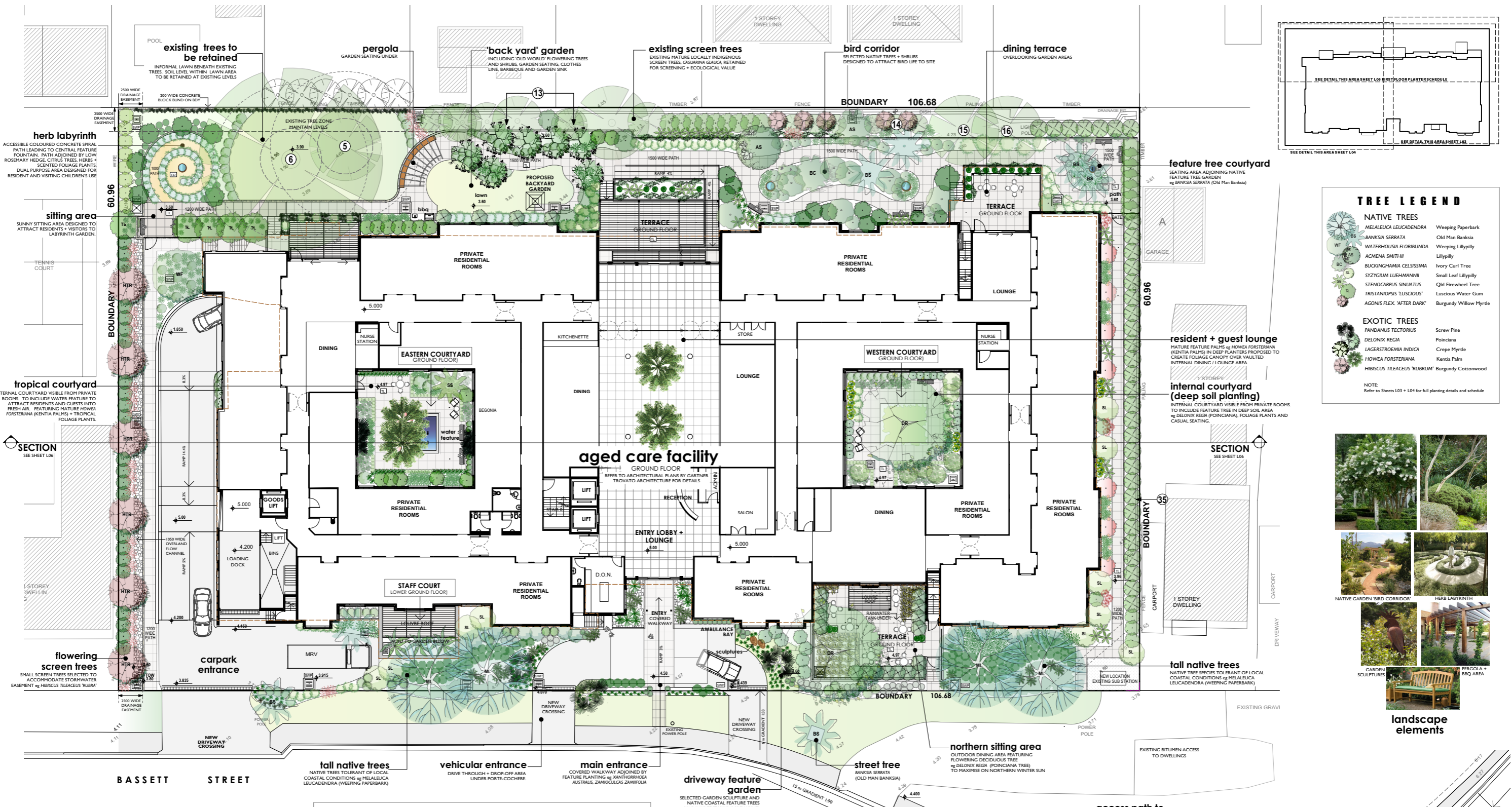
- PLANTER
- DEEP SOIL

AREAS	
SITE AREA	6503 m ²
G.F.A	6165 m² (0.95:1)
DEEP SOIL PLANTING	2275 m ² (35%)
LANDSCAPED AREA (by SEPP)	2784 m ² (43%) (24 m ² /BED)



PARKING REQUIREMENTS	
50 STAFF	25 SPACES
RESIDENTS	
118 BEDS	11.8 SPACES
TOTAL	37 SPACES
	(39 PROPOSED)

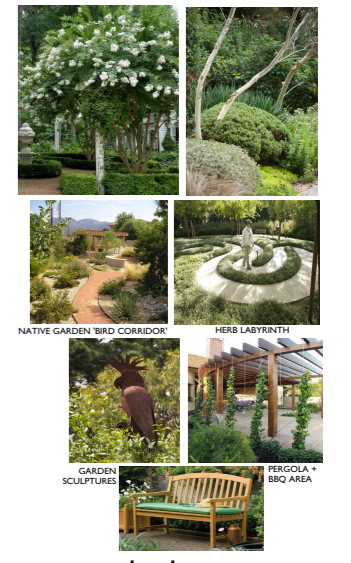




TREE LEGEND

NATIVE TREES	
MELALEUCA LEUCADENDRA	Weeping Paperbark
BANKSIA SERRATA	Old Man Banksia
WATERHUSIA FLORIBUNDA	Weeping Lillypilly
ACMENA SMITHII	Lillypilly
BUCKINGHAMIA CELSISIMA	Ivory Curl Tree
STYZIGIUM LUEHMANNII	Small Leaf Lillypilly
STENOCARPUS SINULATUS	Old Firewheel Tree
TRISTANOPSIS 'LUSCIOUS'	Luscious Water Gum
AGONIS FLEX 'AFTER DARK'	Burgundy Willow Myrtle
EXOTIC TREES	
PANDANUS TECTORIUS	Screw Pine
DELONIX REGIA	Poinciana
LAGERSTROEMIA INDICA	Crape Myrtle
HOWEA FORSTERIANA	Kentia Palm
HIBISCUS TILACEUS 'RUBRUM'	Burgundy Cottonwood

NOTE:
Refer to Sheets L03 + L04 for full planting details and schedule



SITE LANDSCAPE PLAN

SCALE: 1:200 @ A1
REFER TO SHEET L03, L04 + L06 PLANTING PLANS FOR FULL PLANTING DETAILS

0m 2m 4m 6m 8m 10m

NOTE
PLAN TO BE READ IN CONJUNCTION WITH:
ARCHITECTURAL PLANS BY GARTNER TROYATO ARCHITECTS
ARBORESCENT IMPACT ASSESSMENT BY URBAN FORESTRY AUSTRALIA (Feb 2020)

LEGEND

PROPOSED LEVELS	MASONRY RETAINING WALLS	TEED COURTYARDS + PATHWAYS
EXISTING SPOT LEVELS	LOW STONE EDGE ADJOINING PATHS + GARDEN BEDS	PILE MULCH INCLUDING OVERLAND FLOW PATH
BOUNDARY	SELECTED GARDEN SCULPTURES	CONCRETE DRIVEWAY
EXISTING TREES TO BE RETAINED	INFORMAL GARDEN SEATING	TEED INTERNAL COURTYARDS
LINE OF UNDERGROUND CARPAK	1000mm WIDE STABILISED DICO GRANITE PATH	LAWN AREA SUR WALTER BUFFALO
STORMWATER PITS		

LANDSCAPE DESIGN PRINCIPLES

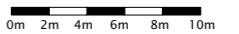
- TO COMPLEMENT AND ENHANCE THE EXISTING STREETSCAPE**
 - PROPOSAL DESIGNED TO PROVIDE LANDSCAPE SURROUNDINGS THAT REFLECT AND HARMONISE WITH EXISTING STREETSCAPE AND CREATE A DISTINCT LANDSCAPE CHARACTER.
 - CANOPY TREES WITHIN FRONT BUILDING SETBACK (MELALEUCA LEUCADENDRA (WEeping PAPERBARK) SELECTED TO SCREEN + SOFTEN THE BUILT FORM AND PROVIDE CONSISTENCY WITH THE LOCALITY.
 - ENTRANCE FEATURE PLANTING OF PANDANUS TECTORIUS (SCREW PINE) PROPOSED TO REINFORCE COASTAL NATURE OF THE SITE
 - A COMBINATION OF FOLIAGE AND FLOWERING SPECIES ARE DESIGNED TO ENHANCE THE PRESENTATION EXPERIENCE IN BASSETT STREET
 - NEW STREET TREES BANKSIA SERRATA (OLD MAN BANKSIA) PROPOSED TO COMPENSATE FOR EXISTING STREET TREES REMOVED FOR DEVELOPMENT.
- TO REDUCE THE IMPACT OF THE BUILT FORM**
 - CANOPY TREES AND UNDERSTORY PLANTING PROPOSED TO PROVIDE SCALE AND SOFTEN THE BUILT FORM, PRESENTING THE DEVELOPMENT WITHIN A VEGETATED SETTING AND MINIMISING THE VISUAL IMPACT.
 - INTERNAL COURTYARD TREES ARE PROPOSED TO PROVIDE UNDERGROUND TO REDUCE THE VISUAL IMPACT OF DEVELOPMENT AND REDUCE IMPACT ON STREET AND ADJOINING PROPERTIES.
- TO PROTECT EXISTING TREES**
 - ALL TREES IDENTIFIED AS SUITABLE FOR RETENTION IN ARBORESCENT ASSESSMENT SHALL BE RETAINED AND PROTECTED TO PROVIDE FUTURE AMENITY.
 - NO HIGH RETENTION VALUE TREES PROPOSED FOR REMOVAL.
- TO REPLENISH TREE CANOPY + COMPENSATE FOR TREE REMOVAL**
 - THE FOLLOWING CANOPY TREES HAVE BEEN PROPOSED TO COMPENSATE FOR TREES TO BE REMOVED AND TO REPLENISH NEIGHBOURHOOD TREE CANOPY:
 - MELALEUCA LEUCADENDRA WEeping PAPERBARK (4)
 - ACMENA SMITHII LILLYPILLY (1)
 - BUCKINGHAMIA CELSISIMA IVORY CURL TREE (2)
 - WATERHUSIA FLORIBUNDA WEeping LILLYPILLY (1)
- TO CREATE A LANDSCAPE AS AN EXTENSION OF INTERNAL SPACES**
 - PERIMETER GARDENS AND LAWN AREA DESIGNED TO ENCOURAGE GENTLE EXERCISE AND FACILITATE FLEXIBLE OUTDOOR RECREATION WITH VISITORS.
 - EXTENDED VIEWS INTO THE GARDEN HAVE BEEN CONSIDERED TO ENHANCE DAILY LIFE FOR LESS ACTIVE RESIDENTS.
 - INTERNAL COURTYARD OFFER LEAFY OUTLOOKS FROM PRIVATE RESIDENTIAL ROOMS AND ARE ACCESSIBLE OUTDOOR SEATING AREAS.
 - OUTDOOR DINING AREAS AND TERRACES PROVIDE EXTENDED VIEWS INTO THE GARDENS.
- TO MAINTAIN NEIGHBOUR PRIVACY + AMENITY**
 - SCREEN PLANTING CONSISTING OF PRINCIPALLY FAST GROWING NATIVE SPECIES IS PROPOSED TO PROVIDE BOUNDARY PRIVACY SCREENING.
- TO ENHANCE THE GARDEN EXPERIENCE FOR RESIDENTS**
 - SPECIES SELECTION HAVE BEEN MADE WITH CONSIDERATION OF SITE CONDITIONS AND TO PROVIDE A STIMULATING RANGE OF FLOWER AND FOLIAGE TEXTURES AND COLOURS TO ENCOURAGE RESIDENTS' USE OF LANDSCAPE SPACE. NATIVE AND EXOTIC SPECIES HAVE BEEN INCLUDED. FEATURES INCLUDE:
 - LAWN AREA + LANDSCAPED GARDEN PATHWAYS
 - OUTDOOR SEATING IN SUN AND SHADE
 - YEAR ROUND COLOUR
 - 'BIRD CORRIDOR' NATIVE GARDEN
 - OLD WORLD 'BACK YARD GARDEN'
 - FLOWERING TREES + SHRUBS
 - GARDEN SCULPTURES
 - WATER TREATMENT YARD GARDEN
 - GARDEN PERGOLA + BBQ AREA
- TO PROVIDE FOR ACCESSIBLE USE OF GARDEN**
 - SAFE AND ACCESSIBLE SURFACE AS REQUIRED BY RELEVANT GUIDELINES TO ENSURE MAXIMUM POTENTIAL FOR RESIDENT USE OF OUTDOOR SPACES.
 - SAFETY MEASURES INCLUDING SURFACE SELECTION, GENTLE GRADIENTS, APPROPRIATE SEATING, HANDRAILS AND FENCING SHALL BE INCORPORATED.
- TO COMPLY WITH DESIGN PRINCIPLES OF SEPP**
 - THE PROPOSED LANDSCAPE AMPS TO MEET THE DESIGN PRINCIPLES OF THE RELEVANT SEPP (HOUSING FOR SENIORS OR PEOPLE WITH A DISABILITY) 2004.
 - REFER TO ARCHITECTURAL PLANS FOR DEEP SOIL AND SITE CALCULATIONS.

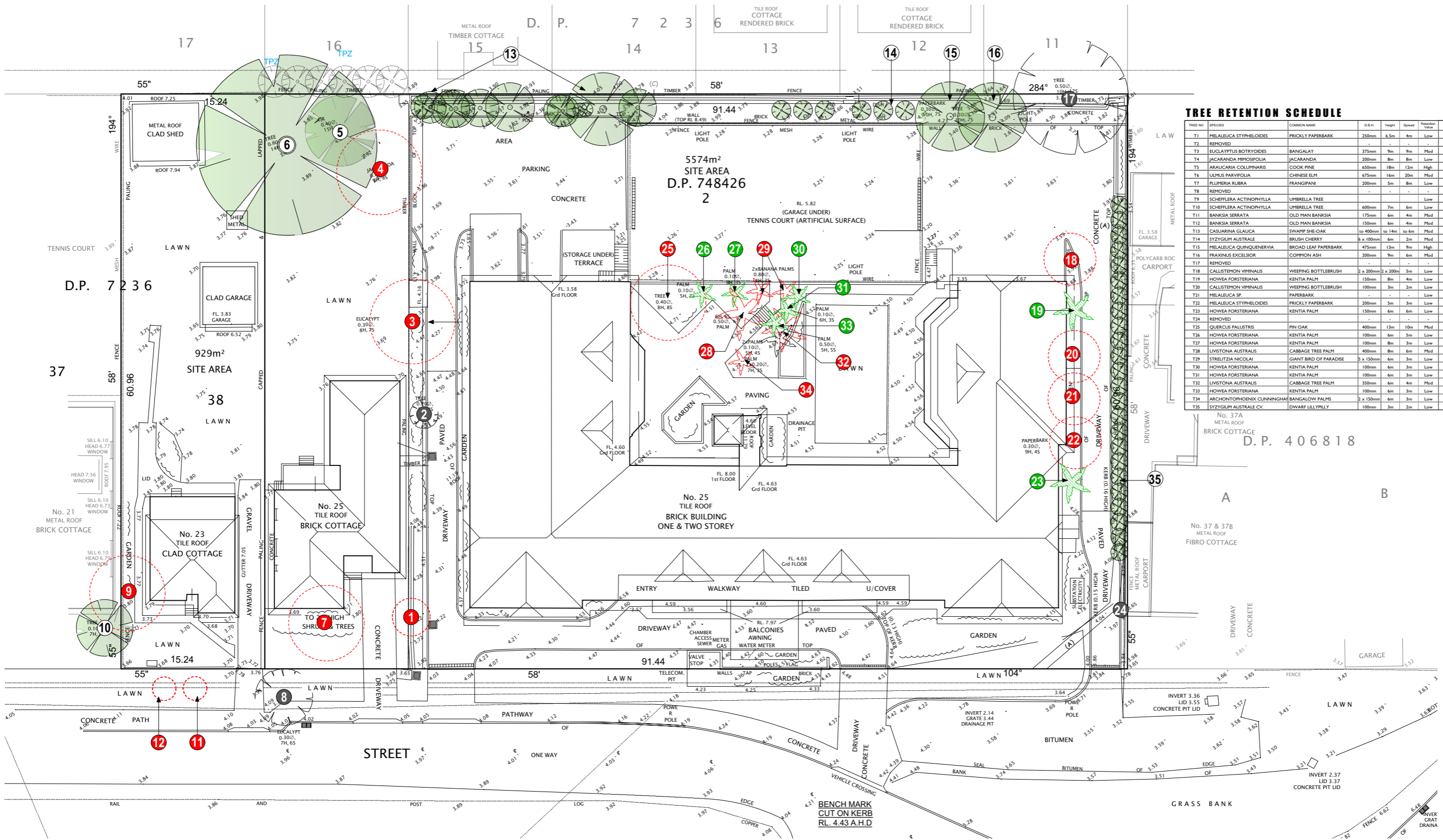


trish dobson landscape architecture
34 MORRIS PARKS AVENUE, MONA VALE NSW 2107
0408 983020
trish@trishdobson.com.au
TRISH DOBSON
REGISTERED LANDSCAPE ARCHITECT #4106
17/11/2017 1:48:15A

DEVELOPMENT APPLICATION
THOMPSON HEALTH BASSETT
Proposed Aged Care Facility
for Thompson Health Care
23 + 33 BASSETT ST, MONA VALE NSW

LANDSCAPE SITE PLAN
1:200 @ A1 SCALE
24.3.20 DATE
2023 JOB
DA ISSUE
1 of 6 SHEET
2003/ DA-L01 DWG



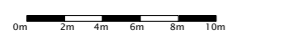


TREE RETENTION SCHEDULE

TREE NO.	SPECIES	COMMON NAME	D.B.H.	Height	Spread	Retention Value	STATUS
T1	MELALEUCA STYPHELOIDES	PRICKLY PAPERBARK	250mm	6.5m	4m	Low	Remove for Works
T2	REMOVED						
T3	EUCALYPTUS BOTRYOIDES	BANGALAY	375mm	9m	9m	Mod	Remove for Works
T4	JACARANDA MIMOSIFOLIA	JACARANDA	200mm	8m	8m	Low	Remove (Exempt)
T5	ARAUCARIA COLUMNARIS	COOK PINE	650mm	18m	12m	High	Retain + Protect
T6	ULMUS PARVIFOLIA	CHINESE ELM	675mm	16m	20m	Mod	Retain + Protect
T7	PLUMERIA RUBRA	FRANGIPANI	200mm	5m	8m	Low	Remove for Works
T8	REMOVED						
T9	SCHEFFERA ACTINOPHYLLA	UMBRELLA TREE				Low	Remove (Exempt)
T10	SCHEFFERA ACTINOPHYLLA	UMBRELLA TREE	600mm	7m	6m	Low	Remove (Exempt)
T11	BANKSIA SERRATA	OLD MAN BANKSIA	175mm	6m	4m	Mod	Remove for Works
T12	BANKSIA SERRATA	OLD MAN BANKSIA	150mm	6m	4m	Mod	Remove for Works
T13	CASUARINA GLAUCA	SWAMP SHE-OAK	to 400mm	to 14m	to 6m	Mod	Retain + Protect
T14	SYZYGIUM AUSTRALE	BRUSH CHERRY	6 x 100mm	6m	2m	Mod	Retain + Protect
T15	MELALEUCA QUINQUENERVIA	BROAD LEAF PAPERBARK	475mm	13m	9m	High	Remove + Protect
T16	FRAXINUS EXCELSIOR	COMMON ASH	200mm	9m	6m	Mod	Retain + Protect
T17	REMOVED						
T18	CALLISTEMON VIMINALIS	WEeping BOTTLEBRUSH	2 x 200mm	2 x 200m	5m	Low	Remove (Exempt)
T19	HOWEA FORSTERIANA	KENTIA PALM	150mm	8m	4m	Low	Transplant if Viable
T20	CALLISTEMON VIMINALIS	WEeping BOTTLEBRUSH	100mm	3m	2m	Low	Remove
T21	MELALEUCA SP.	PAPERBARK	-	-	-	Low	Remove
T22	MELALEUCA STYPHELOIDES	PRICKLY PAPERBARK	200mm	5m	3m	Low	Transplant if Viable
T23	HOWEA FORSTERIANA	KENTIA PALM	150mm	6m	6m	Low	Transplant if Viable
T24	REMOVED						
T25	QUERCUS PALLISTRIS	PIN OAK	400mm	13m	10m	Mod	Remove for Works
T26	HOWEA FORSTERIANA	KENTIA PALM	100mm	6m	5m	Low	Transplant if Viable
T27	HOWEA FORSTERIANA	KENTIA PALM	100mm	8m	3m	Low	Transplant if Viable
T28	LIVISTONIA AUSTRALIS	CABBAGE TREE PALM	400mm	8m	6m	Mod	Remove
T29	STRELTIZIA NICOLAI	GIANT BIRD OF PARADISE	5 x 150mm	6m	3m	Low	Remove for Works
T30	HOWEA FORSTERIANA	KENTIA PALM	100mm	6m	3m	Low	Transplant if Viable
T31	HOWEA FORSTERIANA	KENTIA PALM	100mm	6m	3m	Low	Transplant if Viable
T32	LIVISTONIA AUSTRALIS	CABBAGE TREE PALM	350mm	6m	4m	Mod	Remove
T33	HOWEA FORSTERIANA	KENTIA PALM	100mm	6m	3m	Low	Transplant if Viable
T34	ARCHONTOBIUM CUNNINGHAMII	BANGALOW PALMS	2 x 150mm	6m	3m	Low	Remove (Exempt)
T35	SYZYGIUM AUSTRALE CV.	DWARF LILLYPILLY	100mm	3m	2m	Low	Retain + Protect

TREE RETENTION PLAN

SCALE 1:200 @ A1
 NOTE: PLAN TO BE READ IN CONJUNCTION WITH ARCHITECTURAL PLANS BY GARTNER TROVATO ARCHITECTS AND ARBORICULTURAL IMPACT ASSESSMENT BY PAINTREE CONSULTING



LEGEND

	PROPOSED LEVELS		EXISTING TREES TO BE RETAINED ON SITE		KENTIA PALMS TO BE TRANSPLANTED
	EXISTING SPOT LEVELS		EXISTING TREES TO BE RETAINED OFF SITE		EXISTING PALMS TO BE REMOVED
	EXISTING TREES TO BE REMOVED		SURVEYED TREES LOCATED ON SITE		

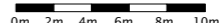
TREE RETENTION AIMS

- TO REMOVE ONLY THOSE TREES LOCATED WITHIN THE FOOTPRINT OF THE PROPOSED BUILDING OR DRIVEWAY OR THOSE TREES DEEMED BY THE PROJECT ARCHITECT TO BE UNSTABLE, BEYOND THEIR USEFUL LIFE EXPECTANCY / SINESCENT, OR THOSE TREES IDENTIFIED AS EXEMPT FROM PROTECTION UNDER PIT/WATER DCP.
- TO RETAIN NATIVE TREES T13 CASUARINA GLAUCA, T14 SYZYGIUM AUSTRALE, T15 MELALEUCA QUINQUENERVIA ALONG THE SOUTHERN BOUNDARY WHICH OFFER ESTABLISHED SCREENING AND AMENITY.
- TO TRANSPLANT SUITABLE MATURE PALM TREES REQUIRED TO BE REMOVED FOR THE DEVELOPMENT ELSEWHERE ON SITE SO AS TO PROVIDE AN ESTABLISHED CONTRIBUTION TO THE FUTURE LANDSCAPE AREAS OF THE AGED FACILITY.
- TO RETAIN EXISTING SCREEN SHRUBS T25 SYZYGIUM AUSTRALE IDENTIFIED BY SURVEY ON WESTERN BOUNDARY AS VALUABLE PRIVACY SCREENING ALONG NEIGHBOURING PROPERTY BOUNDARY.
- THE LANDSCAPE PLANS HAVE BEEN INFORMED BY THE DETAILED ARBORICULTURAL REPORT PREPARED BY URBAN FORESTRY AUSTRALIA. TREE NUMBERS ALLOCATED IN THE ARBORICULTURAL REPORT HAVE BEEN USED ON LANDSCAPE PLANS. SEVERAL YOUNG TREES / SHRUBS, CONSIDERED USEFUL FOR RETENTION AND NOT SHOWN ON SURVEY HAVE ALSO BEEN INCLUDED ON LANDSCAPE PLANS.

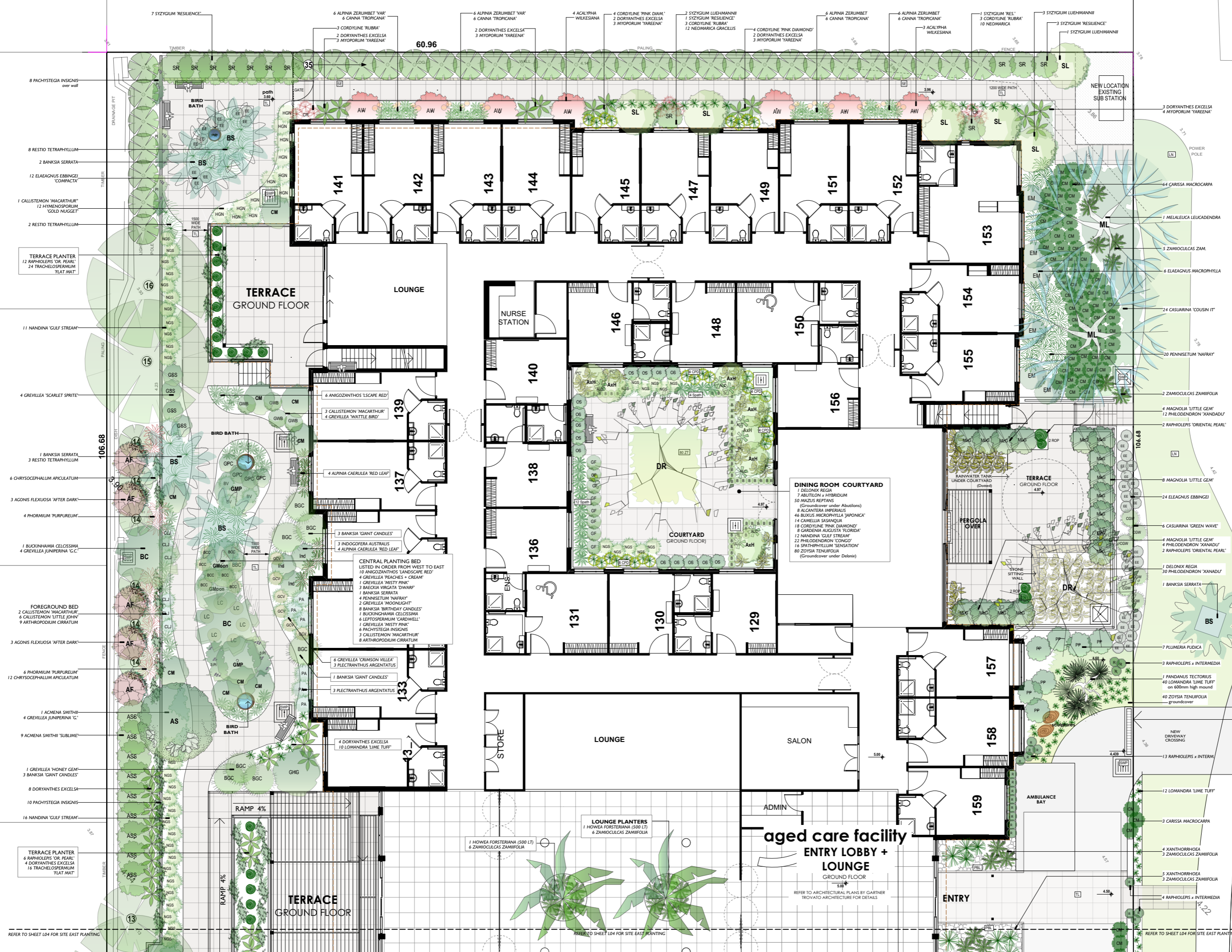


trish dobson landscape architecture
 144 MARINE PARADE, AVALON, VIC 3107
 0408 983020
 trish@trishdobson.com.au
 REGISTERED LANDSCAPE ARCHITECT #410, #10731-21157

DEVELOPMENT APPLICATION
 THOMPSON HEALTH BASSETT
 Proposed Aged Care Facility
 for Thompson Health Care
 23 + 33 BASSETT ST, MONA VALE NSW



TREE RETENTION PLAN
 1:200 @ A1 SCALE
 DATE 24.12.2003
 JOB THOMPSON HEALTH CARE
 DRAWN BY TRISH DOBSON
 CHECKED BY TRISH DOBSON
 2 of 6 SHEETS
 DWG 2003/DA-L02



NOTE:
REFER TO SHEET L04 FOR PLANTING DETAILS EASTERN PORTION OF SITE.
REFER TO SHEET L05 FOR FULL PLANTING SCHEDULE.

AMENDMENTS

frish DOBSON
frish dobson landscape architecture
340 HARKING PARADE, AVALON, NSW 2107
0408 983000
frish@frishdobson.com.au

© FRISH DOBSON LANDSCAPE ARCHITECTURE
BUILDER TO CHECK ALL DIMENSIONS PRIOR TO CONSTRUCTION.
IF THERE ARE ANY DISCREPANCY BETWEEN THE PRINTED FIGURES AND SCALED DIMENSIONS, THE PRINTED DIMENSIONS SHALL PREVAIL.

CLIENT
Thompsons Health Care

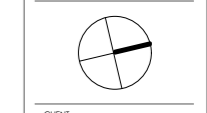
PROJECT
AGED CARE FACILITY
23 + 33 BASSETT STREET
MONA VALE

DRAWING
PLANTING PLAN WEST

SCALE
DATE 1:000@A1
ISSUE 24.2.20
SHEET DA 3 of 6

JOB
2003

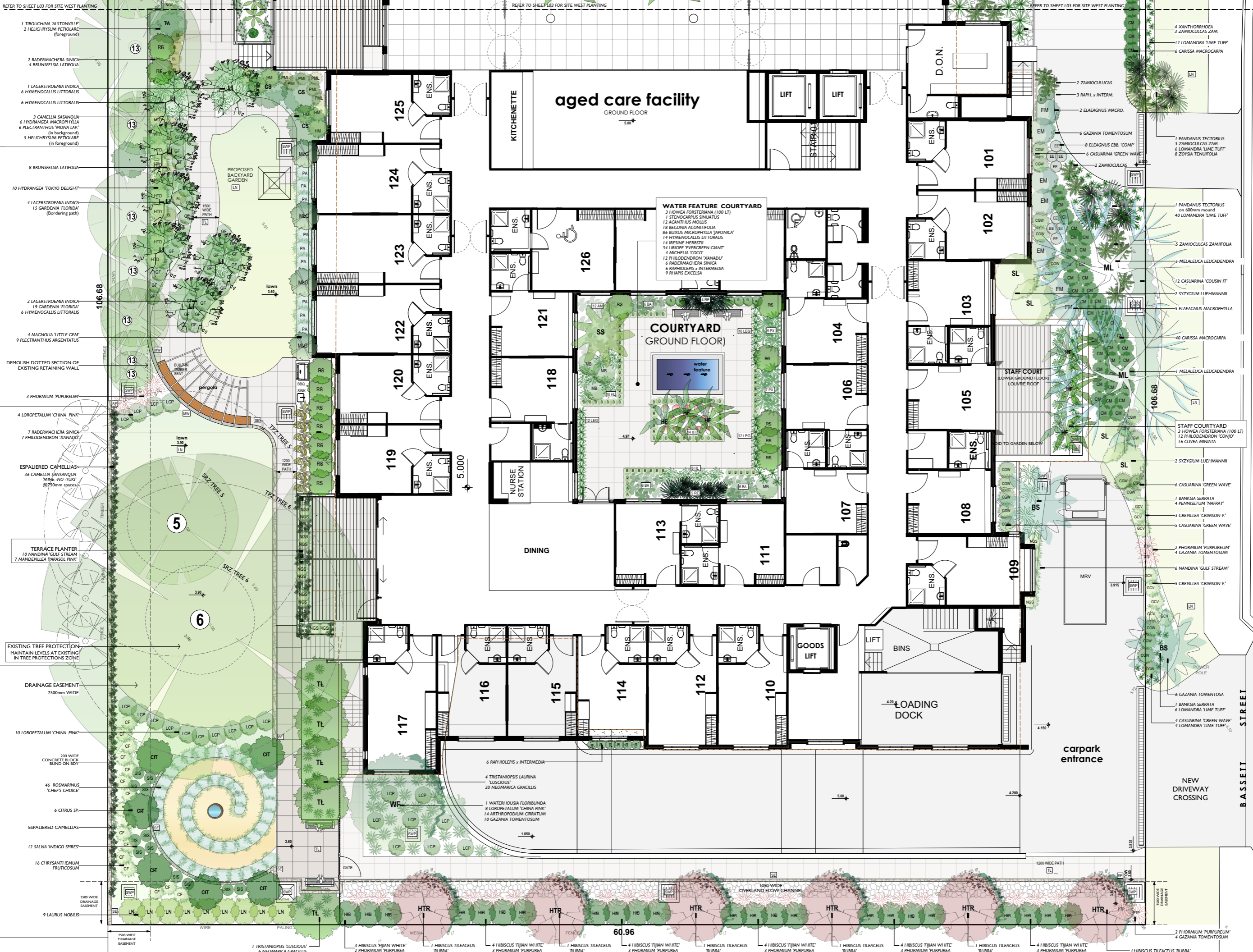
DWG NO
DA-L03



REFER TO SHEET L04 FOR SITE EAST PLANTING

REFER TO SHEET L04 FOR SITE EAST PLANTING

REFER TO SHEET L04 FOR SITE EAST PLANTING



REFER TO SHEET L03 FOR SITE WEST PLANTING

REFER TO SHEET L03 FOR SITE WEST PLANTING

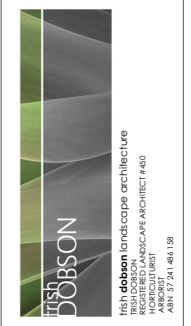
REFER TO SHEET L03 FOR SITE WEST PLANTING

- 1 TIBOUCHINA 'ALSTONVILLE'
- 2 HELICHRYSUM PETIOLARE (foreground)
- 2 RADERMACHERA SINICA
- 4 BRUNSFELSIA LATIFOLIA
- 1 LAGERSTROEMIA INDICA
- 6 HYMENOCALLIS LITTORALIS
- 6 HYMENOCALLIS LITTORALIS
- 3 CAMELLIA SASANQUA
- 6 HYDRANGEA MACROPHYLLA
- 6 FLECTRANTHUS 'MONA LAV.' (in background)
- 5 HELICHRYSUM PETIOLARE (in foreground)
- 8 BRUNSFELSIA LATIFOLIA
- 10 HYDRANGEA 'TOKYO DELIGHT'
- 4 LAGERSTROEMIA INDICA
- 15 GARDENIA 'FLORIDA' (bordering path)
- 2 LAGERSTROEMIA INDICA
- 19 GARDENIA 'FLORIDA'
- 6 HYMENOCALLIS LITTORALIS
- 4 MAGNOLIA 'LITTLE GEM'
- 9 FLECTRANTHUS ARGENTATUS
- DEMOLISH DOTTED SECTION OF EXISTING RETAINING WALL
- 3 PHORMIUM 'PURPUREUM'
- 4 LOROPETALUM 'CHINA PINK'
- 7 RADERMACHERA SINICA
- 7 PHILODENDRON 'KANADU'
- ESPALIERED CAMELLIAS
- 36 CAMELLIA SASANQUA 'MINE-NO-TUKI' @ 700mm spacing
- TERRACE PLANTER
- 10 NANDINA 'GULF STREAM'
- 7 MANDEVILLEA 'PARASOL PINK'
- EXISTING TREE PROTECTION MAINTAIN LEVELS AT EXISTING IN TREE PROTECTIONS ZONE
- DRAINAGE EASEMENT 2500mm WIDE
- 10 LOROPETALUM 'CHINA PINK'
- 220 WIDE CONCRETE BLOCK BUND ON BDT
- 46 ROSMARINUS 'CHEF'S CHOICE'
- 6 CITRUS SP.
- ESPALIERED CAMELLIAS
- 12 SALVIA 'INDIGO SPIRES'
- 16 CHRYSANTHEMUM FRUTICOSUM
- 9 LAURUS NOBILIS
- 1 TRISTANIOPSIS 'LUSCIOUS'
- 6 NEOMARICA GRACILLIS
- 3 HIBISCUS 'FIJIAN WHITE'
- 2 PHORMIUM 'PURPUREA'
- 1 HIBISCUS TILEACEUS 'RUBRA'
- 4 HIBISCUS 'FIJIAN WHITE'
- 3 PHORMIUM 'PURPUREA'
- 1 HIBISCUS TILEACEUS 'RUBRA'
- 4 HIBISCUS 'FIJIAN WHITE'
- 3 PHORMIUM 'PURPUREA'
- 1 HIBISCUS TILEACEUS 'RUBRA'
- 4 HIBISCUS 'FIJIAN WHITE'
- 3 PHORMIUM 'PURPUREA'
- 1 HIBISCUS TILEACEUS 'RUBRA'
- 4 HIBISCUS 'FIJIAN WHITE'
- 3 PHORMIUM 'PURPUREA'
- 1 HIBISCUS TILEACEUS 'RUBRA'
- 2 PHORMIUM 'PURPUREUM'
- 4 GAZANIA TOMENTOSUM

BASSETT STREET

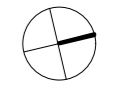
NOTE:
REFER TO SHEET L03 FOR PLANTING DETAILS WESTERN PORTION OF SITE.
REFER TO SHEET L05 FOR FULL PLANTING SCHEDULE

AMENDMENTS



High Dobson Landscape Architecture
348 MARINE PARADE, AVALON, NSW 2107
0408 983020
info@highdobson.com.au

© HIGH DOBSON LANDSCAPE ARCHITECTURE
BUILDER TO CHECK ALL DIMENSIONS PRIOR TO CONSTRUCTION.
WHERE ANY DISCREPANCY EXISTS BETWEEN DIMENSIONS AND DIMENSIONS, THE FIGURED DIMENSIONS SHALL PREVAIL.



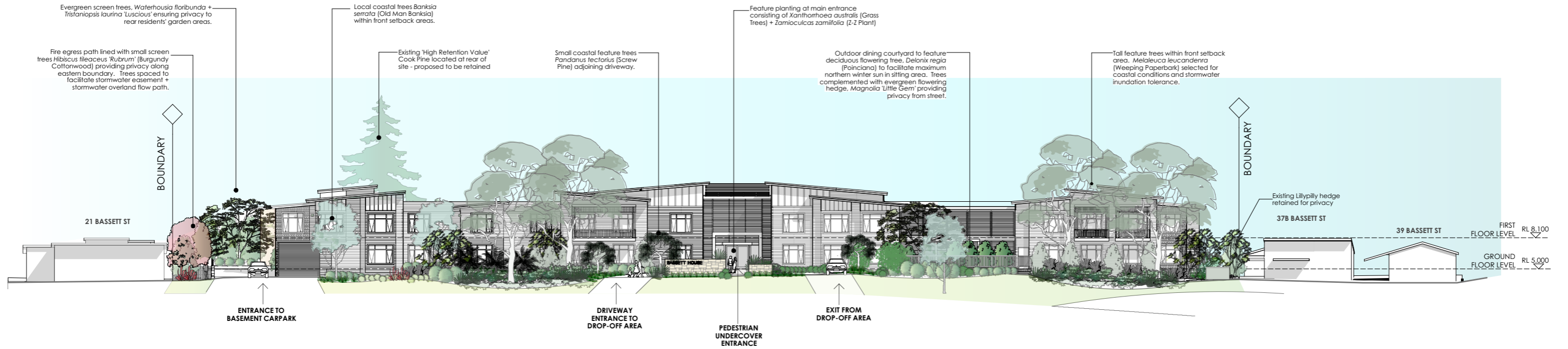
CLIENT
Thompsons Health Care

PROJECT
AGED CARE FACILITY
23 + 33 BASSETT STREET
MONA VALE

DRAWING
PLANTING PLAN EAST

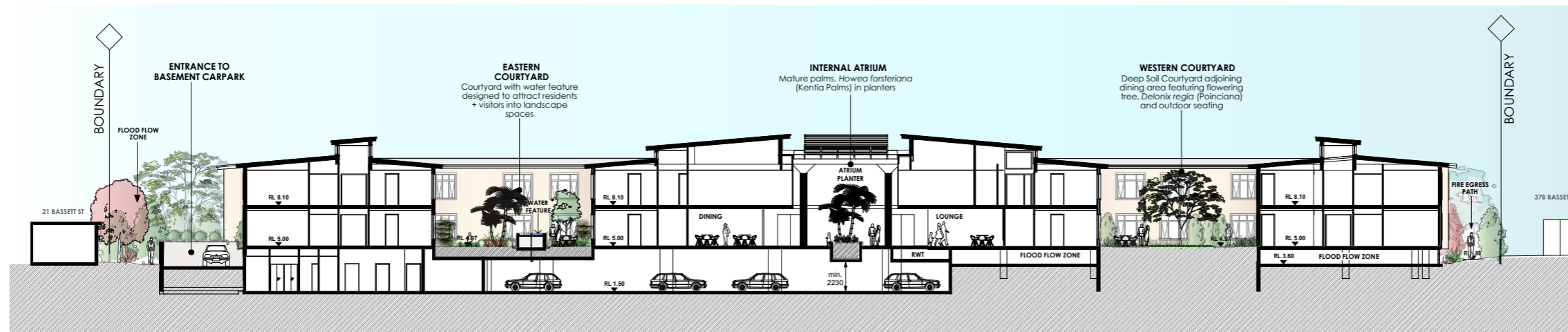
SCALE 1:100/BA1
DATE 24.3.20
ISSUE DA
SHEET 4 OF 6

JOB **2003**
DWG NO. **DA-L04**



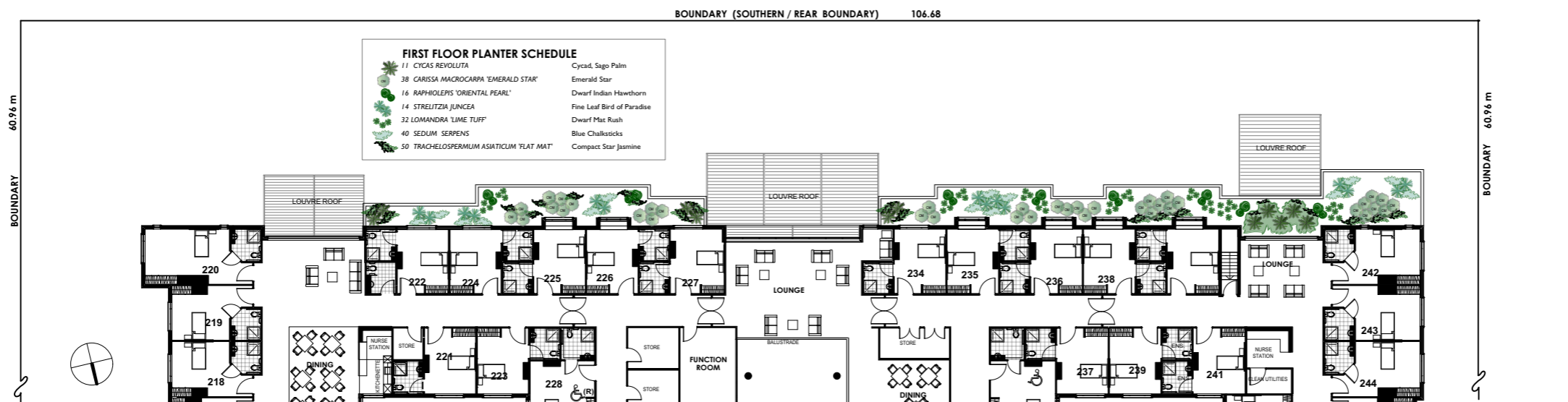
BASSETT STREET FRONT ELEVATION (NORTH)

SCALE 1:200 @ A1



LONG SECTION THROUGH SITE

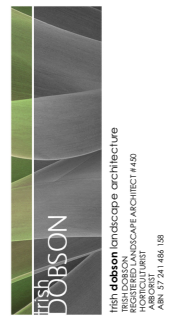
SCALE 1:200 @ A1



PLANTING PLAN - FIRST FLOOR PLANTERS

PLAN SHOWS REAR (SOUTHERN) PORTION OF SITE
SCALE 1:200 @ A1

AMENDMENTS



Irish dobson landscape architecture
348 HARRING PARADE, AVALON, NSW 2107
0428 983002
iris@irishdobson.com.au

© IRISH DOBSON LANDSCAPE ARCHITECTURE
BUILD TO ORDER ALL DIMENSIONS PRIOR TO
CONSTRUCTION
RESERVE ANY DISCREPANCY ERRORS BETWEEN
FIGURES AND SCHEDULES OVERRULING THE FIGURED
DIMENSIONS SHALL PREVAIL.

CLIENT
Thompsons Health Care

PROJECT
AGED CARE FACILITY
23 + 33 BASSETT ST
MONA VALE

DRAWING
**ELEVATION
SECTION
FIRST FLOOR PLANTER**

SCALE 1:200 @ A1
DATE 24.3.20
ISSUE DA
SHEET 8 of 8

JOB
2003

DWG NO
DA-L06