

DATE	DETAILS OF ALTERNATIONS	OWN	DATE	CD
0	UPDATED AND ISSUED FOR MANUFACTURE	M.Z.	17-10-13	DFW
1	STORAGE VOLUMES REVISED	M.Z.	13-11-13	DFW

HUMECEPTOR COVER
CLASS D
ACCESS CHAMBER CONVERTER SLAB
REFER TO LOCAL DRAWINGS

ACCESS CHAMBER
REFER TO LOCAL DRAWINGS

BYPASS CHAMBER
CONVERTER SLAB
REFER TO HC-CT810-P

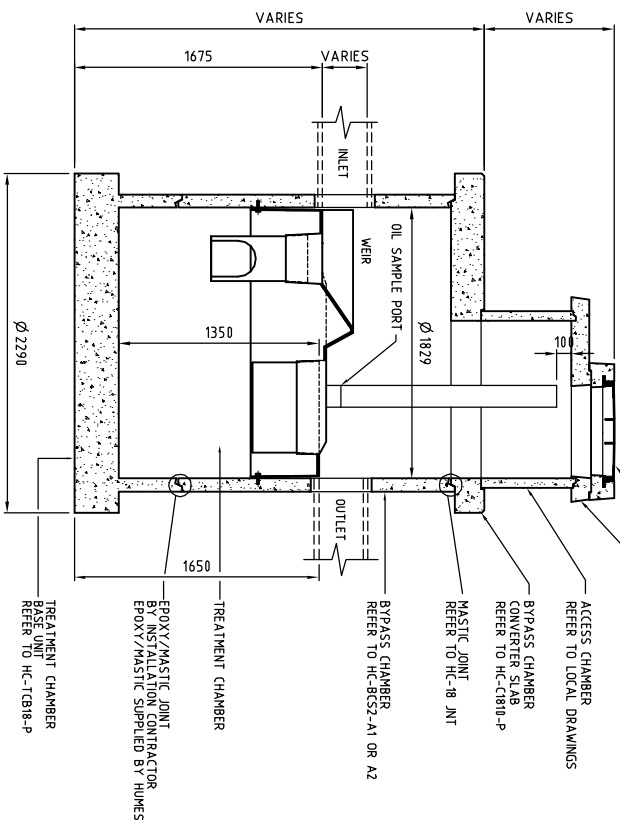
MASTIC JOINT
REFER TO HC-18 JNT

BYPASS CHAMBER
REFER TO HC-BC52-A1 OR A2

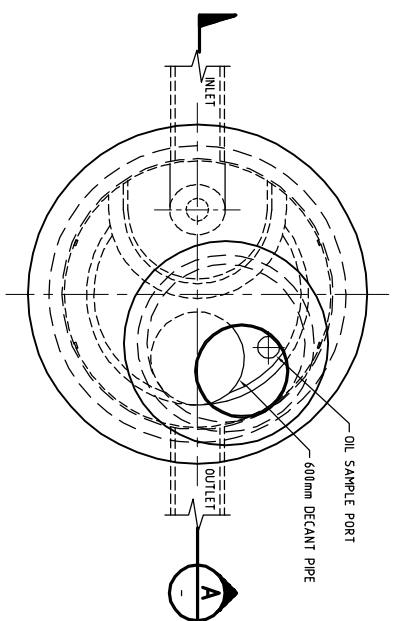
TREATMENT CHAMBER

EPOXY/MASTIC JOINT
BY INSTALLATION CONTRACTOR
EPOXY/MASTIC SUPPLIED BY HUMES

TREATMENT CHAMBER
BASE UNIT
REFER TO HC-TCB18-P



SECTION A-A
SCALE 1:25



PLAN
SCALE 1:25

NOTES:

1. TYPICAL ASSEMBLY DETAIL ONLY - REFER TO PROJECT DRAWING FOR ACTUAL REQUIREMENTS
2. DIMENSIONS INCLUDED ARE STANDARD
3. STORAGE VOLUMES
TOTAL 3540 LITRES
OIL STORAGE VOLUME = 1020 LITRES
SEDIMENT STORAGE VOLUME = 2200 LITRES
4. COMPONENT MASSES
TREATMENT CHAMBER BASE UNIT (INCL. SHAFT) = 3.9 TONNE
BYPASS CHAMBER = VARIES
BYPASS CHAMBER CONVERTER SLAB = 1.9 TONNE
BYPASS CHAMBER CONVERTER SLAB = 1.9 TONNE
FOR FIBREGLASS INSERT.
5. REFER TO BYPASS CHAMBER ASSEMBLY DRAWING FOR FINING DETAILS
6. BYPASS CHAMBER CONVERTER SLAB TO SUIT LOCAL ACCESS CHAMBER UNITS.
7. FOR INLET AND OUTLET PIPE CONNECTION DETAILS
REFER HC-BC52-A1 OR A2 AND KOP-N-SEAL INSTALLATION INSTRUCTIONS
8. SWIFTLIFT LIFTING ANCHORS PROVIDED FOR LIFTING ALL COMPONENTS (REFER PRODUCT DRAWING)
9. NOTE MARKINGS - INLET & OUTLET OVER EACH
10. JOINT SEALANT AS PER MANUFACTURERS RECOMMENDATIONS.
11. OIL SAMPLE PORT AND DECANT PIPE TO BE VISIBLE AS PER PLAN VIEW.

Humes TECHNICAL (DESIGN) SERVICES
BIRKENHEAD, GUILDFORD



Humes Building Pty Limited ABN 67 097 131 271

PRIVATE DESIGN: This drawing remains, at all times, the property of Humes Building Pty Limited and is subject to local laws and regulations. It is not to be used, copied, or communicated in any form or by any means without permission of Humes Building Pty Limited.

2003

©

1:25

A2

HC-STC3-A

1

1

1

1

1

1

1