

Hills Marketplace

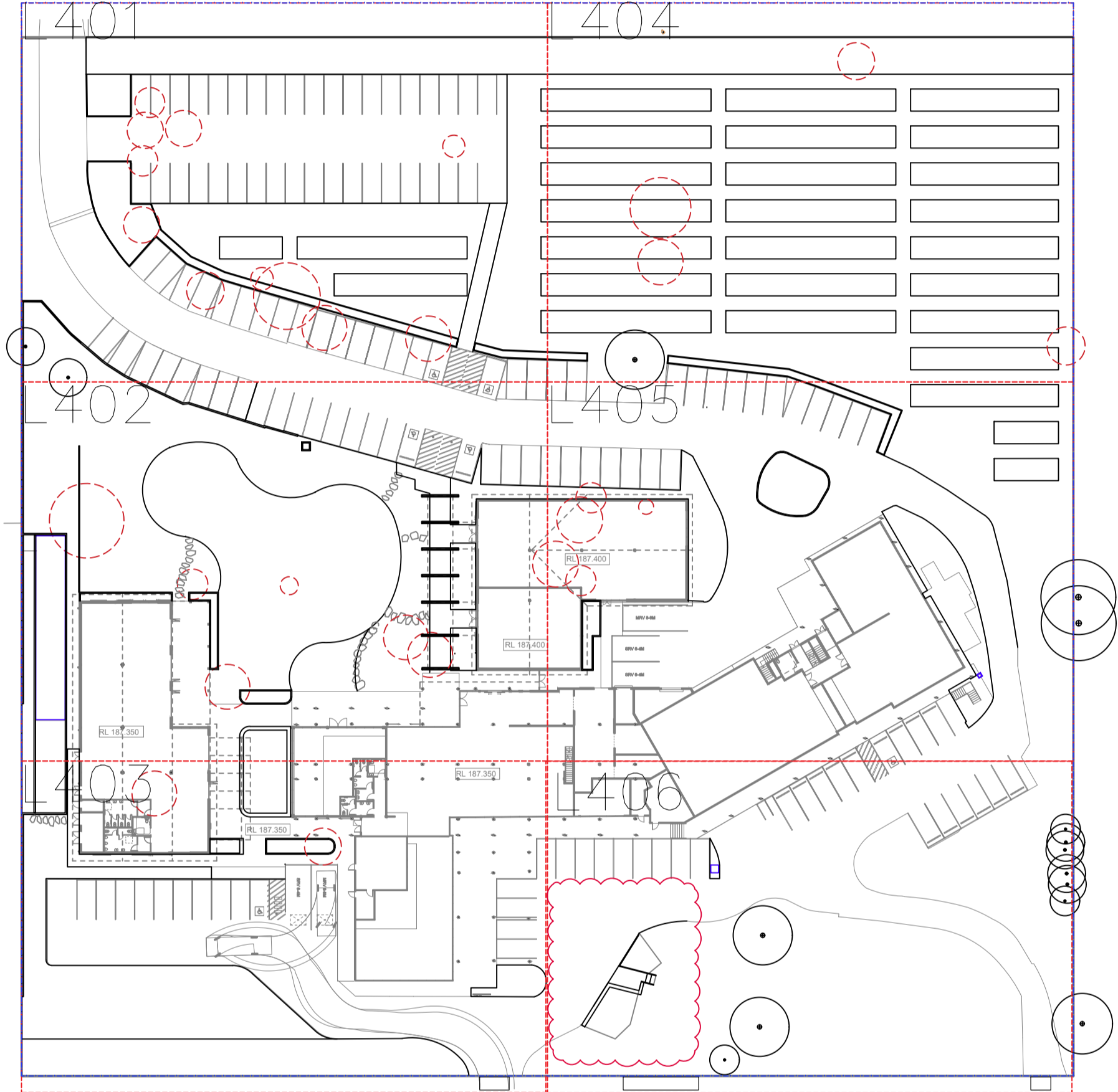
287 Mona Vale Rd, Terrey Hills, NSW

Copyright remains the property of Arcadia Design Group Pty Ltd. Use only figured dimensions. Any other required dimensions are to be referred to and supplied by the landscape architect. All discrepancies to be referred to the project manager and Arcadia Design Group Pty Ltd prior to construction. Ensure compliance with the Building Code of Australia and all relevant Australian Standards and Authority requirements.

DRAWING SCHEDULE

DRAWING NO.	DRAWING TITLE
000	COVER SHEET
101	LANDSCAPE MASTERPLAN
400	PLANTING SCHEDULE
401	SOFTWORKS PLAN
402	SOFTWORKS PLAN
403	SOFTWORKS PLAN
404	SOFTWORKS PLAN
405	SOFTWORKS PLAN
406	SOFTWORKS PLAN
601	TYPICAL DETAILS
701	LANDSCAPE NOTES

KEY PLAN



Issue	Revision Description	Drawn	Check	Date
E	DA Submission	RC	NW	21.11.23
D	DA Submission	RC	NW	09.06.23
C	DA Submission	RC	NW	14.04.23
B	DA Submission	JT	NW	12.10.22
A	Draft Issue	JT	NW	23.09.22

Not for Construction

Project
Hills Marketplace

Development Application

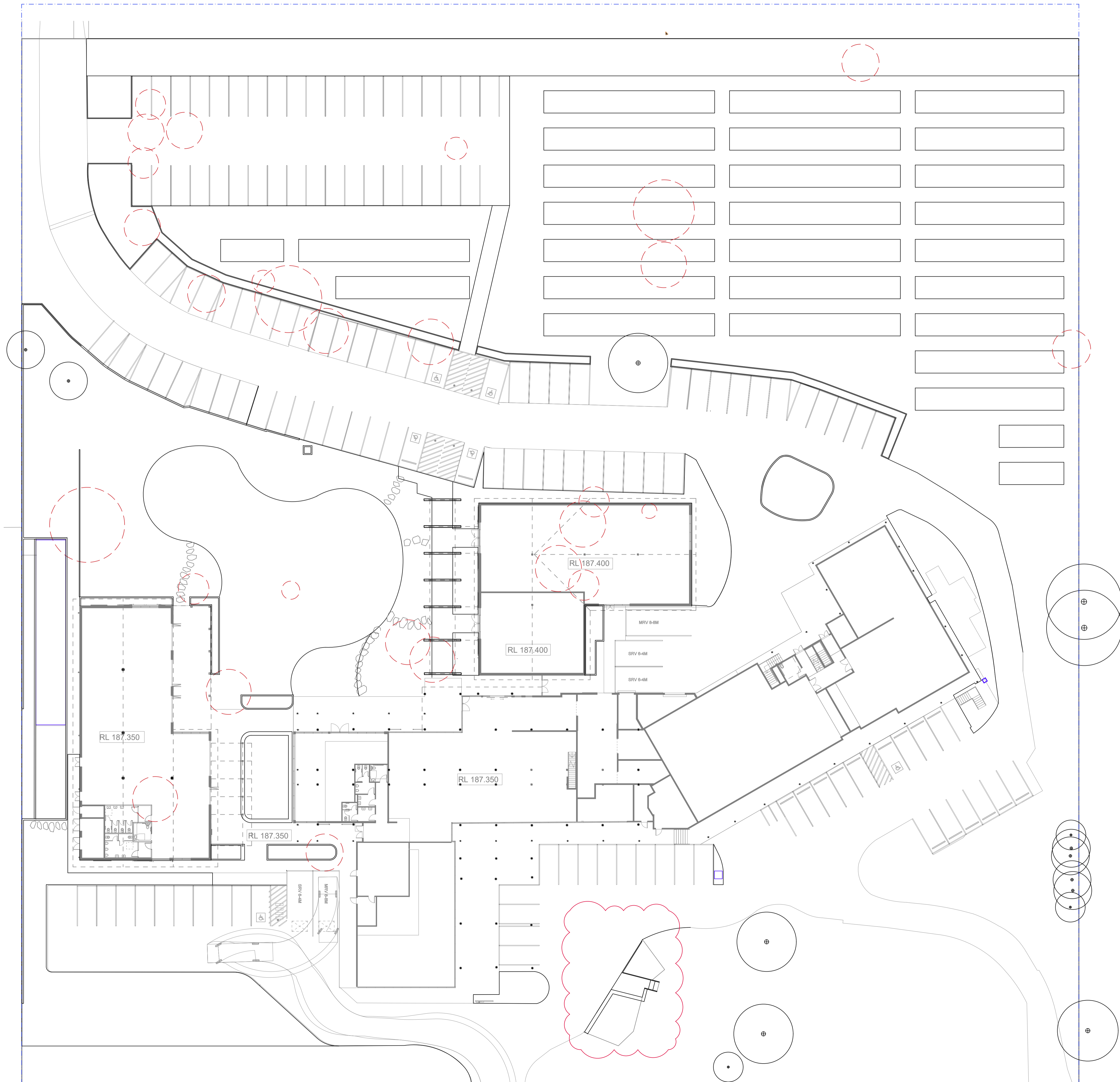


Drawing No. L000 Drawing Name Cover sheet

Job No. 22-839 Issue E Scale NTS

Sydney, Suite 76, Jones Bay Wharf, 26-32 Pirrama Road, Pymont NSW 2009
Brisbane, Suite 56, 232 Adelaide Street, Brisbane QLD 4000
E sydney@arcadiala.com.au T 02 8571 2900
E brisbane@arcadiala.com.au T 07 3071 8000





Issue	Revision	Description	Drawn	Check	Date
E	DA Submission	RC	NW		21.11.23
D	DA Submission	RC	NW		09.06.23
C	DA Submission	RC	NW		14.04.23
B	DA Submission	JT	NW		12.10.22
A	Draft Issue	JT	NW		23.09.22

Not for Construction

Project
Hills Marketplace

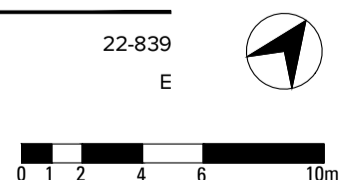
Development Application

Client



Drawing No. L101 Drawing Name Landscape Masterplan

Job No. 22-839
Issue E
Scale 1:250 @ A1



Sydney, Suite 76, Jones Bay Wharf, 26-32 Pirrama Road, Pymont NSW 2009
E sydney@arcadiala.com.au
T 02 8571 2900

Brisbane, Suite 56, 232 Adelaide Street, Brisbane QLD 4000
E brisbane@arcadiala.com.au
T 07 3071 8000



22-839 HILLS MARKETPLACE							
CODE	BOTANIC NAME	COMMON NAME	MATURE SIZE (h x w) (m)	PROPOSED POT SIZE	QUANTITY	NATIVE	EXOTIC
TREES							
Ae	<i>Alphitonia excelsa</i>	Red Ash	15 x 8	75L	2	x	
As	<i>Acacia longifolia</i>	Sydney Golden Wattle	8 x 6	75L	1	x	
Ca	<i>Ceratopetalum apetalum</i>	Coachwood	15 x 6	75L	1	x	
Lc	<i>Lophostemon confertus</i>	Brush Box	15 x 10	75L	1	x	
Be	<i>Banksia ericifolia</i>	Heath-leaved Banksia	6 x 4	75L	3	x	
Gf	<i>Glochidion ferdinandi</i>	Cheese Tree	15 x 8	75L	3	x	
Sg	<i>Syncarpia glommulifera</i>	Turpentine Tree	20 x 12	75L	1	x	
Ti	<i>Tristaniaopsis laurina</i>	Water Gum	9 x 7	75L	3	x	
SHRUBS & ACCENTS							
Ac	<i>Adenanthos cunninghamii</i>	Woolly Bush	1.5 x 1.5	140mm	32	x	
Br	<i>Banksia robur</i>	Swamp Banksia	1.5 x 2	140mm	14	x	
Bs	<i>Banksia spinulosa</i> 'Birthday Candles'	Banksia	0.5 x 1	140mm	95	x	
Cij	<i>Callistemon Little John</i>	Callistemon 'Little John	1 x 1	140mm	40	x	
Cc	<i>Callistemon citrinus</i>	Crimson Bottlebrush	4 x 2	140mm	10	x	
Gb	<i>Grevillea buxifolia</i>	Grey spider flower	2 x 1	140mm	39	x	
De	<i>Doryanthes excelsa</i>	Gynea Lily	1.5 x 2	300mm	2	x	
Pf	<i>Pultenaea flexilis</i>	Graceful Bush-pea	4 x 3	140mm	14	x	
Lp	<i>Leucadendron Pisa</i>	Leucadendron Ebony	1.5 x 2	140mm	22	x	
Lrd	<i>Leucadendron red devil</i>	Protea red devil	1.5 x 1	140mm	150	x	
Ss	<i>Syzygium smithii</i>	Lilly Pilly	4 x 2	140mm	44	x	
Rdi	<i>Rhaphiolepis delacouri</i> x <i>indica</i> 'apple blossom'	Indian Hawthorn Apple Blossom	1 x 2	140mm	15		x
Bl	<i>Baeckea Linifolia</i>	Swamp Baeckea	3 x 3	140mm	23	x	
Wf	<i>Westringia fruticosa</i>	Coast Rosemary	1.5 x 1.5	140mm	156	x	
Wgb	<i>Westringia grey box</i>	Compact Coastal Rosemary	0.45 x 0.45	140mm	142	x	
Xs	<i>Xanthorrhoea spp.</i>	Grass Tree	2 x 1.5	140mm	3	x	
GROUNDCOVERS							
An	<i>Anigozanthos flavidus</i>	Kangaroo Paw	1.5 X 1	TUBE STOCK	630	x	
Cg	<i>Casuarina glauca</i> "Cousin It"	She-oak	0.15 x 1.5	TUBE STOCK	200	x	
DI	<i>Dianella longifolia</i>	Blue Flax Lily	1 x 1.5	TUBE STOCK	647	x	
La	<i>Lavandula angustifolia</i>	Lavender	0.5 x 0.5	TUBE STOCK	522		x
Lhs	<i>Lomandra hystrix</i>	Mat Rush	1.2 x 1	TUBE STOCK	245	x	
Lcr	<i>Lomandra confertifolia</i> ssp. <i>Rubiginosa</i>	Lomandra Frosty Top	0.7 x 0.5	TUBE STOCK	1,210	x	
Lm	<i>Liriope muscari</i>	Mondo Grass	0.4 x 0.45	TUBE STOCK	420		x
Mp	<i>Myoporum parvifolium</i>	Creeping Boobialla	0.5 x spreading	TUBE STOCK	212	x	
Pl	<i>Poa labillardieri</i>	Tussock Grass	1.2 x 0.5	TUBE STOCK	142	x	
Pa	<i>Pennisetum alopecuroides</i> Nafray	Swamp Foxtail Grass	0.5 x 0.6	TUBE STOCK	1375	x	
Ro	<i>Rosmarinus officinalis prostratus</i>	Creeping Rosemary	0.3 x 0.6	TUBE STOCK	150	x	
Sr	<i>Salvia rosmarinus</i>	Rosemary Officinalis prostrate	0.25 x 1.5	TUBE STOCK	424		x
CLIMBERS							
Hs	<i>Hibbertia scandens</i>	Snake Vine	0.3 x 2	TUBE STOCK	90	x	
Pj	<i>Pandorea jasminoides</i> 'Lady Di'	Pandorea	0.2 X spreading	TUBE STOCK	30	x	
Tj	<i>Trachelospermum jasminoides</i>	Star Jasmine	0.6 x 2	TUBE STOCK	72		x
BIO RETENTION MIX							
Jp	<i>Juncus pallidus</i>	Pale Rush	1 x 0.5	150mm	194	x	
Ca	<i>Carex appressa</i>	Tall Sedge	1.5 x 1.5	150mm	194	x	
Gf	<i>Gahnia filum</i>	Chaffy Saw-sedge	1.5 x 1.5	150mm	194	x	
Pl	<i>Poa labillardieri</i>	Tussock Grass	1.2 x 0.5	150mm	194	x	

Issue	Revision	Description	Drawn	Check	Date
F	DA Submission	RC	NW		19.04.24
E	DA Submission	RC	NW		21.11.23
D	DA Submission	RC	NW		09.06.23
C	DA Submission	RC	NW		14.04.23
B	DA Submission	JT	NW		12.10.22
A	Draft Issue	JT	NW		23.09.22

Not for Construction

Project
Hills Marketplace

Development Application

Client





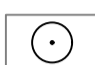



Drawing No. L400 Drawing Name Planting Schedule

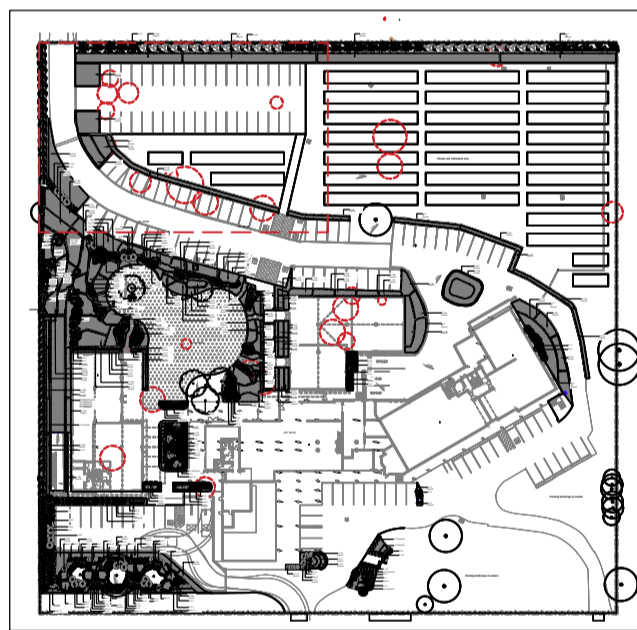
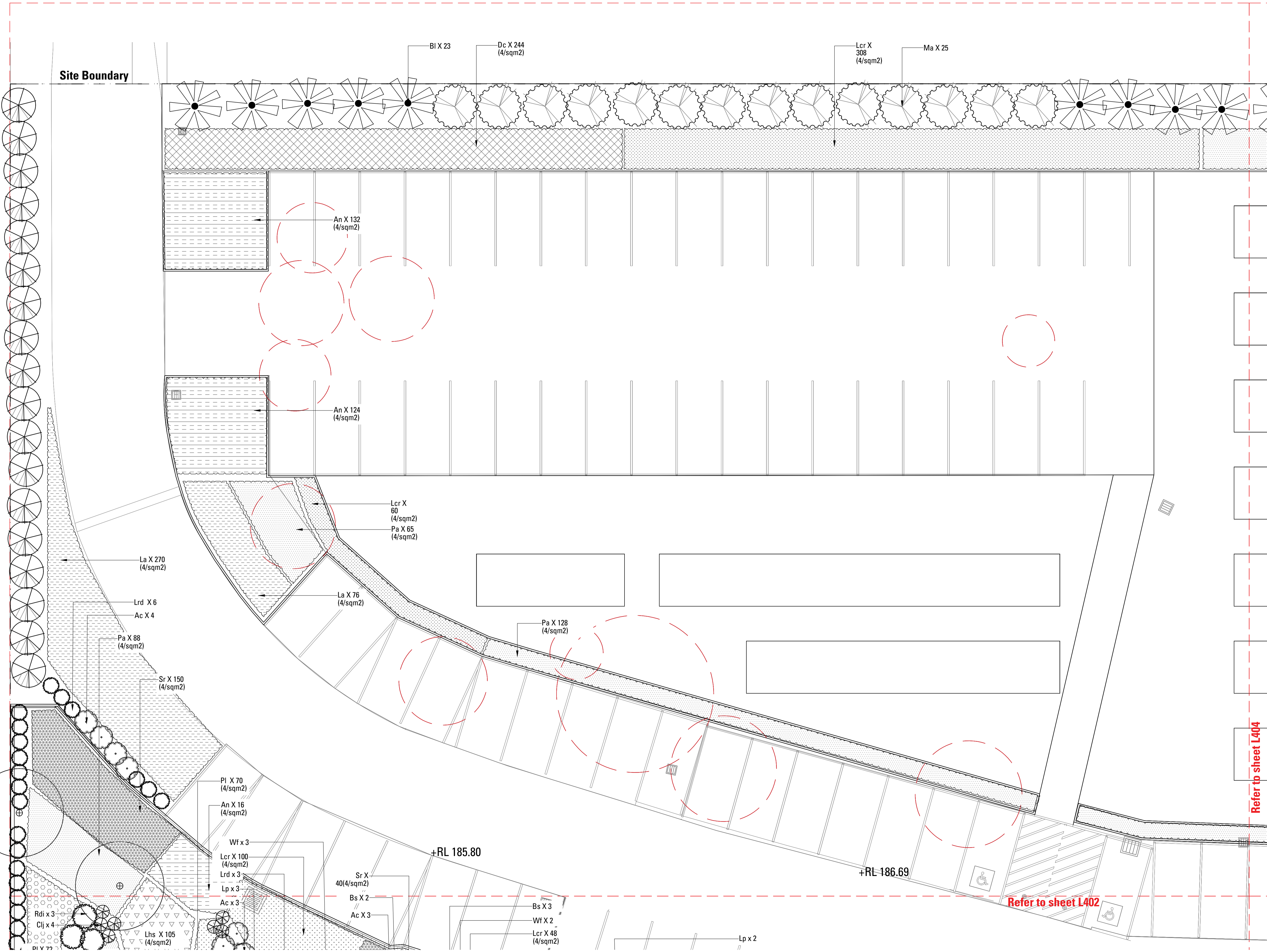
Job No. 22-839
Issue F
Scale

Sydney, Suite 75, Jones Bay Wharf, 26-32 Pirrama Road, Pyrmont NSW 2009
Brisbane, Suite 55, 232 Adelaide Street, Brisbane QLD 4000
E: sydney@arcadia.com.au T: 02 8571 2900
E: brisbane@arcadia.com.au T: 07 3071 8000



LEGEND

-  Proposed Trees
 -  Trees to be removed
 -  Trees to be retained
 -  Turf
- GRADING**
-  REDUCED LEVEL
 -  FINISHED FLOOR LEVEL



F	DA Submission	RC	NW	19.04.24
E	DA Submission	RC	NW	21.11.23
D	DA Submission	RC	NW	09.06.23
C	DA Submission	RC	NW	14.04.23
B	DA Submission	JT	NW	12.10.22
A	Draft Issue	JT	NW	23.09.22
Issue	Revision Description	Drawn	Check	Date

Not for Construction

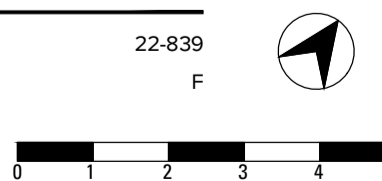
Hills Marketplace

Development Application

Client: 

Drawing No. L401 Drawing Name Softworks Plan

Job No. 22-839 Issue F Scale 1:100 @ A1



Sydney, Suite 76, Jones Bay Wharf, 26-32 Pirrama Road, Pyrmont NSW 2009
 Brisbane, Suite 55, 232 Adelaide Street, Brisbane QLD 4000
 E: sydney@arcadiala.com.au T: 02 8571 2900
 E: brisbane@arcadiala.com.au T: 07 3071 8000



Refer to sheet L404

Refer to sheet L402

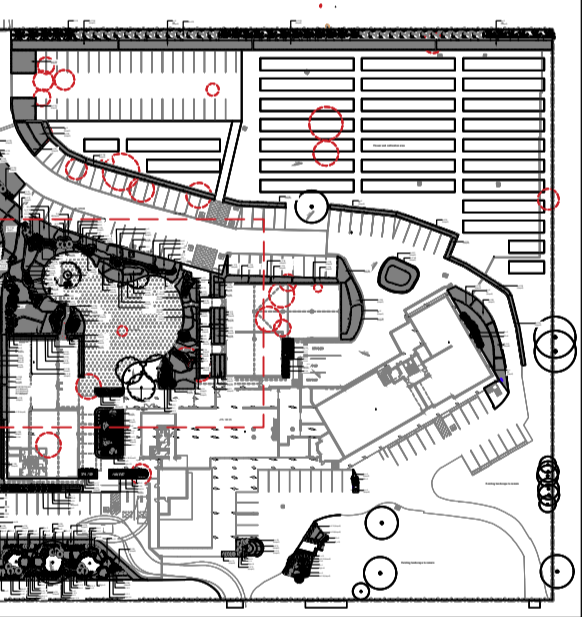
Site Boundary

+RL 185.80

+RL 186.69

LEGEND

- Proposed Trees
 - Trees to be removed
 - Trees to be retained
 - Turf
- GRADING**
- REDUCED LEVEL
 - FINISHED FLOOR LEVEL



Issue	Revision Description	Drawn	Check	Date
F	DA Submission	RC	NW	19.04.24
E	DA Submission	RC	NW	21.11.23
D	DA Submission	RC	NW	09.06.23
C	DA Submission	RC	NW	14.04.23
B	DA Submission	JT	NW	12.10.22
A	Draft Issue	JT	NW	23.09.22

Not for Construction

Hills Marketplace

Development Application

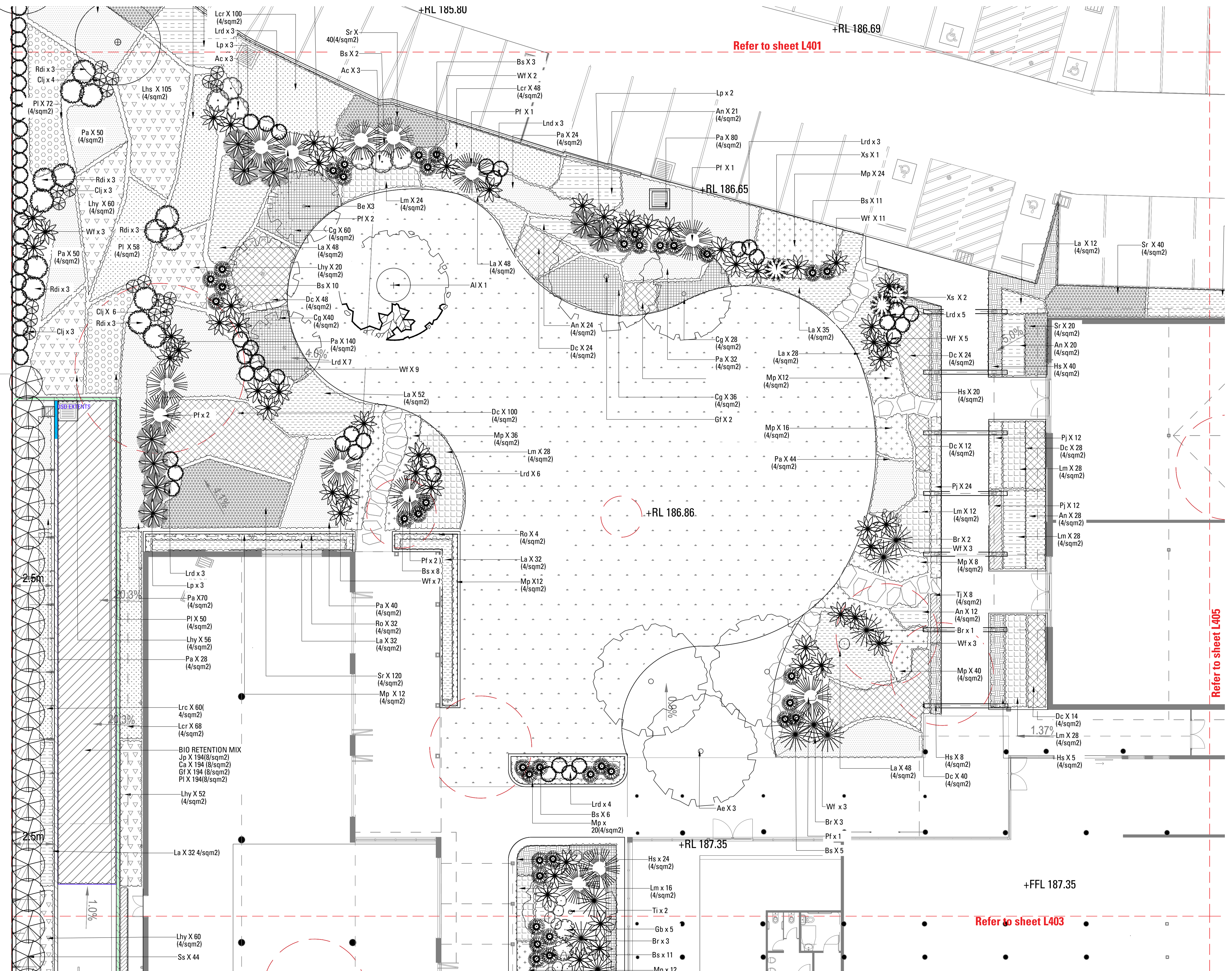
Client



Drawing No. L402 Drawing Name Softworks Plan

Job No. 22-839
 Issue F
 Scale 1:100 @ A1

Sydney, Suite 75, Jones Bay Wharf, 26-32 Pirrama Road, Pyrmont NSW 2009
 Brisbane, Suite 55, 232 Adelaide Street, Brisbane QLD 4000
 E: sydney@arcadia.com.au T: 02 8571 2900
 E: brisbane@arcadia.com.au T: 07 3071 8000



Refer to sheet L405

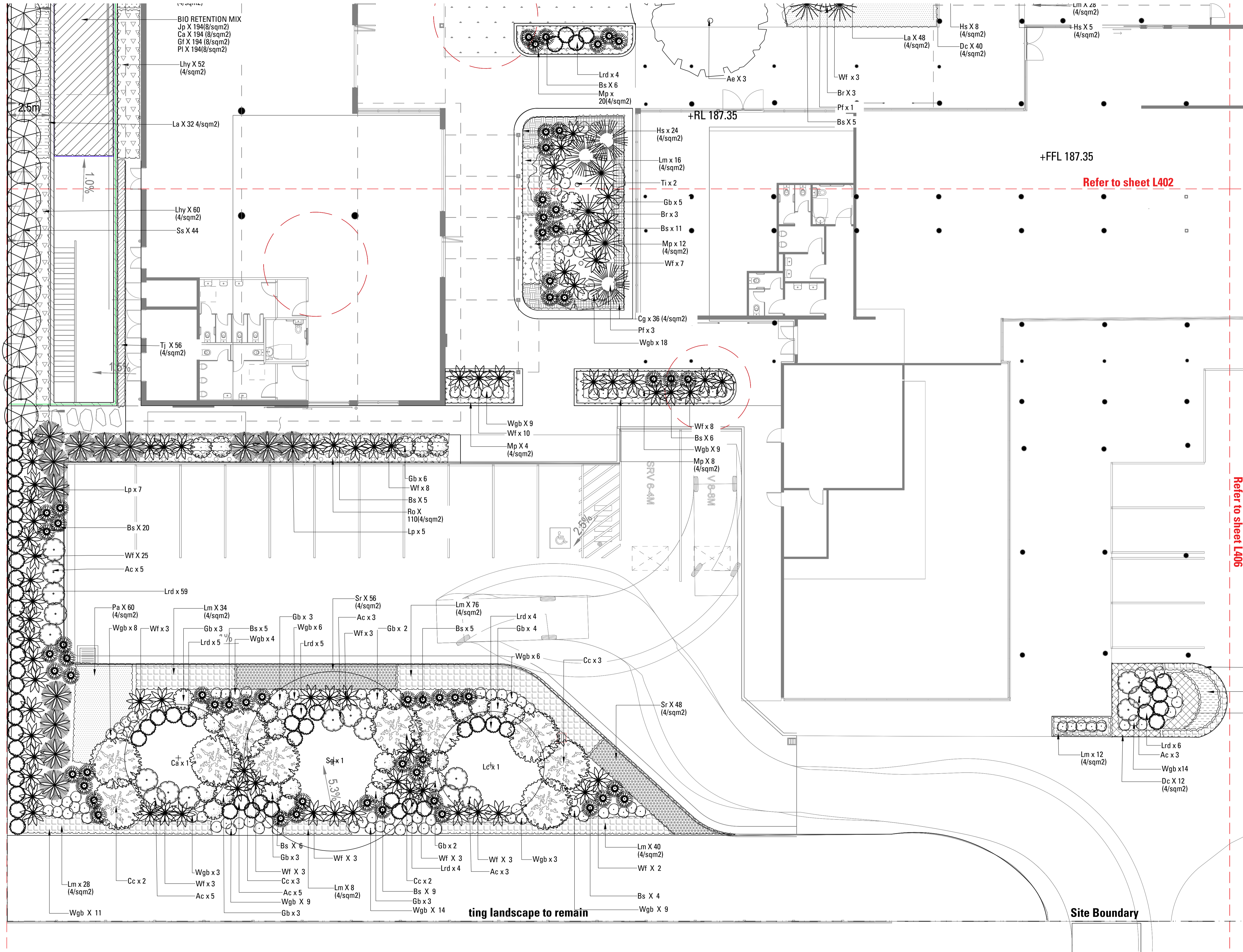
Refer to sheet L403

Copyright remains the property of Arcadia Design Group Pty Ltd. Use only figured dimensions. Any other required dimensions are to be referred to and supplied by the landscape architect. All discrepancies to be referred to the project manager and Arcadia Design Group Pty Ltd prior to construction. Ensure compliance with the Building Code of Australia and all relevant Australian Standards and Authority requirements.

LEGEND

- Proposed Trees
- Trees to be removed
- Trees to be retained
- Turf

- GRADING**
- REDUCED LEVEL
 - FINISHED FLOOR LEVEL

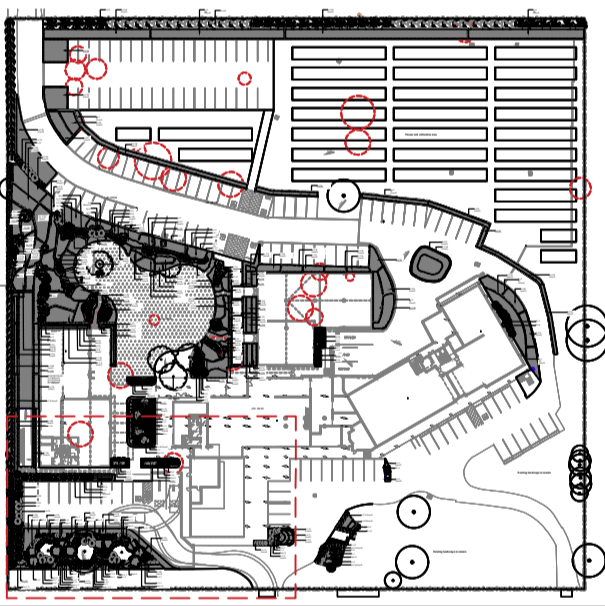


+FFL 187.35

+RL 187.35

Refer to sheet L402

Refer to sheet L406



Issue	Revision Description	Drawn	Check	Date
F	DA Submission	RC	NW	19.04.24
E	DA Submission	RC	NW	21.11.23
D	DA Submission	RC	NW	09.06.23
C	DA Submission	RC	NW	14.04.23
B	DA Submission	JT	NW	12.10.22
A	Draft Issue	JT	NW	23.09.22

Not for Construction

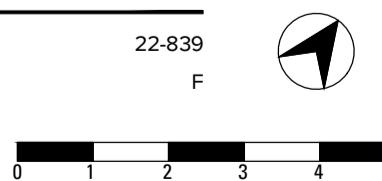
Hills Marketplace

Development Application



Drawing No. L403 Drawing Name Softworks Plan



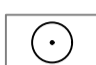



Job No. 22-839
 Issue F
 Scale 1:100 @ A1

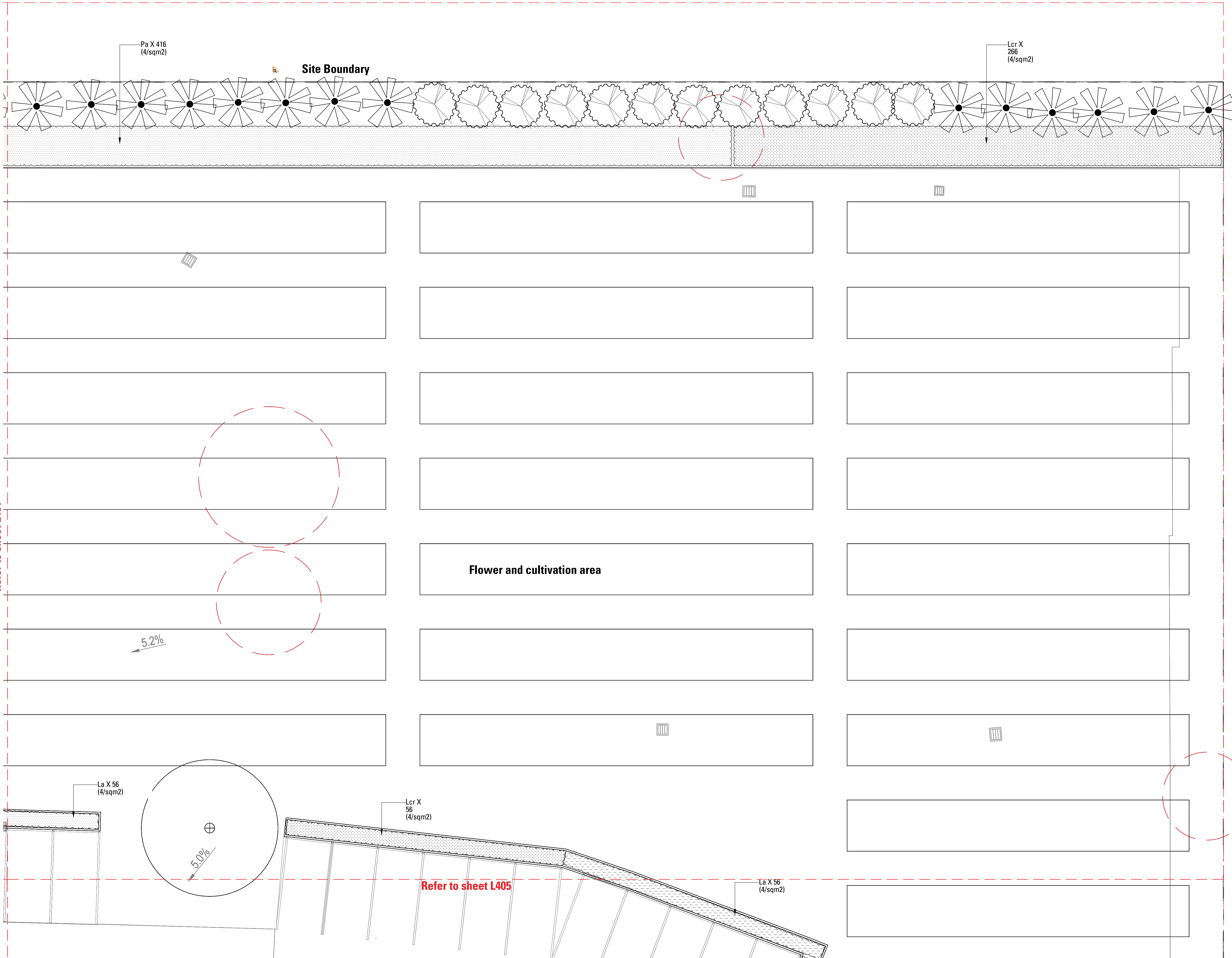


Sydney, Suite 76, Jones Bay Wharf, 26-32 Pirrama Road, Pyrmont NSW 2009
 Brisbane, Suite 56, 232 Adelaide Street, Brisbane QLD 4000
 E: sydney@arcadiala.com.au T: 02 8571 2900
 E: brisbane@arcadiala.com.au T: 07 3071 8000

ARCADIA

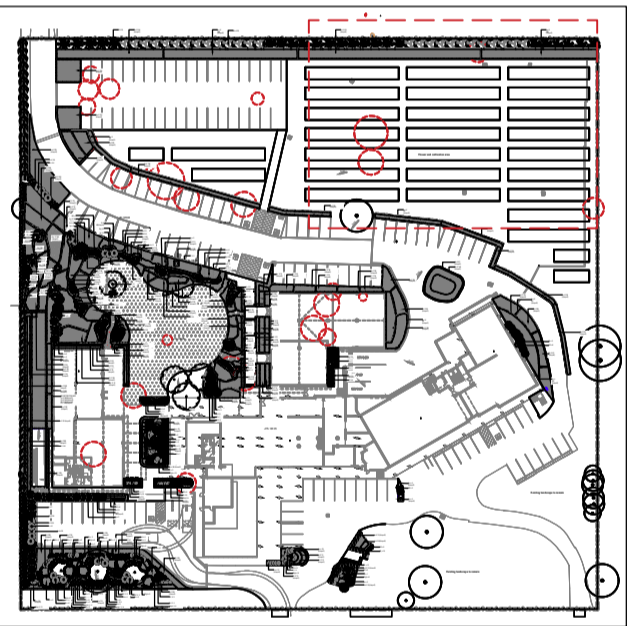
LEGEND

-  Proposed Trees
 -  Trees to be removed
 -  Trees to be retained
 -  Turf
- GRADING**
-  REDUCED LEVEL
 -  FINISHED FLOOR LEVEL



Refer to sheet L401

Refer to sheet L405



Issue	Revision Description	Drawn	Check	Date
F	DA Submission	RC	NW	19.04.24
E	DA Submission	RC	NW	21.11.23
D	DA Submission	RC	NW	09.06.23
C	DA Submission	RC	NW	14.04.23
B	DA Submission	JT	NW	12.10.22
A	Draft Issue	JT	NW	23.09.22

Not for Construction

Hills Marketplace

Development Application

Client



Drawing No. L404 Drawing Name Softworks Plan

Job No. 22-839 Issue F





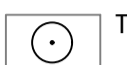



1:100 @ A1

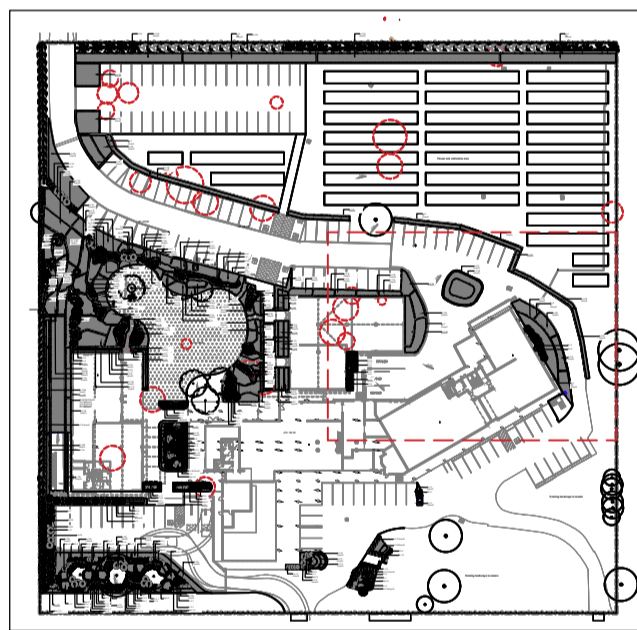
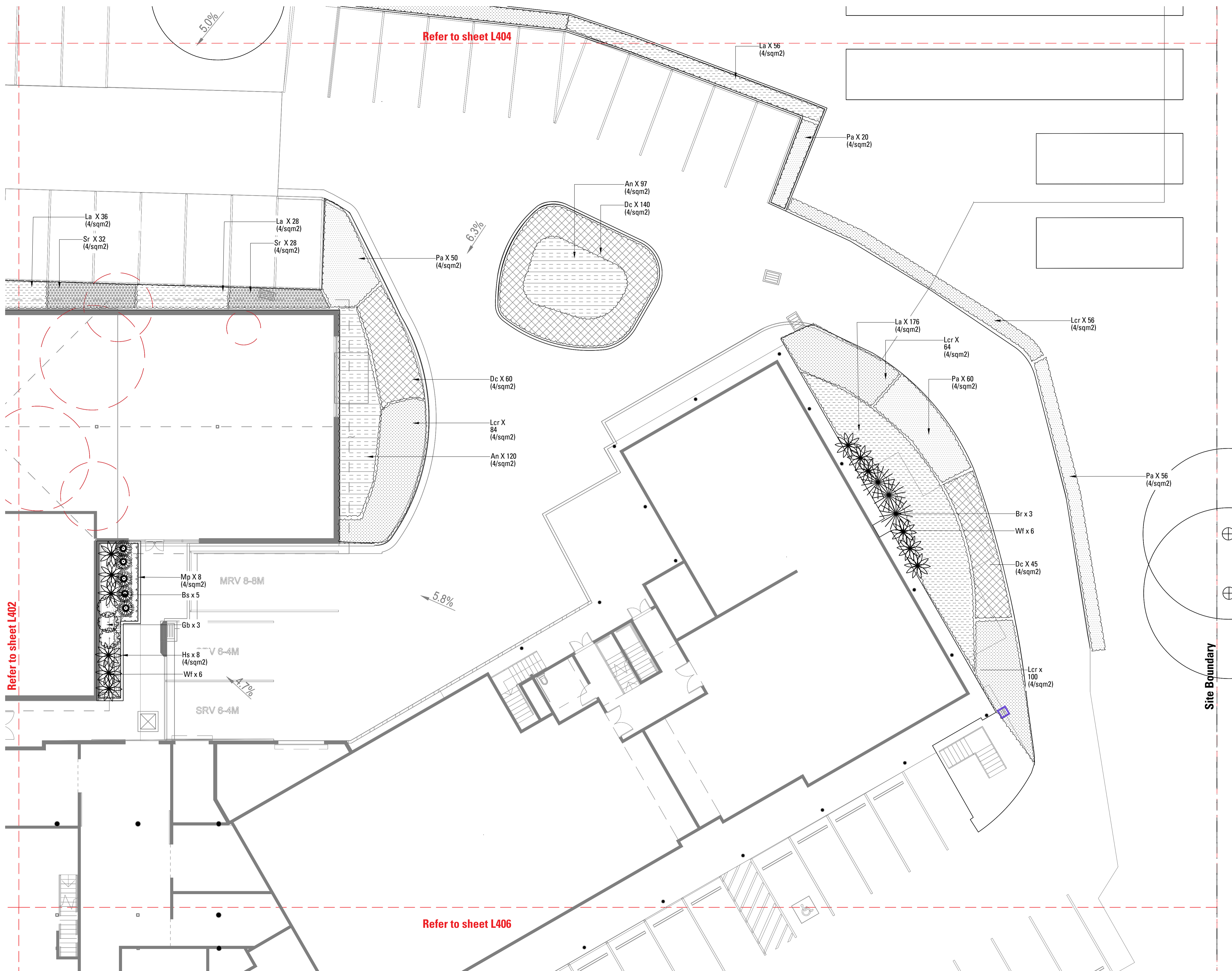
Sydney, Suite 76, Jones Bay Wharf, 26-32 Pirrama Road, Pyrmont NSW 2009
E sydney@arcadiala.com.au T 02 8571 2900

Brisbane, Suite 56, 232 Adelaide Street, Brisbane QLD 4000
E brisbane@arcadiala.com.au T 07 3071 8000



LEGEND

-  Proposed Trees
 -  Trees to be removed
 -  Trees to be retained
 -  Turf
- GRADING**
-  REDUCED LEVEL
 -  FINISHED FLOOR LEVEL



Issue	Revision Description	Drawn	Check	Date
F	DA Submission	RC	NW	19.04.24
E	DA Submission	RC	NW	21.11.23
D	DA Submission	RC	NW	09.06.23
C	DA Submission	RC	NW	14.04.23
B	DA Submission	JT	NW	12.10.22
A	Draft Issue	JT	NW	23.09.22

Not for Construction

Project
Hills Marketplace

Development Application

Client
HILLS
MARKETPLACE



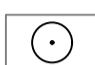



Drawing No. L405 Drawing Name Softworks Plan

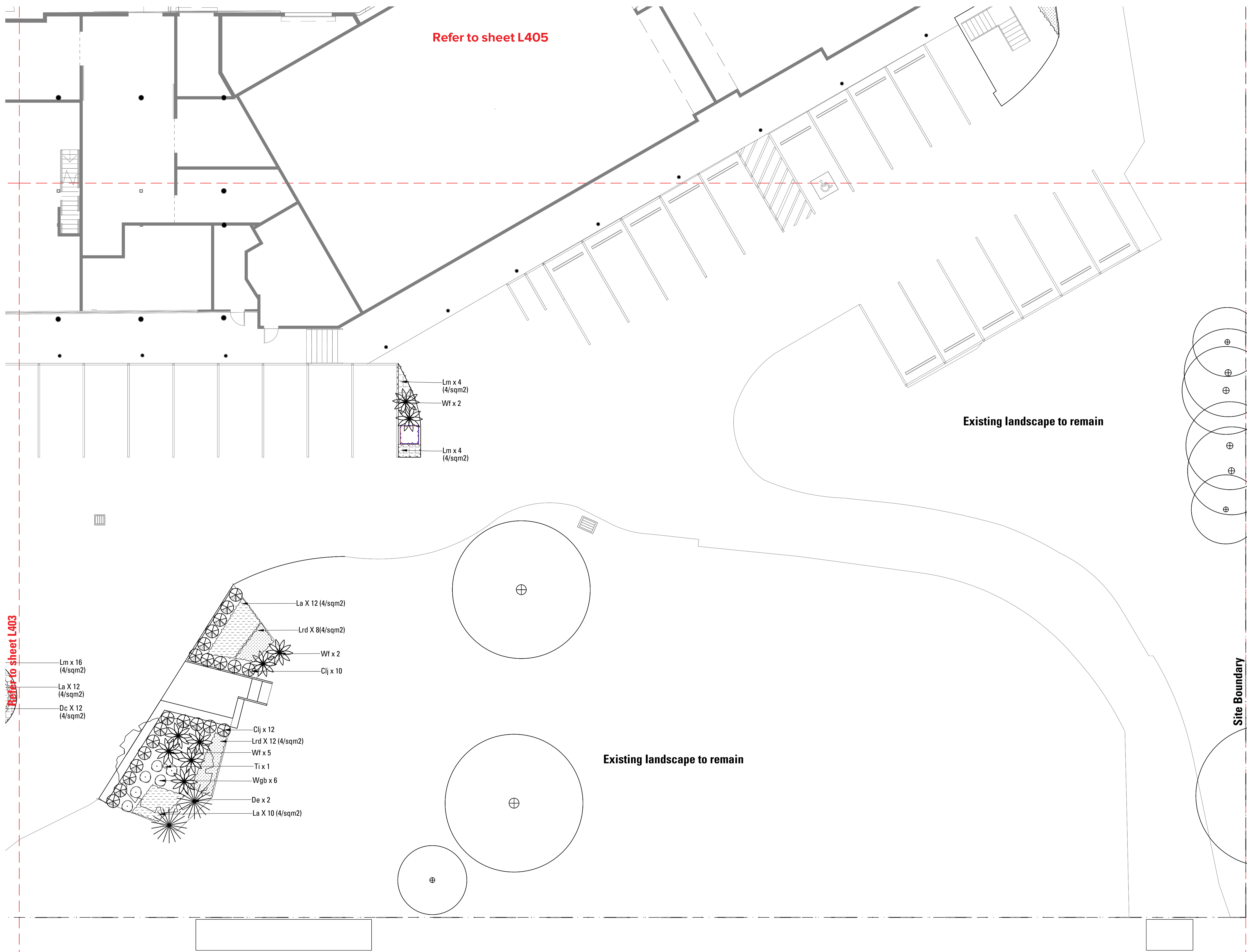
Job No. 22-839 Issue F Scale 1:100 @ A1

Sydney, Suite 76, Jones Bay Wharf, 26-32 Pirrama Road, Pyrmont NSW 2009
Brisbane, Suite 56, 232 Adelaide Street, Brisbane QLD 4000
E: sydney@arcadiala.com.au T: 02 8571 2900
E: brisbane@arcadiala.com.au T: 07 3071 8000



LEGEND

-  Proposed Trees
 -  Trees to be removed
 -  Trees to be retained
 -  Turf
- GRADING**
-  REDUCED LEVEL
 -  FINISHED FLOOR LEVEL

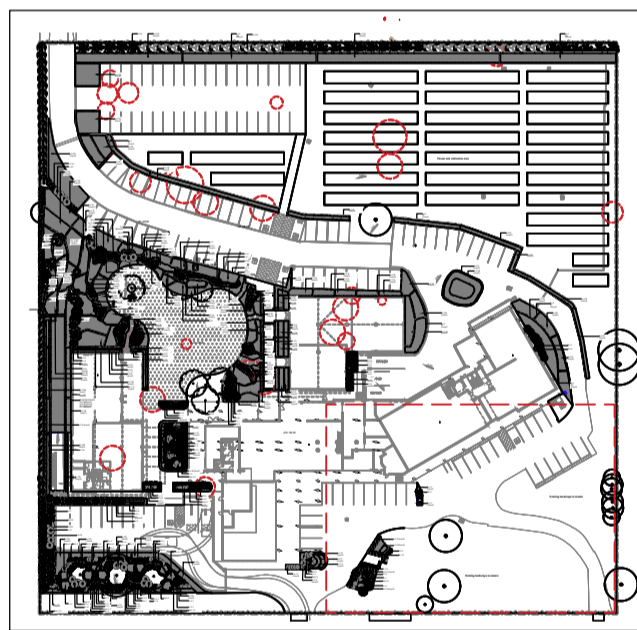
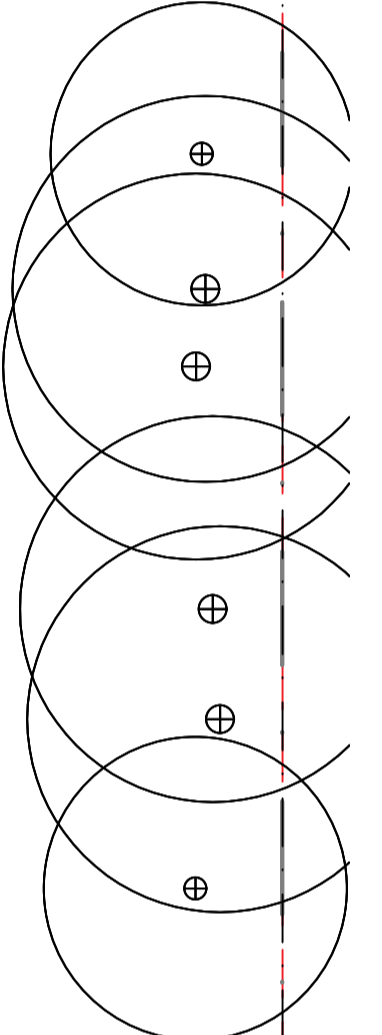


Refer to sheet L405

Existing landscape to remain

Existing landscape to remain

Refer to sheet L403



Site Boundary

Issue	Revision Description	Drawn	Check	Date
F	DA Submission	RC	NW	19.04.24
E	DA Submission	RC	NW	21.11.23
D	DA Submission	RC	NW	09.06.23
C	DA Submission	RC	NW	14.04.23
B	DA Submission	JT	NW	12.10.22
A	Draft Issue	JT	NW	23.09.22

Not for Construction

Project
Hills Marketplace

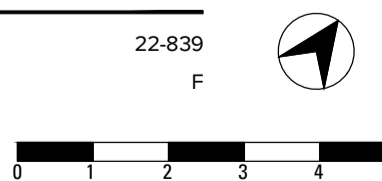
Development Application

Client



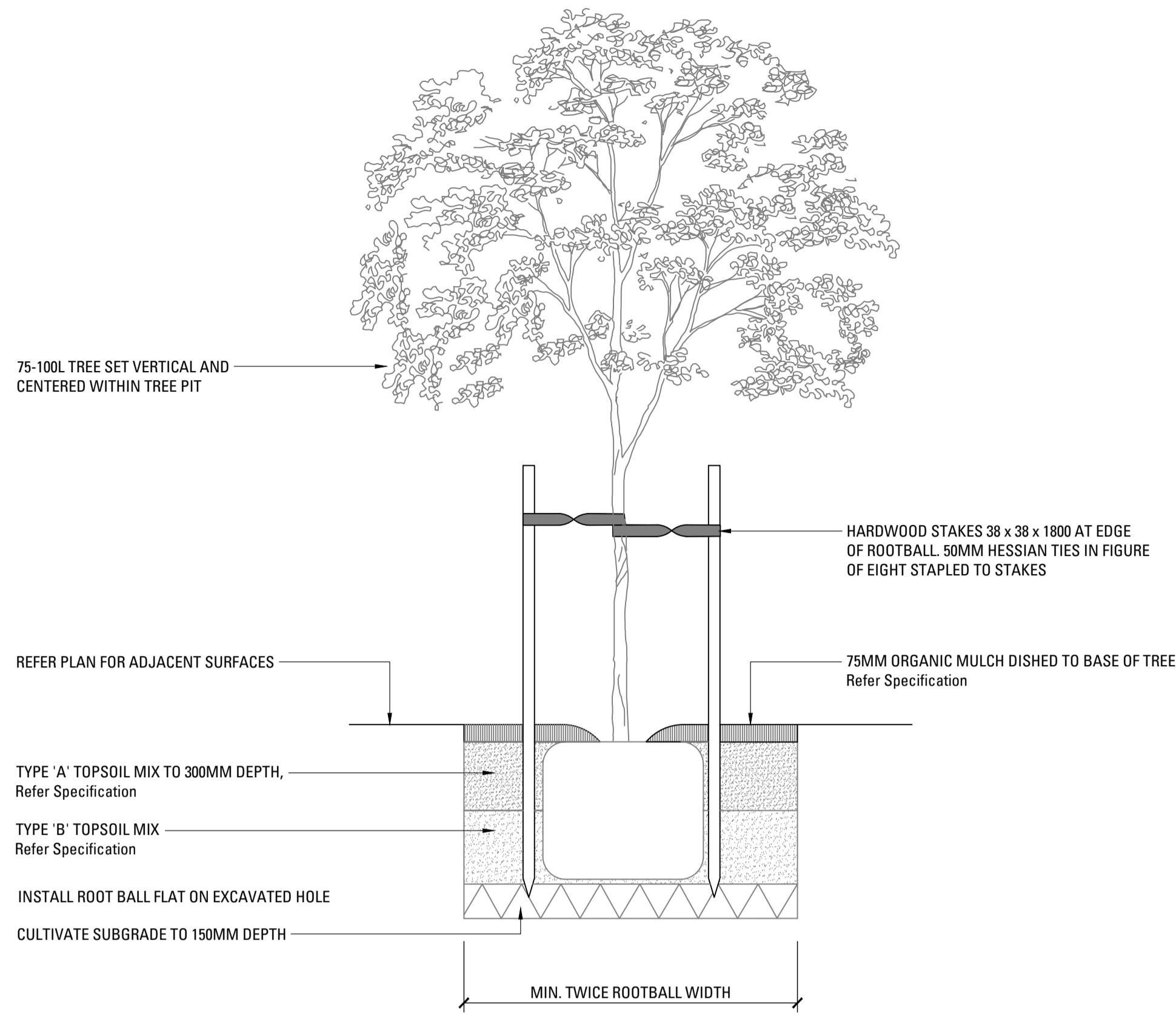
Drawing No. L406 Drawing Name Softworks Plan

Job No. 22-839 Issue F Scale 1:100 @ A1

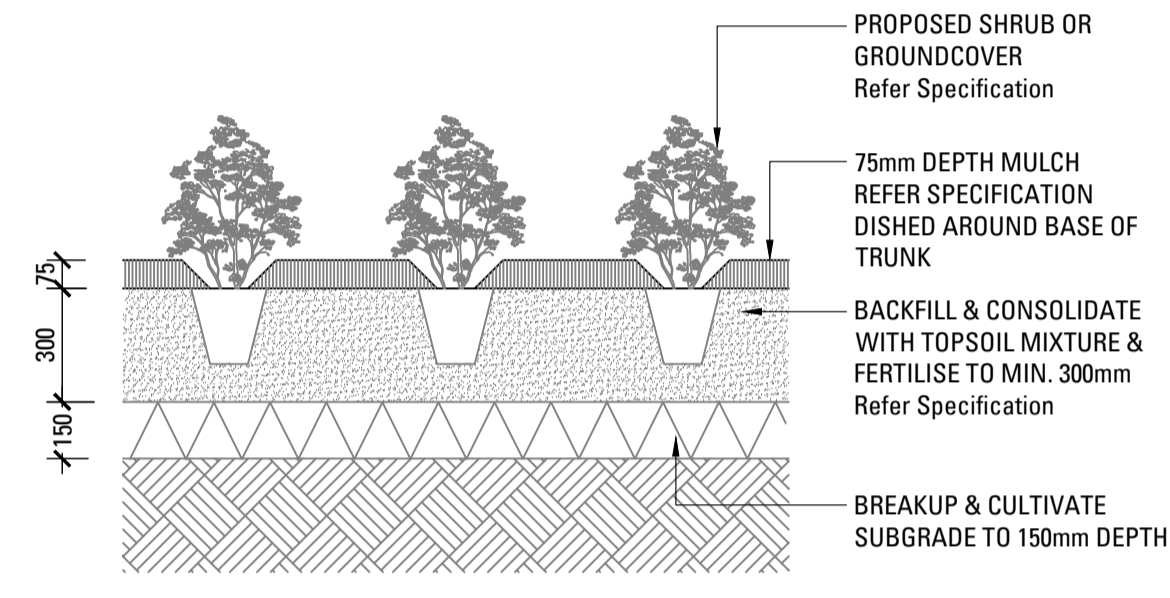


Sydney, Suite 75, Jones Bay Wharf, 26-32 Pirrama Road, Pyrmont NSW 2009
E sydney@arcadia.com.au T 02 8571 2900

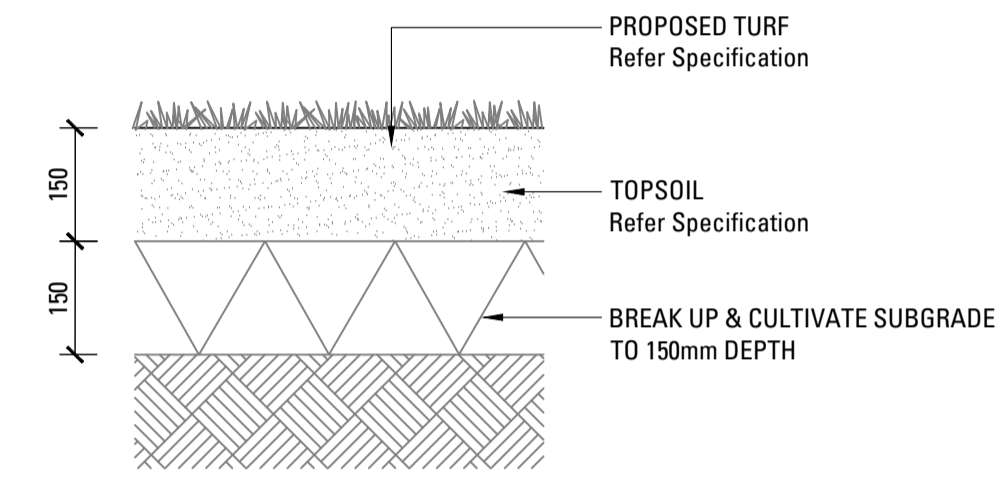
Brisbane, Suite 55, 232 Adelaide Street, Brisbane QLD 4000
E brisbane@arcadia.com.au T 07 3071 8000



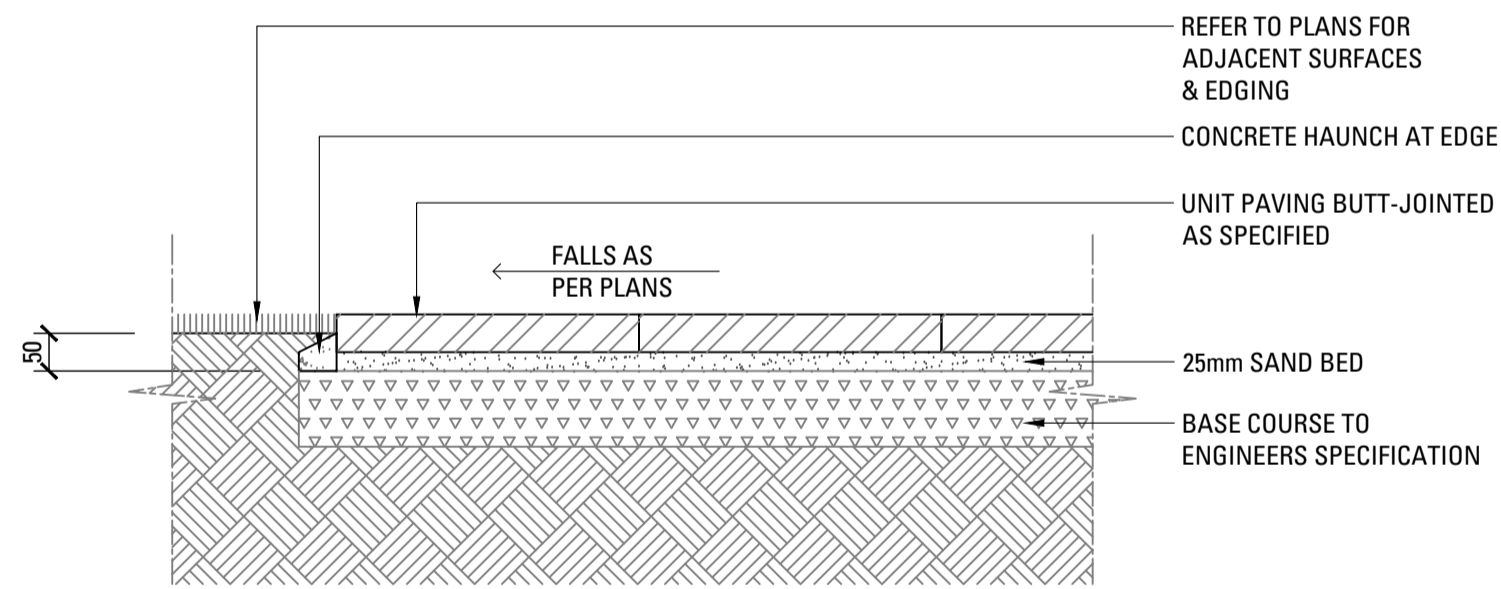
00 TREE PLANTING 100L
SCALE 1:20



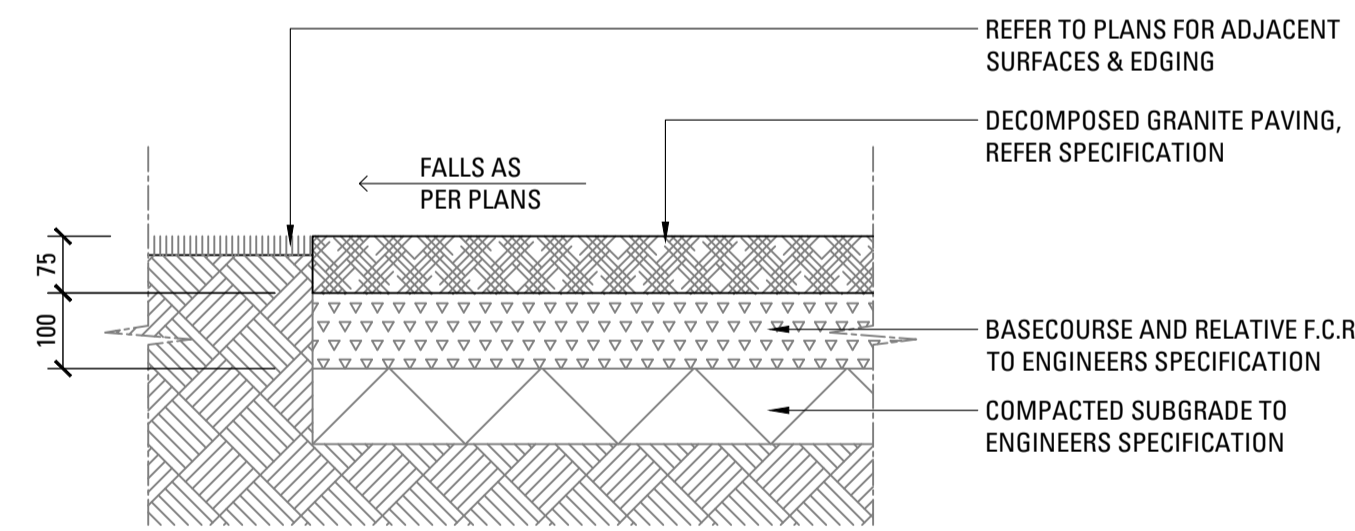
00 SHRUB OR GROUNDCOVER IN PLANTING BED
SCALE 1:20



00 TURF ON GRADE
SCALE 1:10



00 UNIT PAVERS ON GRADE
SCALE 1:10



00 DECOMPOSED GRANITE PAVING ON GRADE
SCALE 1:10

E	DA Submission	RC	NW	21.11.23
D	DA Submission	RC	NW	09.06.23
C	DA Submission	RC	NW	14.04.23
B	DA Submission	JT	NW	12.10.22
A	Draft Issue	JT	NW	23.09.22
Issue	Revision Description	Drawn	Check	Date

Not for Construction

Project
Hills Marketplace

Development Application



Drawing No. L601
Drawing Name Typical Details

Job No. 22-839
Issue E
Scale

Sydney, Suite 76, Jones Bay Wharf, 26-32 Pirrama Road, Pyrmont NSW 2009
Brisbane, Suite 56, 232 Adelaide Street, Brisbane QLD 4000
E sydney@arcadiala.com.au T 02 8571 2900
E brisbane@arcadiala.com.au T 07 3071 8000

ARCADIA

LANDSCAPE SPECIFICATION NOTES

SERVICES

BEFORE LANDSCAPE WORK IS COMMENCED THE LANDSCAPE CONTRACTOR IS TO ESTABLISH THE POSITION OF ALL SERVICE LINES AND ENSURE TREE PLANTING IS CARRIED OUT AT LEAST 3 METRES AWAY FROM THESE SERVICES. SERVICE LIDS, VENTS AND HYDRANTS SHALL BE LEFT EXPOSED AND NOT COVERED BY ANY LANDSCAPE FINISHES (TURFING, PAVING, GARDEN BEDS ETC.) FINISH ADJOINING SURFACES FLUSH WITH PIT LIDS.

ABORIST MANAGEMENT OF TREE PROTECTION

A QUALIFIED AND APPROVED ABORIST IS TO BE CONTRACTED TO UNDERTAKE OR MANAGE THE INSTALLATION OF PROTECTIVE FENCING, AND TO UNDERTAKE SUCH MEASURES AS HE DEEMS APPROPRIATE TO PRESERVE THE SUBJECT TREES TO BE RETAINED. THE ARBORIST IS TO BE RETAINED FOR THE ENTIRE CONTRACT PERIOD TO UNDERTAKE ONGOING MANAGEMENT AND REVIEW OF THE TREES.

DRAINAGE CELL AND FILTER FABRIC

FOR ON-SLAB AREAS INSTALL AN APPROVED 'DRAINAGE CELL' PRODUCT TO COMPREHENSIVELY COVER THE BOTTOM OF ALL PLANTERS. OVER DRAINAGE CELL TO ON-SLAB AREAS, A POLYFELT GEOTEXTILE LINING (AS SUPPLIED BY 'POLYFELT TS' OR APPROVED EQUIVALENT) IS TO BE INSTALLED TO COVER THE BOTTOM OF ALL PLANTERS, TURNED UP 300MM AND TAPED TO THE PLANTER SIDES TO ENSURE SOIL MIX DOES NOT ESCAPE INTO DRAINAGE OUTLETS/HOLES. INSTALL MIN. 50MM COARSE RIVER SAND OVER ALL GEOTEXTILE LINING PRIOR TO INSTALLATION OF SOIL MIX.

PLANTING MIXTURE

SHALL BE HOMOGENOUS BLEND OF SOIL AND ADDITIVES IN THE FOLLOWING PROPORTIONS:

EXISTING SITE SOIL IF SUITABLE OR

IMPORTED TOPSOIL 50%

COMPOST 30%

D/W SAND 20%

SOIL TESTING OF EXISTING SITE SOIL IS TO BE UNDERTAKEN TO ASSESS SUITABILITY OF USE AS PLANTING TOPSOIL AND COMPLIANCE WITH AUSTRALIAN STANDARDS.

MULCH APPLICATION

PLACE MULCH TO THE REQUIRED DEPTH, (REFER TO DRAWINGS) CLEAR OF PLANT STEMS, AND RAKE TO AN EVEN SURFACE FINISHING 25MM BELOW ADJOINING LEVELS. ENSURE MULCH IS WATERED IN AND TAMPED DOWN DURING INSTALLATION.

MULCH TYPE

PINE BARK: FROM MATURE TREES, GRADED IN SIZE FROM 15MM TO 30MM, FREE FROM WOOD SLIVERS. DARK BROWN IN COLOUR AND TEXTURE.

COMPOST

SHALL BE WELL ROTTED VEGETATIVE MATERIAL OR ANIMAL MANURE, OR OTHER APPROVED MATERIAL, FREE FROM HARMFUL CHEMICALS, GRASS AND WEED GROWTH AND WITH NEUTRAL PH. PROVIDE A CERTIFICATE OF PROOF OF PH UPON REQUEST.

PLANT MATERIAL

ALL PLANTS SUPPLIED ARE TO CONFORM WITH THOSE SPECIES LISTED IN THE PLANT SCHEDULE ON THE DRAWINGS. GENERALLY PLANTS SHALL BE VIGOROUS, WELL ESTABLISHED, HARDENED OFF, OF GOOD FORM CONSISTENT WITH SPECIES OR VARIETY, NOT SOFT OR FORCED, FREE FROM DISEASE OR INSECT PESTS WITH LARGE HEALTHY ROOT SYSTEMS AND NO EVIDENCE OF HAVING BEEN RESTRICTED OR DAMAGED. TREES SHALL HAVE A LEADING SHOOT. IMMEDIATELY REJECT DRIED OUT, DAMAGED OR UNHEALTHY PLANT MATERIAL BEFORE PLANTING. ALL STOCK IS TO BE CONTAINER GROWN FOR A MINIMUM OF SIX (6) MONTHS PRIOR TO DELIVERY TO SITE

FERTILISER MASS PLANTING AREAS:

FERTILISER SHALL BE 'NUTRICOTE' OR APPROVED EQUIVALENT IN GRANULE FORM INTENDED FOR SLOW RELEASE OF PLANT NUTRIENTS OVER A PERIOD OF APPROXIMATELY NINE MONTHS. THOROUGHLY MIX FERTILISER WITH PLANTING MIXTURE AT THE RECOMMENDED RATE, PRIOR TO INSTALLING PLANTS.

TURF

SHALL BE SIR WALTER BUFFALO. SHIRLEYS NO. 17 OR APPROVED EQUAL LAWN FOOD SHALL BE THOROUGHLY MIXED INTO THE TOPSOIL PRIOR TO PLACING TURF.

TREES IN GRASS AND SUPER ADVANCED TREES:

PELLETS SHALL BE IN THE FORM INTENDED TO UNIFORMLY RELEASE PLANT FOOD ELEMENTS FOR A PERIOD OF APPROXIMATELY NINE MONTHS EQUAL TO SHIRLEYS KOKEI PELLETS, ANALYSIS 6.3:1.8:2.9. KOKEI PELLETS SHALL BE PLACED AT THE TIME OF PLANTING TO THE BASE OF THE PLANT, 50MM MINIMUM FROM THE ROOT BALL AT A RATE OF TWO PELLETS PER 300MM OF TOP GROWTH TO A MAXIMUM OF 8 PELLETS PER TREE.

STAKING AND TYING

STAKES SHALL BE STRAIGHT HARDWOOD, FREE FROM KNOTS AND TWISTS, POINTED AT ONE END AND SIZED ACCORDING TO SIZE OF PLANTS TO BE STAKED.

A. 5-15 LITRE SIZE PLANT 1X(1200X25X25MM)

B. 35-75 LITRE SIZE PLANT 2X(1500X38X38MM)

C. 100-GREATER THAN 200LITRE 3X(1800X50X50MM)

TIES SHALL BE 50MM WIDE HESSIAN WEBBING OR APPROVED EQUIVALENT NAILED OR STAPLED TO STAKE. DRIVE STAKES A MINIMUM ONE THIRD OF THEIR LENGTH, AVOIDING DAMAGE TO THE ROOT SYSTEM, ON THE WINDWARD SIDE OF THE PLANT.

IRRIGATION SYSTEM

SUPPLY AN AUTOMATIC WATERING SYSTEM USING 'TORO IRRIGATION SYSTEM' OR SIMILAR APPROVED, WITH MICRO-JET SPRINKLER HEADS AND LOW DENSITY, RUBBER MODIFIED POLYPROPYLENE RETICULATION, TO INCLUDE FILTERS, BENDS JUNCTIONS, ENDS AND OTHER ANCILLARY EQUIPMENT. THE LANDSCAPER SHALL NOMINATE HIS SOURCE OF SUPPLY FOR THE WATERING SYSTEM AND OBTAIN APPROVAL FROM THE SUPERINTENDENT BEFORE PLACING ORDERS FOR EQUIPMENT OR SUPPLY.

A SCHEMATIC PLAN OF THE PROPOSED IRRIGATION SYSTEM IS TO BE PREPARED BY THE CONTRACTOR, SHOWING SOLENOIDS, PIPE DIAMETERS, AND ALL NOZZLE AND TRICKLE ATTACHMENT TYPES (INCLUDING SPRAY/HEAD ANGLE), FOR REVIEW BY THE SUPERINTENDENT PRIOR TO INSTALLATION

THE CONTRACTOR IS TO LIASE WITH THE HYDRAULIC ENGINEER AND COUNCIL AS NECESSARY, TO ENSURE THE THE IRRIGATION SYSTEM CONFORMS WITH ALL THE COUNCIL AND WATER BOARD CODES AND REQUIREMENTS.

PROVIDE AN AUTOMATIC CONTROLLER THAT PROVIDES FOR TWO WEEK SCHEDULING AND HOURLY MULTI-CYCLE OPERATION. THE CONTROLLER SHALL MANUAL OVERRIDE. PROGRAMMING SHALL BE UNDERTAKEN BY THE CONTRACTOR WHO SHALL ADVISE ON THE OPERATION OF THE SYSTEM.

PROVISION OF SECURE HOUSING FOR THE AUTOMATIC IRRIGATION CONTROLLER TO BE LOCATED IN ASSOCIATION WITH THE LANDSCAPE CONTRACTOR AND LOCATION CONFIRMED BY THE SUPERINTENDENT. WIRING TO CONNECT REMOTE SOLENOID LOCATIONS IS TO BE PROVIDED. THE CONTROLLER SHALL BE LOCATED IN A DRY PLACE, PROTECTED FROM THE WEATHER, AND ALL CABLE CONNECTIONS SHALL BE MADE WITH WATERPROOF CONNECTORS.

WATER SUPPLY POINTS TO BE SUPPLIED BY BUILDER.

IT SHALL BE THE CONTRACTOR'S RESPONSIBILITY TO ENSURE AND GUARANTEE SATISFACTORY OPERATION OF THE IRRIGATION SYSTEM.

AFTER THE SYSTEM HAS BEEN INSTALLED TO THE SATISFACTION OF THE SUPERINTENDENT, THE INSTALLATION SHALL BE TESTED UNDER KNOWN WORKING CONDITIONS. ACCEPTANCE OF THE INSTALLED PLANT AND EQUIPMENT SHALL BE SUBJECT TO THESE BEING SATISFACTORY.

TREATED PINE TIMBER EDGING

TIMBER EDGE: 100 X 25MM CCA TREATED RADIATA PINE TIMBER STAKES: 50 X 50 X 500MM CCA TREATED RADIATA PINE-SHARPENED AT ONE END. INSTALL IN LOCATIONS SHOWN ON THE DRAWINGS FLUSH TO FINISHED SURFACE LEVELS.

TURF

TURF ALL LANDSCAPE AREAS AS SHOWN ON THE LANDSCAPE DRAWINGS. TURF IS TO HAVE AN EVEN THICKNESS OF NOT LESS THAN 25MM. OBTAIN TURF FROM AN APPROVED GROWER. FURNISH A WARRANTY FROM THE GROWER THAT THE TURF IS FREE FROM WEEDS AND OTHER FOREIGN MATTER. DELIVER TURF TO THE SITE WITHIN 24 HOURS OF BEING CUT, AND LAY IT WITHIN 24 HOURS OF BEING DELIVERED.

TO PREPARE GRADED AREAS TO RECEIVE TURF, EXCAVATE THE AREA AND CULTIVATE SO AS TO ALLOW FOR IMPORTING OF 100MM OF TURF UNDERLAY SOIL. REMOVE ALL STONES OVER 50MM Ø AND REMOVE ALL WEEDS AND FOREIGN MATTER. SPREAD SOIL MIX A.B.S TO A DEPTH OF 100MM AND GRADE TO APPROPRIATE LEVELS TO ACHIEVE GENERAL EVEN GRADES TO DRAINAGE OUTLETS INSTALLED BY OTHERS.

LAY THE TURF ALONG THE LAND CONTOURS WITH STAGGERED, CLOSE BUTTED JOINTS, SO THAT THE FINISHED TURF SURFACE IS FLUSH WITH ADJACENT FINISHED SURFACES OF PAVING AND THE LIKE. AS SOON AS PRACTICABLE AFTER LAYING, ROLL THE TURF WITH A ROLLER WEIGHING NOT MORE THAN 90KG PER METRE OF WIDTH FOR SANDY OR LIGHT SOILS.

WATER AS NECESSARY TO KEEP THE SOIL MOIST TO A DEPTH OF 100MM. PROTECT NEWLY TURFED AREAS AGAINST TRAFFIC UNTIL GRASS IS ESTABLISHED. FERTILISE TWO WEEKS AFTER LAYING FERTILISE A.B.S

'TOP DRESS' THE TURF WHEN IT IS ESTABLISHED TO A DEPTH OF 10MM WITH COARSE WASHED RIVER SAND. RUB THE DRESSING WELL INTO THE JOINTS AND CORRECT ANY UNEVENNESS IN THE TURF SURFACES.

LANDSCAPE MAINTENANCE PROGRAM

MAINTENANCE SHALL MEAN THE CARE AND MAINTENANCE OF THE LANDSCAPE WORKS BY ACCEPTED HORTICULTURAL PRACTICE AS RECTIFYING ANY DEFECTS THAT BECOME APPARENT IN THE LANDSCAPE WORKS UNDER NORMAL USE. THIS SHALL INCLUDE, BUT SHALL NOT BE LIMITED TO, WATERING, MOWING, FERTILISING, RESEEDING, RETURFING, WEEDING, PEST AND DISEASE CONTROL, STAKING AND TYING, REPLANTING, CULTIVATION, PRUNING, AERATING, RENOVATING, TOP DRESSING, MAINTAINING THE SITE IN A NEAT AND TIDY CONDITION AS FOLLOWS:-

GENERAL

THE LANDSCAPE CONTRACTOR SHALL MAINTAIN THE LANDSCAPE WORKS FOR THE TERM OF THE MAINTENANCE (OR PLANT ESTABLISHMENT) PERIOD TO THE SATISFACTION OF THE COUNCIL. THE LANDSCAPE CONTRACTOR SHALL ATTEND TO THE SITE ON A WEEKLY BASIS. THE MAINTENANCE PERIOD SHALL COMMENCE AT PRACTICAL COMPLETION AND CONTINUE FOR A PERIOD OF TWENTY SIX (26) WEEKS.

WATERING

GRASS, TREES AND GARDEN AREAS SHALL BE WATERED REGULARLY SO AS TO ENSURE CONTINUOUS HEALTHY GROWTH.

RUBBISH REMOVAL

DURING THE TERM OF THE MAINTENANCE PERIOD THE LANDSCAPE CONTRACTOR SHALL REMOVE RUBBISH THAT MAY OCCUR AND REOCCUR THROUGHOUT THE MAINTENANCE PERIOD. THIS WORK SHALL BE CARRIED OUT REGULARLY SO THAT AT WEEKLY INTERVALS THE AREA MAY BE OBSERVED IN A COMPLETELY CLEAN AND TIDY CONDITION.

REPLACEMENTS

THE LANDSCAPE CONTRACTOR SHALL REPLACE ALL PLANTS THAT ARE MISSING, UNHEALTHY OR DEAD AT THE LANDSCAPE CONTRACTOR'S COST. REPLACEMENTS SHALL BE OF THE SAME SIZE, QUALITY AND SPECIES AS THE PLANT THAT HAS FAILED UNLESS OTHERWISE DIRECTED BY THE LANDSCAPE ARCHITECT. REPLACEMENTS SHALL BE MADE ON A CONTINUING BASIS NOT EXCEEDING TWO (2) WEEKS AFTER THE PLANT HAS DIED OR IS SEEN TO BE MISSING.

STAKES AND TIES

THE LANDSCAPE CONTRACTOR SHALL REPLACE OR ADJUST PLANT STAKES, AND TREE GUARDS AS NECESSARY OR AS DIRECTED BY THE LANDSCAPE ARCHITECT. REMOVE STAKES AND TIES AT THE END OF THE MAINTENANCE PERIOD IF SO DIRECTED.

PRUNING

TREES AND SHRUBS SHALL BE PRUNED AS DIRECTED BY THE LANDSCAPE ARCHITECT. PRUNING WILL BE DIRECTED AT THE MAINTENANCE OF THE DENSE FOLIAGE OR MISCELLANEOUS PRUNING AND BENEFICIAL TO THE CONDITION OF THE PLANTS. ANY DAMAGED GROWTH SHALL BE PRUNED. ALL PRUNED MATERIAL SHALL BE REMOVED FROM THE SITE.

MULCHED SURFACES

ALL MULCHED SURFACES SHALL BE MAINTAINED IN A CLEAN AND TIDY CONDITION AND BE REINSTATED IF NECESSARY TO ENSURE THAT A DEPTH OF 75MM IS MAINTAINED. ENSURE MULCH IS KEPT CLEAR OF PLANT STEMS AT ALL TIMES.

PEST AND DISEASED CONTROL

THE LANDSCAPE CONTRACTOR SHALL SPRAY AGAINST INSECT AND FUNGUS INFESTATION WITH ALL SPRAYING TO BE CARRIED OUT IN ACCORDANCE WITH THE MANUFACTURER'S DIRECTIONS. REPORT ALL INSTANCES OF PESTS AND DISEASES (IMMEDIATELY THAT THEY ARE DETECTED) TO THE LANDSCAPE ARCHITECT.

GRASS AND TURF AREAS

THE LANDSCAPE CONTRACTOR SHALL MAINTAIN ALL GRASS AND TURF AREAS BY WATERING, WEEDING, DRESSING, ROLLING, MOWING, TRIMMING OR OTHER OPERATIONS AS NECESSARY. SEED AND TURF SPECIES SHALL BE THE SAME AS THE ORIGINAL SPECIFIED MIXTURE. GRASS AND TURF AREAS SHALL BE SPRAYED WITH APPROVED SELECTIVE HERBICIDE AGAINST BROAD LEAFED WEEDS AS REQUIRED BY THE LANDSCAPE ARCHITECT AND IN ACCORDANCE WITH THE MANUFACTURER'S DIRECTIONS. GRASS AND TURF AREAS SHALL BE FERTILISED ONCE A YEAR IN AUTUMN WITH 'DYNAMIC LIFTER' FOR LAWNS AT A RATE OF 20KG PER 100M2. FERTILISER SHALL BE WATERED IN IMMEDIATELY AFTER APPLICATION. IRREGULARITIES IN THE GRASS AND TURF SHALL BE WATERED IN IMMEDIATELY AFTER APPLICATION. GRASS AND TURF AREAS SHALL BE KEPT MOWN TO MAINTAIN A HEALTHY AND VIGOROUS SWARD. MOWING HEIGHT: 30-50MM.

WEED ERADICATION

ERADICATE WEEDS BY ENVIRONMENTALLY ACCEPTABLE METHODS USING A NON-RESIDUAL GLYPHOSATE HERBICIDE (EG. 'ROUNDUP') IN ANY OF ITS REGISTERED FORMULAE, AT THE RECOMMENDED MAXIMUM RATE. REGULARLY REMOVE BY HAND, WEED GROWTH THAT MAY OCCUR OR RECUR THROUGHOUT GRASSED, PLANTED AND MULCHED AREAS. REMOVE WEED GROWTH FROM AN AREA 750MM DIAMETER AROUND THE BASE OF TREES IN GRASSED AREAS. CONTINUE ERADICATION THROUGHOUT THE COURSE OF THE WORKS AND DURING THE MAINTENANCE PERIOD.

SOIL SUBSIDENCE

ANY SOIL SUBSIDENCE OR EROSION WHICH MAY OCCUR AFTER THE SOIL FILLING AND PREPARATION OPERATIONS SHALL BE MADE GOOD BY THE LANDSCAPE CONTRACTOR AT NO COST TO THE CLIENT.

Copyright remains the property of Arcadia Design Group Pty Ltd. Use only figured dimensions. Any other required dimensions are to be referred to and supplied by the landscape architect. All discrepancies to be referred to the project manager and Arcadia Design Group Pty Ltd prior to construction. Ensure compliance with the Building Code of Australia and all relevant Australian Standards and Authority requirements.

E	DA Submission	RC	NW	21.11.23
D	DA Submission	RC	NW	09.06.23
C	DA Submission	RC	NW	14.04.23
B	DA Submission	JT	NW	12.10.22
A	Draft Issue	JT	NW	23.09.22


Issue	Revision	Description	Drawn	Check	Date
-------	----------	-------------	-------	-------	------

Not for Construction

Project

Hills Marketplace

Development Application

Client	
Drawing No.	Drawing Name
L701	Landscape Notes

Job No.	22-839
Issue	E
Scale	

Sydney, Suite 76, Jones Bay Wharf, 26-32 Pirrama Road, Pyrmont NSW 2009
E sydney@arcadia.com.au
T 02 8571 2900

Brisbane, Suite 56, 232 Adelaide Street, Brisbane QLD 4000
E brisbane@arcadia.com.au
T 07 3071 8000

ARCADIA