

UTILITY ASSETS LEGEND

ELECTRICITY

COMMS TELEPHONE LINE

COMMS OPTICAL FIBRE

COMMS HOUSE CONNECTION

WATER MAIN

RECYCLED WATER MAIN

WATER HOUSE CONNECTION

LOW PRESSURE GAS

GAS HOUSE CONNECTION

SEWER MAIN

STORMWATER PIPE

OVERHEAD ELECTRICITY

UTILITY MAPPING NOTES:

1. Subsurface utility investigation was undertaken by Atlas Pty Ltd, the plan is to be read in conjunction with the subsurface utility investigation report.

2. Positions are based on Astrea Class A & B point surface indicator(s) located during field survey. Confirmation of the exact position should be made to the relevant authorities prior to any excavation work. Other services may still exist.

3. This plan shows a representation of the dwg model. This model should be viewed in a cadd environment to interpret this information.

4. This utility plan is valid for 28 days starting from the date of the issue, as underground utility works are often updated.

5. Electricity cables are not necessarily enclosed in conduits and are not necessarily covered with markers, tape or other indicators of their presence.

6. All services have been electronically traced in the field and are shown here for diagrammatic purposes only. Depths shown are approximate only and should be verified prior to works.

7. This plan includes information describing the location of subterranean features, which were purported to exist at the time of the survey. This information was compiled from a combination of field techniques and available data from cooperating utility authorities. Whilst all care has been taken in the preparation of this plan of survey, we cannot guarantee that the plan is without flaw of any kind.

SUBSURFACE UTILITY INFORMATION (SUI) ASS488 LOCATION CLASS

Labelling utility information by a classification code allows the user of this information to understand clearly how the information was collected and then place an appropriate amount of reliance on it. Project risks related to underground utilities can then be managed.

GENERAL SURVEY LEGEND:

DP - DRAINAGE PIT
PQJM - DRAINAGE JUNCTION MANHOLE
PSMH - SEWER MANHOLE
PW-HY - HYDRANT
PWSV - STOP VALVE
PQUL - GULLY PIT
PQPM - GAS MARKER
PQTF - GAS TEST POINT
PPPL - POWER POLE
PTSP - TELSTRA PIT
TK - TOP OF KERB
LP - LIP OF GUTTER
PP - FOOTPATH
DW - DRIVEWAY

GENERAL SURVEY NOTES:

• THIS TITLEBLOCK IS AN INTEGRAL PART OF THIS DWG AND SHOULD NOT BE REMOVED

• COORDINATE SYSTEM MGA 2020

• LEVEL DATUM IS AHD

• IT IS THE RESPONSIBILITY OF ANY USER OF THIS DATA TO ENSURE ANY OTHER DATA BEING INTEGRATED IS ON THE SAME COORDINATE SYSTEM

• REFER TO THE FACE OF THE PLAN FOR TITLE NOTATIONS

• BOUNDARIES HAVE BEEN DEFINED BY SURVEY

• CONTOURS SHOWN ARE INDICATIVE OF LAND FORM. SPOT LEVELS SHOULD TAKE PRECEDENCE.

SCALE 1:100

GDA 2020

ORIGIN SSM 14684
E 339632.551 N6260709.649
ORIENTATION SSM 14684 TO PM 33352
AHD ORIGIN SSM 758 RL27.868

CLIENT : HARDI AGED CARE

PLAN IN RELATION TO : GORDON ST, MANLY VALE

SHOWING : TOPOGRAPHICAL SURVEY AND UTILITY MAPPING IN ACCORDANCE WITH AS4588.1-2019

PURPOSE: ENGINEERING DESIGN

SHEET 01 OF 02

DIGITAL SURVEY SOLUTIONS UTILITY MAPPING

SUITE 6.01, TRINITY II, TRINITY BUSINESS PARK
39 DELHI ROAD, NORTH RYDE 2113
SCOTT DEVERIDGE 0425 285 270
www.astrea.com.au

ASTREA

JOB REFERENCE : A4089

DWG No.: A4089-TOPO & UTIL-G

SURVEYOR: KF, JB

DATE OF SURVEY: SEP 2023

UTILITY LOCATOR: MB

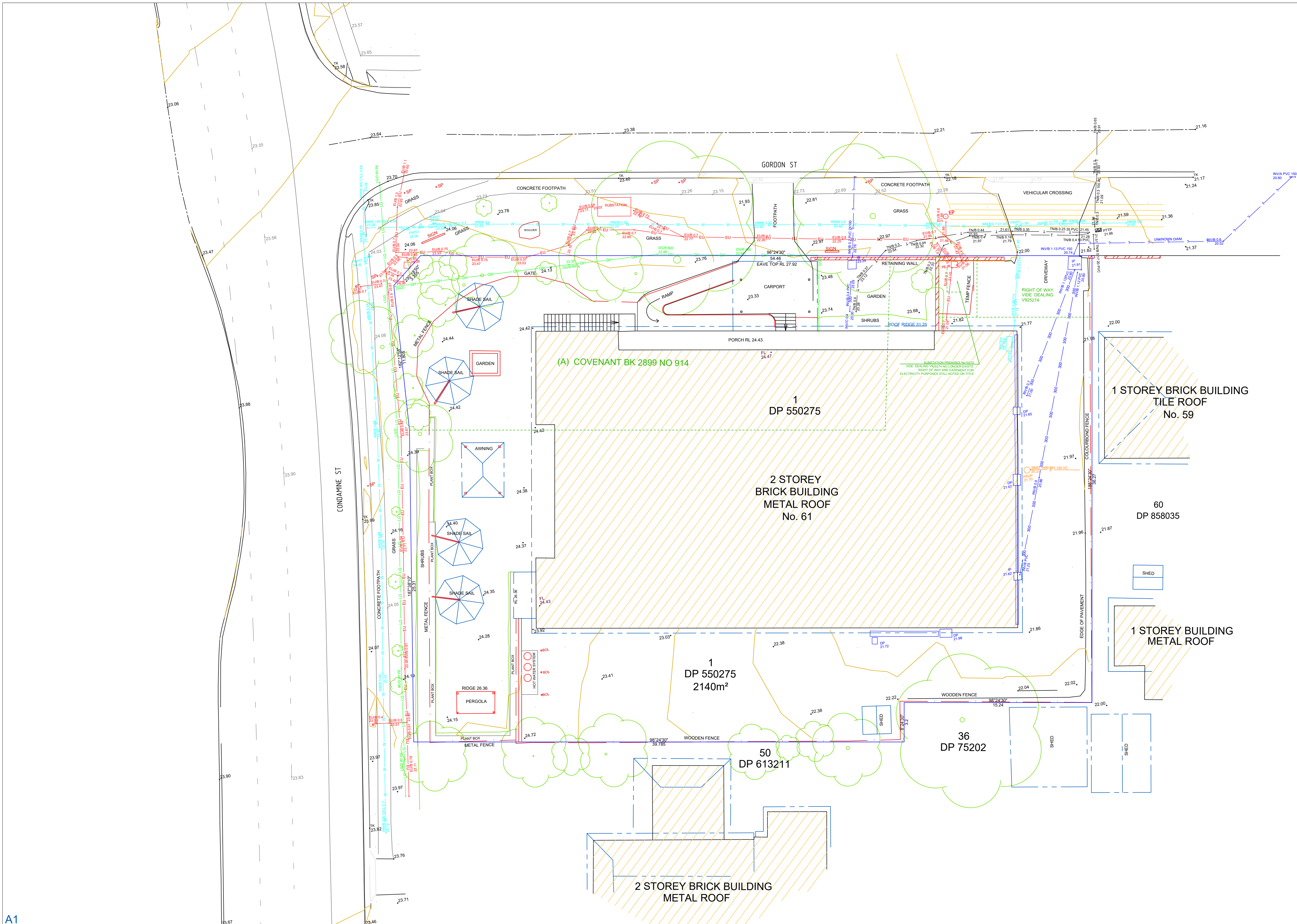
© ASTREA 2023 - UNAUTHORISED USE IS PROHIBITED

REV AMENDMENTS DATE

SCOTT DEVERIDGE

REGISTERED LAND SURVEYOR UNDER THE SURVEYING AND SPATIAL INFORMATION ACT, 2002

I/D 7453



MG



Lot 1 in DP550275 title notations:
1 RESERVATIONS AND CONDITIONS IN
THE CROWN GRANT(S)
2 BK 2899 NO 914 COVENANT
AFFECTING PART

A1

UTILITY ASSETS LEGEND	
ELECTRICITY	EU
COMMS TELEPHONE LINE	T
COMMS OPTICAL FIBRE	OU
COMMS HOUSE CONNECTION	TH
WATER MAIN	W
RECYCLED WATER MAIN	WR
WATER HOUSE CONNECTION	WH
LOW PRESSURE GAS	LG
GAS HOUSE CONNECTION	GH
SEWER MAIN	S
STORMWATER PIPE	SW
OVERHEAD ELECTRICITY	OH

UTILITY MAPPING NOTES:

- Subsurface utility investigation was undertaken by Astrea Pty Ltd, the plan is to be read in conjunction with the subsurface utility investigation report.
- Positions are based on Astrea Class A & B point surface indicator(s) located during field survey. Confirmation of the exact position should be made to the relevant authorities prior to any excavation work. Other services may still exist.
- This plan shows a representation of the dwg model. This model should be viewed in a cadd environment to interpret this information.
- This utility plan is valid for 28 days starting from the date of the issue, as underground utility works are often updated.
- Electricity cables are not necessarily enclosed in conduits and are not necessarily covered with markers, tape or other indicators of their presence.
- All services have been electronically traced in the field and are shown here for diagrammatic purposes only. Depths shown are approximate only and should be verified prior to works.
- This plan includes information describing the location of subterranean features, which were purported to exist at the time of the survey. This information was compiled from a combination of field techniques and available data from cooperating utility authorities. Whilst all care has been taken in the preparation of this plan of survey, we cannot guarantee that the plan is without flaw of any kind.

SUBSURFACE UTILITY INFORMATION (SUI) AS488 LOCATION CLASS

Labelling utility information by a classification code allows the user of this information to understand clearly how the information was collected and then place an appropriate amount of reliance on it. Project risks related to underground utilities can then be managed.

CLASS A: Information is the highest possible level of accuracy and is obtained by exposing the underground utility using a on-destructive excavation (pot holing) technique. The vertical information for this locating method is to the top or shallowest part of the located service. The 3D location is recorded by survey as an X, Y, Z coordinate.

CLASS B: Information is collected by designating the horizontal and vertical location of underground utilities by using electromagnetic pipe and cable locators, sondes or flexi-trace, ground penetrating radar and acoustic pulse equipment. This is the most common form of utility locating and although an X, Y and Z axis can be established it is not always entirely accurate due to differing electromagnetic fields, soil conditions and multiple banks of cables affecting the locating signal.

CLASS C: Information is collected by correlating the survey of visible utility surface features such as marker plates or water hydrants and acquired Dial-Before-You-Dig plans to "draw" a string which shows the approximate position of services. This method does not usually show multiple banks of cables and does not always show three dimensional information. Electronically traced locate marks with poor scratchy signals are represented as QL-C.

CLASS D: Information is the most basic level of utility locations using only information based on existing Dial-Before-You-Dig plans and by measuring boundary offsets etc. This method of utility locations should always be treated as an indication of the presence of a service only and should not be used for design. GPR scans are also represented as QL-D as the GPR image cannot be confirmed to its origin point. Depths on GPR scan must be treated as indicative only.

GENERAL SURVEY LEGEND:

DP - DRAINAGE PIT
PJUM - DRAINAGE JUNCTION MANHOLE
PSMH - SEWER MANHOLE
PWV - HYDRANT
PVS - STOP VALVE
PQUL - GULLY PIT
PGPM - GAS MARKER
POTF - GAS TEST POINT
PPPL - POWER POLE
PTSP - TELSTRA PIT
TK - TOP OF KERB
LP - LIP OF GUTTER
PP - PRAM RAMP
DW - DRIVEWAY

SCALE 1:150

ORIGIN SSM 14684
E 339632.551 N6260709.649
ORIENTATION SSM 14684 TO PM 33352
AHD ORIGIN SSM 758 RL27.868

DIAL BEFORE YOU DIG
www.1100.com.au

GENERAL SURVEY NOTES:

- THIS TITLEBLOCK IS AN INTEGRAL PART OF THIS DWG AND SHOULD NOT BE REMOVED
- COORDINATE SYSTEM MGA 2020
- LEVEL DATUM IS AHD
- IT IS THE RESPONSIBILITY OF ANY USER OF THIS DATA TO ENSURE ANY OTHER DATA BEING INTEGRATED IS ON THE SAME COORDINATE SYSTEM
- REFER TO THE FACE OF THE PLAN FOR TITLE NOTATIONS
- BOUNDARIES HAVE BEEN DEFINED BY SURVEY
- CONTOURS SHOWN ARE INDICATIVE OF LAND FORM
- SPOT LEVELS SHOULD TAKE PRECEDENCE

SCALE 1:150

ORIGIN SSM 14684
E 339632.551 N6260709.649
ORIENTATION SSM 14684 TO PM 33352
AHD ORIGIN SSM 758 RL27.868

CLIENT : HARDI AGED CARE

PLAN IN RELATION TO :
GORDON ST, MANLY VALE

SHOWING : TOPOGRAPHICAL SURVEY AND
UTILITY MAPPING IN ACCORDANCE WITH
AS4588.1-2019

PURPOSE: ENGINEERING DESIGN

SHEET 02 OF 02

DIGITAL SURVEY SOLUTIONS
UTILITY MAPPING

SUITE 6.01, TRINITY II, TRINITY BUSINESS PARK
39 DELHI ROAD, NORTH RYDE 2113
SCOTT DEVERIDGE 0425 285 270
www.astrea.com.au

Astrea

JOB REFERENCE : A4089
DWG No.: A4089-TOPO & UTIL-G

SURVEYOR: KF, JB
DATE OF SURVEY: SEP 2023
UTILITY LOCATOR: MB

REGISTERED LAND SURVEYOR
UNDER THE SURVEYING AND
SPATIAL INFORMATION ACT, 2002

© ASTREA 2023 - UNAUTHORISED USE IS PROHIBITED

REV AMENDMENTS DATE