

Abbreviation	Botanical Name	Common Name	Mature Height (m)	Pot Size	Qty
<b>Trees</b>					
ACM smi	Acmena smithii	Lilly Pilly	0.5-0.6	45L	18
ANG cos	Angophora costata	Sydney red gum	15-25	75L	2
BAC myr	Backhousia myrtifolia	Cinnamon myrtle	3	45L	6
BAN int	Banksia integrifolia	Costal Banksia	8-10	45L	3
BAN spi	Banksia spinulosa	Hairpin Banksia	1-3	45L	9
CER gum	Ceratopetalum gummiferum	NSW Christmas Bush	5	35L	6
ELA gum	Elaeocarpus Eumundii	Eumundi quandong	5-10	200L	10
GLO fer	Glochidion ferdinandi	Cheese Tree	20	400L	2
LIV aus (1.0M)	Livistona australis	Cabbage-Tree Palm	25-30	1m clear stem	5
LIV aus (2.0M)	Livistona australis	Cabbage-Tree Palm	25-30	2m clear stem	2
LIV aus (4.0M)	Livistona australis	Cabbage-Tree Palm	25-30	4m clear stem	2
MAG sou	Magnolia soulangiana	Deciduous Magnolia	8-12	200L	2
TRI lau	Tristania laurina	Watergum	8	75L	1
<b>Shrubs</b>					
ABR orn	Abrophyllum ornans	Native hydrangea	3-8	200mm	25
ACA str	Acacia stricta	Straight wattle	1-5	200mm	15
BAE imb	Baeckea imbricata	Heath myrtle	1	200mm	15
BLA nob	Blandfordia nobilis	Christmas bell	0.4	200mm	15
COR alb	Correa alba	White correa	1.5	300mm	85
DOR exc (25)	Doryanthes excelsa	Gynea lily	2-4	25L	55
DOR exc (45)	Doryanthes excelsa	Gynea lily	2-4	45L	25
DOR exc (75)	Doryanthes excelsa	Gynea lily	2-4	75L	15
EPA lon	Epacris longiflora	Fuchsia heath	0.5-2	200mm	55
ERI bux	Eriostemon buxifolius	Box-leaf waxflower	0.3-0.6	200mm	35
ERI aus	Eriostemon australis	Pink wax flower	2	300mm	65
GRE lin	Grevillea linearifolia	White spider flower	1-2	300mm	25
HIB emp	Hibbertia empetrifolia	Trailing Guinea-flower	1-2	200mm	85
JAC sco	Jacksonia scoparia	Dogwood	5	200mm	25
KUN amb	Kunzea ambigua	Poverty bush	5	200mm	15
LEU par	Leucopogon parviflorus	Costal beard-heath	1-5	200mm	15
MEL hyp	Melaleuca hypericifolia	Hillock bush	6	200mm	5
MEL thy	Melaleuca thymifolia	Thyme scented melaleuca	1.0-1.5	140mm	5
NOT lon	Notelaea longifolia	Long-leaved-olive	3	200mm	15
OLE tom	Olearia tomentosa	Toothed paper daisy	1.5-2.0	140mm	35
PAN pan	Pandorea pandorana	Wonga wonga vine	6	140mm	55
PEL aus	Pelargonium australe	Austral Storks	0.5	140mm	35
PRO ova	Prostanthera ovifolia	Mint Bush	1.5-5	140mm	35
SYZ ole	Syzygium oleosum	Blue Lilly Pilly	7	300mm	15
SYZ pan	Syzygium paniculatum	Magenta Lilly Pilly	15	300mm	15
TEL spe	Telopea speciosissima	Waratah	3	300mm	7
WES fru	Westringia fruticosa	Costal Rosemary	3	300mm	15
<b>Accents</b>					
MAC com	Macrozamia communis	Burrawang	2-3	45L	15
PAT ser	Patersonia sericea	Purple flag	0.6	300mm	15
PER lev	Persoonia levis	Broad-leaved geebung	5	300mm	15
XAN sp	Xanthorrhoea sp.	Grass Tree	2-6	45L	10
XAN arb	Xanthorrhoea arborea	Broadleaf grass-tree	0.6	35L	30
<b>Ferns</b>					
ADI aet	Adiantum aethiopicum	Common maidenhair	0.45	100mm	150
BLE nud	Blechnum nudum	Water fern	0.5-1	200mm	75
CYA aus (1M)	Cyathea australis	The rough tree fern	10-15	1m clear stem	10
CYA aus (2M)	Cyathea australis	The rough tree fern	10-15	2m clear stem	10
<b>Grasses &amp; Groundcovers (3 plants per 1m2)</b>					
CAR gla	Carpobrotus glaucescens	Pig Face	0.2	Tube	325
DIA cae	Dianella caerulea 'producta'	Paroo Lily	0.4	V/Cell	325
DOO asp	Doodia aspera	Pickly Rasp Fern	0.5	140mm	325
GAH asp	Ghania aspera	Rough saw sedge	1-1-05	V/Cell	325
GER hom	Geranium homeanum	Native geranium	0.7	100mm	325
LOM mul	Lomandra multiflora	Many flowered Lomandra	0.5	V/Cell	325
LOM obl	Lomandra obliqua	Fish bones	0.1	V/Cell	325
MYO ins	Myoporum insulare	Boobialla	0.2-6	140mm	325
POA aff	Poa affinis	Native poa grass	0.4-1.2	140mm	325

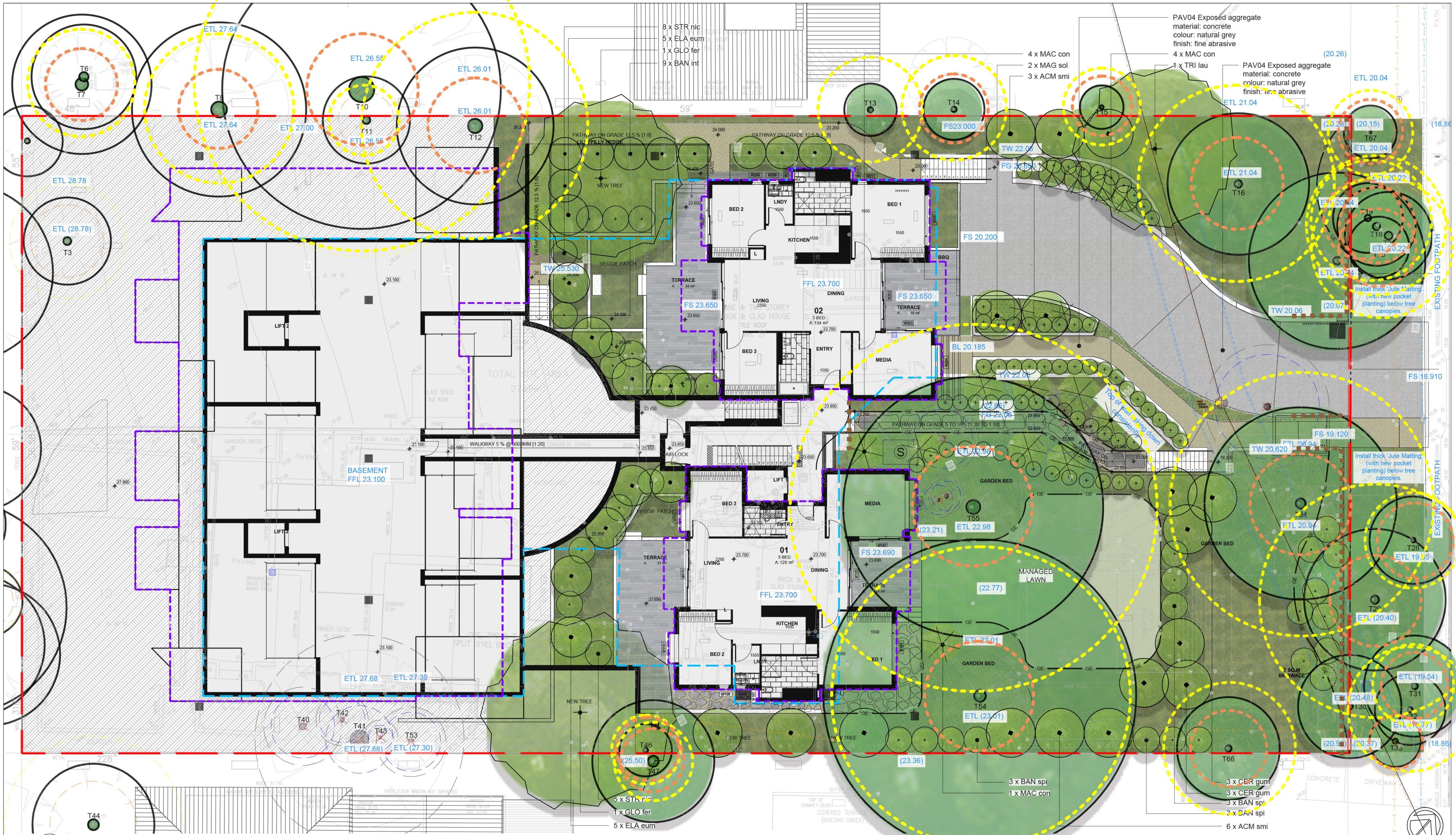
1 Overall Landscape Plan

Scale 1:200 @ A1

<b>LEGEND</b> <b>GENERAL</b> PROPERTY BOUNDARY BASEMENT OUTLINE ROOF OUTLINE		<b>TREE RETENTION, REMOVAL AND PRUNING</b> EXISTING TREES - TO BE RETAINED & PROTECTED (as per Tree Protection Zone AS4907) EXISTING TREES - TO BE REMOVED		<b>MATERIALS, FINISHES &amp; FURNITURE</b> GARDEN EDGE SCULPTURE (Garden Ornament) WALLING TYPE 1 - Mass Sandstone Logs WALLING TYPE 2 - Block, Sandstone Cladding		<b>PAVING</b> PAVING TYPE 1 - Unit Pavers PAVING TYPE 2 - Stepping stones PAVING TYPE 3 - Artificial Turf PAVING TYPE 4 - Exposed aggregate		<b>PLANTING</b> PROPOSED TREES MANAGED LAWN MASS PLANTING		<b>PROJECT</b> NEW SENIORS LIVING DEVELOPMENT 25-27 KEVIN AVENUE, AVALON BEACH, NSW 2107 <b>LANDSCAPE ARCHITECT</b> <b>GARTNERTROVATO</b> L1/13 10 Park Street Mone Vale, NSW 2103 Phone: 01 2 841 1 2734 45/6 Jubilee Avenue, Warrlewood, NSW Australia www.gartnertrovato.com		<b>DRAWING TITLE</b> Overall Landscape Plan APPROVED FOR RELEASE AILA #1420 DATE: 26/10/23 DRAWN: DF CHECKED: CG PROJECT NO: GTR03 DRAWING NO: GTR03-DA-100 ISSUE: A	
--	--	--	--	--	--	---	--	--	--	---	--	---	--

COPYRIGHT OF DESIGN SHOWN HERE IS RETAINED AND AUTHORITY FOR ANY REPRODUCTION, IF IN DOUBT ASK. FOLLOW WRITTEN DIMENSIONS ONLY. DO NOT SCALE OFF DRAWINGS. DO NOT KEEP SUPERSEDED DRAWINGS ON SITE.





1 Landscape Plan - Ground Level

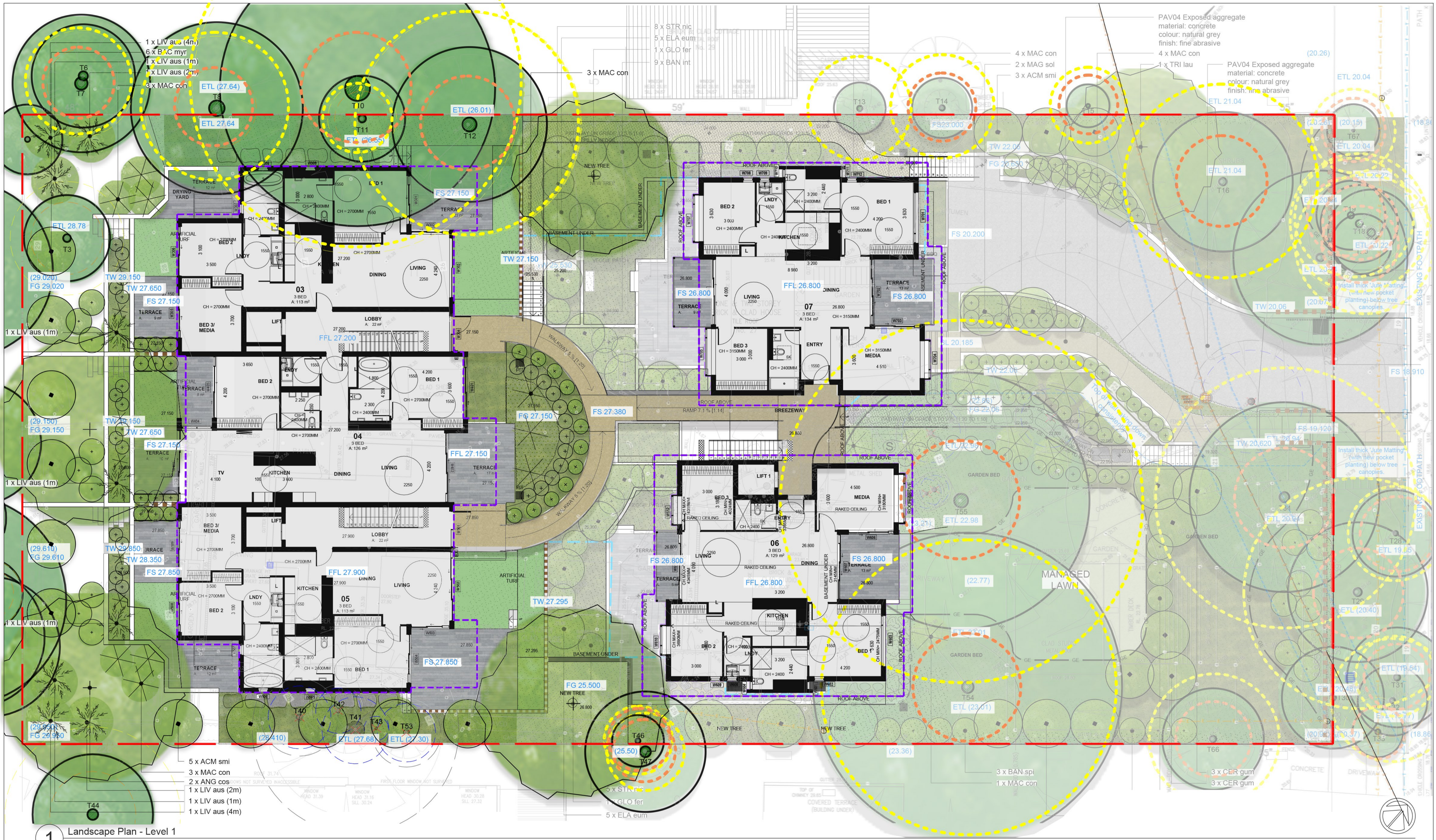
Scale 1:100 @ A1

<b>LEGEND</b> <b>GENERAL</b> PROPERTY BOUNDARY BASEMENT OUTLINE ROOF OUTLINE		<b>TREE RETENTION, REMOVAL AND PRUNING</b> EXISTING TREES - TO BE RETAINED & PROTECTED (as per Tree Protection Zone AS4907) EXISTING TREES - TO BE REMOVED		<b>MATERIALS, FINISHES &amp; FURNITURE</b> GARDEN EDGE SCULPTURE (Garden Ornament) WALLING TYPE 1 - Mass Sandstone Logs WALLING TYPE 2 - Block, Sandstone Cladding		<b>PAVING</b> PAVING TYPE 1 - Unit Pavers PAVING TYPE 2 - Stepping stones PAVING TYPE 3 - Artificial Turf PAVING TYPE 4 - Exposed aggregate		<b>PLANTING</b> PROPOSED TREES MANAGED LAWN MASS PLANTING		<b>PROJECT</b> NEW SENIORS LIVING DEVELOPMENT 25-27 KEVIN AVENUE, AVALON BEACH, NSW 2107 <b>LANDSCAPE ARCHITECT</b>  L1/13 10 Park Street Mone Vale, NSW 2103 Phone: 61 2 8411 2734 40/6 Jubilee Avenue, Warrlewood, NSW Australia www.symstudio.com		<b>DRAWING TITLE</b> Landscape Plan (1 of 2) - Ground Level <b>APPROVED FOR RELEASE</b> AILA #1420 <b>DATE</b> 30/10/23 <b>PROJECT No.</b> GTR03 <b>DRAWING No.</b> GTR03-DA-101 <b>ISSUE</b> B	
--	--	--	--	--	--	---	--	--	--	--	--	--	--

30/10/2023	B	DEVELOPMENT APPLICATION	DF
26/10/2023	A	DEVELOPMENT APPLICATION	DF
12/10/2023	P1	DEVELOPMENT APPLICATION	DF
DATE	ISSUE	AMENDMENT	BY

COPYRIGHT OF DESIGN SHOWN HERE IS RETAINED AND AUTHORITY FOR ANY REPRODUCTION, IF IN DOUBT ASK. FOLLOW WRITTEN DIMENSIONS ONLY. DO NOT SCALE OFF DRAWINGS. DO NOT KEEP SUPERSEDED DRAWINGS ON SITE.





1 Landscape Plan - Level 1

Scale 1:100 @ A1

26/10/2023	A	DEVELOPMENT APPLICATION	DF
12/10/2023	P1	DEVELOPMENT APPLICATION	DF
DATE	ISSUE	AMENDMENT	BY

LEGEND	
GENERAL	
	PROPERTY BOUNDARY
	BASEMENT OUTLINE
	ROOF OUTLINE

TREE RETENTION, REMOVAL AND PRUNING	
	EXISTING TREES - TO BE RETAINED & PROTECTED (as per Tree Protection Zone AS4907)
	EXISTING TREES - TO BE REMOVED

MATERIALS, FINISHES & FURNITURE	
	GARDEN EDGE
	SCULPTURE (Garden Ornament)
	WALLING TYPE 1 - Mass Sandstone Logs
	WALLING TYPE 2 - Block, Sandstone Cladding

	PAVING TYPE 1 - Unit Pavers
	PAVING TYPE 2 - Stepping stones
	PAVING TYPE 3 - Artificial Turf
	PAVING TYPE 4 - Exposed aggregate

	PRIVACY SCREEN, GROUND LEVEL
--	------------------------------

PLANTING	
	PROPOSED TREES
	MANAGED LAWN
	MASS PLANTING

PROJECT  
**NEW SENIORS LIVING DEVELOPMENT**  
 25-27 KEVIN AVENUE, AVALON BEACH, NSW 2107

DRAWING TITLE  
**Landscape Plan (2 of 2) - Level 1**

APPROVED FOR RELEASE  
 AILA # 1420

DATE  
 26/10/23

DRAWN  
 DF

CHECKED  
 CG

PROJECT No.  
 GTR03

DRAWING No.  
 GTR03-DA-102

ISSUE  
 A

LANDSCAPE ARCHITECT  
**sym. studio**  
 L1/13 10 Park Street  
 Mone Vale, NSW 2103  
 Phone: 61 2 8411 2734  
 4/3/6 Jubilee Avenue, Warriewood, NSW Australia www.symstudio.com.au

DATE	DRAWN	CHECKED
26/10/23	DF	CG
PROJECT No.	DRAWING No.	ISSUE
GTR03	GTR03-DA-102	A

COPYRIGHT OF DESIGN SHOWN HERE IS RETAINED AND AUTHORITY FOR ANY REPRODUCTION, IF IN DOUBT ASK. FOLLOW WRITTEN DIRECTIONS ONLY. DO NOT SCALE OFF DRAWINGS. DO NOT KEEP SUPERSEDED DRAWINGS ON SITE.