

STATEMENT AND DETAILS OF MATERIALS PROPOSED

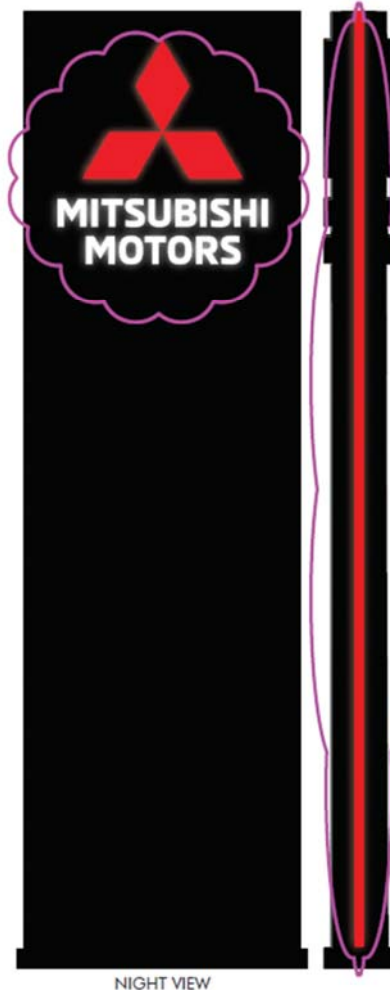
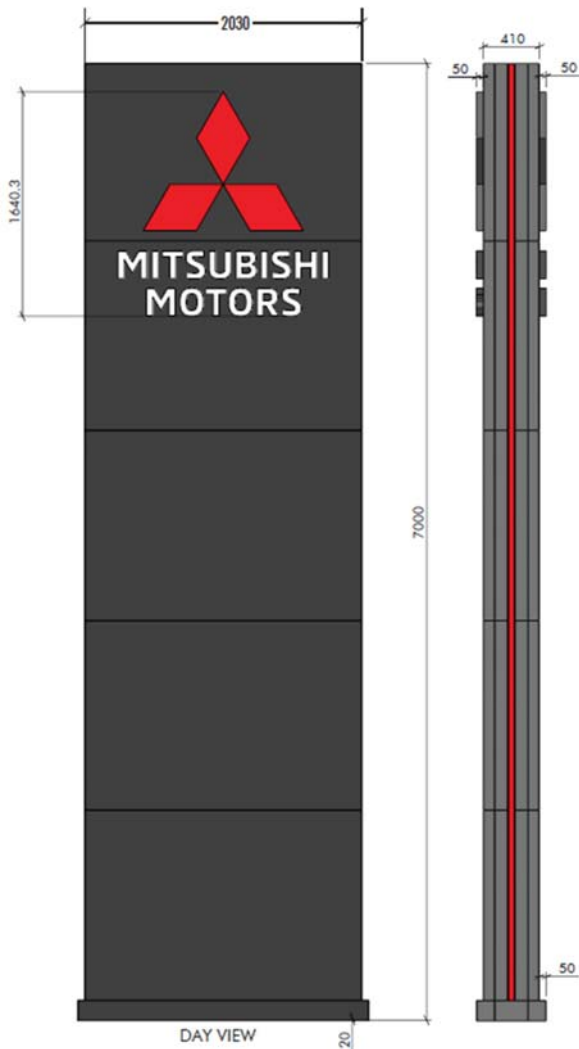
The External Surface of the Proposed Business Identification Signage for 776-780 Pittwater Road, Brookvale NSW 2100 (Lot 1 DP 1068612).

The Panels are made of ACM Cladding. ALL measurements are in millimetres

Lighting Note: Low Intensity LED Lighting | Total Lighting Does Not Exceed 300cd/m²

Sign 1 - 7.0m Double Side, LED Illuminated Pylon (Replacement)

Approx. 0.98sqm Illumination p/face
Approx 0.4sqm Illumination p/strip
(Total - 2.76sqm Overall)



FONTS USED: MMC MEDIUM

COLOURS:

-  4mm black ACM
-  Opal Acrylic
-  Red Acrylic

CONSTRUCTION DETAILS:

PYLON SIGN

Steel Internal Frame, clad in 4mm Black ACM. Internally illuminated red acrylic sides and acrylic faced steel can fabricated wordmark.
Pylon to use existing footings.

776-780 Pittwater Road, Brookvale NSW 2100
(Our Ref JV106797)

1300 000 367
+612 4968 1212

www.emsigns.com.au
sales@emsigns.com.au

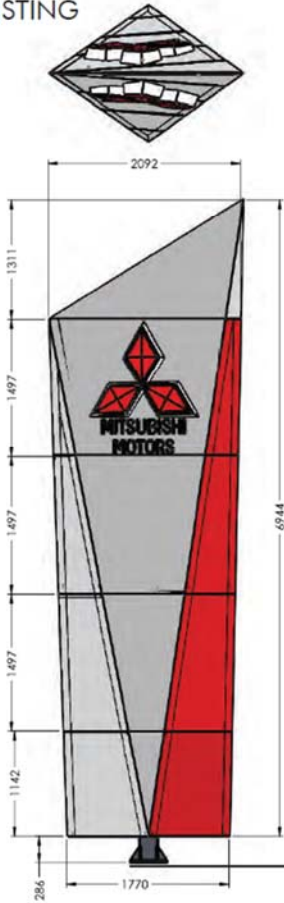
24 Rural Dr, Sandgate NSW 2304
38 Lillie Cres, Tullamarine VIC 3043



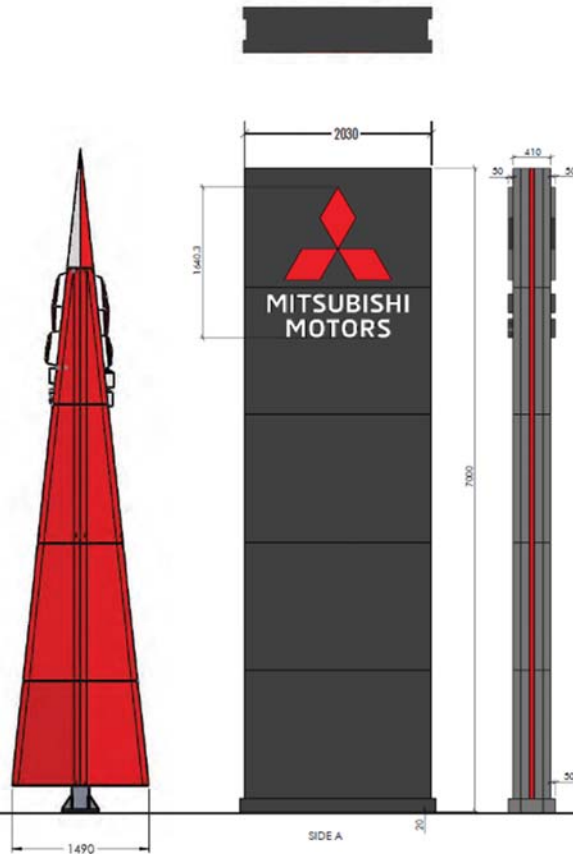
Existing/Replacement

Existing 7.0m Pylon has approx. 1.0sqm Illumination p/face (Total 2.0sqm)

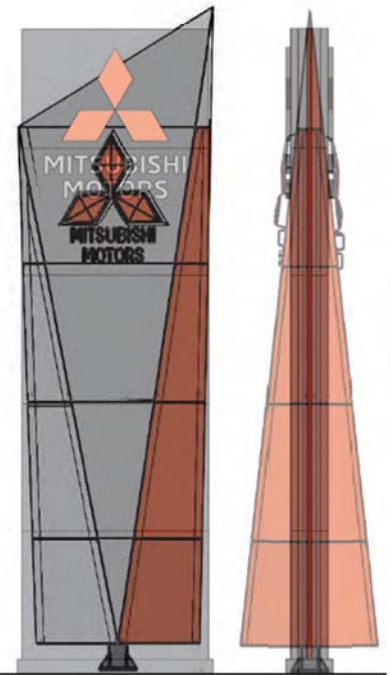
EXISTING



PROPOSED



OVERLAY



776-780 Pittwater Road, Brookvale NSW 2100
(Our Ref JV106797)



1300 000 367
+612 4968 1212



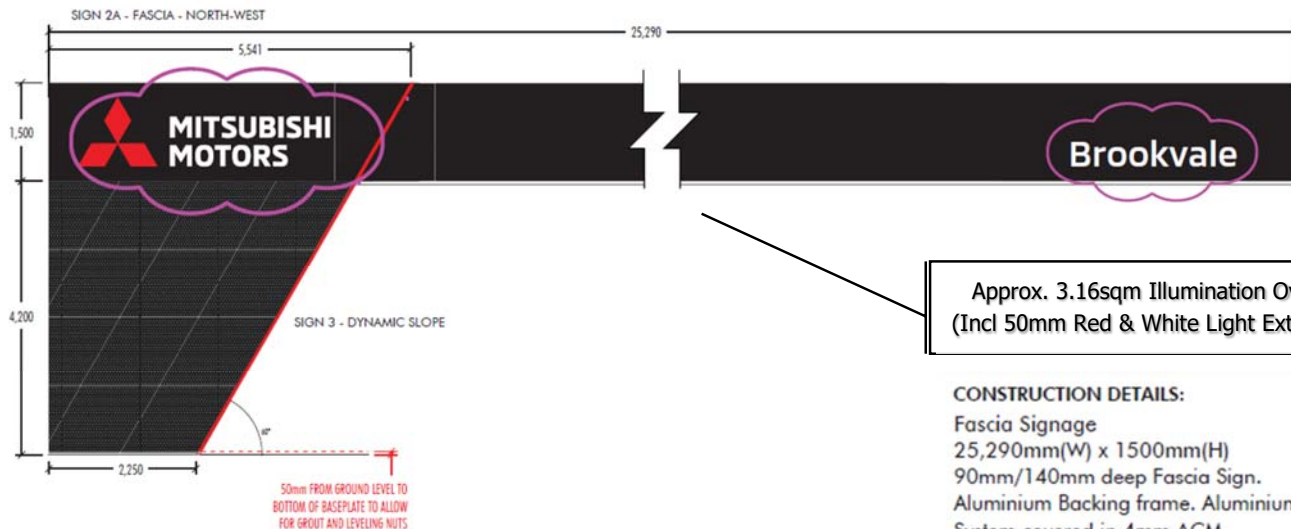
www.emsigns.com.au
sales@emsigns.com.au



24 Rural Dr, Sandgate NSW 2304
38 Lillie Cres, Tullamarine VIC 3043



Sign 2A & 3 - LED Illuminated Fascia and Dynamic Slope (North Wests)



Approx. 3.16sqm Illumination Overall
(Incl 50mm Red & White Light Extrusion)

CONSTRUCTION DETAILS:

Fascia Signage
25,290mm(W) x 1500mm(H)
90mm/140mm deep Fascia Sign.
Aluminium Backing frame. Aluminium cassette System covered in 4mm ACM.

Illuminated steel can Fabricated letters and wordmark with acrylic faces, screwed to cassette system.

Illuminated Aluminium Light extrusion with white acrylic face.

Dynamic Slope
5,541mm(W) x 4200mm(H)
Steel frame clad with 4mm black perforated ACM panels. free standing signage fixed to building structure.

illuminated Aluminium Light Extrusion with Red acrylic face.

ILLUMINATION EXAMPLE



Fonts USED: MMC MEDIUM

COLOURS:

-  4mm BLACK ACM
-  RED ACRYLIC
-  WHITE ACRYLIC

Sign 2B - LED Illuminated Fascia (North East)



CONSTRUCTION DETAILS:

Fascia Signage
17,500mm(W) x 1500mm(H)
90mm/140mm deep Fascia Sign.
Aluminium Backing frame. Aluminium cassette System covered in 4mm ACM.

Illuminated steel can Fabricated letters and wordmark with acrylic faces, screwed to cassette system.

Illuminated Aluminium Light extrusion with red & white acrylic face.

Fonts USED: MMC MEDIUM

COLOURS:

-  4mm BLACK ACM
-  RED ACRYLIC
-  WHITE ACRYLIC

Approx. 3.16sqm Illumination Overall
(Incl 50mm Red & White Light Extrusion)

776-780 Pittwater Road, Brookvale NSW 2100
(Our Ref JV106797)

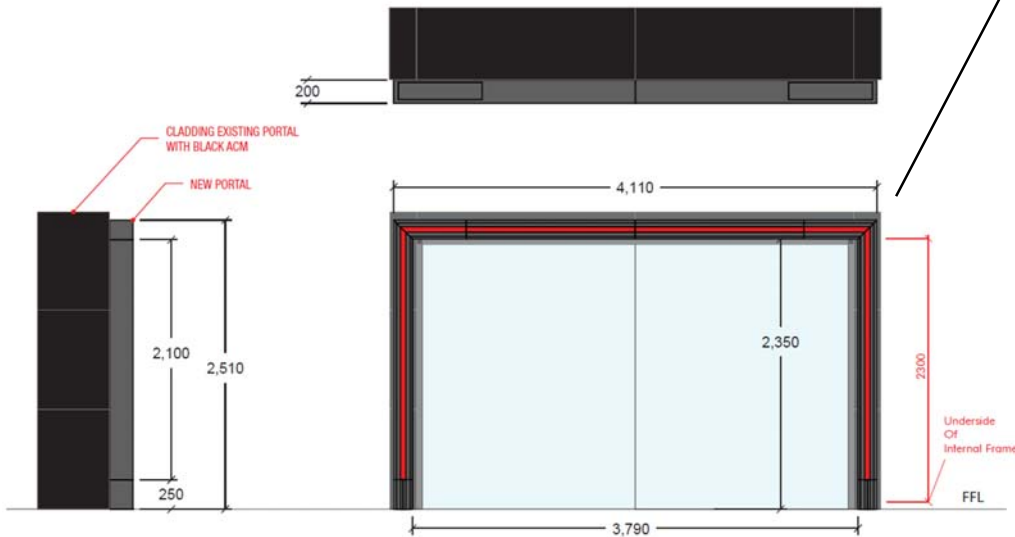
1300 000 367
+612 4968 1212

www.emsigns.com.au
sales@emsigns.com.au

24 Rural Dr, Sandgate NSW 2304
38 Lillie Cres, Tullamarine VIC 3043



Sign 4 - Entry Portal, LED Illuminated (North East)



Approx. 0.43sqm Illumination
(Red Light Extrusion)



ILLUMINATION EXAMPLE

COLOURS:

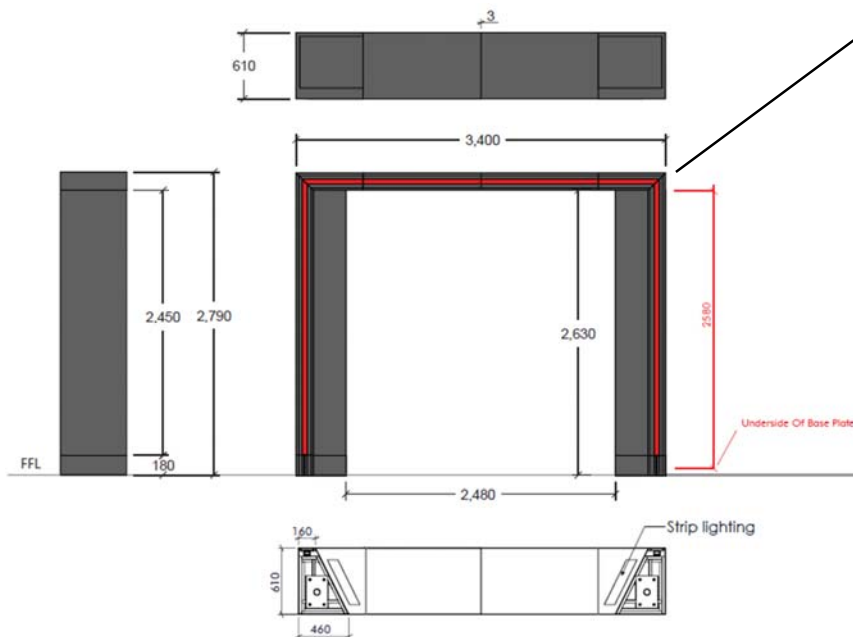
- 4mm BLACK ACM
- RED ACRYLIC

CONSTRUCTION DETAILS:

Entry Portal
4,110mm(W) x 2510mm(H)
4mm black ACM clad around internal aluminium frame.

red acrylic light extrusion in middle of portal

Sign 5 - Entry Portal, LED Illuminated (North West)



Approx. 0.44sqm Illumination
(Red Light Extrusion)

ILLUMINATION EXAMPLE



COLOURS:

- 4mm BLACK ACM
- RED ACRYLIC

CONSTRUCTION DETAILS:

Entry Portal
3,400mm(W) x 2872mm(H)
4mm black ACM clad around internal aluminium frame.

red acrylic light extrusion in middle of portal

776-780 Pittwater Road, Brookvale NSW 2100
(Our Ref JV106797)



1300 000 367
+612 4968 1212



www.emsigns.com.au
sales@emsigns.com.au



24 Rural Dr, Sandgate NSW 2304
38 Lillie Cres, Tullamarine VIC 3043

