

# PROPOSED CLUB REFURBISHMENT

## 932 PITTWATER ROAD, DEE WHY NSW 2099

### CIVIL ENGINEERING PLANS

#### GENERAL NOTES

- THESE DRAWINGS SHALL BE READ IN CONJUNCTION WITH ALL ARCHITECTURAL AND OTHER CONSULTANTS DRAWINGS AND SPECIFICATIONS AND WITH SUCH OTHER WRITTEN INSTRUCTIONS AS MAY BE ISSUED.
- ALL DIMENSIONS RELEVANT TO SETTING OUT AND OFF-SITE WORK SHALL BE VERIFIED BY THE CONTRACTOR BEFORE CONSTRUCTION
- DIMENSIONS SHALL NOT BE OBTAINED BY SCALING THE DRAWINGS.
- ALL DIMENSIONS ON DETAILS ARE IN MILLIMETRES UNLESS STATED OTHERWISE. ALL PLANS AND LEVELS ARE EXPRESSED IN METRES.
- DURING CONSTRUCTION THE CONTRACTOR SHALL BE RESPONSIBLE FOR MAINTAINING THE STRUCTURAL STABILITY OF THE WORKS AND ENSURE NO PARTS BE OVER STRESSED UNDER CONSTRUCTION ACTIVITIES.
- WORKMANSHIP AND MATERIALS ARE TO BE IN ACCORDANCE WITH THE RELEVANT CURRENT S.A. CODES INCLUDING ALL AMENDMENTS, AND THE LOCAL STATUTORY AUTHORITIES, EXCEPT WHERE VARIED BY THE CONTRACT DOCUMENTS.
- THE APPROVAL OF A SUBSTITUTION SHALL BE SOUGHT FROM THE ENGINEER BUT IS NOT AN AUTHORISATION FOR A VARIATION. ANY VARIATIONS INVOLVED MUST BE TAKEN UP WITH THE ARCHITECT OR PROJECT MANAGER BEFORE THE WORK COMMENCES.
- ANY DISCREPANCIES OR OMISSIONS SHALL BE REFERRED TO THE ENGINEER FOR A DECISION BEFORE PROCEEDING WITH THE WORK.
- THE BUILDER SHALL GIVE 48 HOURS NOTICE FOR ALL ENGINEERING INSPECTIONS.
- BUILDING FROM THESE DRAWINGS IS NOT TO COMMENCE UNTIL APPROVED BY THE LOCAL AUTHORITIES
- THE WORD 'ENGINEER' USED IN THESE NOTES REFER TO AN EMPLOYEE OR NOMINATED REPRESENTATIVE OF **ACOR CONSULTANTS PTY.LTD.**

#### EXISTING SERVICES AND FEATURES

- THE CONTRACTOR SHALL ALLOW FOR THE CAPPING OFF, EXCAVATION, REMOVAL AND DISPOSAL IF REQUIRED OF ALL EXISTING SERVICES IN AREAS AFFECTED BY WORKS WITHIN THE CONTRACT AREA, AS SHOWN ON THE DRAWINGS UNLESS DIRECTED OTHERWISE BY THE SUPERINTENDENT.
- THE CONTRACTOR SHALL ENSURE THAT AT ALL TIMES SERVICES TO ALL BUILDINGS NOT AFFECTED BY THE WORKS ARE NOT DISRUPTED.
- PRIOR TO COMMENCEMENT OF ANY WORKS THE CONTRACTOR SHALL GAIN WRITTEN APPROVAL OF HIS PROGRAMME FOR THE RELOCATION/CONSTRUCTION OF TEMPORARY SERVICES.
- EXISTING BUILDINGS, EXTERNAL STRUCTURES, AND TREES SHOWN ON THESE DRAWINGS ARE FEATURES EXISTING PRIOR TO ANY DEMOLITION WORKS.
- CONTRACTOR SHALL CONSTRUCT TEMPORARY SERVICES TO MAINTAIN EXISTING SUPPLY TO BUILDINGS REMAINING IN OPERATION DURING WORKS TO THE SATISFACTION AND APPROVAL OF THE SUPERINTENDENT. ONCE DIVERSION IS COMPLETE AND COMMISSIONED THE CONTRACTOR SHALL REMOVE ALL SUCH TEMPORARY SERVICES AND MAKE GOOD TO THE SATISFACTION OF THE SUPERINTENDENT.
- INTERRUPTION TO SUPPLY OF EXISTING SERVICES SHALL BE DONE SO AS NOT TO CAUSE ANY INCONVENIENCE TO THE PRINCIPAL. CONTRACTOR TO GAIN APPROVAL OF SUPERINTENDENT FOR TIME OF INTERRUPTION.

#### STORMWATER NOTES

- ALL DRAINAGE PIPES LARGER THAN Ø375 SHALL BE CLASS "2" APPROVED SPIGOT AND SOCKET FRC PIPES WITH RUBBER RING JOINTS. (U.N.O.) ALL DOWNPIPE DRAINAGE LINES SHALL BE SEWER GRADE UPVC WITH SOLVENT WELD JOINTS. (U.N.O.)
- EQUIVALENT STRENGTH REINFORCED CONCRETE PIPES MAY BE USED.
- ALL PIPE JUNCTIONS UP TO AND INCLUDING 450 DIA. AND TAPERS SHALL BE VIA PURPOSE MADE FITTINGS.
- MINIMUM GRADE TO STORMWATER LINES TO BE 1%. (U.N.O.)
- CONTRACTOR TO SUPPLY AND INSTALL ALL FITTINGS AND SPECIALS INCLUDING VARIOUS PIPE ADAPTORS TO ENSURE PROPER CONNECTION BETWEEN DISSIMILAR PIPEWORK.
- ALL CONNECTIONS TO EXISTING DRAINAGE PITS SHALL BE MADE IN A TRADESMAN-LIKE MANNER AND THE INTERNAL WALL OF THE PIT AT THE POINT OF ENTRY SHALL BE CEMENT RENDERED TO ENSURE A SMOOTH FINISH.
- PRECAST PITS SHALL NOT BE USED UNLESS WRITTEN APPROVAL IS OBTAINED FROM THE SUPERINTENDENT.
- WHERE TRENCHES ARE IN ROCK, THE PIPE SHALL BE BEDDED ON A MIN. 50MM CONCRETE BED (OR 75MM THICK BED OF 12MM BLUE METAL) UNDER THE BARREL OF THE PIPE. THE PIPE COLLAR AT NO POINT SHALL BEAR ON THE ROCK. IN OTHER THAN ROCK, PIPES SHALL BE LAID ON A 75MM THICK SAND BED. IN ALL CASES BACKFILL THE TRENCH WITH SAND TO 200MM ABOVE THE PIPE. WHERE THE PIPE IS UNDER PAVEMENTS BACKFILL REMAINDER OF TRENCH WITH SAND OR APPROVED GRANULAR BACKFILL COMPACTED IN 150MM LAYERS TO 98% STANDARD MAX. DRY DENSITY.
- BEDDING SHALL BE (U.N.O.) TYPE H1, IN ACCORDANCE WITH CURRENT RELEVANT AUSTRALIAN STANDARDS.
- PROVIDE 3.0M LENGTH OF 100 DIA. SUBSOIL DRAINAGE PIPE WRAPPED IN FABRIC SOCK, AT UPSTREAM END OF EACH PIT.

#### SITEWORKS NOTES

- ORIGIN OF LEVELS :- AUSTRALIAN HEIGHT DATUM (A.H.D.)
- CONTRACTOR MUST VERIFY ALL DIMENSIONS AND EXISTING LEVELS ON SITE PRIOR TO COMMENCEMENT OF WORK.
- ALL WORK IS TO BE UNDERTAKEN IN ACCORDANCE WITH THE DETAILS SHOWN ON THE DRAWINGS, THE SPECIFICATIONS AND THE DIRECTIONS OF THE PRINCIPAL'S REPRESENTATIVE.
- EXISTING SERVICES HAVE BEEN PLOTTED FROM SUPPLIED DATA AND AS SUCH THEIR ACCURACY CANNOT BE GUARANTEED. IT IS THE RESPONSIBILITY OF THE CONTRACTOR TO ESTABLISH THE LOCATION AND LEVEL OF ALL EXISTING SERVICES PRIOR TO THE COMMENCEMENT OF ANY WORK. ANY DISCREPANCIES SHALL BE REPORTED TO THE PRINCIPAL'S REPRESENTATIVE. CLEARANCES SHALL BE OBTAINED FROM THE RELEVANT SERVICE AUTHORITY.
- WHERE NEW WORKS ABUT EXISTING THE CONTRACTOR SHALL ENSURE THAT A SMOOTH EVEN PROFILE, FREE FROM ABRUPT CHANGES IS OBTAINED.
- THE CONTRACTOR SHALL ARRANGE ALL SURVEY SETOUT TO BE CARRIED OUT BY A REGISTERED SURVEYOR.
- CARE IS TO BE TAKEN WHEN EXCAVATING NEAR EXISTING SERVICES. NO MECHANICAL EXCAVATIONS ARE TO BE UNDERTAKEN OVER COMMUNICATIONS OR ELECTRICAL SERVICES. HAND EXCAVATE IN THESE AREAS.
- ALL SERVICE TRENCHES UNDER VEHICULAR PAVEMENTS SHALL BE BACKFILLED WITH AN APPROVED NON-NATURAL GRANULAR MATERIAL AND COMPACTED TO 98% STANDARD MAXIMUM DRY DENSITY IN ACCORDANCE WITH AS 1289 5.1.1.
- ALL TRENCH BACKFILL MATERIAL SHALL BE COMPACTED TO THE SAME DENSITY AS THE ADJACENT MATERIAL.
- ON COMPLETION OF PIPE INSTALLATION ALL DISTURBED AREAS MUST BE RESTORED TO ORIGINAL, INCLUDING KERBS, FOOTPATHS, CONCRETE AREAS, GRAVEL AND GRASSED AREAS AND ROAD PAVEMENTS.
- PROVIDE 12mm WIDE EXPANDING CORK JOINTS BETWEEN CONCRETE PAVEMENTS AND ALL BUILDINGS, WALLS, FOOTINGS, COLUMNS, KERBS, DISH DRAINS, GRATED DRAINS, BOLLARD FOOTINGS ETC
- CONTRACTOR TO OBTAIN ALL AUTHORITY APPROVALS.
- ALL BATTERS TO BE GRASSED LINED WITH MINIMUM 100 TOPSOIL AND APPROVED COUCH LAID AS TURF.
- MAKE SMOOTH TRANSITION TO EXISTING SERVICES AND MAKE GOOD.
- THE CONTRACTOR SHALL PROVIDE ALL TEMPORARY DIVERSION DRAINS AND MOUNDS TO ENSURE THAT AT ALL TIMES EXPOSED SURFACES ARE FREE DRAINING AND WHERE NECESSARY EXCAVATE SUMPS AND PROVIDE PUMPING EQUIPMENT TO DRAIN EXPOSED AREAS.
- THESE PLANS SHALL BE READ IN CONJUNCTION WITH APPROVED ARCHITECTURAL, STRUCTURAL, HYDRAULIC AND MECHANICAL DRAWINGS AND SPECIFICATIONS.
- TRENCHES THROUGH EXISTING ROAD AND CONCRETE PAVEMENTS SHALL BE SAWCUT TO FULL DEPTH OF CONCRETE AND A MIN 50mm IN BITUMINOUS PAVING.
- ALL BRANCH GAS AND WATER SERVICES UNDER DRIVEWAYS AND BRICK PAVING SHALL BE LOCATED IN Ø80 UPVC SEWER GRADE CONDUITS EXTENDING A MIN OF 500mm PAST PAVING.
- ON COMPLETION OF WORKS ALL DISTURBED AREAS MUST BE RESTORED TO ORIGINAL INCLUDING, BUT NOT LIMITED TO, KERBS, FOOTPATHS, CONCRETE AREAS, GRASS AND LANDSCAPED AREAS.

#### EROSION AND SEDIMENT CONTROL NOTES

##### GENERAL INSTRUCTIONS

- THIS PLAN IS TO BE READ IN CONJUNCTION WITH THE ENGINEERING PLANS, AND ANY OTHER PLANS OR WRITTEN INSTRUCTIONS THAT MAY BE ISSUED AND RELATING TO DEVELOPMENT AT THE SUBJECT SITE.
- THE SITE SUPERINTENDENT WILL ENSURE THAT ALL SOIL AND WATER MANAGEMENT WORKS ARE LOCATED AS INSTRUCTED IN THIS SPECIFICATION.
- ALL BUILDERS AND SUB-CONTRACTORS WILL BE INFORMED OF THEIR RESPONSIBILITIES IN MINIMISING THE POTENTIAL FOR SOIL EROSION AND POLLUTION TO DOWNSLOPE LANDS AND WATERWAYS.

##### CONSTRUCTION SEQUENCE

- THE SOIL EROSION POTENTIAL ON THIS SITE SHALL BE MINIMISED. HENCE WORKS SHALL BE UNDERTAKEN IN THE FOLLOWING SEQUENCE :
  - INSTALL SEDIMENT FENCES, TEMPORARY CONSTRUCTION EXIT AND SANDBAG KERB INLET SEDIMENT TRAP.
  - UNDERTAKE SITE DEVELOPMENT WORKS IN ACCORDANCE WITH THE ENGINEERING PLANS, PHASE DEVELOPMENT SO THAT LAND DISTURBANCE IS CONFINED TO AREAS OF WORKABLE SIZE.

##### EROSION CONTROL

- DURING WINDY CONDITIONS, LARGE, UNPROTECTED AREAS WILL BE KEPT MOIST (NOT WET) BY SPRINKLING WITH WATER TO KEEP DUST UNDER CONTROL.
- FINAL SITE LANDSCAPING WILL BE UNDERTAKEN AS SOON AS POSSIBLE AND WITHIN 20 WORKING DAYS FROM COMPLETION OF CONSTRUCTION ACTIVITIES.

##### FENCING

- STOCKPILES WILL NOT BE LOCATED WITHIN 2 METRES OF HAZARD AREAS, INCLUDING LIKELY AREAS OF CONCENTRATED OR HIGH VELOCITY FLOWS SUCH AS WATERWAYS. WHERE THEY ARE BETWEEN 2 AND 5 METRES FROM SUCH AREAS, SPECIAL SEDIMENT CONTROL MEASURES SHOULD BE TAKEN TO MINIMISE POSSIBLE POLLUTION TO DOWNSLOPE WATERS, E.G. THROUGH INSTALLATION OF SEDIMENT FENCING.
- ANY SAND USED IN THE CONCRETE CURING PROCESS (SPREAD OVER THE SURFACE) WILL BE REMOVED AS SOON AS POSSIBLE AND WITHIN 10 WORKING DAYS FROM PLACEMENT.
- WATER WILL BE PREVENTED FROM ENTERING THE PERMANENT DRAINAGE SYSTEM UNLESS IT IS RELATIVELY SEDIMENT FREE, I.E. THE CATCHMENT AREA HAS BEEN PERMANENTLY LANDSCAPED AND/OR ANY LIKELY SEDIMENT HAS BEEN FILTERED THROUGH AN APPROVED STRUCTURE.

- TEMPORARY SOIL AND WATER MANAGEMENT STRUCTURES WILL BE REMOVED ONLY AFTER THE LANDS THEY ARE PROTECTING ARE REHABILITATED.

##### OTHER MATTERS

- ACCEPTABLE RECEPTORS WILL BE PROVIDED FOR CONCRETE AND MORTAR SLURRIES, PAINTS, ACID WASHINGS, LIGHT-WEIGHT WASTE MATERIALS AND LITTER.
- RECEPTORS FOR CONCRETE AND MORTAR SLURRIES, PAINTS, ACID WASHINGS, LIGHT-WEIGHT WASTE MATERIALS AND LITTER ARE TO BE EMPTIED AS NECESSARY. DISPOSAL OF WASTE SHALL BE IN A MANNER APPROVED BY THE SITE SUPERINTENDENT.

##### SITE INSPECTION & MAINTENANCE

- EROSION AND SEDIMENT CONTROL MEASURES SHALL BE INSPECTED AFTER RAINFALL EVENTS TO ENSURE THAT THEY OPERATE EFFECTIVELY. REPAIR AND OR MAINTENANCE SHALL BE UNDERTAKEN AS REQUIRED.

#### CIVIL LEGEND

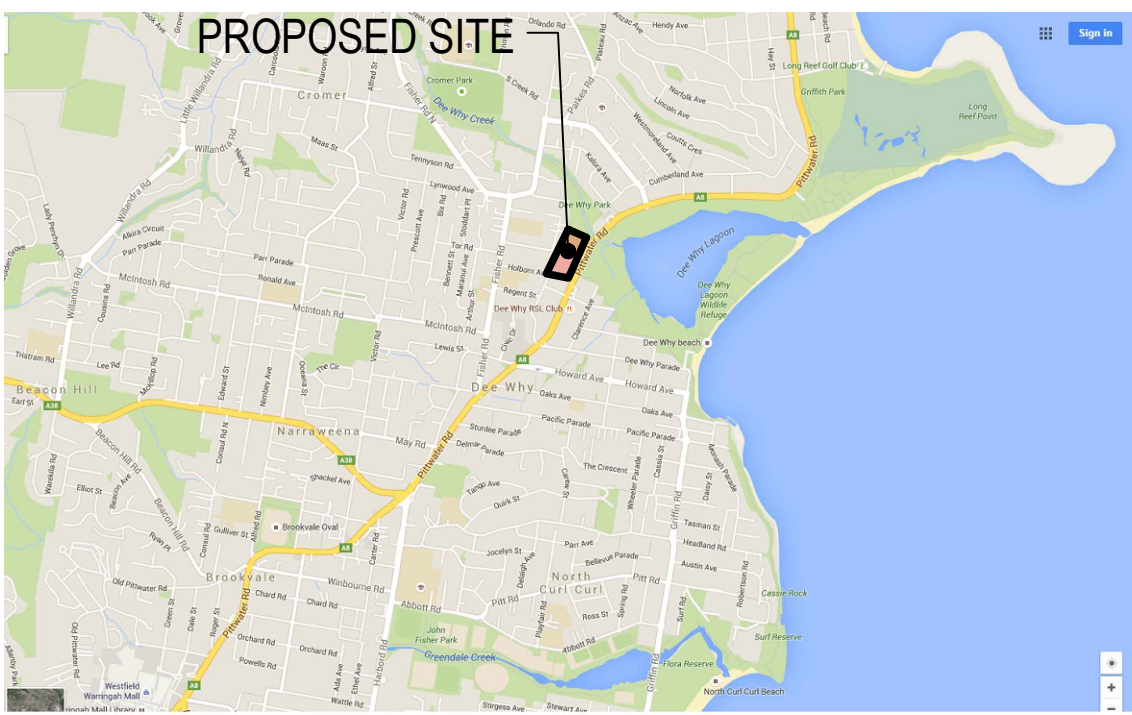
	EXISTING OVERHEAD POWER
	EXISTING WATER SERVICE
	EXISTING SEWER SERVICE
	EXISTING STORMWATER SERVICE
	EXISTING TELECOM SERVICE
	REDUNDANT STORMWATER LINE
	PROPOSED SURFACE LEVELS
	GRATED DRAIN
	PROPOSED STORMWATER DRAINAGE PITS
	PROPOSED STORMWATER DRAINAGE LINE
	ENABLING WORKS STORMWATER DRAINAGE LINE
	FINISHED FLOOR LEVEL
	OVERLAND FLOW PATH
	OSD

#### SOIL EROSION AND SEDIMENT CONTROL LEGEND

	SEDIMENT CONTROL FENCE
	INLET TRAP
	TEMPORARY STABILISED CONSTRUCTION EXIT
	SANDBAG SEDIMENT TRAP
	SEDIMENT CONTROL TANK

#### DRAWING LIST

C1.01	COVER SHEET, NOTES AND LEGENDS
C1.05	DETAILS SHEET 1
C1.06	DETAILS SHEET 2
C1.07	ENABLING WORKS - DETAILS SHEET 1
C2.01	STORMWATER MANAGEMENT PLAN
C3.01	SOIL EROSION & SEDIMENT CONTROL PLAN
C3.02	SOIL EROSION & SEDIMENT CONTROL DETAILS
C4.01	STORMWATER ENABLING WORKS PLAN



#### LOCALITY PLAN

N.T.S.

#### DIAL BEFORE YOU DIG



IMPORTANT: THE CONTRACTOR IS TO MAINTAIN A CURRENT SET OF "DIAL BEFORE YOU DIG" DRAWINGS ON SITE AT ALL TIMES.

NOT FOR CONSTRUCTION

© COPYRIGHT of this design and plan is the property of ACOR Consultants Pty Ltd. ACN 079 306 246 ABN 40 079 306 246, all rights reserved. It must not be used, modified, reproduced or copied wholly or in part without written permission from ACOR Consultants Pty Ltd.

This drawing has been assigned an electronic code that signifies the drawing has been checked and approved by:

E	ISSUE FOR TENDER	20.06.17	DW	MB	North
D	ISSUE FOR COORDINATION	15.06.17	DW	MB	
C	ISSUE FOR DEVELOPMENT APPLICATION	20.03.17	DW	MB	
B	ISSUE FOR DEVELOPMENT APPLICATION	16.03.17	DW	MB	
Issue	Description	Date	Drawn	Approved	

Client  
**DEE WHY RSL CLUB**

9321 PITTWATER ROAD  
DEE WHY NSW 2099

Architect  
**ALTIS**  
architecture

SUITE 123/26-32 PIRRAMA ROAD  
PYRMONT NSW 2009  
PHONE : 02 9364 9000

**AcOR**  
CONSULTANTS

ENGINEERS | MANAGERS | INFRASTRUCTURE PLANNERS | DEVELOPMENT CONSULTANTS

**ACOR Consultants Pty Ltd**  
Level 1, 24 Falcon Street  
Crows Nest NSW 2065  
T +61 2 9438 5098



Project  
**PROPOSED CLUB REFURBISHMENT  
DEE WHY RSL**

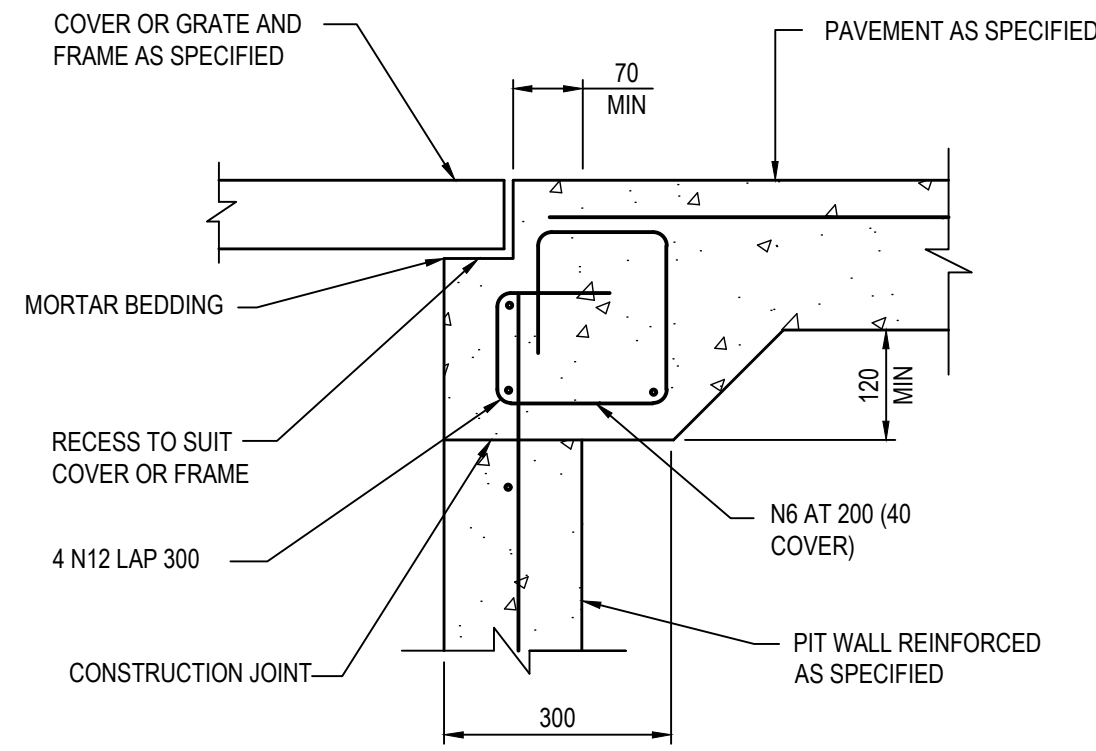
932 PITWATER ROAD  
DEE WHY NSW 2099

Drawing Title  
COVER SHEET, NOTES AND LEGENDS

Drawn DW	Date 13.04.16	Scale N.T.S	A1	Q.A. Check NP	Date 10.03.17
Designed MB	Project No. <b>SY160161</b>	Dwg. No.		Issue C1.01	

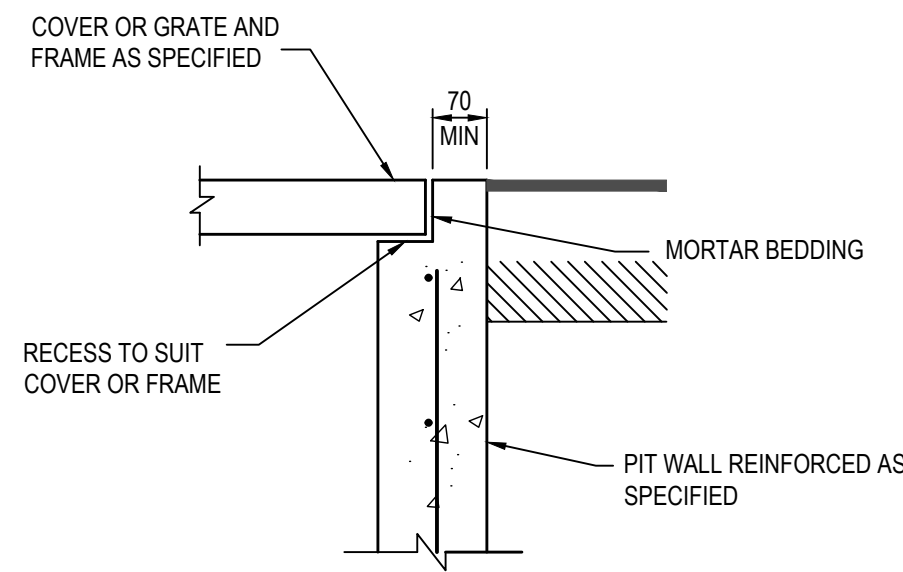
25/07/2016 09:18 C:\new\2016\Drawings\SY160161 - C1.01.dwg





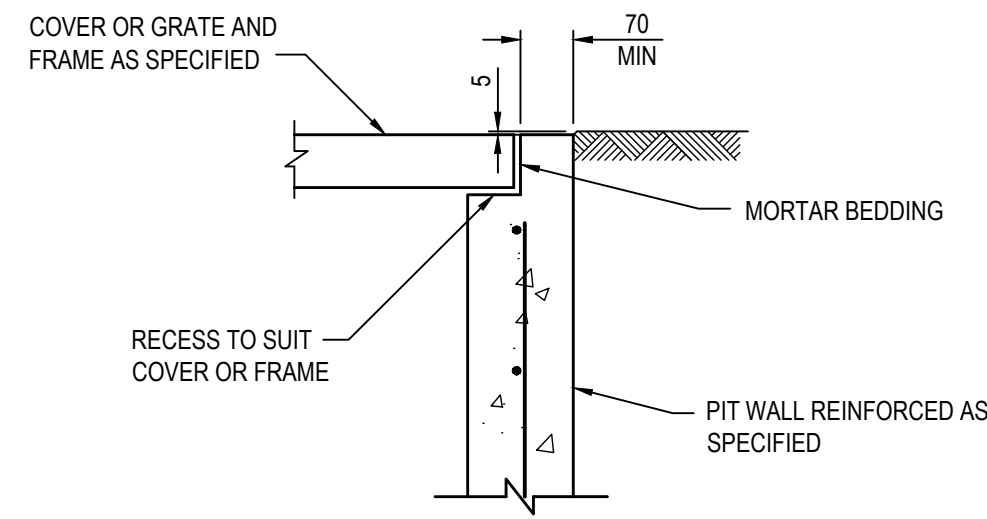
PIT EDGE DETAIL "B"

SCALE 1:10



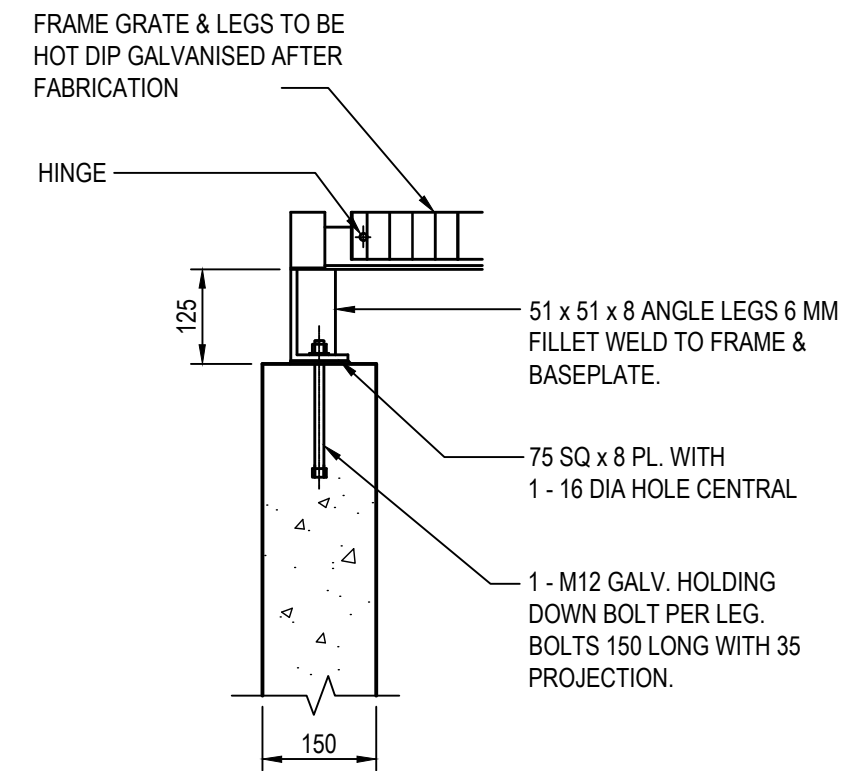
PIT EDGE DETAIL "C"

SCALE 1:10



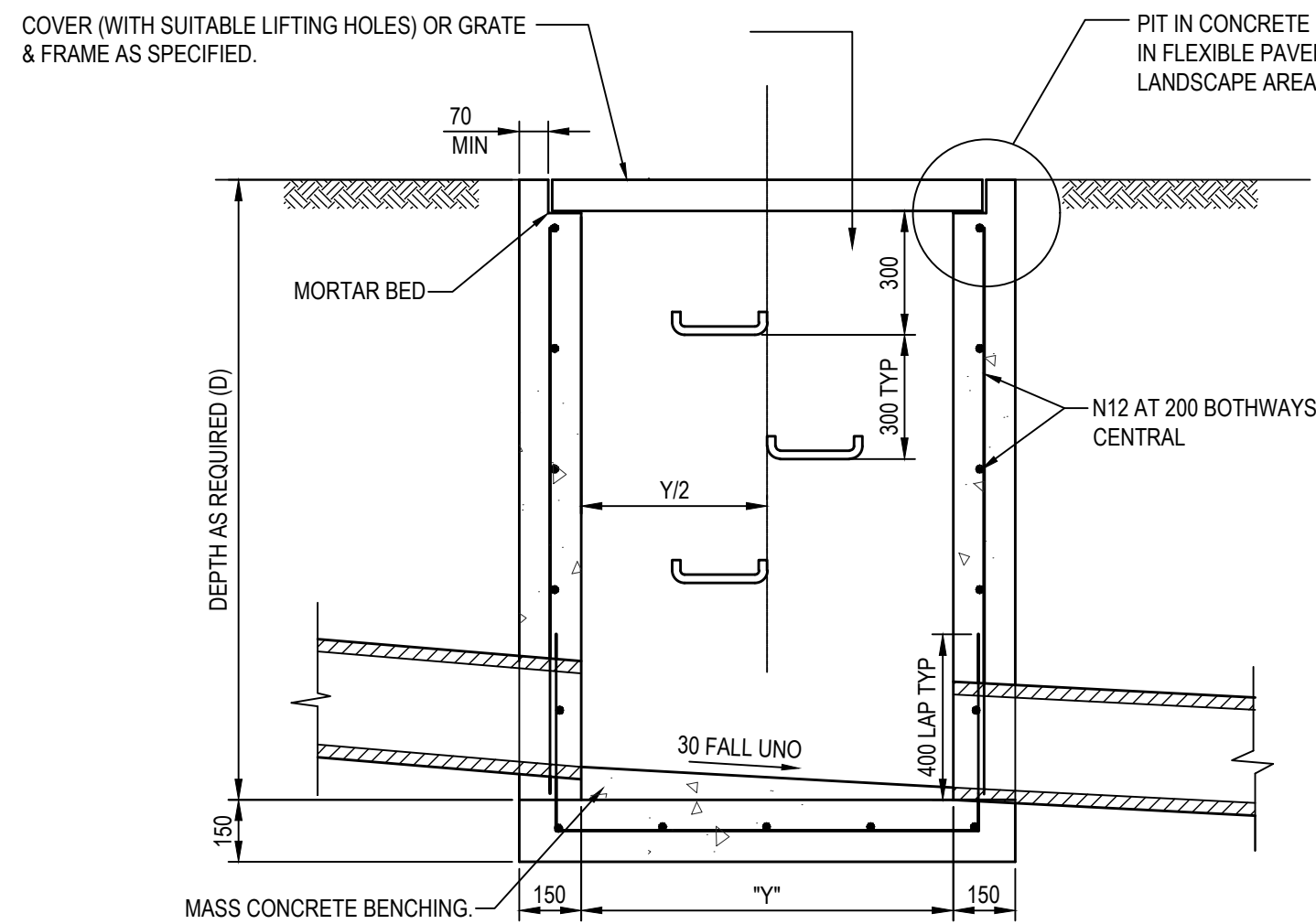
PIT EDGE DETAIL "D"

SCALE 1:10



SURCHARGE PIT EDGE DETAIL

SCALE 1:10

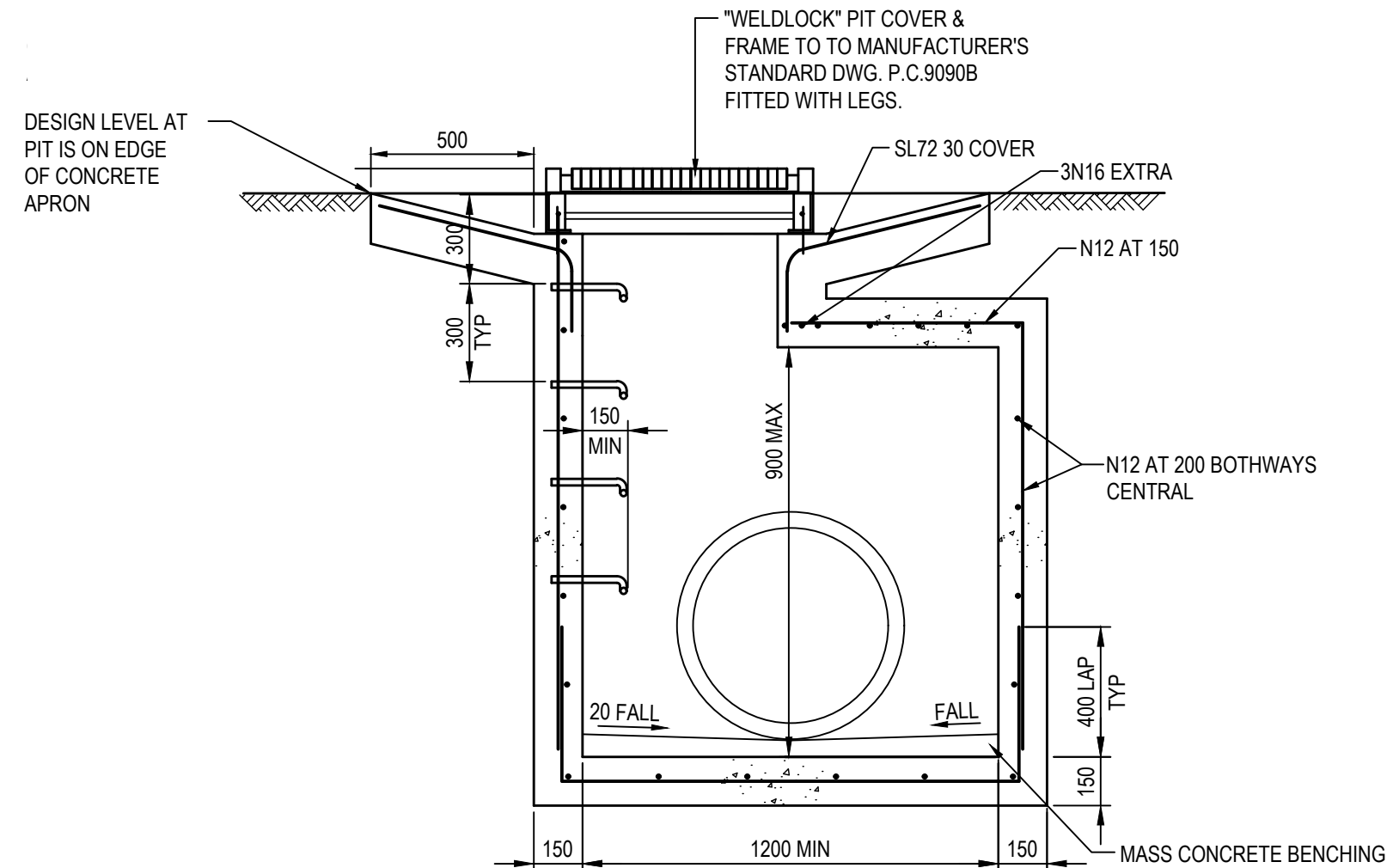


SECTION 2

SCALE 1:20

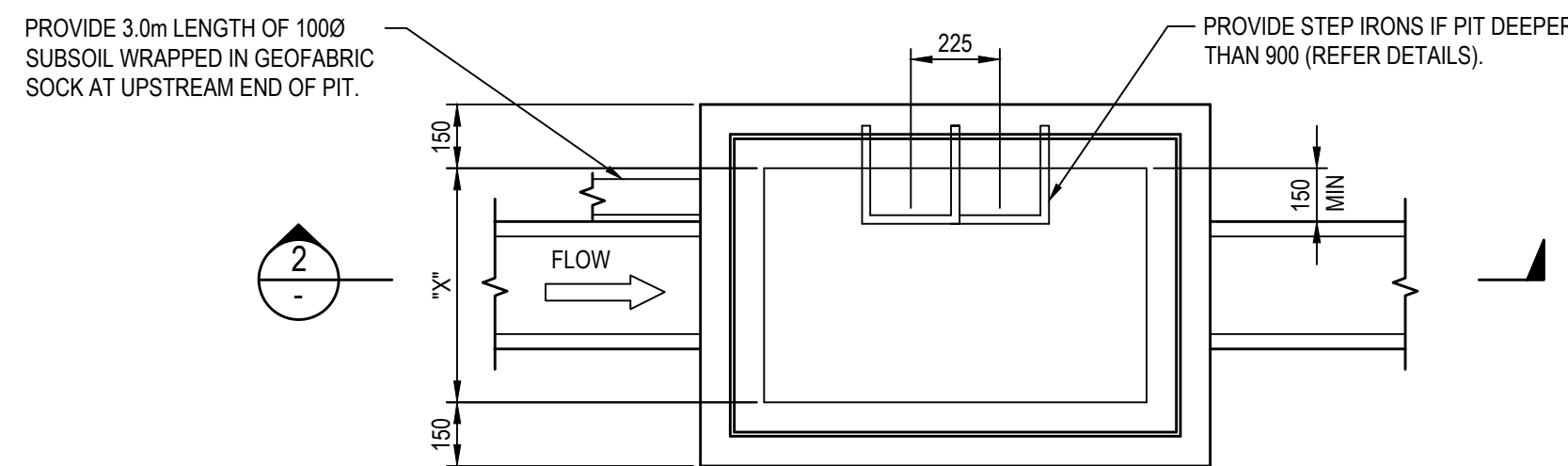
MINIMUM INTERNAL PIT DIMENSIONS			
"D"	"X"	"Y"	
D ≤ 600	450	450"	
D ≤ 900	600	600"	
D ≤ 1200	600	900	
D > 1200	900	900	

NOTE: PITS DENOTED \* SHALL BE USED ONLY WHERE SPECIFIED IN DRAINAGE SCHEDULE OR ON PLAN.



SECTION 1

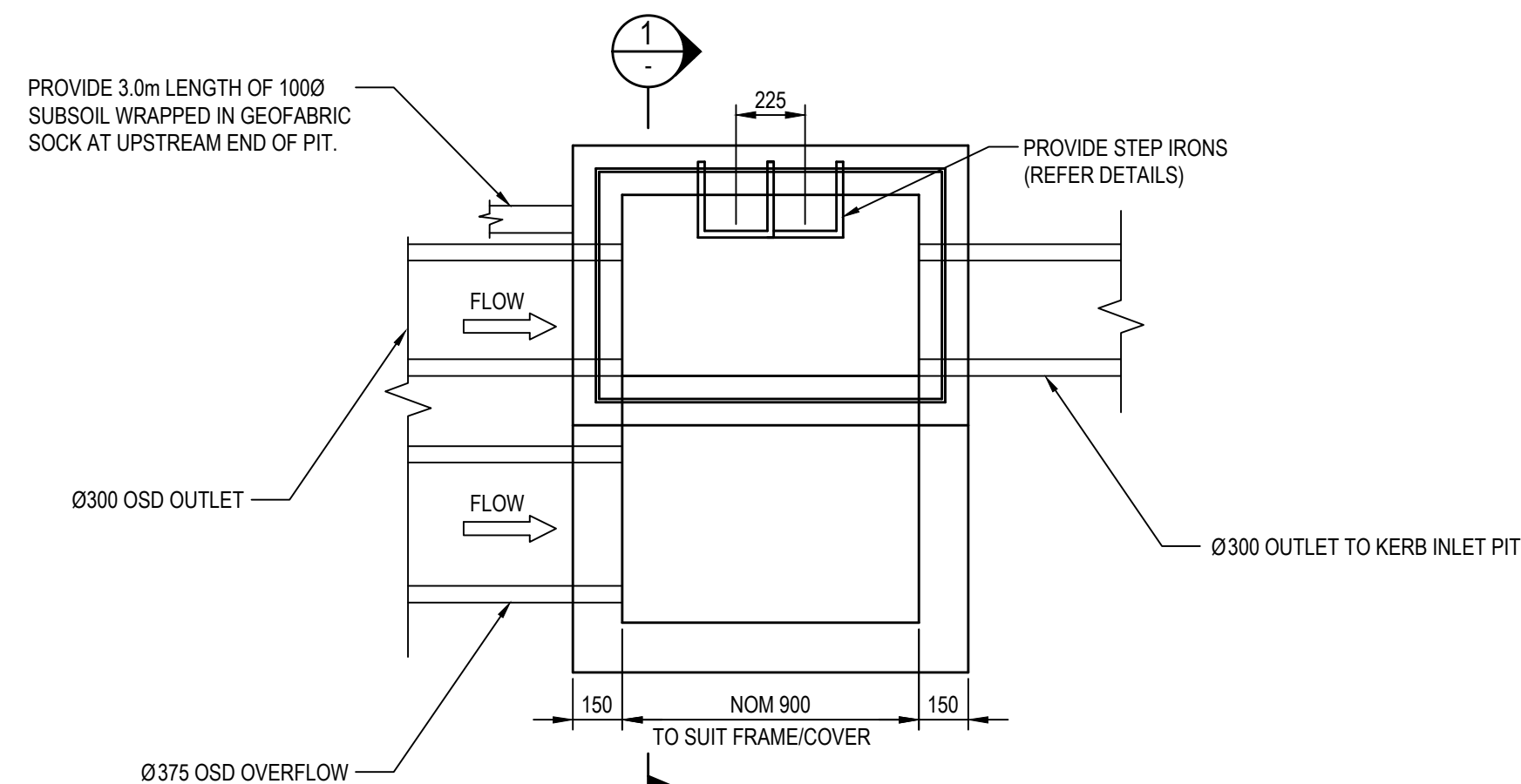
SCALE 1:20



PLAN

SCALE 1:20

TYPICAL SURFACE INLET/JUNCTION PIT



PLAN

SCALE 1:20

SURCHARGE PIT - HAUNCHED CHAMBER

SCALE 1:20

© COPYRIGHT of this design and plan is the property of ACOR Consultants Pty Ltd. ACN 079 306 246 ABN 40 079 306 246, all rights reserved. It must not be used, modified, reproduced or copied wholly or in part without written permission from ACOR Consultants Pty Ltd.

This drawing has been assigned an electronic code that signifies the drawing has been checked and approved by:

Issue	Description	Date	Drawn	Approved
E	ISSUE FOR SECTION 96	13.03.18	DK	MB
D	ISSUE FOR REQUEST FOR TENDER	18.07.17	GP	MB
C	ISSUE FOR COORDINATION	07.07.17	KR	MB
B	RE-ISSUE FOR DEVELOPMENT APPLICATION	20.03.17	DW	MB

Client  
DEE WHY RSL CLUB

9321 PITWATER ROAD  
DEE WHY NSW 2099

Architect

ALTIS  
architecture

SUITE 123/26-32 PIRRAMA ROAD  
PYRMONT NSW 2009  
PHONE : 02 9364 9000

ACOR  
CONSULTANTS

ENGINEERS | MANAGERS | INFRASTRUCTURE PLANNERS | DEVELOPMENT CONSULTANTS

ACOR Consultants Pty Ltd

Level 1, 24 Falcon Street  
Crows Nest NSW 2065  
T +61 2 9438 5098

932 PITWATER ROAD  
DEE WHY NSW 2099

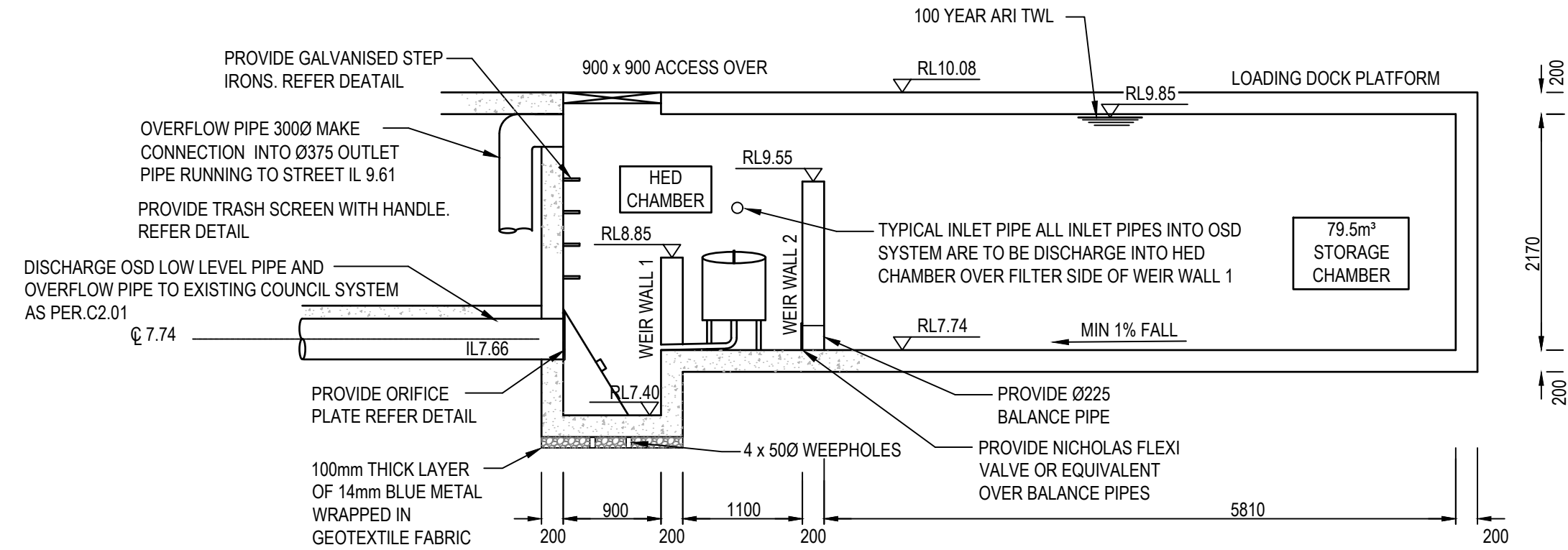
Project

PROPOSED CLUB REFURBISHMENT  
DEE WHY RSL

Drawing Title  
DETAILS SHEET 1

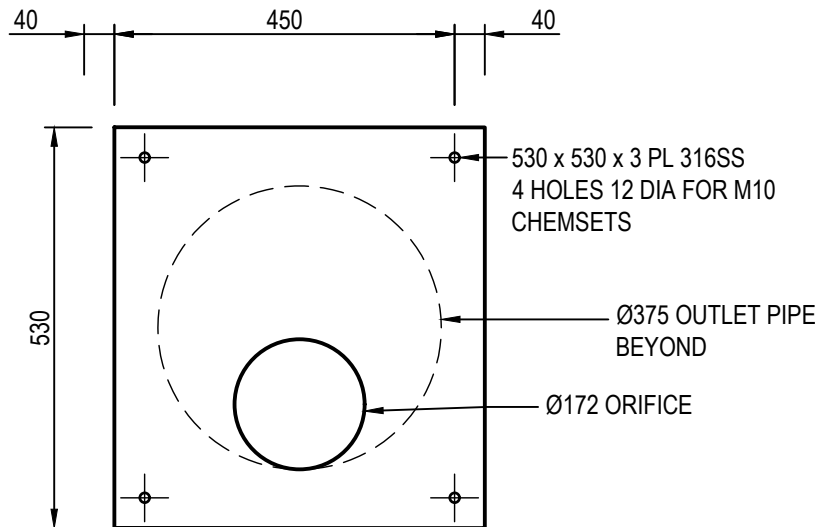
Drawn	Date	Scale	A1	G.A. Check	Date
DW	13.04.16	N.T.S		NP	10.03.17
Designed	Project No.	Dwg. No.	Issue		
MB	SY160161	C1.05	E		

TENDER ISSUE  
NOT FOR CONSTRUCTION

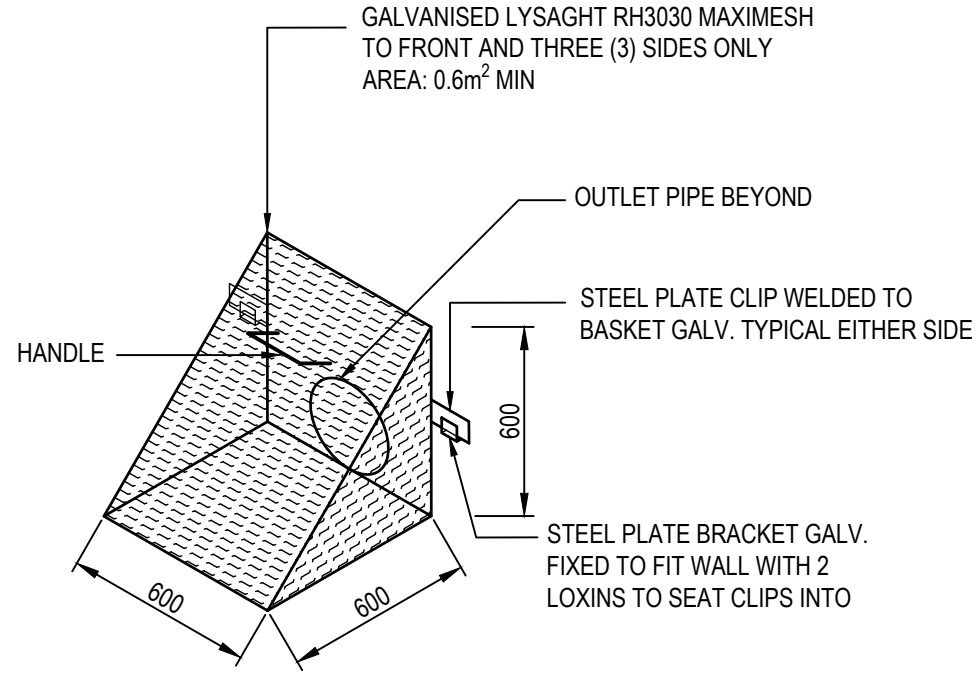


SECTION A  
SCALE = 1:50

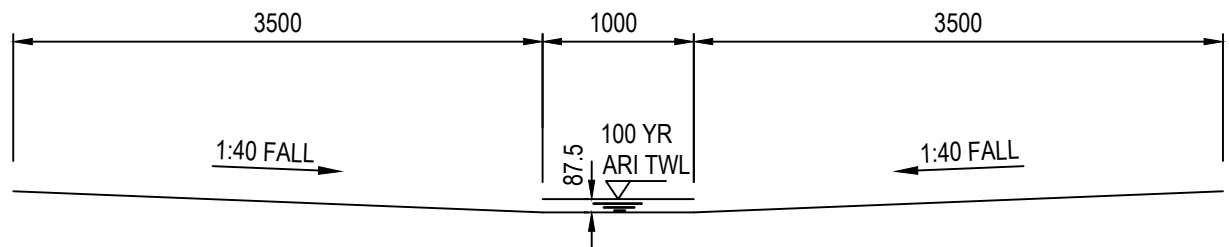
- NOTES:
1. ALL WATER PROOFING TO STRUCTURAL DETAIL.
  2. ALL CONCRETE AND REINFORCING TO STRUCTURAL ENGINEERS DETAIL.
  3. ALL INLET PIPES TO DISCHARGE INTO HIGH EARLY DISCHARGE (HED) CHAMBER ON FILTER SIDE OF WEIR WALL 1.



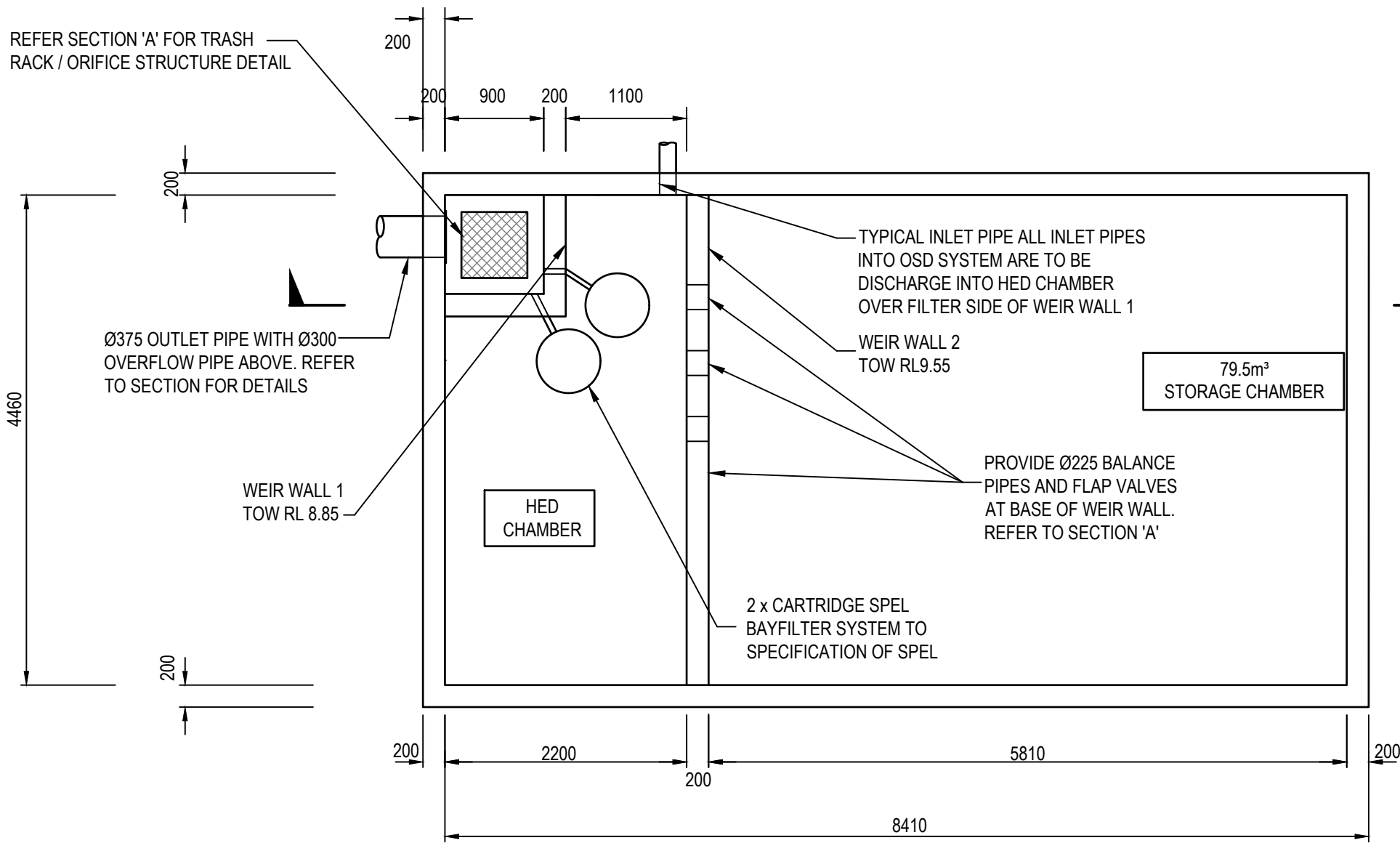
ORIFICE PLATE DETAIL  
SCALE 1:10



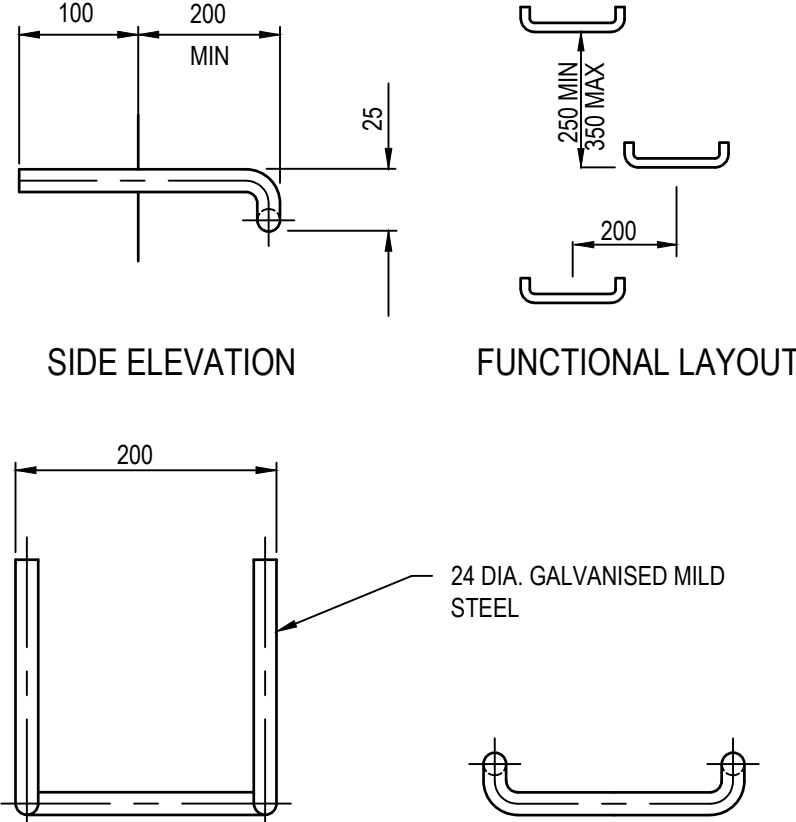
TRASH SCREEN DETAIL  
NOT TO SCALE



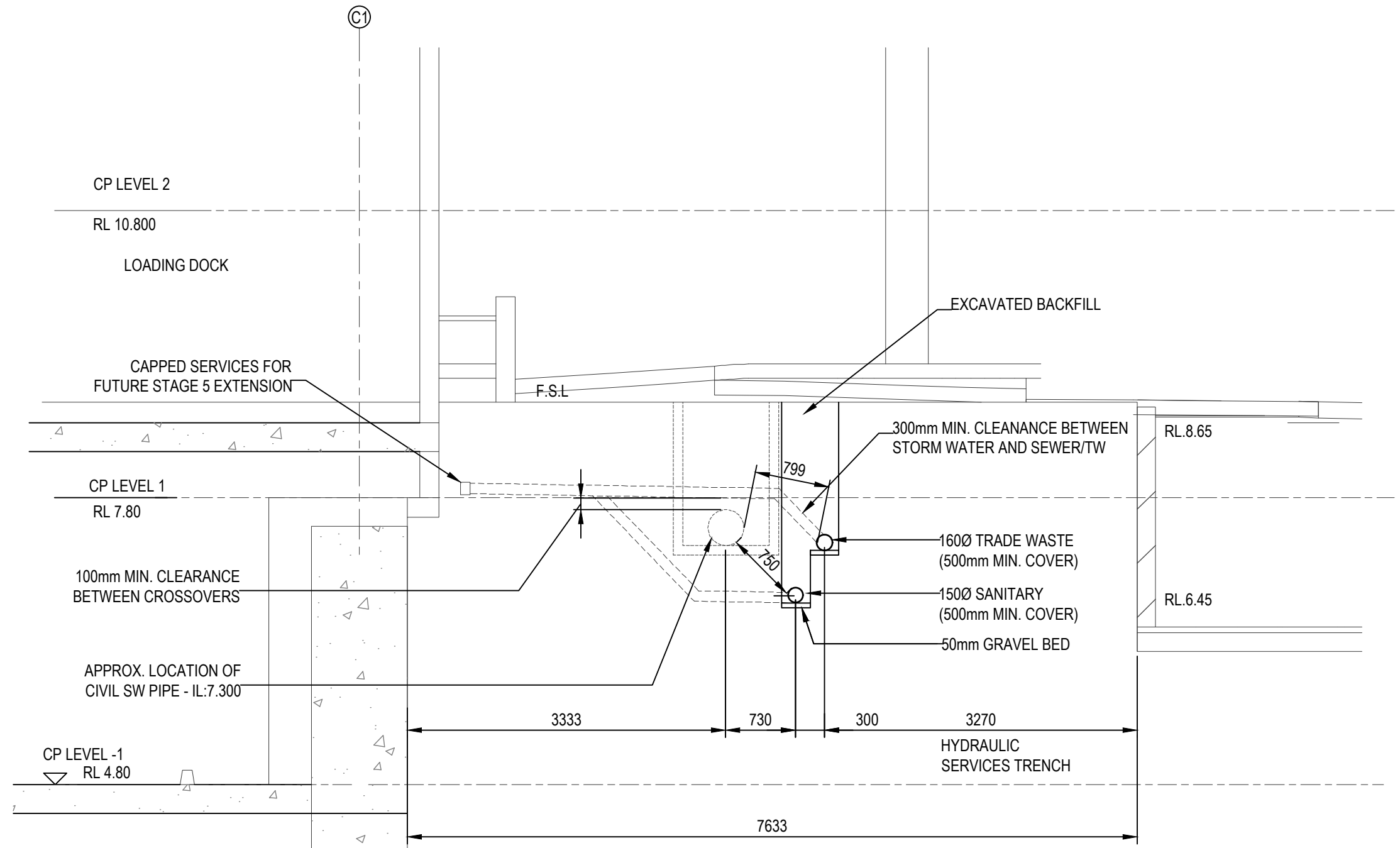
OVERLAND FLOW CHANNEL - AISLE  
SECTION A  
SCALE = 1:50



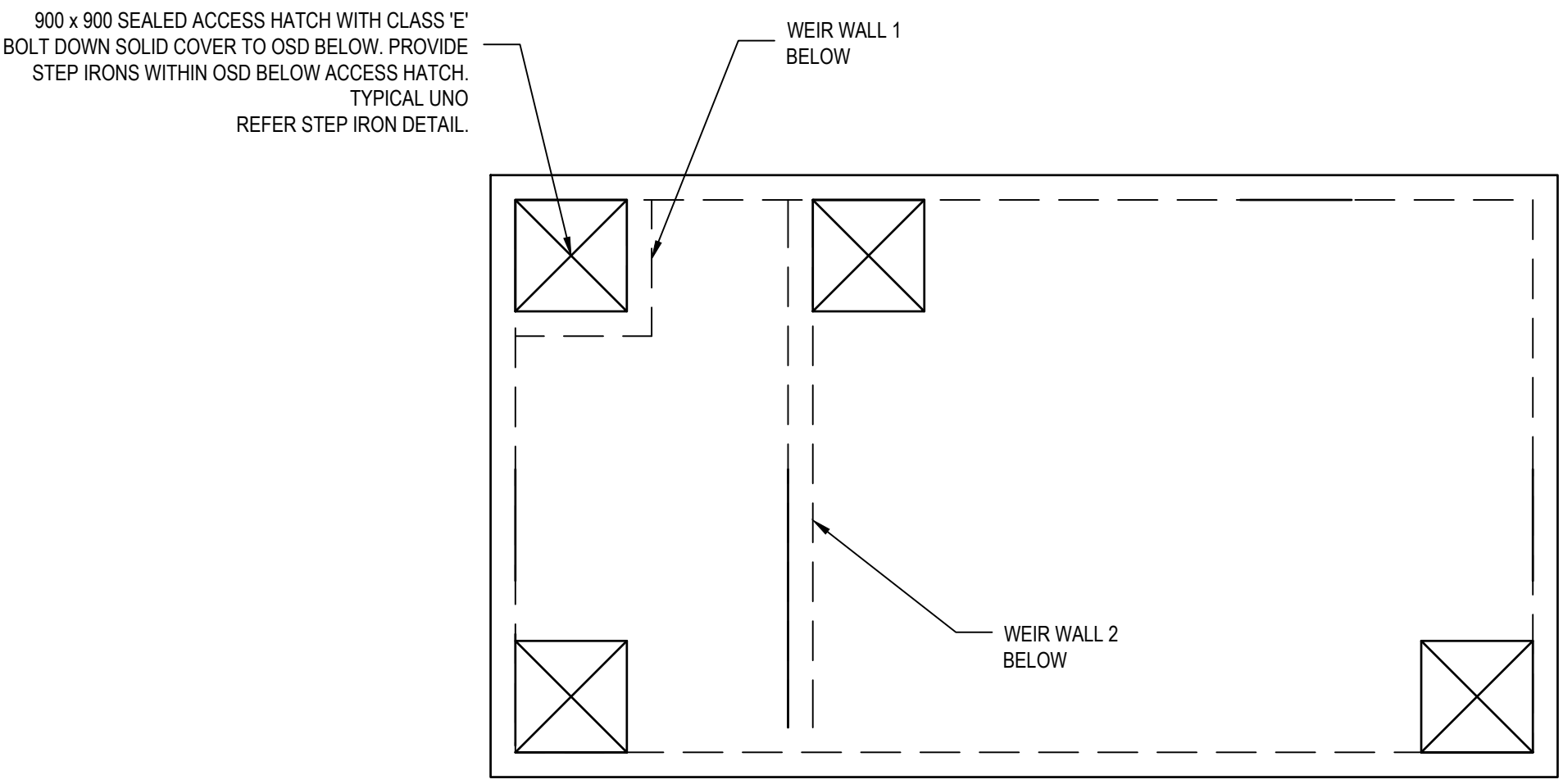
OSD PLAN  
SCALE 1:50



STEP IRON DETAIL  
N.T.S.

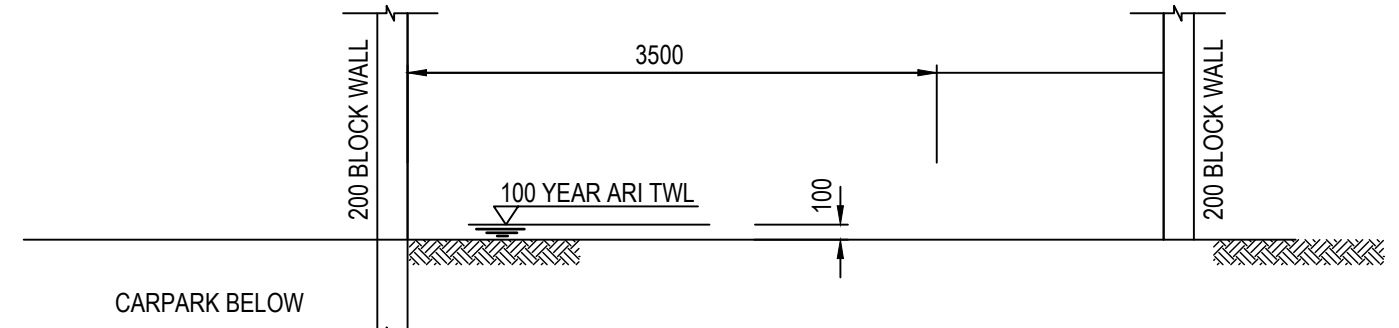


TYPICAL SHARED TRENCH DETAIL  
SCALE : N.T.S.



OSD ACCESS HATCH PLAN  
SCALE 1:50

DESIGN CRITERIA	
TOTAL SITE AREA =	3900.m²
DESIGN METHOD =	ILSAX
PRE-DEVELOPED IMPERVIOUS AREA =	0. %
POST-DEVELOPED IMPERVIOUS AREA =	99. %
POST DEVELOPED FLOWS (l/s) =	Q <sub>5</sub> = 84. Q <sub>10</sub> = 84. Q <sub>100</sub> = 171.
PRE DEVELOPED FLOWS (l/s) =	Q <sub>5</sub> = 85. Q <sub>10</sub> = 132. Q <sub>100</sub> = 178.
PORTION OF SITE THROUGH OSD SYSTEM =	100 %
REQUIRED STORAGE VOLUME =	71...m³
ACTUAL STORAGE VOLUME =	79.5...m³



OVERLAND FLOW CHANNEL 1.3m WIDE

SECTION B  
SCALE = 1:50

FLOW THROUGH SWALE FROM  
UPSTREAM CATCHMENT.

Q = C.I.A. / 3600  
C = 1.0  
I = 206mm/hr (100yr , 10min)  
A = 5252m²  
Q = 300L/S  
CAPACITY OF SECTIONS.  
3.5m x 0.2m CULVERT = 1400L/S  
SECTION A = 310L/S @ 87.5mm DEEP  
SECTION B = 650L/S @ 100mm DEEP

TENDER ISSUE  
NOT FOR CONSTRUCTION

© COPYRIGHT of this design and plan is the property of ACOR Consultants Pty Ltd. ACN 079 306 246 ABN 40 079 306 246, all rights reserved. It must not be used, modified, reproduced or copied wholly or in part without written permission from ACOR Consultants Pty Ltd.

This drawing has been assigned an electronic code that signifies the drawing has been checked and approved by:					
E	ISSUE FOR SECTION 96	13.03.18	DK	MB	
D	ISSUE FOR REQUEST FOR TENDER	18.07.17	GP	MB	
C	ISSUE FOR COORDINATION	07.07.17	KR	MB	
B	RE-ISSUE FOR DEVELOPMENT APPLICATION	20.03.17	DW	MB	
Issue	Description	Date	Drawn	Approved	
1	1cm at full size	10cm	20cm		

Client  
**DEE WHY RSL CLUB**

9321 PITTWATER ROAD  
DEE WHY NSW 2099

Architect  
**ALTIS**  
architecture

SUITE 123/26-32 PIRRAMA ROAD  
PYRMONT NSW 2009  
PHONE : 02 9364 9000

**ACOR**  
CONSULTANTS

ENGINEERS | MANAGERS | INFRASTRUCTURE PLANNERS | DEVELOPMENT CONSULTANTS

**ACOR Consultants Pty Ltd**  
Level 1, 24 Falcon Street  
Crowns Nest NSW 2065  
T +61 2 9438 5098

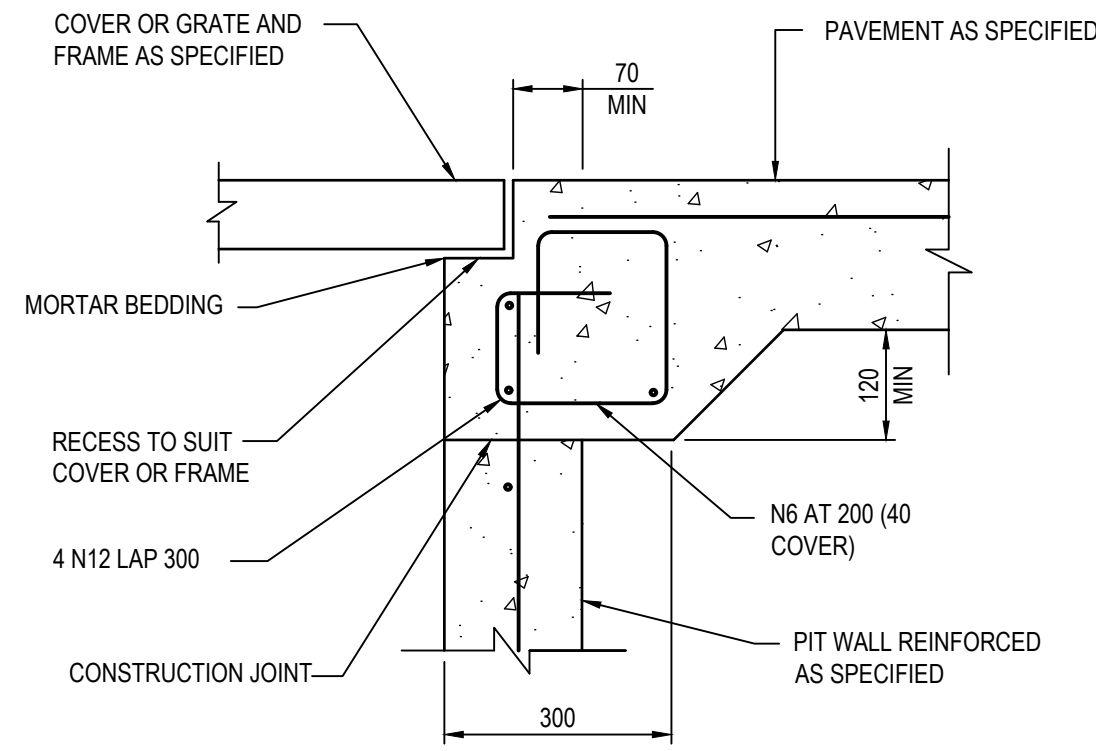
932 PITWATER ROAD  
DEE WHY NSW 2099

Project  
**PROPOSED CLUB REFURBISHMENT  
DEE WHY RSL**

Drawing Title  
**DETAILS SHEET 2**

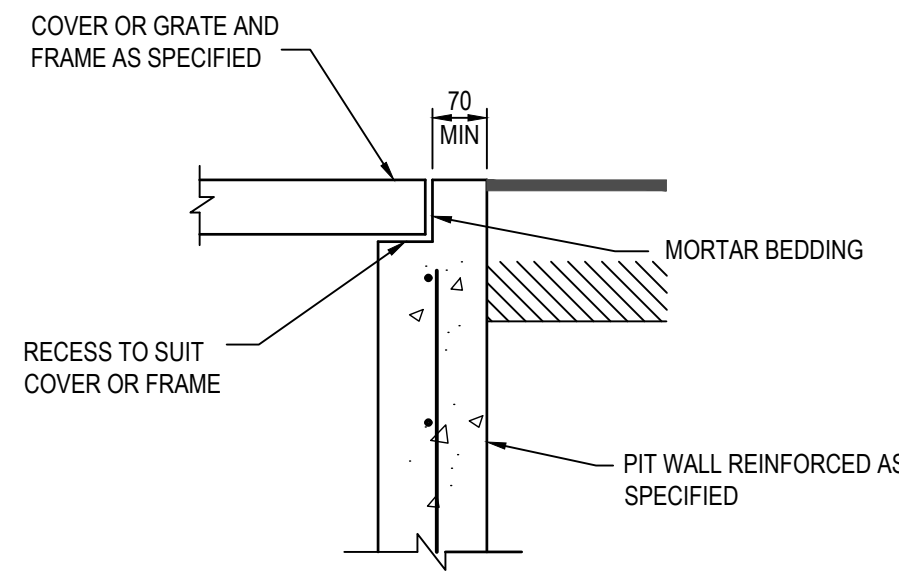
Drawn DW	Date 13.04.16	Scale 1:50	A1	Q.A. Check NP	Date 10.03.17
Designed MB	Project No. SY160161	Dwg No.	C1.06	Issue E	





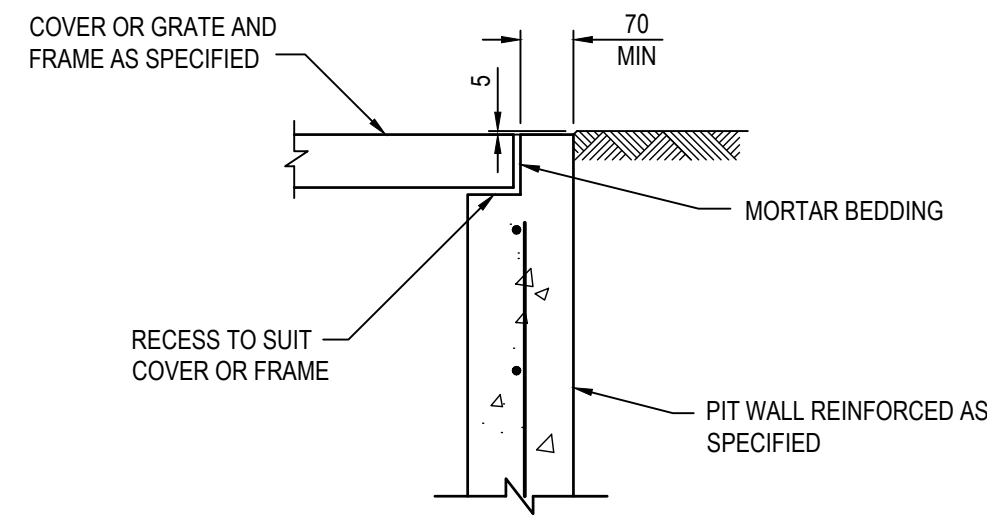
**PIT EDGE DETAIL "B"**

SCALE 1:10



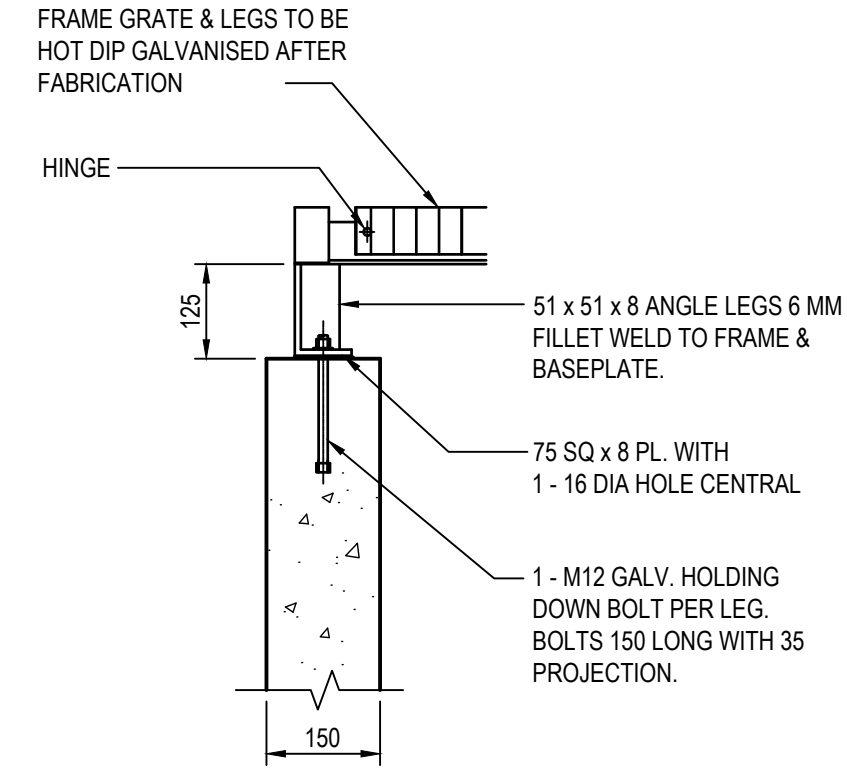
**PIT EDGE DETAIL "C"**

SCALE 1:10



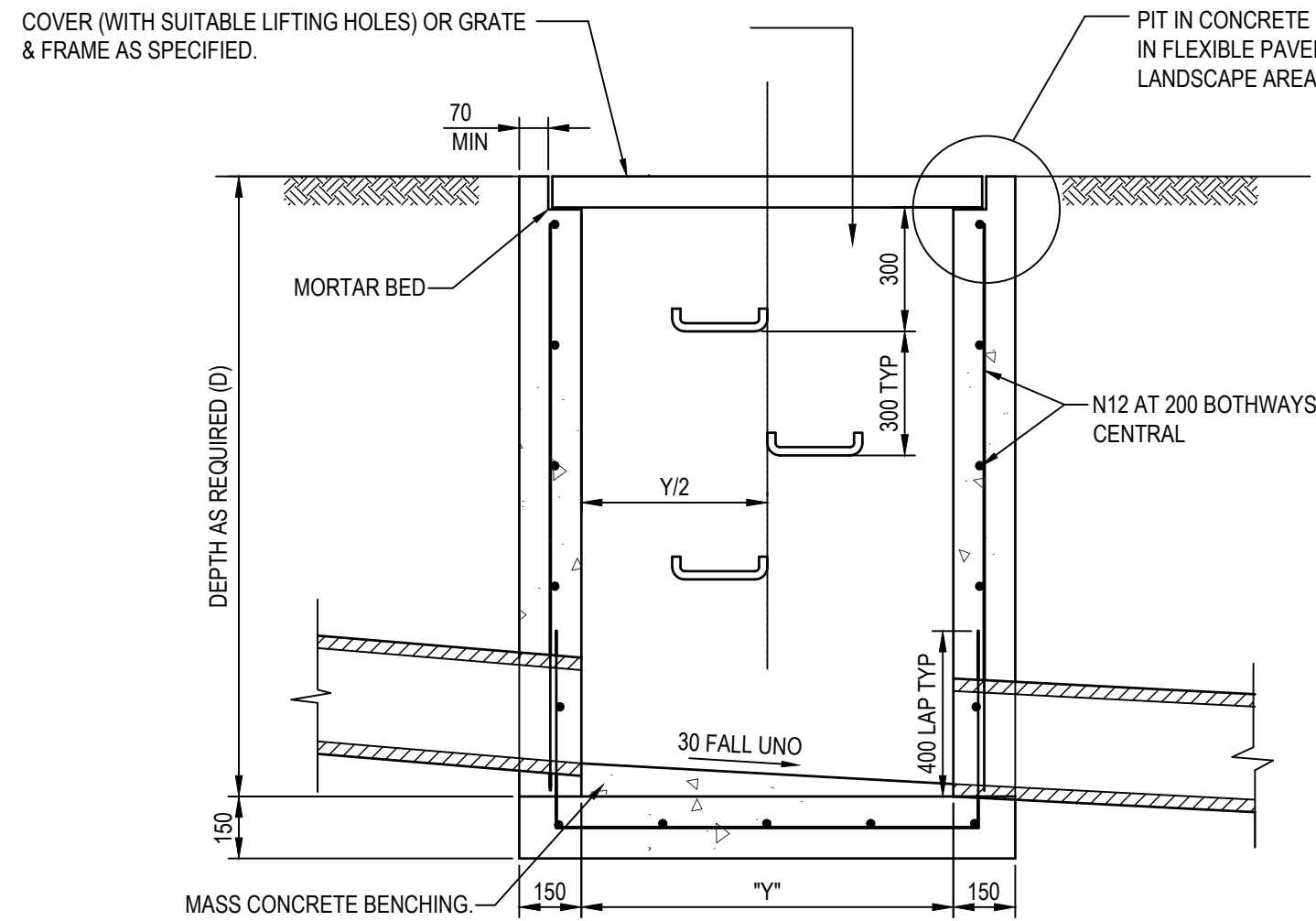
**PIT EDGE DETAIL "D"**

SCALE 1:10



**SURCHARGE PIT EDGE DETAIL**

SCALE 1:10

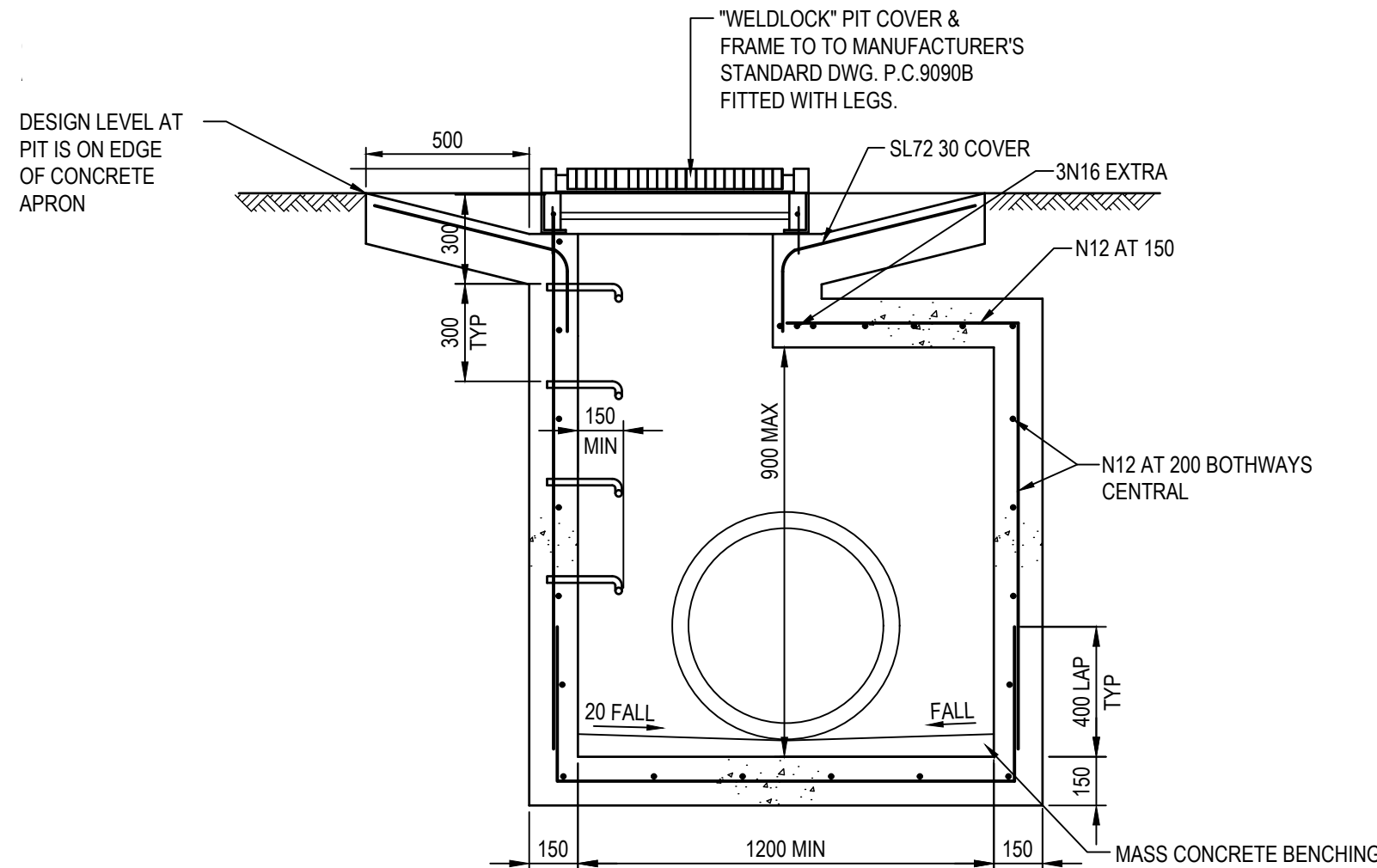


**SECTION 2**

SCALE 1:20

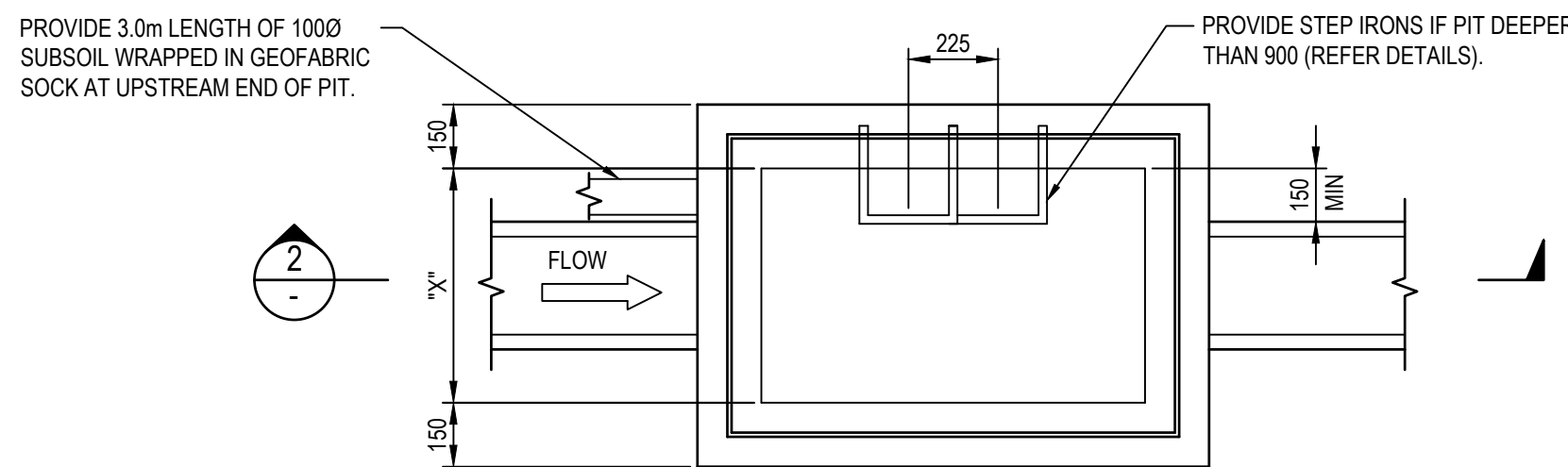
MINIMUM INTERNAL PIT DIMENSIONS			
"D"	"X"	"Y"	
D ≤ 600	450	450"	
D ≤ 900	600	600"	
D ≤ 1200	600	900	
D > 1200	900	900	

NOTE: PITS DENOTED \* SHALL BE USED ONLY WHERE SPECIFIED IN DRAINAGE SCHEDULE OR ON PLAN.



**SECTION 1**

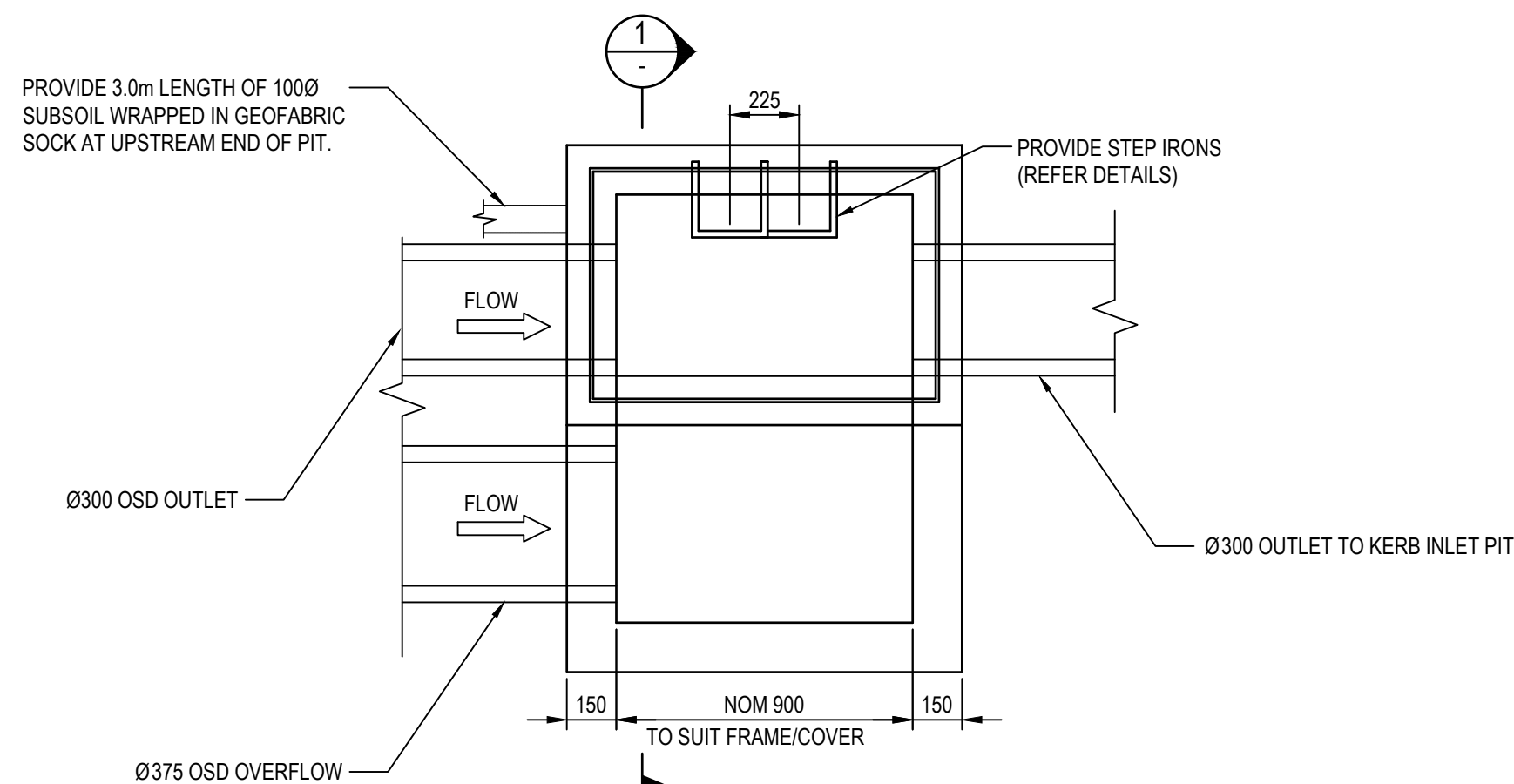
SCALE 1:20



**PLAN**

SCALE 1:20

**TYPICAL SURFACE INLET/JUNCTION PIT**



**PLAN**

SCALE 1:20

**SURCHARGE PIT - HAUNCHED CHAMBER**

SCALE 1:20

© COPYRIGHT of this design and plan is the property of ACOR Consultants Pty Ltd. ACN 079 306 246 ABN 40 079 306 246, all rights reserved. It must not be used, modified, reproduced or copied wholly or in part without written permission from ACOR Consultants Pty Ltd.

This drawing has been assigned an electronic code that signifies the drawing has been checked and approved by:

						North
A	ISSUE FOR TENDER	20.06.17	DW	MB		
Issue	Description	Date	Drawn	Approved		
1						

Client  
**DEE WHY RSL CLUB**

9321 PITWATER ROAD  
DEE WHY NSW 2099

Architect

**ALTIS**  
architecture

SUITE 123/26-32 PIRRAMA ROAD  
PYRMONT NSW 2009  
PHONE : 02 9364 9000

**AcOR**  
CONSULTANTS

ENGINEERS | MANAGERS | INFRASTRUCTURE PLANNERS | DEVELOPMENT CONSULTANTS

ACOR Consultants Pty Ltd

Level 1, 24 Falcon Street  
Crows Nest NSW 2065  
T +61 2 9438 5098



Project

**PROPOSED CLUB REFURBISHMENT**  
**DEE WHY RSL**

932 PITWATER ROAD  
DEE WHY NSW 2099

Drawing Title  
**ENABLING WORKS**  
**DETAIL SHEET 1**

Drawn DW	Date 13.04.16	Scale N.T.S	A1	Q.A. Check NP	Date 10.03.17
Designed MB	Project No. <b>SY160161</b>	Dwg. No. C1.07	Issue A		

**TENDER ISSUE**  
NOT FOR CONSTRUCTION

25/07/2016 10:03 AM C:\Users\p216\My Documents\SY160161 - C1.07.dwg



4. ALL STORMWATER DRAINAGE WORKS DENOTED AS ENABLING WORKS TO BE UNDERTAKEN BY ENABLING WORKS CONTRACTOR PRIOR TO MAIN WORKS.



This drawing has been assigned an electronic code that signifies the drawing has been checked and approved by

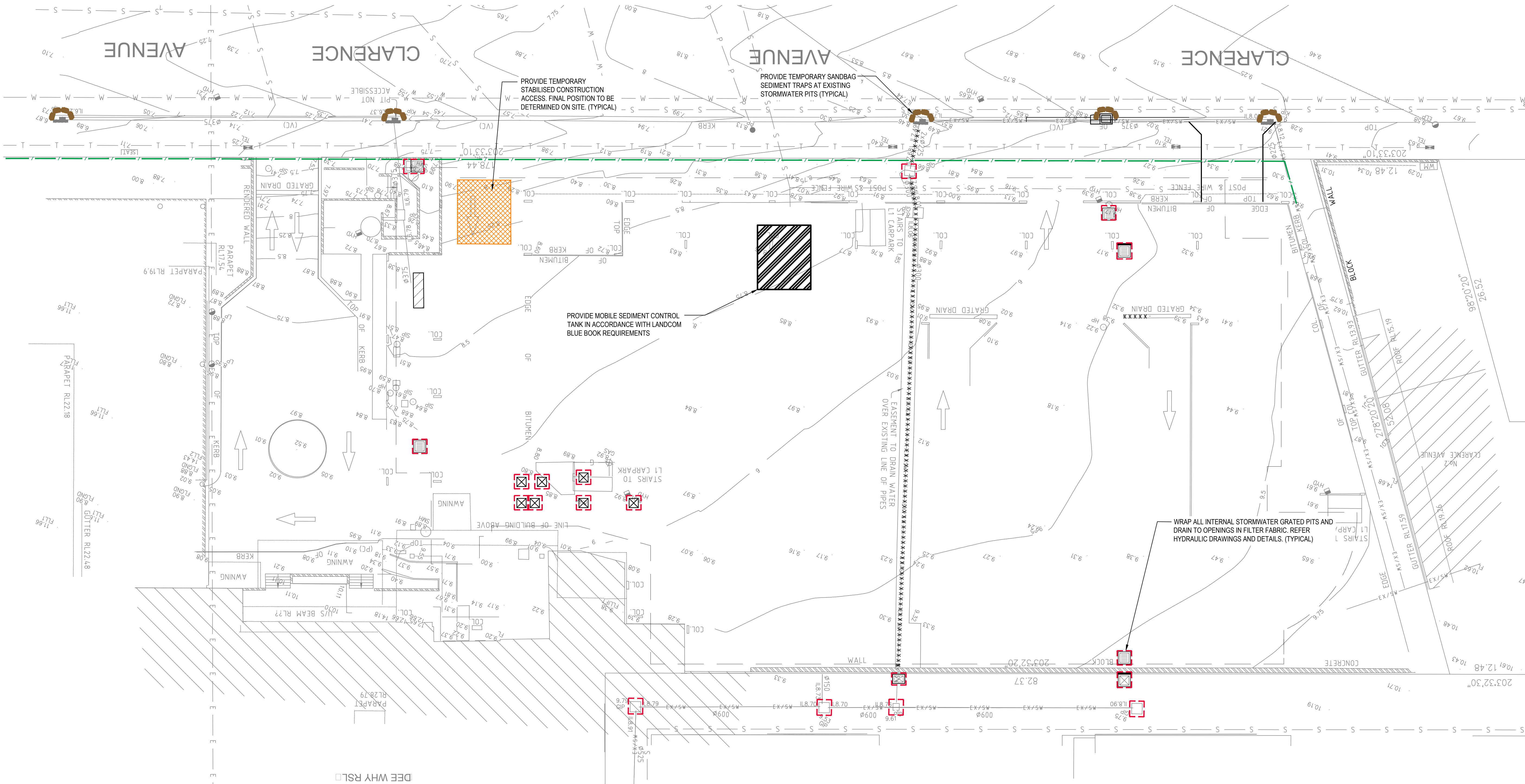
9321 PITTWATER ROAD  
DEE WHY NSW 2099



932 PITWATER ROAD  
DEE WHY NSW 2099

Drawn DW	Date 13.04.16	Scale 1:200	A1	Q.A. Check NP	Date 10.03.17
Designed MB	Project No. SY160161			Dwg. No. C2.01	Issue G

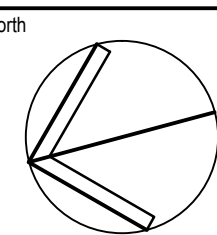




© COPYRIGHT of this design and plan is the property of ACOR Consultants Pty Ltd. ACN 079 306 246 ABN 40 079 306 246, all rights reserved. It must not be used, modified, reproduced or copied wholly or in part without written permission from ACOR Consultants Pty Ltd.

This drawing has been assigned an electronic code that signifies the drawing has been checked and approved by:

D	ISSUE FOR REQUEST FOR TENDER	18.07.17	GP	MB
C	ISSUE FOR COORDINATION	07.07.17	KR	MB
B	RE-ISSUE FOR DEVELOPMENT APPLICATION	20.03.17	DW	MB
A	ISSUE FOR DA	14.03.17	DW	MB
Issue	Description	Date	Drawn	Approved



Client  
**DEE WHY RSL CLUB**

9321 PITTWATER ROAD  
DEE WHY NSW 2009

Architect  
**ALTIS**  
architecture

SUITE 123/26-32 PIRRAMA ROAD  
PYRMONT NSW 2009  
PHONE : 02 9364 9000



ENGINEERS | MANAGERS | INFRASTRUCTURE PLANNERS | DEVELOPMENT CONSULTANTS

ACOR Consultants Pty Ltd  
Level 1, 24 Falcon Street  
Crows Nest NSW 2065  
T +61 2 9438 5098



Project  
**PROPOSED CLUB REFURBISHMENT  
DEE WHY RSL**

932 PITWATER ROAD  
DEE WHY NSW 2009

Drawing Title  
**SOIL EROSION AND SEDIMENT CONTROL PLAN**

Drawn DW	Date 13.04.16	Scale 1:500	A1	Q.A. Check NP	Date 10.03.17
Designed MB	Project No. <b>SY160161</b>	Dwg. No. C3.01	Issue D		

NOT FOR CONSTRUCTION



## EROSION AND SEDIMENT CONTROL NOTES

### GENERAL INSTRUCTIONS

- E1. THIS PLAN IS TO BE READ IN CONJUNCTION WITH THE ENGINEERING PLANS, AND ANY OTHER PLANS OR WRITTEN INSTRUCTIONS THAT MAY BE ISSUED AND RELATING TO DEVELOPMENT AT THE SUBJECT SITE.
- E2. THE SITE SUPERINTENDENT WILL ENSURE THAT ALL SOIL AND WATER MANAGEMENT WORKS ARE LOCATED AS INSTRUCTED IN THIS SPECIFICATION.
- E3. ALL BUILDERS AND SUB-CONTRACTORS WILL BE INFORMED OF THEIR RESPONSIBILITIES IN MINIMISING THE POTENTIAL FOR SOIL EROSION AND POLLUTION TO DOWNSLOPE LANDS AND WATERWAYS.

### CONSTRUCTION SEQUENCE

- E4. THE SOIL EROSION POTENTIAL ON THIS SITE SHALL BE MINIMISED. HENCE WORKS SHALL BE UNDERTAKEN IN THE FOLLOWING SEQUENCE :
- INSTALL SEDIMENT FENCES, TEMPORARY CONSTRUCTION EXIT AND SANDBAG KERB INLET SEDIMENT TRAP.
  - UNDERTAKE SITE DEVELOPMENT WORKS IN ACCORDANCE WITH THE ENGINEERING PLANS. PHASE DEVELOPMENT SO THAT LAND DISTURBANCE IS CONFINED TO AREAS OF WORKABLE SIZE.

### EROSION CONTROL

- E5. DURING WINDY CONDITIONS, LARGE, UNPROTECTED AREAS WILL BE KEPT MOIST (NOT WET) BY SPRINKLING WITH WATER TO KEEP DUST UNDER CONTROL.
- E6. FINAL SITE LANDSCAPING WILL BE UNDERTAKEN AS SOON AS POSSIBLE AND WITHIN 20 WORKING DAYS FROM COMPLETION OF CONSTRUCTION ACTIVITIES.

### FENCING

- E7. STOCKPILES WILL NOT BE LOCATED WITHIN 2 METRES OF HAZARD AREAS, INCLUDING LIKELY AREAS OF CONCENTRATED OR HIGH VELOCITY FLOWS SUCH AS WATERWAYS. WHERE THEY ARE BETWEEN 2 AND 5 METRES FROM SUCH AREAS, SPECIAL SEDIMENT CONTROL MEASURES SHOULD BE TAKEN TO MINIMISE POSSIBLE POLLUTION TO DOWNSLOPE WATERS, E.G. THROUGH INSTALLATION OF SEDIMENT FENCING.
- E8. ANY SAND USED IN THE CONCRETE CURING PROCESS (SPREAD OVER THE SURFACE) WILL BE REMOVED AS SOON AS POSSIBLE AND WITHIN 10 WORKING DAYS FROM PLACEMENT.
- E9. WATER WILL BE PREVENTED FROM ENTERING THE PERMANENT DRAINAGE SYSTEM UNLESS IT IS RELATIVELY SEDIMENT FREE, I.E. THE CATCHMENT AREA HAS BEEN PERMANENTLY LANDSCAPED AND/OR ANY LIKELY SEDIMENT HAS BEEN FILTERED THROUGH AN APPROVED STRUCTURE.
- E10. TEMPORARY SOIL AND WATER MANAGEMENT STRUCTURES WILL BE REMOVED ONLY AFTER THE LANDS THEY ARE PROTECTING ARE REHABILITATED.

### OTHER MATTERS

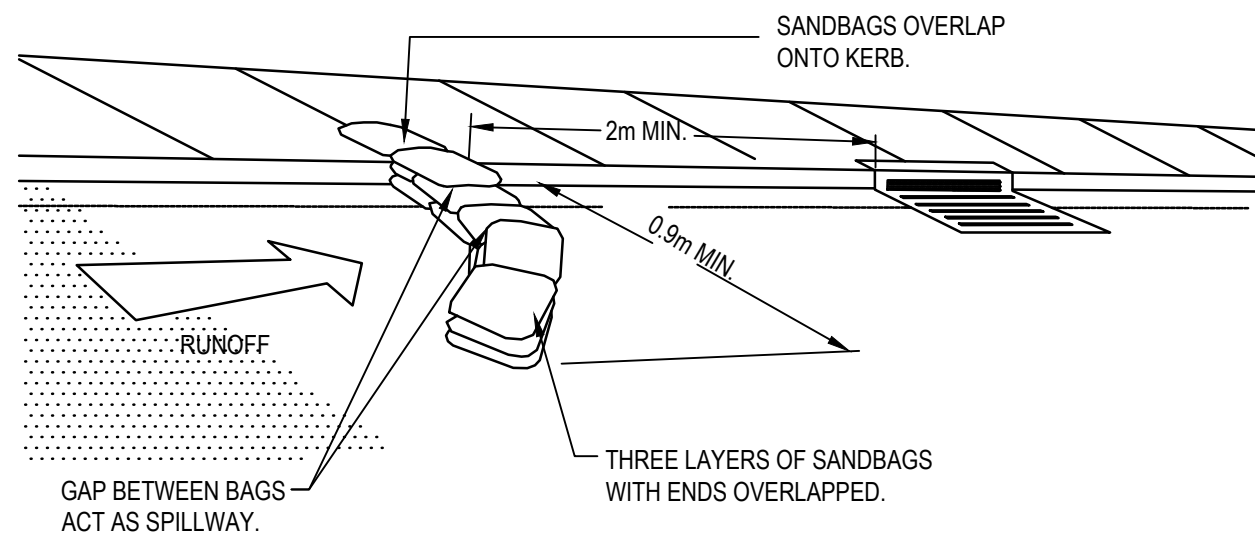
- E11. ACCEPTABLE RECEPTORS WILL BE PROVIDED FOR CONCRETE AND MORTAR SLURRIES, PAINTS, ACID WASHINGS, LIGHT-WEIGHT WASTE MATERIALS AND LITTER.
- E12. RECEPTORS FOR CONCRETE AND MORTAR SLURRIES, PAINTS, ACID WASHINGS, LIGHT-WEIGHT WASTE MATERIALS AND LITTER ARE TO BE EMPTIED AS NECESSARY. DISPOSAL OF WASTE SHALL BE IN A MANNER APPROVED BY THE SITE SUPERINTENDENT.

### SEDIMENTATION TANK

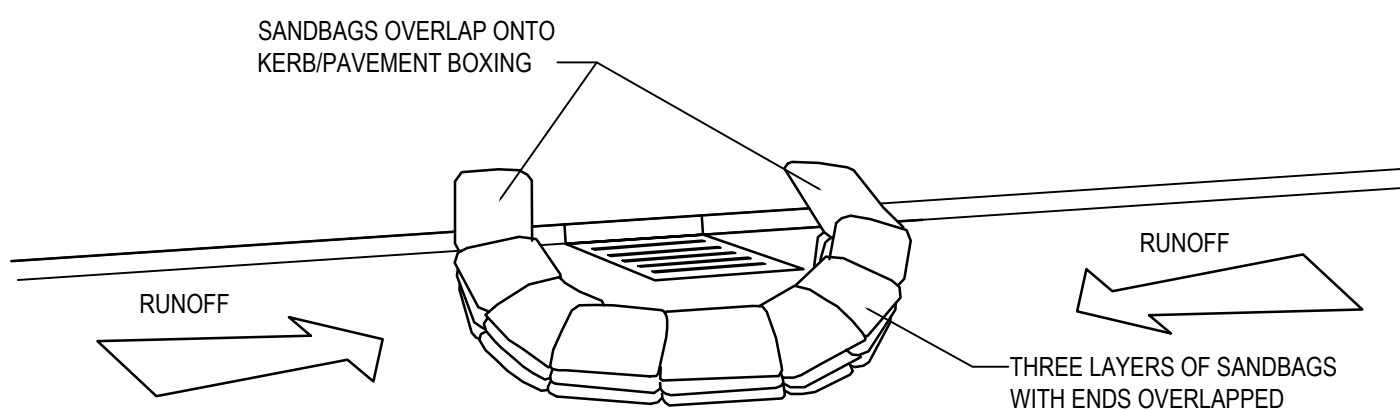
- E13. SEDIMENT TANK TO BE PROVIDED AND WATER TO BE TREATED IN LINE WITH BLUE BOOK RERQUIREMENTS

### SITE INSPECTION & MAINTENANCE

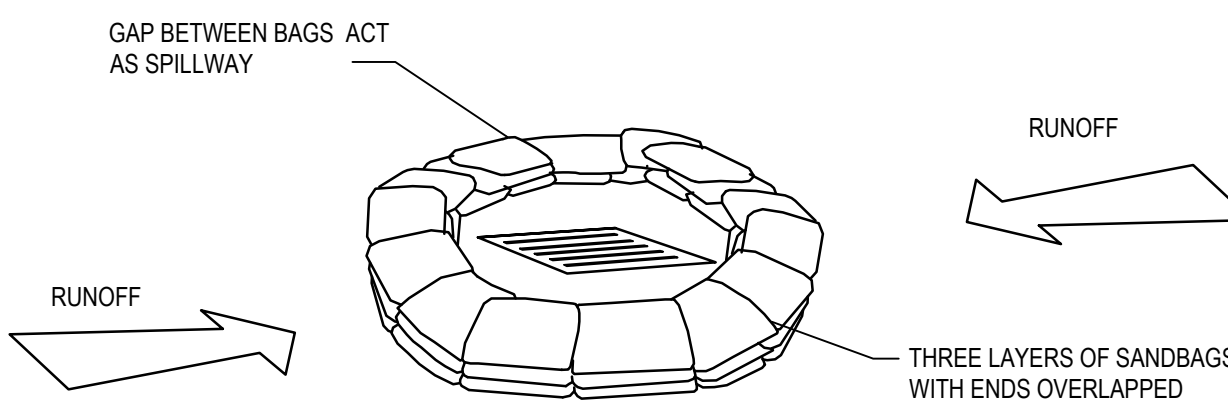
- E13. EROSION AND SEDIMENT CONTROL MEASURES SHALL BE INSPECTED AFTER RAINFALL EVENTS TO ENSURE THAT THEY OPERATE EFFECTIVELY. REPAIR AND OR MAINTENANCE SHALL BE UNDERTAKEN AS REQUIRED.



**SANDBAG KERB INLET SEDIMENT TRAP.**  
NTS

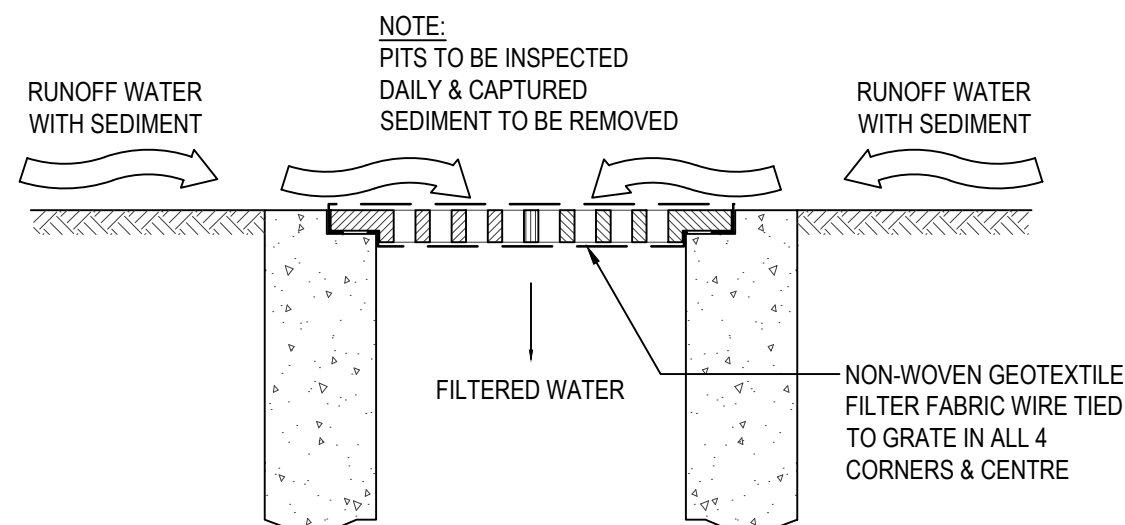


**SANDBAG SEDIMENT TRAP - AT KERB SAG PIT**



**SANDBAG SEDIMENT TRAP - AT OTHER THAN KERB SAG PIT**

**SANDBAG SEDIMENT TRAP DETAILS**  
NTS



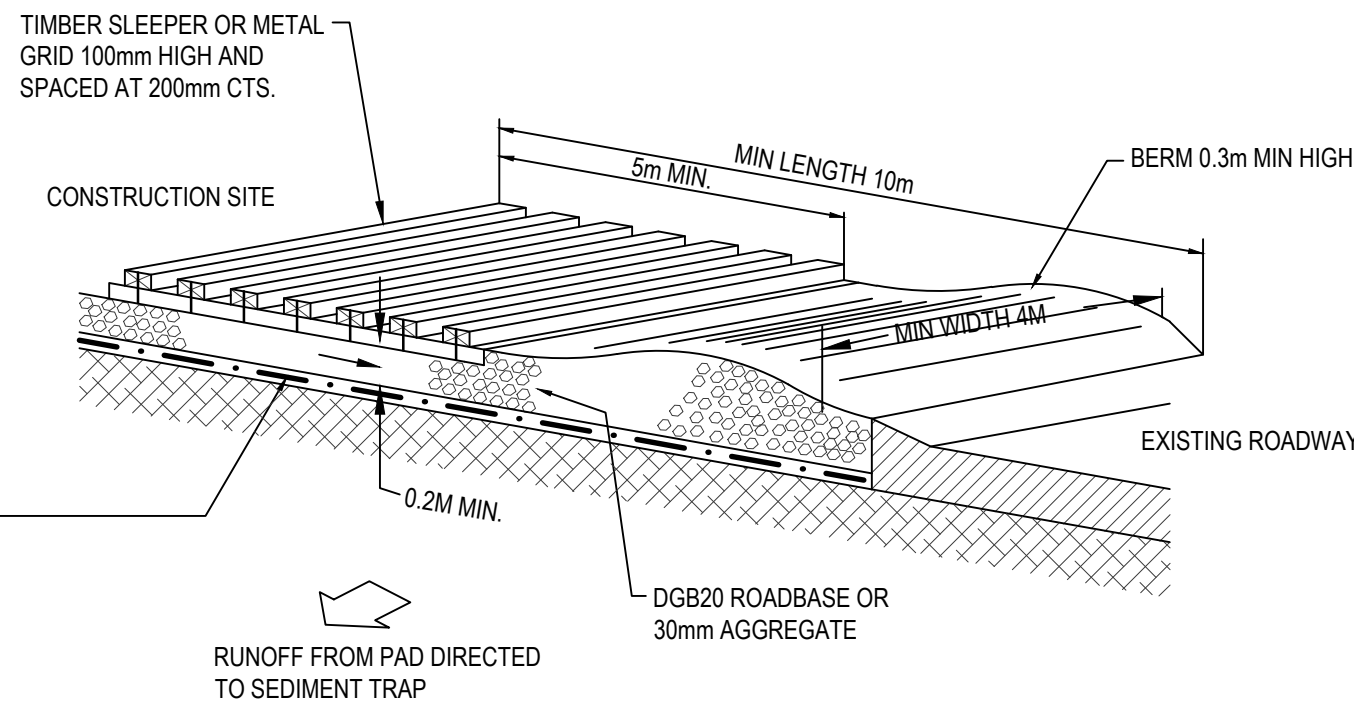
**INLET TRAP**

NTS.

NOTE:  
TO BE USED IN PAVED AREAS WHERE  
TRAFFIC ACCESS IS REQUIRED

NOTE:  
ENSURE THAT ALL COUNCIL AND PUBLIC UTILITY  
ASSETS ARE MAINTAINED AND PROTECTED AT ALL  
TIMES IN THE VICINITY OF THE TEMPORARY  
CONSTRUCTION EXIT

GEOTEXTILE FABRIC DESIGNED TO PREVENT  
INTERMIXING OF SUBGRADE AND BASE  
MATERIALS AND TO MAINTAIN GOOD  
PROPERTIES OF THE SUB-BASE LAYERS.  
GEOTEXTILE MAY BE WOVEN OR NEEDLE  
PUNCHED PRODUCT WITH A MINIMUM CBR  
BURST STRENGTH (AS3706.4-90) OF 2500N.



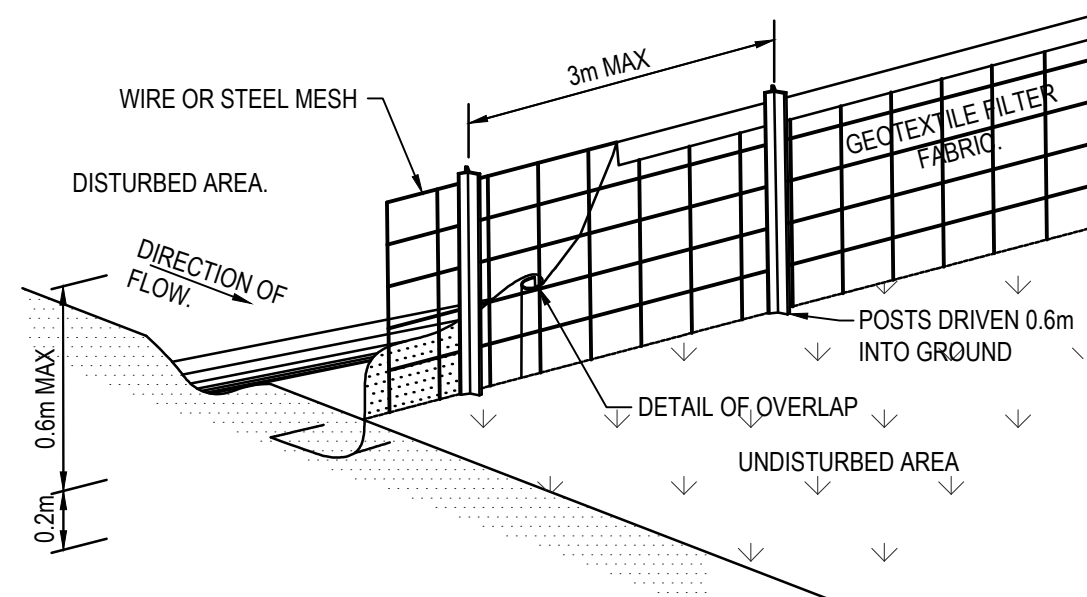
### CONSTRUCTION NOTES

- STRIP TOPSOIL AND LEVEL SITE.
- COMPACT SUBGRADE.
- COVER AREA WITH NEEDLE-PUNCHED GEOTEXTILE.
- CONSTRUCT 200MM THICK PAD OVER GEOTEXTILE USING ROADBASE OR 30MM AGGREGATE.
- CONSTRUCT HUMP IMMEDIATELY WITHIN BOUNDARY TO DIVERT WATER TO A SEDIMENT FENCE OR OTHER SEDIMENT TRAP WHERE THE SEDIMENT IS COLLECTED AND REMOVED.

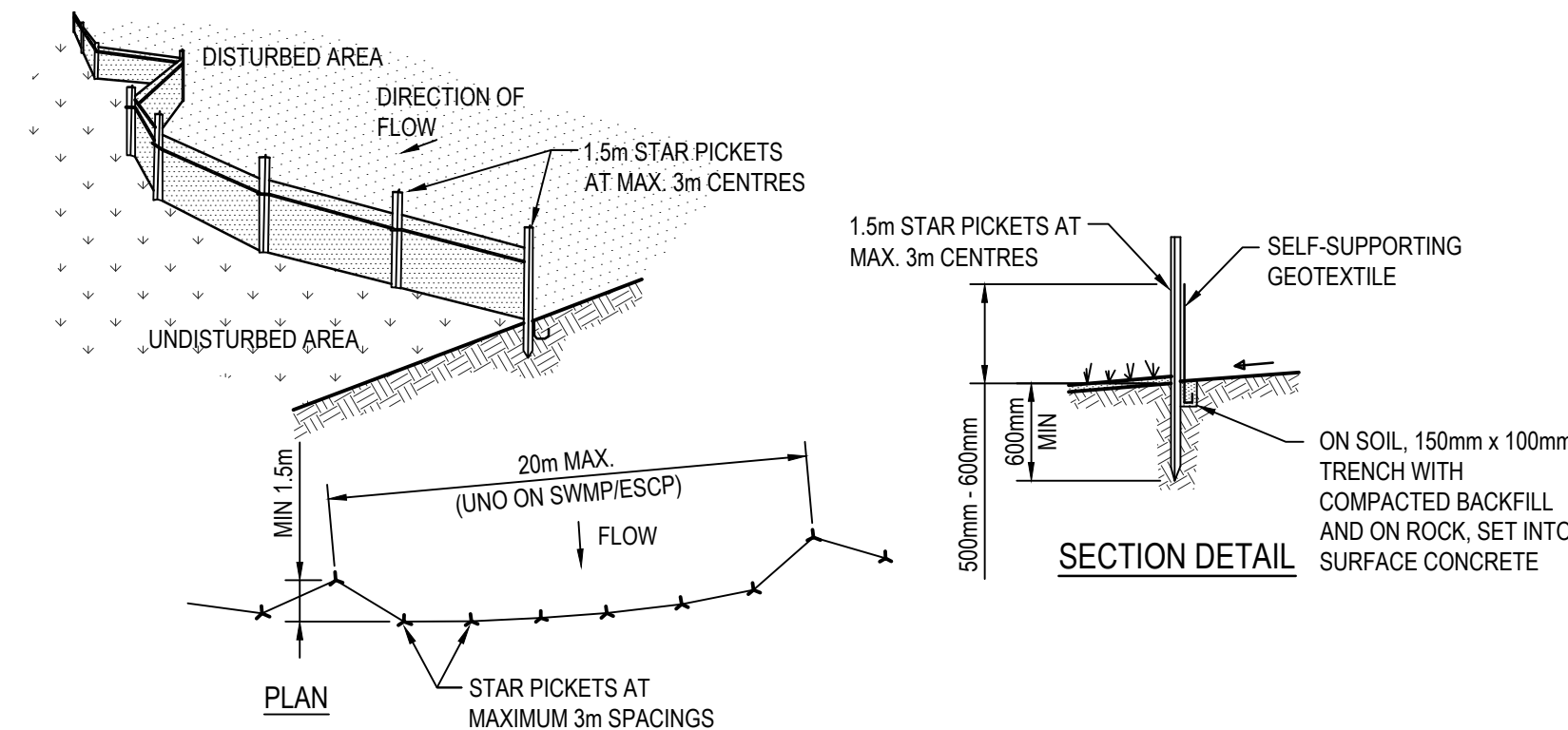
### MAINTENANCE NOTES

THE EXIT SHALL BE MAINTAINED IN A CONDITION WHICH PREVENTS TRACKING OR FLOWING OF SEDIMENT OFF THE CONSTRUCTION SITE. THIS MAY REQUIRE PERIODIC TOP DRESSING WITH ADDITIONAL GRAVEL AS CONDITIONS DEMAND AND REPAIR AND/OR CLEANOUT OF ANY MEASURES USED TO TRAP SEDIMENT. ALL SEDIMENT SPILLED, DROPPED, WASHED OR TRACKED OFF THE CONSTRUCTION SITE MUST BE REMOVED IMMEDIATELY.

**TEMPORARY STABILISED CONSTRUCTION EXIT**  
NTS



**SEDIMENT CONTROL FENCE**  
NTS



### CONSTRUCTION NOTES

- CONSTRUCT SEDIMENT FENCE AS CLOSE AS POSSIBLE TO PARALLEL TO THE CONTOURS OF THE SITE.
- DRIVE 1.5m LONG STAR PICKETS INTO GROUND, 3 METRES APART.
- DIG A 150mm DEEP TRENCH ALONG THE UPSLOPE LINE OF THE FENCE FOR THE BOTTOM OF THE FABRIC TO BE ENTRENCHED.
- BACKFILL TRENCH OVER BASE OF FABRIC.
- FIX SELF-SUPPORTING GEOTEXTILE TO UPSLOPE SIDE OF POSTS WITH WIRE TIES OR AS RECOMMENDED BY GEOTEXTILE MANUFACTURER.
- JOIN SECTIONS OF FABRIC AT A SUPPORT POST WITH A 150mm OVERLAP.

**SEDIMENT CONTROL FENCE**  
NTS

© COPYRIGHT of this design and plan is the property of ACOR Consultants Pty Ltd. ACN 079 306 246 ABN 40 079 306 246, all rights reserved. It must not be used, modified, reproduced or copied wholly or in part without written permission from ACOR Consultants Pty Ltd.

This drawing has been assigned an electronic code that signifies the drawing has been checked and approved by:

Issue	Description	Date	Drawn	Approved
D	ISSUE FOR REQUEST FOR TENDER	18.07.17	GP	MB
C	ISSUE FOR COORDINATION	07.07.17	KR	MB
B	RE-ISSUE FOR DEVELOPMENT APPLICATION	20.03.17	DW	MB
A	ISSUE FOR DA	14.03.17	DW	MB

Client  
**DEE WHY RSL CLUB**

9321 PITTWATER ROAD  
DEE WHY NSW 2099

Architect  
**ALTIS**  
architecture  
SUITE 123/26-32 PIRRAMA ROAD  
PYRMONT NSW 2099  
PHONE : 02 9364 9000

ACOR Consultants Pty Ltd  
Level 1, 24 Falcon Street  
Crows Nest NSW 2065  
T +61 2 9438 5098  
**ACOR**  
CONSULTANTS  
ENGINEERS | MANAGERS | INFRASTRUCTURE PLANNERS | DEVELOPMENT CONSULTANTS

Project  
**PROPOSED CLUB REFURBISHMENT  
DEE WHY RSL**

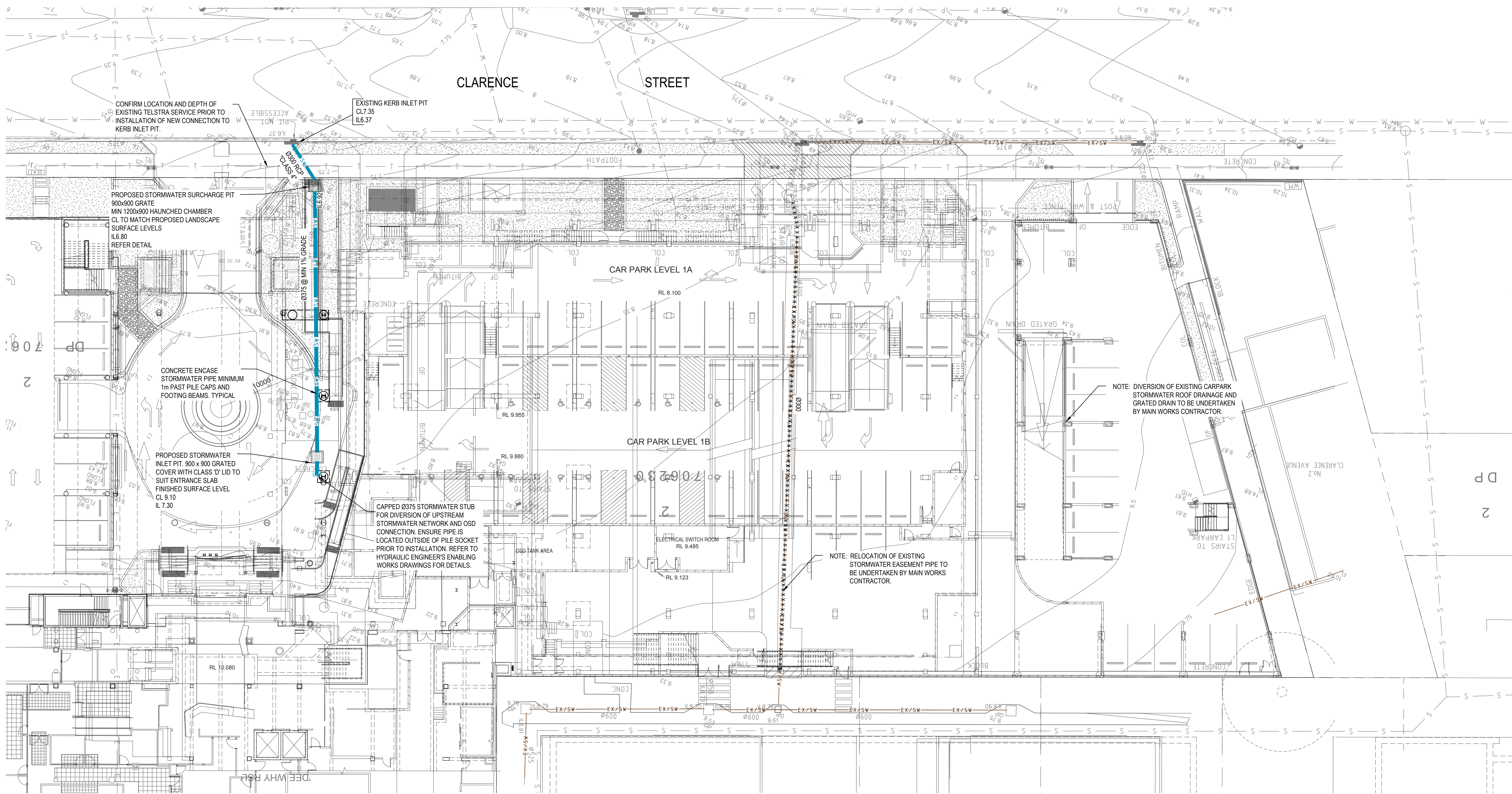
932 PITWATER ROAD  
DEE WHY NSW 2099

Drawing Title  
**SOIL EROSION AND SEDIMENT CONTROL  
NOTES AND DETAILS PLAN**

Drawn	Date	Scale	A1	Q.A. Check	Date
DW	13.04.16	N.T.S.		NP	10.03.17
Designed	Project No.	Dwg. No.	Issue		
MB	SY160161	C3.02	D		

NOT FOR CONSTRUCTION





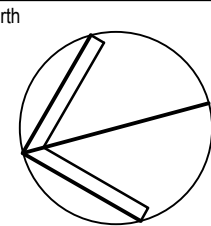
NOTES

- STORMWATER ENABLING WORKS PLAN TO BE READ IN CONJUNCTION WITH THE HYDRAULIC ENABLING WORKS PLANS.
- CONTRACTOR TO CONFIRM LOCATION OF ALL EXISTING SERVICES PRIOR TO INSTALLATION OF PROPOSAL SERVICES

© COPYRIGHT of this design and plan is the property of ACOR Consultants Pty Ltd. ACN 079 306 246 ABN 40 079 306 246, all rights reserved. It must not be used, modified, reproduced or copied wholly or in part without written permission from ACOR Consultants Pty Ltd.

This drawing has been assigned an electronic code that signifies the drawing has been checked and approved by:

F	ISSUE FOR SECTION 96	13.03.18	DK	MB
E	ISSUE FOR SECTION 96	20.11.17	JH	MB
D	REISSUE FOR TENDER	10.08.17	GP	MB
C	REISSUE FOR TENDER	18.07.17	GP	MB
Issue	Description	Date	Drawn	Approved



Client  
**DEE WHY RSL CLUB**

9321 PITWATER ROAD  
DEE WHY NSW 2009

Architect  
**ALTIS**  
architecture

SUITE 123/26-32 PIRRAMA ROAD  
PYRMONT NSW 2009  
PHONE : 02 9364 9000

**ACOR**  
CONSULTANTS

ENGINEERS | MANAGERS | INFRASTRUCTURE PLANNERS | DEVELOPMENT CONSULTANTS

**ACOR Consultants Pty Ltd**  
Level 1, 24 Falcon Street  
Crows Nest NSW 2065  
T +61 2 9438 5098



Project  
**PROPOSED CLUB REFURBISHMENT  
DEE WHY RSL**

932 PITWATER ROAD  
DEE WHY NSW 2009

Drawing Title  
**STORMWATER ENABLING WORKS PLAN**

Drawn DW	Date JUNE 2017	Scale 1:200	A1	Q.A. Check NP	Date 10.03.17
Designed MB	Project No. SY160161	Dwg. No. C4.01	Issue F		

**TENDER ISSUE**  
NOT FOR CONSTRUCTION

130318\_003\_Pitwater\_RSL\_Plan\_01\_160161\_Stormwater\_Enabling\_Works\_Plan\_C4.01.dwg  
Rev 13/03/18 1:55pm