

Client: Point Polaris			Site Name: Forestway Shopping Centre			Site Address: Corner of Waringah Road and Forest Way, Frenchs Forest NSW 2086						Client No.: P0132		Job No.: 58718-001		
Area / Level	Room & Location	Feature	Item Description	Hazard Type	Sample No.	Sample Status	Friability	Disturb. Potential	Condition	Risk Status	Approx. Quantity	Recommendations & Comments		Control Priority	Reinspect Date	Photo No.
Exterior - roof	West end	Roof covering	Bituminous membrane	Asbestos	Not sampled: would damage integrity	Suspected Negative	-	-	-	-	-	Suspected negative due to age and appearance.		-	-	1
Exterior - roof	North east	Around ductwork through wall	Fibre cement sheeting	Asbestos	58718-001-003	Positive	Non-friable	Low	Fair	Low	4m ²	Maintain in current condition if to remain in-situ. Remove under controlled non-friable asbestos removal conditions prior to refurbishment or demolition works by a Class B (non-friable) licensed asbestos removal contractor.		P4	Aug-23	2
Exterior - roof	Throughout	Ductwork	Mastic sealant	Asbestos	58718-001-002	Positive	Non-friable	Low	Good	Low	100m	Label as containing asbestos and maintain in current condition if to remain in-situ. Remove under controlled non-friable asbestos removal conditions prior to refurbishment or demolition works by a Class B (non-friable) licensed asbestos removal contractor.		P4	Aug-23	3
Exterior - roof	Throughout	Ductwork - reheat units	Millboard insulation	Asbestos	Not sampled: inaccessible	Suspected Positive	Friable	Low	Unknown	Medium	6 units	Confirm status, label as containing asbestos and maintain in current condition if to remain in-situ. Remove under controlled friable asbestos removal conditions prior to refurbishment or demolition works by a Class A (friable) licensed asbestos removal contractor.		P3	Aug-23	4
Exterior, roof hut 1	Adjacent doorway	Infill panel	Fibre cement sheeting	Asbestos	58718-001-004	Positive	Non-friable	Low	Good	Low	1m ²	Maintain in current condition if to remain in-situ. Remove under controlled non-friable asbestos removal conditions prior to refurbishment or demolition works by a Class B (non-friable) licensed asbestos removal contractor.		P4	Aug-23	5
Exterior, roof hut 1	North	Awning and eaves	Fibre cement sheeting	Asbestos	58718-001-005	Positive	Non-friable	Low	Fair	Low	10m ²	Maintain in current condition if to remain in-situ. Remove under controlled non-friable asbestos removal conditions prior to refurbishment or demolition works by a Class B (non-friable) licensed asbestos removal contractor.		P4	Aug-23	6
Exterior / Interior	Roof space above shopping mall	Window frames	Window caulking	Asbestos	58718-001-016	Negative - treat as positive	Non-friable	Low	Fair	Low	3000m	Note that Greencap's previous report indicated the presence of positive window mastic. Prensa's sampling produced negative results. A mixture of positive asbestos-containing and negative non-asbestos-containing caulking / mastic may be present. Prensa recommends all is treated as asbestos continuing until such time as a more comprehensive sampling strategy is commissioned.		P4	Aug-23	7
Exterior / Interior	Roof space above shopping mall	Window frames	Window caulking	Asbestos	58718-001-017	Negative - treat as positive	Non-friable	Low	Fair	Low	3000m	Note that Greencap's previous report indicated the presence of positive window mastic. Prensa's sampling produced negative results. A mixture of positive asbestos-containing and negative non-asbestos-containing caulking / mastic may be present. Prensa recommends all is treated as asbestos continuing until such time as a more comprehensive sampling strategy is commissioned.		P4	Aug-23	7
Exterior / Interior	Roof space above shopping mall	Window frames	Window caulking	Asbestos	58718-001-018	Negative - treat as positive	Non-friable	Low	Fair	Low	3000m	Note that Greencap's previous report indicated the presence of positive window mastic. Prensa's sampling produced negative results. A mixture of positive asbestos-containing and negative non-asbestos-containing caulking / mastic may be present. Prensa recommends all is treated as asbestos continuing until such time as a more comprehensive sampling strategy is commissioned.		P4	Aug-23	7
Exterior, roof	Adjacent huts	Original ductwork	Mastic sealant	Asbestos	Not sampled: inaccessible	Suspected Positive	Non-friable	Low	Good	Low	100m	Confirm status, label as containing asbestos and maintain in current condition if to remain in-situ. Remove under controlled non-friable asbestos removal conditions prior to refurbishment or demolition works by a Class B (non-friable) licensed asbestos removal contractor.		P4	Aug-23	8
Exterior, ground level	Adjacent Shop 12, above substation entry	Infill panel	Fibre cement sheeting	Asbestos	53175-001-016	Positive	Non-friable	Low	Good	Low	5m ²	Label as containing asbestos and maintain in current condition if to remain in-situ. Remove under controlled non-friable asbestos removal conditions prior to refurbishment or demolition works by a Class B (non-friable) licensed asbestos removal contractor.		P4	Aug-23	9
Exterior	Throughout walls	Expansion joints	Mastic sealant	Asbestos	Refer to: 58718-001-008	Suspected Positive	Non-friable	Low	Good	Low	100m	Maintain in current condition if to remain in-situ. Remove under controlled non-friable asbestos removal conditions prior to refurbishment or demolition works by a Class B (non-friable) licensed asbestos removal contractor.		P4	Aug-23	-
Exterior	Throughout floor	Expansion joints	Mastic sealant	Asbestos	58718-002-002	Negative	-	-	-	-	-	-		-	-	10
Exterior	Shop 33 loading dock	Awning	Fibre cement sheeting	Asbestos	58718-002-003	Positive	Non-friable	Low	Good	Low	30m ²	Label as containing asbestos and maintain in current condition if to remain in-situ. Remove under controlled non-friable asbestos removal conditions prior to refurbishment or demolition works by a Class B (non-friable) licensed asbestos removal contractor.		P4	Aug-23	11

Area / Level	Room & Location	Feature	Item Description	Hazard Type	Sample No.	Sample Status	Friability	Disturb. Potential	Condition	Risk Status	Approx. Quantity	Recommendations & Comments	Control Priority	Reinspect Date	Photo No.
Exterior	Shop 33 loading dock	Infill panel	Fibre cement sheeting	Asbestos	58718-002-004	Negative	-	-	-	-	-	-	-	-	12
Exterior	Car park	Beams	Textured coating	Asbestos	58718-002-005	Negative	-	-	-	-	-	-	-	-	13
Exterior	Maintenance room beneath ramp	Door panels	Fibre cement sheeting	Asbestos	58718-001-020	Negative	-	-	-	-	-	-	-	-	14
Exterior	Maintenance room beneath ramp	Panel adjacent door	Fibre cement sheeting	Asbestos	Refer to: 58718-002-020	Assumed Negative	-	-	-	-	-	-	-	-	-
Exterior	Car park scrubber machine room	Electrical backing board	Bituminous backing board	Asbestos	Not sampled: live electricity	Suspected Positive	Non-friable	Low	Good	Low	1m ²	Confirm status, label as containing asbestos and maintain in current condition if to remain in-situ. Remove under controlled non-friable asbestos removal conditions prior to refurbishment or demolition works by a Class B (non-friable) licensed asbestos removal contractor.	P4	Aug-23	15
Exterior	Liquorland, eastern elevation	Wall Cladding	Fibre cement sheeting	Asbestos	57818-003-002	Negative	-	-	-	-	-	-	-	-	49
Exterior	Car Wash, surrounding building, at height	Wall cladding	Fibre cement sheeting	Asbestos	Not sampled: height restrictions	Suspected Positive	Non-friable	Low	Good	Low	50m ²	Confirm status, label as containing asbestos and maintain in current condition if to remain in-situ. Remove under controlled non-friable asbestos removal conditions prior to refurbishment or demolition works by a Class B (non-friable) licensed asbestos removal contractor.	P4	Aug-23	50
Exterior	Car Wash, retaining wall	Wall Cladding	Fibre cement sheeting	Asbestos	57818-003-001	Negative	-	-	-	-	-	-	-	-	51
Roof hut 1	Adjacent doorway	Infill panel	Fibre cement sheeting	Asbestos	58718-001-013	Positive	Non-friable	Low	Good	Low	<1m ²	Maintain in current condition if to remain in-situ. Remove under controlled non-friable asbestos removal conditions prior to refurbishment or demolition works by a Class B (non-friable) licensed asbestos removal contractor.	P4	Aug-23	-
Roof hut 1	Throughout	Original ductwork	Mastic sealant	Asbestos	Not sampled: inaccessible	Suspected Positive	Non-friable	Low	Good	Low	10m	Confirm status, label as containing asbestos and maintain in current condition if to remain in-situ. Remove under controlled non-friable asbestos removal conditions prior to refurbishment or demolition works by a Class B (non-friable) licensed asbestos removal contractor.	P4	Aug-23	16
Roof hut 1	Throughout	Electrical backing board	Bituminous backing board	Asbestos	Not sampled: electrical hazard	Suspected Positive	Non-friable	Low	Good	Low	5 units	Confirm status, label as containing asbestos and maintain in current condition if to remain in-situ. Remove under controlled non-friable asbestos removal conditions prior to refurbishment or demolition works by a Class B (non-friable) licensed asbestos removal contractor.	P4	Aug-23	17
Roof hut 2	Throughout	Original ductwork	Mastic sealant	Asbestos	Not sampled: inaccessible	Suspected Positive	Non-friable	Low	Good	Low	10m	Confirm status, label as containing asbestos and maintain in current condition if to remain in-situ. Remove under controlled non-friable asbestos removal conditions prior to refurbishment or demolition works by a Class B (non-friable) licensed asbestos removal contractor.	P4	Aug-23	-
Roof hut 2	Throughout	Electrical backing board	Bituminous backing board	Asbestos	Not sampled: electrical hazard	Suspected Positive	Non-friable	Low	Good	Low	4 units	Confirm status, label as containing asbestos and maintain in current condition if to remain in-situ. Remove under controlled non-friable asbestos removal conditions prior to refurbishment or demolition works by a Class B (non-friable) licensed asbestos removal contractor.	P4	Aug-23	-
Roof hut 2	Adjacent doorway	Redundant	Fibre cement sheeting	Asbestos	58718-001-001	Negative	-	-	-	-	-	-	-	-	18
Roof hut 3	Throughout	Original ductwork	Mastic sealant	Asbestos	Not sampled: inaccessible	Suspected Positive	Non-friable	Low	Good	Low	10m	Confirm status, label as containing asbestos and maintain in current condition if to remain in-situ. Remove under controlled non-friable asbestos removal conditions prior to refurbishment or demolition works by a Class B (non-friable) licensed asbestos removal contractor.	P4	Aug-23	-

Area / Level	Room & Location	Feature	Item Description	Hazard Type	Sample No.	Sample Status	Friability	Disturb. Potential	Condition	Risk Status	Approx. Quantity	Recommendations & Comments	Control Priority	Reinspect Date	Photo No.
Roof hut 3	Throughout	Electrical backing board	Bituminous backing board	Asbestos	Not sampled: electrical hazard	Suspected Positive	Non-friable	Low	Good	Low	4 units	Confirm status, label as containing asbestos and maintain in current condition if to remain in-situ. Remove under controlled non-friable asbestos removal conditions prior to refurbishment or demolition works by a Class B (non-friable) licensed asbestos removal contractor.	P4	Aug-23	-
Roof hut 4	Throughout	Original ductwork	Mastic sealant	Asbestos	Not sampled: inaccessible	Suspected Positive	Non-friable	Low	Good	Low	10m	Confirm status, label as containing asbestos and maintain in current condition if to remain in-situ. Remove under controlled non-friable asbestos removal conditions prior to refurbishment or demolition works by a Class B (non-friable) licensed asbestos removal contractor.	P4	Aug-23	-
Roof hut 4	Throughout	Electrical backing board	Bituminous backing board	Asbestos	Not sampled: electrical hazard	Suspected Positive	Non-friable	Low	Good	Low	6 units	Confirm status, label as containing asbestos and maintain in current condition if to remain in-situ. Remove under controlled non-friable asbestos removal conditions prior to refurbishment or demolition works by a Class B (non-friable) licensed asbestos removal contractor.	P4	Aug-23	-
Roof hut 5	Throughout	Original ductwork	Mastic sealant	Asbestos	Not sampled: inaccessible	Suspected Positive	Non-friable	Low	Good	Low	10m	Confirm status, label as containing asbestos and maintain in current condition if to remain in-situ. Remove under controlled non-friable asbestos removal conditions prior to refurbishment or demolition works by a Class B (non-friable) licensed asbestos removal contractor.	P4	Aug-23	-
Roof hut 5	Throughout	Electrical backing board	Bituminous backing board	Asbestos	Not sampled: electrical hazard	Suspected Positive	Non-friable	Low	Good	Low	4 units	Confirm status, label as containing asbestos and maintain in current condition if to remain in-situ. Remove under controlled non-friable asbestos removal conditions prior to refurbishment or demolition works by a Class B (non-friable) licensed asbestos removal contractor.	P4	Aug-23	-
Roof hut 5	Throughout	Original ductwork	Mastic sealant	Asbestos	Not sampled: inaccessible	Suspected Positive	Non-friable	Low	Good	Low	10m	Confirm status, label as containing asbestos and maintain in current condition if to remain in-situ. Remove under controlled non-friable asbestos removal conditions prior to refurbishment or demolition works by a Class B (non-friable) licensed asbestos removal contractor.	P4	Aug-23	-
Roof hut 5	Throughout	Electrical backing board	Bituminous backing board	Asbestos	Not sampled: electrical hazard	Suspected Positive	Non-friable	Low	Good	Low	4 units	Confirm status, label as containing asbestos and maintain in current condition if to remain in-situ. Remove under controlled non-friable asbestos removal conditions prior to refurbishment or demolition works by a Class B (non-friable) licensed asbestos removal contractor.	P4	Aug-23	-
Roof level	Roof space above shopping mall	Beneath windows - infill panels	Fibre cement sheeting	Asbestos	53175-001-010	Positive	Non-friable	Medium	Fair	Medium	150m ²	Encapsulate exposed sections, label as containing asbestos and maintain in a good condition if to remain in-situ. Remove under controlled non-friable asbestos removal conditions prior to refurbishment or demolition works by a Class B (non-friable) licensed asbestos removal contractor.	P3	Aug-20	19
Roof level	Roof space above shopping mall	South east - infill panels	Fibre cement sheeting	Asbestos	Refer to: 53175-001-010	Suspected Positive	Non-friable	Low	Fair	Low	20m ²	Encapsulate exposed sections, label as containing asbestos and maintain in a good condition if to remain in-situ. Remove under controlled non-friable asbestos removal conditions prior to refurbishment or demolition works by a Class B (non-friable) licensed asbestos removal contractor.	P3	Aug-23	-
Roof level	Roof space above shopping mall	West - infill panels	Fibre cement sheeting	Asbestos	53175-001-011	Positive	Non-friable	Low	Fair	Low	20m ²	Encapsulate exposed sections, label as containing asbestos and maintain in a good condition if to remain in-situ. Remove under controlled non-friable asbestos removal conditions prior to refurbishment or demolition works by a Class B (non-friable) licensed asbestos removal contractor.	P3	Aug-23	-
Roof level	Roof space above shopping mall	Beneath walkway	Fibre cement sheeting	Asbestos	Refer to: 53175-001-011	Suspected Positive	Non-friable	Medium	Poor	Medium	1m ²	Remove under controlled non-friable asbestos removal conditions prior to refurbishment or demolition works by a Class B (non-friable) licensed asbestos removal contractor.	P3	Aug-20	-
Level 1	Plant room 1, south east	Fire door - single	Insulation	Asbestos	Not sampled: would damage integrity	Suspected Positive	Friable	Low	Good	Low	1 unit	Confirm status, label as containing asbestos and maintain in current condition if to remain in-situ. Remove under controlled friable asbestos removal conditions prior to refurbishment or demolition works by a Class A (friable) licensed asbestos removal contractor.	P3	Aug-23	20
Level 1	Plant room 1, south west	Electrical backing board	Bituminous backing board	Asbestos	Not sampled: electrical hazard	Suspected Positive	Non-friable	Low	Good	Low	1 unit	Confirm status, label as containing asbestos and maintain in current condition if to remain in-situ. Remove under controlled non-friable asbestos removal conditions prior to refurbishment or demolition works by a Class B (non-friable) licensed asbestos removal contractor.	P3	Aug-23	21
Level 1	Plant room 1	To red vessel	Gasket material	Asbestos	58718-001-006	Negative	-	-	-	-	-	-	-	-	22
Level 1	Plant room 1	Ductwork	Mastic sealant	Asbestos	58718-001-007	Positive	Non-friable	Low	Good	Low	40m	Label as containing asbestos and maintain in current condition if to remain in-situ. Remove under controlled non-friable asbestos removal conditions prior to refurbishment or demolition works by a Class B (non-friable) licensed asbestos removal contractor.	P4	Aug-23	23

Area / Level	Room & Location	Feature	Item Description	Hazard Type	Sample No.	Sample Status	Friability	Disturb. Potential	Condition	Risk Status	Approx. Quantity	Recommendations & Comments	Control Priority	Reinspect Date	Photo No.
Level 1	Plant room 2	Within electrical a/c switchboard	Debris	Asbestos	58718-001-014	Positive	Non-friable	Low	Poor	Medium	< 1m ²	Remove under controlled non-friable asbestos removal conditions prior to refurbishment or demolition works by a Class B (non-friable) licensed asbestos removal contractor.	P3	Aug-19	24
Level 1	Plant room 2	Electrical backing board	Bituminous backing board	Asbestos	Not sampled: electrical hazard	Suspected Positive	Non-friable	Low	Good	Low	1 unit	Confirm status, label as containing asbestos and maintain in current condition if to remain in-situ. Remove under controlled non-friable asbestos removal conditions prior to refurbishment or demolition works by a Class B (non-friable) licensed asbestos removal contractor.	P3	Aug-23	25
Level 1	Plant room 2, north east	On ground	Fibre cement sheeting	Asbestos	58718-001-015	Positive	Non-friable	Low	Poor	Medium	< 1m ²	Remove under controlled non-friable asbestos removal conditions prior to refurbishment or demolition works by a Class B (non-friable) licensed asbestos removal contractor.	P4	Aug-20	26
Level 1	Plant room 2	Throughout ductwork	Mastic sealant	Asbestos	Not sampled: inaccessible	Suspected Positive	Non-friable	Low	Good	Low	50m	Confirm status, label as containing asbestos and maintain in current condition if to remain in-situ. Remove under controlled non-friable asbestos removal conditions prior to refurbishment or demolition works by a Class B (non-friable) licensed asbestos removal contractor.	P4	Aug-23	-
Level 1	Plant room 2	Throughout ceiling	Fibre cement sheeting	Asbestos	Not sampled: height restriction	Suspected Positive	Non-friable	Low	Good	Low	150m	Confirm status, label as containing asbestos and maintain in current condition if to remain in-situ. Remove under controlled non-friable asbestos removal conditions prior to refurbishment or demolition works by a Class B (non-friable) licensed asbestos removal contractor.	P4	Aug-23	-
Level 1	Plant room 3 (Woolworths)	Walls	Mastic sealant	Asbestos	58718-001-008	Positive	Non-friable	Low	Fair	Low	10m	Encapsulate exposed sections, label as containing asbestos and maintain in a good condition if to remain in-situ. Remove under controlled non-friable asbestos removal conditions prior to refurbishment or demolition works by a Class B (non-friable) licensed asbestos removal contractor.	P4	Aug-23	27
Level 1	Shop 1 (Woolworths), back of house	Floor	Vinyl floor tiles	Asbestos	58718-001-009A	Negative	-	-	-	-	-	-	-	-	28
Level 1	Shop 1 (Woolworths), back of house	Floor	Adhesive	Asbestos	58718-001-009B	Negative	-	-	-	-	-	-	-	-	-
Level 1	Shop 1 (Woolworths), back of house	Floor	Screed	Asbestos	58718-001-009C	Negative	-	-	-	-	-	-	-	-	-
Level 1	Corridor, throughout	Floor	Vinyl floor tiles	Asbestos	58718-002-001	Positive	Non-friable	Low	Fair	Low	50m ²	Label as containing asbestos and maintain in current condition if to remain in-situ. Remove under controlled non-friable asbestos removal conditions prior to refurbishment or demolition works by a Class B (non-friable) licensed asbestos removal contractor.	P4	Aug-23	29
Level 1	Commercial suites, throughout	Window frames	Window caulking	Asbestos	58718-001-019	Negative - treat as positive	Non-friable	Low	Fair	Low	3000m	Note that Greencap's previous report indicated the presence of positive window mastic. Prensa's sampling produced negative results. A mixture of positive asbestos-containing and negative non-asbestos-containing caulking / mastic may be present. Prensa recommends all is treated as asbestos continuing until such time as a more comprehensive sampling strategy is commissioned.	P4	Aug-23	-
Level 1	Male w.c. - cleaners cupboard	Wall - dividing	Fibre cement sheeting	Asbestos	53175-001-012	Positive	Non-friable	Low	Fair	Low	2m ²	Label as containing asbestos and maintain in current condition if to remain in-situ. Remove under controlled non-friable asbestos removal conditions prior to refurbishment or demolition works by a Class B (non-friable) licensed asbestos removal contractor.	P4	Aug-23	31
Ground level	Main switch room	Penetrations	Moulded fibre cement	Asbestos	Not sampled: inaccessible	Suspected Positive	Non-friable	Low	Unknown	Low	Unknown	No access during Prensa 2018 assessment, assume still present. Label as containing asbestos and maintain in current condition if to remain in-situ. Remove under controlled non-friable asbestos removal conditions prior to refurbishment or demolition works by a Class B (non-friable) licensed asbestos removal contractor.	P4	Aug-23	-
Ground level	Corridor to Suite 11	Electrical backing board	Bituminous backing board	Asbestos	Not sampled: electrical hazard	Suspected Positive	Non-friable	Low	Good	Low	1m ²	Confirm status, label as containing asbestos and maintain in current condition if to remain in-situ. Remove under controlled non-friable asbestos removal conditions prior to refurbishment or demolition works by a Class B (non-friable) licensed asbestos removal contractor.	P4	Aug-23	-
Ground level	Shop 1 (Woolworths), staff toilets	Ceiling	Plasterboard (previously reported as fibre cement sheeting)	Asbestos	-	-	-	-	-	-	-	Suspected negative due to age and appearance.	-	-	-

Area / Level	Room & Location	Feature	Item Description	Hazard Type	Sample No.	Sample Status	Friability	Disturb. Potential	Condition	Risk Status	Approx. Quantity	Recommendations & Comments	Control Priority	Reinspect Date	Photo No.
Ground level	Shop 1 (Woolworths), sales floor	Floor	Vinyl floor tiles - white	Asbestos	Refer to: 58718-001-009	Negative	-	-	-	-	-	-	-	-	-
Ground level	Shop 1 (Woolworths), sales floor	Floor	Vinyl floor tiles - green	Asbestos	58718-001-011A	Negative	-	-	-	-	-	-	-	-	32
Ground level	Shop 1 (Woolworths), sales floor	Floor	Adhesive	Asbestos	58718-001-011B	Negative	-	-	-	-	-	-	-	-	-
Ground level	Shop 1 (Woolworths), sales floor	Floor	Vinyl floor tiles - brown / grey	Asbestos	58718-001-010A	Negative	-	-	-	-	-	-	-	-	33
Ground level	Shop 1 (Woolworths), sales floor	Floor	Adhesive	Asbestos	58718-001-010B	Negative	-	-	-	-	-	-	-	-	-
Ground level	Shop 1 (Woolworths), sales floor	Floor	Vinyl floor tiles - brown / grey	Asbestos	Unable to sample: would cause unacceptable damage	Suspected Negative	-	-	-	-	-	-	-	-	-
Ground level	Shop 1 (Woolworths), cash office	Safe	Internal insulation	Asbestos	Not sampled: sealed unit	Suspected Positive	Friable	Low	Good	Low	1 units	Confirm status, label as containing asbestos and maintain in current condition if to remain in-situ. Remove under controlled friable asbestos removal conditions prior to refurbishment or demolition works by a Class A (friable) licensed asbestos removal contractor.	P4	Aug-23	34
Ground level	Emergency exits throughout	Door	Fire door core	Asbestos	Not sampled: alarmed	Suspected Positive	Friable	Low	Good	Low	10 units	Confirm status, label as containing asbestos and maintain in current condition if to remain in-situ. Remove under controlled friable asbestos removal conditions prior to refurbishment or demolition works by a Class A (friable) licensed asbestos removal contractor.	P4	Aug-23	-
Ground level	Baby change	Floor	Vinyl floor tiles	Asbestos	58718-001-012A	Negative	-	-	-	-	-	-	-	-	35
Ground level	Baby change	Floor	Adhesive	Asbestos	58718-001-012B	Negative	-	-	-	-	-	-	-	-	-
Ground level	Shop 13 McDonalds, corridor	Electrical backing board	Bituminous backing board	Asbestos	Not sampled: electrical hazard	Suspected Positive	Non-friable	Low	Good	Low	2 units	Confirm status, label as containing asbestos and maintain in current condition if to remain in-situ. Remove under controlled non-friable asbestos removal conditions prior to refurbishment or demolition works by a Class B (non-friable) licensed asbestos removal contractor.	P4	Aug-23	-
Ground level	Shop 13 McDonalds, office	Safe	Insulation	Asbestos	Not sampled: sealed unit	Suspected Positive	Friable	Low	Good	Low	1 unit	Confirm status, label as containing asbestos and maintain in current condition if to remain in-situ. Remove under controlled friable asbestos removal conditions prior to refurbishment or demolition works by a Class A (friable) licensed asbestos removal contractor.	P4	Aug-23	-
Ground level	Shop 21A, alcove	Electrical backing board	Bituminous backing board	Asbestos	Not sampled: electrical hazard	Suspected Positive	Non-friable	Low	Good	Low	1 unit	Confirm status, label as containing asbestos and maintain in current condition if to remain in-situ. Remove under controlled non-friable asbestos removal conditions prior to refurbishment or demolition works by a Class B (non-friable) licensed asbestos removal contractor.	P4	Aug-23	-
Roof level	Roof space above shopping mall	Roof	Insulation batts	SMF	-	Suspected Positive	Bonded	Low	Good	Low	300m ²	Maintain in current condition if to remain in-situ. Remove under controlled SMF conditions as per the Code of Practice for the Safe Use of Synthetic Mineral Fibres [NOHSC: 2006 (1990)].	-	-	36
Roof level	Roof space above shopping mall	Duct	Insulation batts	SMF	-	Suspected Positive	Bonded	Low	Good	Low	300m	Maintain in current condition if to remain in-situ. Remove under controlled SMF conditions as per the Code of Practice for the Safe Use of Synthetic Mineral Fibres [NOHSC: 2006 (1990)].	-	-	-

Area / Level	Room & Location	Feature	Item Description	Hazard Type	Sample No.	Sample Status	Friability	Disturb. Potential	Condition	Risk Status	Approx. Quantity	Recommendations & Comments	Control Priority	Reinspect Date	Photo No.
Roof	Throughout	Duct	Insulation material - external	SMF	-	Suspected Positive	Bonded	Low	Good	Low	100m ²	Maintain in current condition if to remain in-situ. Remove under controlled SMF conditions as per the Code of Practice for the Safe Use of Synthetic Mineral Fibres [NOHSC: 2006 (1990)].	-	-	-
Roof	Throughout	Pipe	Insulation material - external	SMF	-	Suspected Positive	Bonded	Low	Good	Low	50m	Maintain in current condition if to remain in-situ. Remove under controlled SMF conditions as per the Code of Practice for the Safe Use of Synthetic Mineral Fibres [NOHSC: 2006 (1990)].	-	-	37
Roof huts	Throughout	Duct	Insulation material - external	SMF	-	Suspected Positive	Bonded	Low	Good	Low	100m ²	Maintain in current condition if to remain in-situ. Remove under controlled SMF conditions as per the Code of Practice for the Safe Use of Synthetic Mineral Fibres [NOHSC: 2006 (1990)].	-	-	38
Roof huts	Throughout	Pipe	Insulation material - external	SMF	-	Suspected Positive	Bonded	Low	Good	Low	10m	Maintain in current condition if to remain in-situ. Remove under controlled SMF conditions as per the Code of Practice for the Safe Use of Synthetic Mineral Fibres [NOHSC: 2006 (1990)].	-	-	-
Exterior	Maintenance room beneath ramp	Adjacent door	Compressed ceiling tiles	SMF	-	Suspected Positive	Bonded	Low	Good	Low	6 units	Maintain in current condition if to remain in-situ. Remove under controlled SMF conditions as per the Code of Practice for the Safe Use of Synthetic Mineral Fibres [NOHSC: 2006 (1990)].	-	-	39
Level 1	Plant room 1	Duct	Insulation material - external	SMF	-	Suspected Positive	Bonded	Low	Good	Low	50m ²	Maintain in current condition if to remain in-situ. Remove under controlled SMF conditions as per the Code of Practice for the Safe Use of Synthetic Mineral Fibres [NOHSC: 2006 (1990)].	-	-	-
Level 1	Plant room 1	Pipe	Insulation material - external	SMF	-	Suspected Positive	Bonded	Low	Good	Low	10m	Maintain in current condition if to remain in-situ. Remove under controlled SMF conditions as per the Code of Practice for the Safe Use of Synthetic Mineral Fibres [NOHSC: 2006 (1990)].	-	-	-
Level 1	Plant room 1	Redundant	Compressed ceiling tiles	SMF	-	Suspected Positive	Bonded	Low	Good	Low	10 units	Maintain in current condition if to remain in-situ. Remove under controlled SMF conditions as per the Code of Practice for the Safe Use of Synthetic Mineral Fibres [NOHSC: 2006 (1990)].	-	-	-
Level 1	Store off plant room 1	Ceiling	Insulation batts	SMF	-	Suspected Positive	Bonded	Low	Fair	Low	30m ²	Maintain in current condition if to remain in-situ. Remove under controlled SMF conditions as per the Code of Practice for the Safe Use of Synthetic Mineral Fibres [NOHSC: 2006 (1990)].	-	-	-
Level 1	Store off plant room 1	Redundant	Compressed ceiling tiles	SMF	-	Suspected Positive	Bonded	Low	Good	Low	10 units	Maintain in current condition if to remain in-situ. Remove under controlled SMF conditions as per the Code of Practice for the Safe Use of Synthetic Mineral Fibres [NOHSC: 2006 (1990)].	-	-	-
Level 1	Plant room 2	Duct	Insulation material - external	SMF	-	Suspected Positive	Bonded	Low	Good	Low	50m ²	Maintain in current condition if to remain in-situ. Remove under controlled SMF conditions as per the Code of Practice for the Safe Use of Synthetic Mineral Fibres [NOHSC: 2006 (1990)].	-	-	-
Level 1	Plant room 3 (Woolworths)	Hot water heater	Insulation material - internal	SMF	-	Suspected Positive	Bonded	Low	Good	Low	1 unit	Maintain in current condition if to remain in-situ. Remove under controlled SMF conditions as per the Code of Practice for the Safe Use of Synthetic Mineral Fibres [NOHSC: 2006 (1990)].	-	-	40
Level 1	Plant room 3 (Woolworths)	Duct	Insulation material - external	SMF	-	Suspected Positive	Bonded	Low	Good	Low	50m ²	Maintain in current condition if to remain in-situ. Remove under controlled SMF conditions as per the Code of Practice for the Safe Use of Synthetic Mineral Fibres [NOHSC: 2006 (1990)].	-	-	-
Level 1	Shop 1 (Woolworths), stockroom	Duct	Insulation material - external	SMF	-	Suspected Positive	Bonded	Low	Good	Low	30m ²	Maintain in current condition if to remain in-situ. Remove under controlled SMF conditions as per the Code of Practice for the Safe Use of Synthetic Mineral Fibres [NOHSC: 2006 (1990)].	-	-	-
Level 1	Male w.c. - cleaners cupboard	Hot water heater	Insulation material - internal	SMF	-	Suspected Positive	Bonded	Low	Good	Low	1 unit	Maintain in current condition if to remain in-situ. Remove under controlled SMF conditions as per the Code of Practice for the Safe Use of Synthetic Mineral Fibres [NOHSC: 2006 (1990)].	-	-	-

Area / Level	Room & Location	Feature	Item Description	Hazard Type	Sample No.	Sample Status	Friability	Disturb. Potential	Condition	Risk Status	Approx. Quantity	Recommendations & Comments	Control Priority	Reinspect Date	Photo No.
Level 1	Throughout, underside of roof	Roof	Sarking insulation	SMF	-	Suspected Positive	Bonded	Low	Good	Low	300m ²	Maintain in current condition if to remain in-situ. Remove under controlled SMF conditions as per the Code of Practice for the Safe Use of Synthetic Mineral Fibres [NOHSC: 2006 (1990)].	-	-	41
Level 1	Throughout, ceiling space	Flexible ductwork	Insulation material - internal	SMF	-	Suspected Positive	Bonded	Low	Good	Low	100m	Maintain in current condition if to remain in-situ. Remove under controlled SMF conditions as per the Code of Practice for the Safe Use of Synthetic Mineral Fibres [NOHSC: 2006 (1990)].	-	-	-
Level 1	Centre Management, beneath sink	Hot water heater	Insulation material - internal	SMF	-	Suspected Positive	Bonded	Low	Good	Low	1 unit	Maintain in current condition if to remain in-situ. Remove under controlled SMF conditions as per the Code of Practice for the Safe Use of Synthetic Mineral Fibres [NOHSC: 2006 (1990)].	-	-	-
Level 1	Male bathroom, cleaners cupboard	Hot water heater	Insulation material - internal	SMF	-	Suspected Positive	Bonded	Low	Good	Low	1 unit	Maintain in current condition if to remain in-situ. Remove under controlled SMF conditions as per the Code of Practice for the Safe Use of Synthetic Mineral Fibres [NOHSC: 2006 (1990)].	-	-	-
Level 1	Suite 1 F45	Duct	Insulation material	SMF	-	Suspected Positive	Bonded	Low	Good	Low	15m ²	Maintain in current condition if to remain in-situ. Remove under controlled SMF conditions as per the Code of Practice for the Safe Use of Synthetic Mineral Fibres [NOHSC: 2006 (1990)].	-	-	-
Ground level	Cleaners store adjacent Shop 1	Hot water heater	Insulation material - internal	SMF	-	Suspected Positive	Bonded	Low	Good	Low	1 unit	Maintain in current condition if to remain in-situ. Remove under controlled SMF conditions as per the Code of Practice for the Safe Use of Synthetic Mineral Fibres [NOHSC: 2006 (1990)].	-	-	-
Ground level	Corridor to Suite 11	Penetrations	Pillow insulation	SMF	-	Suspected Positive	Bonded	Low	Good	Low	14 units	Maintain in current condition if to remain in-situ. Remove under controlled SMF conditions as per the Code of Practice for the Safe Use of Synthetic Mineral Fibres [NOHSC: 2006 (1990)].	-	-	42
Ground level	Suite 11 (Australia Post)	Ceiling	Compressed ceiling tiles	SMF	-	Suspected Positive	Bonded	Low	Good	Low	100m ²	Maintain in current condition if to remain in-situ. Remove under controlled SMF conditions as per the Code of Practice for the Safe Use of Synthetic Mineral Fibres [NOHSC: 2006 (1990)].	-	-	-
Ground level	Suite 11 (Australia Post), kitchenette, beneath sink	Hot water heater	Insulation material - internal	SMF	-	Suspected Positive	Bonded	Low	Good	Low	1 unit	Maintain in current condition if to remain in-situ. Remove under controlled SMF conditions as per the Code of Practice for the Safe Use of Synthetic Mineral Fibres [NOHSC: 2006 (1990)].	-	-	-
Ground level	Shop T25 Sushi Bar	Hot water heater	Insulation material - internal	SMF	-	Suspected Positive	Bonded	Low	Good	Low	1 unit	Maintain in current condition if to remain in-situ. Remove under controlled SMF conditions as per the Code of Practice for the Safe Use of Synthetic Mineral Fibres [NOHSC: 2006 (1990)].	-	-	-
Ground level	Shop 2, kitchenette, beneath sink	Hot water heater	Insulation material - internal	SMF	-	Suspected Positive	Bonded	Low	Good	Low	1 unit	Maintain in current condition if to remain in-situ. Remove under controlled SMF conditions as per the Code of Practice for the Safe Use of Synthetic Mineral Fibres [NOHSC: 2006 (1990)].	-	-	-
Ground level	Shop 3, at height	Duct	Insulation material - external	SMF	-	Suspected Positive	Bonded	Low	Good	Low	15m ²	Maintain in current condition if to remain in-situ. Remove under controlled SMF conditions as per the Code of Practice for the Safe Use of Synthetic Mineral Fibres [NOHSC: 2006 (1990)].	-	-	-
Ground level	Shop 3, ceiling, insulating panels	Ceiling	Insulation batts	SMF	-	Suspected Positive	Bonded	Low	Good	Low	25m ²	Maintain in current condition if to remain in-situ. Remove under controlled SMF conditions as per the Code of Practice for the Safe Use of Synthetic Mineral Fibres [NOHSC: 2006 (1990)].	-	-	-
Ground level	Shop 4/5 ANZ Bank, back of house	Ceiling	Compressed ceiling tiles	SMF	-	Suspected Positive	Bonded	Low	Good	Low	20m ²	Maintain in current condition if to remain in-situ. Remove under controlled SMF conditions as per the Code of Practice for the Safe Use of Synthetic Mineral Fibres [NOHSC: 2006 (1990)].	-	-	-
Ground level	Shop 4/5 ANZ Bank, back of house, beneath sink	Hot water heater	Insulation material - internal	SMF	-	Suspected Positive	Bonded	Low	Good	Low	1 unit	Maintain in current condition if to remain in-situ. Remove under controlled SMF conditions as per the Code of Practice for the Safe Use of Synthetic Mineral Fibres [NOHSC: 2006 (1990)].	-	-	-

Area / Level	Room & Location	Feature	Item Description	Hazard Type	Sample No.	Sample Status	Friability	Disturb. Potential	Condition	Risk Status	Approx. Quantity	Recommendations & Comments	Control Priority	Reinspect Date	Photo No.
Ground level	Shop 6/7 NAB Bank, back of house	Ceiling	Compressed ceiling tiles	SMF	-	Suspected Positive	Bonded	Low	Good	Low	50m ²	Maintain in current condition if to remain in-situ. Remove under controlled SMF conditions as per the Code of Practice for the Safe Use of Synthetic Mineral Fibres [NOHSC: 2006 (1990)].	-	-	-
Ground level	Shop 6/7 NAB Bank, back of house, beneath sink	Hot water heater	Insulation material - internal	SMF	-	Suspected Positive	Bonded	Low	Good	Low	1 unit	Maintain in current condition if to remain in-situ. Remove under controlled SMF conditions as per the Code of Practice for the Safe Use of Synthetic Mineral Fibres [NOHSC: 2006 (1990)].	-	-	-
Ground level	Shop 8/9 St George Bank, back of house	Ceiling	Compressed ceiling tiles	SMF	-	Suspected Positive	Bonded	Low	Good	Low	30m ²	Maintain in current condition if to remain in-situ. Remove under controlled SMF conditions as per the Code of Practice for the Safe Use of Synthetic Mineral Fibres [NOHSC: 2006 (1990)].	-	-	-
Ground level	Shop 8/9 St George Bank, back of house, beneath sink	Hot water heater	Insulation material - internal	SMF	-	Suspected Positive	Bonded	Low	Good	Low	1 unit	Maintain in current condition if to remain in-situ. Remove under controlled SMF conditions as per the Code of Practice for the Safe Use of Synthetic Mineral Fibres [NOHSC: 2006 (1990)].	-	-	-
Ground level	Shop 11A Commonwealth Bank, back of house	Ceiling	Compressed ceiling tiles	SMF	-	Suspected Positive	Bonded	Low	Good	Low	30m ²	Maintain in current condition if to remain in-situ. Remove under controlled SMF conditions as per the Code of Practice for the Safe Use of Synthetic Mineral Fibres [NOHSC: 2006 (1990)].	-	-	-
Ground level	Shop 11B Vacant	Duct	Insulation material - external	SMF	-	Suspected Positive	Bonded	Low	Good	Low	50m ²	Maintain in current condition if to remain in-situ. Remove under controlled SMF conditions as per the Code of Practice for the Safe Use of Synthetic Mineral Fibres [NOHSC: 2006 (1990)].	-	-	-
Ground level	Shop 11B Vacant	Flexible ductwork	Insulation material - internal	SMF	-	Suspected Positive	Bonded	Low	Good	Low	15m2	Maintain in current condition if to remain in-situ. Remove under controlled SMF conditions as per the Code of Practice for the Safe Use of Synthetic Mineral Fibres [NOHSC: 2006 (1990)].	-	-	-
Ground level	Shop 2 Vacant (soon to be Charrill Charlies)	Roof	Sarking insulation	SMF	-	Suspected Positive	Bonded	Low	Good	Low	30m2	Maintain in current condition if to remain in-situ. Remove under controlled SMF conditions as per the Code of Practice for the Safe Use of Synthetic Mineral Fibres [NOHSC: 2006 (1990)].	-	-	-
Ground level	Shop 13A/8 Angels Forest Massage, kitchenette	Hot water heater	Insulation material - internal	SMF	-	Suspected Positive	Bonded	Low	Good	Low	1 unit	Maintain in current condition if to remain in-situ. Remove under controlled SMF conditions as per the Code of Practice for the Safe Use of Synthetic Mineral Fibres [NOHSC: 2006 (1990)].	-	-	-
Ground level	Shop 18 Flight Centre	Hot water heater	Insulation material - internal	SMF	-	Suspected Positive	Bonded	Low	Good	Low	1 unit	Maintain in current condition if to remain in-situ. Remove under controlled SMF conditions as per the Code of Practice for the Safe Use of Synthetic Mineral Fibres [NOHSC: 2006 (1990)].	-	-	-
Ground level	Shop 16-20 Westpac Bank, back of house	Ceiling	Compressed ceiling tiles	SMF	-	Suspected Positive	Bonded	Low	Good	Low	30m ²	Maintain in current condition if to remain in-situ. Remove under controlled SMF conditions as per the Code of Practice for the Safe Use of Synthetic Mineral Fibres [NOHSC: 2006 (1990)].	-	-	-
Ground level	Shop 16/20 Westpac Bank, back of house, beneath sink	Hot water heater	Insulation material - internal	SMF	-	Suspected Positive	Bonded	Low	Good	Low	1 unit	Maintain in current condition if to remain in-situ. Remove under controlled SMF conditions as per the Code of Practice for the Safe Use of Synthetic Mineral Fibres [NOHSC: 2006 (1990)].	-	-	-
Ground level	Shop 31A Vacant	Ceiling	Insulation batts	SMF	-	Suspected Positive	Bonded	Low	Good	Low	4m ²	Maintain in current condition if to remain in-situ. Remove under controlled SMF conditions as per the Code of Practice for the Safe Use of Synthetic Mineral Fibres [NOHSC: 2006 (1990)].	-	-	-
Ground level	Shop 31A Vacant	Roof	Sarking insulation	SMF	-	Suspected Positive	Bonded	Low	Good	Low	100m ²	Maintain in current condition if to remain in-situ. Remove under controlled SMF conditions as per the Code of Practice for the Safe Use of Synthetic Mineral Fibres [NOHSC: 2006 (1990)].	-	-	-
Ground level	Shop 31A Vacant	Flexible ductwork	Insulation material - internal	SMF	-	Suspected Positive	Bonded	Low	Good	Low	20m	Maintain in current condition if to remain in-situ. Remove under controlled SMF conditions as per the Code of Practice for the Safe Use of Synthetic Mineral Fibres [NOHSC: 2006 (1990)].	-	-	-

Area / Level	Room & Location	Feature	Item Description	Hazard Type	Sample No.	Sample Status	Friability	Disturb. Potential	Condition	Risk Status	Approx. Quantity	Recommendations & Comments	Control Priority	Reinspect Date	Photo No.
Ground level	Shop 31A Vacant	Duct	Insulation material - external	SMF	-	Suspected Positive	Bonded	Low	Good	Low	20m ²	Maintain in current condition if to remain in-situ. Remove under controlled SMF conditions as per the Code of Practice for the Safe Use of Synthetic Mineral Fibres [NOHSC: 2006 (1990)].	-	-	-
Ground level	Shop 33 ALDI stockroom	Ceiling	Compressed ceiling tiles	SMF	-	Suspected Positive	Bonded	Low	Good	Low	100m ²	Maintain in current condition if to remain in-situ. Remove under controlled SMF conditions as per the Code of Practice for the Safe Use of Synthetic Mineral Fibres [NOHSC: 2006 (1990)].	-	-	-
Ground level	Shop 47 Cappiccino King	Hot water heater	Insulation material - internal	SMF	-	Suspected Positive	Bonded	Low	Good	Low	1 unit	Maintain in current condition if to remain in-situ. Remove under controlled SMF conditions as per the Code of Practice for the Safe Use of Synthetic Mineral Fibres [NOHSC: 2006 (1990)].	-	-	-
Ground level	Liquorland	Ceiling space	Insulation batts	SMF	-	Suspected Positive	Bonded	Low	Good	Low	50m ²	Maintain in current condition if to remain in-situ. Remove under controlled SMF conditions as per the Code of Practice for the Safe Use of Synthetic Mineral Fibres [NOHSC: 2006 (1990)].	-	-	-
Ground level	Liquorland	Flexible ductwork	Insulation	SMF	-	Suspected Positive	Bonded	Low	Good	Low	40 m	Maintain in current condition if to remain in-situ. Remove under controlled SMF conditions as per the Code of Practice for the Safe Use of Synthetic Mineral Fibres [NOHSC: 2006 (1990)].	-	-	-
Ground level	Liquorland, kitchenette	Hot water heater	Insulation material - internal	SMF	-	Suspected Positive	Bonded	Low	Good	Low	1 unit	Maintain in current condition if to remain in-situ. Remove under controlled SMF conditions as per the Code of Practice for the Safe Use of Synthetic Mineral Fibres [NOHSC: 2006 (1990)].	-	-	-
Ground level	Car wash, throughout	Ceiling	Compressed ceiling tiles	SMF	-	Suspected Positive	Bonded	Low	Good	Low	80m ²	Maintain in current condition if to remain in-situ. Remove under controlled SMF conditions as per the Code of Practice for the Safe Use of Synthetic Mineral Fibres [NOHSC: 2006 (1990)].	-	-	-
Basement	Shop 33 ALDI, kitchenette	Hot water heater	Insulation material - internal	SMF	-	Suspected Positive	Bonded	Low	Good	Low	1 unit	Maintain in current condition if to remain in-situ. Remove under controlled SMF conditions as per the Code of Practice for the Safe Use of Synthetic Mineral Fibres [NOHSC: 2006 (1990)].	-	-	-
Basement	Shop 33 ALDI, toilets	Ceiling	Compressed ceiling tiles	SMF	-	Suspected Positive	Bonded	Low	Good	Low	10m ²	Maintain in current condition if to remain in-situ. Remove under controlled SMF conditions as per the Code of Practice for the Safe Use of Synthetic Mineral Fibres [NOHSC: 2006 (1990)].	-	-	-
Basement	Shop 33 ALDI, conference room	Ceiling	Compressed ceiling tiles	SMF	-	Suspected Positive	Bonded	Low	Good	Low	30m ²	Maintain in current condition if to remain in-situ. Remove under controlled SMF conditions as per the Code of Practice for the Safe Use of Synthetic Mineral Fibres [NOHSC: 2006 (1990)].	-	-	-
Roof huts	Throughout	Fluorescent light fitting - single tube	Capacitor	PCBs	-	Suspected Negative	-	-	-	-	-	Suspected negative due to age and appearance.	-	-	43
Exterior	Adjacent roof huts	Duct	Grey - upper coloured paint system	Lead Paint - Chip	58718-LCP-001-002	Above Threshold	-	Low	Fair	Low	10m ²	0.50% lead content, remove flaking sections and over paint with a lead-free paint. Remove under controlled conditions in accordance withAS/NZS 4361.2:2017 Guide to hazardous paint management prior to renovation or demolition works.	-	-	-
Roof level	West roof section	Duct	Green - upper, blue lower coloured paint system	Lead Paint - Chip	58718-LCP-001-003	Above Threshold	-	Low	Fair	Low	10m ²	0.47% lead content, remove flaking sections and over paint with a lead-free paint. Remove under controlled conditions in accordance withAS/NZS 4361.2:2017 Guide to hazardous paint management prior to renovation or demolition works.	-	-	44
Roof hut 6	Throughout	Duct	Blue - upper coloured paint system	Lead Paint - Chip	58718-LCP-001-001	Above Threshold	-	Low	Good	Low	10m ²	0.33% lead content, maintain in current condition, over paint with a lead-free paint as part of ongoing maintenance. Remove under controlled conditions in accordance with AS/NZS 4361.2:2017 Guide to hazardous paint management prior to renovation or demolition works.	-	-	-
Level 1	Plant room 1	Plant and equipment	Beige - upper coloured paint system	Lead Paint - Chip	58718-LCP-001-004	Above Threshold	-	Low	Good	Low	50m ²	0.30% lead content, maintain in current condition, over paint with a lead-free paint as part of ongoing maintenance. Remove under controlled conditions in accordance with AS/NZS 4361.2:2017 Guide to hazardous paint management prior to renovation or demolition works.	-	-	45

Area / Level	Room & Location	Feature	Item Description	Hazard Type	Sample No.	Sample Status	Friability	Disturb. Potential	Condition	Risk Status	Approx. Quantity	Recommendations & Comments	Control Priority	Reinspect Date	Photo No.
Level 1	Plant room 1	Plant and equipment	Green - upper coloured paint system	Lead Paint - Chip	58718-LCP-001-005	Below Threshold	-	-	-	-	-	<0.1% lead content, not lead containing paint as described in AS 4361.2:2017 Guide to hazardous paint management	-	-	-
Level 1	Plant room 2	Door and door frame	Green - upper coloured paint system	Lead Paint - Chip	58718-LCP-001-006	Below Threshold	-	-	-	-	-	<0.1% lead content, not lead containing paint as described in AS 4361.2:2017 Guide to hazardous paint management	-	-	-
Exterior	Loading Dock	Air conditioning unit	R22 Hydrochlorofluorocarbon (HCFC)	Ozone Depleting Substances	-	Positive	-	Low	Good	Low	3 units	Hydrochlorofluorocarbon (HCFC), ozone depleting substances identified in the assessment that require removal during refurbishment or demolition works should be appropriately decanted and disposed of by a licensed contractor in accordance with the Ozone Protection and Synthetic Greenhouse Gas Management Amendment Regulation 2012.	-	-	-
Roof	Throughout	Air conditioning unit	R22 Hydrochlorofluorocarbon (HCFC)	Ozone Depleting Substances	-	Positive	-	Low	Good	Low	20 units	Hydrochlorofluorocarbon (HCFC), ozone depleting substances identified in the assessment that require removal during refurbishment or demolition works should be appropriately decanted and disposed of by a licensed contractor in accordance with the Ozone Protection and Synthetic Greenhouse Gas Management Amendment Regulation 2012.	-	-	-
Roof	Throughout	Air conditioning unit	R410A Hydrofluorocarbon (HFC)	Ozone Depleting Substances	-	Negative	-	-	-	-	-	Hydrofluorocarbon (HFC) non ozone depleting substances.	-	-	46
Roof	West end	Chiller	R134A Hydrofluorocarbon (HFC)	Ozone Depleting Substances	-	Negative	-	-	-	-	-	Hydrofluorocarbon (HFC) non ozone depleting substances.	-	-	-
Roof	West end	Chiller	Unknown refrigerant	Ozone Depleting Substances	-	Suspected Positive	-	Low	Good	Low	1 unit	No data was visible at the time of the assessment. Confirm status of suspected ozone depleting substances identified in the assessment.	-	-	47
Ground level	Shop E018 L W Rainbow	Air conditioning unit	Unknown refrigerant	Ozone Depleting Substances	-	Suspected Positive	-	Low	Good	Low	1 unit	No data was visible at the time of the assessment. Confirm status of suspected ozone depleting substances identified in the assessment.	-	-	-
Ground level	Shop 1 (Woolworths), rear store	Air conditioning unit	Unknown refrigerant	Ozone Depleting Substances	-	Suspected Positive	-	Low	Good	Low	1 unit	No data was visible at the time of the assessment. Confirm status of suspected ozone depleting substances identified in the assessment.	-	-	-
Ground level	Shop 1 (Woolworths), managers office	Air conditioning unit	Unknown refrigerant	Ozone Depleting Substances	-	Suspected Positive	-	Low	Good	Low	1 unit	No data was visible at the time of the assessment. Confirm status of suspected ozone depleting substances identified in the assessment.	-	-	-
Ground level	Shop 1 (Woolworths), cool room, freezer, milk fridge, meat cool room and deli room	Air conditioning unit	Unknown refrigerant	Ozone Depleting Substances	-	Suspected Positive	-	Low	Good	Low	9 units	No data was visible at the time of the assessment. Confirm status of suspected ozone depleting substances identified in the assessment.	-	-	-
Ground level	Shop 15 The Old Civic	Refrigerator	Unknown refrigerant	Ozone Depleting Substances	-	Suspected Positive	-	Low	Good	Low	1 unit	No data was visible at the time of the assessment. Confirm status of suspected ozone depleting substances identified in the assessment.	-	-	-
Ground level	Shop 27 Roaming Bird	Refrigerator	Unknown refrigerant	Ozone Depleting Substances	-	Suspected Positive	-	Low	Good	Low	1 unit	No data was visible at the time of the assessment. Confirm status of suspected ozone depleting substances identified in the assessment.	-	-	-
Ground level	Shop 30 Vina Bakehouse	Refrigerator	Unknown refrigerant	Ozone Depleting Substances	-	Suspected Positive	-	Low	Good	Low	1 unit	No data was visible at the time of the assessment. Confirm status of suspected ozone depleting substances identified in the assessment.	-	-	48
Ground level	Shop 318 Wholey Mackerel Seafoods	Refrigerator	R404A Hydrofluorocarbon (HFC)	Ozone Depleting Substances	-	Suspected Positive	-	Low	Good	Low	1 unit	Hydrochlorofluorocarbon (HCFC), ozone depleting substances identified in the assessment that require removal during refurbishment or demolition works should be appropriately decanted and disposed of by a licensed contractor in accordance with the Ozone Protection and Synthetic Greenhouse Gas Management Amendment Regulation 2012.	-	-	-

Area / Level	Room & Location	Feature	Item Description	Hazard Type	Sample No.	Sample Status	Friability	Disturb. Potential	Condition	Risk Status	Approx. Quantity	Recommendations & Comments	Control Priority	Reinspect Date	Photo No.
Ground level	Shop 32 Essential Meat	Refrigerator	R404A Hydrofluorocarbon (HFC)	Ozone Depleting Substances	-	Suspected Positive	-	Low	Good	Low	1 unit	Hydrochlorofluorocarbon (HCFC), ozone depleting substances identified in the assessment that require removal during refurbishment or demolition works should be appropriately decanted and disposed of by a licensed contractor in accordance with the Ozone Protection and Synthetic Greenhouse Gas Management Amendment Regulation 2012.	-	-	-
Level 1	Throughout plant rooms	-	-	-	-	-	-	-	-	-	-	No access beneath metal clad pipework.	-	-	-
Ground level	High voltage room and substation	-	-	-	-	-	-	-	-	-	-	No access at the time of the assessment, high voltage.	-	-	-
Ground level	Shop 1 (Woolworths), offices	-	-	-	-	-	-	-	-	-	-	No access at the time of the assessment due to height restrictions.	-	-	-
Ground level	Car Wash and Liquorland	-	-	-	-	-	-	-	-	-	-	No access at the time of the assessment - out of scope.	-	-	-

Appendix D: Photographs


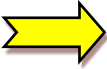

KEY	
	Confirmed or assumed ACM
	Confirmed or suspected other hazardous material type (SMF; PCB & lead paint)
	Confirmed or assumed/suspected non-ACM or other non-hazardous material



Photo 1. Exterior, western roof, roof covering – suspected non asbestos-containing bituminous membrane.



Photo 2. Exterior, north east roof, around ductwork – asbestos-containing fibre cement sheet.



Photo 3. Exterior, roof, throughout ductwork – asbestos-containing mastic sealant.



Photo 4. Exterior, roof, throughout ductwork reheat units – suspected asbestos-containing millboard insulation.



Photo 5. Exterior, roof hut 1, adjacent doorway, infill panel – asbestos-containing fibre cement sheeting.



Photo 6. Exterior, roof hut 1, north, awning and eaves – asbestos-containing fibre cement sheeting.



Photo 7. Exterior/interior, roof space above shopping mall, window frames – non asbestos-containing window caulking treat as asbestos-containing.



Photo 8. Exterior, roof, adjacent huts, original ductwork – suspected asbestos-containing mastic sealant.



Photo 9. Exterior, ground level, adjacent shop 12, above substation entry, infill panel – asbestos-containing fibre cement sheeting.



Photo 10. Exterior, throughout floor, expansion joints – non asbestos-containing mastic sealant.



Photo 11. Exterior, shop 33 loading docks, awning – asbestos-containing fibre cement sheeting.



Photo 12. Exterior, shop 33 loading dock, infill panel – non asbestos-containing infill panel.



Photo 13. Exterior, car park, beams – non asbestos-containing textured coating.



Photo 14. Exterior, maintenance room beneath ramp, door panels – non asbestos-containing fibre cement sheeting.



Photo 15. Exterior, car park scrubber machine room, electrical backing board – suspected asbestos-containing bituminous backing board.



Photo 16. Roof huts 1 to 6, throughout, original ductwork – suspected asbestos-containing mastic sealant.

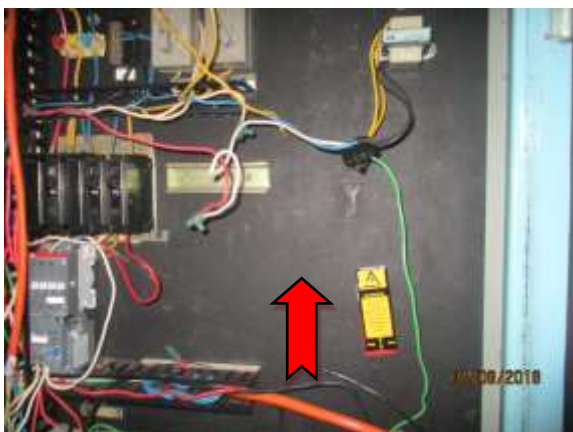


Photo 17. Roof hut 1 to 6, throughout, electrical backing board – suspected asbestos-containing bituminous backing board.



Photo 18. Roof hut 2, adjacent doorway, redundant – non asbestos-containing fibre cement sheet.



Photo 19. Roof level, roof space above shopping mall, beneath window, infill panels – asbestos-containing fibre cement sheeting.



Photo 20. Level 1, plant room 1, south east, single fire door – suspected-asbestos containing insulation.



Photo 21. Level 1, south-west, electrical backing board – suspected asbestos-containing bituminous backing board.



Photo 22. Level 1, plant room 1, red vessel – non asbestos-containing gasket material.



Photo 23. Level 1, plant room 1, ductwork – asbestos-containing mastic sealant.



Photo 24. Level 1, plant room 2, within electrical a/c switchboard – asbestos-containing debris.



Photo 25. Level 1, plant room 2, electrical backing board – suspected asbestos-containing bituminous backing board.



Photo 26. Level 1, plant room 2, north-east on ground – asbestos-containing fibre cement sheeting.



Photo 27. Level 1, plant room 3 (Woolworths), walls – asbestos-containing mastic sealant.



Photo 28. Level 1, shop 1 (Woolworths), back of house, floor – non asbestos-containing vinyl floor tiles.



Photo 29. Level 1, corridor throughout, floor – asbestos-containing vinyl floor tiles



Photo 30. Level 1, commercial suites, throughout, window frames – non asbestos-containing window caulking. Treat as asbestos-containing



Photo 31. Level 1, male w.c., cleaner's cupboard, wall divide – asbestos-containing fibre cement sheeting.



Photo 32. Ground level, shop 1 (Woolworths) sales floor, floor – non asbestos-containing green vinyl floor tiles.



Photo 33. Ground level, shop 1 (Woolworths) sales floor, floor – non asbestos-containing brown/green vinyl floor tiles.



Photo 34. Ground level, shop 1 (Woolworths) cash office, safe – suspected asbestos-containing internal insulation.

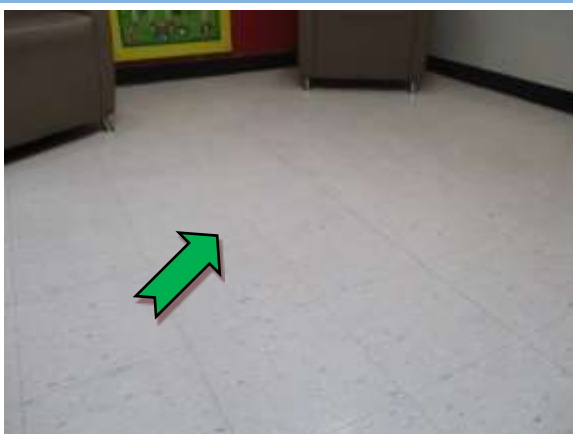


Photo 35. Ground level, baby change, floor – non asbestos-containing vinyl floor tiles.



Photo 36. Roof level, roof space above shopping mall, roof – suspected SMF-containing insulation batts.



Photo 37. Roof, throughout, pipe – suspected SMF-containing insulation.



Photo 38. Roof, throughout, duct – suspected SMF-containing insulation.



Photo 39. Exterior, maintenance room beneath ramp, adjacent door – suspected SMF-containing compressed ceiling tiles.



Photo 40. Level 1, plant room 3 (Woolworths), hot water heater – suspected SMF-containing insulation.

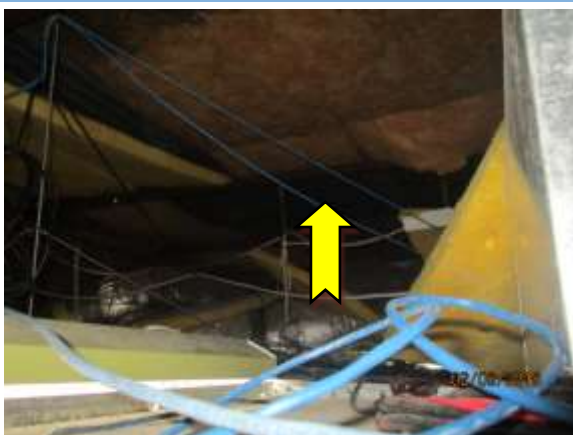


Photo 41. Level 1, throughout underside of roof – suspected SMF-containing sarking insulation.



Photo 42. Ground level, corridor to suite 11, penetrations – suspected SMF-containing pillow insulation.



Photo 43. Roof huts, throughout, fluorescent light fitting-single tube – suspected non PCB-containing capacitor.



Photo 44. Roof level, west roof section, duct – lead-containing green upper, blue lower coloured paint system.



Photo 45. Level 1, plant room 1, plant and equipment – lead-containing beige upper coloured paint system.



Photo 46. Roof, throughout, air conditioning unit – non ODS-containing air conditioning unit.



Photo 47. Roof, west end, chiller – suspected ODS-containing unknown refrigerant.



Photo 48. Ground level, shop 30 Vina Bakehouse – suspected ODS-containing refrigerator.



Photo 49. Exterior, liquorland, eastern elevation, wall cladding – non asbestos-containing fibre cement sheeting.

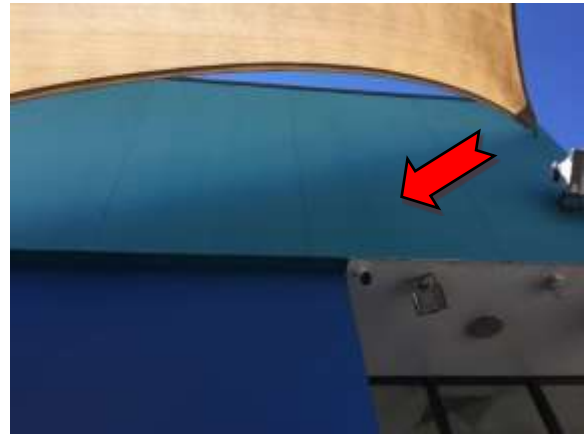


Photo 50. Exterior, car wash, surrounding building, at height – suspected asbestos-containing fibre cement sheeting.



Photo 51. Exterior, car park, retaining wall – non asbestos-containing fibre cement sheeting.

Appendix E: Areas Not Accessed

Given the constraints of practicable access encountered during this assessment, the following areas were not inspected. Assessments are restricted to those areas that are reasonably accessible at the time of our assessment with respect to the following:

- Without contravention of relevant statutory requirements or codes of practice.
- Without placing the Prensa consultant and/or others at undue risk.
- Without demolition or damage to finishes and structure.
- Excluding plant and equipment that was 'in service' and operational.

Documented below are the areas where the Prensa consultant encountered access restrictions during the assessment:

Areas Not Accessed

Underneath the concrete slab of all building structures at the site.

Exposed soils surrounding the building structures of the site.

Energised services, gas, electrical, pressurised vessel and chemical lines.

Height restricted areas above 2.7m or any area deemed inaccessible without the use of specialised access equipment.

Within cavities that cannot be accessed by the means of a manhole or inspection hatch.

Within voids or internal areas of plant, equipment, air-conditioning ducts etc.

Within service shafts, ducts etc., concealed within the building structure.

Within those areas accessible only by dismantling equipment.

Within totally inaccessible areas such as voids and cavities present but intimately concealed within the building structure.

All areas outside the Scope of Work.

Note:

If proposed works entail possible disturbance of any suspect materials in the above locations, or any other location not mentioned in **Appendix C: Hazardous Building Materials Register**, further investigation may be required as part of a hazardous building materials management and abatement program prior to the commencement of such works.

The presence of residual asbestos insulation on steel members, concrete surfaces, pipe work, equipment and adjacent areas remaining from prior removal works cannot normally be determined without extensive removal and damage to existing insulation, fixtures and fittings at the site.