

Legend

Boundary

Sewer

Existing contours

Existing site elements to be demolished

Proposed turf

Proposed concrete

Proposed tiles

Proposed deck

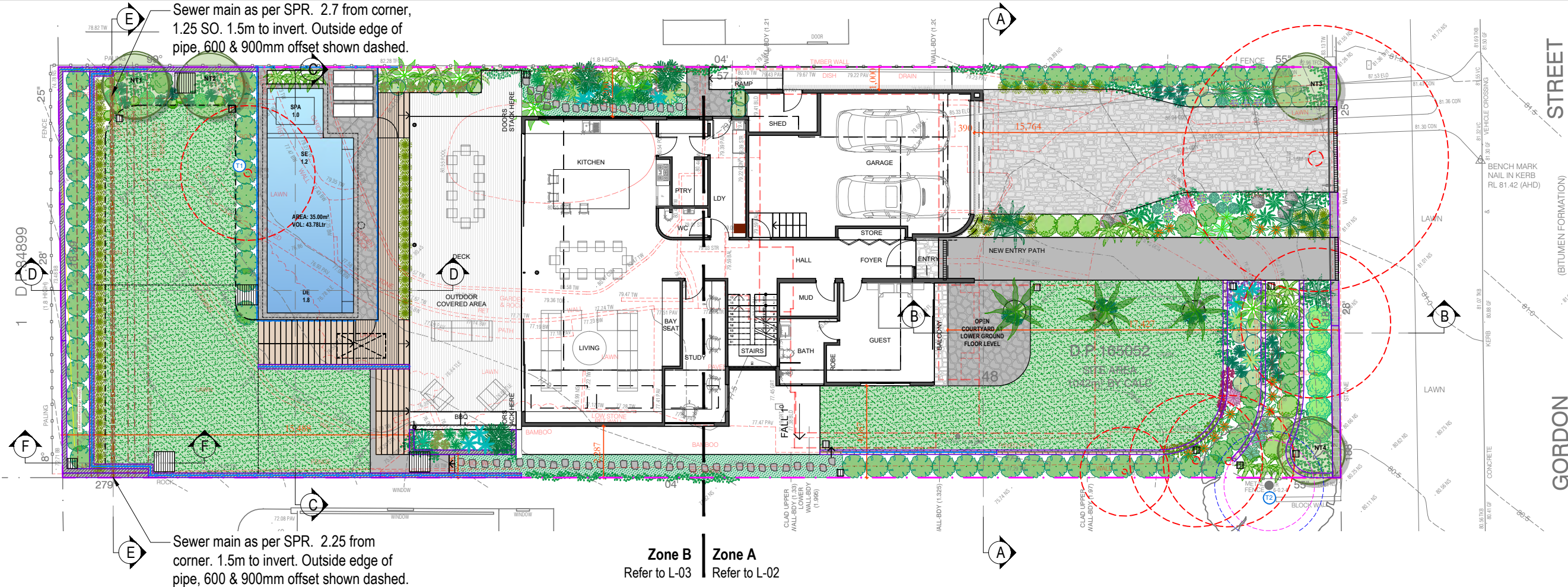
Galv. garden edge

Stepping stones in ground covers / pebbles

Masonry retaining wall

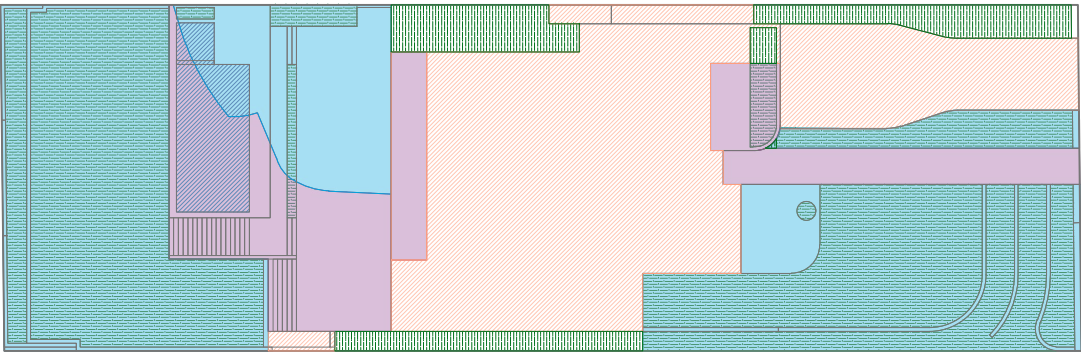
Existing tree to be retained. TPZ & SRZ shown dashed

Existing tree to be removed



Landscape Site Plan  
Scale 1:200

OPEN SPACE CALCULATIONS		Required		Proposed	
Site Area		1,042.00m <sup>2</sup>	100.00%		
Total Open Space - (TOS)		625.20m <sup>2</sup>	60.00%	646.56m <sup>2</sup>	62.05%
Pool - max 30% of TOS		193.97m <sup>2</sup>	30.00%	34.42m <sup>2</sup>	5.32%
Above ground - (dwelling) - 25% of TOS		161.64m <sup>2</sup>	25.00%	37.26m <sup>2</sup>	5.76%
Above ground - (other) - 40% of TOS		258.62m <sup>2</sup>	40.00%	133.51m <sup>2</sup>	20.65%
Landscape - 40% of TOS		258.62m <sup>2</sup>	40.00%	361.23m <sup>2</sup>	55.87%



Open Space Area

Pool component of Open Space

Landscape Area

Open Space Area (Above Ground)

Excluded From Open Space

Landscape Areas (Excluded from open space)

Open Space Calculations  
Scale 1:400

EXISTING TREE SCHEDULE										
Tree Number	Species	Height	Lowest Scaffold	Spread (m)				DBH	DAB	Remove / Retain
				N	S	E	W			
1	Callistemon viminalis	5m	4m	1	1	1	1	39cm	44cm	Remove
2	Olea europaea subsp. cuspidata	4m	2m	2	1	1	2	20cm	30cm	Retain

Note:

- Contractors to check and verify all dimensions and all levels on site prior to any works.
- Any discrepancies should be immediately referred to Serenescapes Landscape Designs.
- All work to comply with B.C.A. Statutory Authorities and relevant Australian Standards.
- Dimensions recognised over scaling. All measurements are in millimetres.
- Copyright Serenescapes Landscape Designs 2023.



Po Box 377  
Manly 1655  
Tel: 0422 521 871  
power@sketcharc.com.au  
www.sketcharc.com.au

**Serenescapes Landscape Designs**  
ABN 71 611 726 222

Suite 54, 14 Narabang Way  
Belrose NSW 2085  
Tel: 02 9986 2157  
info@serenescapes.com.au  
www.serenescapes.com.au

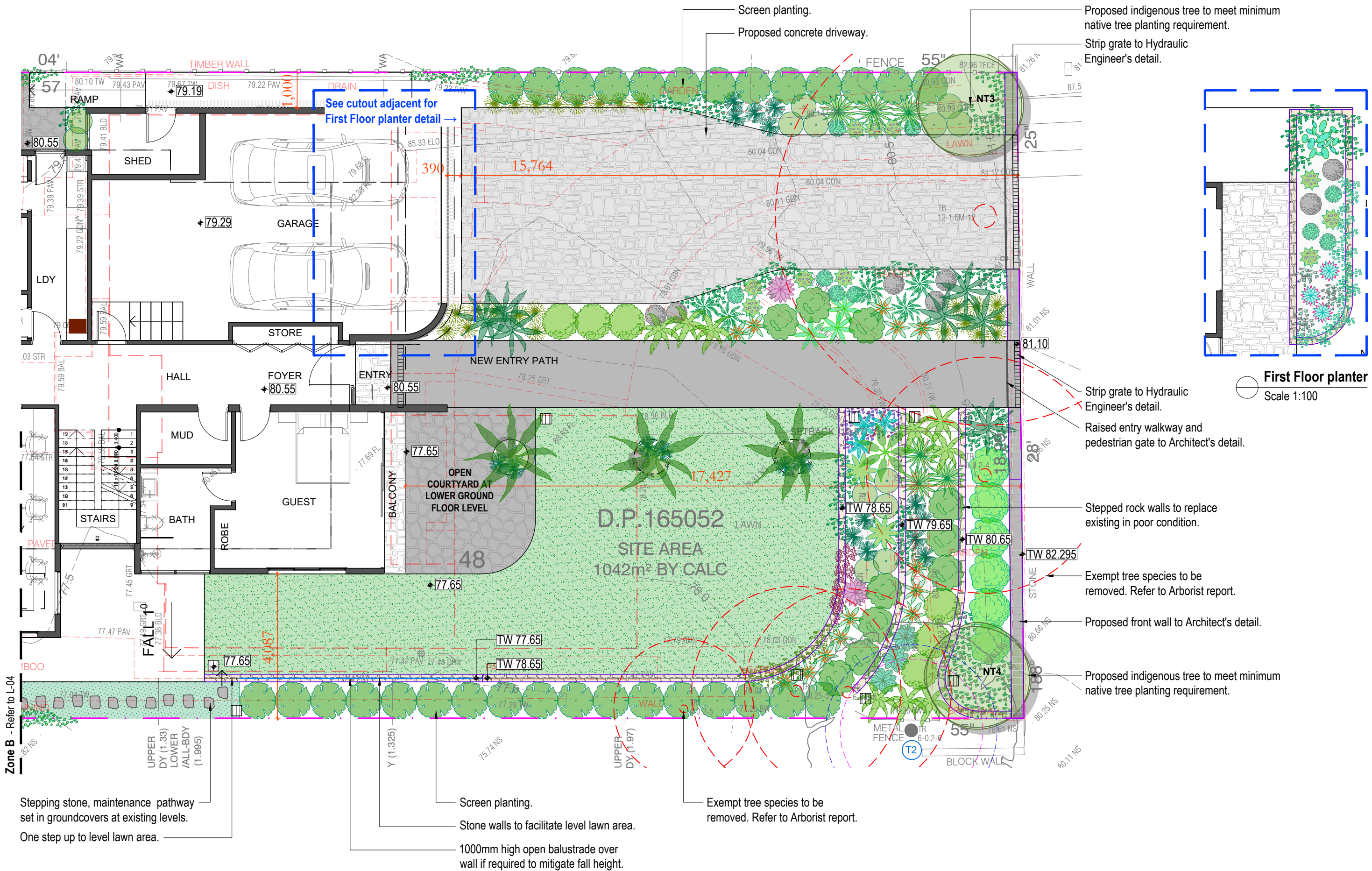
Client: **Private Residence**  
Site Address: **69B Gordon Street, CLONTARF**

Drawing Title: **Landscape Site Plan**  
Drawn by: **Ben Danks**  
Project Number: **251290**  
Scale: **As shown @A3**  
Sheet Number: **L-01 of 12**

Rev:	Date:	Issue:	Checked:
A	25/02/2025	Preliminary Issue	BF
B	26/03/2025	Preliminary Issue	BF
C	16/04/2025	Preliminary Issue	BF
D	14/05/2025	DA Issue	BF







Stepping stone, maintenance pathway set in groundcovers at existing levels.  
One step up to level lawn area.





ZONE A PROPOSED PLANT SCHEDULE

KEY	BOTANICAL NAME	COMMON NAME	QTY	MATURE HEIGHT	POT SIZE
AC*	ARCHONTOPHOENIX CUNNINGHAMIANA	BANGALOW PALM	3	8m	45Ltr
PR	PHOENIX ROEBELENI	PYGMY DATE PALM	7	3m	45Ltr
TL#	TRISTANIOPSIS LAURINA 'LUSCIOUS'	LUSCIOUS WATER GUM	2	8m	45Ltr

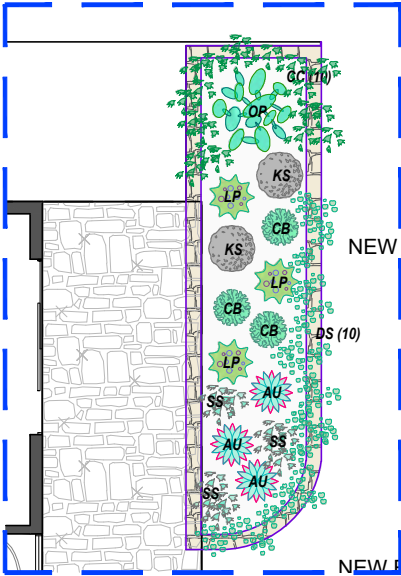
\* Denotes species selected from Trees Near Me NSW Sydney Coastal Sandstone Foreshores Forest and their cultivars.  
# Denotes species selected from Manly DCP - Schedule 4 - Part B - Native Tree Selection

SHRUBS						
AD	ADENANTHOS 'SILVER STREAK'	WOOLLY BUSH	6	2m	140mm	
AI	ALCANTAREA IMPERIALIS 'SILVER PLUM'	SILVER PLUM BROMELIAD	2	1.5m	300mm	
AM	ARTHROPODIUM 'MATAPOURI BAY'	RENGA RENG LILY	3	0.9m	200mm	
AN	ALPINIA NUTANS	NATIVE CARDAMON	6	1.2m	200mm	
BS*	BLECHNUM GIBBUM 'SILVER LADY'	SILVER LADY FERN	3	1m	200mm	
BY	BESCHORNERIA YUCCOIDES	MEXICAN LILY	3	1m	200mm	
CA*	CORREA ALBA	WHITE CORREA	10	1.5m	200mm	
CP*	CRINUM PEDUNCULATUM	RIVER LILY	2	1m	200mm	
EC	ECHIUM CANDICANS	PRIDE OF MADEIRA	6	2m	200mm	
EE	ALOCASIA MACRORRHIZOS	GIANT TARO	1	2-2.5m	200mm	
HH	HELICONIA 'HOT RIO NIGHTS'	HOT RIO NIGHTS	9	3m	200mm	
HS	HELICONIA PSITTACORUM 'SASSY'	SASSY HELICONIA	13	1m	200mm	
SR*	SYZYGIIUM AUSTRALE 'RESILIENCE'	RESILIENCE	32	3m	300mm	
ZF	ZAMIA FURFURACEA	CARDBOARD PLANT	5	1m	200mm	

GRASSES / GROUND COVERS						
CB	CRASSULA 'BLUE BIRD'	BLUE BIRD JADE PLANT	6	0.7m	200mm	
CC*	CASUARINA GLAUCA 'COUSIN IT'	COUSIN IT	16	0.5m	140mm	
CG*	CARPOBROTUS 'AUSSIE RAMBLER'	PIG FACE	3	0.2m	140mm	
DC*	DIANELLA CAERULEA	BLUE FLAX LILY	18	0.6m	140mm	
FJ	FARFUGIUM JAPONICUM	TRACTOR SEAT PLANT	16	0.6m	200mm	
HV*	HARDENBERGIA VIOLACEA	PURPLE CORAL PEA	15	0.2m	140mm	
KR	KENNEDIA RUBICUNDA	RUNNING POSTMAN	5	-	140mm	
KS	KALANCHOE 'SILVER SPOONS'	SILVER SPOONS	8	0.6m	140mm	
LP	LIMONIUM PEREZII	STATICE	7	0.5m	140mm	
MR	MANDEVILLA 'ALOHA RED'	DEEP RED MANDEVILLA	3	0.6	200mm	
NG	NEOMARICA GRACILIS	WALKING IRIS	22	0.6m	140mm	
PJ*	PANDOREA JASMINOIDES	BOWER VINE	3	-	200mm	
PK*	POA LABILLARDIERI 'ESKDALE'	ESKDALE	24	0.7m	140mm	
VH*	VIOLA HEDERACEA	NATIVE VIOLET	15	0.1m	tubes	



Refer to L-02 for location



First Floor planter

Scale 1:100

PROPOSED PLANT SCHEDULE - FIRST FLOOR PLANTER

KEY	BOTANICAL NAME	COMMON NAME	QTY	MATURE HEIGHT	POT SIZE
OP	<b>SHRUBS</b> OPUNTIA FICUS-INDICA 'BURBANK SPINELESS'	MICKEY MOUSE CACTUS	1	2m	200mm
AU	<b>GRASSES / GROUND COVERS</b> AGAVE 'BLUE GLOW'	BLUE GLOW AGAVE	3	0.6m	200mm
CB	CRASSULA 'BLUE BIRD'	BLUE BIRD JADE PLANT	3	0.7m	200mm
CG*	CARPOBROTUS 'AUSSIE RAMBLER'	PIG FACE	7	0.2m	140mm
DS'	DICHONDRA ARGENTEA 'SILVER FALLS'	SILVER FALLS	10	0.3m	140mm
KS	KALANCHOE 'SILVER SPOONS'	SILVER SPOONS	2	0.6m	140mm
LP	LIMONIUM PEREZII	STATICE	3	0.5m	140mm
SS	SENECIO SERPENS	BLUE CHALK STALKS	3	0.2m	140mm



Note:

- Contractors to check and verify all dimensions and all levels on site prior to any works.
- Any discrepancies should be immediately referred to Serenescapes Landscape Designs.
- All work to comply with B.C.A. Statutory Authorities and relevant Australian Standards.
- Dimensions recognised over scaling. All measurements are in millimetres.
- Copyright Serenescapes Landscape Designs 2023.



Po Box 377  
Manly 1655  
Tel: 0422 521 871  
power@sketcharc.com.au  
www.sketcharc.com.au



Serenescapes Landscape Designs  
ABN 71 611 726 222

Suite 54, 14 Narabang Way  
Belrose NSW 2085  
Tel: 02 9986 2157  
info@serenescapes.com.au  
www.serenescapes.com.au

Client:  
Private Residence

Site Address:  
69B Gordon Street,  
CLONTARF

Drawing Title:  
Zone A - Planting Plan (First Floor)

Drawn by:  
Ben Danks  
TLA Member

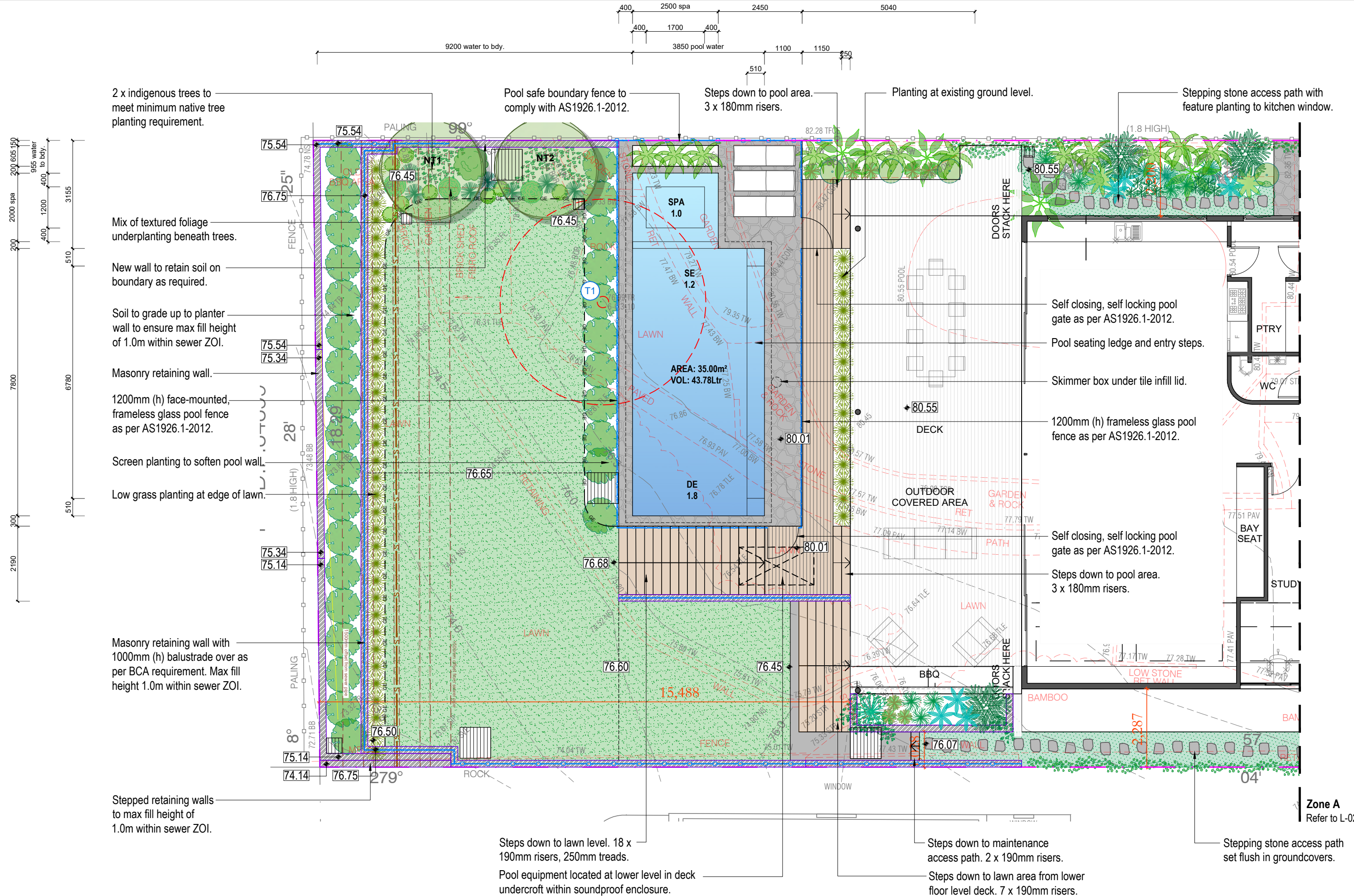
Project Number:  
251290

Scale:  
1:100 @ A3

Sheet Number:  
L-03a of 12

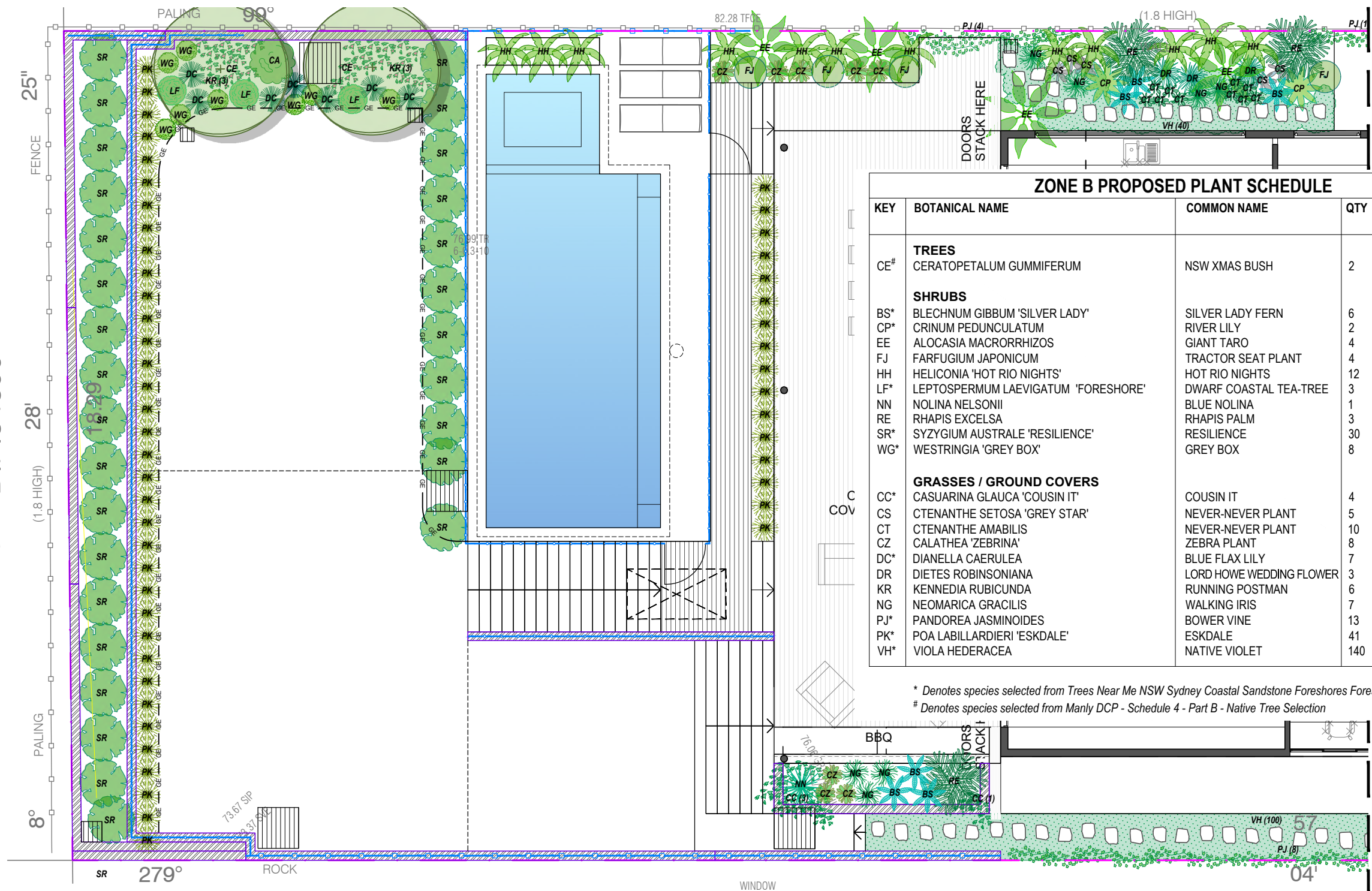
Rev:	Date:	Issue:	Checked:
A	25/02/2025	Preliminary Issue	BF
B	26/03/2025	Preliminary Issue	BF
C	16/04/2025	Preliminary Issue	BF
D	14/05/2025	DA Issue	BF





Zone A  
Refer to L-02





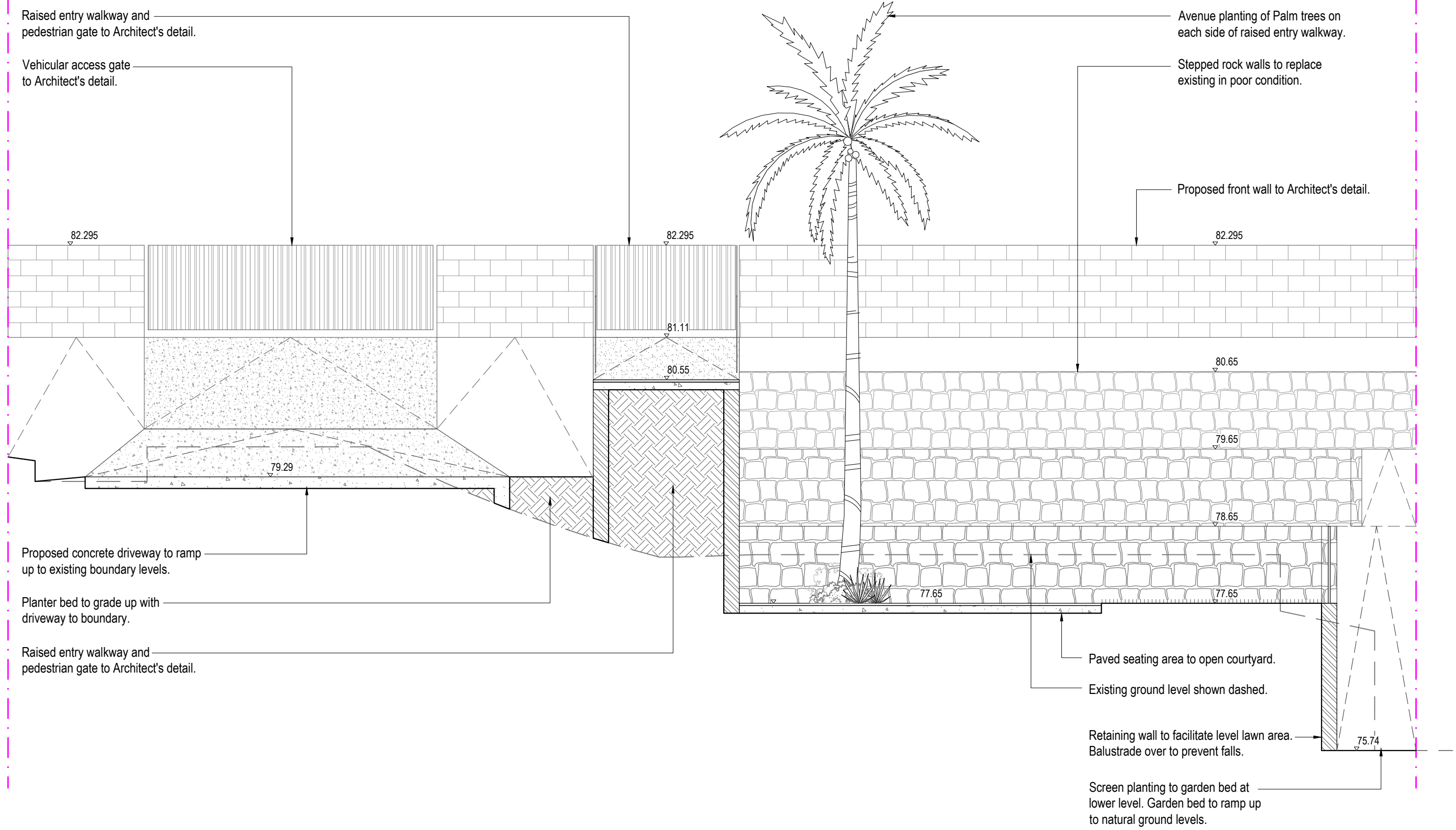
ZONE B PROPOSED PLANT SCHEDULE					
KEY	BOTANICAL NAME	COMMON NAME	QTY	MATURE HEIGHT	POT SIZE
CE#	<b>TREES</b>				
	CERATOPETALUM GUMMIFERUM	NSW XMAS BUSH	2	7m	45Ltr
BS*, CP*, EE, FJ, HH, LF*, NN, RE, SR*, WG*	<b>SHRUBS</b>				
	BLECHNUM GIBBUM 'SILVER LADY'	SILVER LADY FERN	6	1m	200mm
	CRINUM PEDUNCULATUM	RIVER LILY	2	1m	200mm
	ALOCASIA MACRORRHIZOS	GIANT TARO	4	2-2.5m	200mm
	FARFUGIUM JAPONICUM	TRACTOR SEAT PLANT	4	0.6m	200mm
	HELICONIA 'HOT RIO NIGHTS'	HOT RIO NIGHTS	12	3m	200mm
	LEPTOSPERMUM LAEVIGATUM 'FORESHORE'	DWARF COASTAL TEA-TREE	3	0.5m	200mm
	NOLINA NELSONII	BLUE NOLINA	1	2m	300mm
	RHAPIS EXCELSA	RHAPIS PALM	3	3m	200mm
	SYZYGIIUM AUSTRALE 'RESILIENCE'	RESILIENCE	30	3m	300mm
	WESTRINGIA 'GREY BOX'	GREY BOX	8	0.5m	200mm
	<b>GRASSES / GROUND COVERS</b>				
	CASUARINA GLAUCA 'COUSIN IT'	COUSIN IT	4	0.5m	140mm
CC*	CTENANTHE SETOSA 'GREY STAR'	NEVER-NEVER PLANT	5	0.8m	200mm
CS	CTENANTHE AMABILIS	NEVER-NEVER PLANT	10	0.3m	200mm
CT	CALATHEA 'ZEBRINA'	ZEBRA PLANT	8	0.8	140mm
CZ	DIANELLA CAERULEA	BLUE FLAX LILY	7	0.6m	140mm
DC*	DIETES ROBINSONIANA	LORD HOWE WEDDING FLOWER	3	1.5m	140mm
DR	KENNEDIA RUBICUNDA	RUNNING POSTMAN	6	-	140mm
KR	NEOMARICA GRACILIS	WALKING IRIS	7	0.6m	140mm
NG	PANDOREA JASMINOIDES	BOWER VINE	13	-	200mm
PJ*	POA LABILLARDIERI 'ESKDALE'	ESKDALE	41	0.7m	140mm
SR*	VIOLA HEDERACEA	NATIVE VIOLET	140	0.1m	tubes

\* Denotes species selected from Trees Near Me NSW Sydney Coastal Sandstone Foreshores Forest and their cultivars.  
# Denotes species selected from Manly DCP - Schedule 4 - Part B - Native Tree Selection



Zone A  
Refer to L-03





Sectional Elevation AA  
Scale 1:50





Self closing, self locking pool gate as per AS1926.1-2012.

1200mm (h) frameless glass pool fence as per AS1926.1-2012.

Steps down to pool terrace.

Steps down to lawn level.

Spa to Engineer's details.

Spillover weir wall to Engineer's details.

Step entry and pool ledge shown behind.

Existing ground line shown dashed.

Wall to facilitate step entry to lawn.

Steps down to lawn area from lower floor level deck behind.

Fill soil over existing ground level shown dashed.

Retaining wall to facilitate level lawn area.

Sectional Elevation CC  
Scale 1:50

Note:  
• Contractors to check and verify all dimensions and all levels on site prior to any works.  
• Any discrepancies should be immediately referred to Serenescapes Landscape Designs.  
• All work to comply with B.C.A. Statutory Authorities and relevant Australian Standards.  
• Dimensions recognised over scaling. All measurements are in millimetres.  
• Copyright Serenescapes Landscape Designs 2023.



Po Box 377  
Manly 1655  
Tel: 0422 521 871  
power@sketcharc.com.au  
www.sketcharc.com.au

  
**Serenescapes Landscape Designs**  
ABN 71 611 726 222

Suite 54, 14 Narabang Way  
Belrose NSW 2085  
Tel: 02 9986 2157  
info@serenescapes.com.au  
www.serenescapes.com.au

Client:  
**Private Residence**

Site Address:  
**69B Gordon Street,  
CLONTARF**

Drawing Title:  
**Sectional Eelevations**

Drawn by:  
**Ben Danks**  
TLA Member

Project Number:  
**251290**

Scale:  
**1:50 @ A3**

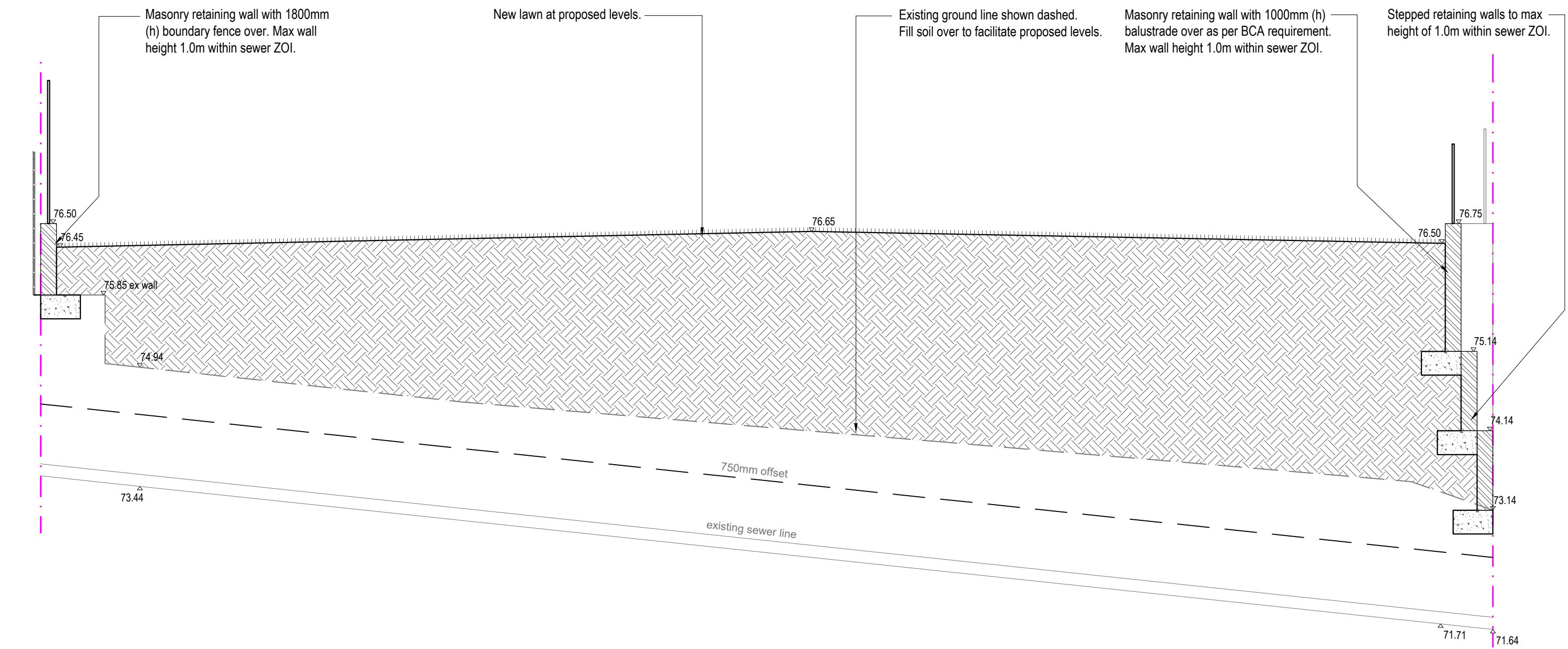
Sheet Number:  
**L-08 of 12**

Rev:	Date:	Issue:	Checked:
A	25/02/2025	Preliminary Issue	BF
B	26/03/2025	Preliminary Issue	BF
C	16/04/2025	Preliminary Issue	BF
D	14/05/2025	DA Issue	BF









Section EE - along sewer line  
Scale 1:50

Note: Footings indicative only.  
To Engineer's details.







## SITE PREPARATION

### PROTECTION OF EXISTING TREES:

## Protection of trees on development sites.

Fencing is to consist of Chain wire mesh panels at least 1.8m in height, anchored with concrete feet.

According to AS 4970-2009, activities excluded from the TPZ include but are not limited to;

- ## REMOVAL OF EXISTING TREES

## ELIMINATE WEEDS

## EXCAVATION & SUB SOIL PREPARATION

## SUB SOIL DRAINAGE

Install perforated corrugated ag. line 75-100mm Dia. with geotextile filter sock & backfill to a minimum

## REUSE EXISTING TOPSOIL

Existing site topsoil should be salvaged & appropriately stockpiled where possible.

## IMPORTED TOPSOIL

Quality System: AS 4419 or as specified below.

Turf Areas: 'Turf Underlay' as supplied by, ANL p: 02 9450 1444 or approved alternative.

Planting in Planter Boxes: Soil mix A - 'Planter Box Mix', Soil mix B - Washed River Sand as supplied by, ANL p: 02 9450 1444 or approved alternative.

## PLANTING

Balance of Crown: Supply plants with max. variation in crown bulk on opposite sides of stem axis, +/- 20%

## STAKING

Supply and install Link Edge 75mm as per Landscape Plan. Compact and level the base in the required area as indicated on Landscape Plan. Half hammer spikes into pre-punched holes (approx. 4 spikes every 3m length) starting from the first hole in the end of the Link Edge. Use spike washers supplied by manufacturer. Half hammer subsequent spikes in pivotal areas along the length. (Especially at points where a curve is required). Connect lengths together by using fish-plate connectors supplied by manufacturer.

Check position of Link Edge is correct before hammering spikes firmly into ground.

New dripline irrigation system to be installed with backflow preventer and with timers. Irrigation system to be designed and installed to local codes.

The entire irrigation system shall be fully automated and provide drip irrigation to all tree, shrub and ground cover zones. It is the Contractor's responsibility to verify water pressure available and determine all design-built parameters prior to any installation and sizing of irrigation components. Irrigation system to be connected to water tank to supplement water from mains.

Supply and install timber deck, stairs and bench seats to BCA requirements and to Australian Standards.

All framing timber posts to be treated pine. All decking, steps and bench seats to be hardwood. Decking to be fixed using stainless steel countersink nails or screws. Decking boards up to 86mm space with 3mm gaps, boards over 86mm space with 5mm gaps. Stagger joints and ensure all joins in decking boards sit over a joist. Pre drill nail holes into decking boards to avoid splitting. Nail to be 12mm from edges and ends of boards. Nails driven flush with surface (not punched). Each decking board should be nailed to each joist with two nails as per AS1684 or in accordance with manufacturers instructions.

Supply and install 2 coats of oil. Ensure minimum 300mm clearance between bearer & ground level to

provide adequate airflow around structure.

Quality system: AS 4454

All planting area impacted by building works to receive 50-75mm of garden Mulch, Hort-Bark, ANL p: 02 9450 1444 or approved alternative. Keep mulch 100mm away from plant stem & form a well to stop excessive water runoff. Finish flush with adjacent surfaces.

New turf- Sir Walter Soft Leafed Buffalo.

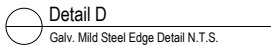
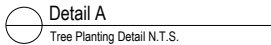
Excavate / grade all areas to be turfed to 120mm below finished levels. Ensure that all surface runoff is directed away from buildings. Ensure that no pooling or ponding will occur. Further rip the sub-grade to 150mm. Install 100mm of imported turf underlay. Rolls to be closely butted and laid in a brickwork pattern. Fill any small gaps with topsoil and water thoroughly.



Water in immediately after plant installation & allow for soil settlement. For the first 2 to 4 weeks after planting, the root zone & immediate surrounds must be kept moist. Continue watering until plants have

## STEPPING STONES

Install each stepping stone on a 75mm thick mortar bed and space according to plan. Stones to finish flush with adjoining levels. Fill gaps with groundcover planting as specified.

All retaining walls & planter boxes to be constructed to Engineer's details. Ensure all internal surfaces are waterproofed. Geotextile wrapped ag. drainage line backfilled with aggregate is to be installed behind all retaining walls & connected to stormwater in accordance with Sydney Water regulations. All planter boxes are to have Atlantis drainage cell (or approved alternative) installed & connected to stormwater in accordance with Sydney Water regulations.



<p><small>Note:</small></p> <ul style="list-style-type: none"> <li>Contractors to check and verify all dimensions and all levels on site prior to any works.</li> <li>Any discrepancies should be immediately referred to Serenescapes Landscape Designs.</li> <li>All work to comply with S.C.A. Statutory Authorities and relevant Australian Standards.</li> <li>Dimensions recognised over scaling. All measurements are in millimetres.</li> <li>Copyright Serenescapes Landscape Designs 2023.</li> </ul>	 <p><b>sketchArc</b></p>	<p>Po Box 377 Manly 1655 Tel: 0422 521 871 power@sketcharc.com.au www.sketcharc.com.au</p>	 <p><b>Serenescapes Landscape Designs</b> ABN 71 611 726 222</p>	<p>Suite 54, 14 Narabang Way Belrose NSW 2085 Tel: 02 9986 2157 info@serenescapes.com.au www.serenescapes.com.au</p>	Client:	Private Residence				Drawing Title: Landscape Specification & Details				Rev:	Date:	Issue:	Checked:
					Site Address:	69B Gordon Street, CLONTARF				Drawn by:	Project Number:	Scale:	Sheet Number:	A	25/02/2025	Preliminary Issue	BF
										Ben Danks TLA Member	251290	NTSC @ A3	L-12 of 12	B	26/03/2025	Preliminary Issue	BF
														C	16/04/2025	Preliminary Issue	BF
														D	14/05/2025	DA Issue	BF