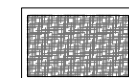
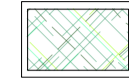



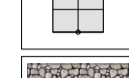





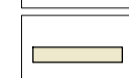



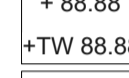
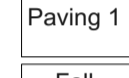




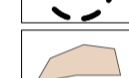



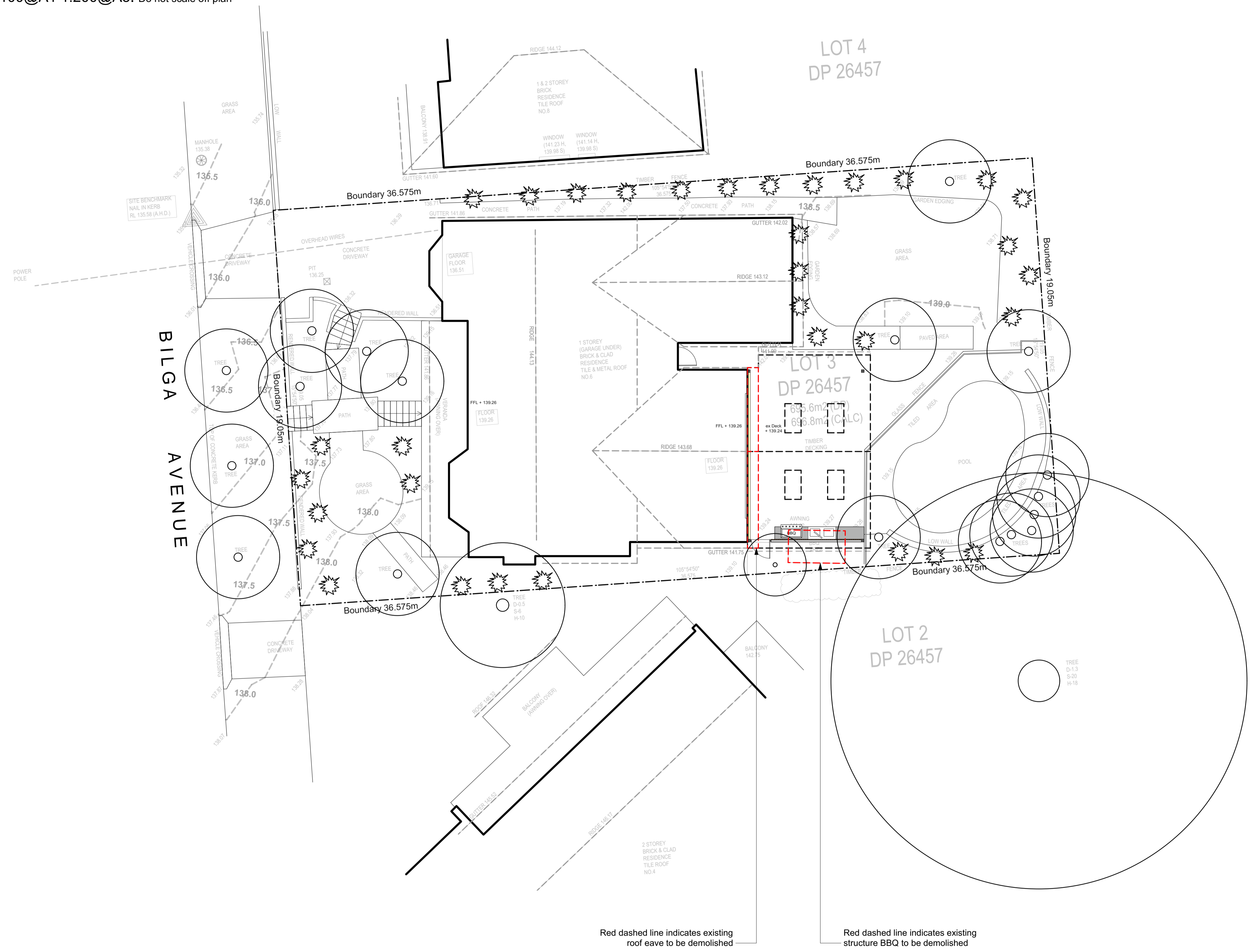
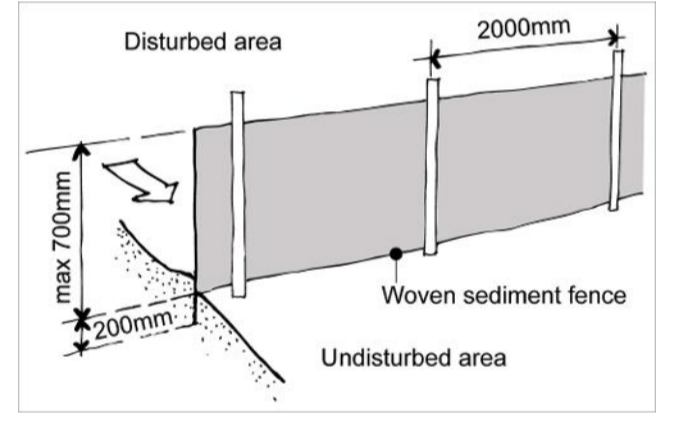


- Legend**
-  MULCH AREA
 -  TURF AREA
 -  TIMBER DECKING
 -  CONCRETE PAVING
 -  UNIT PAVING
 -  STAIRS
 -  PEBBLE
 -  GRAVEL
 -  COBBLESTONE
 -  TIMBER
 -  WATER
 -  MASONRY RETAINING WALL
 -  STONE RETAINING WALL
 -  TIMBER RETAINING WALL
 -  BOULDER RETAINING WALL
 -  SITE OR WORKS BOUNDARY
 -  PROPOSED LEVEL
 -  TOP OF WALL LEVEL
 -  MATERIAL NAME
 -  SURFACE FALL DIRECTION
 -  SURFACE DRAINS
 -  SURVEY (50% GREY LINES)
 -  EXISTING TREE TO RETAIN
 -  EXISTING TREE TO REMOVE
 -  EXISTING ROCK OUTCROP



THIS PLAN IS TO BE READ IN CONJUNCTION WITH THE CONDITIONS OF DEVELOPMENT CONSENT
 DA2024/0760



Sedimentation Control Fence
 Not to scale.
 Source: www.yourhome.gov.au

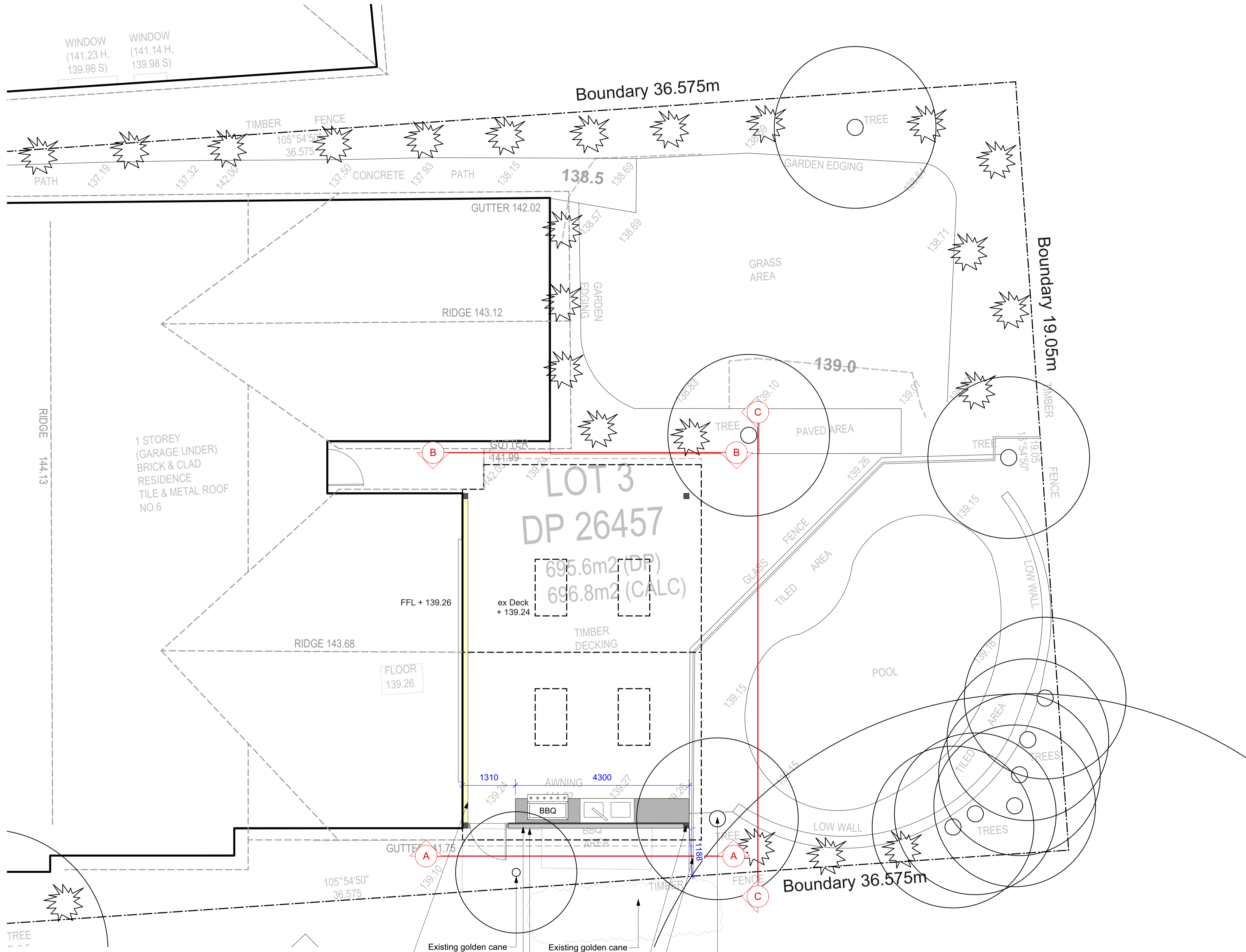
Red dashed line indicates existing roof eave to be demolished
 Red dashed line indicates existing structure BBQ to be demolished

Notes:
 >Do not scale off plan.
 >Contractors to check all measurements onsite before quoting or commencing work.
 >If abnormalities arise, contact the Landscape Architect.
 >This design is copyright and is not to be reproduced in any way without written consent of Jamie King Landscape Architect.

B	28/05/24	For DA.	
A	20/12/23	DRAFT issue for review.	
PROJECT	6 Bilga Avenue, Bilgola Plateau		PROJECT # 24034
CLIENT	Get Smart Landscaping		DATE # See above
DWG	Site Plan	SCALE @ A1 See Plan	DWG # Sht-101
		DRAWN SA	CHKD JK
			REVISION



JAMIE KING
 LANDSCAPE ARCHITECT
 DESIGN ● APPROVE ● MANAGE



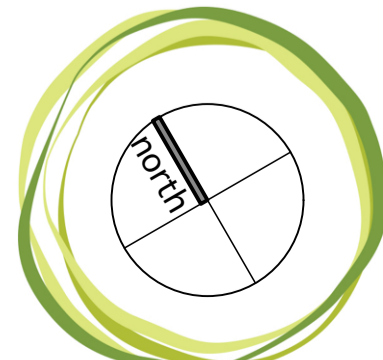
northern beaches council
THIS PLAN IS TO BE READ IN CONJUNCTION WITH THE CONDITIONS OF DEVELOPMENT CONSENT DA2024/0760

Legend	
	MULCH AREA
	TURF AREA
	TIMBER DECKING
	CONCRETE PAVING
	UNIT PAVING
	STAIRS
	PEBBLE
	GRAVEL
	COBBLESTONE
	TIMBER
	WATER
	MASONRY RETAINING WALL
	STONE RETAINING WALL
	TIMBER RETAINING WALL
	BOULDER RETAINING WALL
	SITE OR WORKS BOUNDARY
	+ 88.88 PROPOSED LEVEL
	+TW 88.88 TOP OF WALL LEVEL
	Paving 1 MATERIAL NAME
	Fall SURFACE FALL DIRECTION
	SURFACE DRAINS
	+88.88 SURVEY (50% GREY LINES)
	EXISTING TREE TO RETAIN
	EXISTING TREE TO REMOVE
	EXISTING ROCK OUTCROP

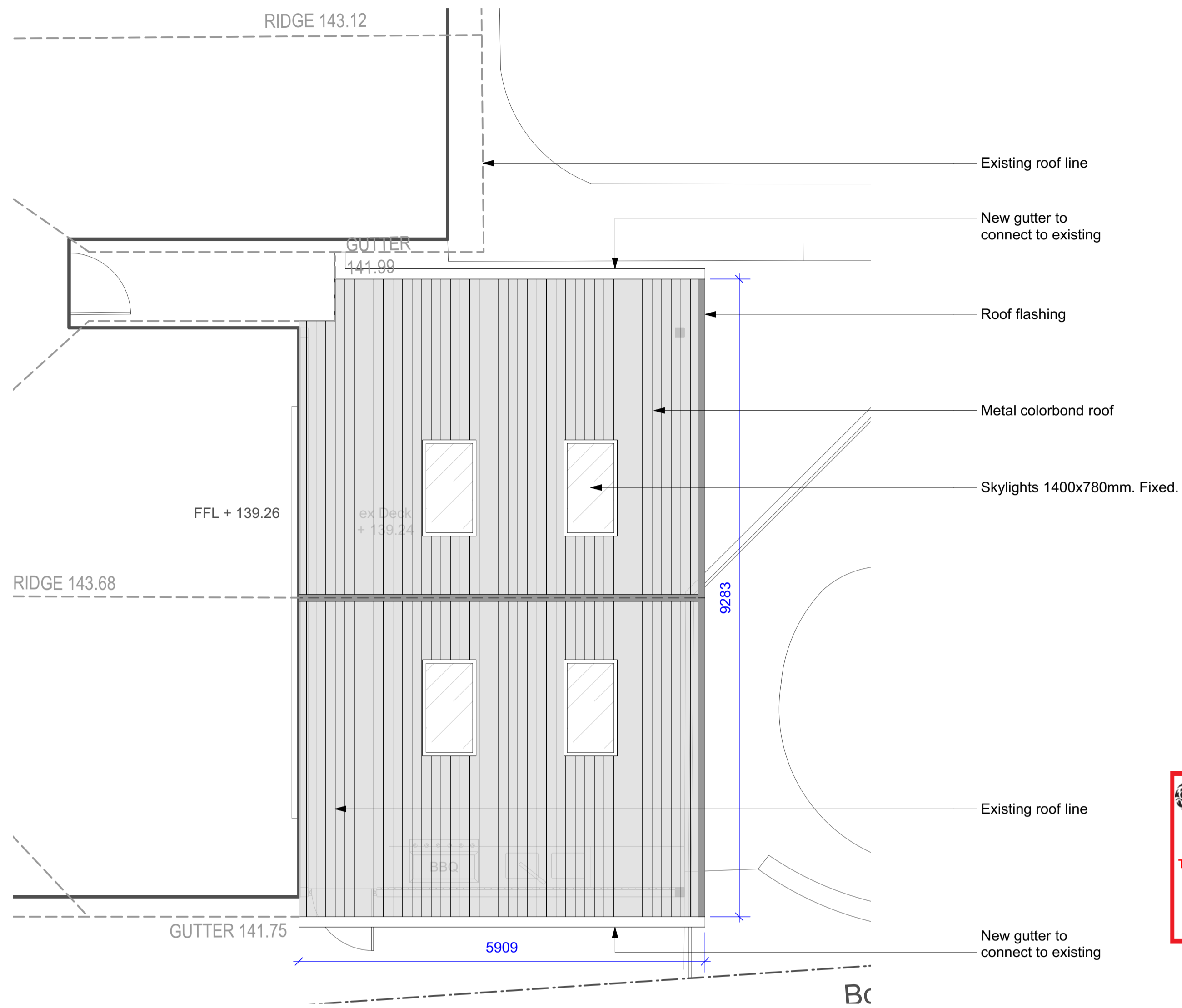
- New clad stud wall to allow for posts to support new pergola. No change to glazing or openings.
- Outdoor kitchen
- New solid wall with batten cladding
- Existing golden cane
- Existing golden cane
- Post integrated in wall
- Existing pool fence. Made compliant for NCZ's around BBQ.
- Existing golden cane

Notes:
 >Do not scale off plan.
 >Contractors to check all measurements onsite before quoting or commencing work.
 >If abnormalities arise, contact the Landscape Architect.
 >This design is copyright and is not to be reproduced in anyway without written consent of Jamie King Landscape Architect.

B	28/05/24	For DA.	
A	20/12/23	DRAFT	issue for review.
ISSUE	DATE	REVISION	
PROJECT	6 Bilga Avenue, Bilgola Plateau		PROJECT # 24034
CLIENT	Get Smart Landscaping		DATE # See above
DWG	Backyard Detail Plan		SCALE @ A1 See Plan
	DRAWN SA	SA	DWG # Sht-102
	CHKD JK	JK	REVISION



JAMIE KING
 LANDSCAPE ARCHITECT
 DESIGN ● APPROVE ● MANAGE



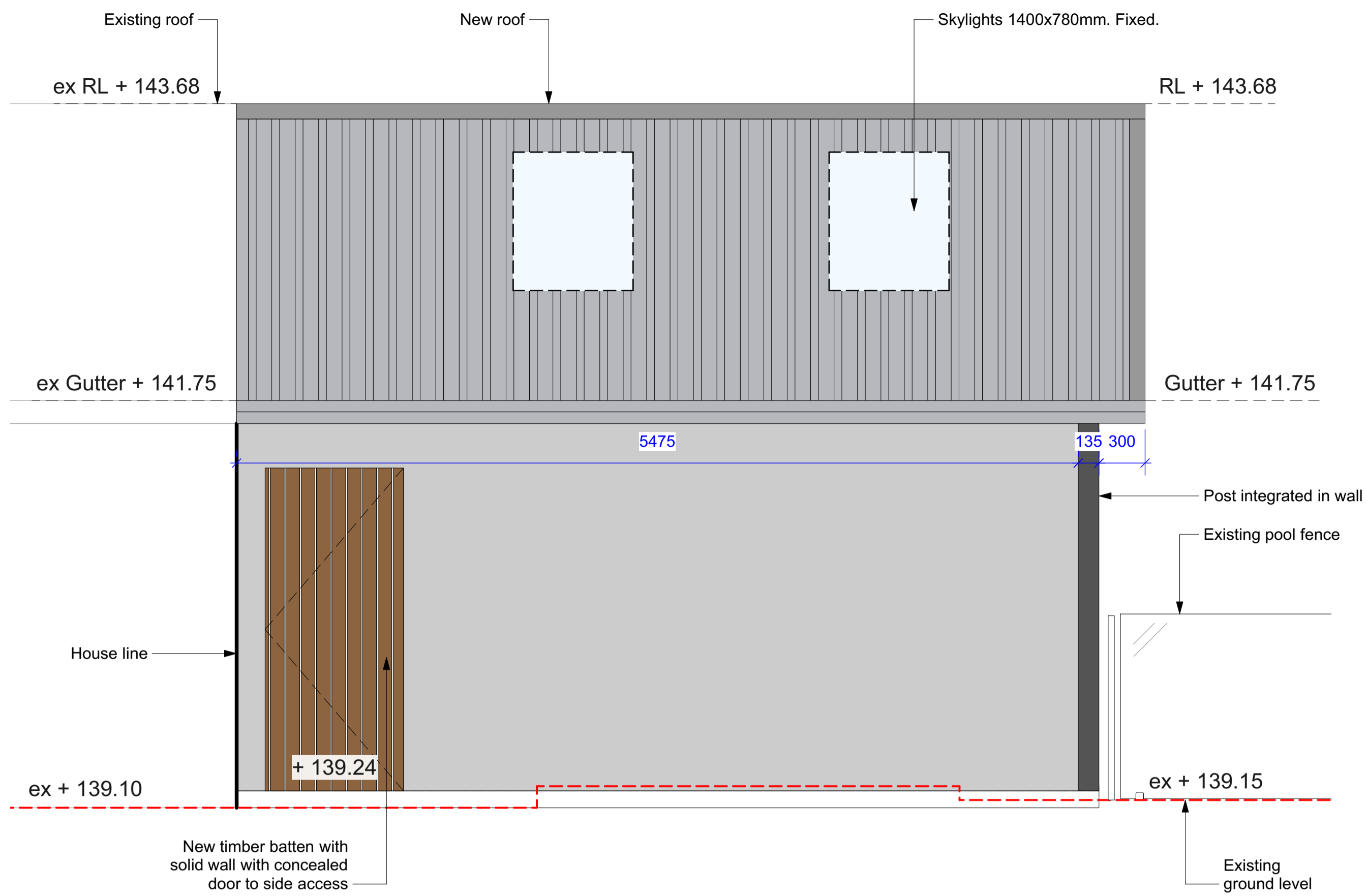

 THIS PLAN IS TO BE READ IN
 CONJUNCTION WITH
 THE CONDITIONS OF DEVELOPMENT
 CONSENT
 DA2024/0760

Notes:
 >Do not scale off plan.
 >Contractors to check all measurements onsite before quoting or commencing work.
 >If abnormalities arise, contact the Landscape Architect.
 >This design is copyright and is not to be reproduced in anyway without written consent of Jamie King Landscape Architect.

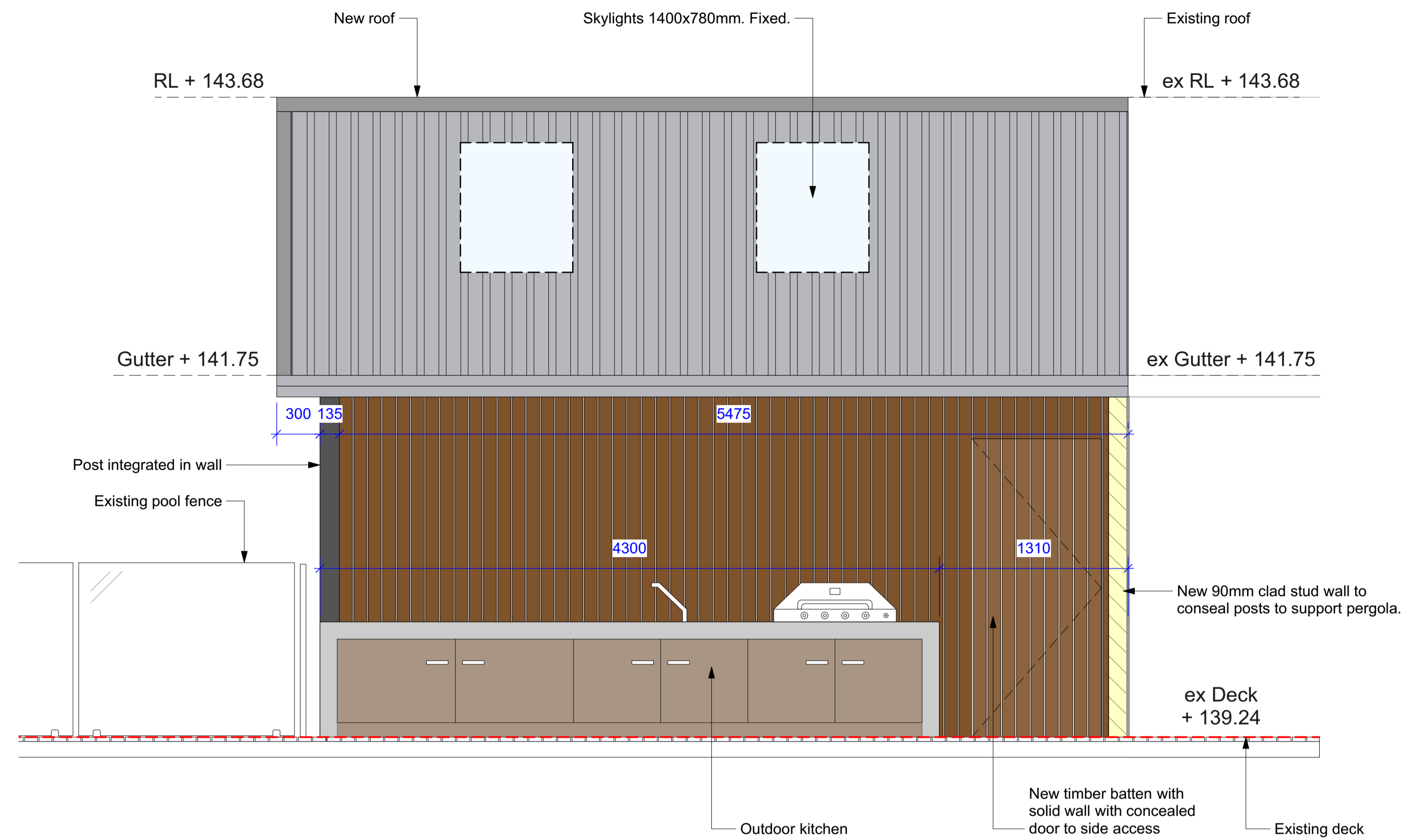
ISSUE	DATE	REVISION	PROJECT #
B	28/05/24	For DA.	24034
A	20/12/23	DRAFT issue for review.	
PROJECT			6 Bilga Avenue, Bilgola Plateau
CLIENT			Get Smart Landscaping
DWG	Roof Plan	DATE #	See above
CHKD	JK	SCALE @ A1	See Plan
		DRAWN	SA
		CHKD	JK
		DWG #	Sht-103
		REVISION	



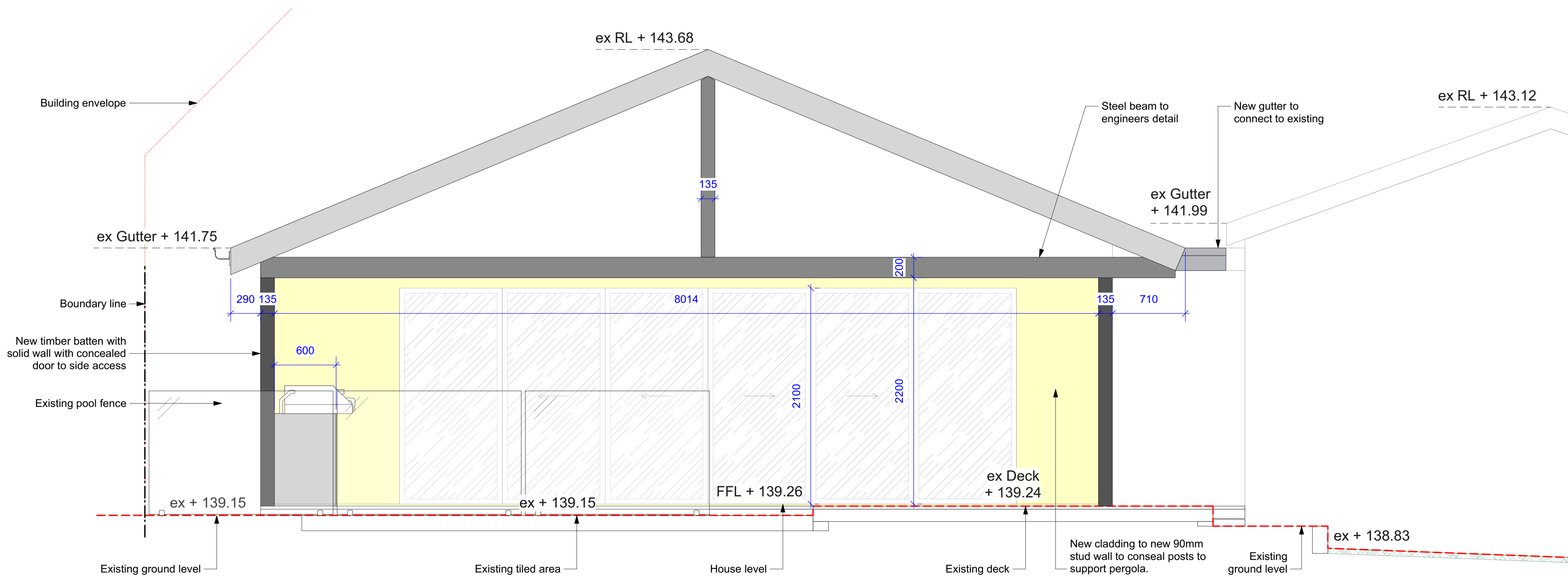
JAMIE KING
 LANDSCAPE ARCHITECT
 DESIGN ● APPROVE ● MANAGE



Elevation A
1:25@A1 1:50@A3. Do not scale off plan



Elevation B
1:25@A1 1:50@A3. Do not scale off plan



Elevation C
1:25@A1 1:50@A3. Do not scale off plan



THIS PLAN IS TO BE READ IN CONJUNCTION WITH THE CONDITIONS OF DEVELOPMENT CONSENT
 DA2024/0760

Notes:
 >Do not scale off plan.
 >Contractors to check all measurements onsite before quoting or commencing work.
 >If abnormalities arise, contact the Landscape Architect.
 >This design is copyright and is not to be reproduced in anyway without written consent of Jamie King Landscape Architect.

ISSUE	DATE	REVISION
B	28/05/24	For DA.
A	20/12/23	DRAFT issue for review.



JAMIE KING
 LANDSCAPE ARCHITECT
 DESIGN ● APPROVE ● MANAGE

PROJECT	6 Bilga Avenue, Bilgola Plateau	PROJECT #	24034
CLIENT	Get Smart Landscaping	DATE #	See above
DWG	Sections	SCALE @ A1	See Plan
CHKD	JK	DRAWN	SA
		REVISION	

Jamie King Landscape Architect
 22 Coonanga Road, Avalon, NSW, 2107 T: 0421 517 991
 W: www.jamieking.com.au E: jamie@jamieking.com.au