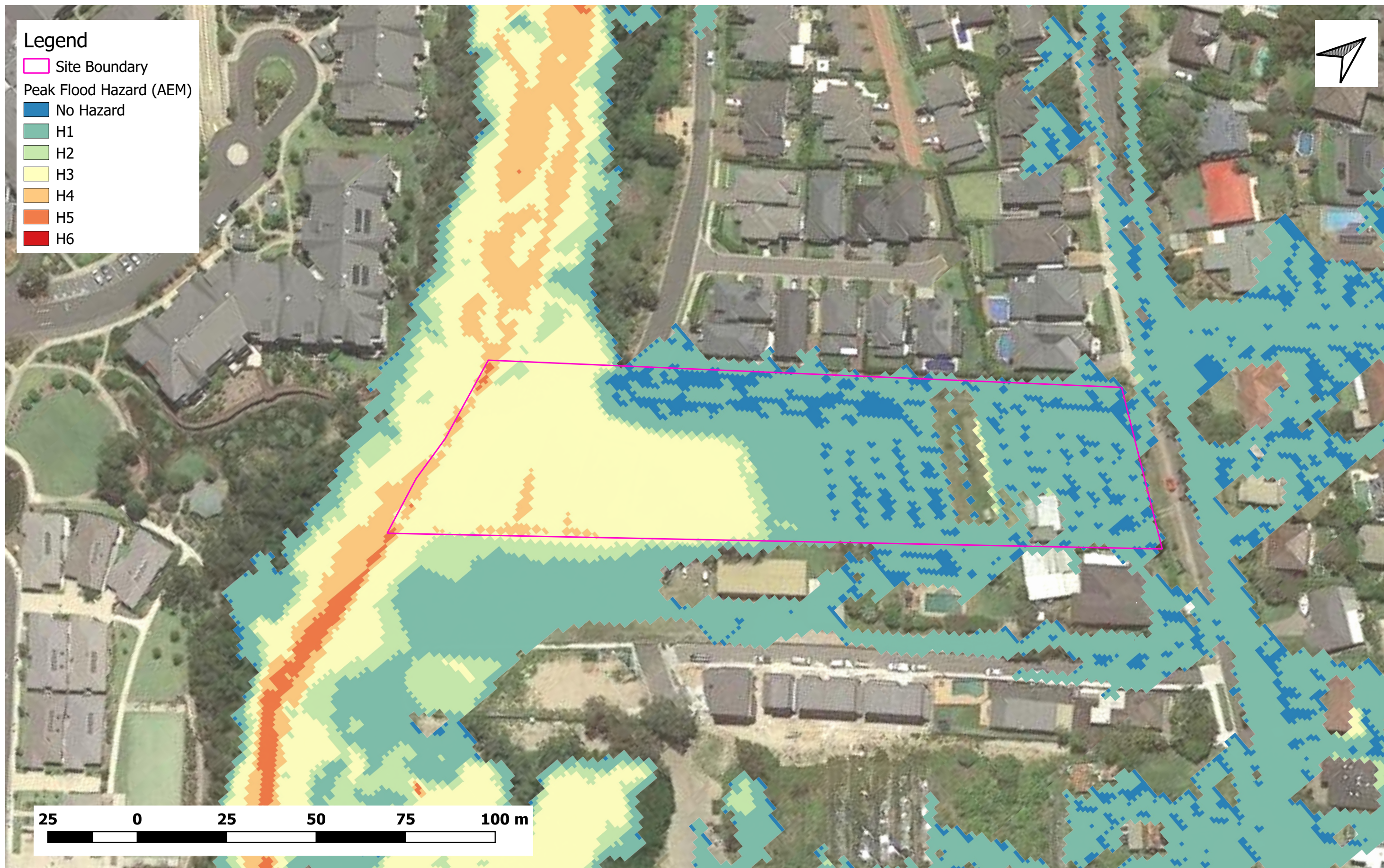


Storm endeavours to ensure that the information provided in this map is correct at the time of publication. Storm does not warrant, guarantee or make representations regarding the currency and accuracy of information contained within this map.

Title:

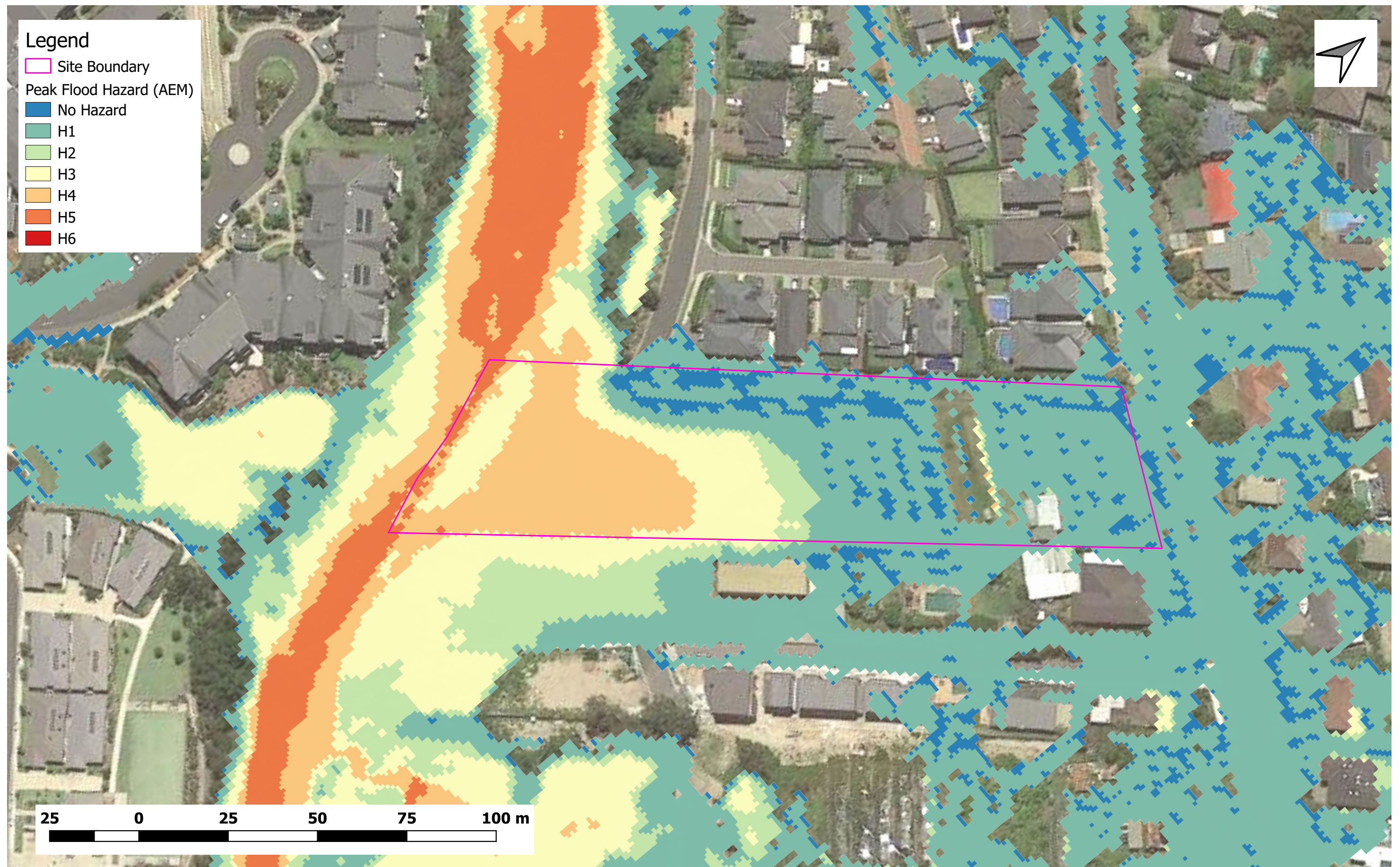
**Figure D1 - Existing Condition
Peak Flood Hazard (50% AEP)
53A Warriewood Road, Warriewood
Project Number: 434-20**



Storm endeavours to ensure that the information provided in this map is correct at the time of publication. Storm does not warrant, guarantee or make representations regarding the currency and accuracy of information contained within this map.

Title:

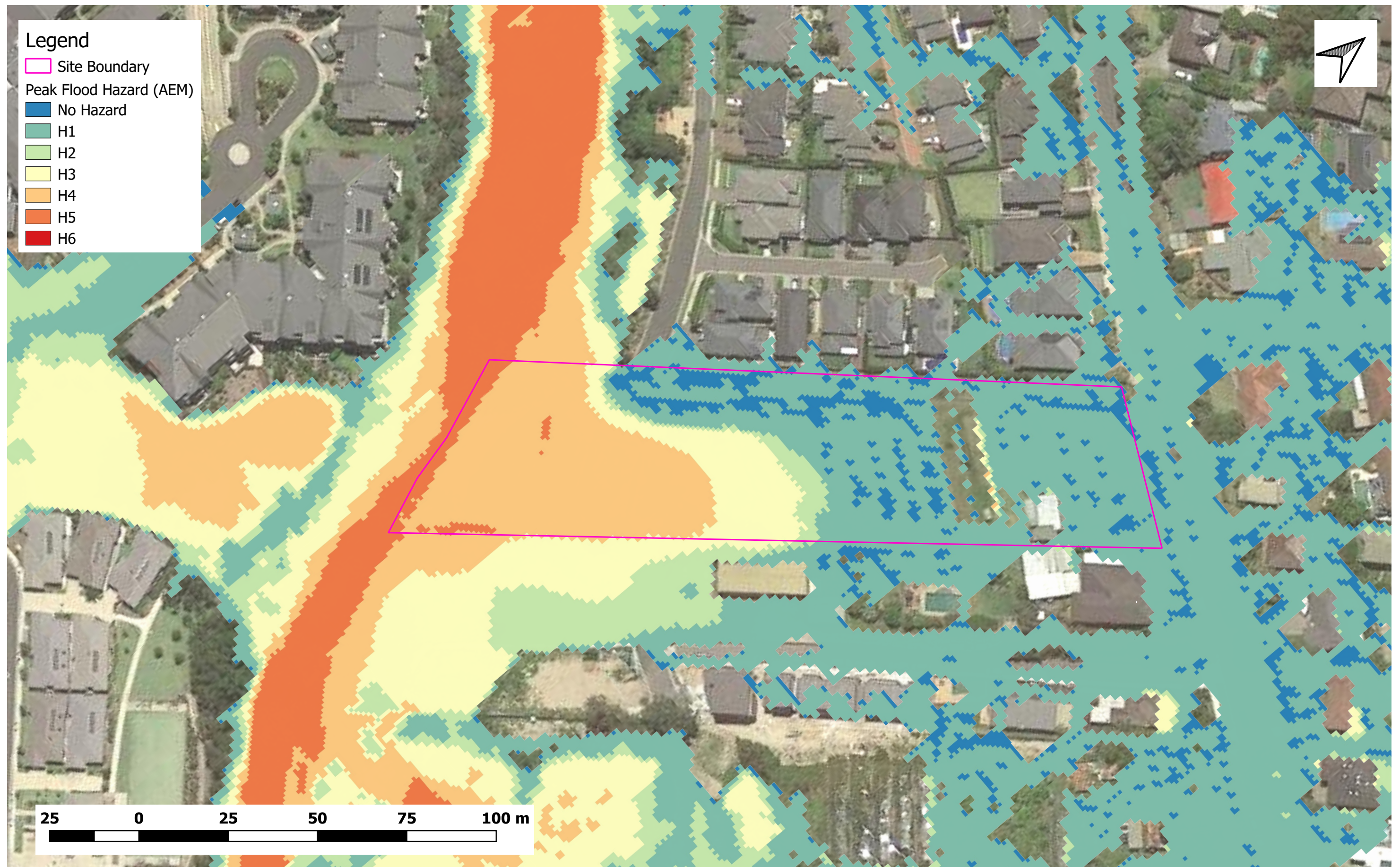
**Figure D2 - Existing Condition
Peak Flood Hazard (20% AEP)
53A Warriewood Road, Warriewood
Project Number: 434-20**



Storm endeavours to ensure that the information provided in this map is correct at the time of publication. Storm does not warrant, guarantee or make representations regarding the currency and accuracy of information contained within this map.

Title:

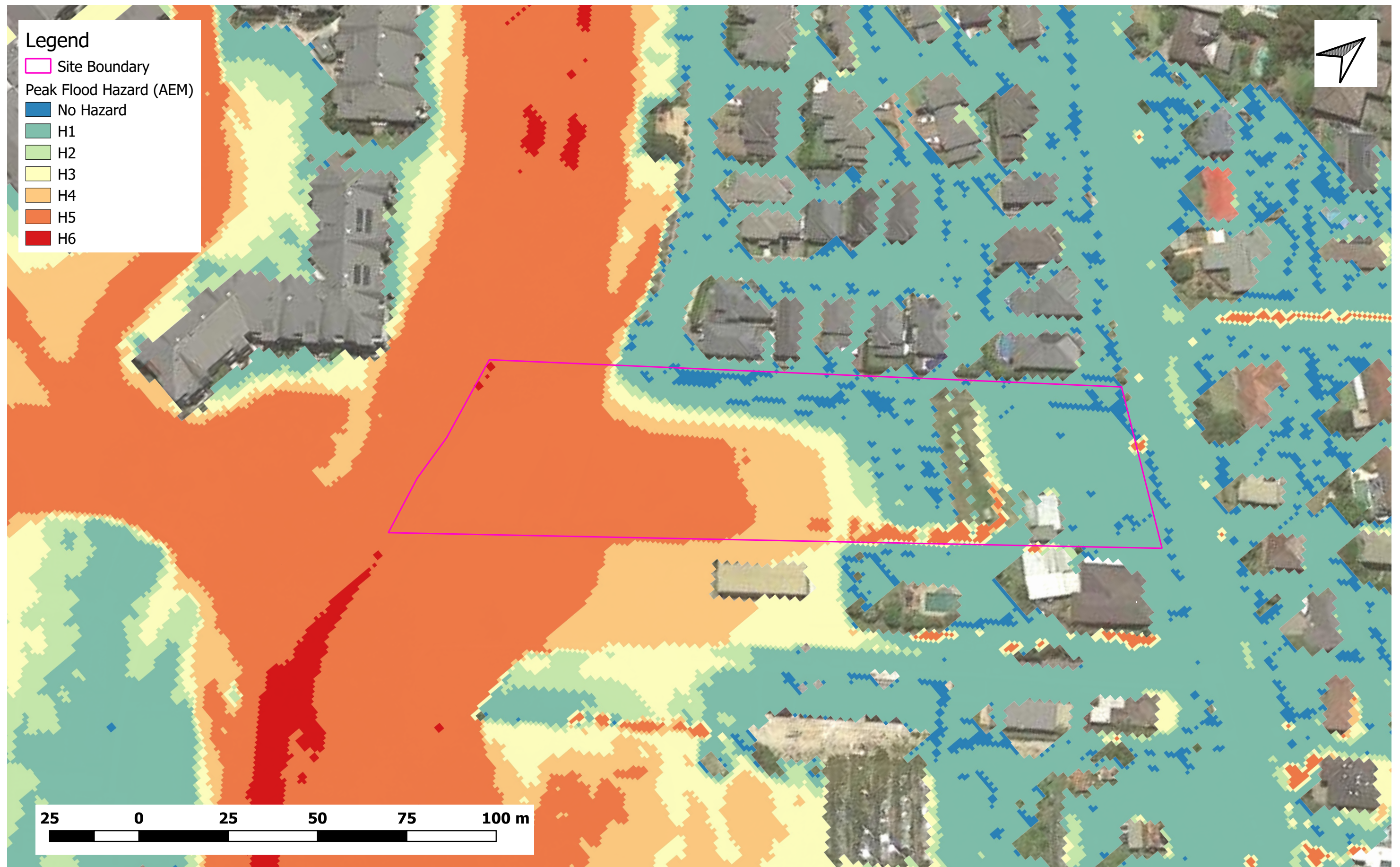
**Figure D3 - Existing Condition
Peak Flood Hazard (1% AEP)
53A Warriewood Road, Warriewood
Project Number: 434-20**



Storm endeavours to ensure that the information provided in this map is correct at the time of publication. Storm does not warrant, guarantee or make representations regarding the currency and accuracy of information contained within this map.

Title:

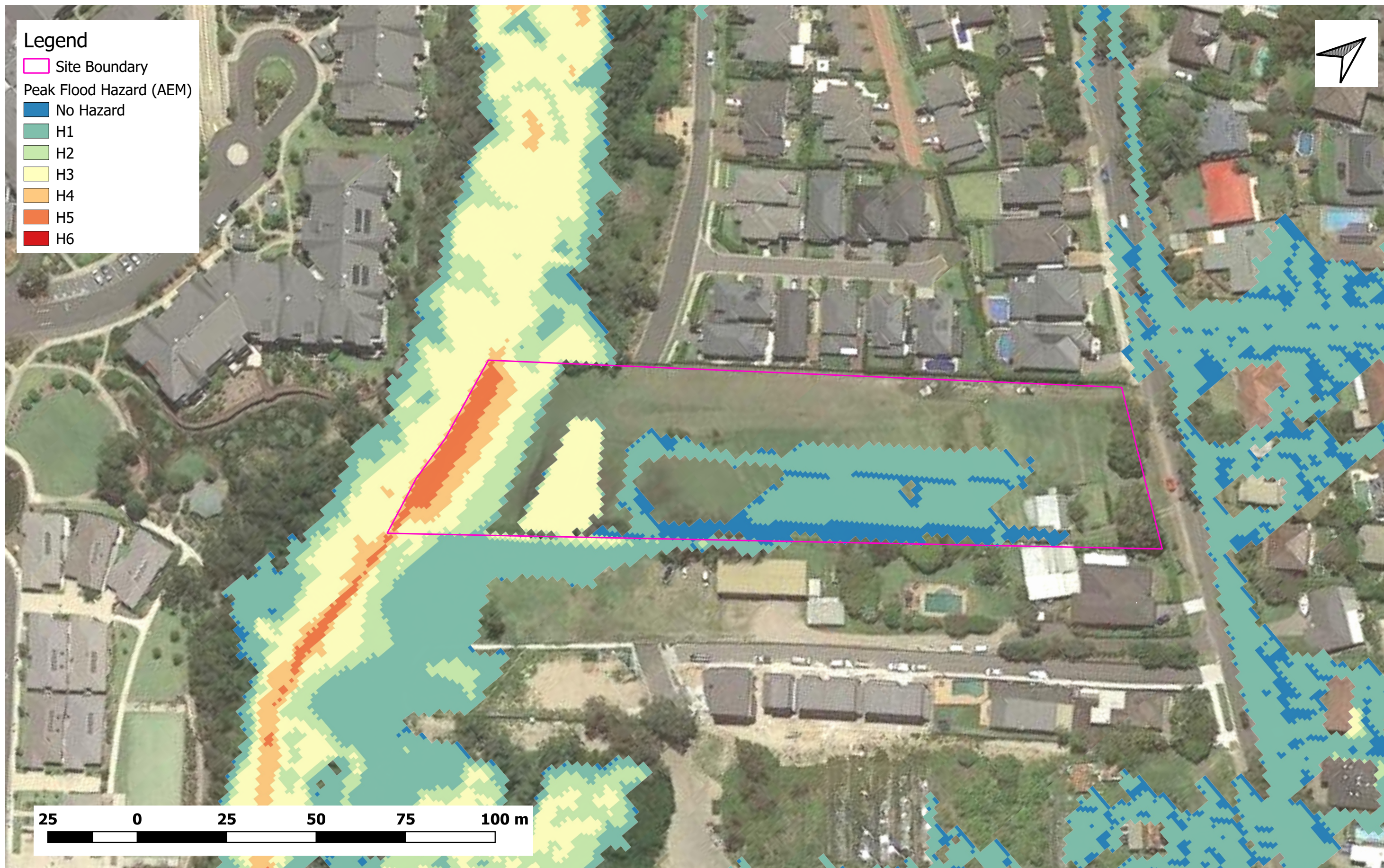
**Figure D4 - Existing Condition
Peak Flood Hazard (1% AEP with Climate Change)
53A Warriewood Road, Warriewood
Project Number: 434-20**



Storm endeavours to ensure that the information provided in this map is correct at the time of publication. Storm does not warrant, guarantee or make representations regarding the currency and accuracy of information contained within this map.

Title:

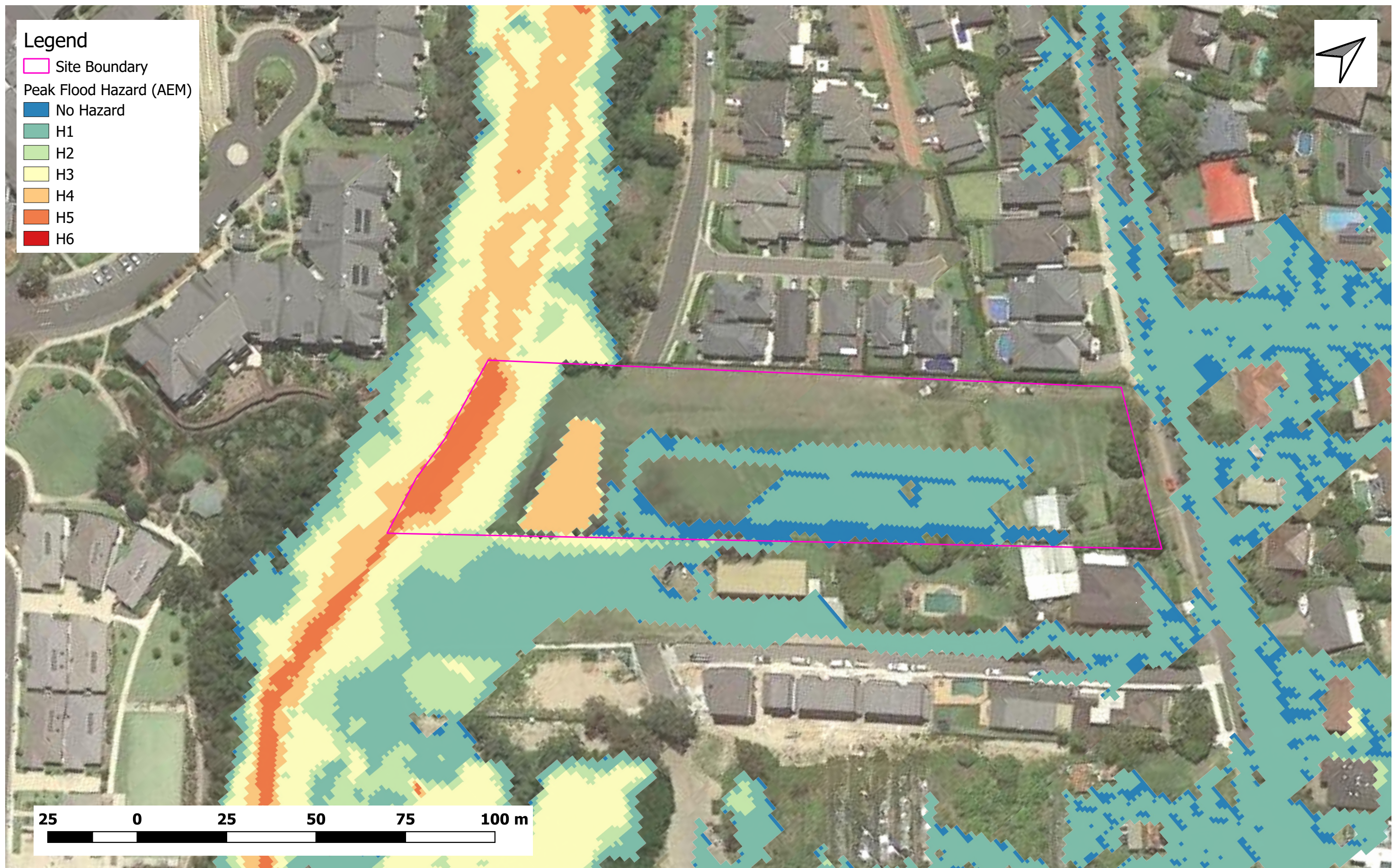
**Figure D5 - Existing Condition
Peak Flood Hazard (PMF)
53A Warriewood Road, Warriewood
Project Number: 434-20**



Storm endeavours to ensure that the information provided in this map is correct at the time of publication. Storm does not warrant, guarantee or make representations regarding the currency and accuracy of information contained within this map.

Title:

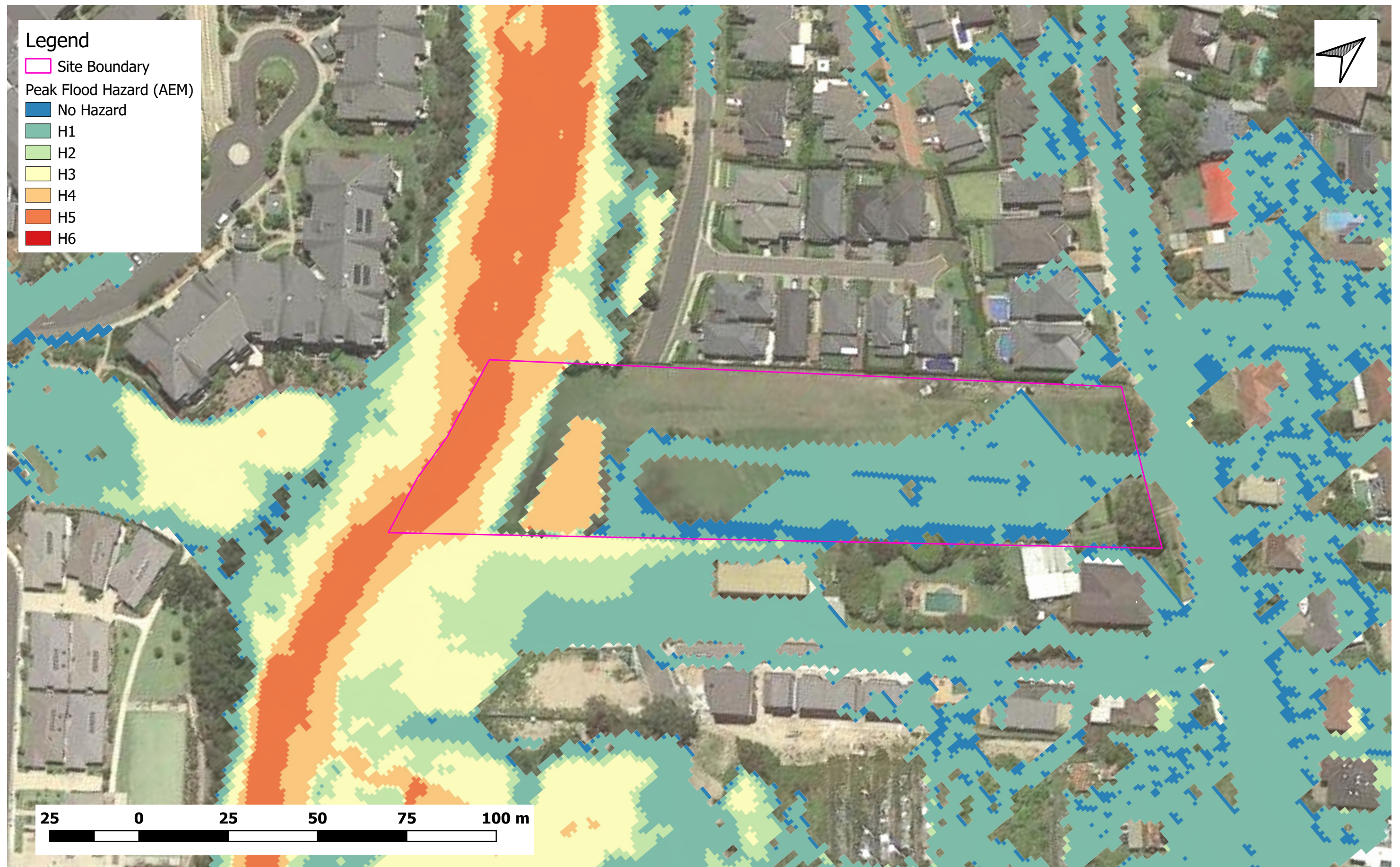
**Figure D6 - Proposed Condition
Peak Flood Hazard (50% AEP)
53A Warriewood Road, Warriewood
Project Number: 434-20**



Storm endeavours to ensure that the information provided in this map is correct at the time of publication. Storm does not warrant, guarantee or make representations regarding the currency and accuracy of information contained within this map.

Title:

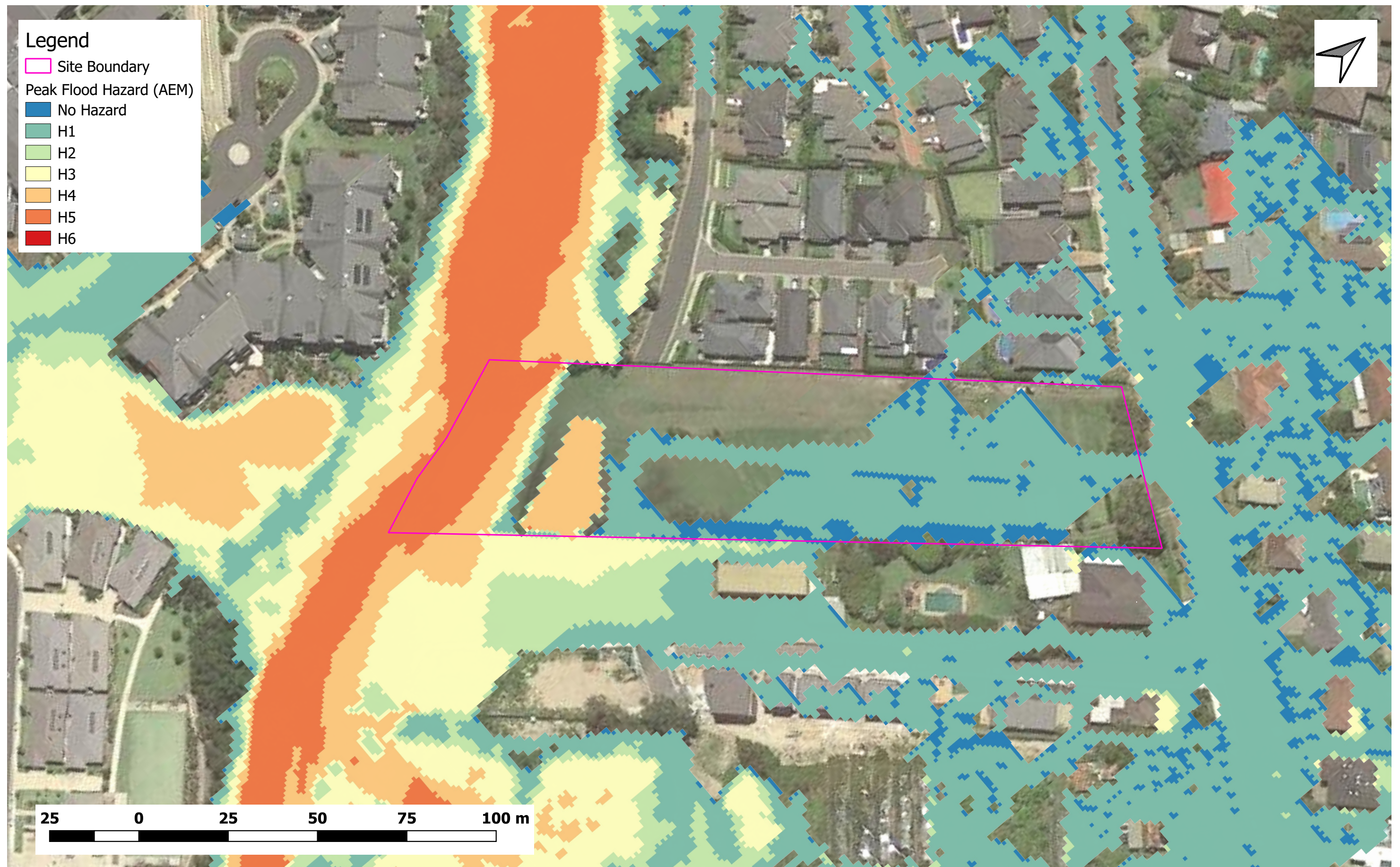
**Figure D7 - Proposed Condition
Peak Flood Hazard (20% AEP)
53A Warriewood Road, Warriewood
Project Number: 434-20**



Storm endeavours to ensure that the information provided in this map is correct at the time of publication. Storm does not warrant, guarantee or make representations regarding the currency and accuracy of information contained within this map.

Title:

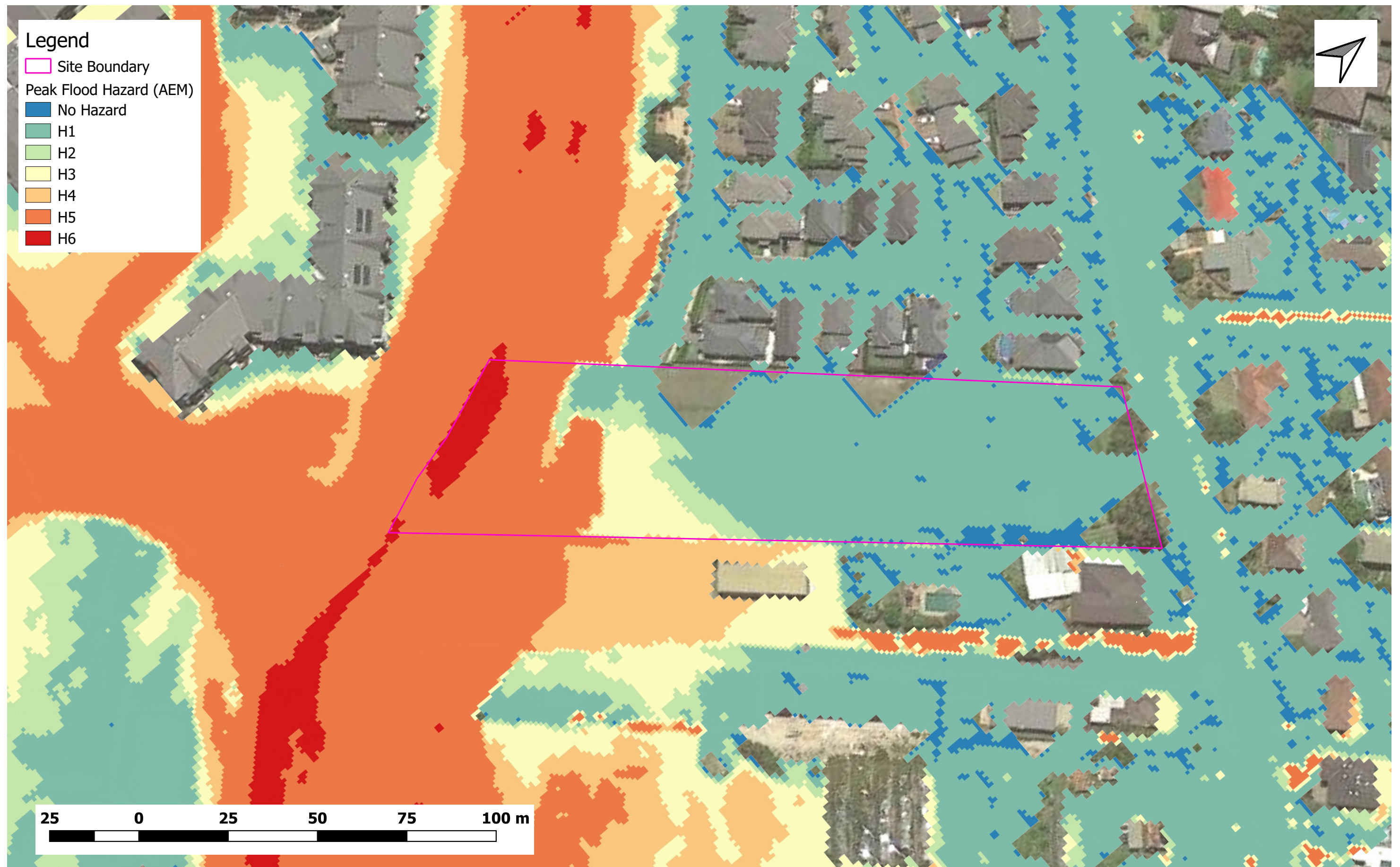
**Figure D8 - Proposed Condition
Peak Flood Hazard (1% AEP)
53A Warriewood Road, Warriewood
Project Number: 434-20**



Storm endeavours to ensure that the information provided in this map is correct at the time of publication. Storm does not warrant, guarantee or make representations regarding the currency and accuracy of information contained within this map.

Title:

**Figure D9 - Proposed Condition
Peak Flood Hazard (1% AEP with Climate Change)
53A Warriewood Road, Warriewood
Project Number: 434-20**



Storm endeavours to ensure that the information provided in this map is correct at the time of publication. Storm does not warrant, guarantee or make representations regarding the currency and accuracy of information contained within this map.

Title:

**Figure D10 - Proposed Condition
Peak Flood Hazard (PMF)
Project Number: 434-20**