

elizabeth leong architects pty ltd
architecture + interior design

ABN 59 100 247 649 NSW Architects Registration Board
Nominated Architect Elizabeth Leong Reg No 6004.
30 Essex Street Killara NSW 2071
M 0407055223
eleong@elarchitects.com.au

C elizabeth leong architects pty ltd 2021

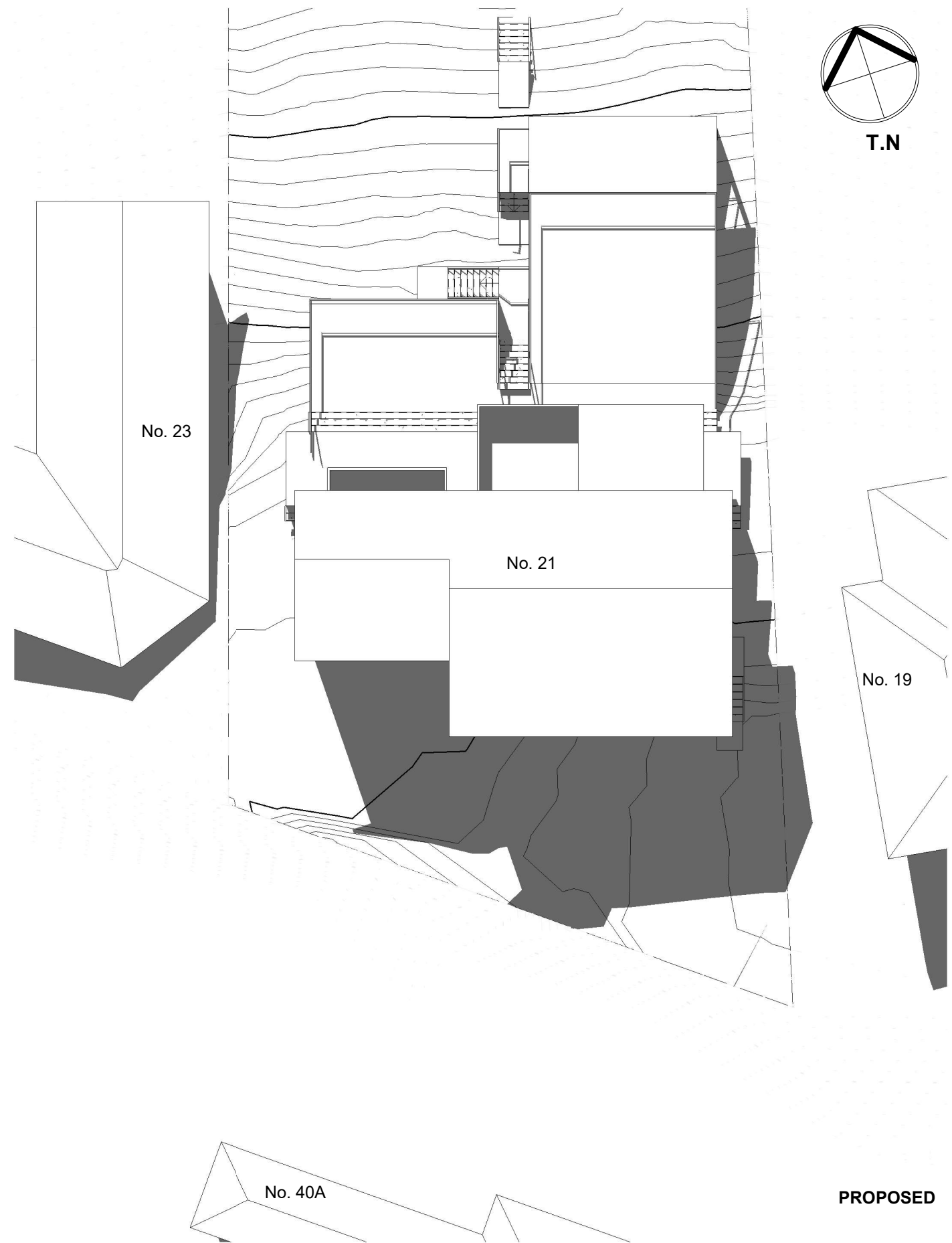
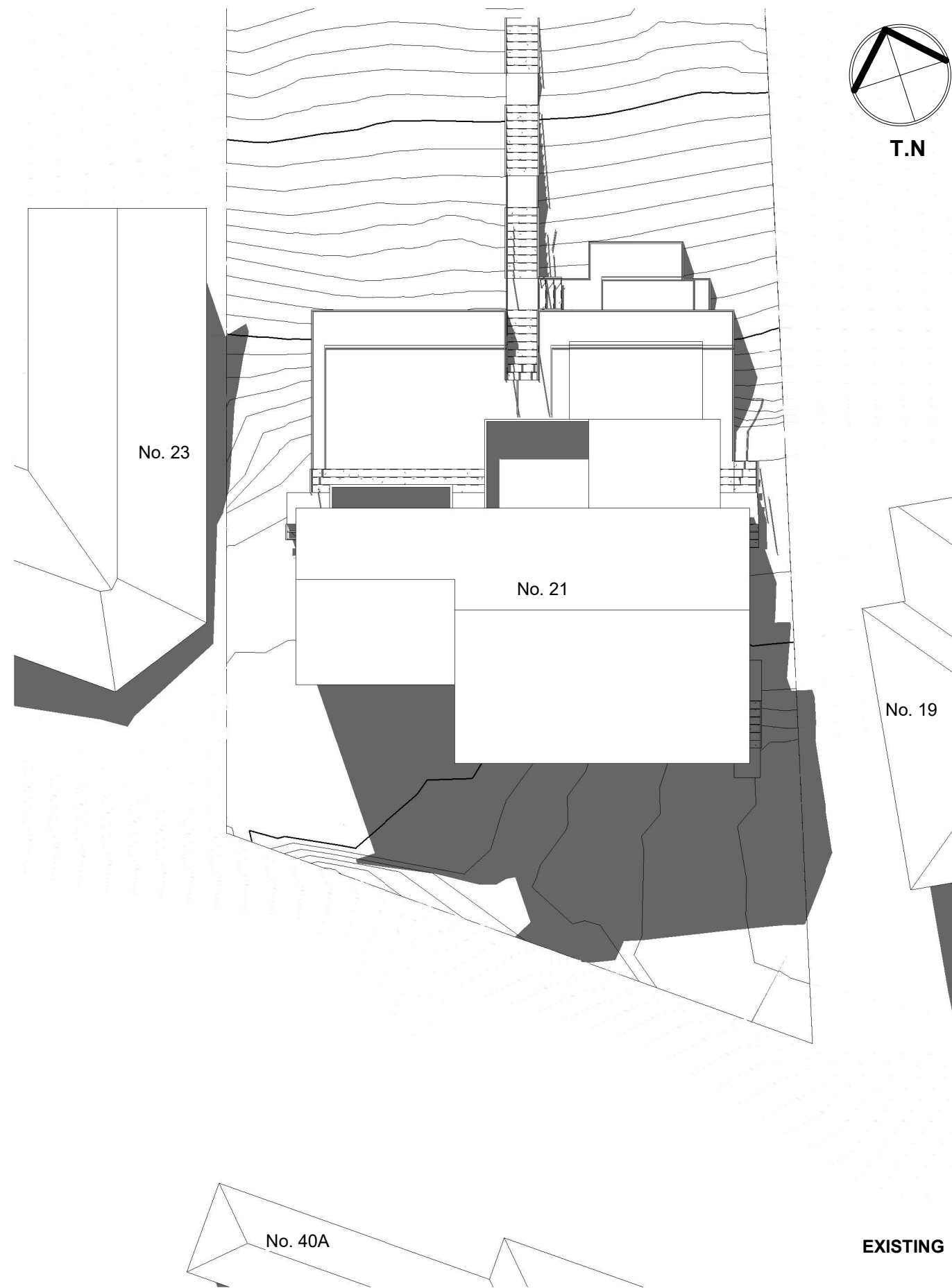
The design, drawings, specifications and the copyright are the property of elizabeth leong architects pty ltd. The documents must not be transmitted, wholly or partly, without prior approval of elizabeth leong architects pty ltd.

All dimensions must be verified on site prior to the commencement of work. Do not scale this drawing. Figure dimensions are to be taken in preference to the scale drawing.

1m 4m 8m
0m 2m 6m 10m

Notes:
1.0 Refer to the Site Plan DA2000 (current revision) for relevant notes.
2.0 The Shadows cast by fences and trees have not been indicated.

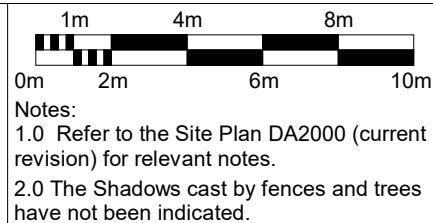
ISSUE DETAILS		applicant: CHRISTINE BARNABAS	project 16/083
B ISSUE FOR DA APPROVAL	15.03.21	21 Yachtsmans Paradise Newport Lot 17 DP 233779 Shadow Diagrams - 21 June 9am date Mar 2021 scale 1 : 200 dwg no DA5000 revC	
C STEPS AMENDED	16.06.21		



elizabeth leong architects pty ltd
architecture + interior design

ABN 59 100 247 649 NSW Architects Registration Board
Nominated Architect Elizabeth Leong Reg No 6004.
30 Essex Street Killara NSW 2071
M 0407055223
eleong@elarchitects.com.au

C elizabeth leong architects pty ltd 2021
The design, drawings, specifications and the copyright are the property of elizabeth leong architects pty ltd. The documents must not be transmitted, wholly or partly, without prior approval of elizabeth leong architects pty ltd.
All dimensions must be verified on site prior to the commencement of work. Do not scale this drawing. Figure dimensions are to be taken in preference to the scale drawing.



ISSUE DETAILS

B ISSUE FOR DA APPROVAL 15.03.21
C STEPS AMENDED 16.06.21

applicant: CHRISTINE BARNABAS

project 16/083

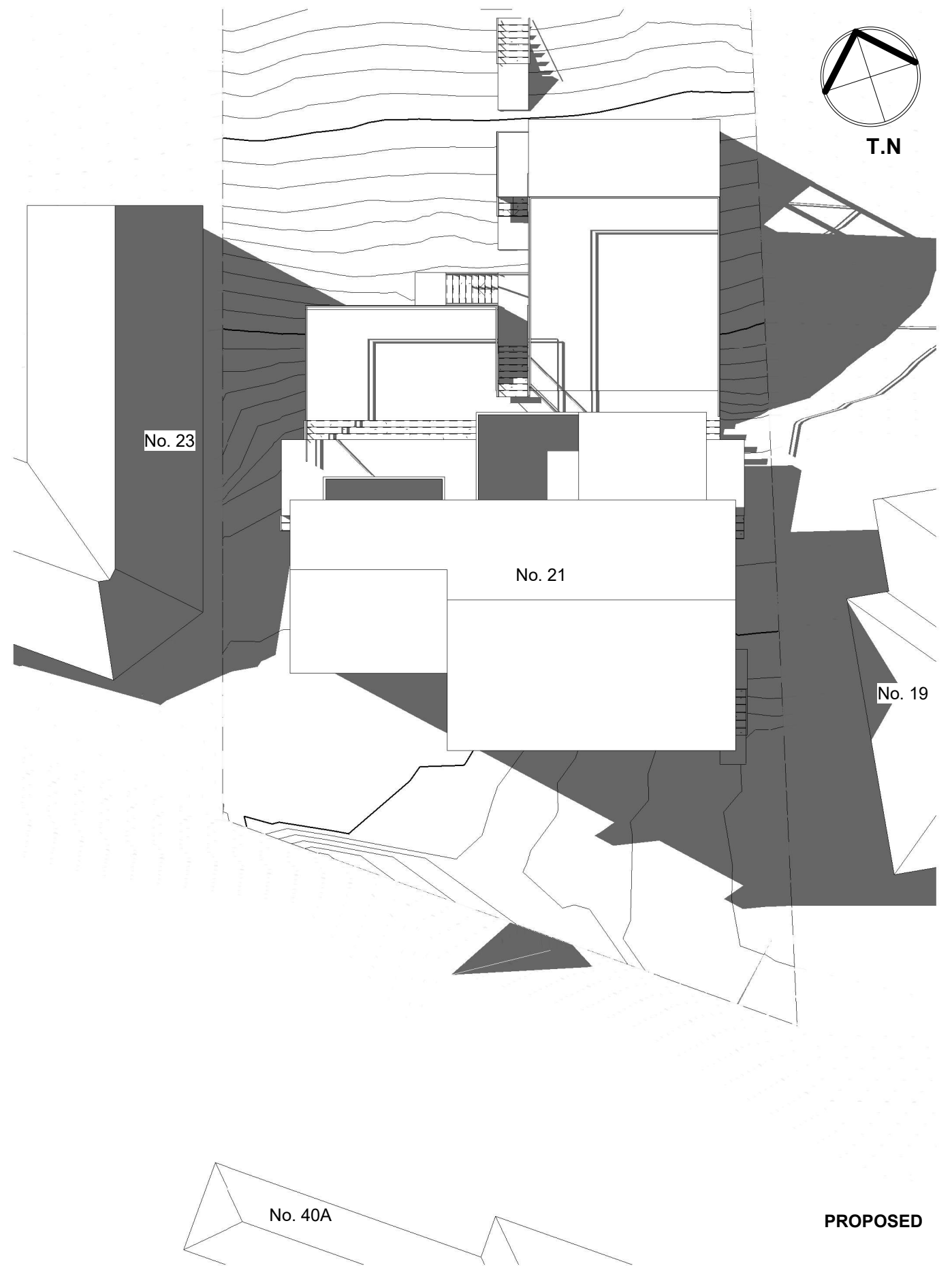
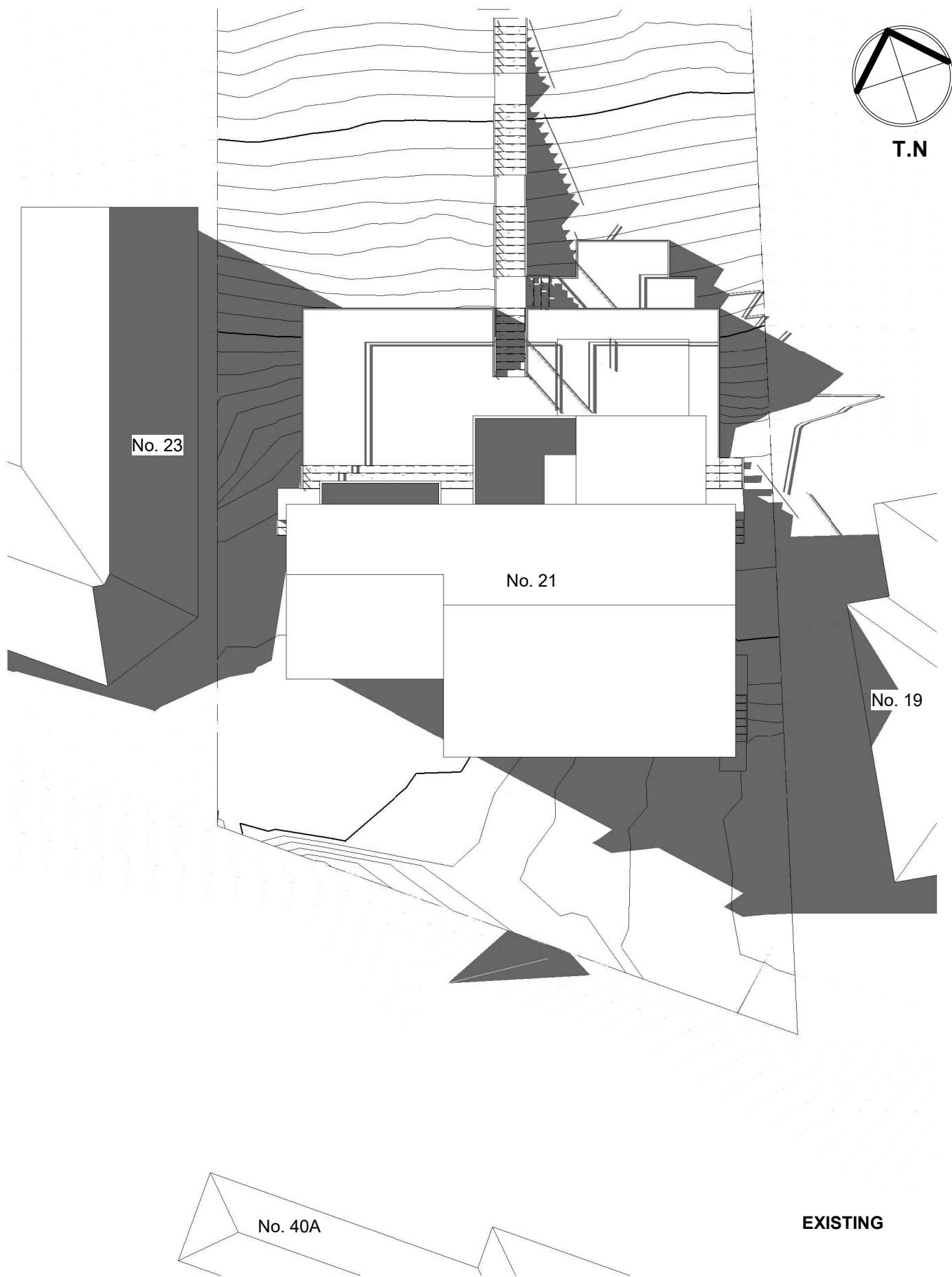
21 Yachtsmans Paradise Newport
Lot 17 DP 233779

Shadow Diagrams - 21 June 12pm

date Mar 2021

scale 1 : 200

dwg no DA5001 revC



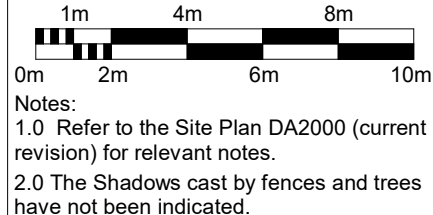
elizabeth leong architects pty ltd
architecture + interior design

ABN 59 100 247 649 NSW Architects Registration Board
Nominated Architect Elizabeth Leong Reg No 6004.
30 Essex Street Killara NSW 2071
M 0407055223
eleong@elarchitects.com.au

C elizabeth leong architects pty ltd 2021

The design, drawings, specifications and the copyright are the property of elizabeth leong architects pty ltd. The documents must not be transmitted, wholly or partly, without prior approval of elizabeth leong architects pty ltd.

All dimensions must be verified on site prior to the commencement of work. Do not scale this drawing. Figure dimensions are to be taken in preference to the scale drawing.



Notes:
1.0 Refer to the Site Plan DA2000 (current revision) for relevant notes.
2.0 The Shadows cast by fences and trees have not been indicated.

ISSUE DETAILS		applicant: CHRISTINE BARNABAS	project 16/083
B ISSUE FOR DA APPROVAL	15.03.21	21 Yachtsmans Paradise Newport Lot 17 DP 233779 Shadow Diagrams - 21 June 3pm date Mar 2021 scale 1 : 200 dwg no DA5002 revC	
C STEPS AMENDED	16.06.21		