

1 Site Plan (Roof) Notification
1:1000

- COMPLY WITH RELEVANT AUTHORITIES REQUIREMENTS
- COMPLY WITH THE BUILDING CODE OF AUSTRALIA
- COMPLY WITH ALL RELEVANT AUSTRALIAN STANDARDS
- DIMENSIONS IN MILLIMETRES
- USE FIGURES DIMENSIONS ONLY
- DO NOT SCALE
- IF DISCREPANCY EXISTS NOTIFY ARCHITECT
- COS - CONFIRM ON SITE
- IF IN DOUBT ASK

LEGEND

AD	ALUMINIUM DOOR	FG	FIXED GLASS	RWO	RAINWATER OUTLET
AW	ALUMINIUM WINDOW	FR	FRIDGE	SC	STEEL COLUMN
BG	BOX GUTTER	FW	FLOOR WASTE	TD	TIMBER DOOR JOINERY
BK	BRICK	GBS	GLAZED BRICK	TW	TIMBER WINDOW JOINERY
BT	STEEL BALUSTRADE	JU	GLAZED BRICK SCREEN		
BW	BLOCKWORK	LO	JOINERY UNIT		
EX-FL	EXISTING FLOORING	MAT	EXTERNAL LOUVRES - RETRACTABLE		
CONC	CONCRETE	MC	ENTRY MAT		
CPT	CARPET	MR	METAL CLADDING		
CT	CERAMIC TILE	PM	METAL ROOFING		
DP	DOWNSPIPE	RF	PERFORATED METAL		
EXT	EXISTING		RUBBER FLOORING		

LEGEND

	EXISTING ELEMENTS TO BE RETAINED
	EXISTING ELEMENTS TO BE DEMOLISHED
	PROPOSED NEW WORKS

CAD File: 1801_PITT_STAGE 01

ISSUE	DATE	REVISION
01	31/10/19	DA Issue
02	11/5/20	DA Revision

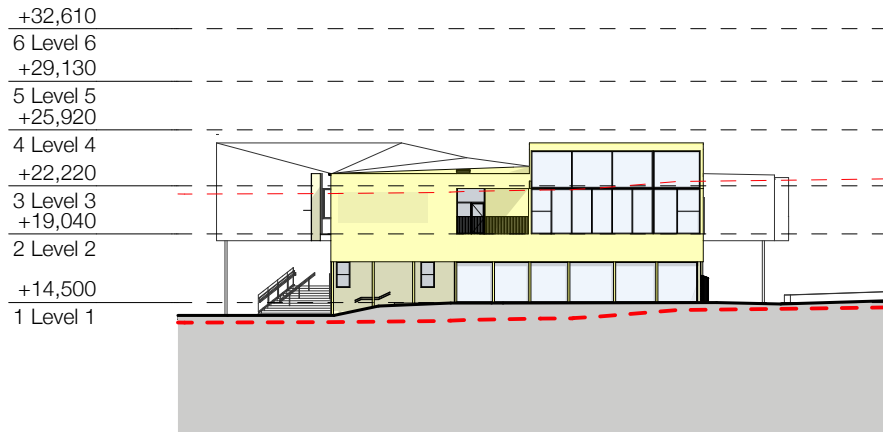
DRAWN BY KH CHECKED BY KH
IF ISSUE IS INITIALED AS CHECKED DRAWING CAN BE CONSIDERED APPROVED UNDER NMA QUALITY MANAGEMENT SYSTEM

The Pittwater House Schools
70 South Creek Rd, Collaroy NSW 2097
FOR The Pittwater House Schools

NEESON MURCUTT ARCHITECTS PTY LTD
L2 9 ROSLYN ST. POTTS POINT 2011 T. 8297 3590 F. 8297 3510
NOMINATED ARCHITECT: RACHEL NEESON No. 6692

NO	REV	TITLE	PHASE	SCALE	DATE
DA 12.1	02	NOTIFICATION PLAN	DA	1:1000 @A3	11/5/20

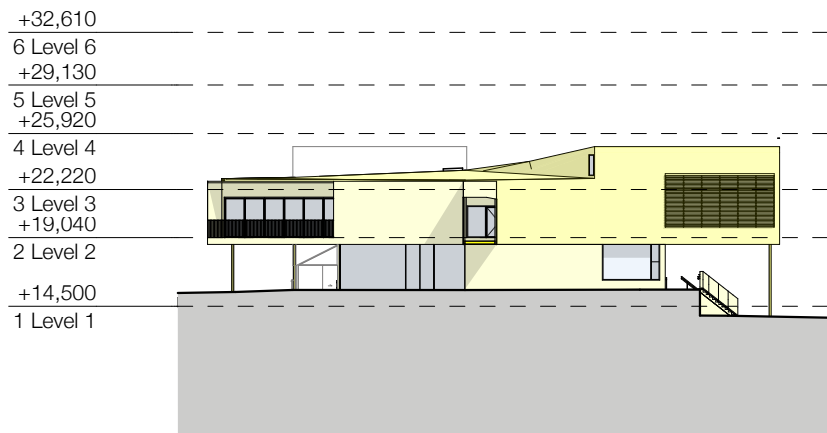
Copyright in all documents and drawings prepared by NEESON MURCUTT ARCHITECTS and in any works executed from those documents and drawings shall remain the property of, or on creation vest in NEESON MURCUTT ARCHITECTS, Pty Ltd ©



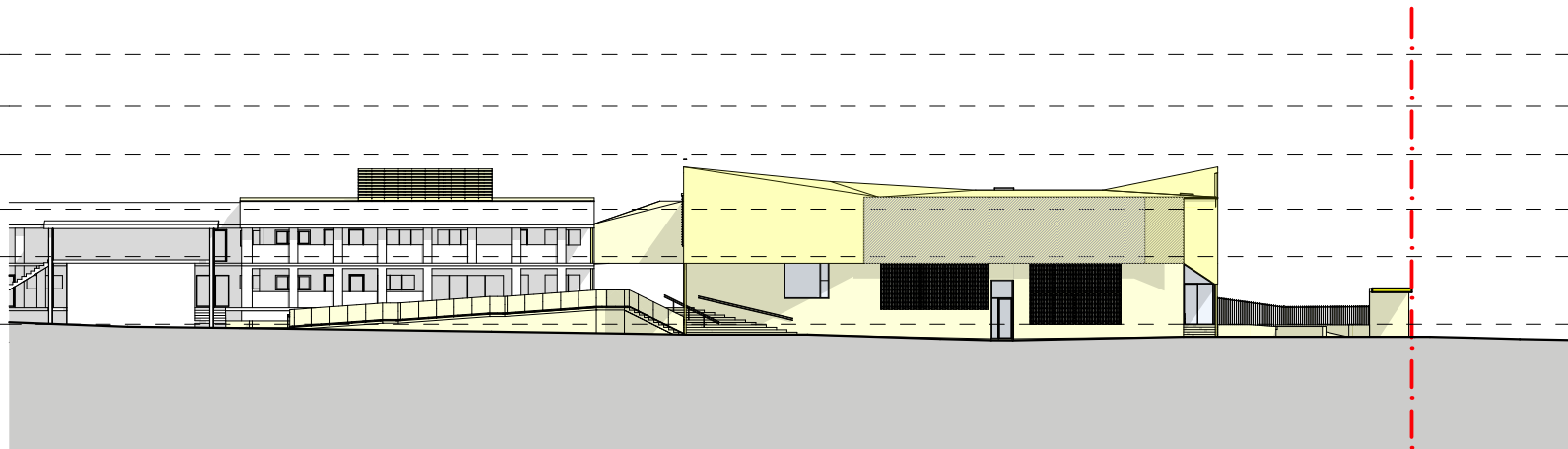
3 South Notification
1:500



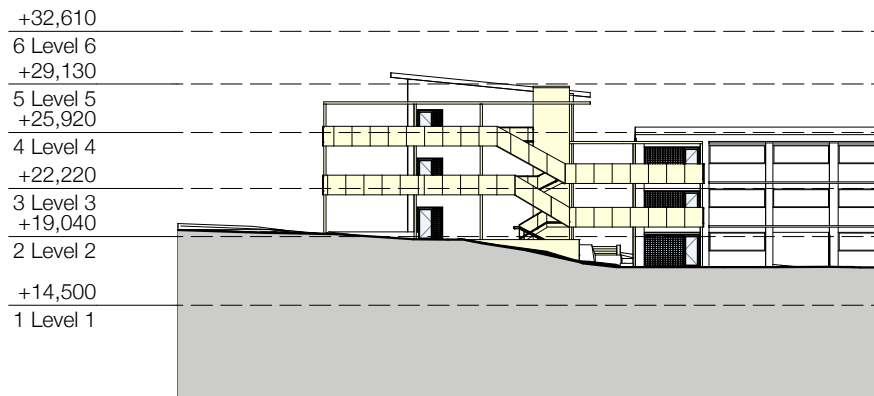
2 East Notification
1:500



1 North Notification
1:500



4 West Notification
1:500



5 Section 3 Notification
1:500

- COMPLY WITH RELEVANT AUTHORITIES REQUIREMENTS
- COMPLY WITH THE BUILDING CODE OF AUSTRALIA
- COMPLY WITH ALL RELEVANT AUSTRALIAN STANDARDS
- DIMENSIONS IN MILLIMETRES
- USE FIGURES DIMENSIONS ONLY
- DO NOT SCALE
- IF DISCREPANCY EXISTS NOTIFY ARCHITECT
- COS - CONFIRM ON SITE
- IF IN DOUBT ASK

LEGEND

AD ALUMINIUM DOOR
AW ALUMINIUM WINDOW
BG BOX GUTTER
BK BRICK
BT STEEL BALUSTRADE
BW BLOCKWORK
EX-FL EXISTING FLOORING
CONC CONCRETE
CPT CARPET
CT CERAMIC TILE
DP DOWNPIPE
EXT EXISTING

FG FIXED GLASS
FR FRIDGE
FW FLOOR WASTE
GBK GLAZED BRICK
JUI JOINERY UNIT
LO EXTERNAL LOUVRES - RETRACTABLE
MAT ENTRY MAT
MC METAL CLADDING
MR METAL ROOFING
PM PERFORATED METAL
RF RUBBER FLOORING

RWO RAINWATER OUTLET
SC STEEL COLUMN
TD TIMBER DOOR JOINERY
TW TIMBER WINDOW JOINERY

LEGEND

EXISTING ELEMENTS TO BE RETAINED
EXISTING ELEMENTS TO BE DEMOLISHED
PROPOSED NEW WORKS

CAD File: 1801_PITT_STAGE 01

ISSUE	DATE	REVISION
01	31/10/19	DA Issue

DRAWN BY KH CHECKED BY KH
IF ISSUE IS INITIALED AS CHECKED DRAWING CAN BE CONSIDERED APPROVED UNDER NMA QUALITY MANAGEMENT SYSTEM

The Pittwater House Schools
70 South Creek Rd, Collaroy NSW 2097
FOR The Pittwater House Schools

NEESON MURCUTT ARCHITECTS PTY LTD
L2 9 ROSLYN ST. POTTS POINT 2011 T. 8297 3590 F. 8297 3510
NOMINATED ARCHITECT: RACHEL NEESON No. 6692

NO	REV	TITLE	PHASE	SCALE	DATE
DA 12.2	01	NOTIFICATION PLAN	DA	1:500 @A3	11/5/20

Copyright in all documents and drawings prepared by NEESON MURCUTT ARCHITECTS and in any works executed from those documents and drawings shall remain the property of, or on creation vest in NEESON MURCUTT ARCHITECTS, Pty Ltd ©