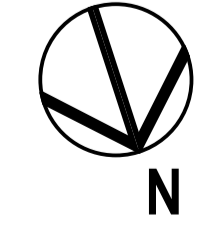
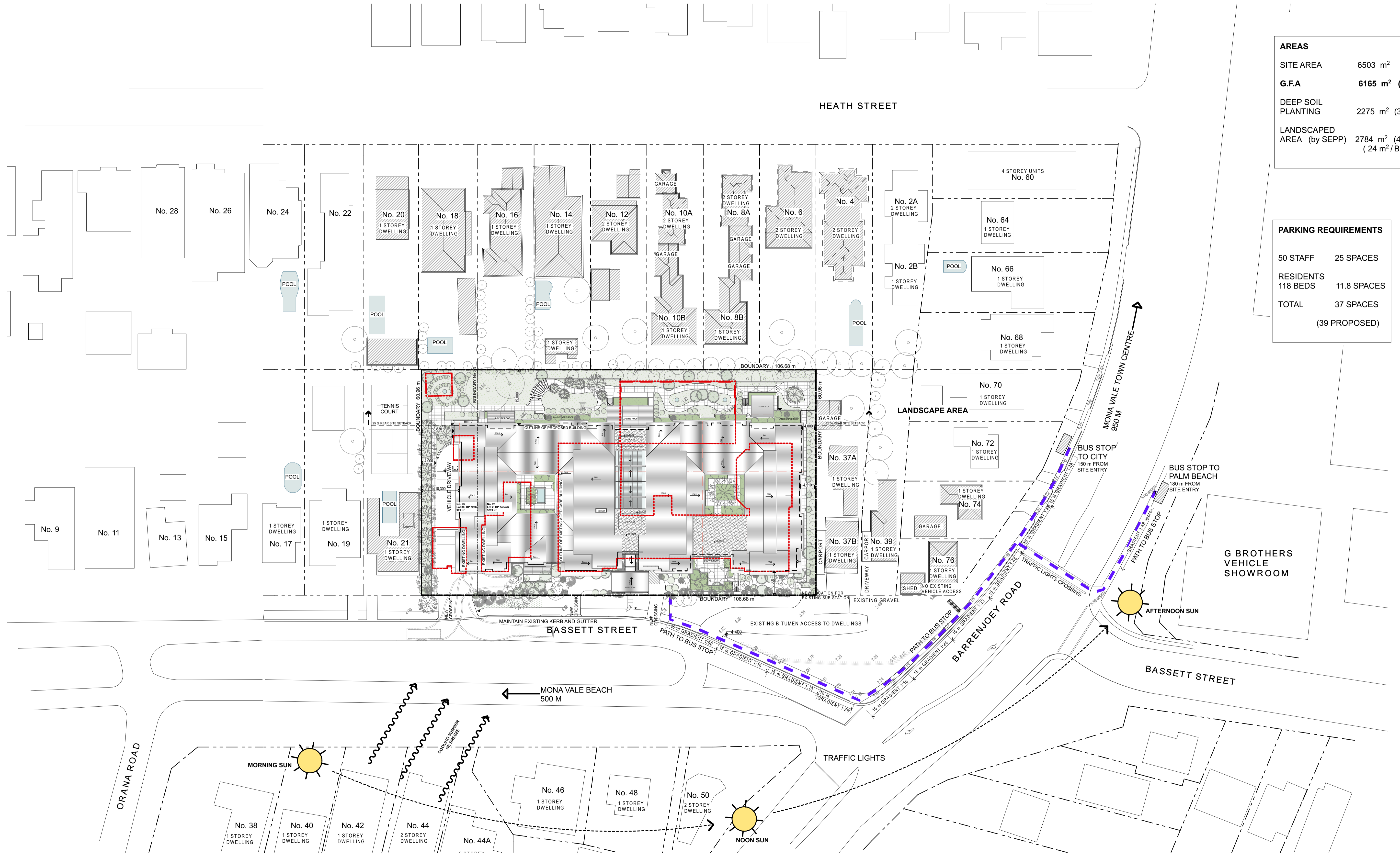
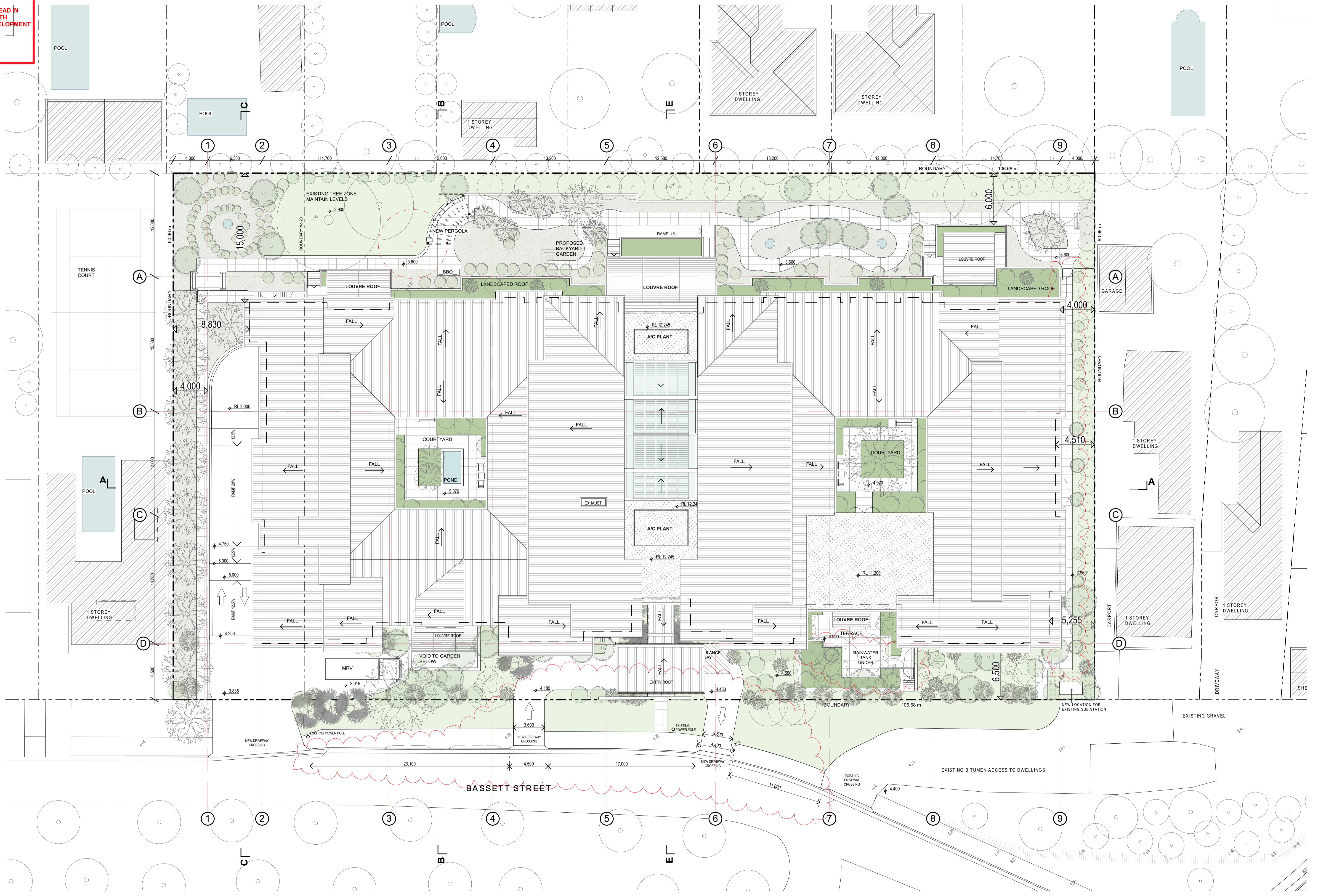


AREAS	
SITE AREA	6503 m ²
G.F.A	6165 m ² (0.95:1)
DEEP SOIL PLANTING	2275 m ² (35%)
LANDSCAPED AREA (by SEPP)	2784 m ² (43%) (24 m ² /BED)

PARKING REQUIREMENTS	
50 STAFF	25 SPACES
RESIDENTS	118 BEDS
TOTAL	37 SPACES (39 PROPOSED)



THIS PLAN IS TO BE READ IN CONJUNCTION WITH THE CONDITIONS OF DEVELOPMENT CONSENT DA2020/0816



GARTNERTROVATO
ARCHITECTS

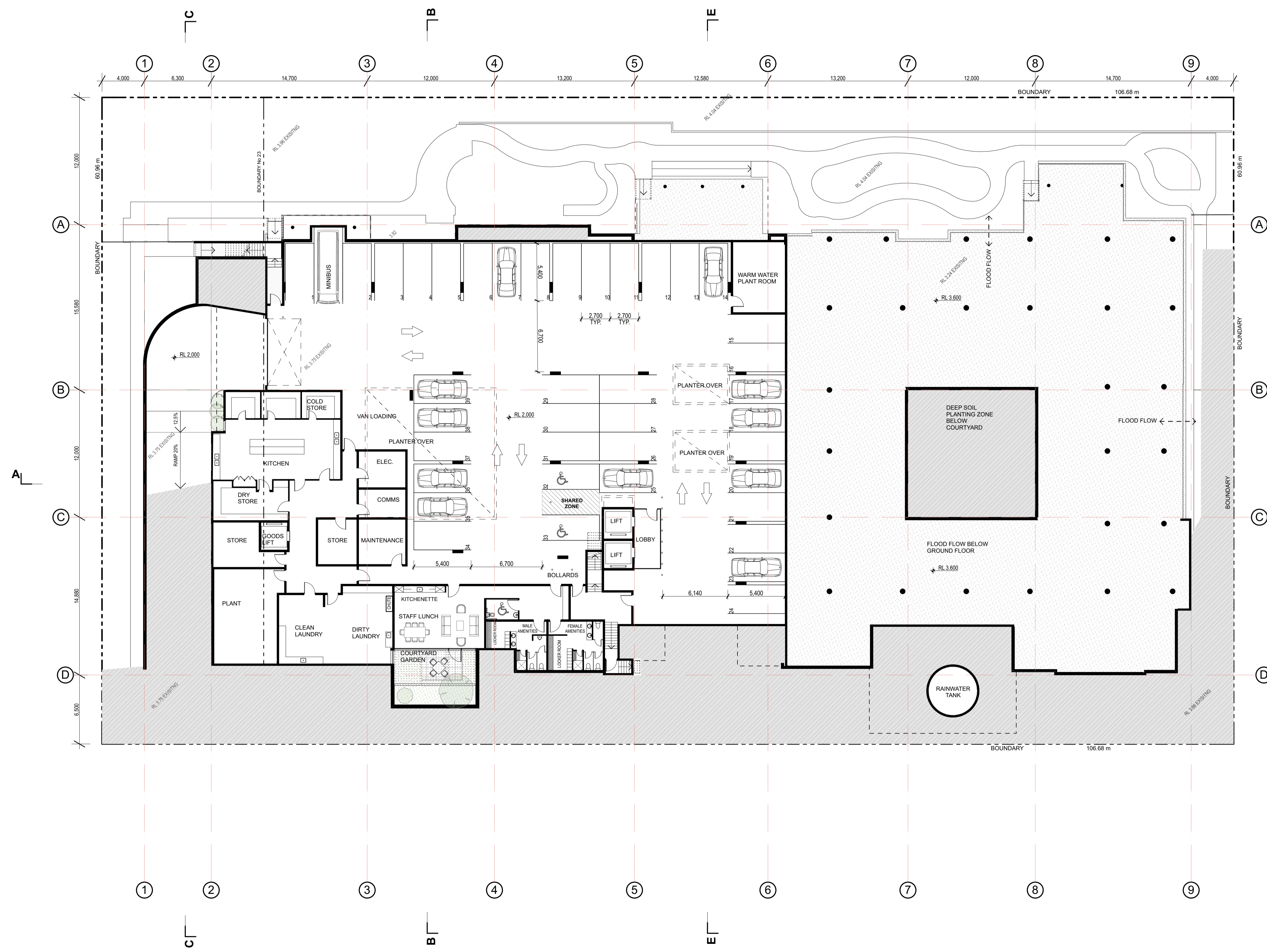
A 47790 DRINK WATER RESERVOIR
B 47790 DRINK WATER RESERVOIR
C 47790 DRINK WATER RESERVOIR
D 47790 DRINK WATER RESERVOIR
E 47790 DRINK WATER RESERVOIR

THOMPSON HEALTH CARE
PROPOSED AGED CARE FACILITY

23 + 33 BASSETT STREET,
MONA VALE NSW
LOTS 38 DP 7236 + 2 DP 748426
FOR THOMPSON HEALTH CARE

SCALE: 1:200 @ A1
PROJECT NO: 1816
DRAWN BY: DH
DATE: 17/11/20
REVISION: B

DATE: 17/11/20
REVISION: B

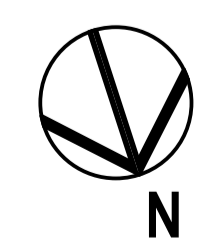


AREAS

SITE AREA	6503 m ²
G.F.A	6165 m ² (0.95:1)
DEEP SOIL PLANTING	2275 m ² (35%)
LANDSCAPED AREA (by SEPP)	2784 m ² (43%) (24 m ² / BED)

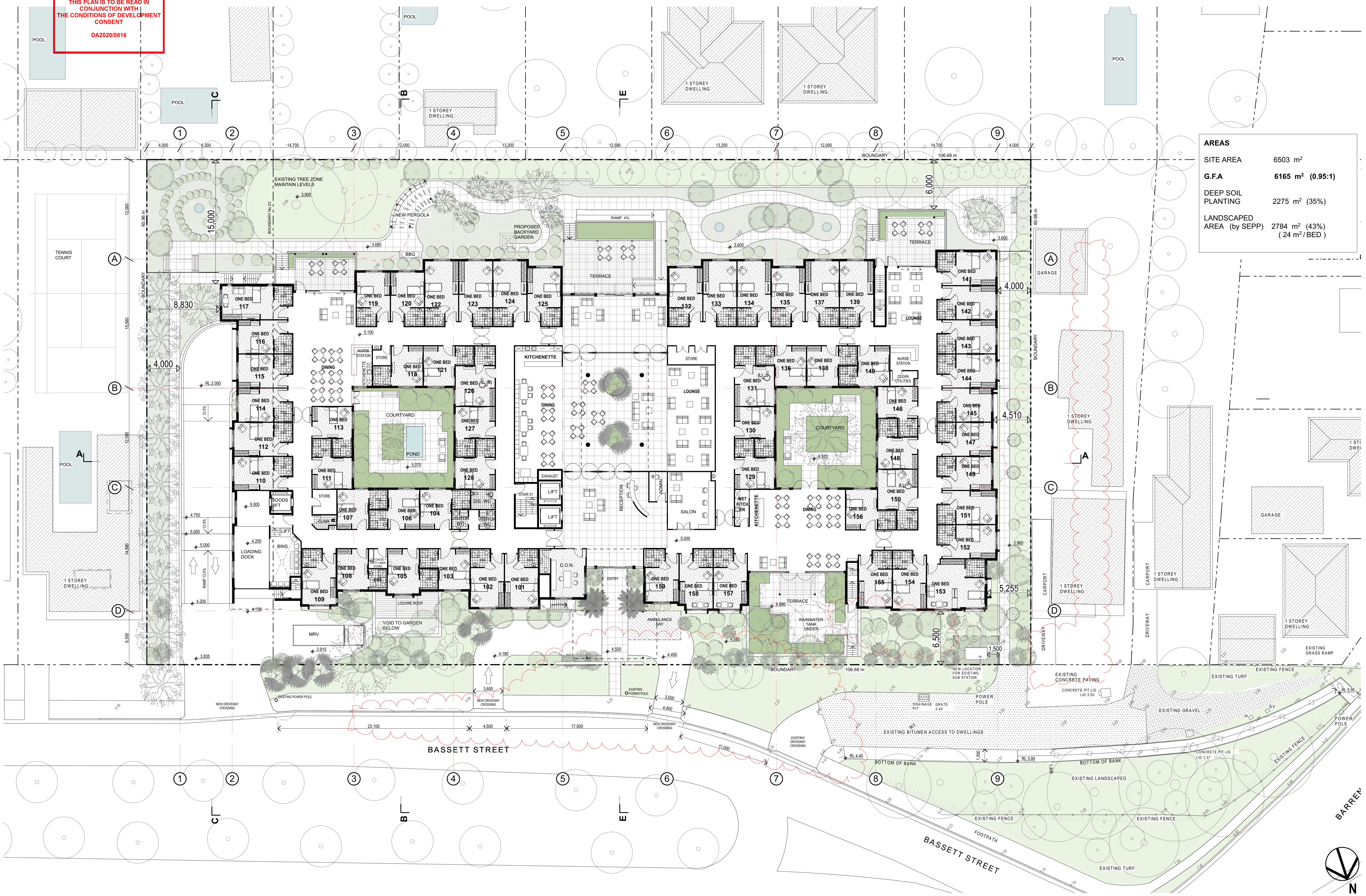
PARKING REQUIREMENTS

50 STAFF	25 SPACES
RESIDENTS	
118 BEDS	11.8 SPACES
TOTAL	37 SPACES
	(39 PROPOSED)



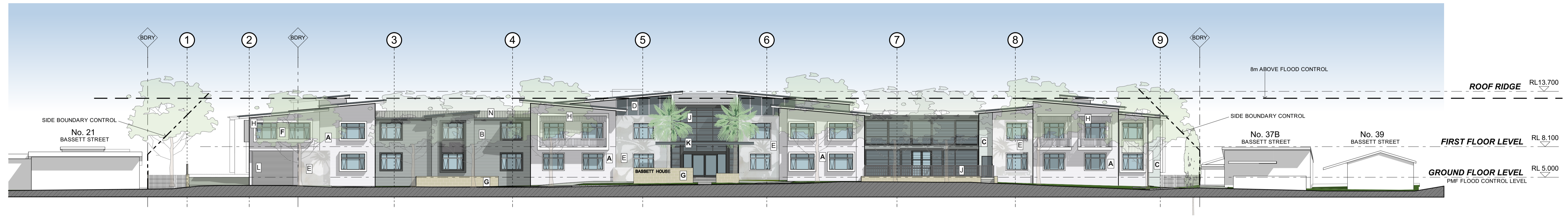
THIS PLAN IS TO BE READ IN CONJUNCTION WITH THE CONDITIONS OF DEVELOPMENT CONSENT DA2020/0816

AREAS	
SITE AREA	6503 m ²
G.F.A	6165 m ² (0.95:1)
DEEP SOIL PLANTING	2275 m ² (35%)
LANDSCAPED AREA (by SEPP)	2784 m ² (43%) (24 m ² /BED)

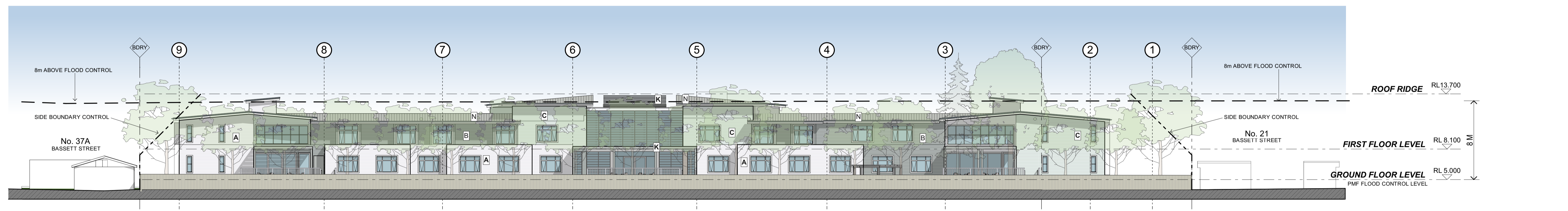




AREAS	
SITE AREA	6503 m ²
G.F.A	6165 m ² (0.95:1)
DEEP SOIL PLANTING	2275 m ² (35%)
LANDSCAPED AREA (by SEPP)	2784 m ² (43%) (24 m ² / BED)



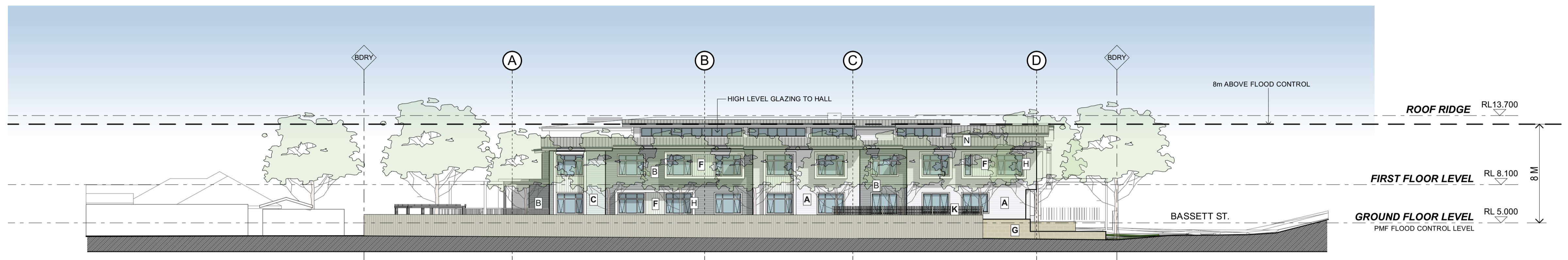
NORTH ELEVATION



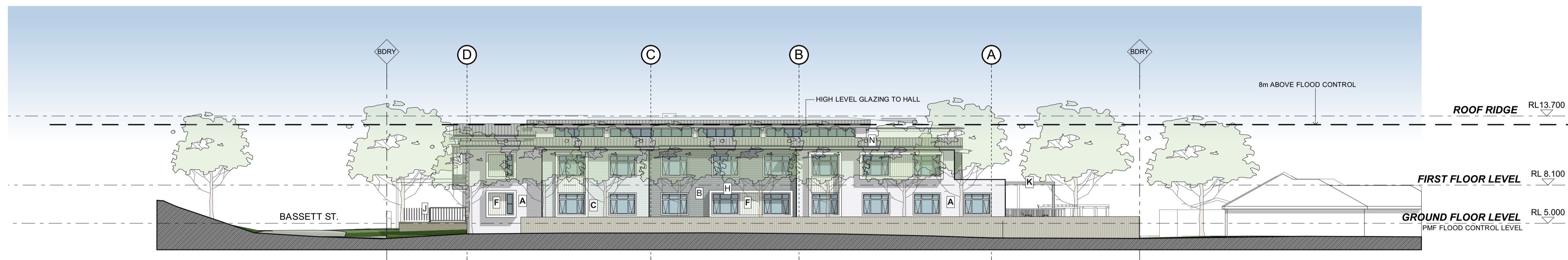
SOUTH ELEVATION

EXTERNAL FINISHES
NOTE: FINISHES AND IMAGES SHOWN ARE INDICATIVE OF DESIGN INTENT ONLY

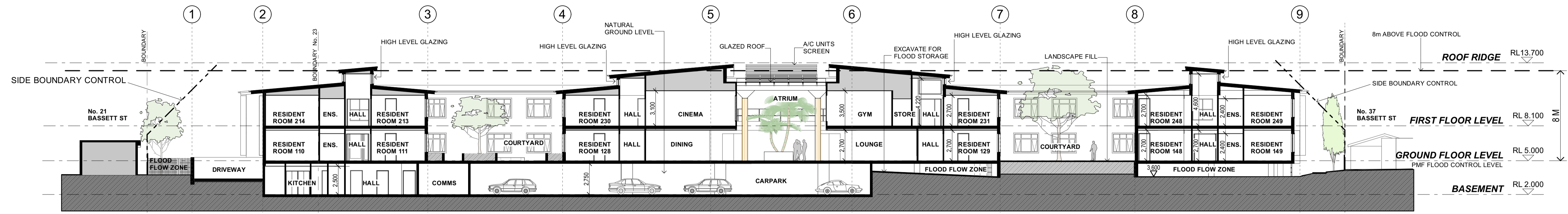
FC CLADDING A WEATHERBOARD JH SCYON STRIA 325 VERTICAL COLOUR - OFF WHITE GREY	B WEATHERBOARD JH PRIMELINE NEWPORT 170 COLOUR - DARK NEUTRAL GREY	C WEATHERBOARD JH PRIMELINE NEWPORT 170 COLOUR - PALE BLUE GREY	D FLAT SHEET COLOUR - PAINT LIGHT GREY	E GRAPHIC WALL CLADDING FLORAL GRAPHIC BY LOCAL ARTIST PAINT OR SHAPED FC PANELS - NEUTRAL COLOURS	F WEATHERBOARD VERT. JH SCYON 133 COLOUR - WHITE	STONE CLADDING G MAIN STONE CLADDING SMOOTH FACE SANDSTONE	FAÇADE FEATURES H FAÇADE TRIMS COLOUR OFF WHITE	METALWORK COLOUR J DARK METALWORK COLOUR - COLORBOND BASALT	K LIGHT METALWORK COLOUR - METALLIC SILVER GREY	L ROLLER SHUTTER COLOUR - OFF WHITE	ROOF FINISHES N METAL SHEET ROOFING COLORBOND - SHALE GREY	P PEBBLE ROOF BALAST RIVER PEBBLE
---	---	--	--	--	---	--	---	---	---	---	--	---



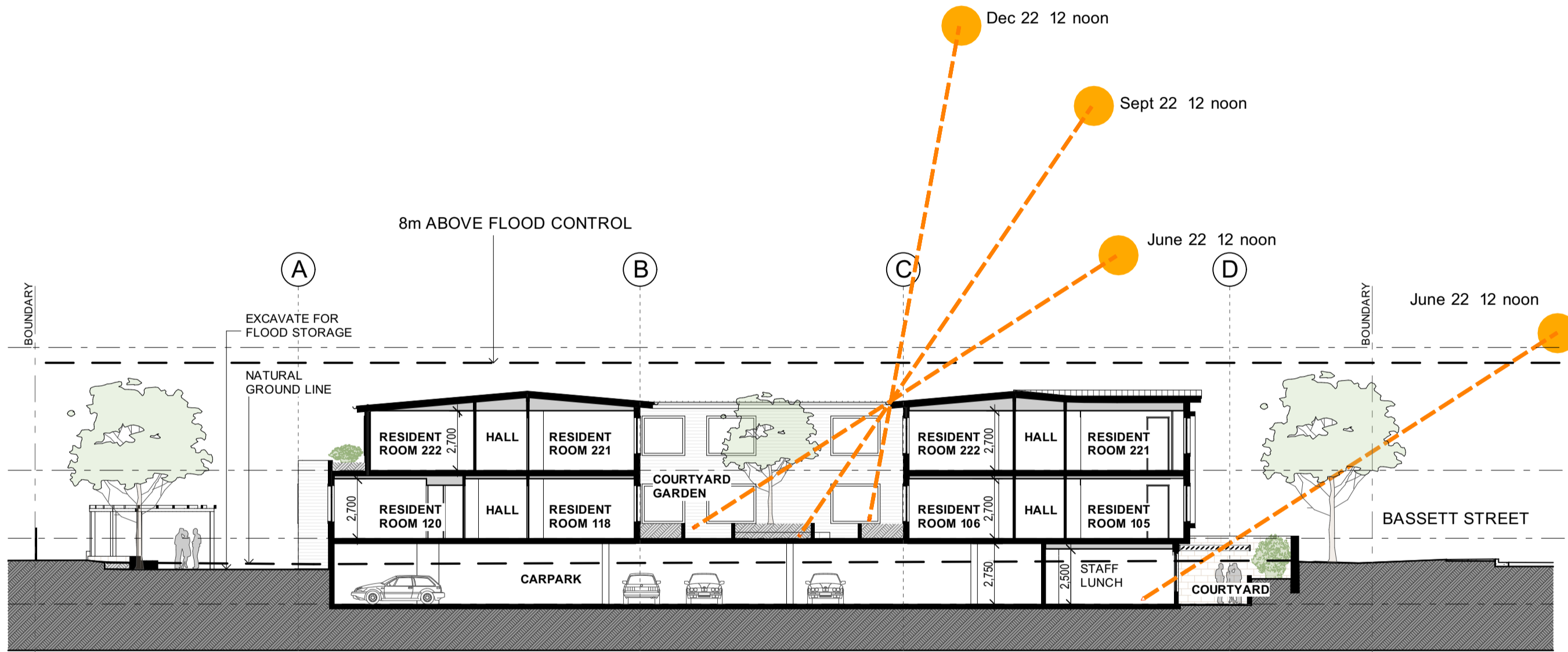
EAST ELEVATION



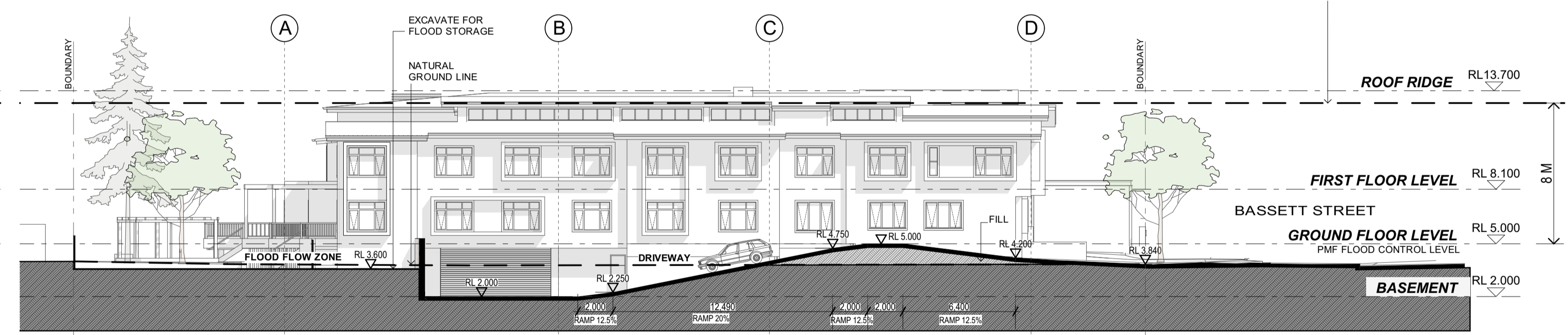
WEST ELEVATION



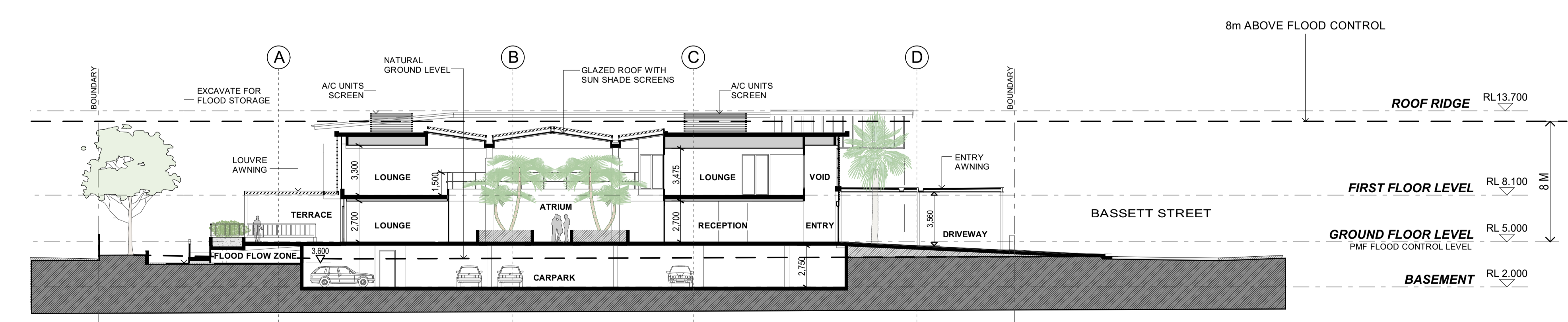
SECTION A



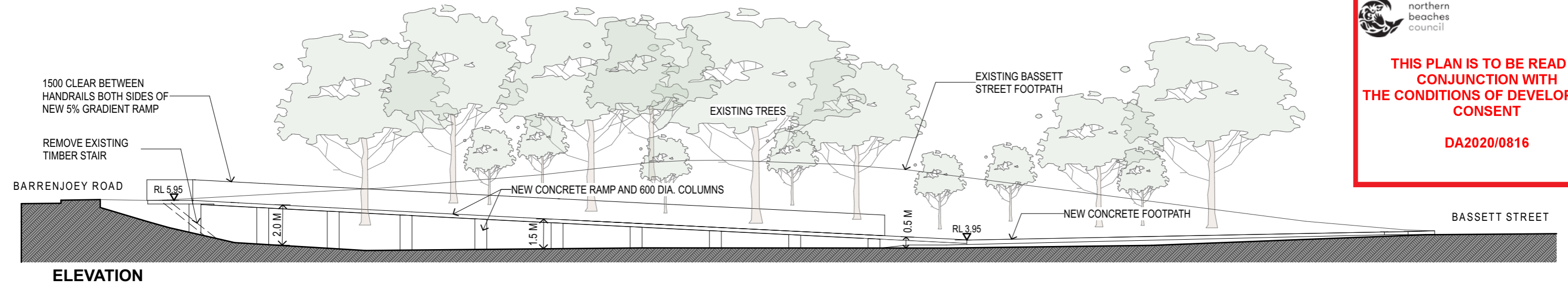
SECTION B



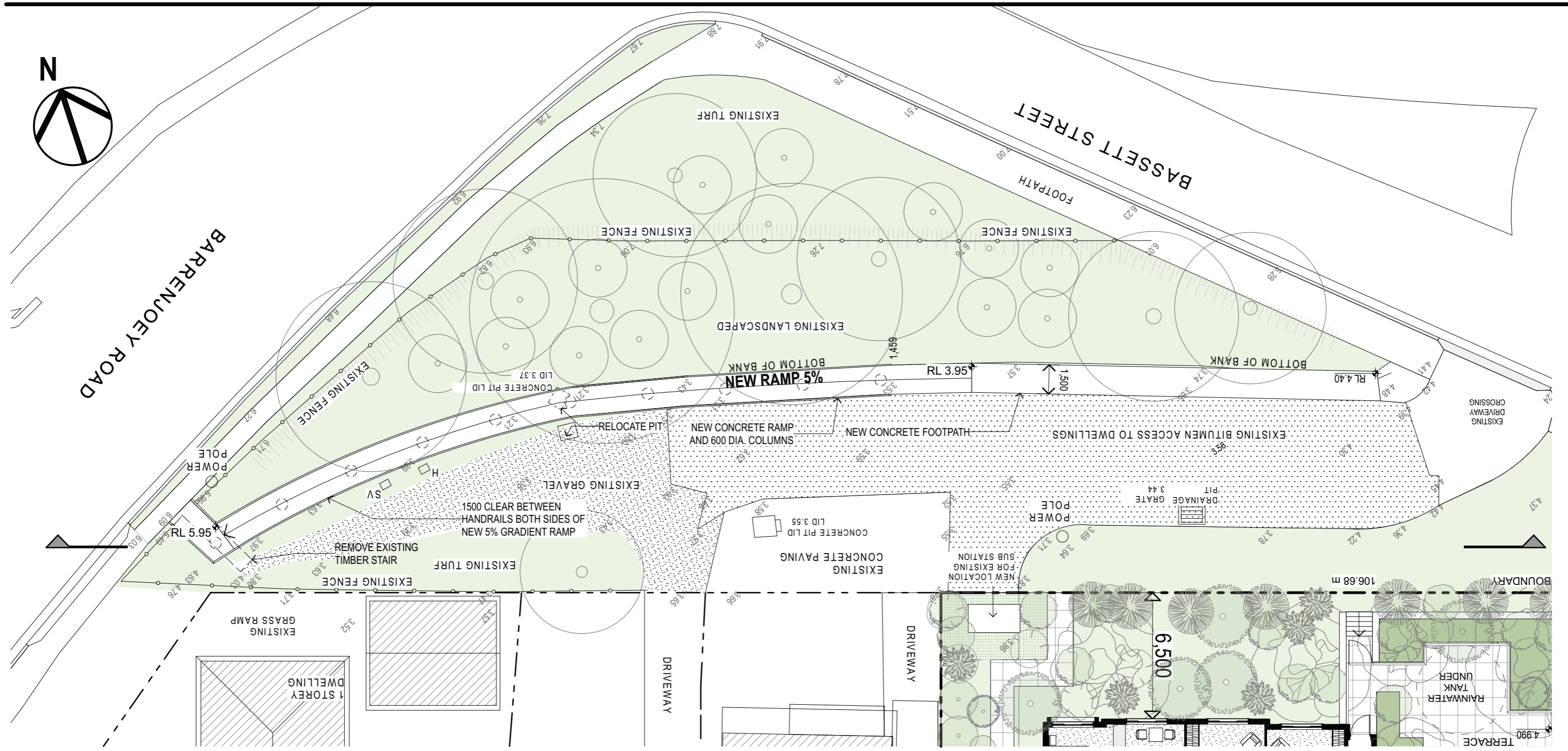
SECTION C



SECTION E



ELEVATION

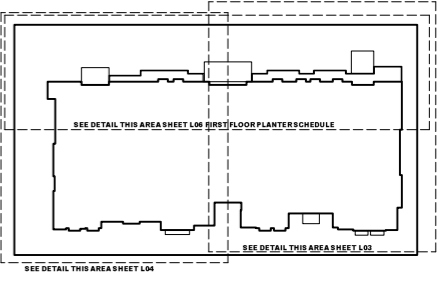
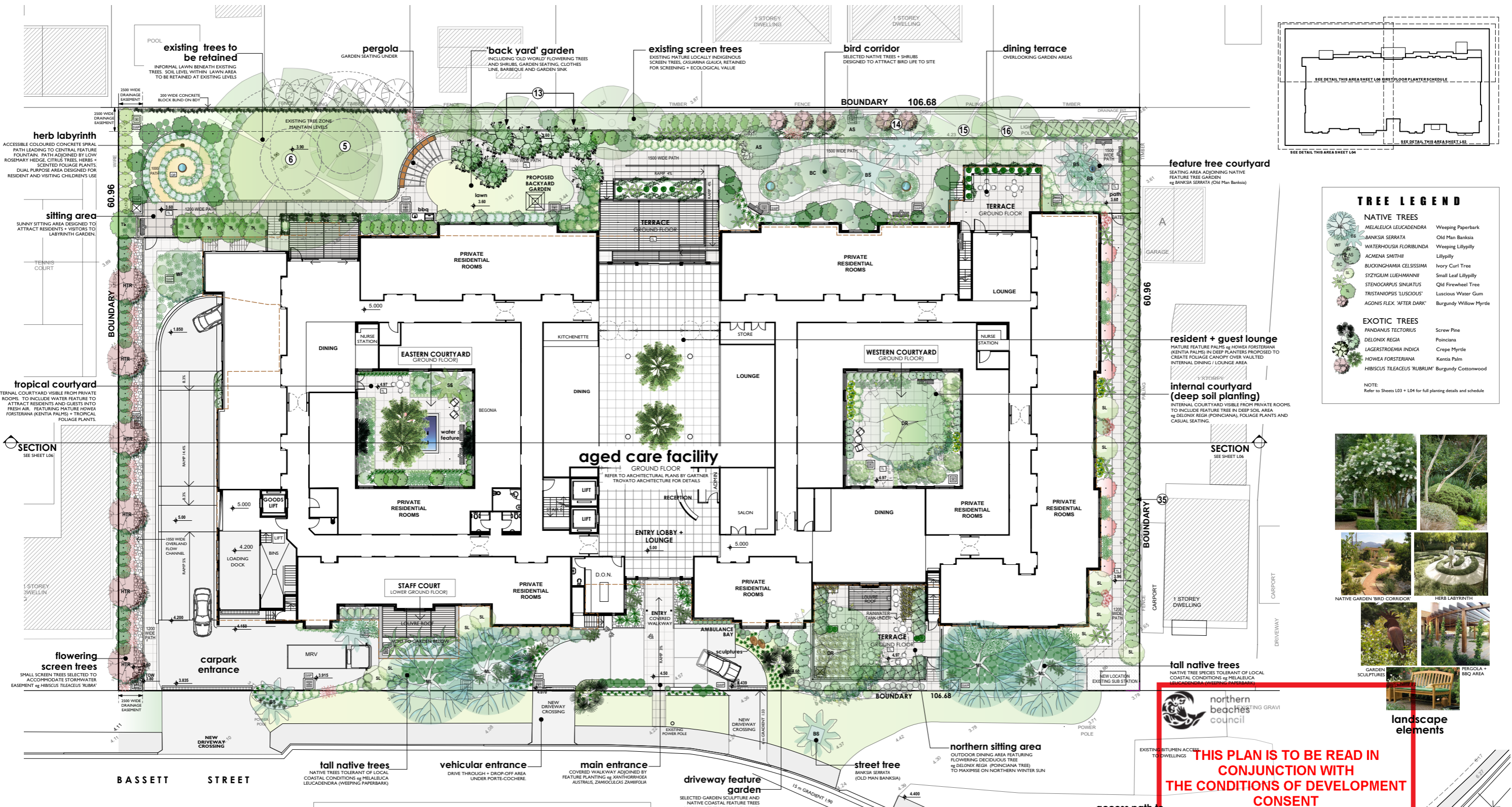


BUS STOP ACCESS PATH



GARTNERTROVATO
ARCHITECTS

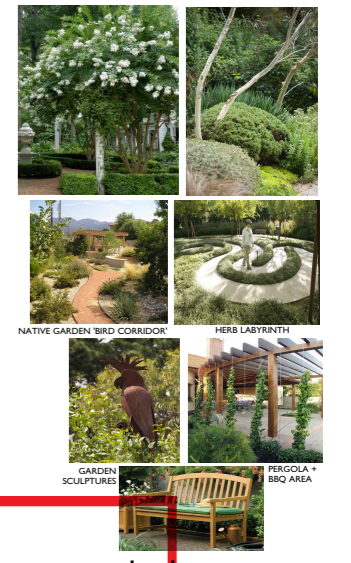
+61 2 9979 4411
+61 2 9979 4422
GTA@G.T.COM.AU



TREE LEGEND

NATIVE TREES	
MELALEUCA LEUCADENDRA	Weeping Paperbark
BANKSIA SERRATA	Old Man Banksia
WATERHUSIA FLORIBUNDA	Weeping Lillypilly
ACMENA SMITHII	Lillypilly
BUCKINGHAMIA CELSISSIMA	Ivory Curl Tree
STYZIGIUM LUEHMANNII	Small Leaf Lillypilly
STENOCARPUS SINULATUS	Old Firewheel Tree
TRISTANOPSIS 'LUSCIOUS'	Luscious Water Gum
AGONIS FLEX 'AFTER DARK'	Burgundy Willow Myrtle
EXOTIC TREES	
PANDANUS TECTORIUS	Screw Pine
DELONIX REGIA	Poinciana
LAGERSTROEMIA INDICA	Crape Myrtle
HOWEA FORSTERIANA	Kentia Palm
HIBISCUS TILICEUS 'RUBRUM'	Burgundy Cottonwood

NOTE: Refer to Sheets L03 + L04 for full planting details and schedule



northern beaches council

THIS PLAN IS TO BE READ IN CONJUNCTION WITH THE CONDITIONS OF DEVELOPMENT CONSENT DA2020/0816

landscaping elements

SITE LANDSCAPE PLAN

SCALE: 1:200 @ A1
 REFER TO SHEET L03, L04 + L06 PLANTING PLANS FOR FULL PLANTING DETAILS

0m 2m 4m 6m 8m 10m

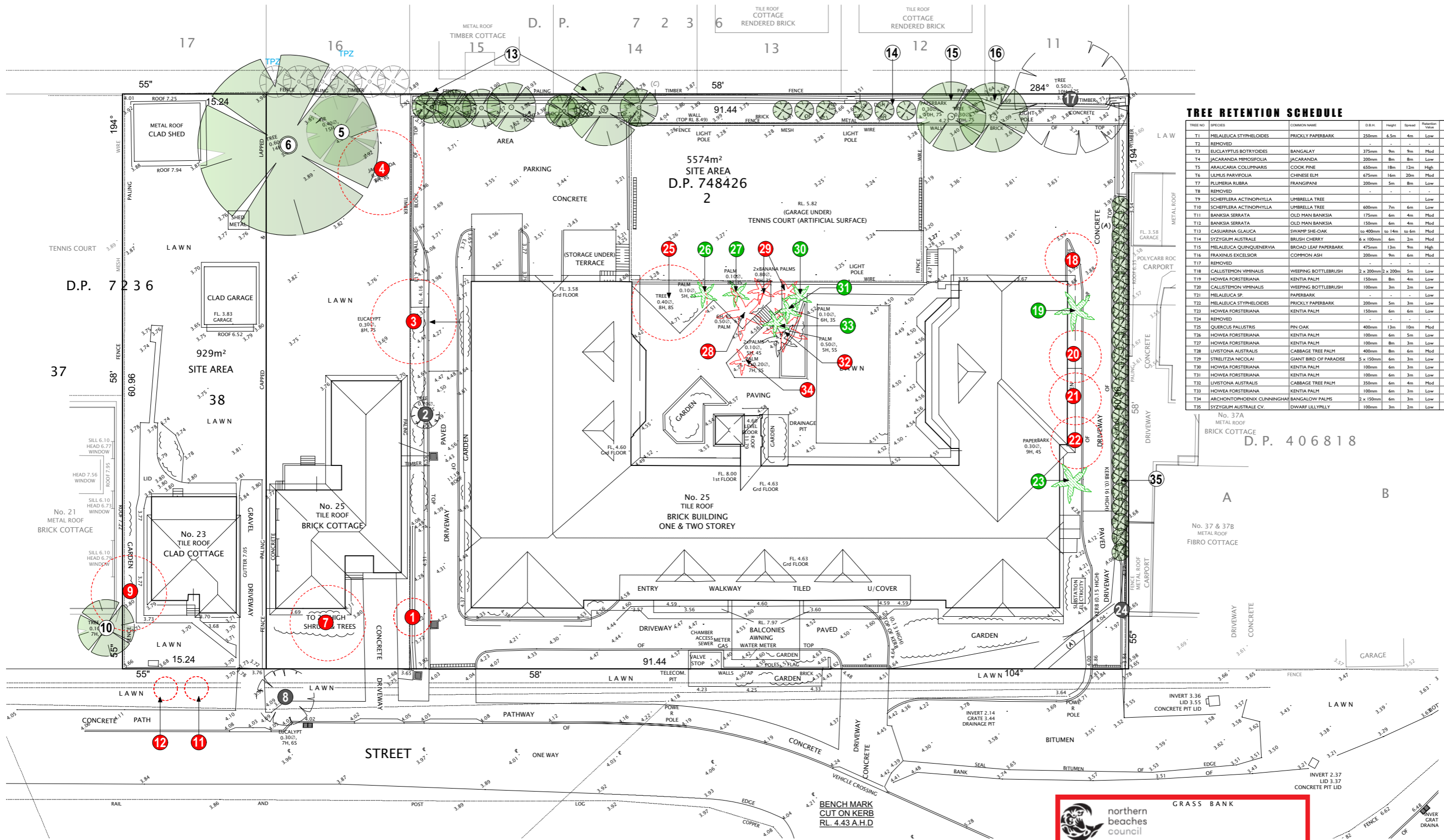
NOTE: PLAN TO BE READ IN CONJUNCTION WITH: ARCHITECTURAL PLANS BY GARTNER TROYATO ARCHITECTS; ARBORICULTURAL IMPACT ASSESSMENT BY URBAN FORESTRY AUSTRALIA (Feb 2020)

LEGEND

PROPOSED LEVELS	MASONRY RETAINING WALLS	TEED COURTYARDS + PATHWAYS
EXISTING SPOT LEVELS	LOW STONE EDGE ADJOINING PATHS + GARDEN BEDS	FIBBLE MULCH INCLUDING OVERLAND FLOW PATH
BOUNDARY	SELECTED GARDEN SCULPTURES	CONCRETE DRIVEWAY
EXISTING TREES TO BE RETAINED	INFORMAL GARDEN SEATING	TEED INTERNAL COURTYARDS
LINE OF UNDERGROUND CARPARK	1000mm WIDE STABILISED DICO GRANITE PATH	LAWN AREA 'SIR WALTER BIRK' WALKER
STORMWATER PITS		

LANDSCAPE DESIGN PRINCIPLES

- TO COMPLEMENT AND ENHANCE THE EXISTING STREETSCAPE**
 - PROPOSAL DESIGNED TO PROVIDE LANDSCAPE SURROUNDINGS THAT REFLECT AND HARMONISE WITH EXISTING STREETSCAPE AND CREATE A DISTINCT LANDSCAPE CHARACTER.
 - CANOPY TREES WITHIN FRONT BUILDING SETBACK MELALEUCA LEUCADENDRA (WEEPING PAPERBARK) SELECTED TO SCREEN + SOFTEN THE BUILT FORM AND PROVIDE CONSISTENCY WITH THE LOCALITY.
 - ENTRANCE FEATURE PLANTING OF PANDANUS TECTORIUS (SCREW PINE) PROPOSED TO REINFORCE COASTAL NATURE OF THE SITE.
 - A COMBINATION OF FOLIAGE AND FLOWERING SPECIES ARE DESIGNED TO ENHANCE THE PROSPECTIVE EXPERIENCE IN BASSETT STREET.
 - NEW STREET TREES BANKSIA SERRATA (OLD MAN BANKSIA) PROPOSED TO COMPENSATE FOR EXISTING STREET TREES REMOVED FOR DEVELOPMENT.
- TO REDUCE THE IMPACT OF THE BUILT FORM**
 - CANOPY TREES AND UNDERSTORY PLANTING PROPOSED TO PROVIDE SCALE AND SOFTEN THE BUILT FORM PRESENTING THE DEVELOPMENT WITH A VEGETATED SETTING AND MINIMISING THE VISUAL IMPACT.
 - INTERNAL COURTYARD AREAS OFFER LEAFY OUTDOOR FROM PRIVATE RESIDENTIAL ROOMS AND ARE ACCESSIBLE OUTDOOR SEATING AREAS.
 - ALL CARPARKING IS PROPOSED TO BE PROVIDED UNDERGROUND TO REDUCE THE VISUAL IMPACT OF DEVELOPMENT AND REDUCE IMPACT ON STREET AND ADJOINING PROPERTIES.
- TO PROTECT EXISTING TREES**
 - ALL TREES IDENTIFIED AS SUITABLE FOR RETENTION IN ARBORICULTURAL ASSESSMENT SHALL BE RETAINED AND PROTECTED TO PROVIDE FUTURE AMENITY.
 - NO HIGH RETENTION VALUE TREES PROPOSED FOR REMOVAL.
- TO REPLENISH TREE CANOPY + COMPENSATE FOR TREE REMOVAL**
 - THE FOLLOWING CANOPY TREES HAVE BEEN PROPOSED TO COMPENSATE FOR TREES TO BE REMOVED AND TO REPLENISH NEIGHBOURHOOD TREE CANOPY: MELALEUCA LEUCADENDRA, WEeping PAPERBARK (4), BUCKINGHAMIA CELSISSIMA, IVORY CURL TREE (2), WATERHUSIA FLORIBUNDA, LILLYPILLY (1), PONDICIANA (2), WEeping LILLYPILLY (1).
- TO CREATE A LANDSCAPE AS AN EXTENSION OF INTERNAL SPACES**
 - PERIMETER GARDENS AND LAWN AREA DESIGNED TO ENCOURAGE GENTLE EXERCISE AND FACILITATE FLEXIBLE OUTDOOR RECREATION WITH VISITORS.
 - EXTENDED VIEWS INTO THE GARDEN HAVE BEEN CONSIDERED TO ENHANCE DAILY LIFE FOR LESS ACTIVE RESIDENTS.
 - INTERNAL COURTYARD AREAS OFFER LEAFY OUTDOOR FROM PRIVATE RESIDENTIAL ROOMS AND ARE ACCESSIBLE OUTDOOR SEATING AREAS.
 - OUTDOOR DINING AREAS AND TERRACES PROVIDE EXTENDED VIEWS INTO THE GARDENS.
- TO MAINTAIN NEIGHBOUR PRIVACY + AMENITY**
 - SCREEN PLANTING CONSISTING OF PRINCIPALLY FAST GROWING NATIVE SPECIES IS PROPOSED TO PROVIDE BOUNDARY PRIVACY SCREENING.
- TO ENHANCE THE GARDEN EXPERIENCE FOR RESIDENTS**
 - SPECIES SELECTION HAVE BEEN MADE WITH CONSIDERATION OF SITE CONDITIONS AND TO PROVIDE A STIMULATING RANGE OF FLOWER AND FOLIAGE TEXTURES AND COLOURS TO ENCOURAGE RESIDENTS USE OF LANDSCAPE SPACE. NATIVE AND EXOTIC SPECIES HAVE BEEN INCLUDED. FEATURES INCLUDE:
 - LAWN AREA + LANDSCAPED GARDEN PATHWAYS
 - OUTDOOR SEATING IN SUN AND SHADE
 - YEAR ROUND COLOUR
 - BIRD CORRIDOR NATIVE GARDEN
 - OLD WOODY BACK YARD GARDEN
 - FLOWERING TREES + SHRUBS
 - GARDEN SCULPTURES
 - WATER FEATURING YARD GARDEN
 - GARDEN REGOLA + BBQ AREA
- TO PROVIDE FOR ACCESSIBLE USE OF GARDEN**
 - SAFE AND ACCESSIBLE INCLUDING SURFACE SELECTION, GENTLE GRADIENTS, APPROPRIATE SEATING, HANDRAILS AND FENCING SHALL BE INCORPORATED INTO USE OF OUTDOOR SPACES.
 - SAFETY MEASURES INCLUDING SURFACE SELECTION, GENTLE GRADIENTS, APPROPRIATE SEATING, HANDRAILS AND FENCING SHALL BE INCORPORATED INTO USE OF OUTDOOR SPACES.
- TO COMPLY WITH DESIGN PRINCIPLES OF SEP**
 - THE PROPOSED LANDSCAPE AMPS TO MEET THE DESIGN PRINCIPLES OF THE RELEVANT SEP (HOUSING FOR SENIORS OR PEOPLE WITH A DISABILITY) 2004. REFER TO ARCHITECTURAL PLANS FOR DEEP SOIL AND SITE CALCULATIONS.



TREE RETENTION SCHEDULE

TREE NO.	SPECIES	COMMON NAME	DBH	Height	Spread	Retention Value	STATUS
T1	MELALEUCA STYPHELOIDES	PRICKLY PAPERBARK	250mm	6.5m	4m	Low	Remove for Works
T2	REMOVED						
T3	EUCALYPTUS BOTRYOIDES	BANGALAY	375mm	9m	9m	Mod	Remove for Works
T4	JACARANDA MIMOSIFOLIA	JACARANDA	200mm	8m	8m	Low	Remove (Exempt)
T5	ARALICARIA COLUMNARIS	COOK PINE	650mm	18m	12m	High	Retain + Protect
T6	ULMUS PARVIFOLIA	CHINESE ELM	675mm	16m	20m	Mod	Retain + Protect
T7	PLUMERIA RUBRA	FRANGIPANI	200mm	5m	8m	Low	Remove for Works
T8	REMOVED						
T9	SCHEFFERA ACTINOPHYLLA	UMBRELLA TREE				Low	Remove (Exempt)
T10	SCHEFFERA ACTINOPHYLLA	UMBRELLA TREE	600mm	7m	6m	Low	Remove (Exempt)
T11	BANKSIA SERRATA	OLD MAN BANKSIA	175mm	6m	4m	Mod	Remove for Works
T12	BANKSIA SERRATA	OLD MAN BANKSIA	150mm	6m	4m	Mod	Remove for Works
T13	CASUARINA GLAUCA	SWAMP SHE-OAK	to 400mm	to 14m	to 6m	Mod	Retain + Protect
T14	SYZYGIUM AUSTRALE	BRUSH CHERRY	6 x 100mm	6m	2m	Mod	Retain + Protect
T15	MELALEUCA QUINQUENERVIA	BROAD LEAF PAPERBARK	475mm	13m	9m	High	Remove for Works
T16	FRAXINUS EXCELSIOR	COMMON ASH	200mm	9m	6m	Mod	Retain + Protect
T17	REMOVED						
T18	CALLISTEMON VIMINALIS	WEeping BOTTLEBRUSH	2 x 200mm	2 x 200m	5m	Low	Remove (Exempt)
T19	HOWEA FORSTERIANA	KENTIA PALM	150mm	8m	4m	Low	Transplant if Viable
T20	CALLISTEMON VIMINALIS	WEeping BOTTLEBRUSH	100mm	3m	2m	Low	Remove
T21	MELALEUCA SP.	PAPERBARK	-	-	-	Low	Remove
T22	MELALEUCA STYPHELOIDES	PRICKLY PAPERBARK	200mm	5m	3m	Low	Transplant if Viable
T23	HOWEA FORSTERIANA	KENTIA PALM	150mm	6m	6m	Low	Transplant if Viable
T24	REMOVED						
T25	QUERCUS PALLISTRIS	PIN OAK	400mm	13m	10m	Mod	Remove for Works
T26	HOWEA FORSTERIANA	KENTIA PALM	100mm	6m	5m	Low	Transplant if Viable
T27	HOWEA FORSTERIANA	KENTIA PALM	100mm	8m	3m	Low	Transplant if Viable
T28	LYSTONIA AUSTRALIS	CABBAGE TREE PALM	400mm	8m	6m	Mod	Remove
T29	STRELTIZIA NICOLAI	GIANT BIRD OF PARADISE	5 x 150mm	6m	3m	Low	Remove for Works
T30	HOWEA FORSTERIANA	KENTIA PALM	100mm	6m	3m	Low	Transplant if Viable
T31	HOWEA FORSTERIANA	KENTIA PALM	100mm	6m	3m	Low	Transplant if Viable
T32	LYSTONIA AUSTRALIS	CABBAGE TREE PALM	350mm	6m	4m	Mod	Remove
T33	HOWEA FORSTERIANA	KENTIA PALM	100mm	6m	3m	Low	Transplant if Viable
T34	ARCHONTOBIUM CUNNINGHAMII	BANGALOW PALMS	2 x 150mm	6m	3m	Low	Remove (Exempt)
T35	SYZYGIUM AUSTRALE CV.	EDWARD LILYPALLY	100mm	3m	2m	Low	Retain + Protect

TREE RETENTION PLAN

SCALE 1:200 @ A1

NOTE
 PLAN TO BE READ IN CONJUNCTION WITH ARCHITECTURAL PLANS BY GARTNER TROVATO ARCHITECTS
 ARBORICULTURAL IMPACT ASSESSMENT BY PAINTREE CONSULTING



LEGEND

RL 11.97	PROPOSED LEVELS	EXISTING TREES TO BE RETAINED ON SITE	KENTIA PALMS PROPOSED TO BE TRANSPLANTED
3.80	EXISTING SPOT LEVELS	EXISTING TREES TO BE RETAINED OFF SITE	EXISTING PALMS TO BE REMOVED
(Red circle with slash)	EXISTING TREES TO BE REMOVED	SURVEYED TREES NO LONGER LOCATED ON SITE	

TREE RETENTION AIMS

- THE LANDSCAPE DESIGN FOR THE SITE AIMS TO RETAIN EXISTING TREES WHEREVER POSSIBLE WITH A PRIORITY BEING:
- TO REMOVE ONLY THOSE TREES LOCATED WITHIN THE FOOTPRINT OF THE PROPOSED BUILDING OR DRIVEWAY OR THOSE TREES DEEMED BY THE PROJECT ARCHITECT TO BE UNSTABLE, BEYOND THEIR USEFUL LIFE EXPECTANCY / SINESCENT, OR THOSE TREES IDENTIFIED AS EXEMPT FROM PROTECTION UNDER PIT/WATER DCP.
 - TO RETAIN NATIVE TREES T13 CASUARINA GLAUCA, T14 SYZYGIUM AUSTRALE, T15 MELALEUCA QUINQUENERVIA ALONG THE SOUTHERN BOUNDARY WHICH OFFER ESTABLISHED SCREENING AND AMENITY.
 - TO TRANSPLANT SUITABLE MATURE PALM TREES REQUIRED TO BE REMOVED FOR THE DEVELOPMENT ELSEWHERE ON SITE SO AS TO PROVIDE AN ESTABLISHED CONTRIBUTION TO THE FUTURE LANDSCAPE AREAS OF THE AGED FACILITY.
 - TO RETAIN EXISTING SCREEN SHRUBS T25 SYZYGIUM AUSTRALE IDENTIFIED BY SURVEY ON WESTERN BOUNDARY AS VALUABLE PRIVACY SCREENING ALONG NEIGHBOURING PROPERTY BOUNDARY.
 - THE LANDSCAPE PLANS HAVE BEEN INFORMED BY THE DETAILED ARBORICULTURAL REPORT PREPARED BY URBAN FORESTRY AUSTRALIA. TREE NUMBERS ALLOCATED IN THE ARBORICULTURAL REPORT HAVE BEEN USED ON LANDSCAPE PLANS. SEVERAL YOUNG TREES / SHRUBS, CONSIDERED USEFUL FOR RETENTION AND NOT SHOWN ON SURVEY HAVE ALSO BEEN INCLUDED ON LANDSCAPE PLANS.

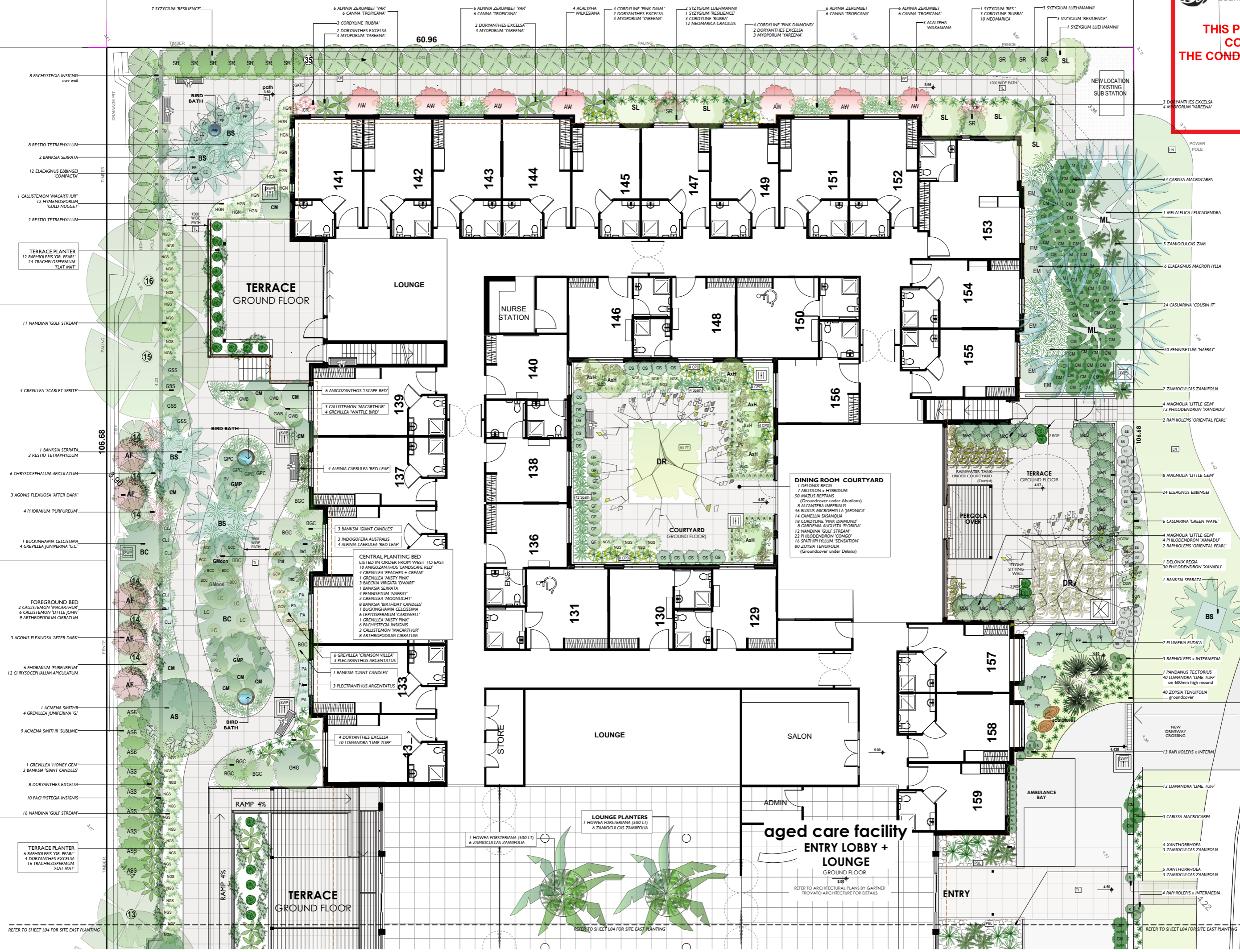
northern beaches council

THIS PLAN IS TO BE READ IN CONJUNCTION WITH THE CONDITIONS OF DEVELOPMENT CONSENT

DA2020/0816

THIS PLAN IS TO BE READ IN CONJUNCTION WITH THE CONDITIONS OF DEVELOPMENT CONSENT

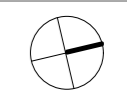
DA2020/0816



NOTE:
REFER TO SHEET L04 FOR PLANTING DETAILS EASTERN PORTION OF SITE.
REFER TO SHEET L05 FOR FULL PLANTING SCHEDULE.

AMENDMENTS

frish dobson landscape architecture
340 HARKING PARADE, AVALON, NSW 2107
0438 983000
frish@frishdobson.com.au



CLIENT
Thompsons Health Care

PROJECT
AGED CARE FACILITY
23 + 33 BASSETT STREET
MONA VALE

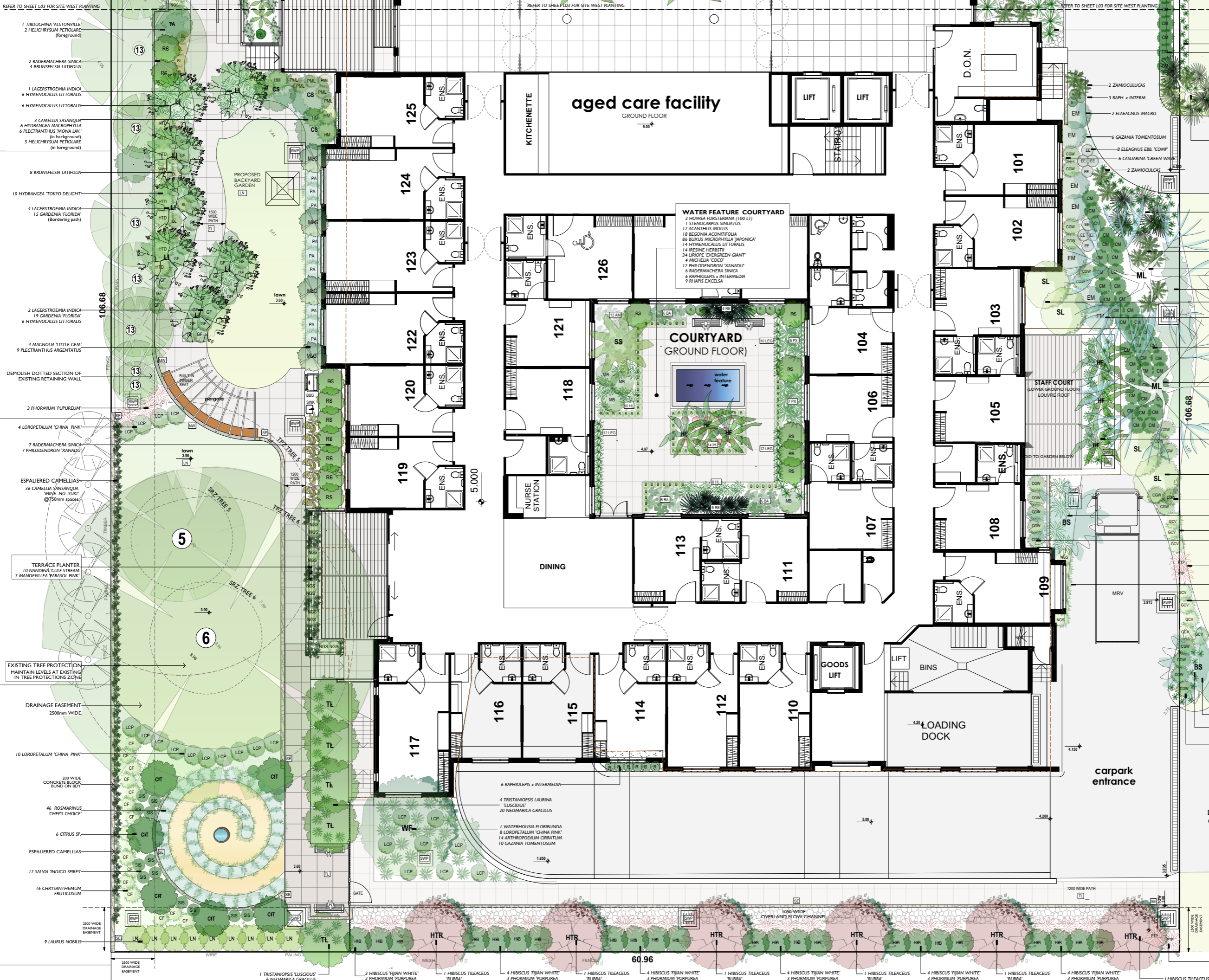
PLANTING PLAN WEST

SCALE
DATE 24.3.20
ISSUE DA
SHEET 3 OF 6

JOB
2003

DWG NO
DA-L03

THIS PLAN IS TO BE READ IN CONJUNCTION WITH THE CONDITIONS OF DEVELOPMENT CONSENT
DA2020/0816



- 1 TIBOUCHINA 'ALSTONVILLE'
- 2 HELICHRYSUM PETIOLARE (foreground)
- 2 RADERMACHERA SINICA
- 4 BRUNSFELSIA LATIFOLIA
- 1 LAGERSTROEMIA INDICA
- 6 HYMENOCALLIS LITTORALIS
- 6 HYMENOCALLIS LITTORALIS
- 3 CAMELLIA SASANQUA
- 6 HYDRANGEA MACROPHYLLA
- 6 FLECTRANTHUS 'MONA LAV.' (in background)
- 5 HELICHRYSUM PETIOLARE (in foreground)
- 8 BRUNSFELSIA LATIFOLIA
- 10 HYDRANGEA 'TOKYO DELIGHT'
- 4 LAGERSTROEMIA INDICA
- 15 GARDENIA 'FLORIDA' (bordering path)
- 2 LAGERSTROEMIA INDICA
- 19 GARDENIA 'FLORIDA'
- 6 HYMENOCALLIS LITTORALIS
- 4 MAGNOLIA 'LITTLE GEM'
- 9 FLECTRANTHUS ARGENTATUS
- DEMOLISH DOTTED SECTION OF EXISTING RETAINING WALL
- 3 PHORMIUM 'PURPUREUM'
- 4 LOROPETALUM 'CHINA PINK'
- 7 RADERMACHERA SINICA
- 7 PHILODENDRON 'KANADU'
- ESPALIERED CAMELLIAS
- 36 CAMELLIA SASANQUA 'MINE-NO-TURK' @ 700mm spacing
- TERRACE PLANTER
- 10 NANDINA 'GULF STREAM'
- 7 MANDEVILLEA 'PARASOL PINK'
- EXISTING TREE PROTECTION MAINTAIN LEVELS AT EXISTING IN TREE PROTECTIONS ZONE
- DRAINAGE EASEMENT 2500mm WIDE
- 10 LOROPETALUM 'CHINA PINK'
- 230 WIDE CONCRETE BLOCK BUND ON BDT
- 46 ROSMARINUS 'CHEF'S CHOICE'
- 6 CITRUS SP.
- ESPALIERED CAMELLIAS
- 12 SALVIA 'INDIGO SPIRES'
- 16 CHRYSANTHEMUM 'FRUITCOSUM'
- 9 LAURUS NOBILIS
- 1 TRISTANIOPSIS 'LUSCIOUS'
- 6 NEOMARICA GRACILLIS
- 3 HIBISCUS 'FIJIAN WHITE'
- 2 PHORMIUM 'PURPUREA'
- 1 HIBISCUS TILEACEUS 'RUBRA'
- 4 HIBISCUS 'FIJIAN WHITE'
- 3 PHORMIUM 'PURPUREA'
- 1 HIBISCUS TILEACEUS 'RUBRA'
- 4 HIBISCUS 'FIJIAN WHITE'
- 3 PHORMIUM 'PURPUREA'
- 1 HIBISCUS TILEACEUS 'RUBRA'
- 4 HIBISCUS 'FIJIAN WHITE'
- 3 PHORMIUM 'PURPUREA'
- 1 HIBISCUS TILEACEUS 'RUBRA'
- 4 HIBISCUS 'FIJIAN WHITE'
- 3 PHORMIUM 'PURPUREA'
- 1 HIBISCUS TILEACEUS 'RUBRA'
- 2 PHORMIUM 'PURPUREUM'
- 4 GAZANIA TOMENTOSUM

- 4 XANTHORHOEA
- 3 ZAMIOCULCAS ZAM.
- 12 LOMANDRA 'LIME TUFF'
- 6 CARISSA MACROCARPA
- 2 ZAMIOCULCAS
- 3 RAPH. x INTERM.
- 2 ELAEAGNUS MACRO.
- 6 GAZANIA TOMENTOSUM
- 8 ELAEAGNUS EBB. 'COMP'
- 6 CASUARINA 'GREEN WAVE'
- 2 ZAMIOCULCAS
- 1 PANDANUS TECTORIUS on 600mm mound
- 3 ZAMIOCULCAS ZAM.
- 6 LOMANDRA 'LIME TUFF'
- 8 ZOYSIA TENUIFOLIA
- 1 PANDANUS TECTORIUS on 600mm mound
- 40 LOMANDRA 'LIME TUFF'
- 5 ZAMIOCULCAS ZAMIIFOLIA
- 1 MELALEUCA LEUCADENDRA
- 12 CASUARINA 'COUSIN IT'
- 2 SYZYGIUM LUEHMANNII
- 5 ELAEAGNUS MACROPHYLLA
- 40 CARISSA MACROCARPA
- 1 MELALEUCA LEUCADENDRA
- 2 SYZYGIUM LUEHMANNII
- 6 CASUARINA 'GREEN WAVE'
- 1 BANKSIA SERRATA
- 4 PENNISETUM 'NAFRAY'
- 3 GREVILLEA 'CRIMSON V.'
- 5 CASUARINA 'GREEN WAVE'
- 2 PHORMIUM 'PURPUREUM'
- 4 GAZANIA TOMENTOSUM
- 6 NANDINA 'GULF STREAM'
- 5 GREVILLEA 'CRIMSON V.'
- 6 GAZANIA TOMENTOSA
- 1 BANKSIA SERRATA
- 6 LOMANDRA 'LIME TUFF'
- 4 CASUARINA 'GREEN WAVE'
- 4 LOMANDRA 'LIME TUFF'

NOTE:
REFER TO SHEET L03 FOR PLANTING DETAILS WESTERN PORTION OF SITE.
REFER TO SHEET L05 FOR FULL PLANTING SCHEDULE

AMENDMENTS

High Dobson Landscape Architecture
344 MARINE PARADE, AVALON, NSW 2107
0408 983020
info@highdobson.com.au

© HIGH DOBSON LANDSCAPE ARCHITECTURE
BUILDER TO CHECK ALL DIMENSIONS PRIOR TO CONSTRUCTION.
WHERE ANY DISCREPANCY EXISTS BETWEEN FIGURED AND FIELD DIMENSIONS, THE FIGURED DIMENSIONS SHALL PREVAIL.

CLIENT
Thompsons Health Care

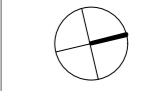
PROJECT
AGED CARE FACILITY
23 + 33 BASSETT STREET
MONA VALE

DRAWING
PLANTING PLAN EAST

SCALE 1:100A1
DATE 24.3.20
ISSUE EA 4 OF 6

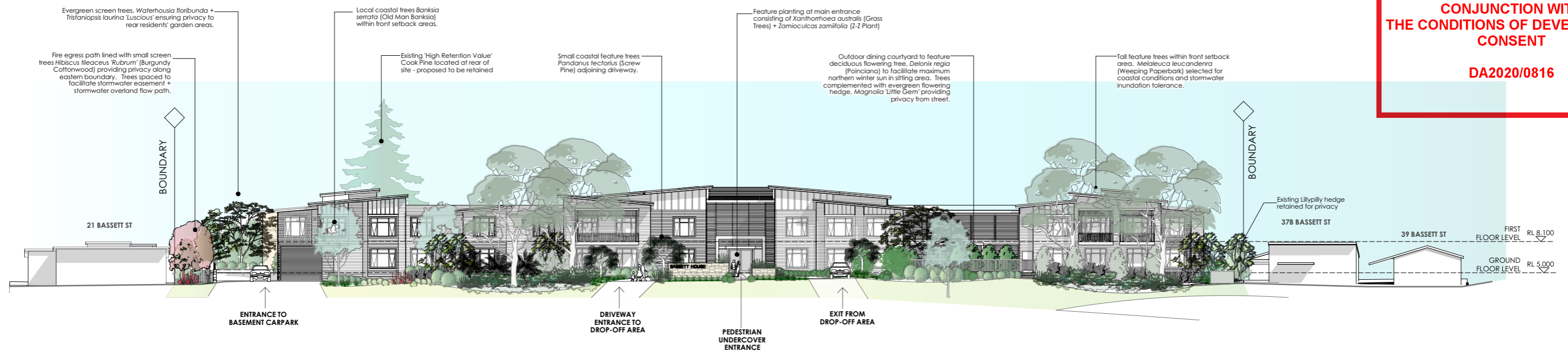
JOB
2003

DWG NO.
DA-L04

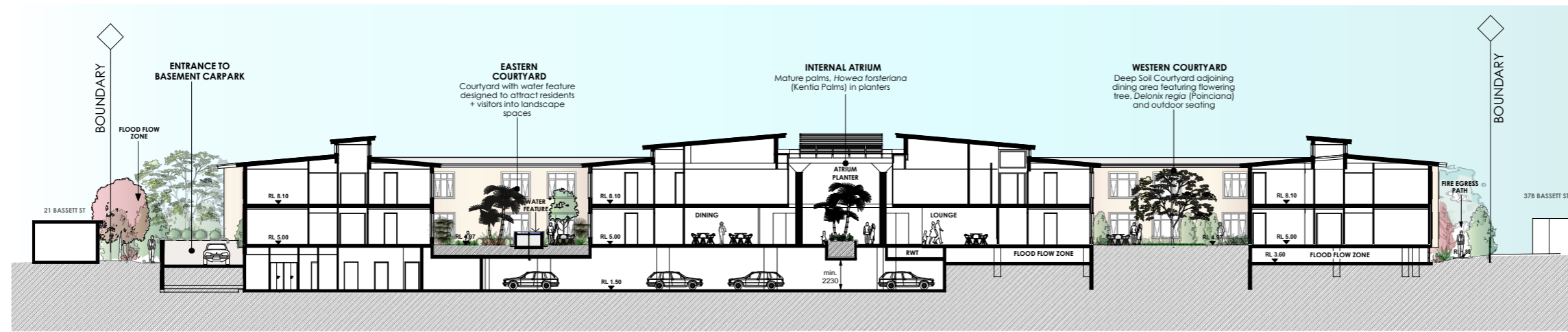


THIS PLAN IS TO BE READ IN CONJUNCTION WITH THE CONDITIONS OF DEVELOPMENT CONSENT

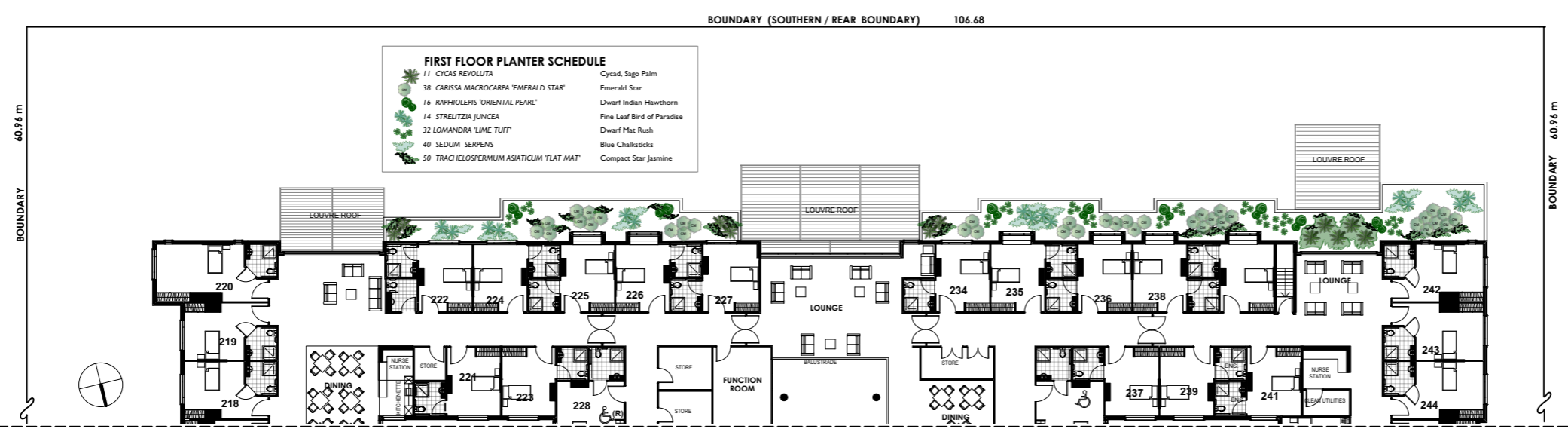
DA2020/0816



BASSETT STREET FRONT ELEVATION (NORTH)
SCALE 1:200 @ A1



LONG SECTION THROUGH SITE
SCALE 1:200 @ A1



PLANTING PLAN - FIRST FLOOR PLANTERS
PLAN SHOWS REAR (SOUTHERN) PORTION OF SITE
SCALE 1:200 @ A1

AMENDMENTS

IRISH DOBSON landscape architecture
16/18 HARRISON PARADE, AVALON NSW 2107
0428 983002
iris@irishdobson.com.au

© IRISH DOBSON LANDSCAPE ARCHITECTURE
BUILDING TO COVER ALL DIMENSIONS PRIOR TO CONSTRUCTION
WHERE ANY DISCREPANCY EXISTS BETWEEN FIGURES AND SCALED DIMENSIONS, THE FIGURED DIMENSIONS SHALL PREVAIL.

CLIENT
Thompsons Health Care

PROJECT
AGED CARE FACILITY
23 + 33 BASSETT ST
MONA VALE

DRAWING
ELEVATION SECTION FIRST FLOOR PLANTER

SCALE 1:200@A1
DATE 24.3.20
ISSUE DA
SHEET 8 of 8

JOB **2003**
DWG NO **DA-L06**