

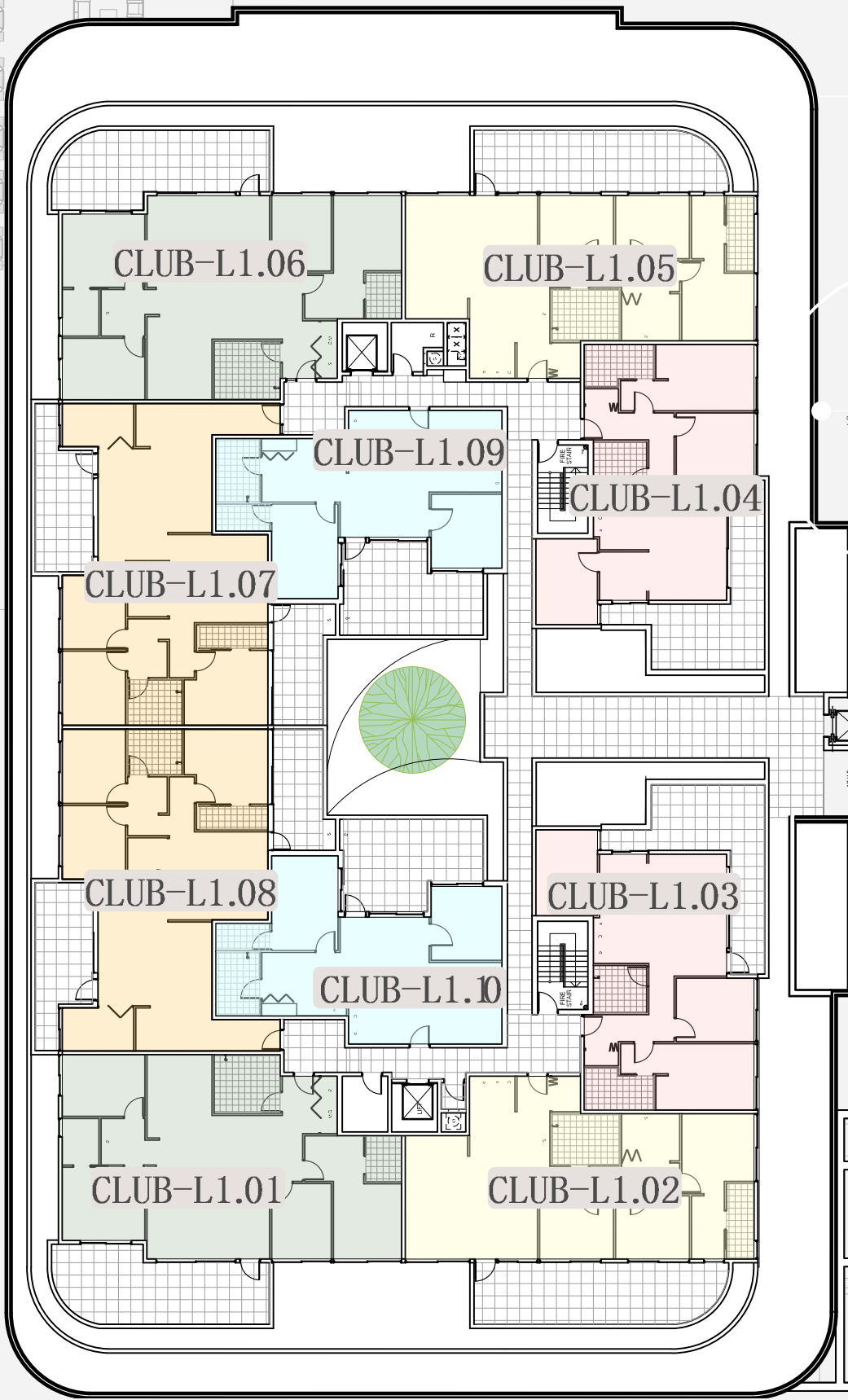
RETIREMENT LIVING
CLUB BUILDING _ LEVEL 1-2



FORESTVILLE RSL CLUB

RETIREMENT LIVING
22 MELWOOD AVE, FORESTVILLE NSW 2087
WITH QUATTRO ARCHITECTURE

Level 1



FLOOR PLAN
SCALE 1:300 @ A4



13 STUDY

DISCLAIMER: FORRESTV LEE RES, CLUBS AND QUATTRO ARCHITECTURE DO NOT GUARANTEE, WARRANT OR REPRESENT THAT THE INFORMATION CONTAINED IN THIS ADVERTISEMENT AND MARKETING DOCUMENTS IS CORRECT. ANY INTERESTED PARTIES SHOULD MAKE THEIR OWN ENQUIRIES AS TO THE ACCURACY OF THE INFORMATION, WE EXCLUDE ALL IMPLIED OR IMPLIED TERMS, CONDITIONS AND WARRANTIES ARISING OUT OF THIS DOCUMENT AND ANY LIABILITY FOR THE LOSS OR DAMAGE ARISING THEREFROM. THIS LAYOUT MAY BE SUBJECT TO VARIATIONS AND CHANGES TO THE FINAL WORKING DRAWINGS AND GRID LAYOUT. APARTMENT AREA HAS BEEN CALCULATED USING EPSCOD GUIDELINES AREA MEASURED FROM CENTRE LINE OF PARTY WALLS, OUTSIDE FACE OF COMMON AREA WALLS AND TO THE OUTSIDE FACE OF EXTERNAL WALLS.

RETIREMENT LIVING

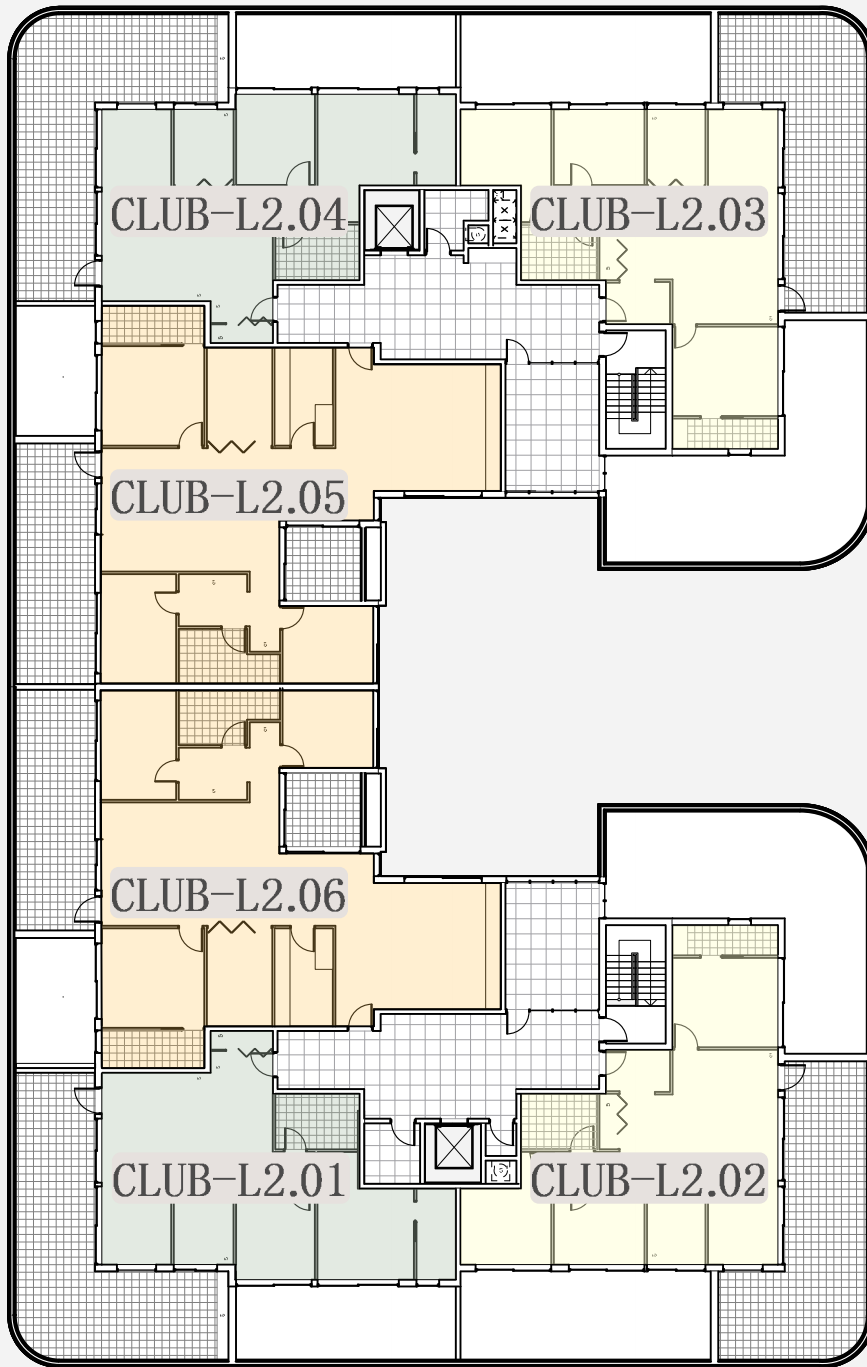


GROUND

-  3 BEDROOM UNITS | CLUB - L1.01, CLUB - L1.02, CLUB - L1.03, CLUB - L1.04, CLUB - L1.05, CLUB - L1.06, CLUB - L1.07, CLUB - L1.08
-  2 BEDROOM UNITS | CLUB - L1.09, CLUB - L1.10



FLOOR PLAN
SCALE 1:300 @ A4



13 STUDY

DISCLAIMER: FORESTVILLE 35, CLUB 3 AND QUATTRO ARCHITECTURE DO NOT GUARANTEE, WARRANT OR REPRESENT THAT THE INFORMATION CONTAINED IN THIS ADVERTISEMENT AND MARKETING DOCUMENTS IS CORRECT. ANY INTERESTED PARTIES SHOULD MAKE THEIR OWN ENQUIRIES AS TO THE ACCURACY OF THE INFORMATION WE EXCLUDE ALL IMPLIED OR STATED TERMS, CONDITIONS AND WARRANTIES ARISING OUT OF THIS DOCUMENT AND ANY LIABILITY FOR THE LOSS OR DAMAGE ARISING THEREFROM. THIS LAYOUT MAY BE SUBJECT TO VARIOUS AMENDMENTS AND CHANGES TO SUIT FINAL WORKING DRAWINGS AND GRID LAYOUT. APARTMENT AREA HAS BEEN CALCULATED USING BPSDD GUIDELINES. AREA MEASURED FROM CENTRE LINE OF PARTY WALLS, OUTSIDE FACE OF COMMON AREA WALLS AND TO THE OUTSIDE FACE OF EXTERNAL WALLS.

RETIREMENT LIVING



GROUND

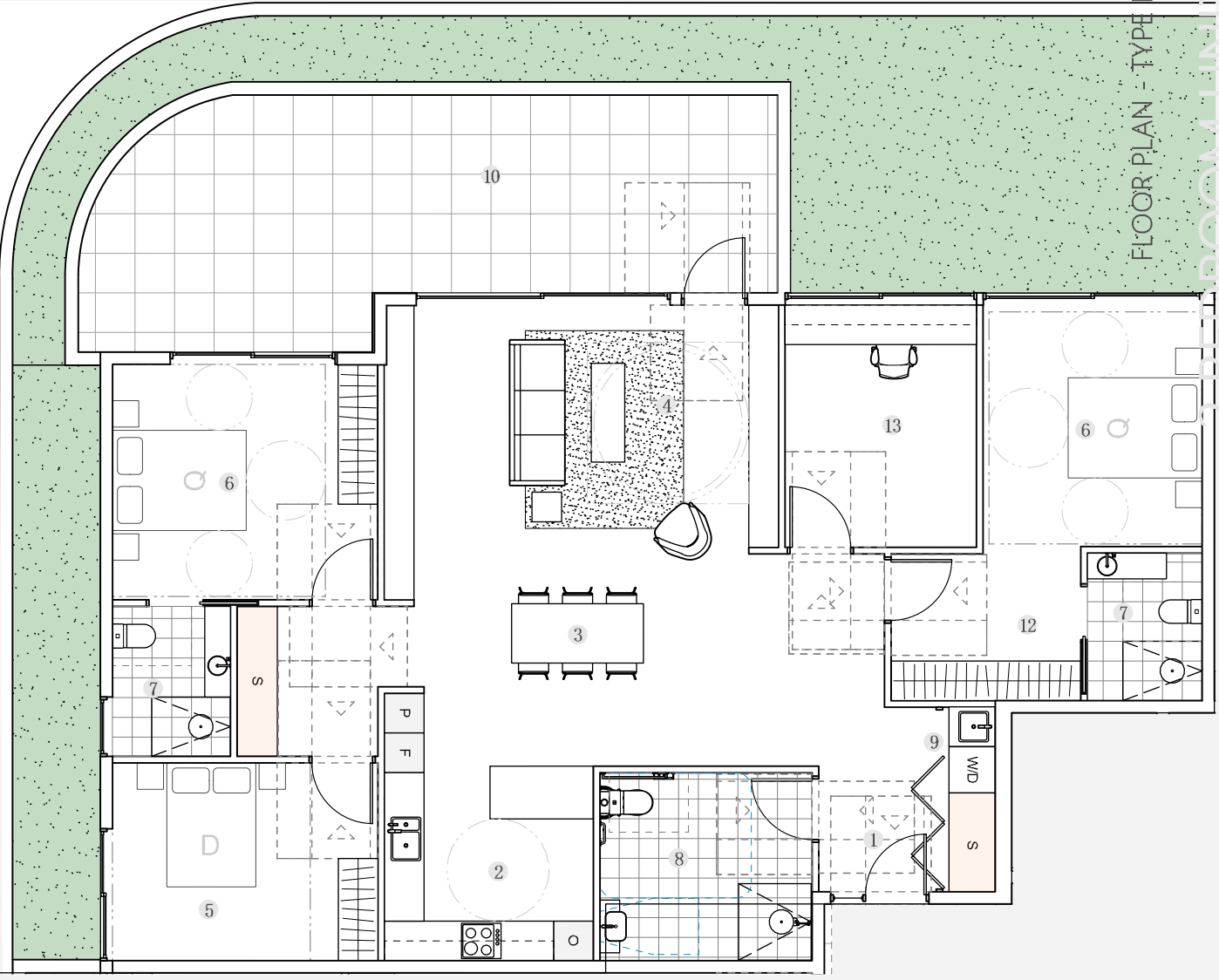
 3 BEDROOM UNITS | CLUB - L2.02, CLUB - L2.03, CLUB - L2.05, CLUB - L2.06

 2 BEDROOM UNITS | CLUB - L2.01, CLUB - L2.04



FLOOR PLAN - TYPE M

2-BEDROOM UNIT



LEGEND

1 ENTRY	7 ENSUITE	F REFRIGERATOR	WD WASHER /DRYER
2 KITCHEN	8 BATH	FR FRIDGE	B BROOM
3 DINING	9 LAUNDRY	FZ FREEZER	S STORAGE
4 LIVING	10 DECK / BALCONY	P PANTRY	R ROBE
5 BED	11 PRIVATE OPEN SPACE	D DISHWASHER	O OVEN
6 MASTER BED	12 WALK IN ROBE	L LAUNDRY	
	13 STUDY		

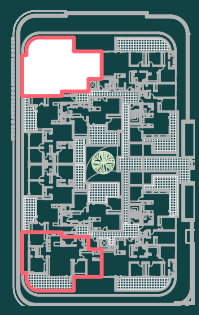
scale at A4 1:100

DISCLAIMER: FORRESTV L1, R5, C-L1.3 AND QUATTRO ARCHITECTURE DO NOT GUARANTEE, WARRANT OR REPRESENT THAT THE INFORMATION CONTAINED IN THIS ADVERTISEMENT AND MARKETING DOCUMENTS IS CORRECT. ANY INTERESTED PARTIES SHOULD MAKE THEIR OWN ENQUIRIES AS TO THE ACCURACY OF THE INFORMATION WE EXCLUDE ALL IMPLIED OR IMPLIED TERMS, CONDITIONS AND WARRANTIES ARISING OUT OF THIS DOCUMENT AND ANY LIABILITY FOR THE LOSS OR DAMAGE ARISING THEREFROM. THIS LAYOUT MAY BE SUBJECT TO VARIOUS AVENUE EVENTS AND CHANGES TO SUIT FINAL WORKING DRAWINGS AND GRID LAYOUT. A PARTMENT AREA HAS BEEN CALCULATED USING BPSDD GUIDELINES AREA VESTIBULE FROM CENTRE LINE OF PARTY WALLS, OUTSIDE FACE OF COMMON AREA WALLS AND TO THE OUTSIDE FACE OF EXTERNAL WALLS.

RETIREMENT LIVING



LEVEL 1
 3 | 3 | 2 | 1
 AREA INTERNAL 145m² | BALCONY 34m²
 UNITS | C-L1.06 | MIRROR C-L1.01



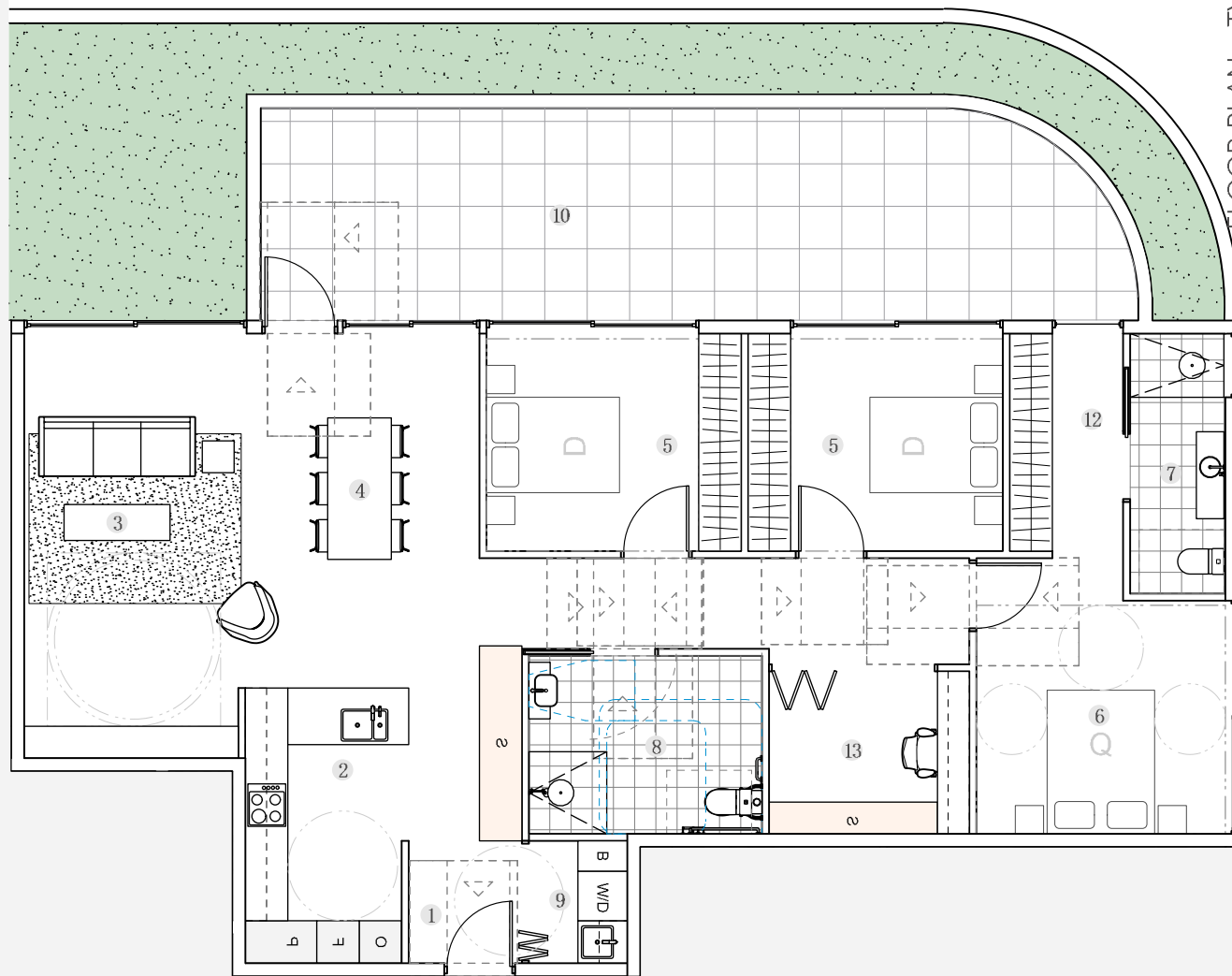
FLOOR PLATE



3 BEDROOM UNIT

CLUB BUILDING L1

FLOOR PLAN - TYPE N
SCALE 1:100 @ A4



LEGEND

1	ENTRY	7	ENSUITE	F	REFRIGERATOR	WD	WASHER /DRYER
2	KITCHEN	8	BATH	FR	FRIDGE	B	BROOM
3	DINING	9	LAUNDRY	FZ	FREEZER	S	STORAGE
4	LIVING	10	DECK / BALCONY	P	PANTRY	R	ROBE
5	BED	11	PRIVATE OPEN SPACE	D	DISHWASHER	O	OVEN
6	MASTER BED	12	WALK IN ROBE	L	LAUNDRY		
		13	STUDY				



DISCLAIMER: FORESTVILLE RES, C/L3 AND QUATTRO ARCHITECTURE DO NOT GUARANTEE, WARRANT OR REPRESENT THAT THE INFORMATION CONTAINED IN THIS ADVERTISEMENT AND MARKETING DOCUMENTS IS CORRECT. ANY INTERESTED PARTIES SHOULD MAKE THEIR OWN ENQUIRIES AS TO THE ACCURACY OF THE INFORMATION. WE EXCLUDE ALL IMPLIED OR EXPRESSED TERMS, CONDITIONS AND WARRANTIES ARISING OUT OF THIS DOCUMENT AND ANY LIABILITY FOR THE LOSS OR DAMAGE ARISING THEREFROM. THIS LAYOUT MAY BE SUBJECT TO VARIATIONS AND CHANGES TO SUIT FINAL WORKING DRAWINGS AND GRID LAYOUT. APARTMENT AREA HAS BEEN CALCULATED USING BPSDD GUIDELINES. AREA MEASURED FROM CENTRE LINE OF PARTY WALLS, OUTSIDE FACE OF COMMON AREA WALLS AND TO THE OUTSIDE FACE OF EXTERNAL WALLS.

RETIREMENT LIVING

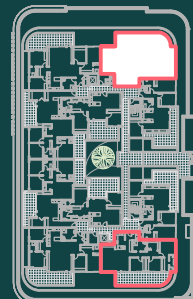


LEVEL 1



AREA INTERNAL 127m² | BALCONY 36m²

UNITS | C-L1.05 | MIRROR C-L1.02



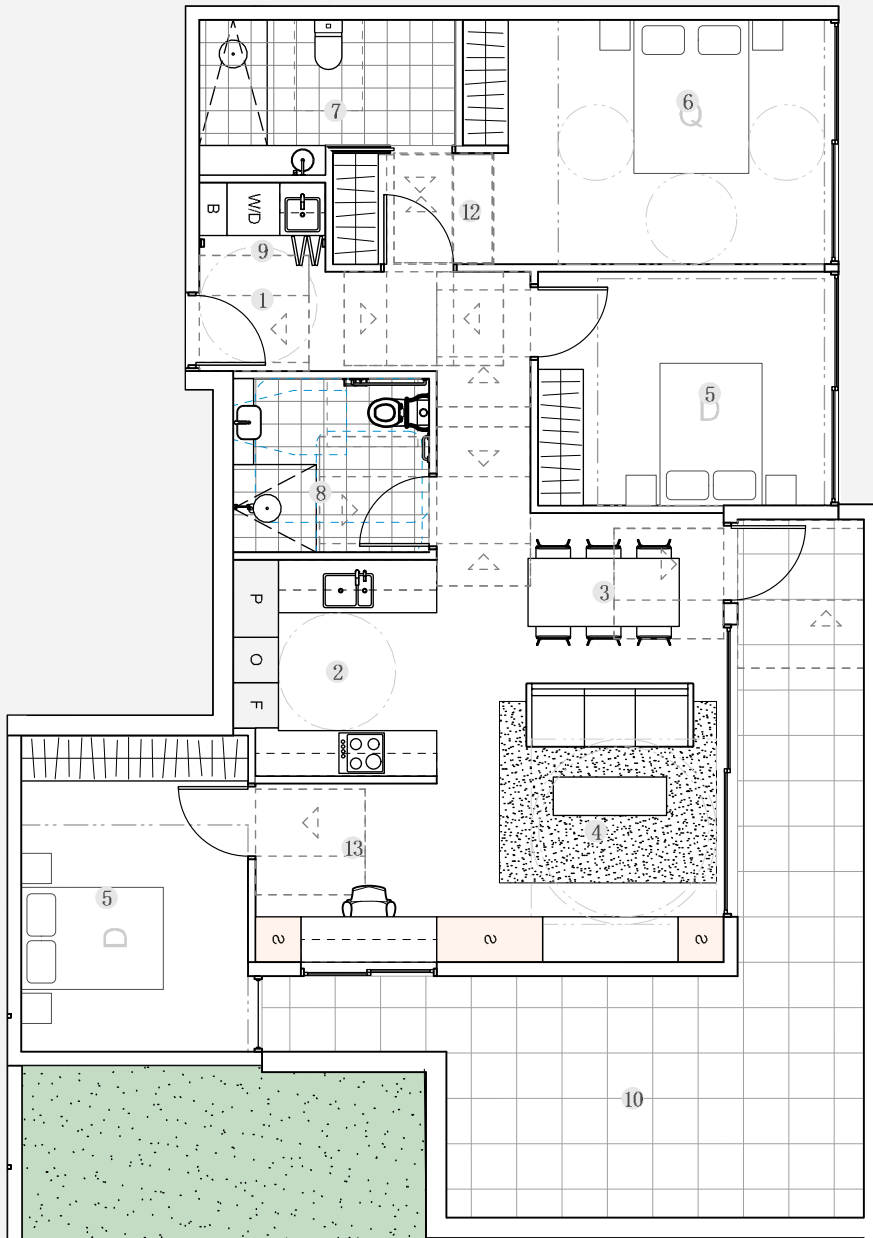
FLOOR PLATE



3 BEDROOM UNIT

CLUB BUILDING L1

FLOOR PLAN - TYPE O
SCALE 1:100 @ A4



LEGEND

1 ENTRY	7 ENSUITE	F REFRIGERATOR	WD WASHER /DRYER
2 KITCHEN	8 BATH	FR FRIDGE	B BROOM
3 DINING	9 LAUNDRY	FZ FREEZER	S STORAGE
4 LIVING	10 DECK / BALCONY	P PANTRY	R ROBE
5 BED	11 PRIVATE OPEN SPACE	D DISHWASHER	O OVEN
6 MASTER BED	12 WALK IN ROBE	L LAUNDRY	
	13 STUDY		



DISCLAIMER: FORESTVILLE 35, CUL3 AND QUATTRO ARCHITECTURE DO NOT GUARANTEE, WARRANT OR REPRESENT THAT THE INFORMATION CONTAINED IN THIS ADVERTISEMENT AND MARKETING DOCUMENTS IS CORRECT. ANY INTERESTED PARTIES SHOULD MAKE THEIR OWN ENQUIRIES AS TO THE ACCURACY OF THE INFORMATION WE EXCLUDE ALL IMPLIED OR IMPLIED TERMS, CONDITIONS AND WARRANTIES ARISING OUT OF THIS DOCUMENT AND ANY LIABILITY FOR THE LOSS OR DAMAGE ARISING THEREFROM. THIS LAYOUT MAY BE SUBJECT TO VARIATIONS AND CHANGES TO SUIT FINAL WORKING DRAWINGS AND GRID LAYOUT. A PART OF AREA HAS BEEN CALCULATED USING PROPOSED GLASS DESIGN AREA VESTIBULE FROM CENTRE LINE OF PARTY WALLS, OUTSIDE FACE OF COMMON AREA WALLS AND TO THE OUTSIDE FACE OF EXTERNAL WALLS.

RETIREMENT LIVING

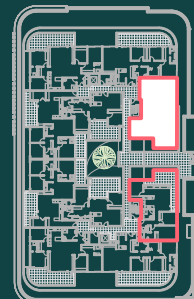


LEVEL 1

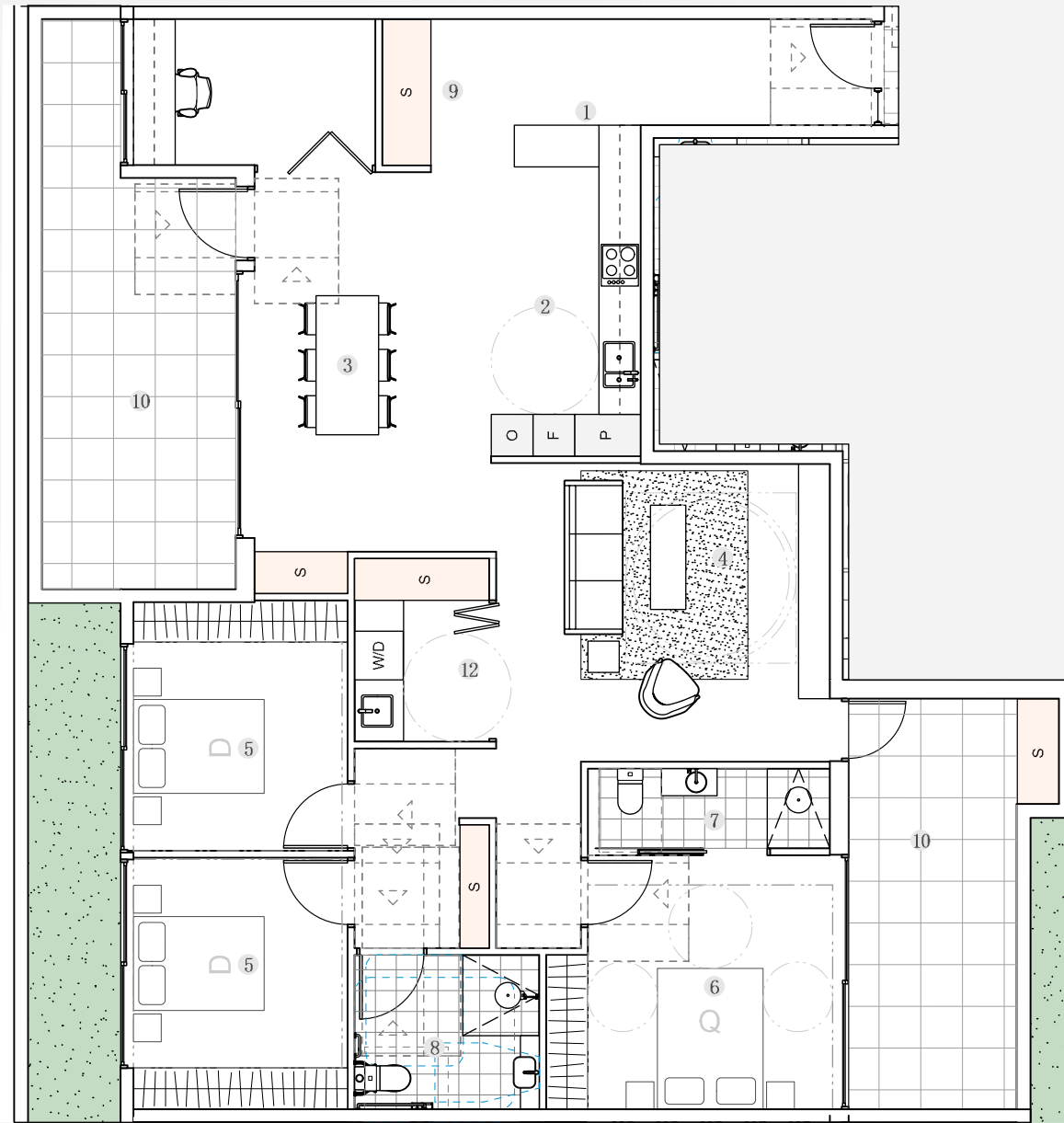


AREA INTERNAL 103m² | BALCONY 30m²

UNITS | C-L1.04 | MIRROR C-L1.03



FLOOR PLATE



FLOOR PLAN - TYPE P
SCALE 1:100 @ A4

3 BEDROOM UNIT

CLUB BUILDING L1

LEGEND

1 ENTRY	7 ENSUITE	F REFRIGERATOR	WD WASHER /DRYER
2 KITCHEN	8 BATH	FR FRIDGE	B BROOM
3 DINING	9 LAUNDRY	FZ FREEZER	S STORAGE
4 LIVING	10 DECK / BALCONY	P PANTRY	R ROBE
5 BED	11 PRIVATE OPEN SPACE	D DISHWASHER	O OVEN
6 MASTER BED	12 WALK IN ROBE	L LAUNDRY	
	13 STUDY		



DISCLAIMER: FORESTVILLE RES, C-L1.3 AND QUATTRO ARCHITECTURE DO NOT GUARANTEE, WARRANT OR REPRESENT THAT THE INFORMATION CONTAINED IN THIS ADVERTISEMENT AND MARKETING DOCUMENTS IS CORRECT. ANY INTERESTED PARTIES SHOULD MAKE THEIR OWN ENQUIRIES AS TO THE ACCURACY OF THE INFORMATION WE EXCLUDE ALL IMPLIED TERMS, CONDITIONS AND WARRANTIES ARISING OUT OF THIS DOCUMENT AND ANY LIABILITY FOR THE LOSS OR DAMAGE ARISING THEREFROM. THIS LAYOUT MAY BE SUBJECT TO VARIATIONS AND CHANGES TO THE FINAL WORKING DRAWINGS AND GRID LAYOUT. APARTMENT AREA HAS BEEN CALCULATED USING BPSDD GUIDELINES AREA VESTIBULE PROVIDED CENTRE LINE OF PARTY WALLS, OUTSIDE FACE OF COMMON AREA WALLS AND TO THE OUTSIDE FACE OF EXTERNAL WALLS.

RETIREMENT LIVING

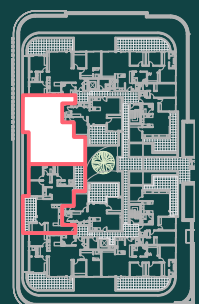


LEVEL 1

3 | 2 | 2 | 1

AREA INTERNAL 134m² | BALCONY 33m²

UNITS | C-L1.07 | MIRROR C-L1.08



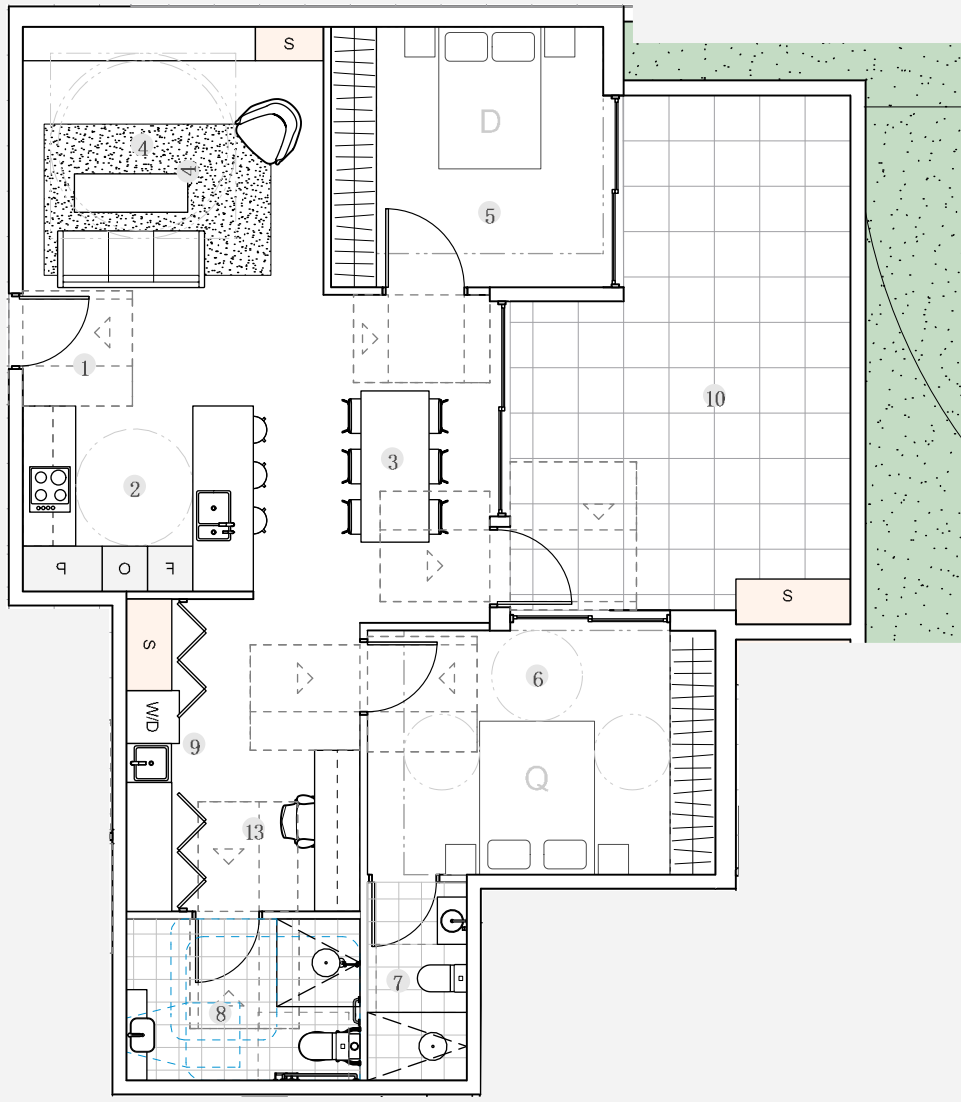
FLOOR PLATE



2 BEDROOM UNIT

CLUB BUILDING L1

FLOOR PLAN - TYPE Q
SCALE 1:100 @ A4



LEGEND

1 ENTRY	7 ENSUITE	F REFRIGERATOR	WD WASHER /DRYER
2 KITCHEN	8 BATH	FR FRIDGE	B BROOM
3 DINING	9 LAUNDRY	FZ FREEZER	S STORAGE
4 LIVING	10 DECK / BALCONY	P PANTRY	R ROBE
5 BED	11 PRIVATE OPEN SPACE	D DISHWASHER	O OVEN
6 MASTER BED	12 WALK IN ROBE	L LAUNDRY	
	13 STUDY		

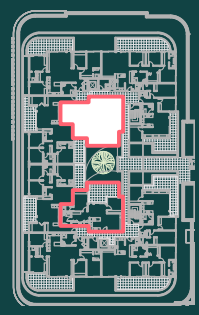
scale at A4 1:100
0m 500mm 1m 2.5m

DISCLAIMER: FORESTVILLE CLUB AND QUATTRO ARCHITECTURE DO NOT GUARANTEE, WARRANT OR REPRESENT THAT THE INFORMATION CONTAINED IN THIS ADVERTISEMENT AND MARKETING DOCUMENTS IS CORRECT. ANY INTERESTED PARTIES SHOULD TAKE THEIR OWN ENQUIRIES AS TO THE ACCURACY OF THE INFORMATION. WE EXCLUDE ALL IMPLIED OR EXPRESSED TERMS, CONDITIONS AND WARRANTIES ARISING OUT OF THIS DOCUMENT AND ANY LIABILITY FOR THE LOSS OR DAMAGE ARISING THEREFROM. THIS LAYOUT MAY BE SUBJECT TO VARIATIONS AND CHANGES TO SUIT FINAL WORKING DRAWINGS AND GRID LAYOUT. APARTMENT AREA HAS BEEN CALCULATED USING EPSDD GL DEL. NET AREA VERSUS RED PROJ CENTRE LINE OF PARTY WALLS, CUTS OFF FACE OF COMMON AREA WALLS AND TO THE CUTS OFF FACE OF EXTERNAL WALLS.

RETIREMENT LIVING



LEVEL 1
 2 |  2 |  1 | 
 AREA INTERNAL 91m² | BALCONY 27m²
 UNITS | C-L1.09 | MIRROR C-L1.10



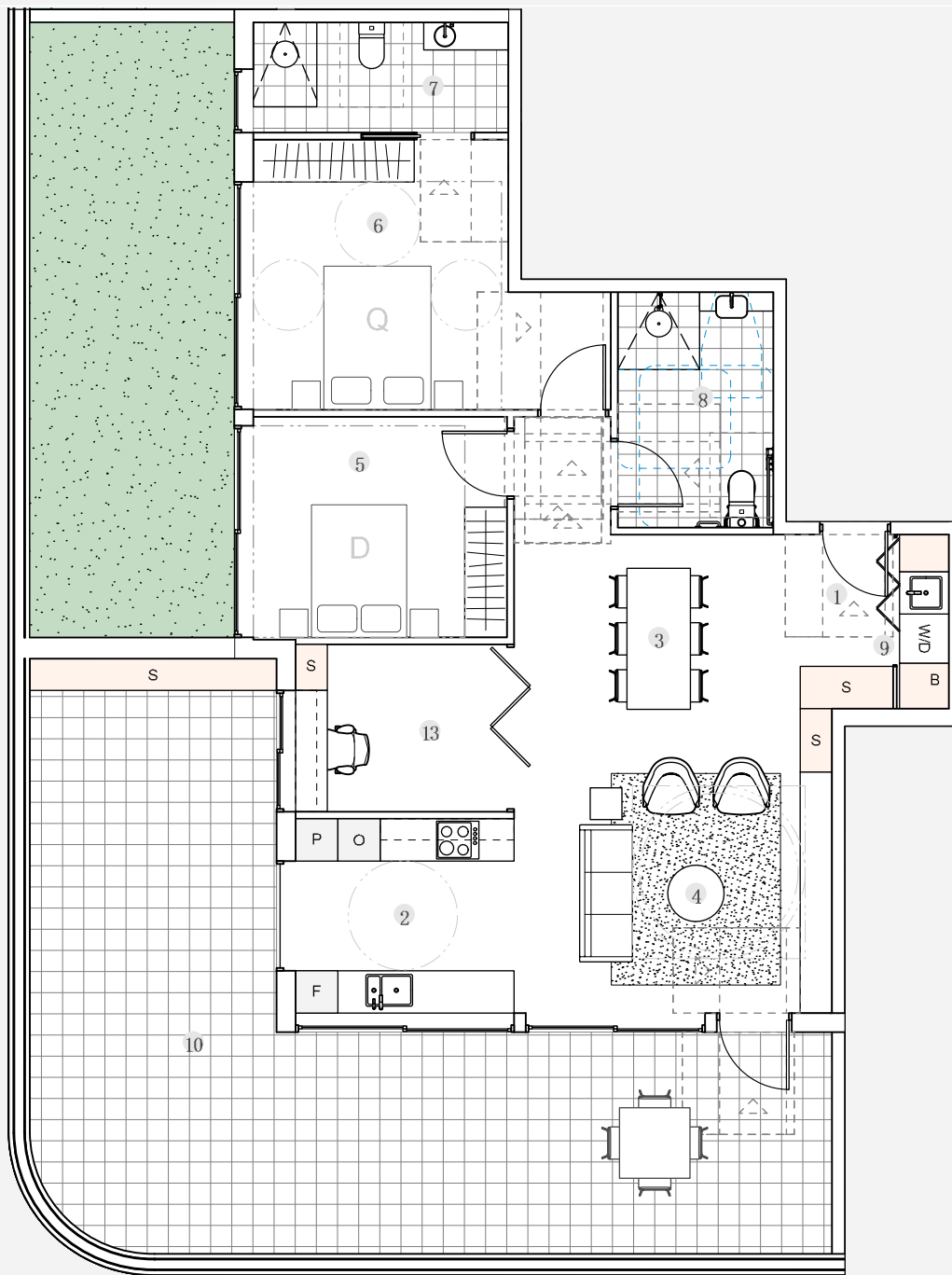
FLOOR PLATE



2 BEDROOM UNIT

CLUB BUILDING 12

FLOOR PLAN - TYPE R
SCALE 1:100 @ A4



LEGEND

1 ENTRY	7 ENSUITE	F REFRIGERATOR	WD WASHER /DRYER
2 KITCHEN	8 BATH	FR FRIDGE	B BROOM
3 DINING	9 LAUNDRY	FZ FREEZER	S STORAGE
4 LIVING	10 DECK / BALCONY	P PANTRY	R ROBE
5 BED	11 PRIVATE OPEN SPACE	D DISHWASHER	O OVEN
6 MASTER BED	12 WALK IN ROBE	L LAUNDRY	
	13 STUDY		

scale at A4 1:100
0m 500mm 1m 2.5m

DISCLAIMER: FORESTVILLE RES, CLUB AND QUATTRO ARCHITECTURE DO NOT GUARANTEE, WARRANT OR REPRESENT THAT THE INFORMATION CONTAINED IN THIS ADVERTISEMENT AND TARGETING DOCUMENT IS CORRECT. ANY INTERESTED PARTIES SHOULD MAKE THEIR OWN ENQUIRIES AS TO THE ACCURACY OF THE INFORMATION. WE EXCLUDE ALL IMPLIED OR IMPLIED TERMS, CONDITIONS AND WARRANTIES ARISING OUT OF THIS DOCUMENT AND ANY LIABILITY FOR THE LOSS OR DAMAGE ARISING THEREFROM. THIS LAYOUT MAY BE SUBJECT TO VARIATIONS AND CHANGES TO SUIT FINANCIAL, WORKING DRAWINGS AND GRID LAYOUT. A PARTMENT AREA HAS BEEN CALCULATED USING EPSDD GL DELINES AREA VESASL RED PROV CENTRE LINE OF PARTY WALLS, CUTS DE FACE OF COMMON AREA WALLS AND TO THE CUTS DE FACE OF EXTERNAL WALLS.

RETIREMENT LIVING

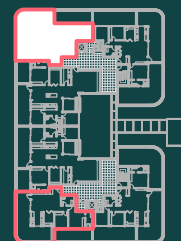


LEVEL 2

2 | 2 | 1 | 1

AREA INTERNAL 96m² | BALCONY 52m²

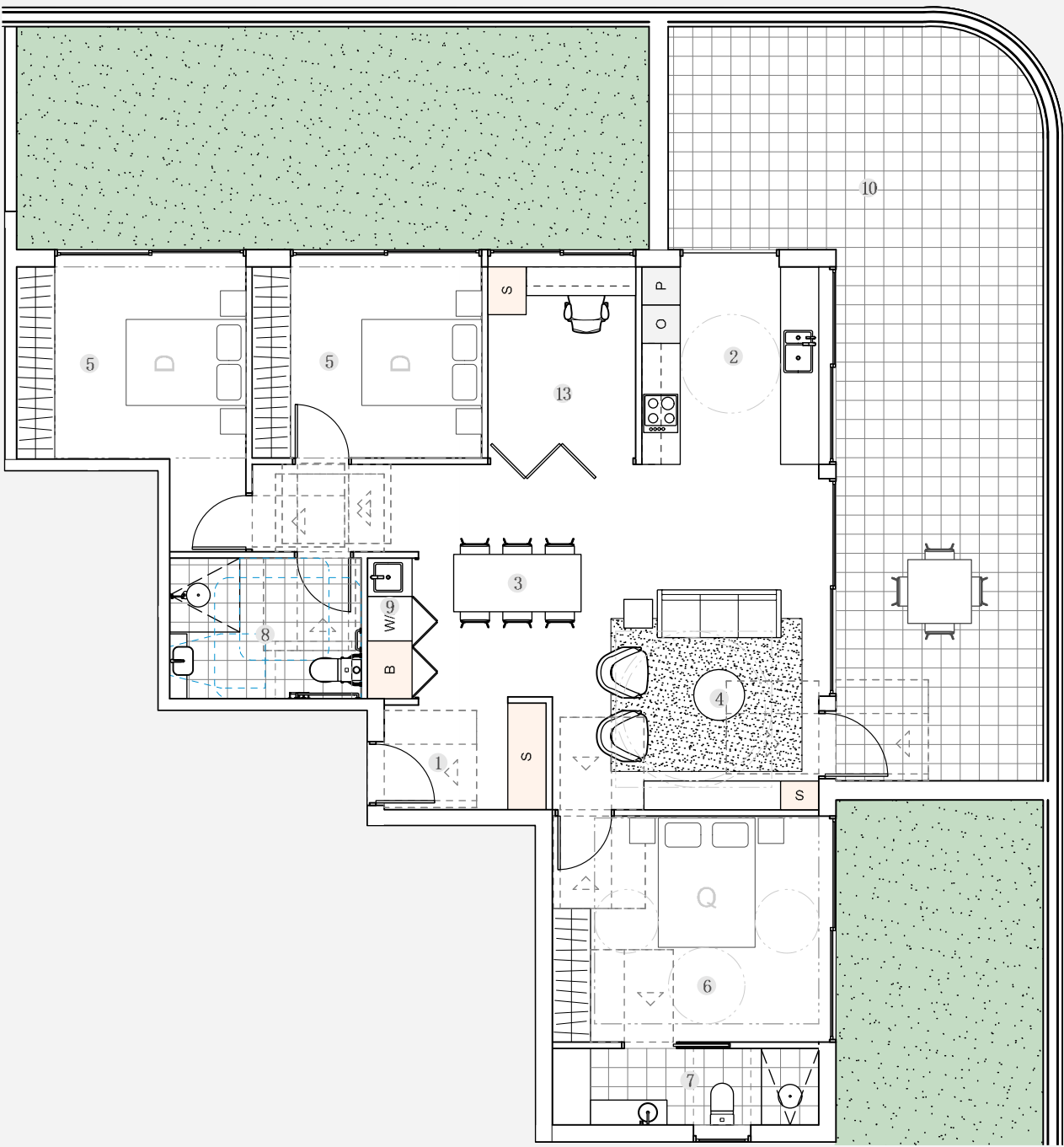
UNITS | C-L2.04 | MIRROR C-L2.01



FLOOR PLATE



FLOOR PLAN - TYPE S
SCALE 1:100 @ A4



LEGEND

- | | | | |
|--------------|-----------------------|----------------|------------------|
| 1 ENTRY | 7 ENSUITE | F REFRIGERATOR | WD WASHER /DRYER |
| 2 KITCHEN | 8 BATH | FR FRIDGE | B BROOM |
| 3 DINING | 9 LAUNDRY | FZ FREEZER | S STORAGE |
| 4 LIVING | 10 DECK / BALCONY | P PANTRY | R ROBE |
| 5 BED | 11 PRIVATE OPEN SPACE | D DISHWASHER | O OVEN |
| 6 MASTER BED | 12 WALK IN ROBE | L LAUNDRY | |
| | 13 STUDY | | |

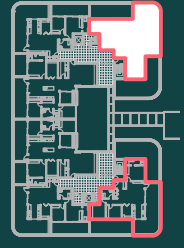
scale at A4 1:100
0m 500mm 1m 2.5m

DISCLAIMER: FORESTVILLE RES, CLUB AND QUATTRO ARCHITECTURE DO NOT GUARANTEE, WARRANT OR REPRESENT THAT THE INFORMATION CONTAINED IN THIS ADVERTISEMENT AND MARKET DOCUMENTS IS CORRECT. ANY INTERESTED PARTIES SHOULD MAKE THEIR OWN ENQUIRIES AS TO THE ACCURACY OF THE INFORMATION. WE EXCLUDE ALL IMPLIED OR IMPLIED TERMS, CONDITIONS AND WARRANTIES ARISING OUT OF THIS DOCUMENT AND ANY LIABILITY FOR THE LOSS OR DAMAGE ARISING THEREFROM. THIS LAYOUT MAY BE SUBJECT TO VARIATIONS AND CHANGES TO SUIT FINANCIAL, WORKING DRAWINGS AND GRID LAYOUT. APARTMENT AREA HAS BEEN CALCULATED USING EPSCOD GUIDELINES. AREA VESTIBULE PROVIDED FROM CENTRE LINE OF PARTY WALLS, OUTSIDE FACE OF COMMON AREA WALLS AND TO THE OUTSIDE FACE OF EXTERNAL WALLS.

RETIREMENT LIVING



LEVEL 2
 3 | 2 | 2 | 1
 AREA INTERNAL 109m² | BALCONY 47m²
 UNITS | C-L2.03 | MIRROR C-L2.02

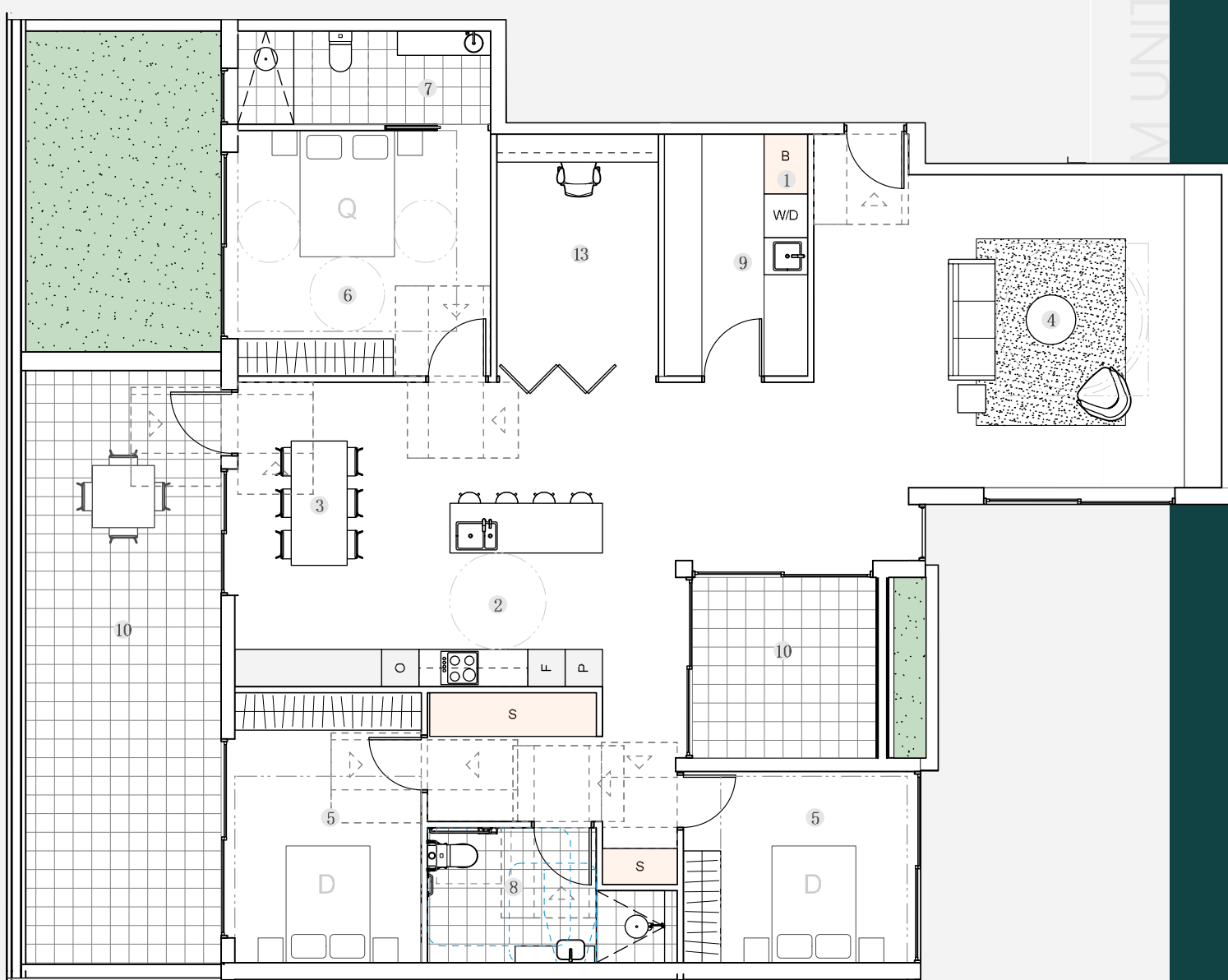


FLOOR PLATE



MUNIT

CLUB BUILDING 12



LEGEND

- | | | | |
|--------------|-----------------------|----------------|-------------------|
| 1 ENTRY | 7 ENSUITE | F REFRIGERATOR | W/D WASHER /DRYER |
| 2 KITCHEN | 8 BATH | FR FRIDGE | B BROOM |
| 3 DINING | 9 LAUNDRY | FZ FREEZER | S STORAGE |
| 4 LIVING | 10 DECK / BALCONY | P PANTRY | R ROBE |
| 5 BED | 11 PRIVATE OPEN SPACE | D DISHWASHER | O OVEN |
| 6 MASTER BED | 12 WALK IN ROBE | L LAUNDRY | |
| | 13 STUDY | | |

scale at A4 1:100
 0m 500mm 1m 2.5m

DISCLAIMER: FORESTVILLE RES, CLUB AND QUATTRO ARCHITECTURE DO NOT GUARANTEE, WARRANT OR REPRESENT THAT THE INFORMATION CONTAINED IN THIS ADVERTISEMENT AND VARGETING DOCUMENT IS CORRECT. ANY INTERESTED PARTIES SHOULD MAKE THEIR OWN ENQUIRIES AS TO THE ACCURACY OF THE INFORMATION. WE EXCLUDE ALL IMPLIED OR IMPLIED TERMS, CONDITIONS AND WARRANTIES ARISING OUT OF THIS DOCUMENT AND ANY LIABILITY FOR THE LOSS OR DAMAGE ARISING THEREFROM. THIS LAYOUT MAY BE SUBJECT TO VARIATIONS AND CHANGES TO SUIT FINAL WORKING DRAWINGS AND GRID LAYOUT. APARTMENT AREA HAS BEEN CALCULATED USING EPSDD GL DELINES AREA VESASURED FROM CENTRE LINE OF PARTY WALLS, OUTSIDE FACE OF COMMON AREA WALLS AND TO THE OUTSIDE FACE OF EXTERNAL WALLS.

RETIREMENT LIVING

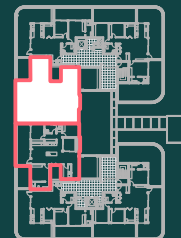


LEVEL 2

3 | 2 | 2 | 1

AREA INTERNAL 176m² | BALCONY 39m²

UNITS | C-L2.05 | MIRROR C-L2.06



FLOOR PLATE