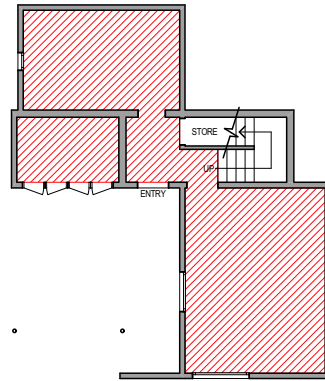
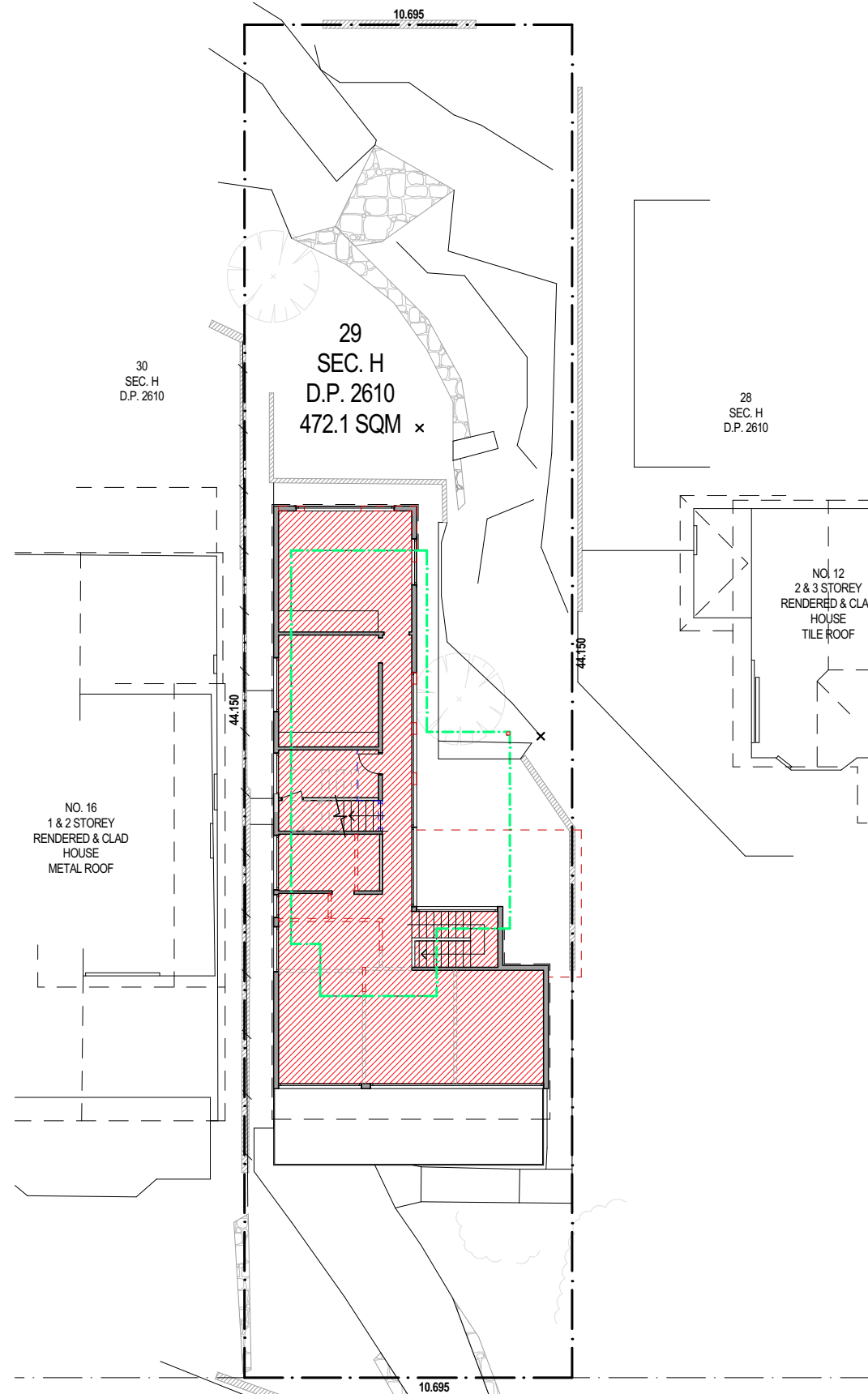


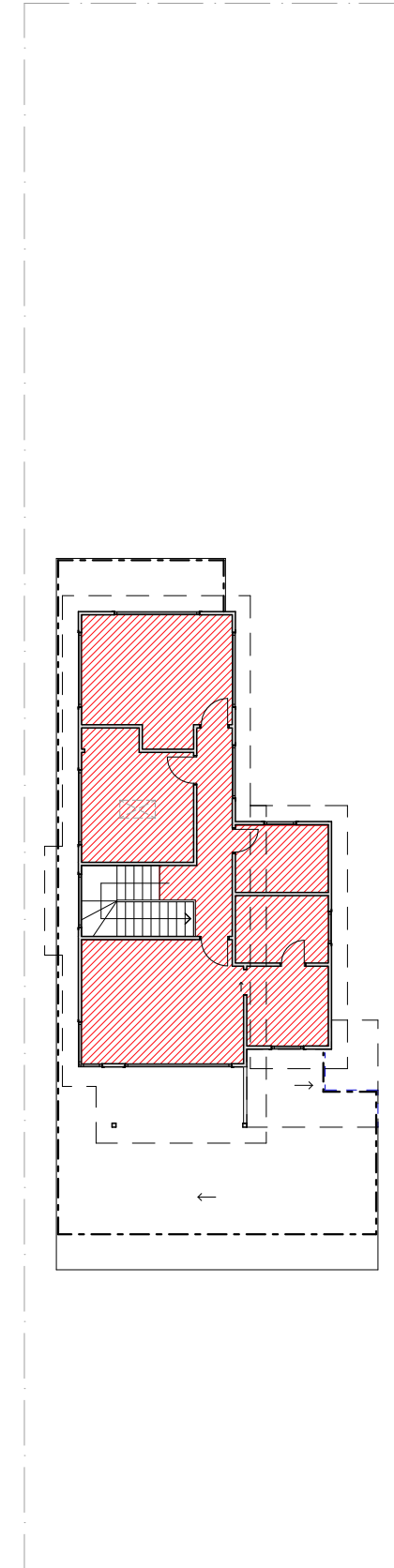
LOWER LEVEL FLOOR PLAN



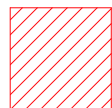
GROUND FLOOR PLAN



PROPOSED FIRST FLOOR PLAN



FLOOR SPACE CALCULATIONS	
SITE AREA	472.1 sqm
MAX FLOOR SPACE - Zone R2 in Area B	0.40 : 1
Manly LEP2013 - CLAUSE 4.4 SUB CLAUSE (2) The maximum floor space ratio for a building on any land is not to exceed the floor space ratio shown for the land on the Floor Space Ratio Map.	
GROSS FLOOR AREA	202.9 sqm
BASEMENT FLOOR	36.3 sqm
GROUND FLOOR AREA	101.6 sqm
FIRST FLOOR AREA	65.0 sqm
PROPOSED FLOOR SPACE RATIO	0.429 : 1



GROSS FLOOR AREA



ADD-STYLE
HOME ADDITIONS
Upstairs Specialists

5/319 CONDOMINE ST MANLY VALE 2093 P: (02) 9907 9055 E: info@addstyle.com.au

Proposed Additions at:
14 Ogilvy Road
CLONTARF NSW 2093

DRAWING TITLE FLOOR SPACE RATIO CALCULATION PLAN
SCALE 1:200 DRAWN BY KH CHECKED BY CW

DRAWING NO. 4059 DA 1

ISSUE B

NO.	REVISION	DATE	BY
B	For Council	16/12/24	KH
A	For Council	10/12/24	KH