



— view east to existing headland vegetation



— existing driveway



— view west to existing front garden area



— existing driveway

Note to be read in conjunction with
Arborist report and GT Architect plans

site images

Landscape DA plan
73 Marine pde Avalon Beach

Issue: A

Andrew Davies
landscape designer

27 Turimetta Street, Mona Vale NSW 2103
andrew.davies@banksiadesigngroup.com.au
abn : 17 986 316 620
www.banksiadesigngroup.com.au 0414 2900 57



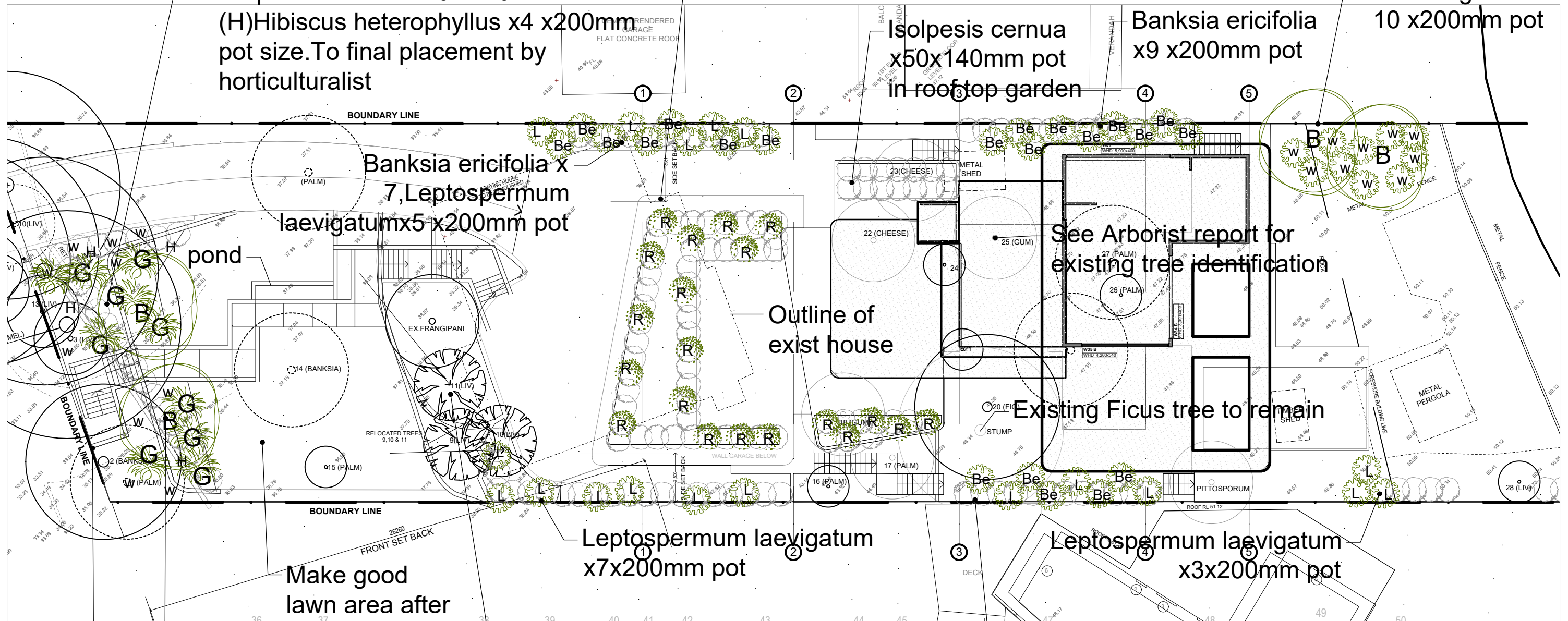
Landscape DA Plan

Drawing: AD/TT	Checked by: AD
Andrew Davies	Job: R02 220108
Date 17.12.21	Issue : A
Scale: NTSC	

New front garden planting:
 (G)Gymea lilly x10x 200mm
 (W)Westringia fruticosa x 20x200mm
 Poa poiformis x 20x 140mm
 Isolpesis cernua x 20x 140mm
 (H)Hibiscus heterophyllus x4 x200mm
 pot size.To final placement by horticulturalist

(R) Raphiolepis oriental pearl x20, Alcanterea sppx5,
 Crassula Blue bird x20, Agave vilmoriniana 5 x200mm pot,
 Rosemary sp ground cover x20, Isolepis cernuax30
 all by 140mm pot in terrace planters

Banksia
 Integrifolia x2 x75ltr
 Westringia fruticosa
 10 x200mm pot



(B) Banksia integrifolia
 2x75ltr

Make good
 lawn area after
 construcion

Transplant 3xLivistonia australis palms with Isolepsis cernuax30,Leptospermum pink cascade x20
 and Correa alba x10 all 140mm pot size to underside of Livistonia and Plumeria plants

Note Generally use Native soil
 mix and Bushtucker Native
 ferterliser or similar.

Note to be read in conjunction with
 Arborist report and GT Architect plans

Master Plan

Landscape DA plan
 73 Marine pde Avalon Beach

Issue: A



Andrew Davies
 landscape designer

27 Turimetta Street, Mona Vale NSW 2103
 andrew.davies@banksiadesigngroup.com.au
 abn : 17 986 316 620
 www.banksiadesigngroup.com.au 0414 2900 57



Landscape DA Plan

Drawing: AD/TT	Checked by: AD
Andrew Davies	Job:R02 220108
Date: 17.12.21	Issue: A
Scale: 1to200 A3	
Approx	

2

3

LANDSCAPE GENERAL
SPECIFICATION AND NOTES

All landscape works and material supply, to be in accordance with AS 4000, LCA guidelines and Occupational Health & Safety standards.

All landscape works to comply with relevant Australian Standards and relevant Building Codes of Australia

All dimensions and locations to be checked on site and confirmed by landscape site supervisor before commencement of works

Do not scale from drawings. Dimensions take preference

Plant schedule and quantities to be used as guide only and to be confirmed by contractor before final purchase of plants

Final plant positions to be determined on site (by Landscape Supervisor).

DESIGN LIABILITY NOTE: No liability is accepted by these plans. Contractors are required to check ALL construction facts, figures and relevant information pertaining to the soft and hard scape works to be performed. Should anomalies occur, the designer or a representative of Andrew Davies/Banksia Design Group must be contacted and given due notice and sufficient documentation and, if required, due compensation to allow for adjustment/s to plans, documentation etc

REMOVAL OF NOXIOUS WEEDS: As a duty of care exists for all contractors: if a noxious weed exists onsite it should be removed after discussion with the owner or site supervisor.

ENVIRONMENTAL MANAGEMENT AND SEDIMENT CONTROL: All Landscape works to adhere with Environmental Legislation outlined in the *Protection of the environment operations act 1997*, by the EPA NSW.

It is highly recommended to use Dial Before You Dig services – contact for information at www.dialbeforeyoudig.com.au or call 1100.

TREES: All trees to be staked: use 2 x hardwood 50x50mm stakes and hessian webbing. See detail

TURF: 1. Install turf rolls diagonal to the fall of the land. Roll turf following installation, and water as required . Use soft leaf Buffalo sp

2. 50 - 70mm topsoil underlay to be used in ground preparation .Note check ph after construction and before laying turf, adjust as required for optimum plant growth

SOIL:

1. Contractor is to check soil pH levels, two weeks prior to planting, and allow for reasonable adjustments, using lime or similar to ensure plant viability

2. Break up existing ground surface using mattock, rotary hoe or tractor tine as required

3. Topsoil sandy loam 50mm depth to turf areas.

4. Where necessary mound soil to assist in soil drainage to avoid root rot and poor plant growth

5. Incorporate ¼ tonne organic soil mix into holes where trees are planted, using recycled leaf litter as mulch

6. Soil Quality to be Australian Native Landscape Standard

7. Supply and Install 'Garden Mix' to all garden beds incorporated into the top 300mm of existing site profile. Note use rotary hoe as required do not just place on top of ground

MULCH: Mulch to be installed to all planter beds to a depth of 75mm. Mulch type to be Recycled Leaf Litter ideally from local tree company based on more native plants than general exotics.

EDGING: See plan for locations. Top edge higher than lawn to allow garden beds to be aerated & mounded

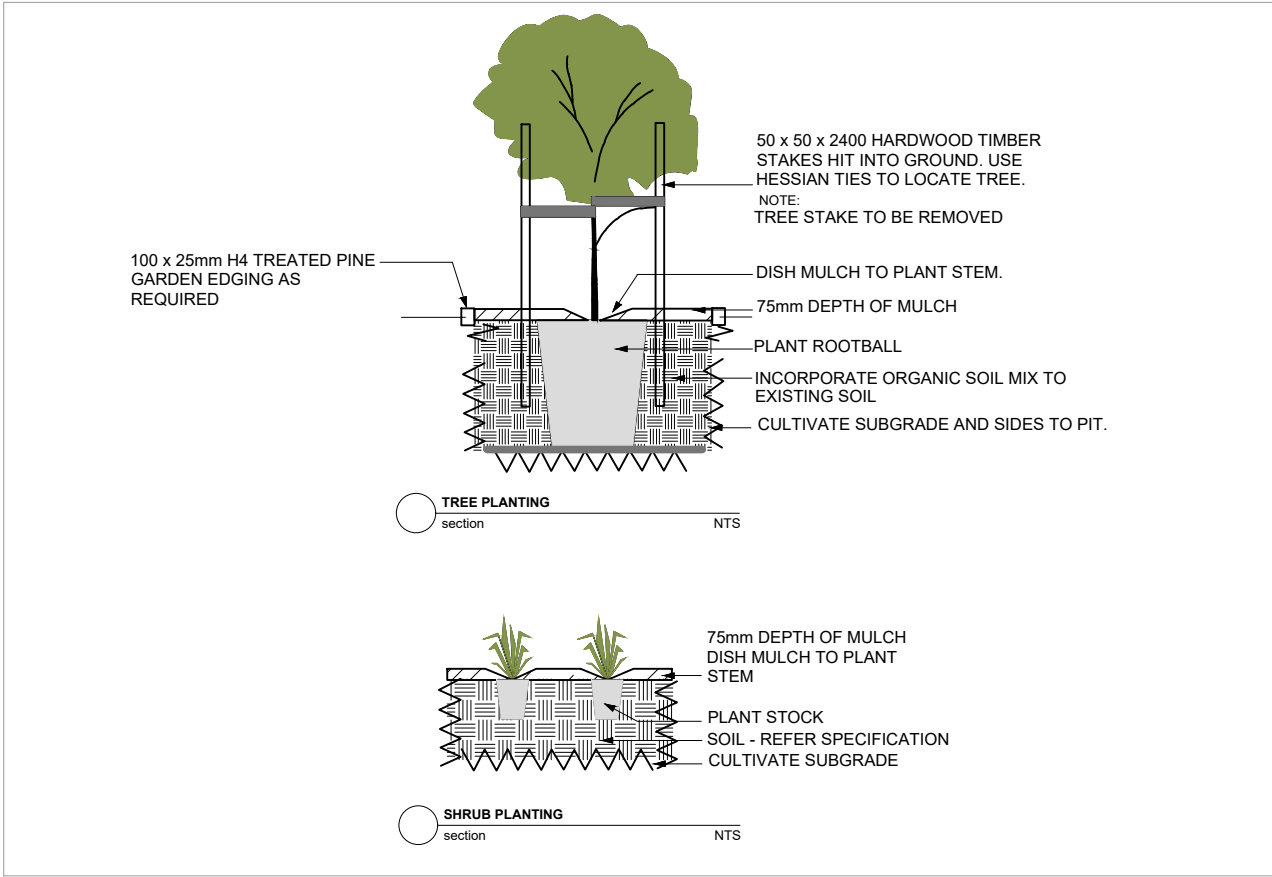
DRAINAGE: see Hydraulic Engineer drawings

LIGHTING: to future plans TBA

MAINTENANCE: New plants to receive regular deep irrigation for a minimum 12 weeks establishment period. Seasonal pruning, fertilising and pest and disease checks to be carried out. Advice by qualified horticulturalist recommended

IRRIGATION: Drip irrigation TBA

Botanical Name	Common Name	Pot size mm	Dimensions WxH in metres	Qty .
<i>Banksia integrifolia</i>	Coastal Banksia	75ltr	15 to 20 plus	4
<i>Agave vilmoriniana</i>	Octopus agave	200	1.5x1.5	5
<i>Alcanterea spp</i>	Large Bromeliad	200	1.2x1.5	5
<i>Banksia ericifolia</i>	Banksia	200	3x3	21
<i>Correa alba</i>	White Correa	140	.7x.7	10
<i>Crassula Blue bird</i>	Crassula	200	.7x1.2	20
<i>Dortanthes excelsa</i>	Gymea lilly	200	3x2.5	10
<i>Hibiscus heterophyllus</i>	Native hibiscus	200	3to 4 x4 plus	4
<i>Isolopsis cernua</i>	Knobby club rush	140	.5x.5	130
<i>Leptospermum laevigatum</i>	Coastal tea tree	200	3x3	20
<i>Leptospermum Pinck Cascade</i>	Compact Leptospermum	140	.7x1.2	20
<i>Poa poiformia</i>	Poa grass	140	.6x.6	20
<i>Raphiolepis Oreiental Pearl</i>	Indian Hawthorn	200	.8x1.2	20
<i>Rosemary prostatus</i>	Creeping rosemary	140	.8x.3	20
<i>Westringia fruticosa</i>	Coastal rosemary	200	1.5x1.2	30



Note to be read in conjunction with
Arborist report and GT Architect plans

Plant schedule and notes

Landscape DA plan
73 Marine pde Newport

Issue: A

Andrew Davies
landscape designer

27 Turimetta Street, Mona Vale NSW 2103
andrew.davies@banksiadesigngroup.com.au
abn : 17 986 316 620
www.banksiadesigngroup.com.au 0414 2900 57



Landscape DA Plan

Drawing: AD/TT	Checked by: AD
Andrew Davies	Job: R02 220108
Date: 17.12.21	Issue: A
Scale: NTSC	

3

3