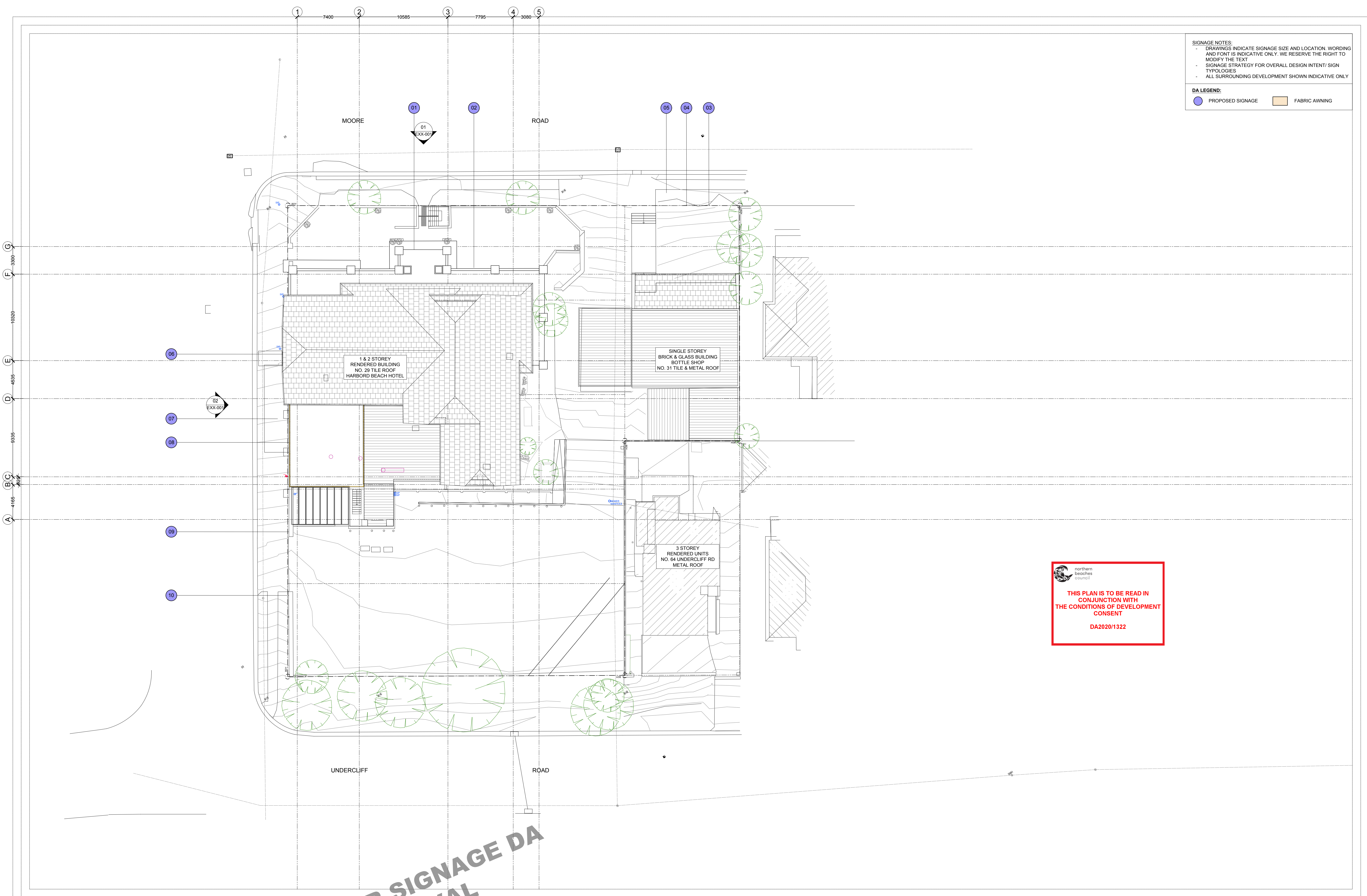


SIGNAGE NOTES:

- DRAWINGS INDICATE SIGNAGE SIZE AND LOCATION. WORDING AND FONT IS INDICATIVE ONLY. WE RESERVE THE RIGHT TO MODIFY THE TEXT
- SIGNAGE STRATEGY FOR OVERALL DESIGN INTENT/ SIGN TYPOLOGIES
- ALL SURROUNDING DEVELOPMENT SHOWN INDICATIVE ONLY

DA LEGEND:

- PROPOSED SIGNAGE
- FABRIC AWNING





THIS PLAN IS TO BE READ IN CONJUNCTION WITH THE CONDITIONS OF DEVELOPMENT CONSENT

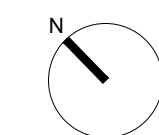
 DA2020/1322

FOR SIGNAGE DA APPROVAL

DATE 18.09.20 REVISION A ISSUE REASON FOR SIGNAGE DA APPROVAL

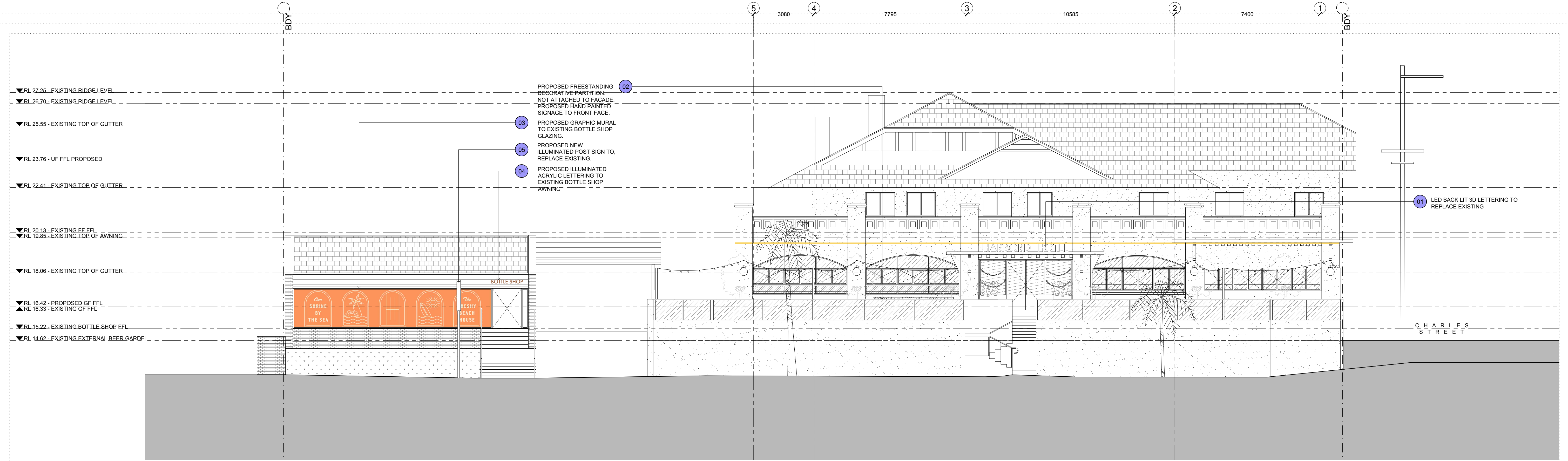

 CLIENT: GLENN PIPER
 MERIDAN AUSTRALIA

PROJECT: FRESHWATER HOTEL



DRAWING: PROPOSED PLAN
 CHECK ALL DIMENSIONS ON SITE PRIOR TO THE COMMENCEMENT OF WORK
 USE FIGURED DIMENSIONS ONLY DO NOT SCALE
 COMPLY WITH ALL RELEVANT AUTHORITIES REQUIREMENTS
 COMPLY WITH BUILDING CODE OF AUSTRALIA STANDARDS
 COPYRIGHT IN ALL DOCUMENTS AND DRAWINGS PREPARED BY ALEXANDER & CO.

PROJECT NO. 0487
 SCALE@A1 1:200 SCALE@A3 1:400
 DWG NO. DA-DXX-001
 DRAWN MD
 CHECKED SH
 ISSUE A

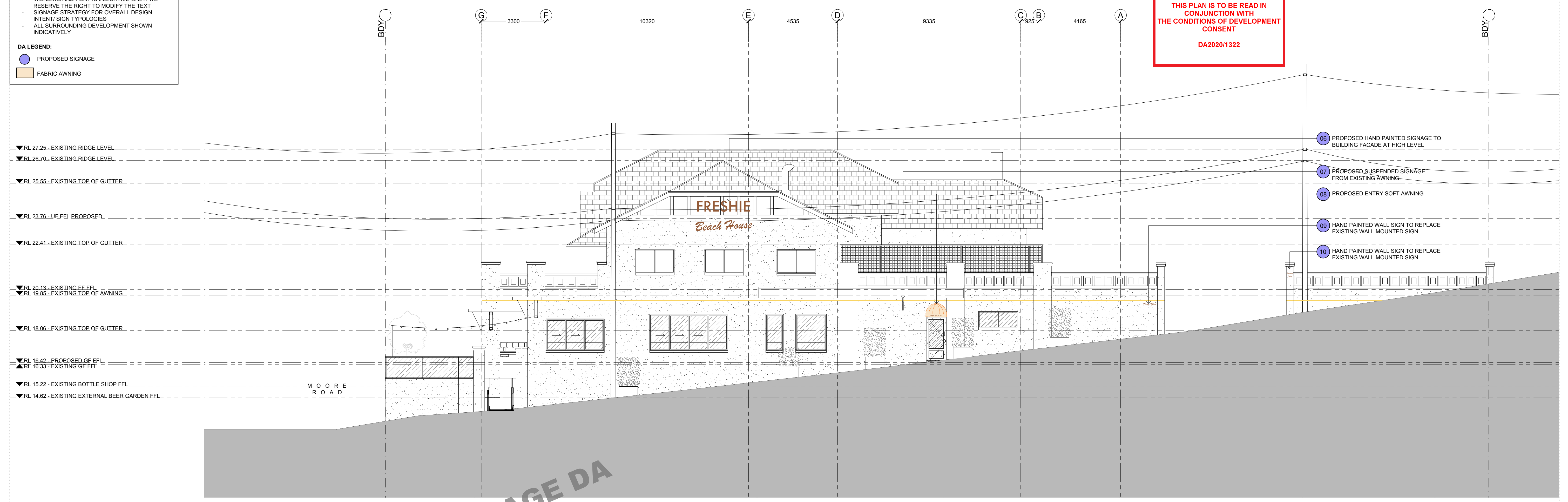


SIGNAGE NOTES:
 - DRAWINGS INDICATE SIGNAGE SIZE AND LOCATION. WORDING AND FONT IS INDICATIVE ONLY. WE RESERVE THE RIGHT TO MODIFY THE TEXT.
 - SIGNAGE STRATEGY FOR OVERALL DESIGN INTENT/ SIGN TYPOLOGIES.
 - ALL SURROUNDING DEVELOPMENT SHOWN INDICATIVELY.

DA LEGEND:
 ● PROPOSED SIGNAGE
 ■ FABRIC AWNING

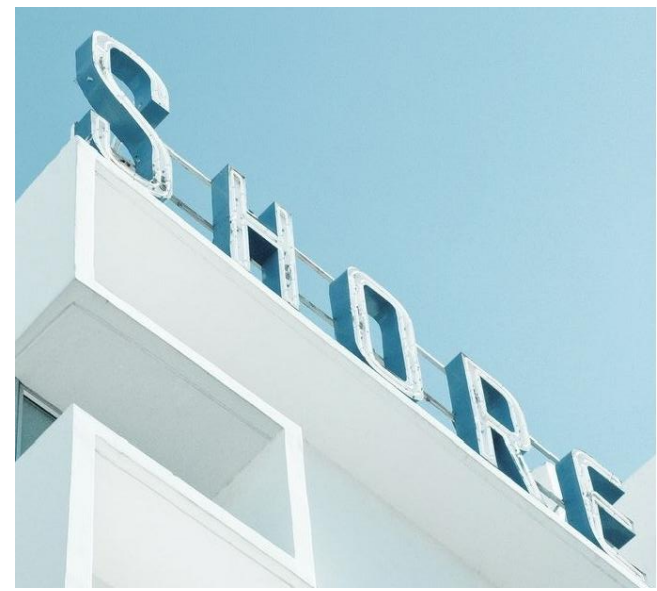
01 PROPOSED NORTHERN ELEVATION - MOORE ROAD
 1:100@A1/1:200@A3

northern beaches council
THIS PLAN IS TO BE READ IN CONJUNCTION WITH THE CONDITIONS OF DEVELOPMENT CONSENT
 DA2020/1322

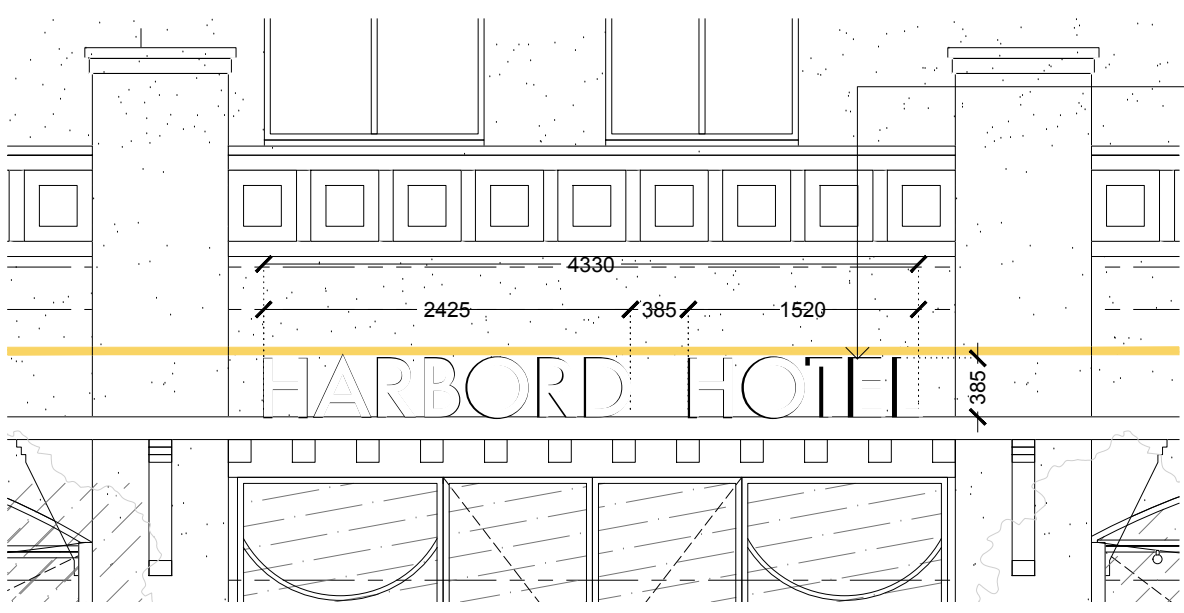


02 PROPOSED WESTERN ELEVATION - CHARLES STREET
 1:100@A1/1:200@A3

FOR SIGNAGE DA APPROVAL



SIGN 01 - REFERENCE IMAGE



01 PROPOSED 3D ILLUMINATED AWNING SIGN
1:50@A1/1:100@A3

STYLE: 3D LETTERING WITH BACK ILLUMINATION. SIGN TO BE CONSISTENT WITH HERITAGE CHARACTER OF THE HOTEL.

MATERIALS: 3D METAL CUTOUT LETTERS. PAINT FINISH CONCEALED NON-INVASIVE MECHANICAL FIXING TO CONCRETE AWNING

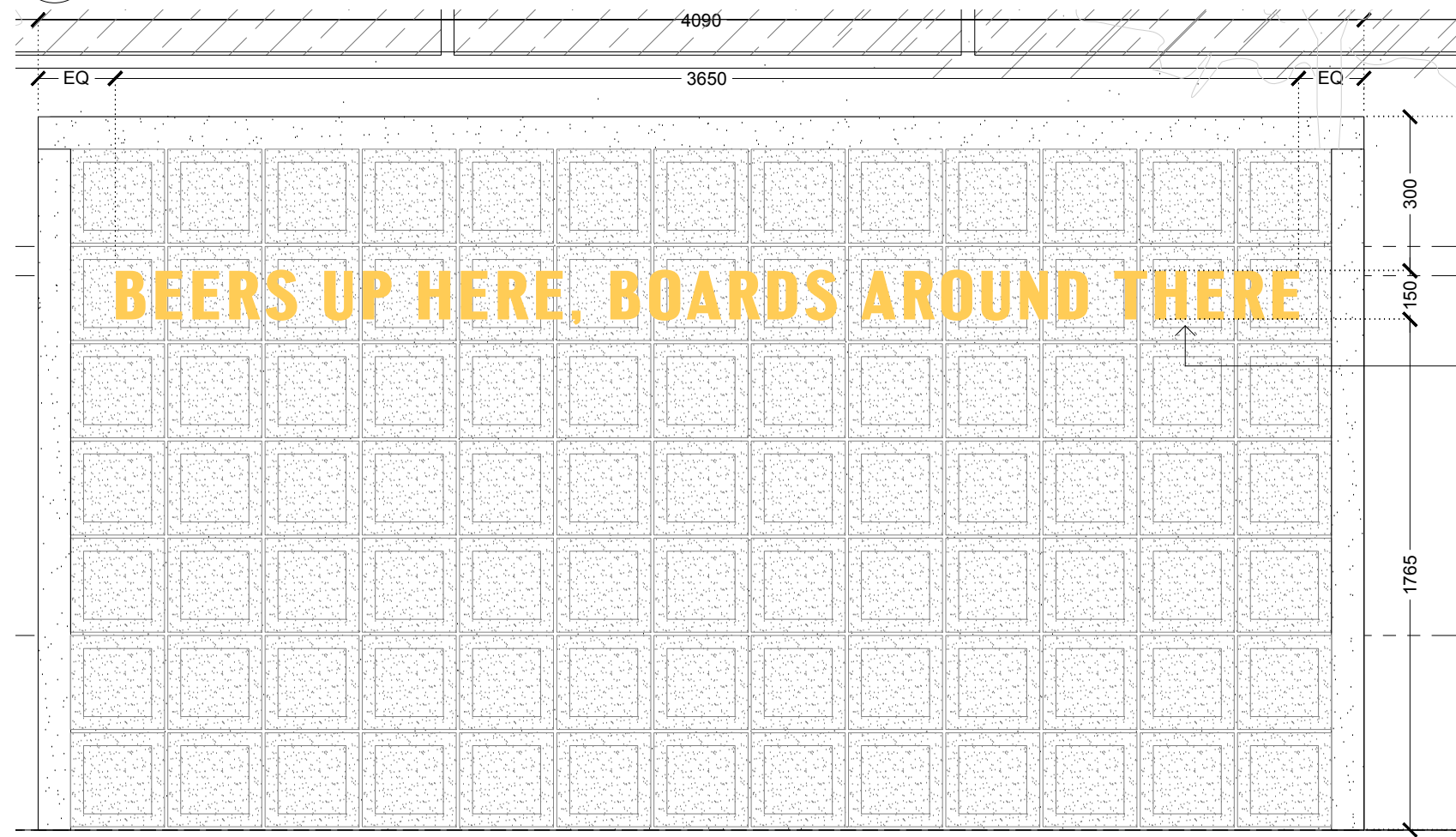
CONTENT: BUSINESS IDENTIFICATION

LIGHTING: LED BACK-LIT. LED STRIP TO BE FIXED TO CONCRETE AWNING UNDER LETTERING.

COLOUR: WHITE INTERIOR, 'SUNBATHE' EXTERIOR. REFER LEGEND FOR COLOURWAY INFORMATION.



SIGN 02 - REFERENCE IMAGE



02 PROPOSED HAND PAINTED COURTYARD SIGN
1:20@A1/1:40@A3

FREESTANDING DECORATIVE PARTITION. NOT ATTACHED TO FACADE.
STYLE: FLAT SIGN. HAND PAINTED LETTERING.

MATERIALS: HAND PAINTED

CONTENT: BRANDING

LIGHTING: N/A

COLOUR:

- SIGNAGE NOTES:**
- DRAWINGS INDICATE SIGNAGE SIZE AND LOCATION. WORDING AND FONT IS INDICATIVE ONLY. WE RESERVE THE RIGHT TO MODIFY THE TEXT
 - SIGNAGE STRATEGY FOR OVERALL DESIGN INTENT/ SIGN TYPOLOGIES
 - ALL SURROUNDING DEVELOPMENT SHOWN INDICATIVELY
- DA LEGEND:**
- PROPOSED SIGNAGE
 - FABRIC AWNING

COLOUR PALETTE

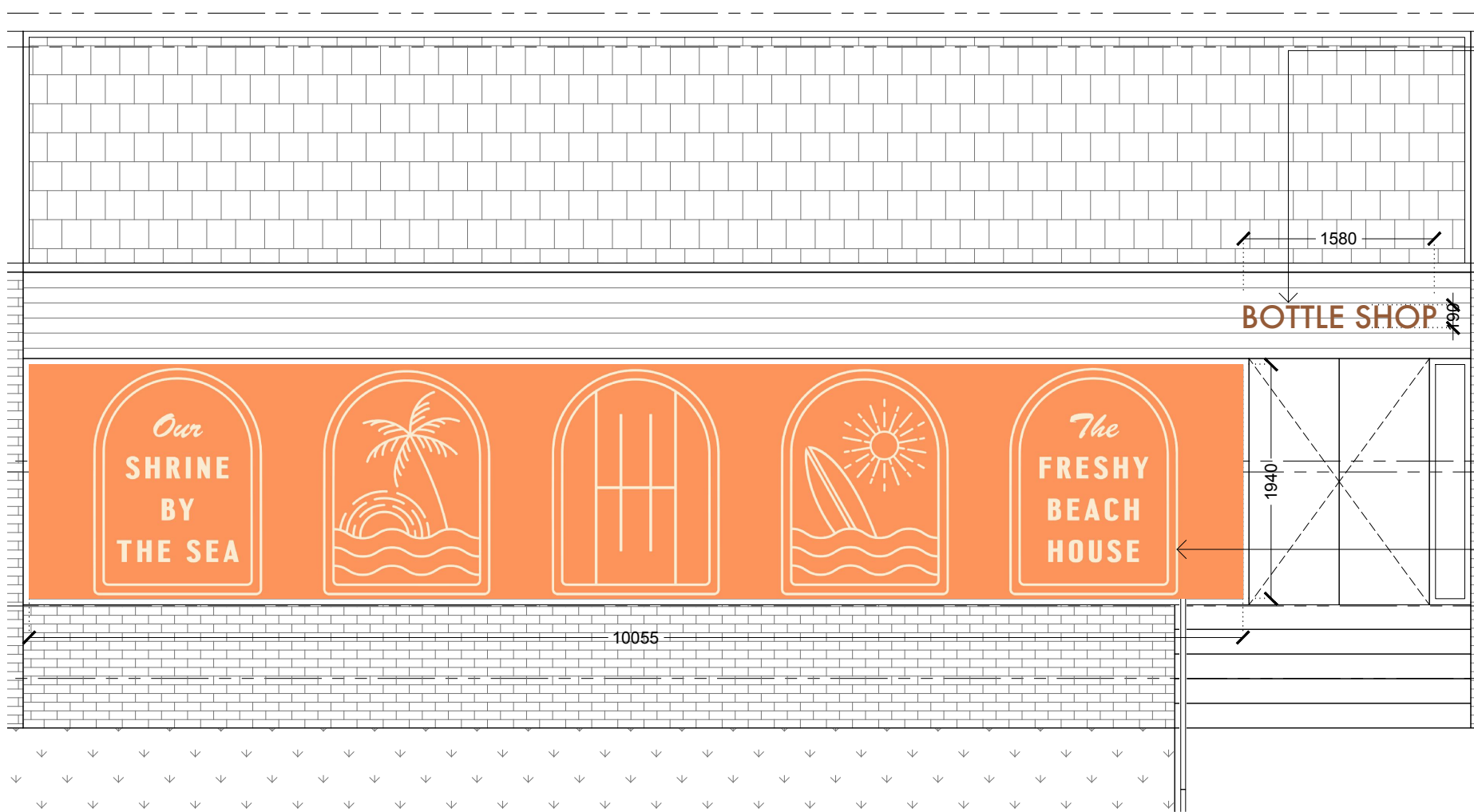
MONARO	SUNBATHE	SABARDI	WAX
PAINTCODE 2201 U CMYK 22 44 83 D RGS 148 97 34 HEX #F0E68C	PAINTCODE 141 U CMYK 1 84 91 U RGS 242 131 32 HEX #F0E68C	PAINTCODE 121 U CMYK 0 20 77 U RGS 253 204 84 HEX #FFC000	PAINTCODE 488 U CMYK 0 20 34 U RGS 253 210 183 HEX #FFDAB9
STUCCO	POWDER	SEAWED	
PAINTCODE 9100 U CMYK 2 9 21 U RGS 240 200 200 HEX #F0E68C	PAINTCODE 1001 U CMYK 47 10 10 U RGS 133 141 141 HEX #E6B0AA	PAINTCODE 1000 U CMYK 43 20 76 U RGS 127 124 87 HEX #E6B0AA	

HARBORD HOTEL

northern beaches council
THIS PLAN IS TO BE READ IN CONJUNCTION WITH THE CONDITIONS OF DEVELOPMENT CONSENT
DA2020/1322



SIGN 03 - REFERENCE IMAGE



03/04 PROPOSED HAND PAINTED GRAPHIC MURAL AND BOTTLE SHOP SIGN
1:50@A1/1:100@A3

STYLE: INDIVIDUAL FLAT LETTERING TO FACE OF EXISTING AWNING.

MATERIALS: FLAT ACRYLIC CUTOUT LETTERS

CONTENT: WAYFINDING

LIGHTING: N/A

COLOUR: 'MONARO' REFER LEGEND FOR COLOURWAY INFORMATION

STYLE: FLAT DECAL TO EXISTING WINDOW.

MATERIALS: VINYL DECAL

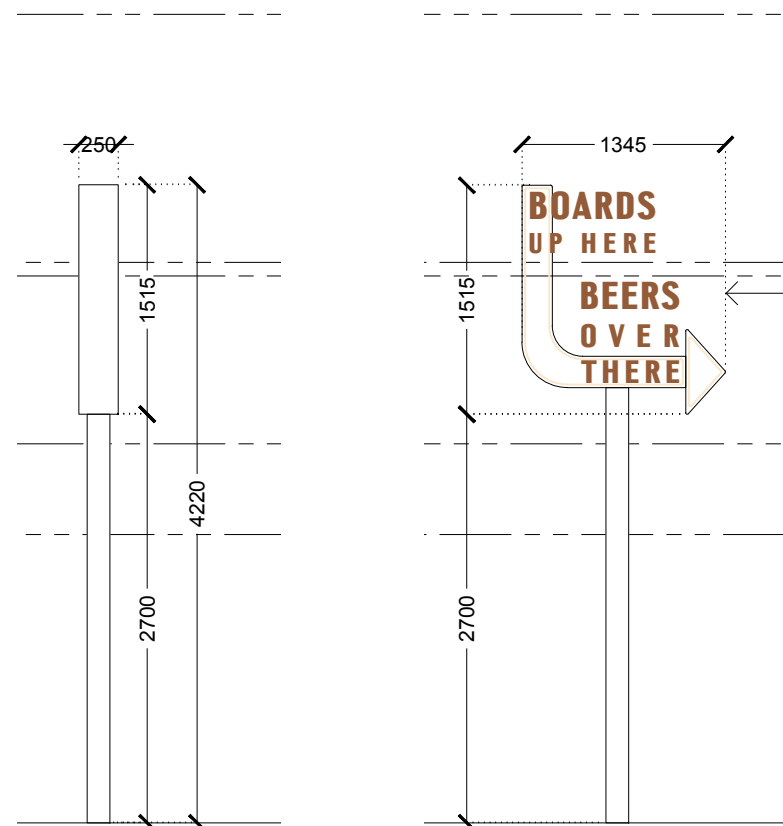
CONTENT: BRANDING

LIGHTING: N/A

COLOUR: 'SUNBATHE' BACKGROUND 'STUCCO' ICONOGRAPHY. REFER LEGEND FOR COLOURWAY INFORMATION



SIGN 05 - REFERENCE IMAGE



05 POST SIGN - SIDE ELEVATION 1:50@A1/1:100@A3
05 POST SIGN - FRONT ELEVATION 1:50@A1/1:100@A3

NEW POST AND SIGN TO REPLACE EXISTING

STYLE: 3D RETRO INDIVIDUAL LETTER SIGN. NEW STEEL POST PAINT FINISH.

MATERIALS: 3D ACRYLIC CUTOUT LETTERS.

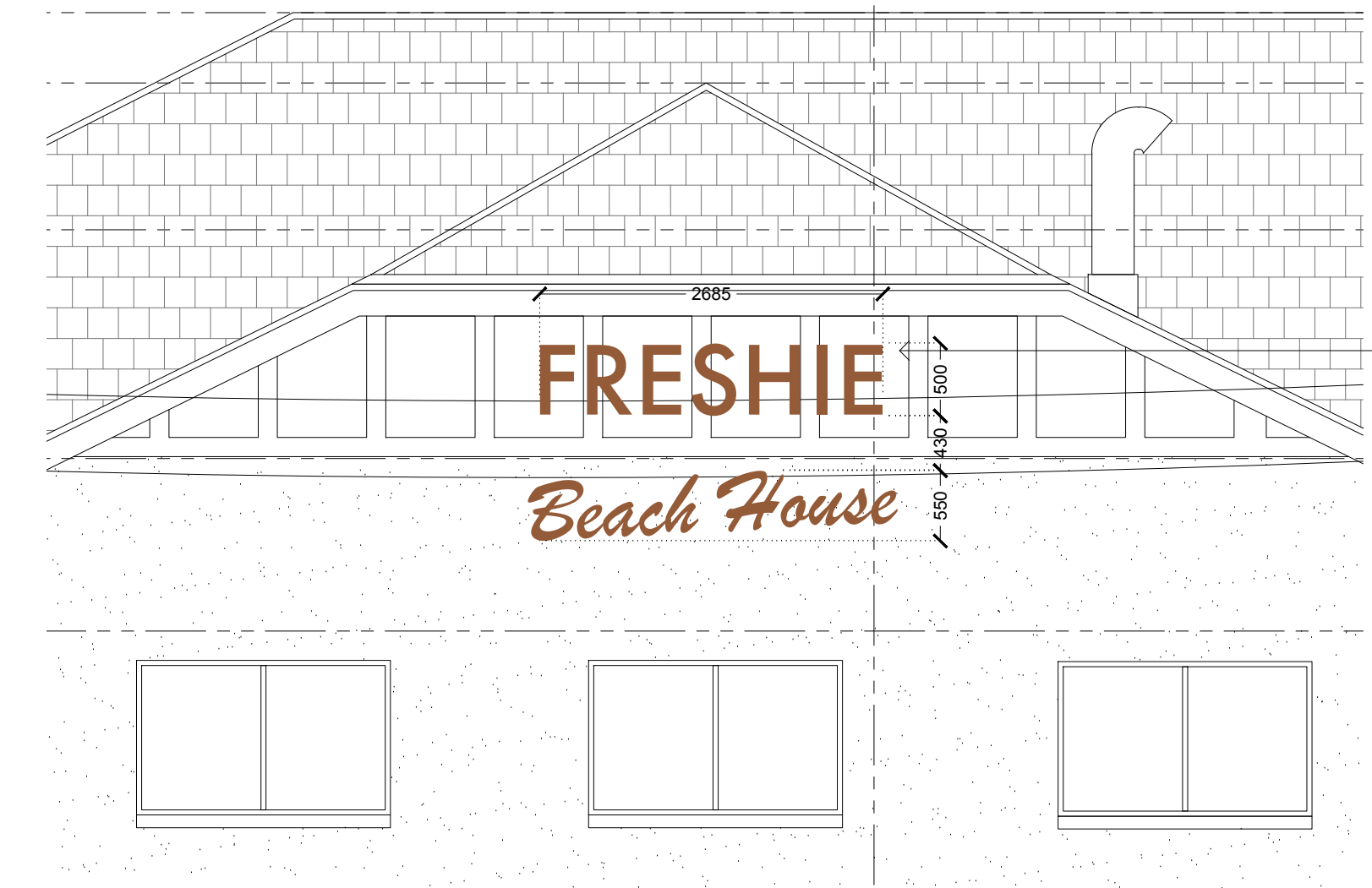
CONTENT: BRANDING / WAYFINDING

LIGHTING: ILLUMINATED FACE

COLOUR: WHITE / MONARO REFER LEGEND FOR COLOURWAY INFORMATION.



SIGN 06 - REFERENCE IMAGE



06 PROPOSED HAND PAINTED FACADE SIGNAGE
1:50@A1/1:100@A3

STYLE: FLAT SIGN. HAND PAINTED LETTERING. SIGN TO BE CONSISTENT WITH HERITAGE CHARACTER OF THE HOTEL.

MATERIALS: HAND PAINTED

CONTENT: BUSINESS IDENTIFICATION

LIGHTING: N/A

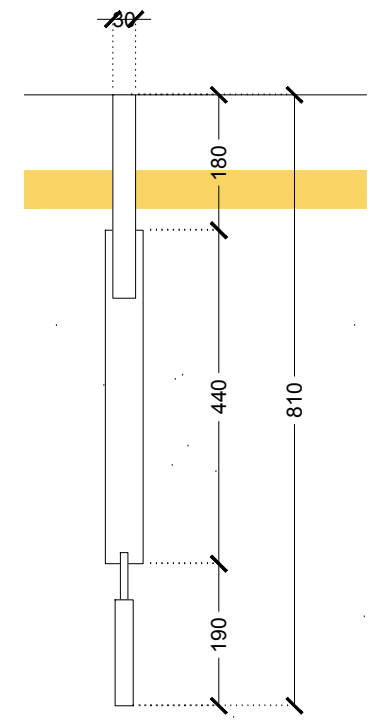
COLOUR: 'MONARO' REFER LEGEND FOR COLOURWAY INFORMATION.

TOTAL AREA OF HAND PAINTED SIGNAGE 350M

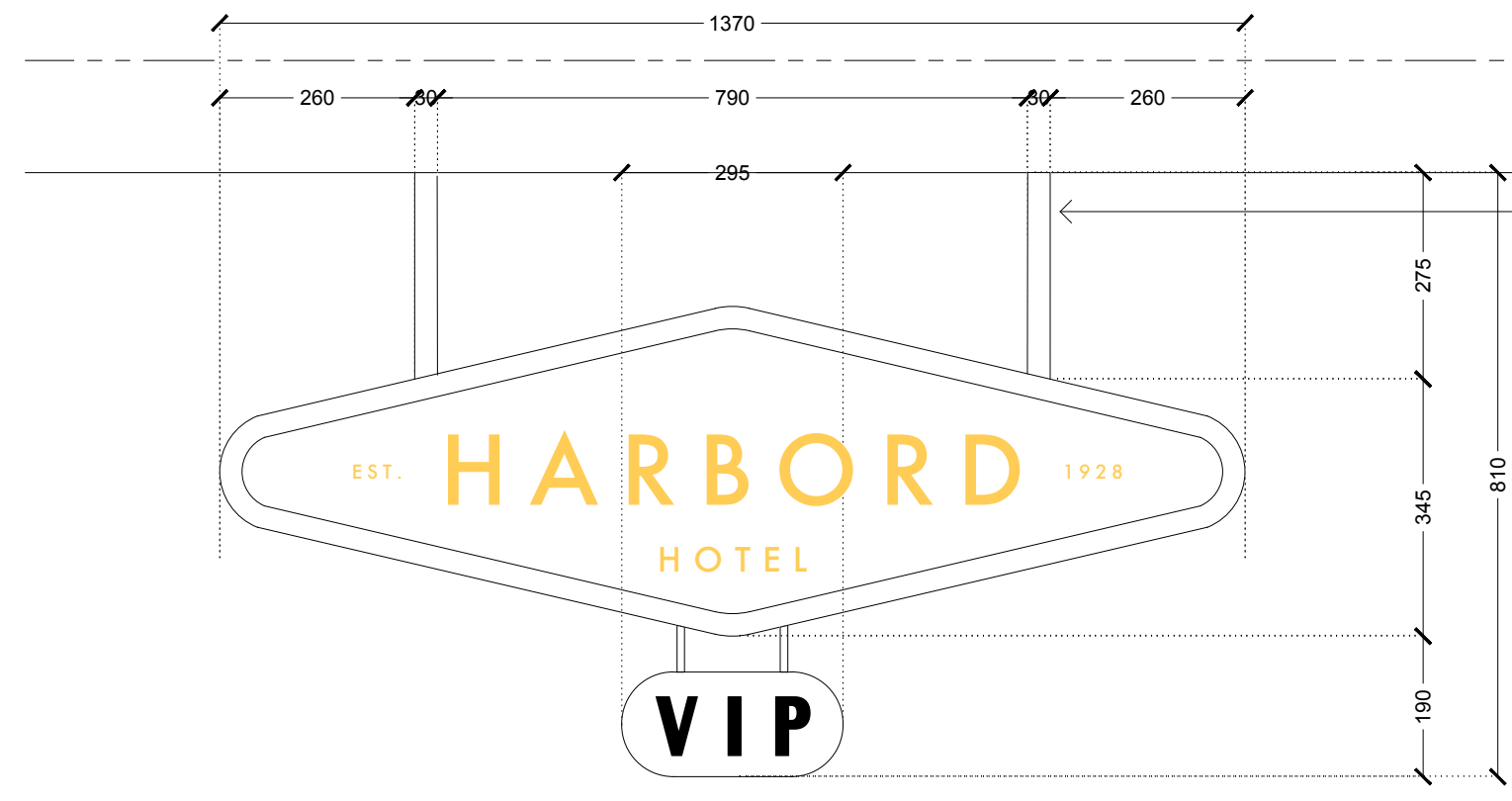
FOR SIGNAGE DA APPROVAL



SIGN 07 - REFERENCE IMAGE

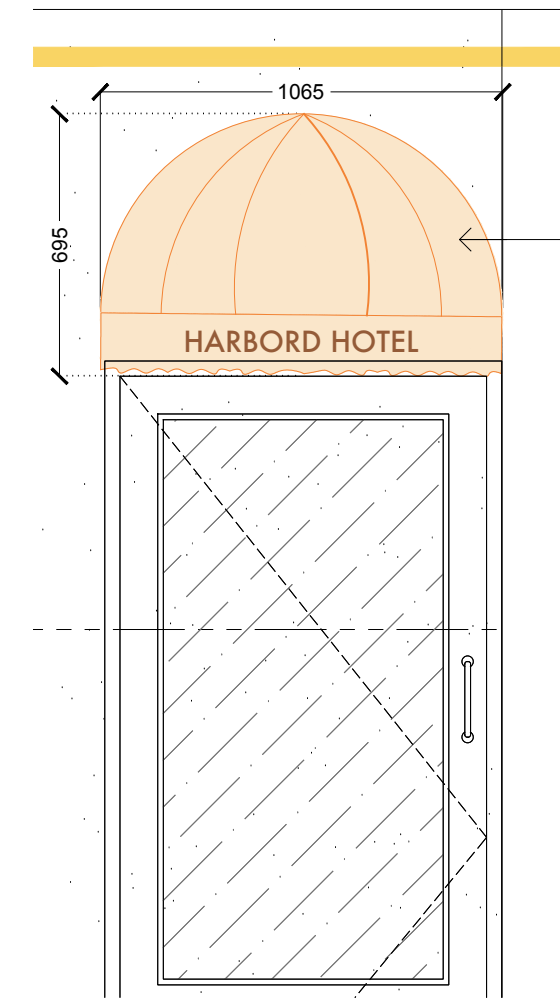


07 PROPOSED AWNING SIGN - SIDE ELEVATION
1:10@A1/1:20@A3



07 PROPOSED AWNING SIGN - FRONT ELEVATION
1:10@A1/1:20@A3

STYLE: SUSPENDED AWNING SIGN WITH LED LIT VIP SIGN BELOW.
MATERIALS: MARINE GRADE STEEL PAINTED FRAME. STEEL LETTERING PAINTED. SUSPENSION ARMS COUNTERSUNK INTO EXISTING AWNING. SUITABLE FOR WIND LOADING AND MARINE ENVIRONMENT.
CONTENT: BUSINESS IDENTIFICATION AND WAYFINDING
LIGHTING: LED ILLUMINATED 'VIP' LETTERING
COLOUR: WHITE / HARBORD LETTERING REFER LEGEND FOR COLOURWAY INFORMATION



08 PROPOSED ENTRY SOFT AWNING
1:20@A1/1:40@A3

STYLE: FABRIC CUPOLA AWNING
MATERIALS: FABRIC
CONTENT: BUSINESS IDENTIFICATION
LIGHTING: N/A
COLOUR: FABRIC COLOURS SHOWN INDICATIVELY

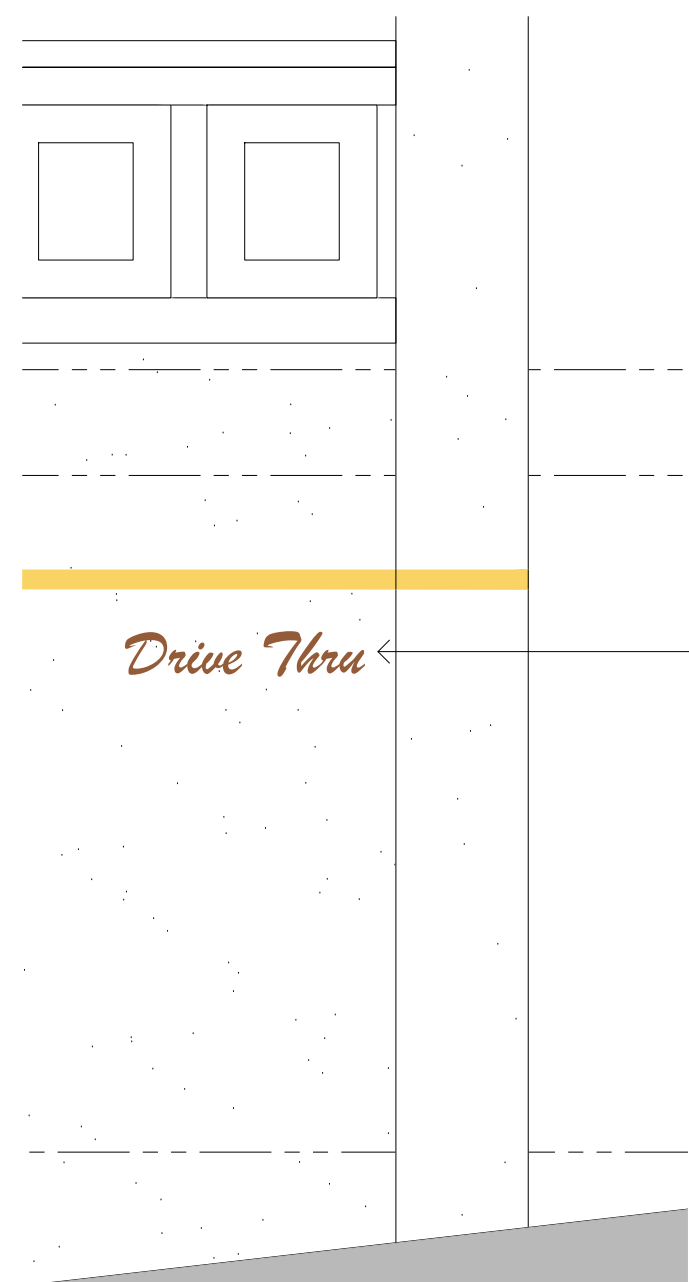
SIGNAGE NOTES:
- DRAWINGS INDICATE SIGNAGE SIZE AND LOCATION. WORDING AND FONT IS INDICATIVE ONLY. WE RESERVE THE RIGHT TO MODIFY THE TEXT
- SIGNAGE STRATEGY FOR OVERALL DESIGN INTENT/ SIGN TYPOLOGIES
- ALL SURROUNDING DEVELOPMENT SHOWN INDICATIVELY

DA LEGEND:
● PROPOSED SIGNAGE
■ FABRIC AWNING

COLOUR PALETTE

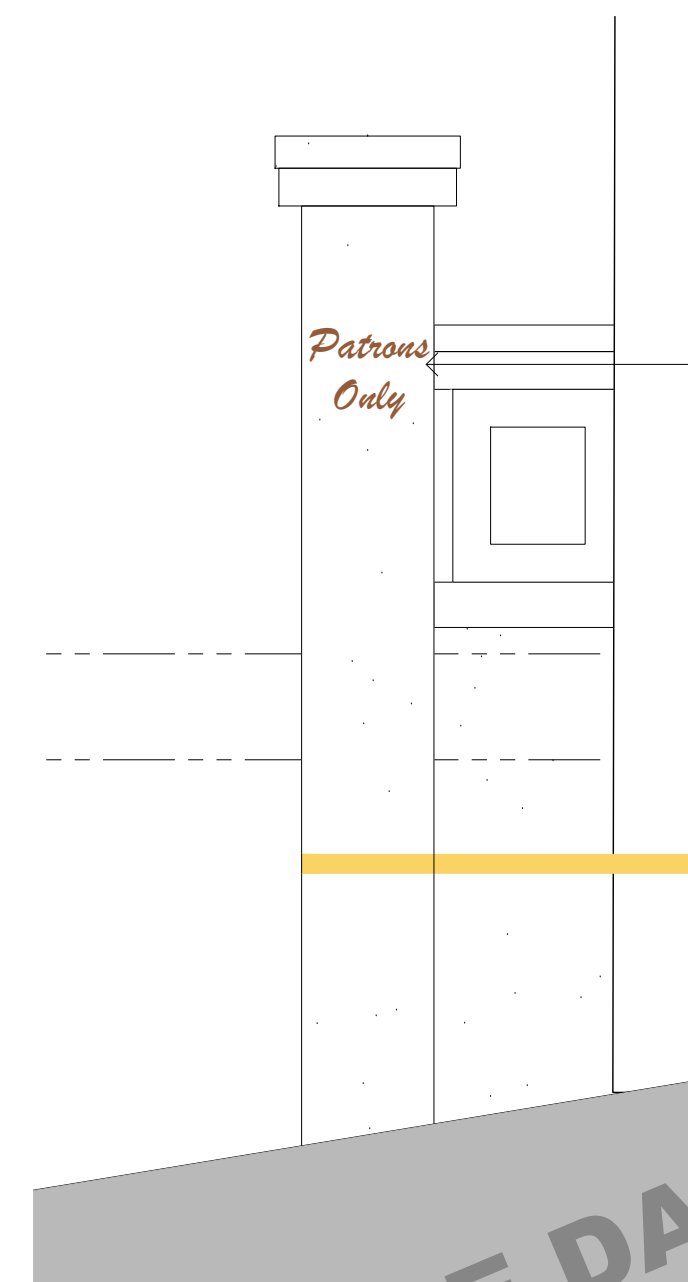
MONARO	HARBORD	SABORD	WAX
PAINTCODE 2322 U CMYK 23 44 83 21 RGS 148 97 34 HEX #F0E68C	PAINTCODE 1416 U CMYK 1 84 91 0 RGS 242 101 32 HEX #FFC000	PAINTCODE 121 U CMYK 0 20 77 0 RGS 255 204 84 HEX #FFC000	PAINTCODE 488 U CMYK 0 20 34 0 RGS 255 210 183 HEX #FFDAB9
STUCCO	POWDER	LEAVED	
PAINTCODE 9180 U CMYK 2 9 21 0 RGS 240 200 200 HEX #F0E68C	PAINTCODE 1015 U CMYK 47 10 10 0 RGS 100 100 100 HEX #E0E0E0	PAINTCODE 1086 U CMYK 43 32 76 15 RGS 127 128 87 HEX #C0C0C0	

HARBORD HOTEL



09 PROPOSED HAND PAINTED WAYFINDING
1:20@A1/1:40@A3

TO REPLACE EXISTING WALL MOUNTED SIGN
STYLE: FLAT SIGN, HAND PAINTED LETTERING.
MATERIALS: HAND PAINTED SIGNAGE.
CONTENT: WAYFINDING
LIGHTING: N/A
COLOUR: MONARO. REFER LEGEND FOR COLOURWAY INFORMATION



10 PROPOSED HAND PAINTED WAYFINDING
1:20@A1/1:40@A3

TO REPLACE EXISTING WALL MOUNTED SIGN
STYLE: FLAT SIGN, HAND PAINTED LETTERING.
MATERIALS: HAND PAINTED SIGNAGE.
CONTENT: WAYFINDING
LIGHTING: N/A
COLOUR: MONARO. REFER LEGEND FOR COLOURWAY INFORMATION

northern beaches council
THIS PLAN IS TO BE READ IN CONJUNCTION WITH THE CONDITIONS OF DEVELOPMENT CONSENT
DA2020/1322

FOR SIGNAGE DA APPROVAL