



THIS PLAN IS TO BE READ IN
CONJUNCTION WITH
THE CONDITIONS OF DEVELOPMENT
CONSENT

DA2020/0988

OFF SITE WELLS
SEE DRAWINGS:
S1.2, S2.1, S2.3, S2.6, S2.7

ON SITE WELLS
SEE DRAWINGS:
S2.2, S2.5

TRANSITION LINES AND
TRANSFER BOXES
SEE DRAWING: S2.4

ANCILLARY EQUIPMENT
SEE DRAWING:
S1.3

WATER TREATMENT PLANT (WTP)
SEE DRAWINGS:
S1.4 AND S1.5

No.60
CONCRETE BUILDING
R.G. KITCHEN,BATHROOM
& PLUMBING SUPPLIES

APPROX. POSITION
OF SEWER

CHAIN WIRE FENCE

CONCRETE SURFACE

TRAFFIC ISLAND

CONCRETE KEROB & GUTTER

CONCRETE KEROB & GUTTER

CONCRETE KEROB & GUTTER

CONCRETE KEROB & GUTTER

CONCRETE KEROB & GUTTER

CONCRETE KEROB & GUTTER

CONCRETE KEROB & GUTTER

CONCRETE KEROB & GUTTER

CONCRETE KEROB & GUTTER

CONCRETE KEROB & GUTTER

CONCRETE KEROB & GUTTER

CONCRETE KEROB & GUTTER

CONCRETE KEROB & GUTTER

CONCRETE KEROB & GUTTER

CONCRETE KEROB & GUTTER

CONCRETE KEROB & GUTTER

CONCRETE KEROB & GUTTER

CONCRETE KEROB & GUTTER

CONCRETE KEROB & GUTTER

CONCRETE KEROB & GUTTER

CONCRETE KEROB & GUTTER

CONCRETE KEROB & GUTTER

CONCRETE KEROB & GUTTER

CONCRETE KEROB & GUTTER

CONCRETE KEROB & GUTTER

CONCRETE KEROB & GUTTER

CONCRETE KEROB & GUTTER

CONCRETE KEROB & GUTTER

CONCRETE KEROB & GUTTER

CONCRETE KEROB & GUTTER

CONCRETE KEROB & GUTTER

CONCRETE KEROB & GUTTER

CONCRETE KEROB & GUTTER

CONCRETE KEROB & GUTTER

CONCRETE KEROB & GUTTER

CONCRETE KEROB & GUTTER

LEGEND

- +2.51 - DENOTES SPOT LEVEL.
- HY - DENOTES HYDRANT.
- LP - DENOTES LIGHT POLE
- OPP - DENOTES POWER POLE.
- SV - DENOTES STOP VALVE.
- - DENOTES BOLLARD.
- 100MM TRANSFER PIPE
- 75MM TRANSFER PIPE
- 50MM TRANSFER PIPE
- SERVICE CHANNEL
- NO MACHINE DIG ZONES. ONLY NDD TRENCHES BELOW HARDSTAND. ALL SERVICES INSIDE TRENCH TO BE POSITIVELY IDENTIFIED. NO WELL ZONES.
- BELOW GROUND TRANSITION PIT
- ABOVE GROUND TRANSITION PIT
- PRESSED METAL COVER
- EXTRACTION WELL

ENVIROPACIFIC

STARCE
ENGINEERING

STARCE ENGINEERING PTY LTD
17 O'CONNOR ST.
CHIPPENDALE NSW 2008
P: 02 9690 1734
W: STARCEENGINEERING.COM.AU

CONSULTANT CONTRACT NUMBER: NNNNN

DESIGNED	M.S.				
DRAWN	M.L.S.				
VERIFIED	M.S.				
APPROVED	M.S.	A	DEVELOPMENT APPLICATION	MS	21/12/20
		LETTER	DETAILS OF AMENDMENT	APP'D	DATE



THIS DRAWING SUPERSEDES
RECOMMENDED
ACCEPTED

MASTER PLAN

PROJ No. ST20 356

DRAWING STATUS: DEVELOPMENT APPLICATION

DRAWING No.

S1.1

DRAFT SHEET No.

A

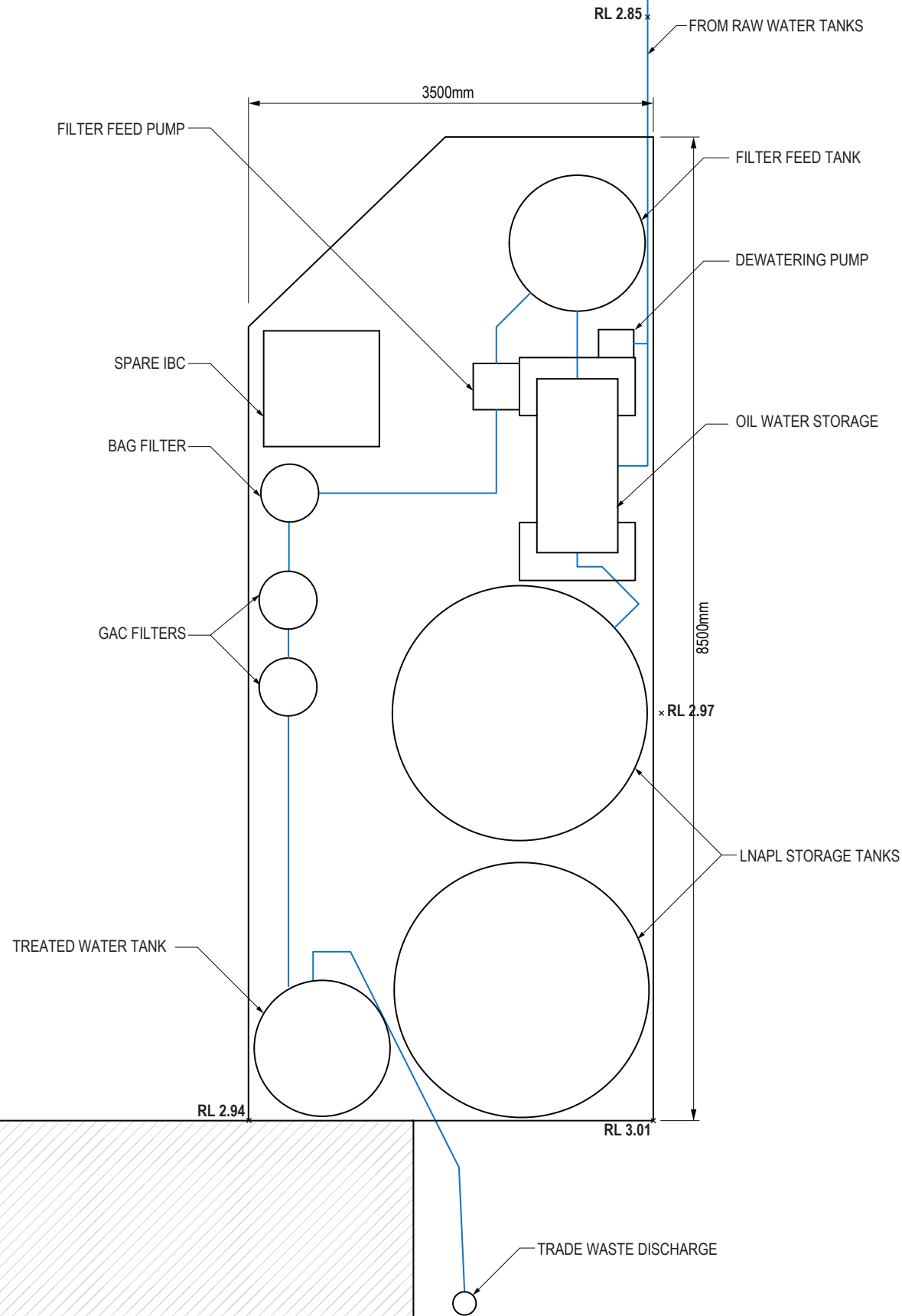
-



northern
beaches
council

THIS PLAN IS TO BE READ IN
CONJUNCTION WITH
THE CONDITIONS OF DEVELOPMENT
CONSENT

DA2020/0988



WATER TREATMENT PLANT PLAN
SCALE 1:50

1
S1.4

ENVIROPACIFIC

STARC
ENGINEERING

STARC ENGINEERING PTY LTD
17 O'CONNOR ST,
CHIPPENDALE NSW 2008
P: 02 9690 1734
W: STARCENGINEERING.COM.AU

CONSULTANT CONTRACT NUMBER: NNNNN

DESIGNED	M.S.								
DRAWN	M.L.S.								
VERIFIED	M.S.								
APPROVED	M.S.	A	DEVELOPMENT APPLICATION	MS	21/12/20				
	LETTER		DETAILS OF AMENDMENT	APP'D	DATE				



THIS DRAWING SUPERSEDES
RECOMMENDED
ACCEPTED

WATER TREATMENT PLANT PLAN

DRAWING No.
S1.4

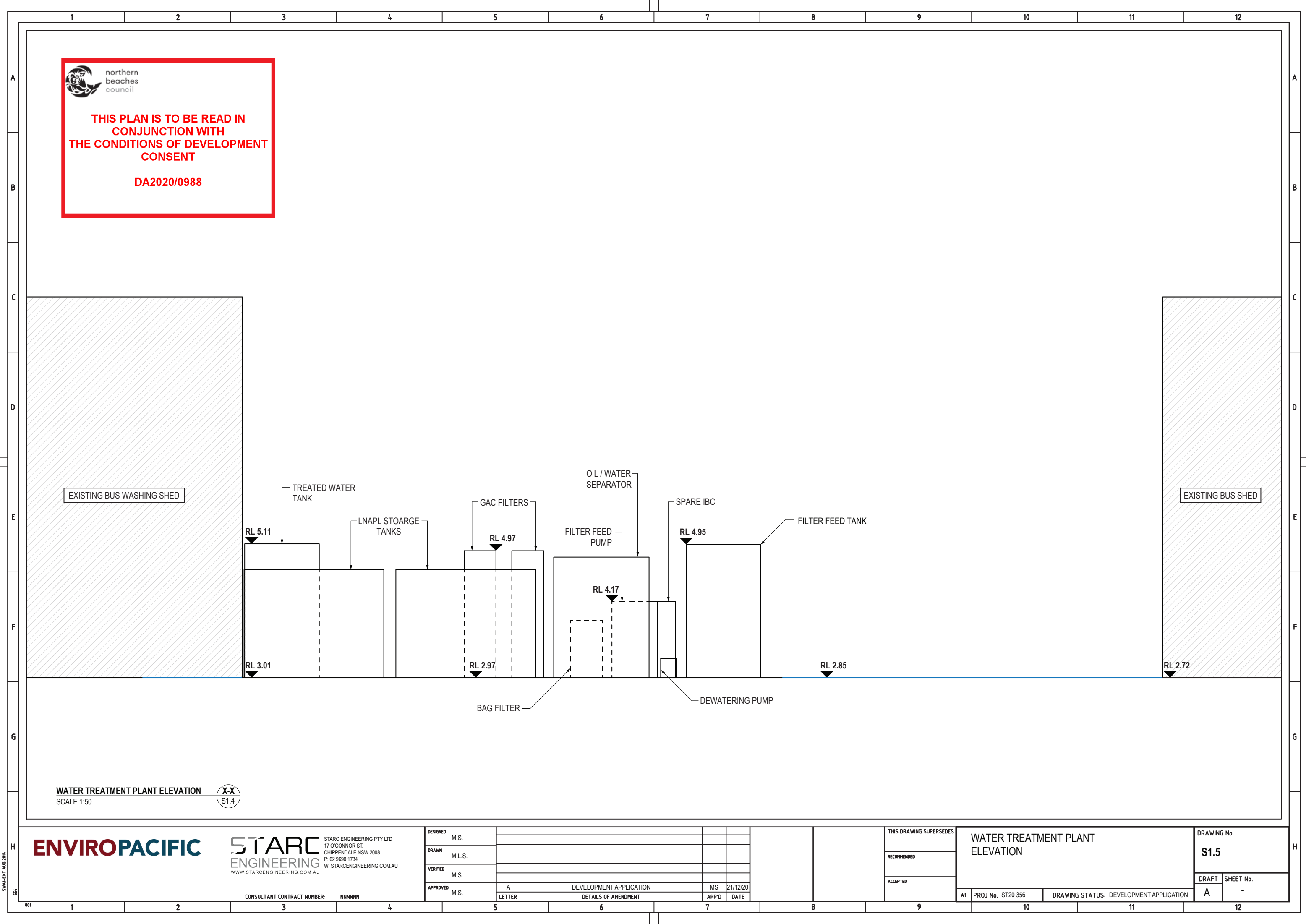
DRAFT SHEET No.

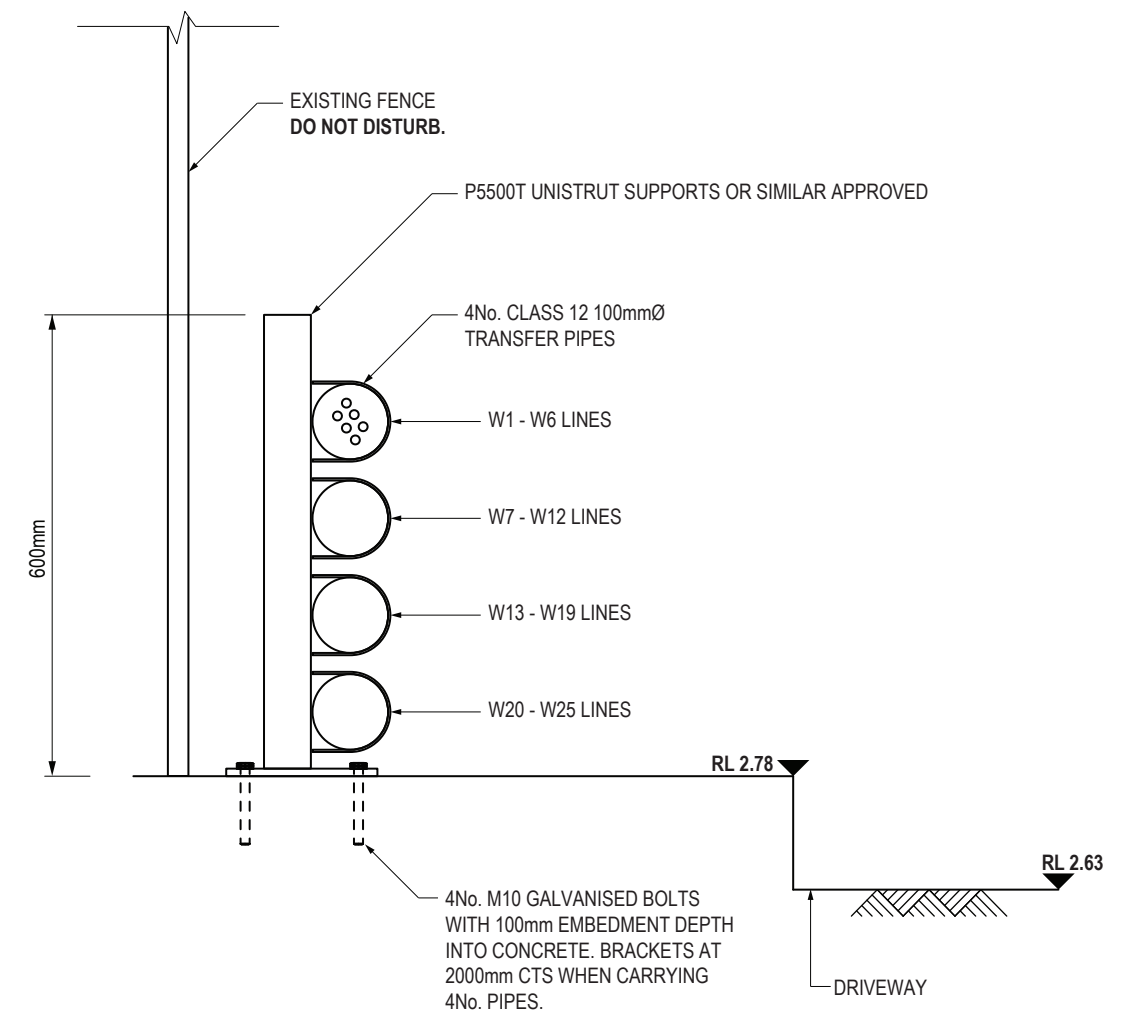
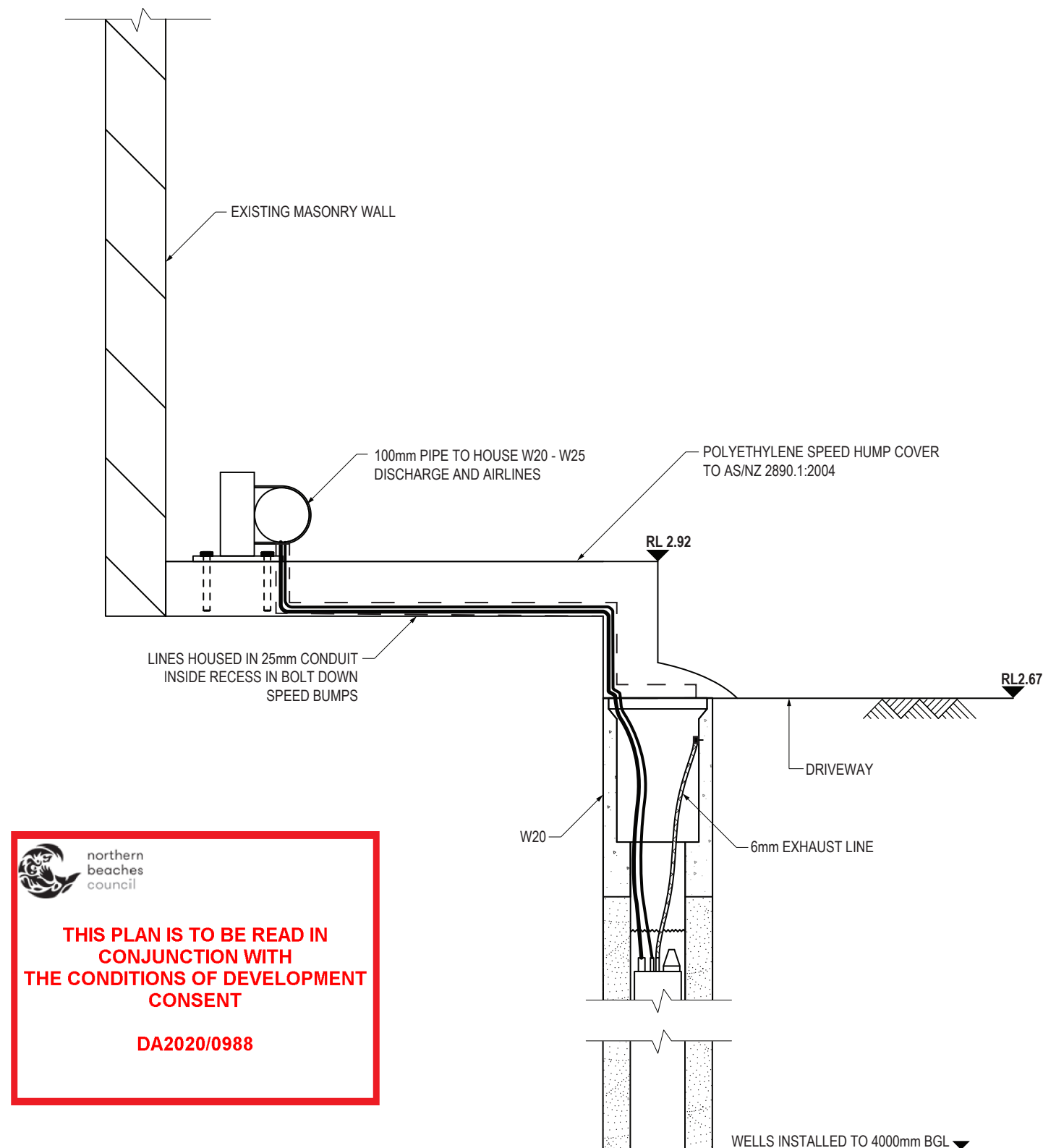
A

-

A1 PROJ No. ST20 356

DRAWING STATUS: DEVELOPMENT APPLICATION





TRANSFER LINE LAYOUT ON WESTERN STA BOUNDARY

SCALE 1:10

2
S1.4



northern
beaches
council

**THIS PLAN IS TO BE READ IN
CONJUNCTION WITH
THE CONDITIONS OF DEVELOPMENT
CONSENT**

DA2020/0988

W20 - W25 WELLS TO TRANSFER PIPE TRANSITION

SCALE 1:10

1
S2.2

ENVIROPACIFIC

STARC
ENGINEERING
WWW.STARCENGINEERING.COM.AU

STARC ENGINEERING PTY LTD
17 O'CONNOR ST,
CHIPPENDALE NSW 2008
P: 02 9690 1734
W: STARCENGINEERING.COM.AU

CONSULTANT CONTRACT NUMBER: NNNNNN

DESIGNED	M.S.				
DRAWN	M.L.S.				
VERIFIED	M.S.				
APPROVED	M.S.	A	DEVELOPMENT APPLICATION	MS	21/12/20
		LETTER	DETAILS OF AMENDMENT	APP'D	DATE

THIS DRAWING SUPERSEDES
RECOMMENDED
ACCEPTED

WELLS TO TRANSFER PIPE TRANSITION
TRANSFER LAYOUT ON WESTERN STA
BOUNDARY
SECTIONS

DRAWING No.

S2.2

DRAFT	SHEET No.
-------	-----------

A

—

A1	PROJ No. ST20 356
----	-------------------

DRAWING STATUS: DEVELOPMENT APPLICATION

11

1 2 3 4 5 6 7 8 9 10 11 12

A

B

C

D

E

F

G

WORKS ON PRIVATE PROPERTY - 10 TARONGA PLACE

No. 9
TARONGA PLACE

No. 10 TARONGA PLACE
(REECE) CARPARK

EXISTING MASONRY WALL

FOLDED GALVANISED
SHEET METAL

POLYETHYLENE SPEED HUMP COVER
TO AS/NZ 2890.1:2004

EXISTING WHEEL STOP

RL 3.08

RL 2.78

DN 100mm

DN 100mm

DN 150mm

EXISTING CONCRETE KERB

M12 BOLTS 100mm LONG
AT 2500mm CTS

12mm DISCHARGE
LINE TO WTP

6mm AIRLINE FROM COMPRESSOR

INFERRED LNAPL LEVEL

NEW WELL TO 4000mm BGL

WELLS INSTALLED TO 4000mm BGL

NOTES

1. M12 BOLTS INSTALLED ON EXISTING LINE MARKING. HOLES TO BE FILLED AND PAINTED OVER UPON DECOMMISSIONING.

2. NO FIXING TO No. 9 WALL. GALVANISED SHEET METAL COVER THICKNESS SUFFICIENT TO MAINTAIN INTEGRITY WITH FLOOR FIXING ONLY.

northern
beaches
council

THIS PLAN IS TO BE READ IN
CONJUNCTION WITH
THE CONDITIONS OF DEVELOPMENT
CONSENT

DA2020/0988

WELL AND TRANSFER LINES COVER INSIDE No. 10 TARONGA PLACE CARPARK

SCALE 1:10

1
S2.3

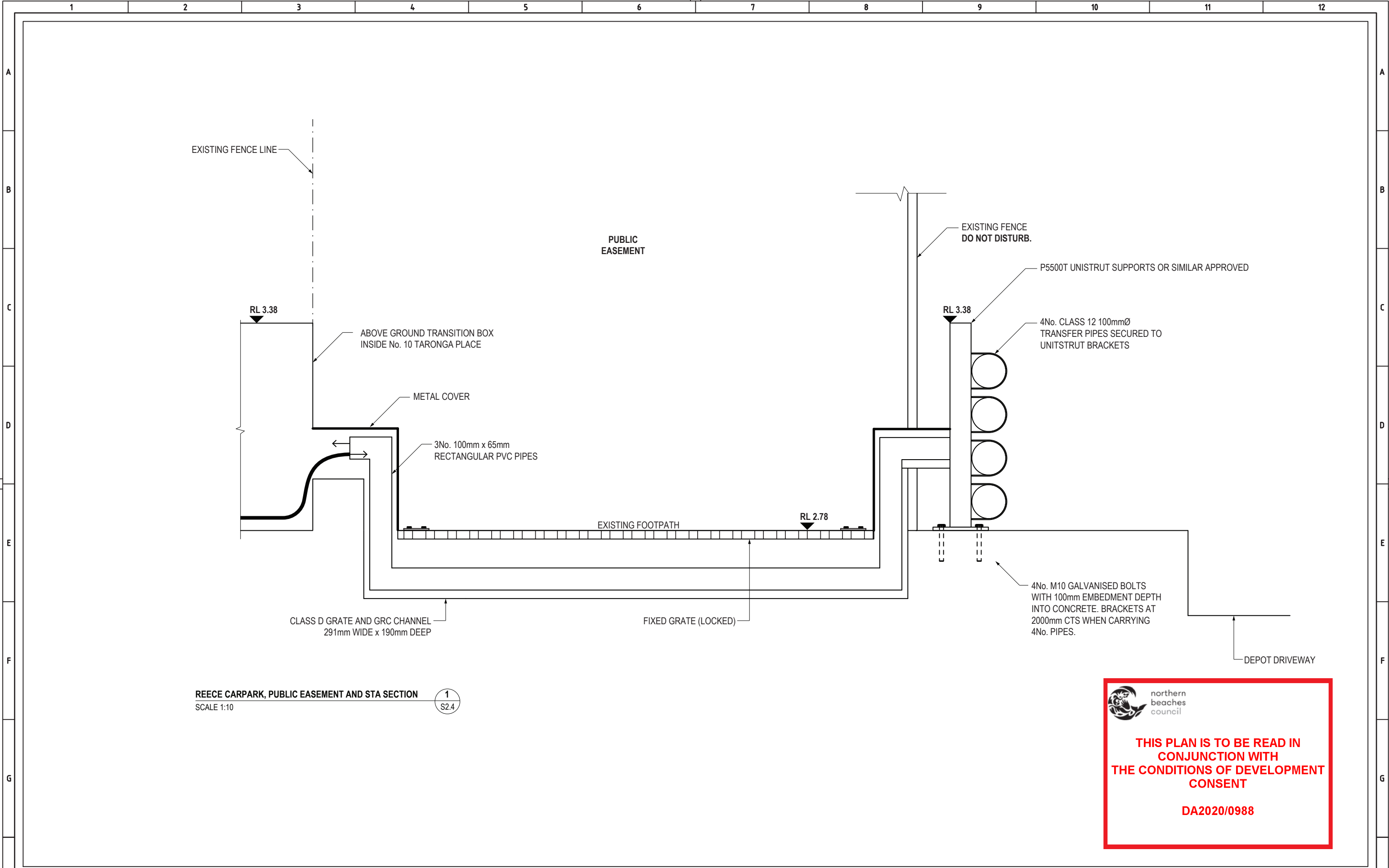
1. M12 BOLTS INSTALLED ON EXISTING LINE MARKING. HOLES TO BE FILLED AND PAINTED OVER UPON DECOMMISSIONING.

2. NO FIXING TO No. 9 WALL. GALVANISED SHEET METAL COVER THICKNESS SUFFICIENT TO MAINTAIN INTEGRITY WITH FLOOR FIXING ONLY.

DA2020/0988

1
S2.3

A



REECE CARPARK, PUBLIC EASEMENT AND STA SECTION
SCALE 1:10

1
S2.4

 **northern
beaches
council**

**THIS PLAN IS TO BE READ IN
CONJUNCTION WITH
THE CONDITIONS OF DEVELOPMENT
CONSENT**

DA2020/0988

ENVIROPACIFIC

**STARC
ENGINEERING**
WWW.STARCEENGINEERING.COM.AU

STARC ENGINEERING PTY LTD
17 O'CONNOR ST,
CHIPPENDALE NSW 2008
P: 02 9690 1734
W: STARCEENGINEERING.COM.AU

CONSULTANT CONTRACT NUMBER: NNNNN

DESIGNED	M.S.					
DRAWN	M.L.S.					
VERIFIED	M.S.					
APPROVED	M.S.	A	DEVELOPMENT APPLICATION	MS	21/12/20	
		LETTER	DETAILS OF AMENDMENT	APP'D	DATE	

THIS DRAWING SUPERSEDES
RECOMMENDED
ACCEPTED

REECE CARPARK, PUBLIC EASEMENT AND STA
SECTION

DRAWING No.
S2.4

DRAFT SHEET No.

A

-

A1 PROJ No. ST20 356

DRAWING STATUS: DEVELOPMENT APPLICATION

PIPEWORK UNDER KERB & GUTTER AND FOOTPATH

TARONGA PLACE

EXISTING AC10 LEVEL

RL 2.67

EXISTING KERB AND GUTTER.
DO NOT DISTURB.

EXISTING FOOTPATH.
DO NOT DISTURB.

RL 2.78

BASE OF EXCAVATION
RL 2.38

EXISTING CONCRETE

2 x 100mmØ CLASS 12 PIPE.
1No. PIPE HOUSING AIR SUPPLY AND
EXTRACTION LINES FROM W1 - W6.
1No. PIPE HOUSING W7 - W11 LINES.

PIPEWORK UNDER KERB & GUTTER AND FOOTPATH

SCALE 1:10

1
S2.6

SURVEYED ELECTRICAL CABLES
COVER TO BE POSITIVELY IDENTIFIED VIA NDD
AT COMMENCEMENT OF LOCALISED WORKS.
DO NOT EXPOSE OR DISTURB.

RL 1.98

SURVEYED DEPTH OF COMMUNICATIONS CABLE
TO BE POSITIVELY IDENTIFIED VIA NDD.
DO NOT EXPOSE OR DISTURB.

RL 1.88



**THIS PLAN IS TO BE READ IN
CONJUNCTION WITH
THE CONDITIONS OF DEVELOPMENT
CONSENT**

DA2020/0988

NOTES

1. NO MACHINE DIGGING IN THIS ZONE. NDD ONLY, TO ELIMINATE SERVICE STRIKE RISK AND DAMAGE TO KERB & GUTTER AND FOOTPATH.

ENVIROPACIFIC

STARC
ENGINEERING
WWW.STARCEENGINEERING.COM.AU

STARC ENGINEERING PTY LTD
17 O'CONNOR ST,
CHIPPENDALE NSW 2008
P: 02 9690 1734
W: STARCENGINEERING.COM.AU

CONSULTANT CONTRACT NUMBER: NNNNNN

DESIGNED	M.S.				
DRAWN	M.L.S.				
VERIFIED	M.S.				
APPROVED	M.S.	A	DEVELOPMENT APPLICATION	MS	21/12/20
		LETTER	DETAILS OF AMENDMENT	APP'D	DATE

THIS DRAWING SUPERSEDES
RECOMMENDED
ACCEPTED

PIPEWORK UNDER KERB & GUTTER AND
FOOTPATH
SECTION

DRAWING No.

S2.6

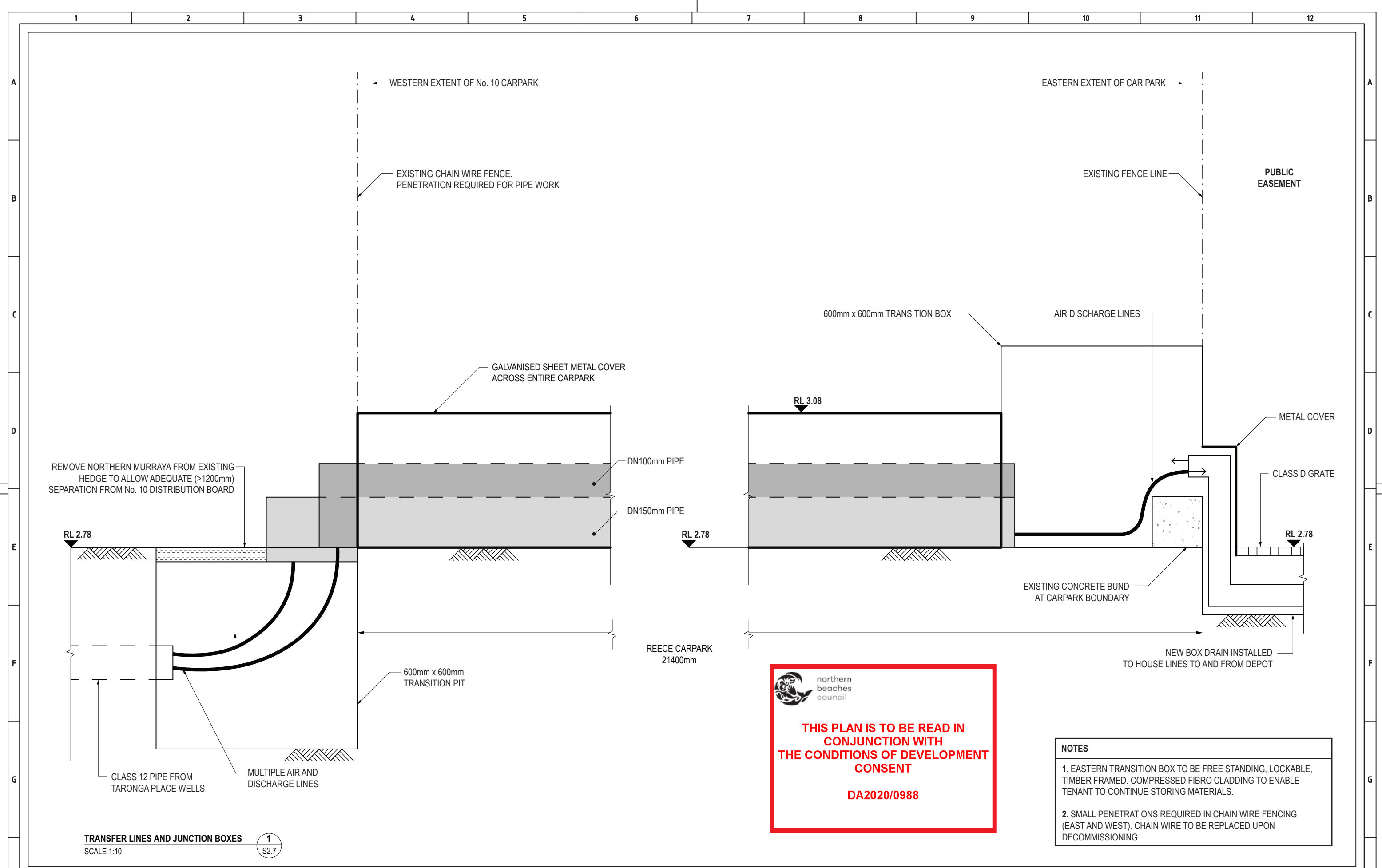
DRAFT	SHEET No.
-------	-----------

A1	PROJ No. ST20 356
----	-------------------

DRAWING STATUS: DEVELOPMENT APPLICATION

A

—



ENVIROPACIFIC		STARC ENGINEERING		STARC ENGINEERING PTY LTD 17 O'CONNOR ST, CHIPPENDALE NSW 2008 P: 02 9690 1734 W: STARCENGINEERING.COM.AU		DESIGNED M.S.		DRAWN M.L.S.		VERIFIED M.S.		APPROVED M.S.		THIS DRAWING SUPERSEDES		RECOMMENDED		ACCEPTED		PRIVATE PROPERTY, 10 TARONGA PLACE TRANSFER LINES AND JUNCTION BOXES SECTION		DRAWING No. S2.7	
CONSULTANT CONTRACT NUMBER: NNNNN		A		DEVELOPMENT APPLICATION		MS		21/12/20		APP'D		DATE		A1		PROJ No. ST20 356		DRAWING STATUS: DEVELOPMENT APPLICATION		DRAFT		SHEET No. -	
1		2		3		4		5		6		7		8		9		10		11		12	