

Copyright © 2013 by the Board of Trustees of the University of Illinois. All rights reserved.

These drawings, plans and specifications and the copyright therein are the property of the Board of Trustees of the University of Illinois. No part of this publication may be reproduced, stored in a retrieval system, or transmitted, in any form or by any means, electronic, mechanical, photocopying, recording, or by any information storage and retrieval system, without the prior written permission of the Board of Trustees of the University of Illinois.

Rev	Description	Date	By	App
P5	COUNCIL SUBMISSION	10.07.17	JF	-
P4	COUNCIL SUBMISSION	23.06.17	JF	-
P3	COUNCIL SUBMISSION	24.10.16	JF	-
P2	COUNCIL SUBMISSION	18.10.16	JF	-
P1	PRELIMINARY ISSUE	26.08.16	JF	-

P6	COUNCIL SUBMISSION	04.08.17	MM	-
Rev	Description	Date	By	App


 **Meriton**
Apartments Pty. Ltd.
Builders & Developers

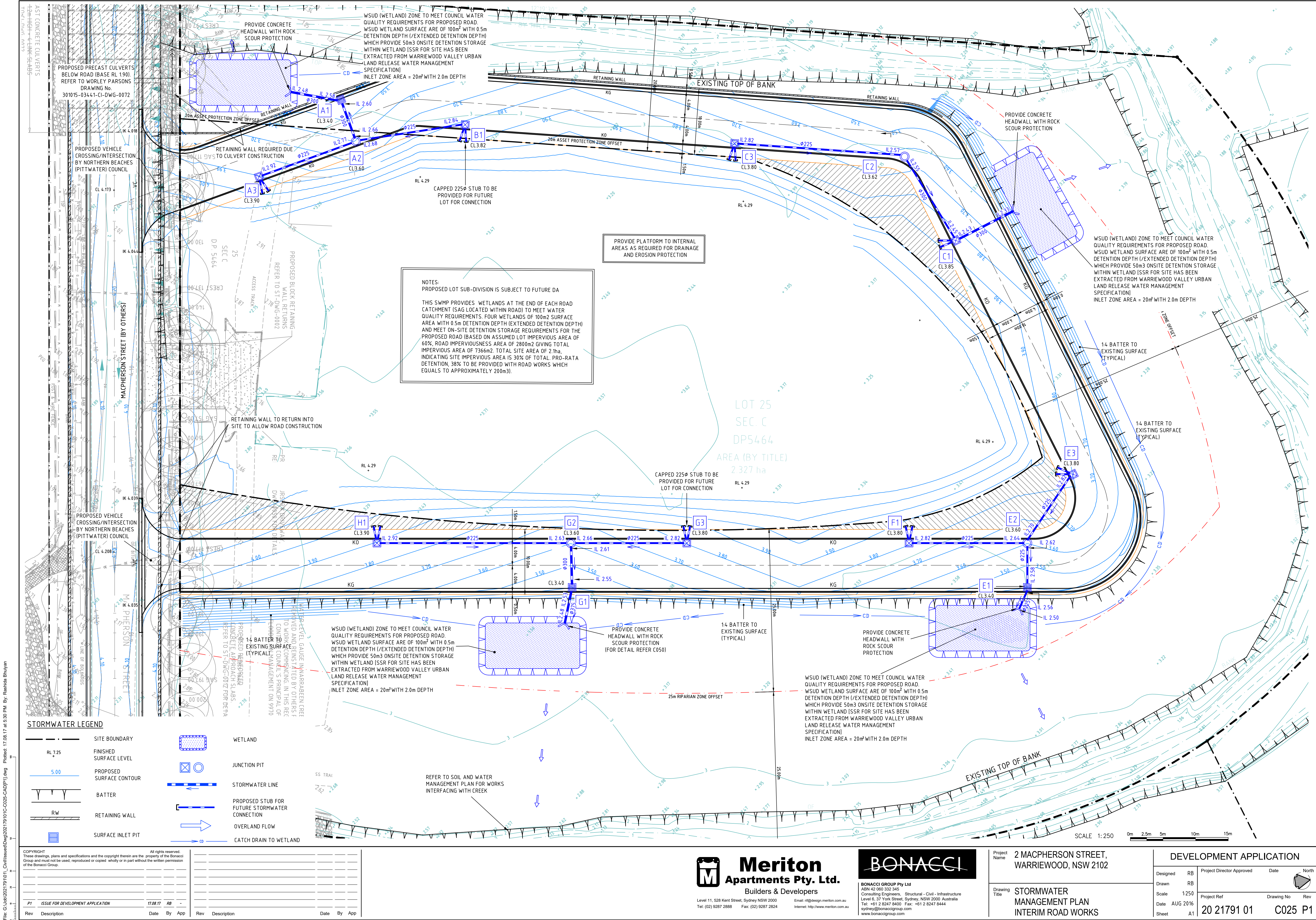
Level 11, 528 Kent Street, Sydney NSW 2000
Tel: (02) 9287 2888 Fax: (02) 9287 2824
Email: rlf@design.meriton.com.au
Internet: <http://www.meriton.com.au>

BONACCI

BONACCI GROUP Pty Ltd
ABN 42 060 332 345
Consulting Engineers, Structural - Civil - Infrastructure
Level 6, 37 York Street, Sydney, NSW 2000 Australia
Tel: +61 2 8247 8400 Fax: +61 2 8247 8444
sydney@bonaccigroup.com
www.bonaccigroup.com

Project Name	2 MACPHERSON STREET, WARRIEWOOD, NSW 2102
Drawing Title	SITE REDEVELOPMENT CONCEPT PLAN ONE-WAY ROAD

PRELIMINARY				
Designed	JF	Project Director Approved	Date	North 
Drawn	JF			
Scale	1:250			
Date	AUG 2016	Project Ref	Drawing No	Rev
Sheet	A1	20 21791 01	SK02	P6



File: G:\2021\79101_Civil\Issued\DWG\202179101_C025-CAD[P1].dwg Plotted: 17.08.17 at 5:30 PM By: Rashida Bhuiyan

STORMWATER LEGEND

- SITE BOUNDARY
- FINISHED SURFACE LEVEL
- PROPOSED SURFACE CONTOUR
- BATTER
- RETAINING WALL
- SURFACE INLET PIT
- WETLAND
- JUNCTION PIT
- STORMWATER LINE
- PROPOSED STUB FOR FUTURE STORMWATER CONNECTION
- OVERLAND FLOW
- CATCH DRAIN TO WETLAND

COPYRIGHT					All rights reserved.				
These drawings, plans and specifications and the copyright therein are the property of the Bonacci Group and must not be used, reproduced or copied, wholly or in part without the written permission of the Bonacci Group.					To work on drawings in this field, the user must be a member of the Bonacci Group.				
PI	ISSUE FOR DEVELOPMENT APPLICATION	17.08.17	RB	-	Rev	Description	Date	By	App
1					1				
2					2				
3					3				
4					4				
5					5				
6					6				
7					7				
8					8				
9					9				
10					10				
11					11				
12					12				
13					13				
14					14				
15					15				
16					16				
17					17				
18					18				
19					19				
20					20				

Meriton
Apartments Pty. Ltd.
Builders & Developers

BONACCI
BONACCI GROUP Pty Ltd
ABN 42 060 332 345
Consulting Engineers, Structural - Civil - Infrastructure
Level 6, 37 York Street, Sydney, NSW 2000, Australia
Tel: +61 2 8247 8400 Fax: +61 2 8247 8444
sydney@bonaccigroup.com
www.bonaccigroup.com

Project Name
2 MACPHERSON STREET,
WARRIEWOOD, NSW 2102

Drawing Title
STORMWATER
MANAGEMENT PLAN
INTERIM ROAD WORKS

DESIGNED FOR DEVELOPMENT APPLICATION

Designed	RB	Project Director Approved	Date	North
Drawn	RB			
Scale	1:250	Project Ref	Drawing No	Rev
Date	AUG 2016	20 21791 01	C025	P1
Sheet	A1			