



THIS PLAN IS TO BE READ IN  
CONJUNCTION WITH  
THE CONDITIONS OF DEVELOPMENT  
CONSENT

DA2022/1433

GLYDE

unit 24, 47-55 john street  
leichhardt 2040 nsw australia  
M: 0414 336 436  
T: 02 8216 1839  
ABN: 27 227 626 896  
info@glydebautovich.com.au  
glydebautovich.com.au

BAUTOVICH

rev	date	revision notes	drawn by	checked by
01	21/03/22		PH	CG
02	14/07/22	Development Application Submission		CG
03	21/11/22	Development Application Revision	PH, HH	CG

This drawing is for approval only, not for construction. Copyright © Glyde Bautovich.

north



RSL Life Care Narrabeen Fire Services  
for RSL Life Care  
90 Veterans Parade Narrabeen NSW 2101 Australia  
lot 2641/2026 DP 752038

dwg no.  
DA-100-02

Site Plans  
Site Plan

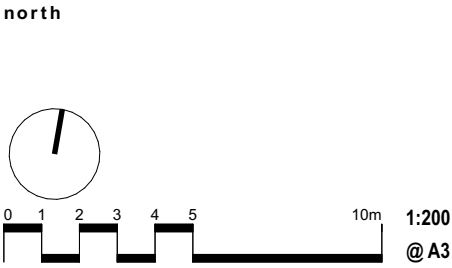
FOR DA SUBMISSION  
rev: 03

21008



rev	date	revision notes	drawn by	checked by
01	21/03/22		PH	CG
02	14/07/22	Development Application Submission		CG
03	21/11/22	Development Application Revision	PH, HH	CG

This drawing is for approval only, not for construction. Copyright © Glyde Bautovich.

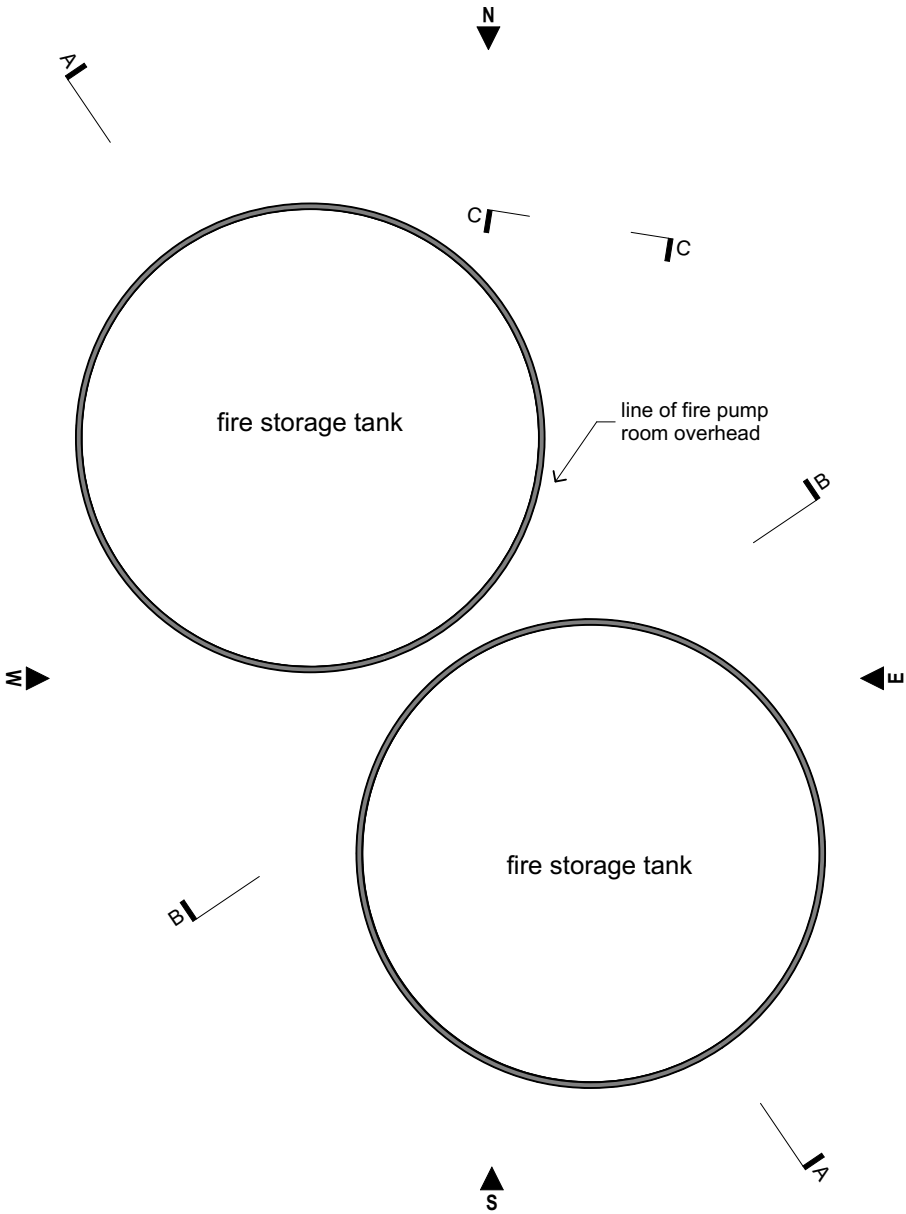


**RSL Life Care Narrabeen Fire Services**  
for RSL Life Care  
90 Veterans Parade Narrabeen NSW 2101 Australia  
lot 2641/2026 DP 752038

**21008**

**DA-110-00**  
GA Plans  
**Lower Ground Plan**

**FOR DA SUBMISSION**  
rev: **03**



 northern beaches council

**THIS PLAN IS TO BE READ IN CONJUNCTION WITH THE CONDITIONS OF DEVELOPMENT CONSENT**

**DA2022/1433**

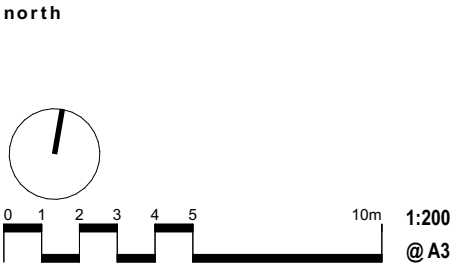
GLYDE

unit 24, 47-55 john street  
leichhardt 2040 nsw australia  
M: 0414 336 436  
T: 02 8216 1839  
ABN: 27 227 626 896  
info@glydebautovich.com.au  
glydebautovich.com.au

BAUTOVICH

rev	date	revision notes	drawn by	checked by
01	21/03/22		PH	CG
02	14/07/22	Development Application Submission		CG
03	21/11/22	Development Application Revision	PH, HH	CG

This drawing is for approval only, not for construction. Copyright © Glyde Bautovich.



**RSL Life Care Narrabeen Fire Services**

for RSL Life Care  
90 Veterans Parade Narrabeen NSW 2101 Australia  
lot 2641/2026 DP 752038

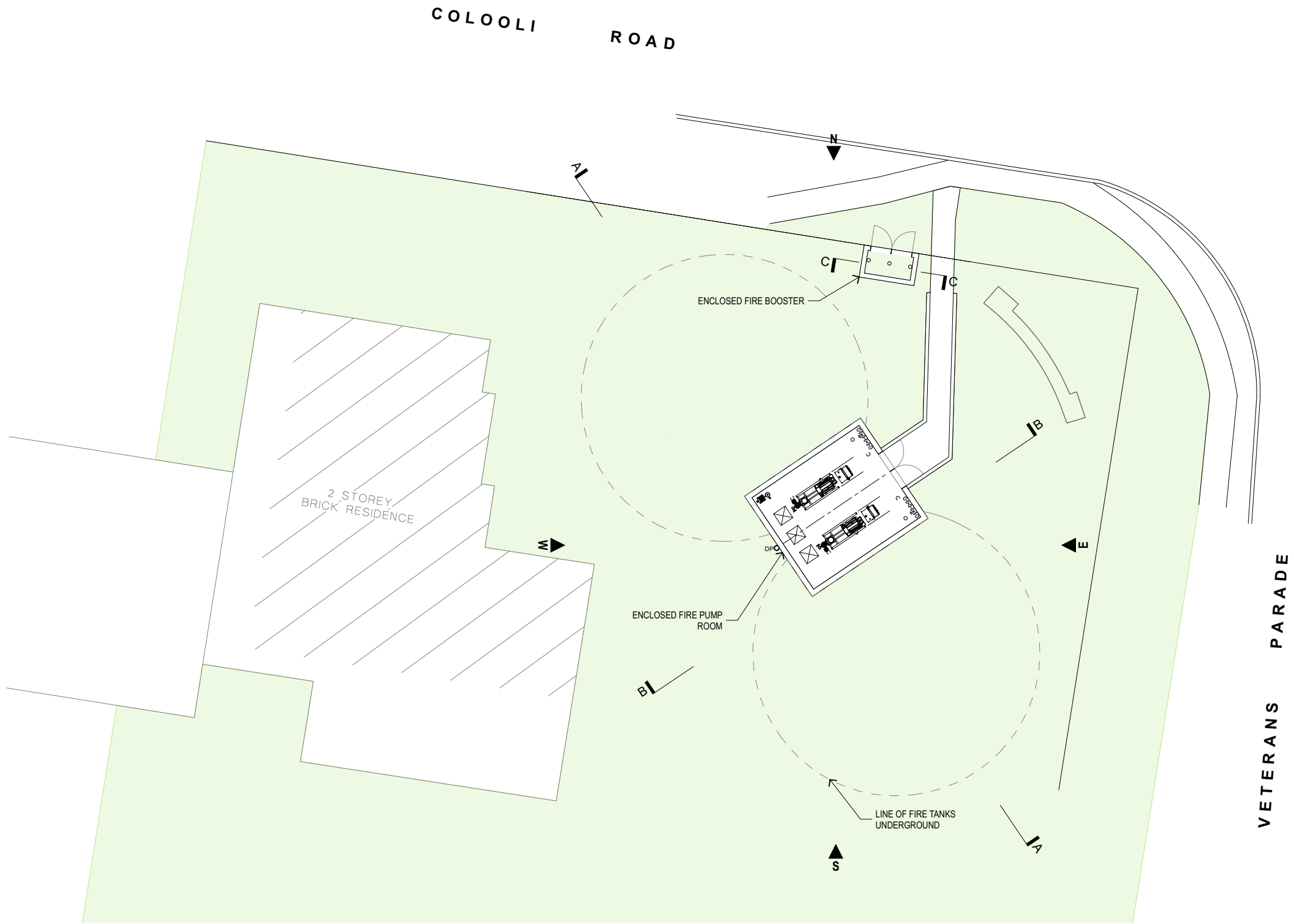
dwg no.  
**DA-110-01**

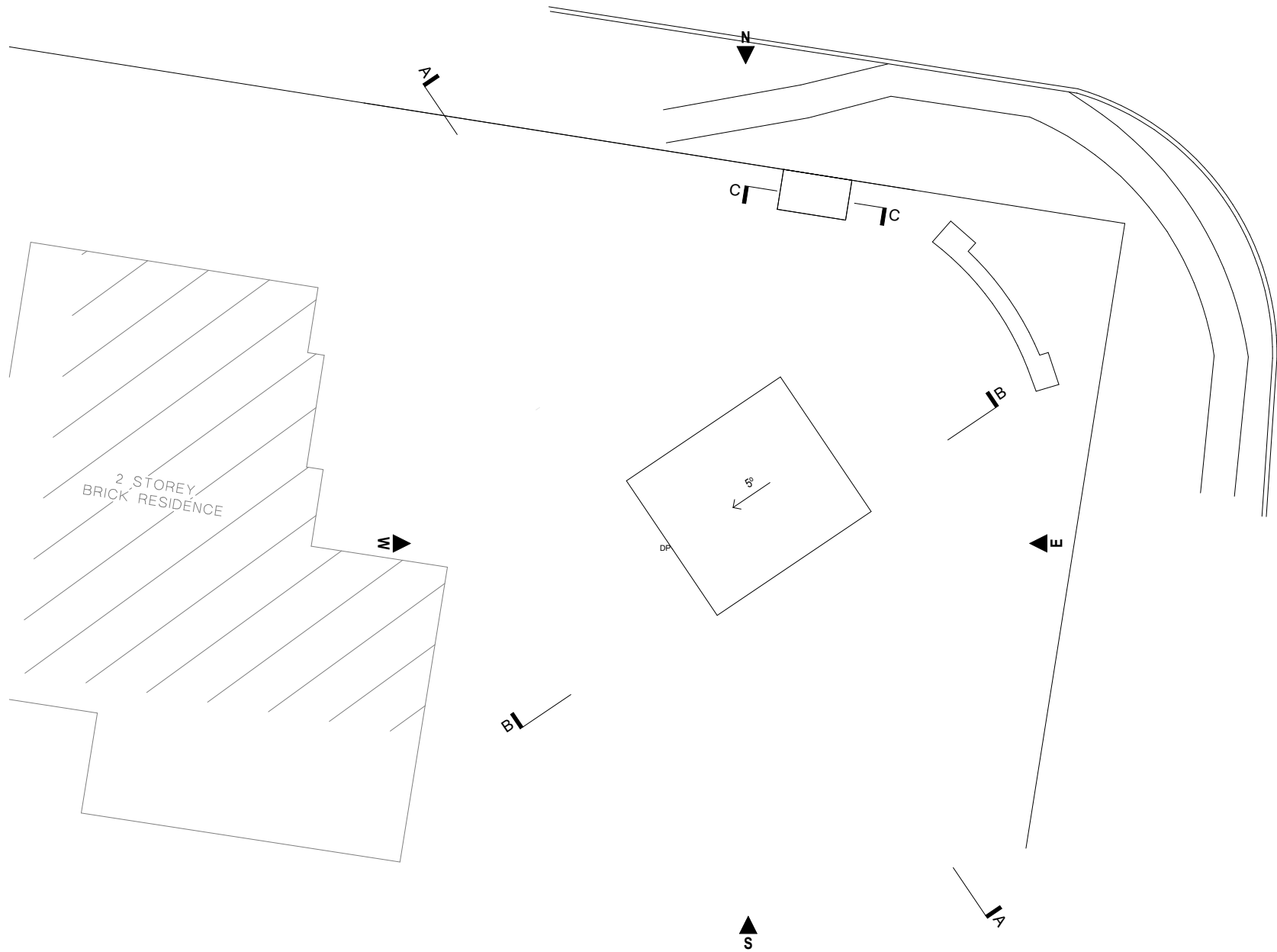
GA Plans  
**Ground Plan**

21008

**FOR DA SUBMISSION**

rev: **03**







northern  
beaches  
council

THIS PLAN IS TO BE READ IN  
CONJUNCTION WITH  
THE CONDITIONS OF DEVELOPMENT  
CONSENT

DA2022/1433

GLYDE


unit 24, 47-55 john street  
leichhardt 2040 nsw australia  
M: 0414 336 436  
T: 02 8216 1839  
ABN: 27 227 626 896  
info@glydebautovich.com.au  
glydebautovich.com.au


BAUTOVICH

rev	date	revision notes	drawn by	checked by
01	21/03/22		PH	CG
02	14/07/22	Development Application Submission		CG
03	21/11/22	Development Application Revision	PH, HH	CG

This drawing is for approval only, not for construction. Copyright © Glyde Bautovich.

north





0 1 2 3 4 5 10m

1:200  
@A3

RSL Life Care Narrabeen Fire Services

for RSL Life Care  
90 Veterans Parade Narrabeen NSW 2101 Australia  
lot 2641/2026 DP 752038

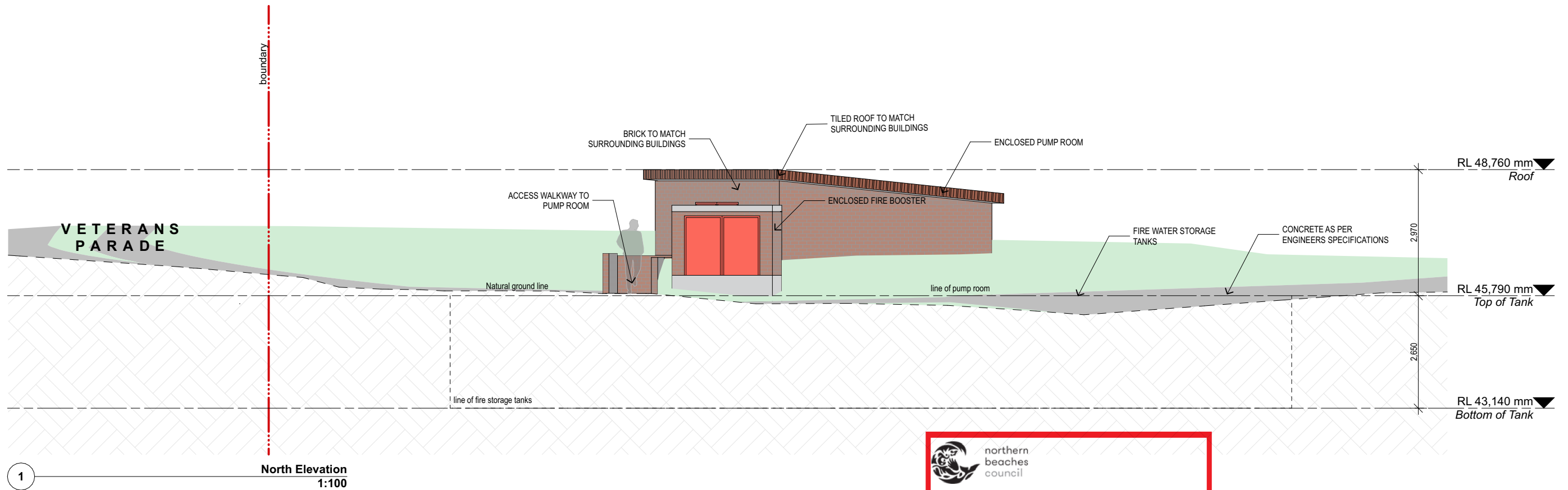
21008

dwg no.  
DA-110-02

GA Plans  
Roof Plan

FOR DA SUBMISSION

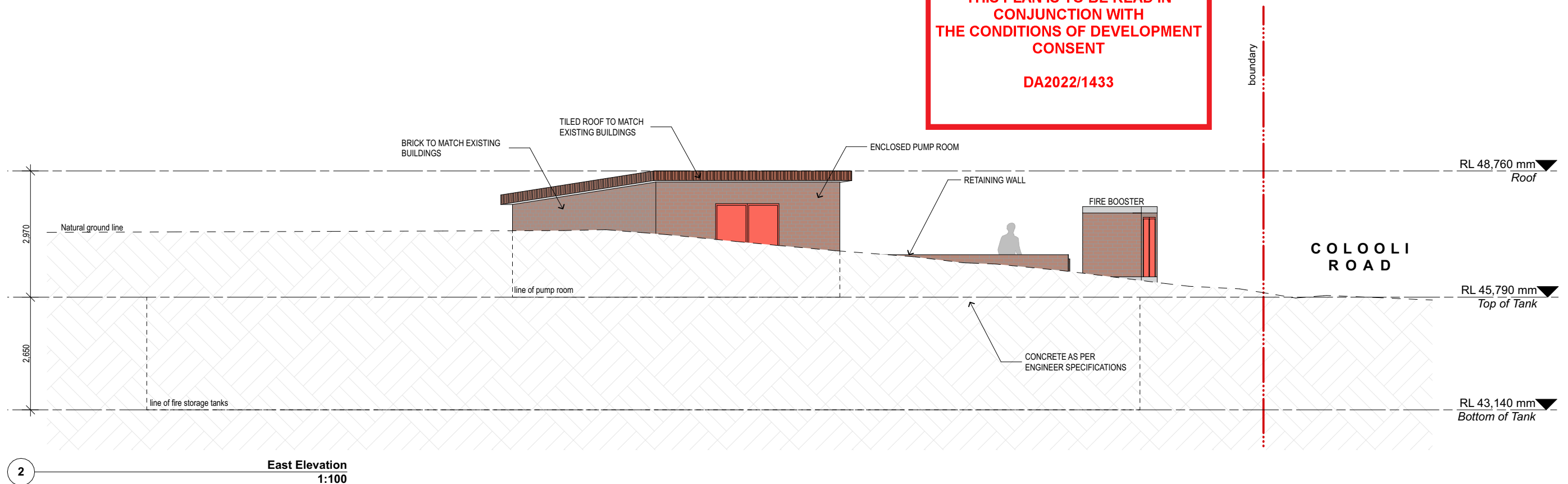
rev: 03



 northern beaches council

**THIS PLAN IS TO BE READ IN CONJUNCTION WITH THE CONDITIONS OF DEVELOPMENT CONSENT**

**DA2022/1433**



**GLYDE**

unit 24, 47-55 john street  
leichhardt 2040 nsw australia  
M: 0414 336 436  
T: 02 8216 1839  
ABN: 27 227 626 896  
info@glydebautovich.com.au  
glydebautovich.com.au

**BAUTOVICH**

rev	date	revision notes	drawn by	checked by
01	21/03/22		PH	CG
02	14/07/22	Development Application Submission		CG
03	21/11/22	Development Application Revision	PH, HH	CG

This drawing is for approval only, not for construction. Copyright © Glyde Bautovich.



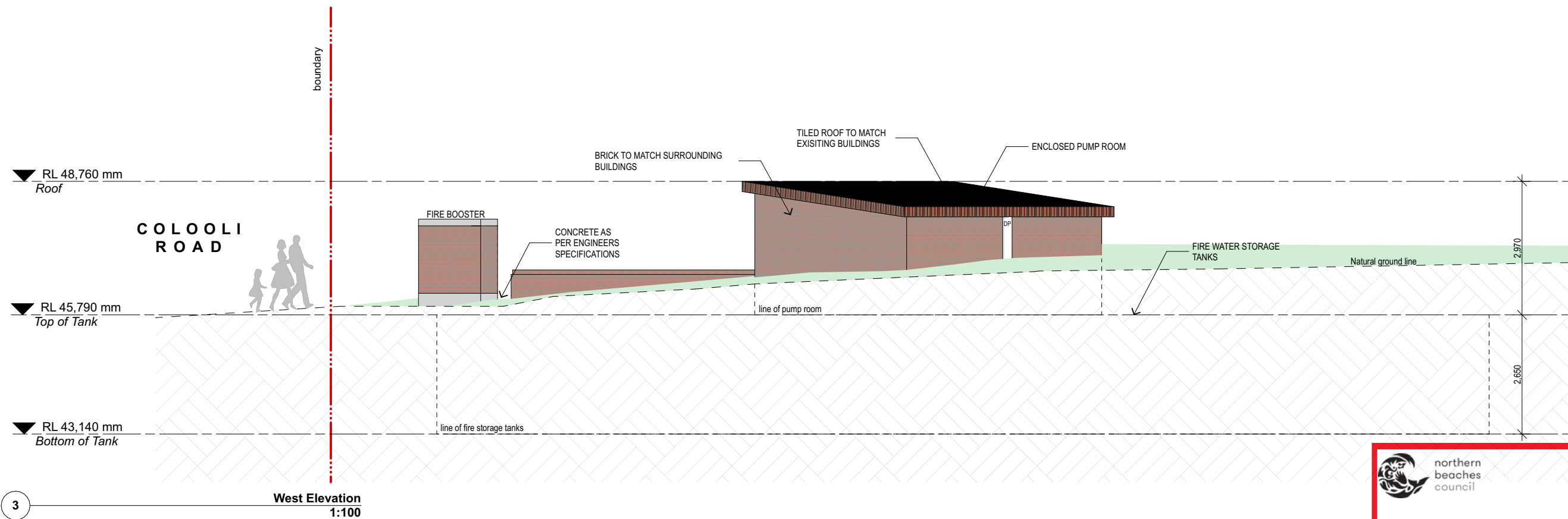
**RSL Life Care Narrabeen Fire Services**  
for RSL Life Care  
90 Veterans Parade Narrabeen NSW 2101 Australia  
lot 2641/2026 DP 752038

dwg no.  
**DA-210-01**

GA Elevations  
**North & East Elevation**

**FOR DA SUBMISSION**  
rev: **03**

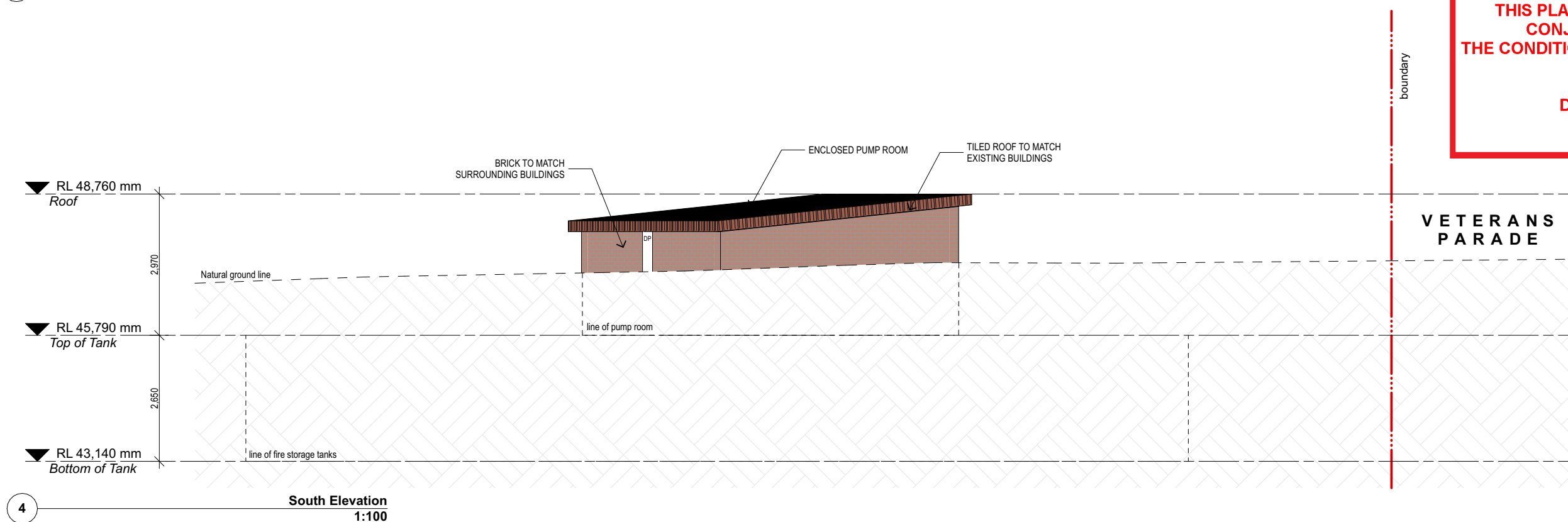
21008



 northern  
beaches  
council

**THIS PLAN IS TO BE READ IN  
CONJUNCTION WITH  
THE CONDITIONS OF DEVELOPMENT  
CONSENT**

**DA2022/1433**



**GLYDE**

unit 24, 47-55 john street  
leichhardt 2040 nsw australia  
M: 0414 336 436  
T: 02 8216 1839  
ABN: 27 227 626 896  
info@glydebautovich.com.au  
glydebautovich.com.au

**BAUTOVICH**

rev	date	revision notes	drawn by	checked by
01	21/03/22		PH	CG
02	14/07/22	Development Application Submission		CG
03	21/11/22	Development Application Revision	PH, HH	CG

This drawing is for approval only, not for construction. Copyright © Glyde Bautovich.



**RSL Life Care Narrabeen Fire Services** 21008  
for RSL Life Care  
90 Veterans Parade Narrabeen NSW 2101 Australia  
lot 2641/2026 DP 752038

dwg no.  
**DA-210-02**

GA Elevations  
**South & West Elevation**

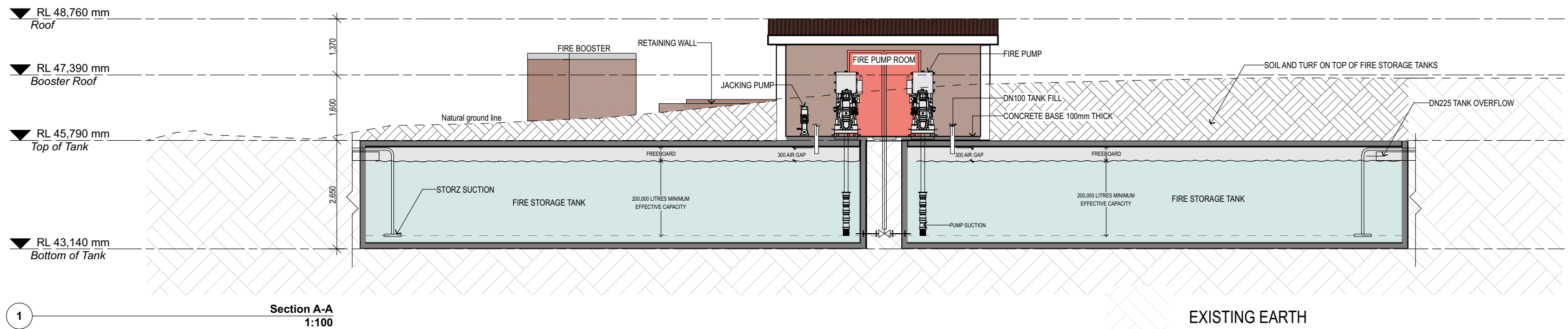
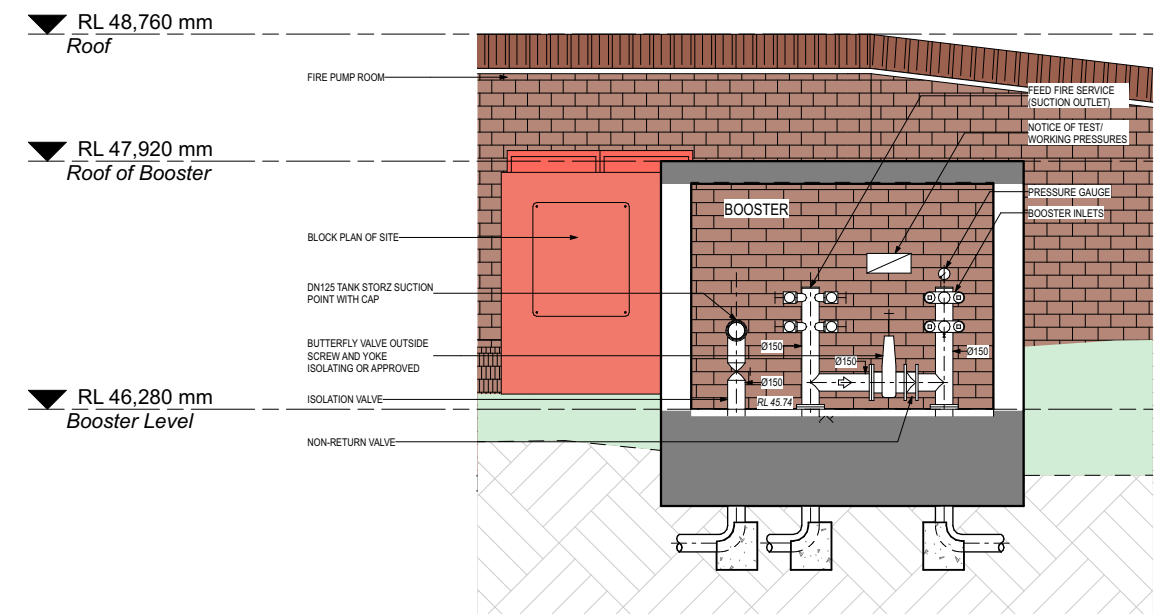
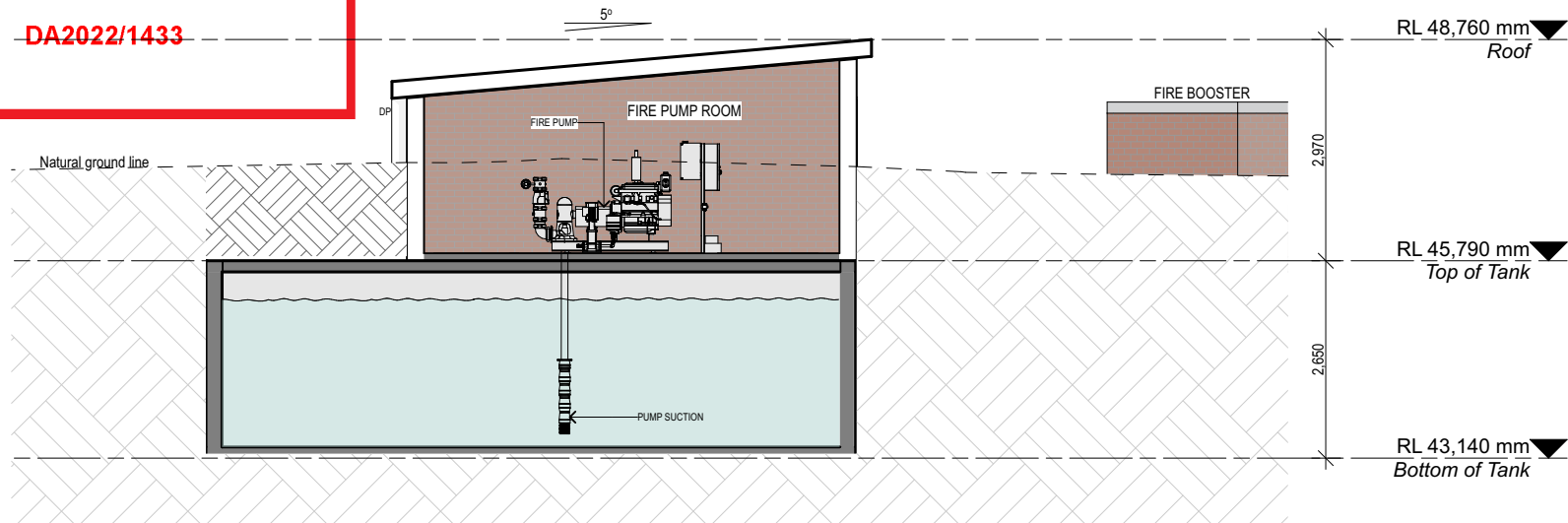
**FOR DA SUBMISSION**  
rev: **03**



 northern  
beaches  
council

THIS PLAN IS TO BE READ IN  
CONJUNCTION WITH  
THE CONDITIONS OF DEVELOPMENT  
CONSENT

DA2022/1433



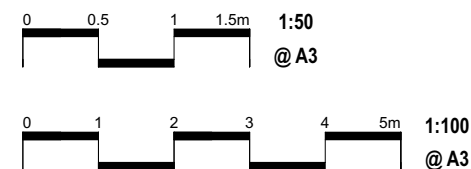
**GLYDE**

unit 24, 47-55 john street  
leichhardt 2040 nsw australia  
M: 0414 336 436  
T: 02 8216 1839  
ABN: 27 227 626 896  
info@glydebautovich.com.au  
glydebautovich.com.au

**BAUTOVICH**

rev	date	revision notes	drawn by	checked by
01	21/03/22		PH	CG
02	14/07/22	Development Application Submission		CG
03	21/11/22	Development Application Revision	PH, HH	CG

This drawing is for approval only, not for construction. Copyright © Glyde Bautovich.



EXISTING EARTH

PROPOSED SOIL

**RSL Life Care Narrabeen Fire Services** 21008

for RSL Life Care  
90 Veterans Parade Narrabeen NSW 2101 Australia  
lot 2641/2026 DP 752038

dwg no.  
**DA-310-01**

**GA Sections** **FOR DA SUBMISSION**

**Sections** **rev: 03**



 northern  
beaches  
council

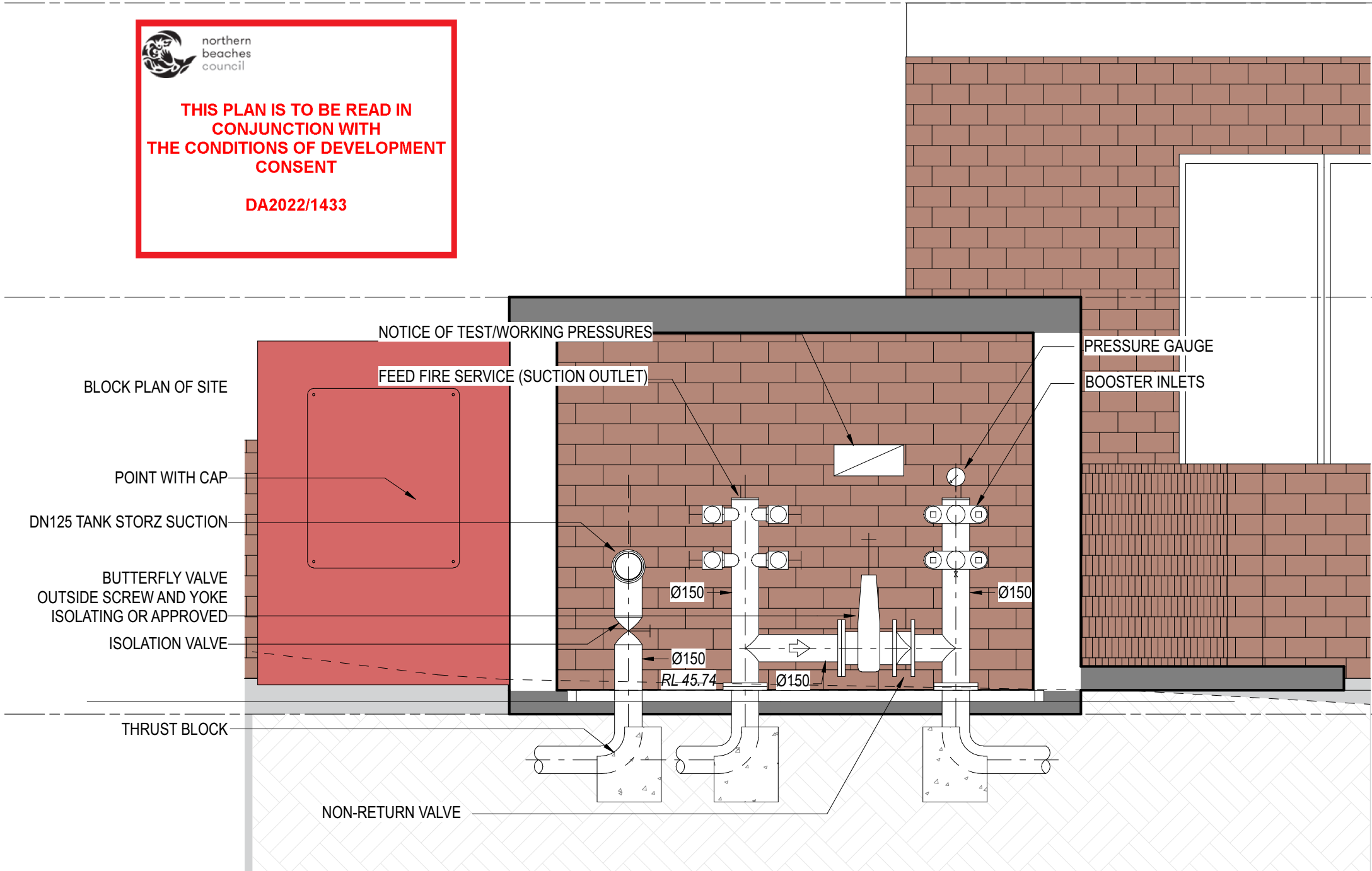
**THIS PLAN IS TO BE READ IN  
CONJUNCTION WITH  
THE CONDITIONS OF DEVELOPMENT  
CONSENT**

**DA2022/1433**

RL 48,624 mm ▼  
*Roof*

RL 47,390 mm ▼  
*Roof of Booster*

RL 45,640 mm ▼  
*Booster Level*



1 **Booster Section**  
1:20

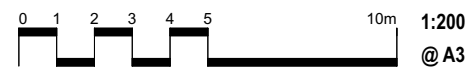
**GLYDE**

unit 24, 47-55 john street  
leichhardt 2040 nsw australia  
M: 0414 336 436  
T: 02 8216 1839  
ABN: 27 227 626 896  
info@glydebautovich.com.au  
glydebautovich.com.au

**BAUTOVICH**

rev	date	revision notes	drawn by	checked by
01	21/03/22		PH	CG
02	14/07/22	Development Application Submission		CG

This drawing is for approval only, not for construction. Copyright © Glyde Bautovich.



**RSL Life Care Narrabeen Fire Services** 21008  
for RSL Life Care  
90 Veterans Parade Narrabeen NSW 2101 Australia  
lot 2641/2026 DP 752038

dwg no.  
**DA-310-02**

GA Sections  
**Sections S3 S4**

**FOR DA SUBMISSION**  
rev: 01