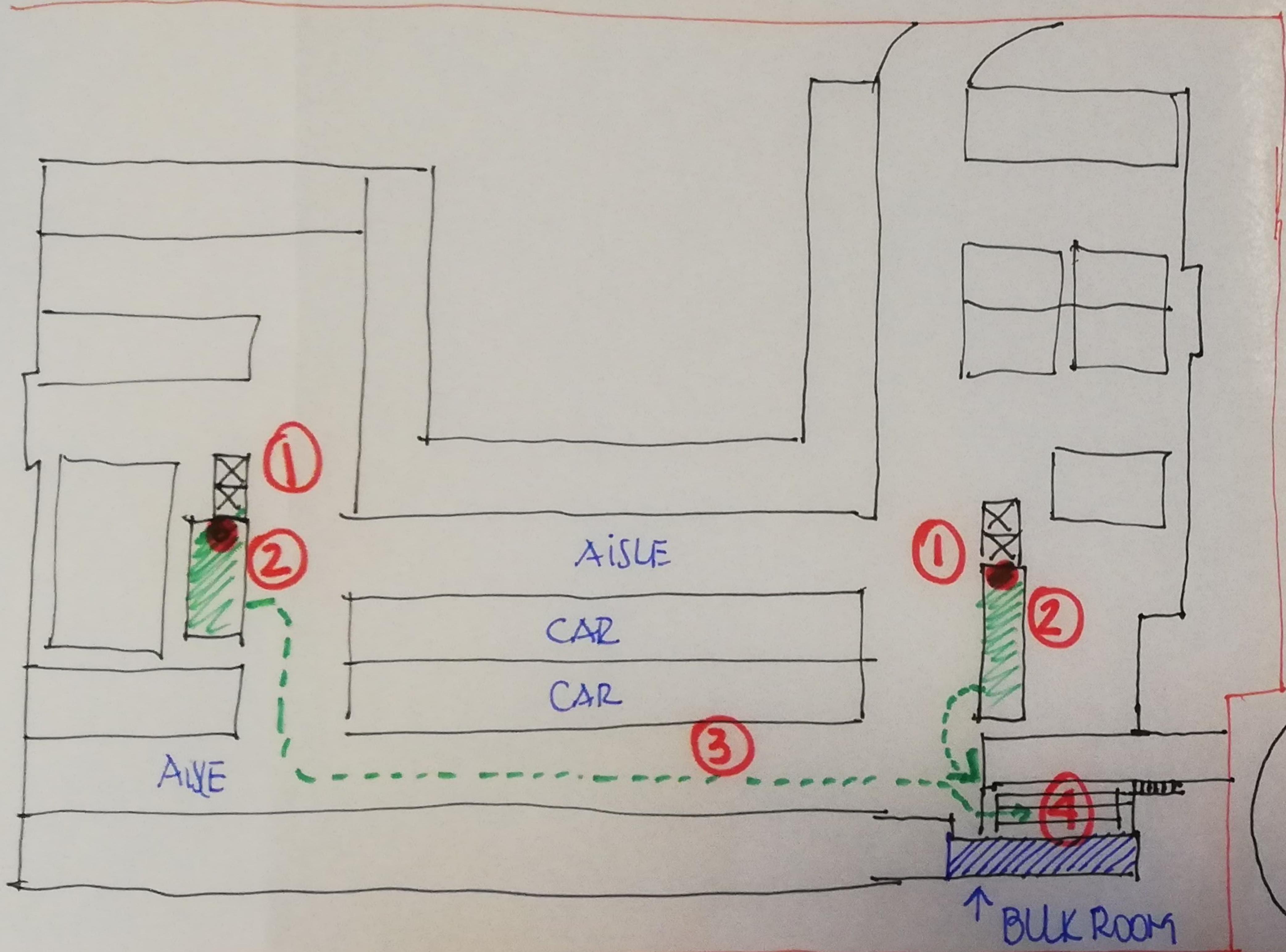


OPTION 01  
WITHIN SITE LARGER  
LOADING BAY

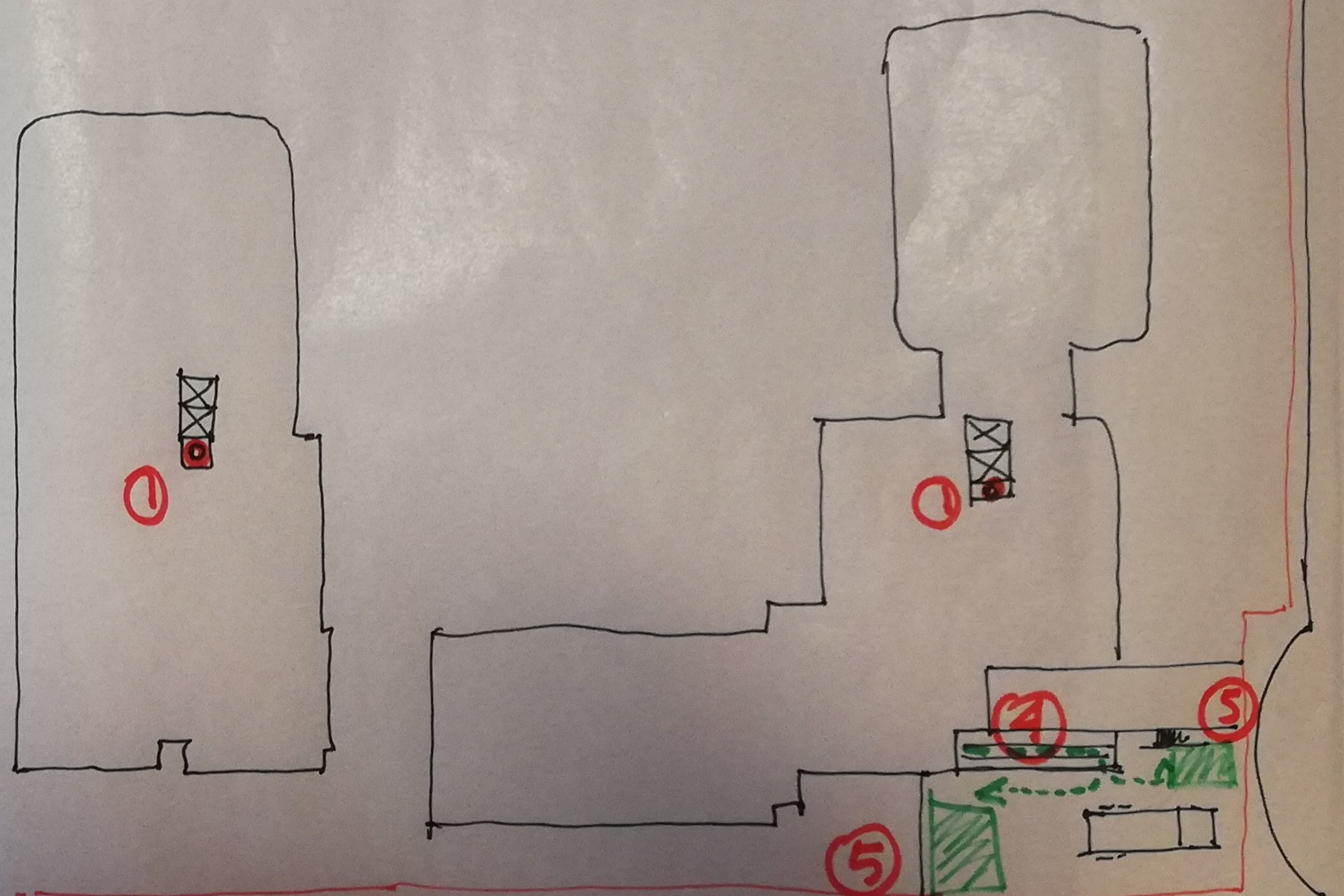
BASEMENT



- ① CHUTE
- ② GARBAGE IS STORED IN ROOM
- ③ A CONTRACTOR WILL MOVE THE BINS THROUGH THE AISLE TO THE

GROUND

SKYLINE STAGE 02  
GARBAGE MANAGEMENT

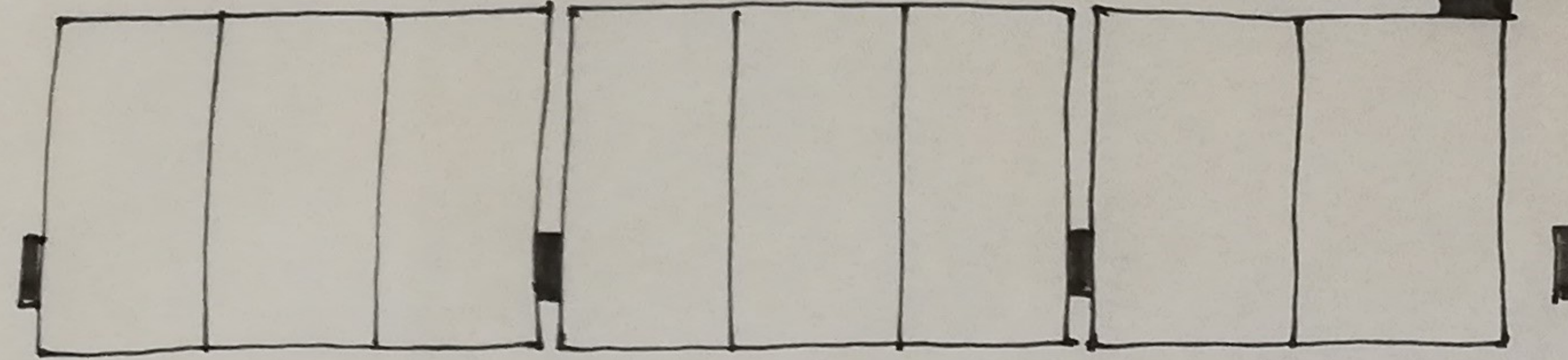
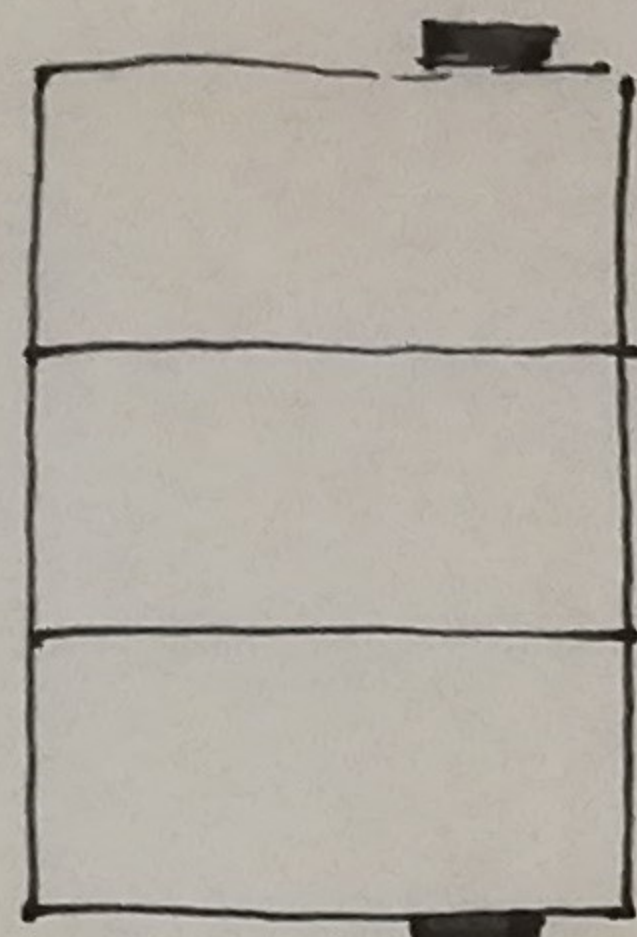


- ④ SERVICES PEDESTRIAN RAMP
- ⑤ FROM PEDESTRIAN RAMP BINS WILL BE PLACED AT A LOADING BAY AT GROUND LV
- ⑤ FINAL LOCATION OF BINS FOR COLLECTION

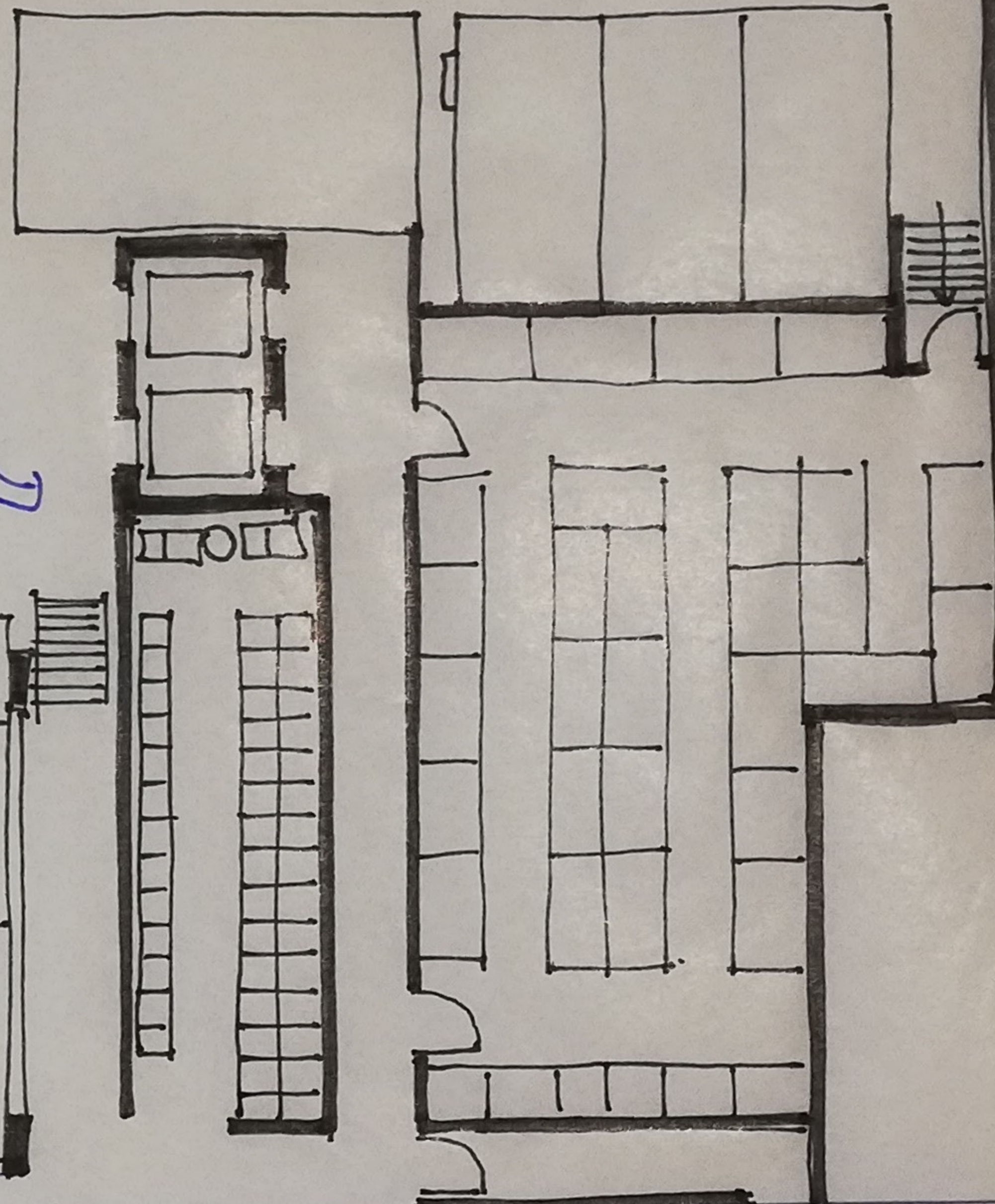
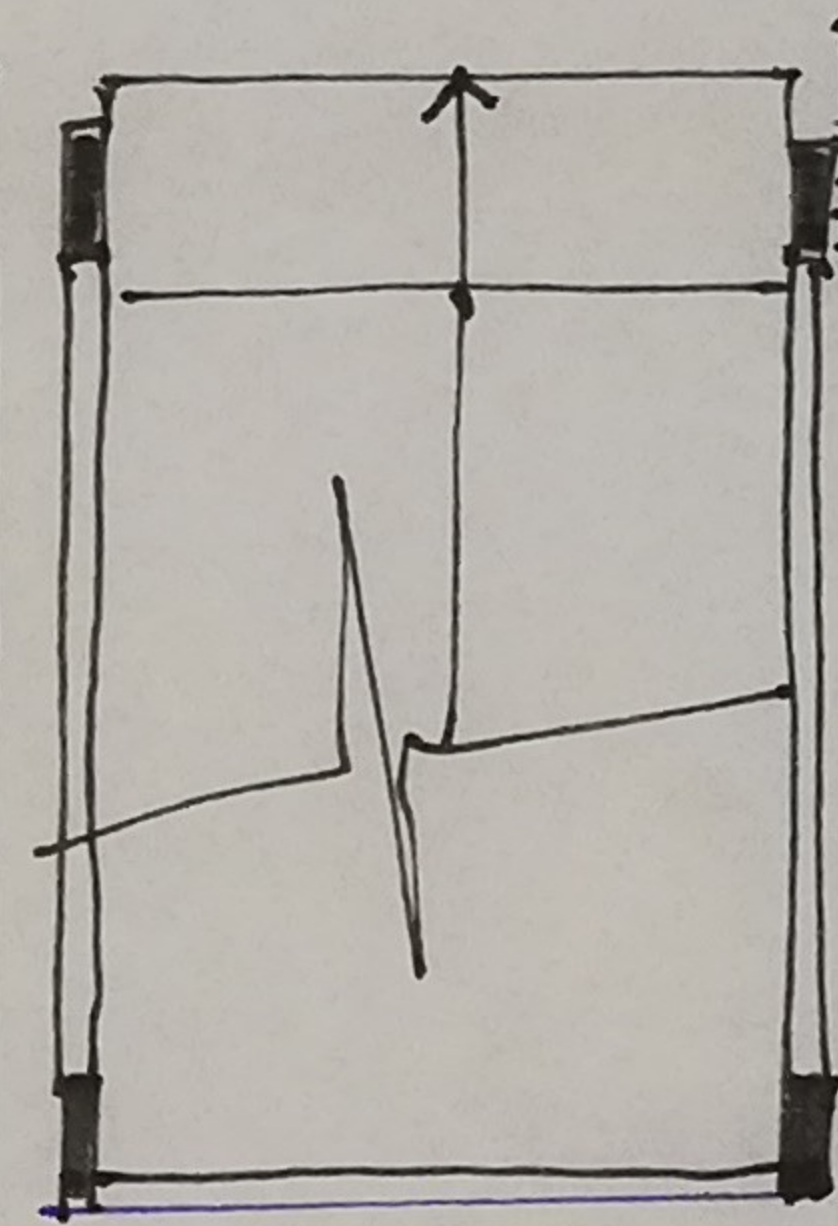
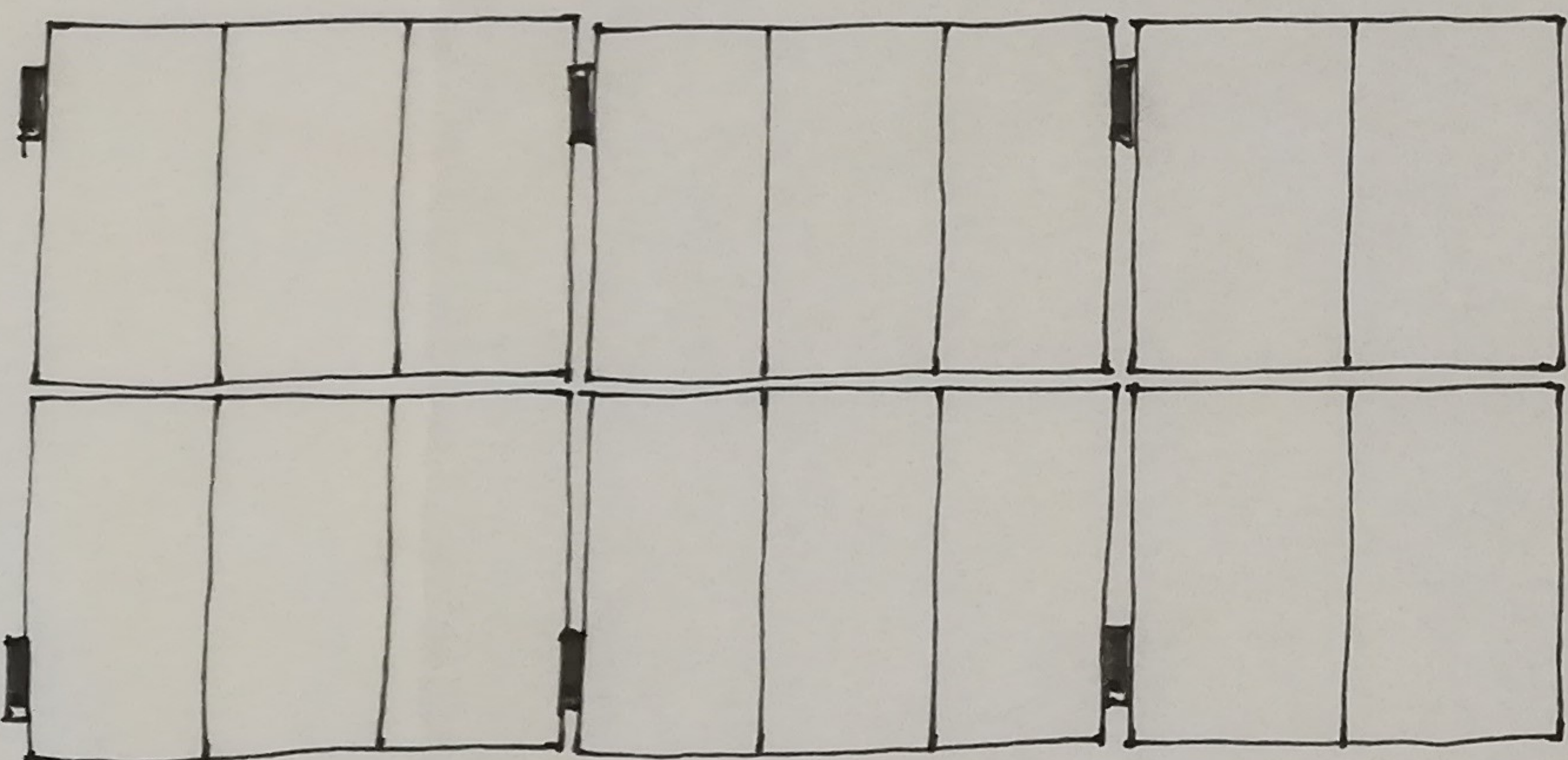


# OPTION 01

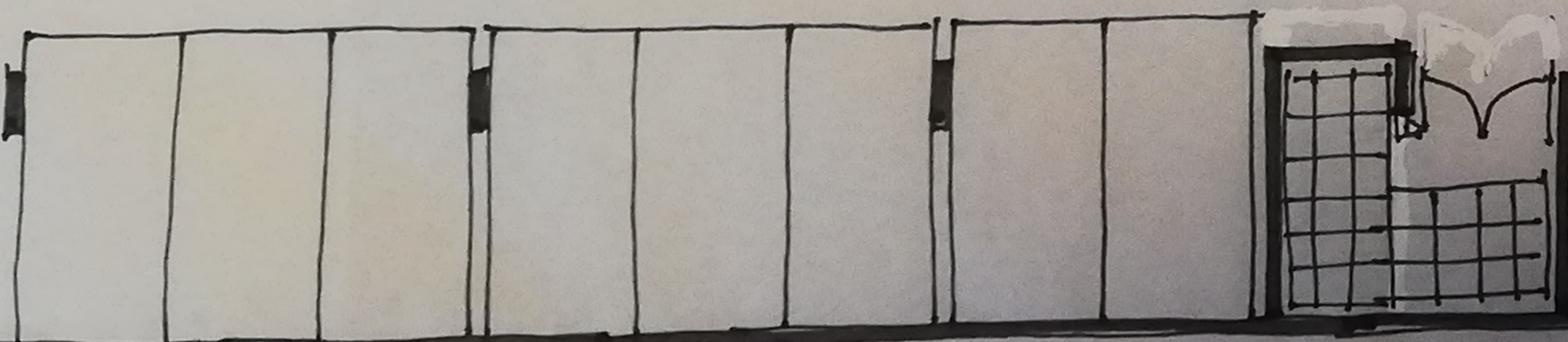
WITHIN SITE LARGER  
LOADING BAY



GARBAGE  
ROOM  
EAST TOWER



PEDESTRIAN  
SERVICES RAMP  
IN 1:8 SLOPE



30m<sup>2</sup> BULK STORAGE

FIRE  
EXIT

BASEMENT

# SKYLINE STAGE 02 GARBAGE MANAGEMENT

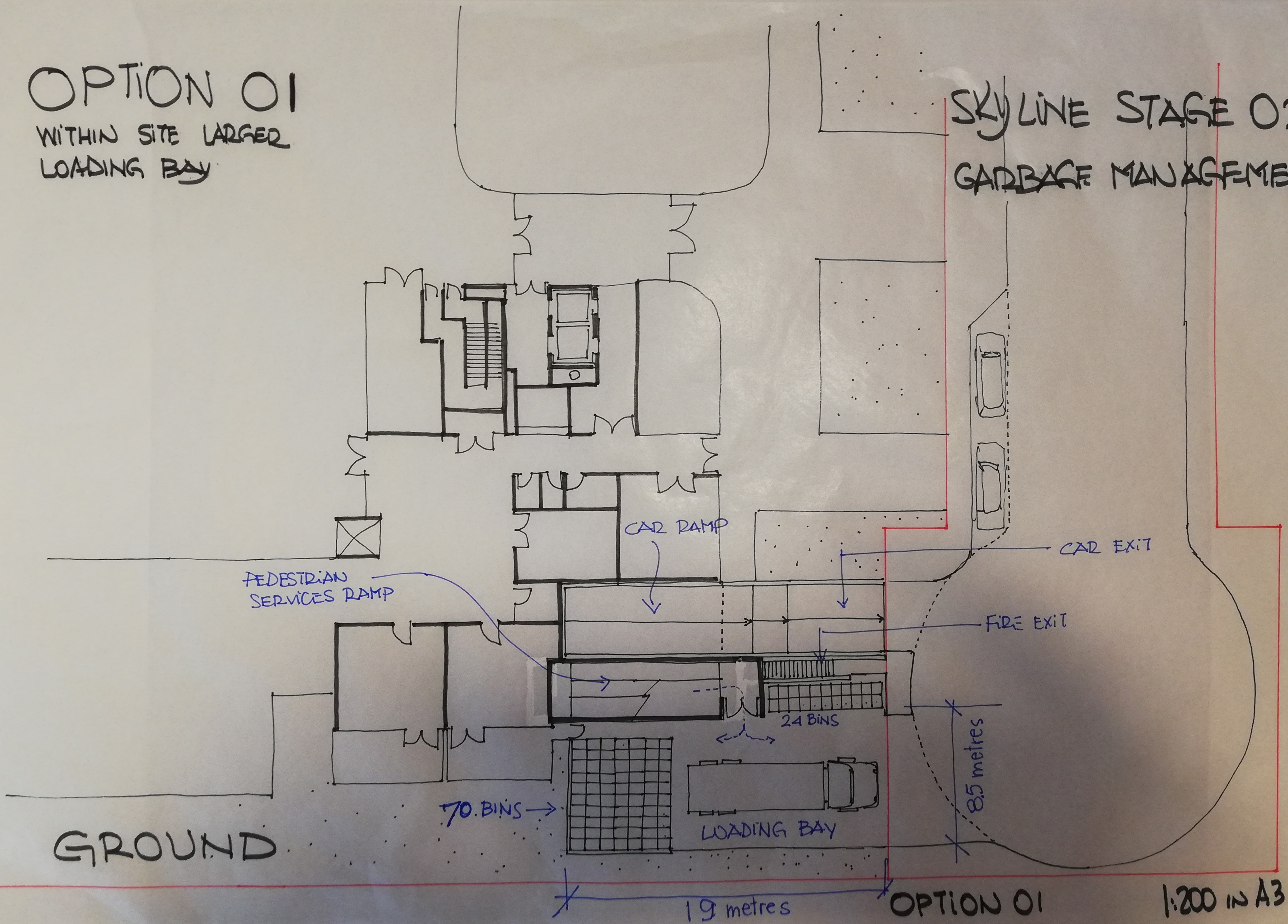
OPTION 01

1:200 IN A3



OPTION 01  
WITHIN SITE LARGER  
LOADING BAY

SKYLINE STAGE 02  
GARBAGE MANAGEMENT



GROUND

70 BINS

CAR RAMP

PEDESTRIAN SERVICES RAMP

24 BINS

LOADING BAY

FIRE EXIT

CAR EXIT

8.5 metres

19 metres

OPTION 01

1:200 IN A3