

- LEGEND**
- EXISTING WALLS
 - DA BRICK
 - DA DRESSED TIMBER
 - DA TIMBER
 - DA CONCRETE
 - DA GLASS
 - DA TILES
 - DA METAL
 - DA FABRIC

- NOTE:**
1. ALL EXISTING ROOF LEVELS, FLOORS, CEILINGS FOR EXISTING BUILDING INDICATED ON SURVEY
 2. ALL FLOOR TO CEILING HEIGHTS ARE AS EXISTING AND ARE INDICATED ON SURVEY.
 3. ALL DIMENSIONS TO BE VERIFIED ON SITE



01 OVERALL BUILDING - EXTERNAL ELEVATION 1
1:100@A1

FOR DA REVIEW

THIS PLAN IS TO BE READ IN CONJUNCTION WITH THE CONDITIONS OF DEVELOPMENT CONSENT
 DADA2019/0211

DATE 15.02.19
17.05.19

REVISION A
B

ISSUE REASON FOR DA REVIEW FOR DA REVIEW



CLIENT: HILROK PROPERTIES PTY LTD.

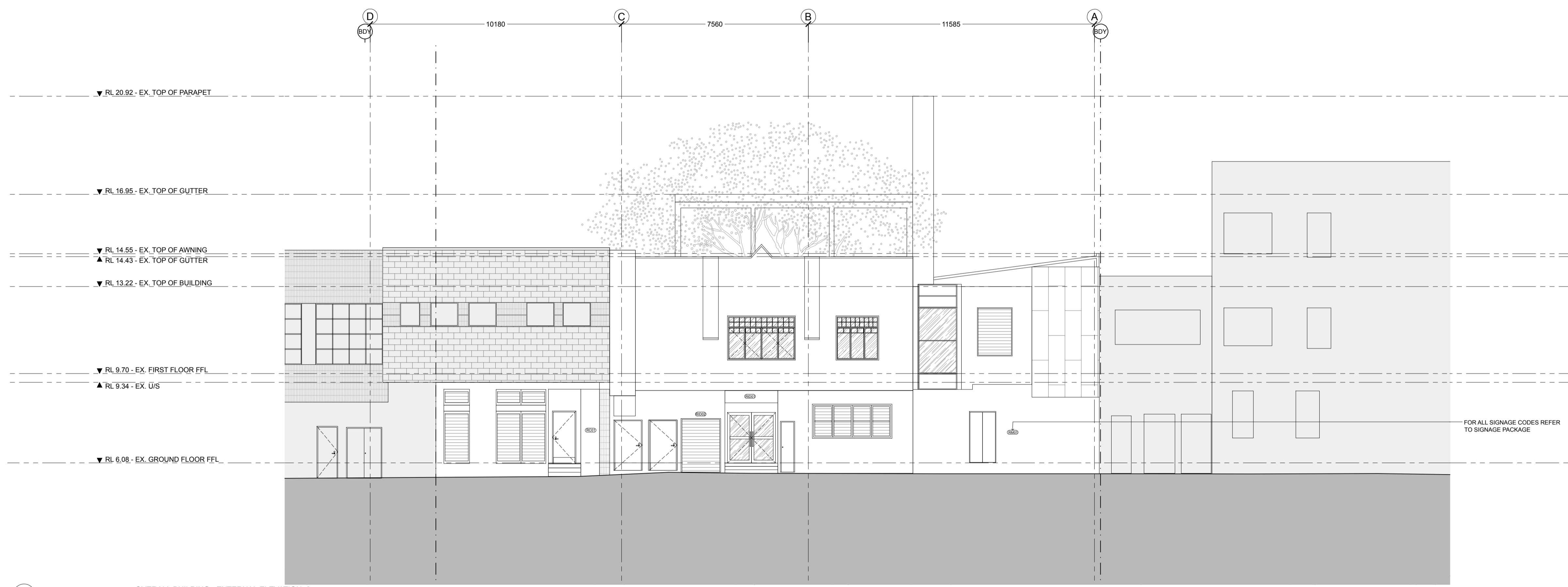
PROJECT: THE IVANHOE HOTEL
25, 27 AND 31 THE CORSO
MANLY NSW 2095

DRAWING: OVERALL BUILDING
PROPOSED SOUTH ELEVATION - THE CORSO
CHECK ALL DIMENSIONS ON SITE PRIOR TO THE COMMENCEMENT OF WORK
USE FIGURED DIMENSIONS ONLY DO NOT SCALE
COMPLY WITH ALL RELEVANT AUTHORITIES REQUIREMENTS
COMPLY WITH BUILDING CODE OF AUSTRALIA
COPYRIGHT IN ALL DOCUMENTS AND DRAWINGS PREPARED BY ALEXANDER & CO

PROJECT NO. 0394
SCALE@A1 SCALE@A3
1:100 1:200
DWG NO. DA-EXX-001
DRAWN MD
CHECKED LH
ISSUE B

- LEGEND**
- EXISTING WALLS
 - DA BRICK
 - DA DRESSED TIMBER
 - DA TIMBER
 - DA CONCRETE
 - DA GLASS
 - DA TILES
 - DA METAL
 - DA FABRIC

- NOTE:**
1. ALL EXISTING ROOF LEVELS, FLOORS, CEILINGS FOR EXISTING BUILDING INDICATED ON SURVEY
 2. ALL FLOOR TO CEILING HEIGHTS ARE AS EXISTING AND ARE INDICATED ON SURVEY.
 3. ALL DIMENSIONS TO BE VERIFIED ON SITE



01 OVERALL BUILDING - EXTERNAL ELEVATION 2
1:100@A1

FOR ALL SIGNAGE CODES REFER TO SIGNAGE PACKAGE

FOR DA REVIEW


THIS PLAN IS TO BE READ IN CONJUNCTION WITH THE CONDITIONS OF DEVELOPMENT CONSENT
 DADA2019/0211

DATE 15.02.19 REVISION A ISSUE REASON FOR DA REVIEW



CLIENT: HILROK PROPERTIES PTY LTD.

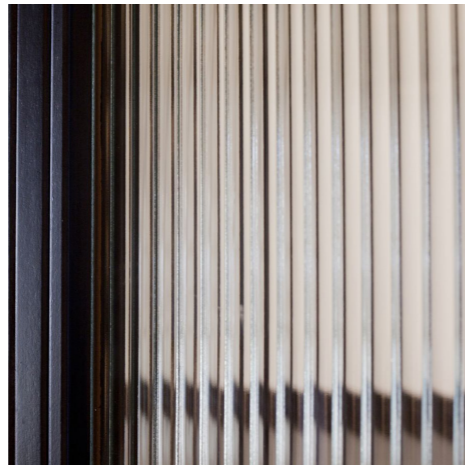
PROJECT: THE IVANHOE HOTEL
25, 27 AND 31 THE CORSO
MANLY NSW 2095

DRAWING: OVERALL BUILDING
PROPOSED NORTH ELEVATION - MARKET PLACE
CHECK ALL DIMENSIONS ON SITE PRIOR TO THE COMMENCEMENT OF WORK
USE FIGURED DIMENSIONS ONLY DO NOT SCALE
COMPLY WITH ALL RELEVANT AUTHORITIES REQUIREMENTS
COMPLY WITH BUILDING CODE OF AUSTRALIA
COMPLY WITH ALL RELEVANT AUSTRALIAN STANDARDS
COPYRIGHT IN ALL DOCUMENTS AND DRAWINGS PREPARED BY ALEXANDER & CO

PROJECT NO. 0394	DRAWN MD
SCALE@A1 1:100	CHECKED LM
SCALE@A3 1:200	ISSUE A
DWG NO. DA-EXX-002	



01 RENDER
CODE: RND 01



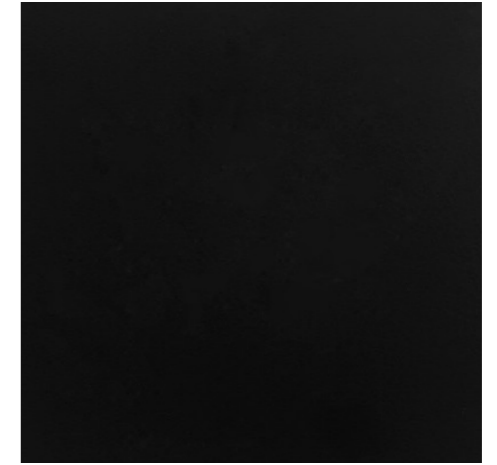
02 FLUTED GLASS
CODE: GLS 01



03 WHITE STONE SKIRTING
CODE: STN 01



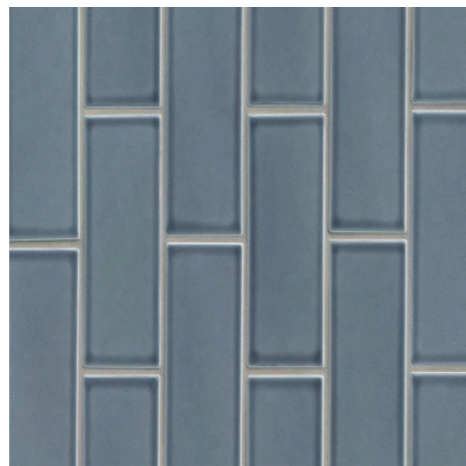
04 TIMBER
CODE: TMB 01



05 BLACK TIMBER FRAME
CODE: TMB 02



06 ROSE GLAZED TILE
CODE: TIL 01



07 BLUE GLAZED TILE
CODE: TIL 02



08 WHITE V GROOVE TIMBER
CODE: LNG 01



09 TIMBER PANELING
CODE: LNG 02



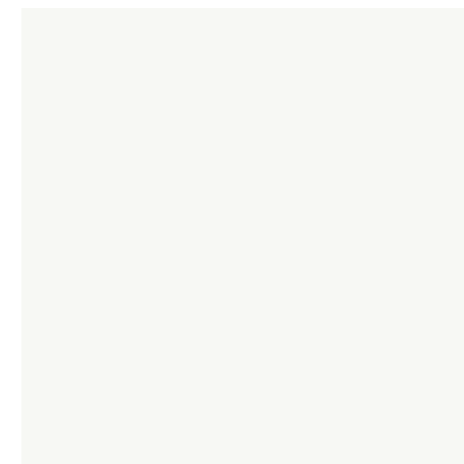
10 TIMBER CRICKET BAT PANELING
CODE: LNG 03



11 PAINT - DULUX BALTIC
CODE: PAF 01



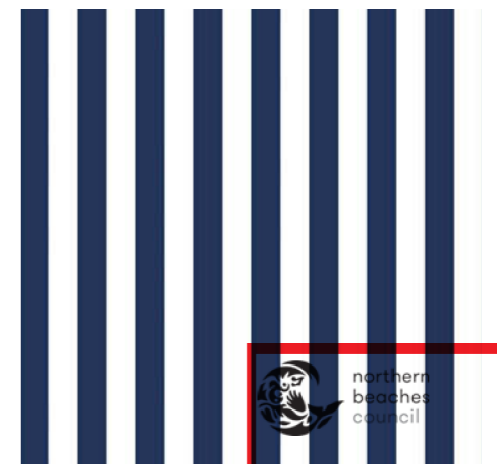
12 PAINT - DULUX CALF SKIN
CODE: PAF 02



13 PAINT - DULUX VIVID WHITE
CODE: PAF 03



14 BLACK METAL
CODE: MTL 01



15 AWNING FABRIC
CODE: FBR 01

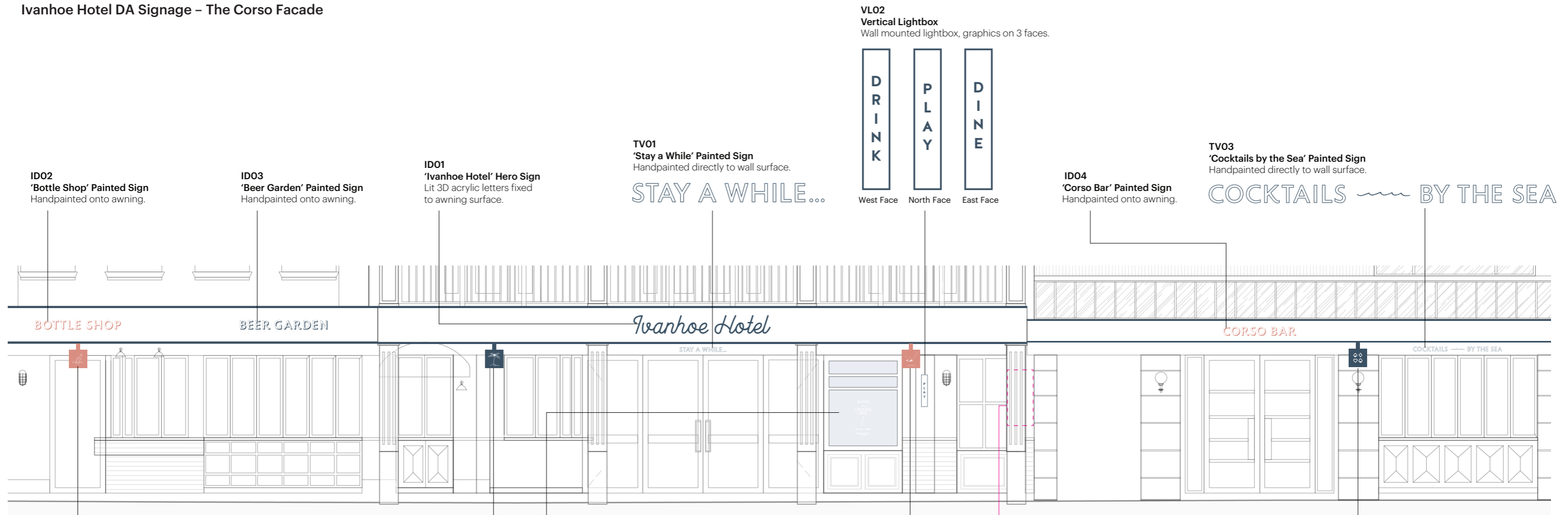
THIS PLAN IS TO BE READ IN CONJUNCTION WITH THE CONDITIONS OF DEVELOPMENT CONSENT
DADA2019/0211



FOR DA REVIEW



Ivanhoe Hotel DA Signage – The Corso Facade



SOUTH ELEVATION (THE CORSO FACADE)

SL01
 'Bottle Shop' Suspended Lightbox
 1600x350x350 lightbox bolted to under awning, graphics on 4 faces.



West & East Face



Base Face



North Face



South Face

SL02
 'Beer Garden' Suspended Lightbox
 1600x350x350 lightbox bolted to under awning, graphics on 4 faces.



West & East Face



Base Face



North Face



South Face

GV02
 Main Entry Glazing Vinyl
 Graphics in matt white vinyl applied to glazing surface. (Note: blue indicates transparent glass).



SL03
 'Ivanhoe Hotel' Suspended Lightbox
 1600x350x350 lightbox bolted to under awning, graphics on 4 faces.



West & East Face



Base Face



North Face



South Face

TV02
 Painted Wall Sign
 Handpainted to wall surface.



SL04
 'Players Lounge' Suspended Lightbox
 1600x350x350 lightbox bolted to under awning, graphics on 4 faces.



West & East Face



Base Face



North Face



South Face

Ivanhoe Hotel The Corso Facade Elevation & Sign Types (not to scale)

Issued for Review

Revisions

01	190213	Issued for Review
02	190516	Issued for Review

Client



Ivanhoe
HOTEL

Project

Ivanhoe Hotel
27 The Corso, Manly NSW 2095

Date

190516

Job number

TIH002

Reproduction of the whole or part of this document constitutes an infringement of copyright. The information ideas and concepts contained in this document are confidential. The recipient(s) of this document is prohibited from disclosing such information, ideas and concepts to any person without the prior written consent of The Bar Brand People.



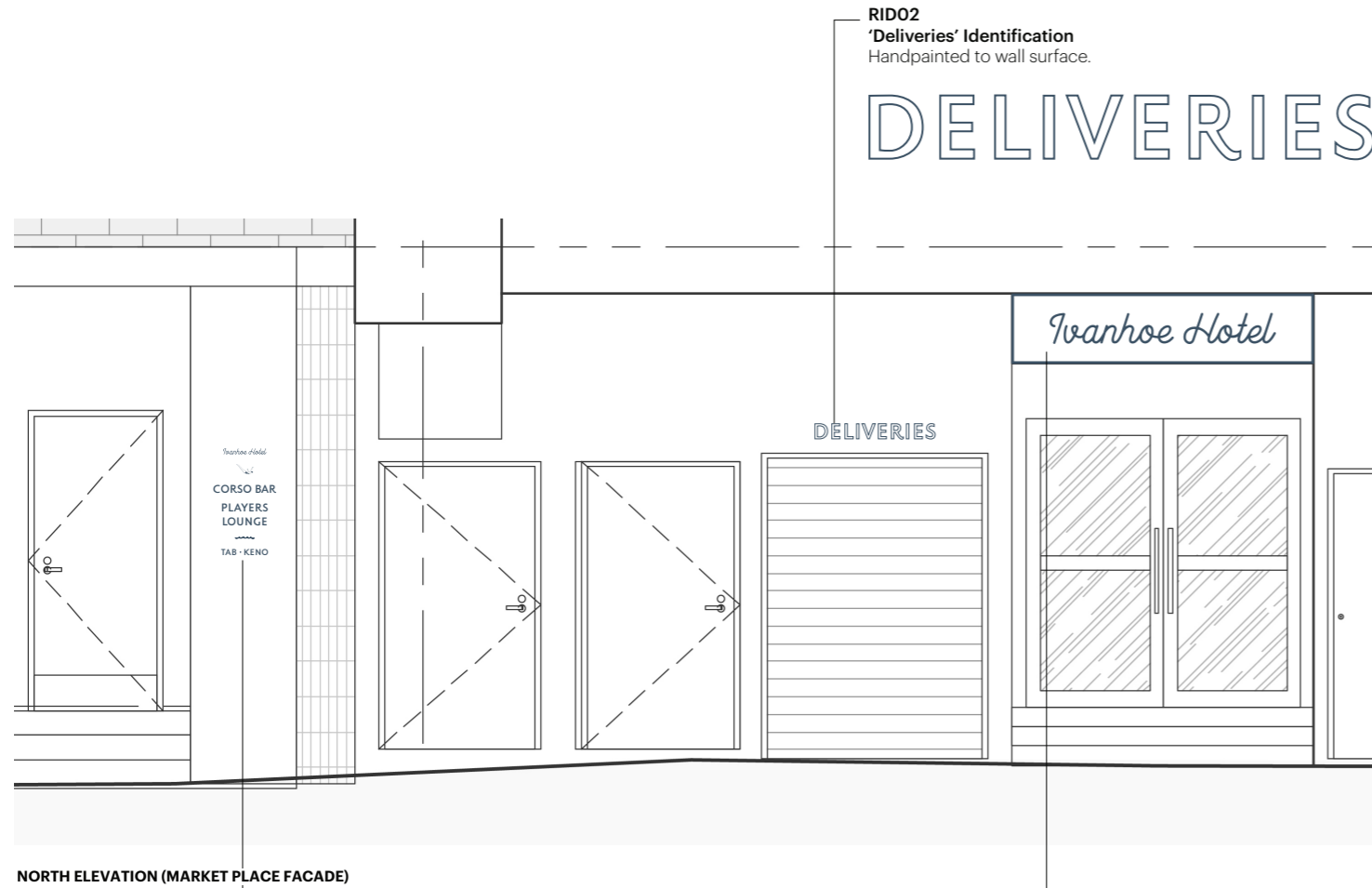
THIS PLAN IS TO BE READ IN CONJUNCTION WITH THE CONDITIONS OF DEVELOPMENT CONSENT

DADA2019/0211

ISSUED FOR REVIEW

The Bar Brand People
M +61 4 3351 2949
gemma@thebarbrandpeople.com

Ivanhoe Hotel DA Signage – Market Place Facade



RC01
Painted Wall Sign
Handpainted to wall surface.

RID01
'Ivanhoe Hotel' Rear Entry Sign
2130x500mm acrylic opal internally lit panel,
wall mounted above doors.

Ivanhoe Hotel



CORSO BAR
PLAYERS
LOUNGE

TAB • KENO



RM01
Market Place Wall Mural
Hand painted to wall surface.



Mural artwork detail

Ivanhoe Hotel Market Place Facade Elevation & Sign Types (not to scale)

Issued for Review	
Revisions	
01 190213	Issued for Review
02 190516	Issued for Review
03 190523	Issued for Review

Client




Ivanhoe
HOTEL

Project	
Ivanhoe Hotel 27 The Corso, Manly NSW 2095	

Date	Job number
190523	TIH002

Reproduction of the whole or part of this document constitutes an infringement of copyright. The information ideas and concepts contained in this document are confidential. The recipient(s) of this document is prohibited from disclosing such information, ideas and concepts to any person without the prior written consent of The Bar Brand People.



THIS PLAN IS TO BE READ IN CONJUNCTION WITH THE CONDITIONS OF DEVELOPMENT CONSENT

DADA2019/0211

ISSUED FOR REVIEW

The Bar Brand People
M +61 4 3351 2949
gemma@thebarbrandpeople.com