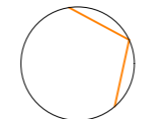




DKO Architecture (NSW) Pty Ltd  
 42 Davies Street  
 Surry Hills, NSW 2010  
 ABN: 81956706590  
 NSW: Nominated Architects  
 Koos de Keijzer 5767 | David Randerson 8542

T +61 2 8346 4500  
 info@DKO.com.au  
 www.DKO.com.au

© DKO Architecture (NSW) Pty Ltd  
 Except as allowed under copyright act, no part of this drawing may be reproduced or otherwise dealt with without written permission of DKO Architecture.



Rev.	Date	By	Ckd	Description
01	21/11/2019	WL	IL	DA SUBMISSION
02	26/11/2019	WL	IL	DA SUBMISSION
A	29/11/2019	WL	IL	DA SUBMISSION

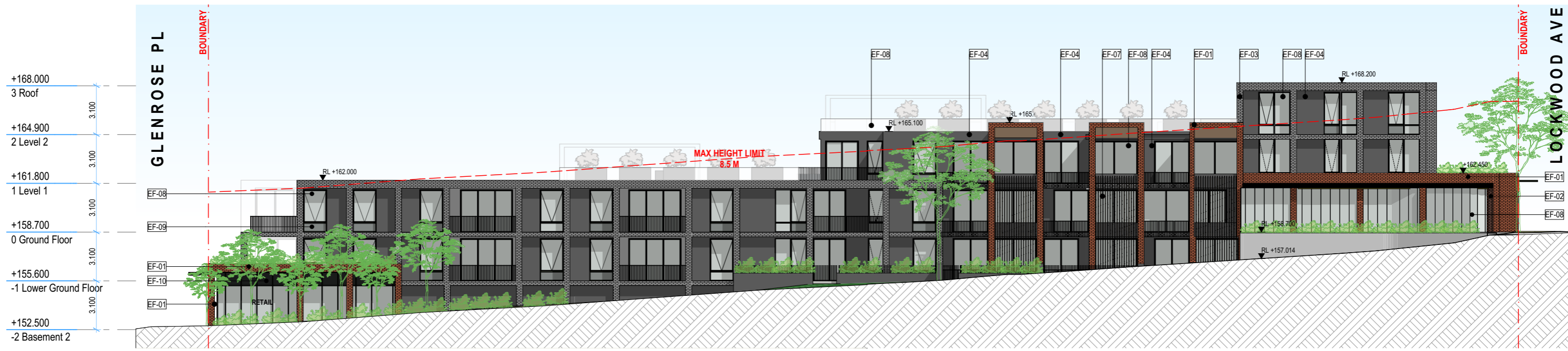
Project Name	28 Lockwood Av. Belrose	Project Number	11574
Project Address	28 Lockwood Ave, Belrose, NSW 2085	Drawing Name	Site Plan
		Scale	1:400 @A3
		Date	Aug 2019
Client	Platinum Property Group	Drawing Number	DA102
		Revision	A

**LEGEND:**

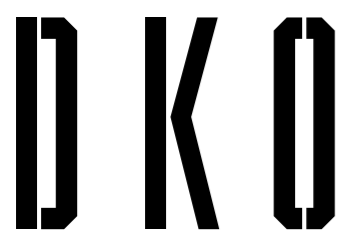
	<b>EF-01</b> Finish: Face Brick Product: Boral Brick Colour: Amber Glow - Light Natural		<b>EF-05</b> Finish: Painted Concrete Product: Pre-Cast Concrete Colour: Delux Ticking - Dark Grey		<b>EF-09</b> Finish: Glass Product: Glass Colour: Grey
	<b>EF-02</b> Finish: Face Brick Product: Boral Brick Colour: Copper Pearl - Aged Natural		<b>EF-06</b> Finish: Painted Concrete Product: Pre-Cast Concrete Colour: Delux Leadman - Dark Grey		<b>EF-10</b> Finish: Glass Product: Glass Colour: Dark Grey
	<b>EF-03</b> Finish: Face Brick Product: Boral Brick Colour: Contempo Madrid Blanco - White		<b>EF-07</b> Finish: Painted Metal Product: Metal Colour: Delux Black		
	<b>EF-04</b> Finish: Painted Concrete Product: Pre-Cast Concrete Colour: Delux Guild Grey		<b>EF-08</b> Finish: Glass Product: Glass Colour: Clear		



**E-01** South Elevation  
1:250



**E-02** West Elevation  
1:250



DKO Architecture (NSW) Pty Ltd  
42 Davies Street  
Surry Hills, NSW 2010  
ABN: 81956706590  
NSW: Nominated Architects  
Koos de Keijzer 5767 | David Randerson 8542



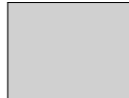

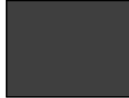
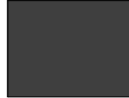




T +61 2 8346 4500  
info@DKO.com.au  
www.DKO.com.au

© DKO Architecture (NSW) Pty Ltd  
Except as allowed under copyright act, no part of this drawing may be reproduced or otherwise dealt with without written permission of DKO Architecture.

Rev.	Date	By	Ckd	Description
01	15/11/2019	WL	IL	CONSULTANT CO-ORDINATION
02	21/11/2019	WL	IL	DA
03	26/11/2019	WL	IL	DA
A	29/11/2019	WL	IL	DA
B	29/01/2020	OS	IL	DA

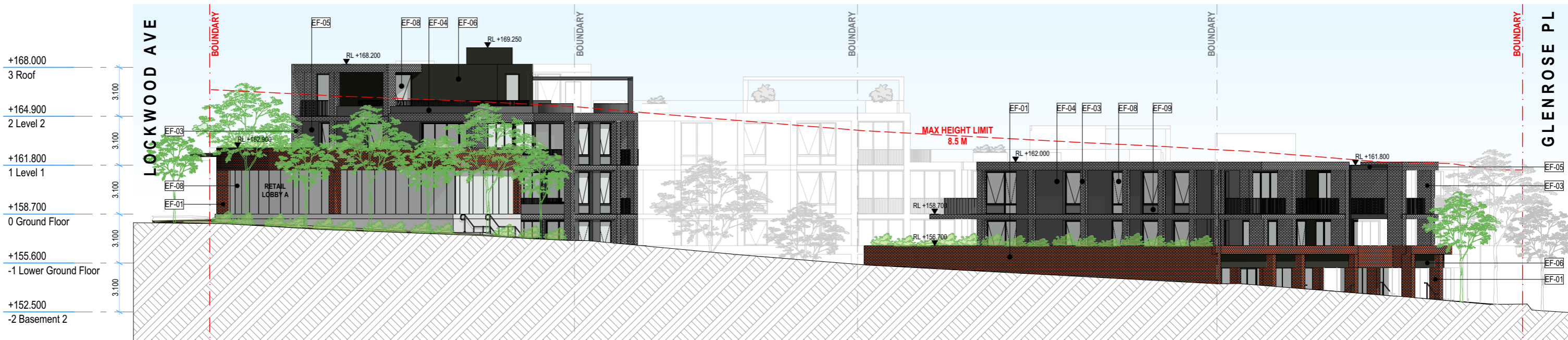
Project Name	28 Lockwood Av. Belrose	Project Number	11574
Project Address	28 Lockwood Ave, Belrose, NSW 2085	Drawing Name	Elevations - Sheet 1
		Scale	1:250 @A3
		Date	Aug 2019
Client	Platinum Property Group	Drawing Number	<b>DA300</b>
		Revision	<b>B</b>

**LEGEND:**

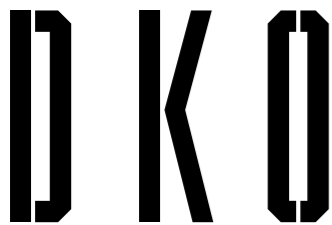
	<b>EF-01</b> Finish: Face Brick Product: Boral Brick Colour: Amber Glow - Light Natural		<b>EF-05</b> Finish: Painted Concrete Product: Pre-Cast Concrete Colour: Delux Ticking - Dark Grey		<b>EF-09</b> Finish: Glass Product: Glass Colour: Grey
	<b>EF-02</b> Finish: Face Brick Product: Boral Brick Colour: Copper Pearl - Aged Natural		<b>EF-06</b> Finish: Painted Concrete Product: Pre-Cast Concrete Colour: Delux Leadman - Dark Grey		<b>EF-10</b> Finish: Glass Product: Glass Colour: Dark Grey
	<b>EF-03</b> Finish: Face Brick Product: Boral Brick Colour: Contempo Madrid Blanco - White		<b>EF-07</b> Finish: Painted Metal Product: Metal Colour: Delux Black		
	<b>EF-04</b> Finish: Painted Concrete Product: Pre-Cast Concrete Colour: Delux Guild Grey		<b>EF-08</b> Finish: Glass Product: Glass Colour: Clear		



**E-03** North Elevation  
1:250



**E-04** East Elevation  
1:250



DKO Architecture (NSW) Pty Ltd  
42 Davies Street  
Surry Hills, NSW 2010  
ABN: 81956706590  
NSW: Nominated Architects  
Koos de Keijzer 5767 | David Randerson 8542

T +61 2 8346 4500  
info@DKO.com.au  
www.DKO.com.au

© DKO Architecture (NSW) Pty Ltd  
Except as allowed under copyright act, no part of this drawing may be reproduced or otherwise dealt with without written permission of DKO Architecture.

Rev.	Date	By	Ckd	Description
01	15/11/2019	WL	IL	CONSULTANT CO-ORDINATION
02	21/11/2019	WL	IL	DA
03	26/11/2019	WL	IL	DA
A	29/11/2019	WL	IL	DA
B	29/01/2020	OS	IL	DA

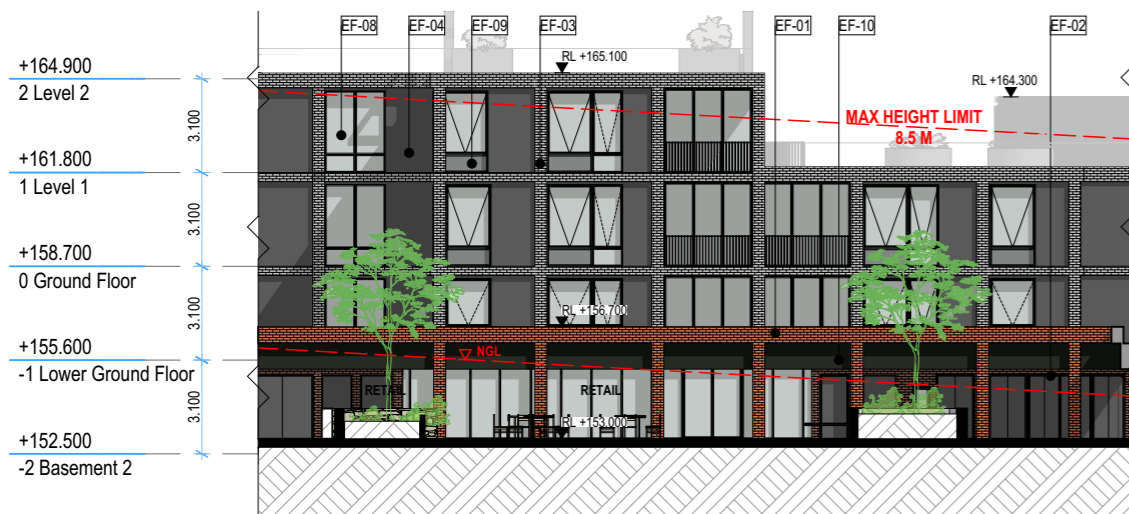
Project Name	28 Lockwood Av. Belrose	Project Number	11574
Project Address	28 Lockwood Ave, Belrose, NSW 2085	Drawing Name	Elevations - Sheet 2
		Scale	1:250 @A3
		Date	Aug 2019
Client	Platinum Property Group	Drawing Number	<b>DA301</b>
		Revision	<b>B</b>

**LEGEND:**

	<b>EF-01</b> Finish: Face Brick Product: Boral Brick Colour: Amber Glow - Light Natural		<b>EF-05</b> Finish: Painted Concrete Product: Pre-Cast Concrete Colour: Delux Ticking - Dark Grey		<b>EF-09</b> Finish: Glass Product: Glass Colour: Grey
	<b>EF-02</b> Finish: Face Brick Product: Boral Brick Colour: Copper Pearl - Aged Natural		<b>EF-06</b> Finish: Painted Concrete Product: Pre-Cast Concrete Colour: Delux Leadman - Dark Grey		<b>EF-10</b> Finish: Glass Product: Glass Colour: Dark Grey
	<b>EF-03</b> Finish: Face Brick Product: Boral Brick Colour: Contempo Madrid Blanco - White		<b>EF-07</b> Finish: Painted Metal Product: Metal Colour: Delux Black		
	<b>EF-04</b> Finish: Painted Concrete Product: Pre-Cast Concrete Colour: Delux Guild Grey		<b>EF-08</b> Finish: Glass Product: Glass Colour: Clear		



**E-05** North Internal Elevation  
1:250



**E-06** West Internal Elevation  
1:250



DKO Architecture (NSW) Pty Ltd  
42 Davies Street  
Surry Hills, NSW 2010  
ABN: 81956706590  
NSW: Nominated Architects  
Koos de Keijzer 5767 | David Randerson 8542

T +61 2 8346 4500  
info@DKO.com.au  
www.DKO.com.au

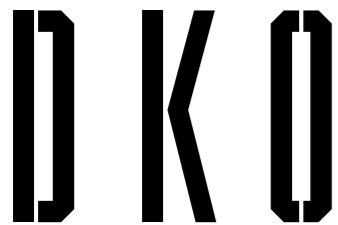
© DKO Architecture (NSW) Pty Ltd  
Except as allowed under copyright act, no part of this drawing may be reproduced or otherwise dealt with without written permission of DKO Architecture.

Rev.	Date	By	Ckd	Description
01	15/11/2019	WL	IL	CONSULTANT CO-ORDINATION
02	21/11/2019	WL	IL	DA
03	26/11/2019	WL	IL	DA
A	29/11/2019	WL	IL	DA
B	29/01/2020	OS	IL	DA

Project Name	28 Lockwood Av. Belrose	Project Number	11574
Project Address	28 Lockwood Ave, Belrose, NSW 2085	Drawing Name	Elevations - Sheet 3
		Scale	1:10, 1:250 @A3
		Date	Aug 2019
Client	Platinum Property Group	Drawing Number	<b>DA302</b>
		Revision	<b>B</b>



**Photomontage View Along Lockwood Avenue**



DKO Architecture (NSW) Pty Ltd  
 42 Davies Street  
 Surry Hills, NSW 2010  
 ABN: 81956706590  
 NSW: Nominated Architects  
 Koos de Keijzer 5767 | David Randerson 8542

T +61 2 8346 4500  
 info@DKO.com.au  
 www.DKO.com.au

© DKO Architecture (NSW) Pty Ltd  
 Except as allowed under copyright act, no part of this  
 drawing may be reproduced or otherwise dealt with  
 without written permission of DKO Architecture.

Rev.	Date	By	Ckd	Description
01	21/11/2019	WL	IL	DA SUBMISSION
02	26/11/2019	WL	IL	DA SUBMISSION
A	29/11/2019	WL	IL	DA SUBMISSION

Project Name  
 Project Address

28 Lockwood Av. Belrose  
 28 Lockwood Ave,  
 Belrose, NSW 2085

Project Number  
 Drawing Name  
 Scale  
 Date

11574  
 Perspectives - Sheet 1  
 @A3  
 Aug 2019

Client

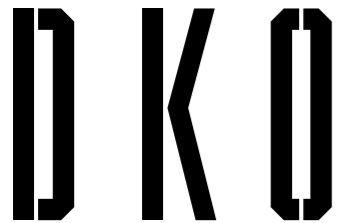
Platinum Property Group

Drawing Number  
 Revision

**DA303**  
**A**



Photomontage View Along Glenrose Pl / Ashworth Ave



DKO Architecture (NSW) Pty Ltd  
 42 Davies Street  
 Surry Hills, NSW 2010  
 ABN: 81956706590  
 NSW: Nominated Architects  
 Koos de Keijzer 5767 | David Randerson 8542

T +61 2 8346 4500  
 info@DKO.com.au  
 www.DKO.com.au

© DKO Architecture (NSW) Pty Ltd  
 Except as allowed under copyright act, no part of this  
 drawing may be reproduced or otherwise dealt with  
 without written permission of DKO Architecture.

Rev.	Date	By	Ckd	Description
01	21/11/2019	WL	IL	DA SUBMISSION
02	26/11/2019	WL	IL	DA SUBMISSION
A	29/11/2019	WL	IL	DA SUBMISSION

Project Name  
 Project Address

28 Lockwood Av. Belrose  
 28 Lockwood Ave,  
 Belrose, NSW 2085

Project Number  
 Drawing Name  
 Scale  
 Date

11574  
 Perspectives - Sheet 2  
 @A3  
 Aug 2019

Client

Platinum Property Group

Drawing Number  
 Revision

**DA304**  
**A**