

DA ONLY
NOT FOR CONSTRUCTION

GENERAL LANDSCAPE NOTES

Site Preparation
All existing plants, trees and vegetation to be retained shall be preserved and protected from damage for the duration of the works. Root systems of existing plants and trees must not be disturbed. Any nearby work shall be carried out carefully using hand tools. Trees shall not be removed, pruned or lopped unless specific written approval by the relevant authority has been given. Remove all weeds and rubbish from the site prior to commencing landscape works.

Soil Preparation
For new roof gardens, supply and install 'Green Life Lightweight garden mix' to a depth of 300mm. Provide a 50mm layer of coarse river sand below to assist with drainage.

For existing garden beds, cultivate existing soil for new plants to a depth of 300mm. Supply and incorporate 'Green Life Soil Conditioner' (or equivalent) with existing soil. Do not cultivate soil beneath existing trees that are to be retained. Where earthworks have occurred, the builder is to ensure stockpiled topsoil is free from rocks, clay lumps, tree roots and rubbish.

Planting
Selected plants to be purchased from an approved nursery. Plants to be healthy, vigorous, of good form and consistent with the species/variety specified. Baikie Corr takes no responsibility for the vigour, condition or lifespan of any plants. Planting procedure as follows:

- Set out plants to positions as indicated on the accompanying landscape plan
- Dig hole for plant approximately twice the width and 100mm deeper than plant root ball.
- Loosen sides and base of hole.
- Fertilise and backfill base of hole with 100mm of surrounding topsoil and lightly consolidate.
- Water base of hole.
- Remove plant from container and place into hole.
- Root ball to be backfilled with surrounding topsoil and firmed into place.
- Form shallow dish around base of stem to contain water.
- Base of plant stem to be flush with finished soil level.
- Advanced trees and large shrubs to be secured with three 1800mm long x 38mm square hardwood stakes and hessian webbing.
- Plants to be watered and maintained in accordance with maintenance schedule.

Mulching
Supply and install Green Life premium hardwood mulch (or equivalent) to a depth of 75mm for all garden beds. Provide a catchment dish around base of plants. Mulch level to be set down 25mm from adjacent paving and/or garden edging.

Fertiliser
On completion of work, all areas to be fertilised with Organic Life Slow Release Fertiliser (or equivalent) and subsequently watered in.

Turf
Area to be graded sufficiently to allow a minimum of 100mm of sandy loam topsoil or turf underlay. Finished gradients to fall away from buildings and potential ponding areas. Provide subsurface drainage to areas prone to ponding.

Paving
All paving to be laid to manufacturer's detail and specification. Finished gradients to fall away from buildings and potential ponding areas.

GENERAL LANDSCAPE NOTES

Pool Enclosure
All new pool safety barriers and gate systems to be designed, located, installed and maintained in accordance with AS1926.1, AS1926.2, NCC and all other relevant codes. Existing pool safety barriers and gates to be inspected by the builder and repaired or replaced to ensure pool enclosure is safe and compliant.

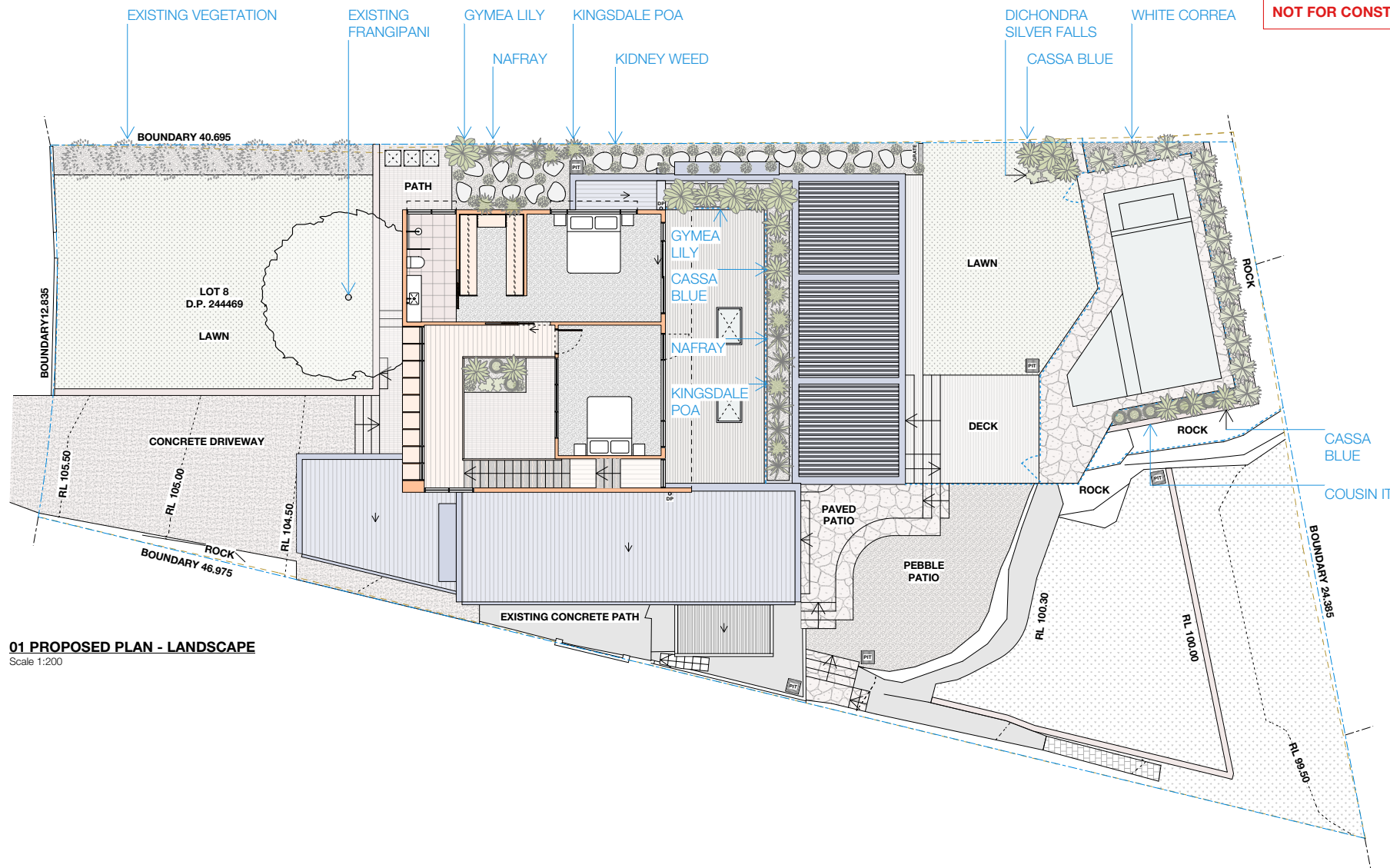
Garden Edging
Garden edging to be Form Boss 100mm COR-TEN steel edging (or equivalent). Install in accordance with manufacturer's detail and specification.

Irrigation
Builder to provide proprietary automatic drip irrigation system to roof garden. Builder to provide tap outlet within roof garden.

MAINTENANCE SCHEDULE

The following maintenance schedule is to be carried out from the date of practical completion by a suitably qualified person:

- Weekly Maintenance**
- Any freestanding pots to be hand watered.
 - Automatic irrigation system to operate.
- Fortnightly Maintenance**
- Remove all dead or broken parts of plants.
 - Mow lawn/s.
 - Weeding of lawn and garden beds.
 - Rubbish removal.
 - Check for infestation and plant disease. Treat as required.
 - Check irrigation system setting and performance. Faulty equipment to be repaired/replaced immediately.
 - Check and remove plant debris or soil sediment from surface drains in landscaped areas.
- Monthly Maintenance**
- Pruning and clipping of plants.
 - Spill over planting to be strategically pruned to maintain appearance of 'wild' and 'overgrown'.
 - Replace failed planting.
- Two/Three Month Maintenance**
- Fertilising of all planters to achieve healthy and vigorous growth. Organic slow-release fertiliser to be used.
 - Check and adjust stakes and webbing as required.
 - Prune hedges.
- Six Month Maintenance**
- Fertilising of all lawn/s to achieve healthy and vigorous growth. Organic slow-release fertiliser to be used.
 - Reinstate mulch to specified depth.
- Twelve Month Maintenance**
- Aerate lawn/s.



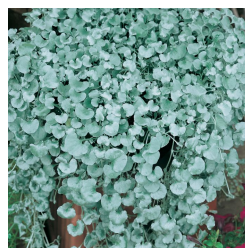
01 PROPOSED PLAN - LANDSCAPE
Scale 1:200



Common: Cousin It
Botanical: *casuarina glauca*
Spread: 1.0m
Height: 0.1m - 0.3m
Native: Yes
Pot Size: 200mm
Quantity: 8



Common: Kidney Weed
Botanical: *dichondra repens*
Spread: 0.9m - 1.2m
Height: 0.0m - 0.3m
Native: Yes
Pot Size: 140mm
Quantity: 35



Common: Dichondra Silver Falls
Botanical: *dichondra argentea*
Spread: 1.5m
Height: 0.0m - 0.1m
Native: Yes
Pot Size: 140mm
Quantity: 5



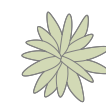
Common: Sir Walter
Botanical: *stenotaphrum secundatum*
Spread: N/A
Height: N/A
Native: Yes
Pot Size: N/A
Quantity: 130m²



Common: White Correa
Botanical: *correa alba*
Spread: 0.9m - 1.2m
Height: 0.9m - 1.5m
Native: Yes
Pot Size: 200mm
Quantity: 13



Common: Gymea Lily
Botanical: *doryanthes excelsa*
Spread: 1.0m - 2.0m
Height: 2.0 - 3.0m
Native: Yes
Pot Size: 400mm
Quantity: 5



Common: Cassa Blue
Botanical: *dianella caerulea*
Spread: 0.6m
Height: 0.6m
Native: Yes
Pot Size: 200mm
Quantity: 11



Common: Kingsdale Poa
Botanical: *poa poiformis*
Spread: 0.5m
Height: 0.5m
Native: Yes
Pot Size: 200mm
Quantity: 10



Common: Nafray
Botanical: *pennisetum alopecuroides*
Spread: 0.6m
Height: 0.6m
Native: Yes
Pot Size: 200mm
Quantity: 10