

THIS PLAN IS TO BE READ IN  
CONJUNCTION WITH  
THE CONDITIONS OF DEVELOPMENT  
CONSENT

DA2019/0562

LEGEND

AC	AIR CONDITIONING UNITS
ACL	AUTOMATIC CLOSING
AP	ACCESS PANEL
AH	OPERABLE HATCH WITH LADDER
BAL	BALUSTRADE
BG	BOX GUTTER
CB	CONCRETE BLOCKWORK
CBF	CONCRETE BROOM FINISH
CFC	COMPRESSED FIBRE CEMENT SHEETING
CL	CENTRE LINE
COM	COMMUNICATION CUPBOARD
COS	CHECK ON SITE
CR	CEMENT RENDER PAINT FINISH
CP	CONCRETE, POLISHED FINISH
CPT	CARPET WITH UNDERLAY AS SELECTED
CST	CONCRETE STEEL TROWELLED FINISH
DD	DOOR MAT
DM	DOWNPIPE
EQ	EQUAL
EV	EXHAUST VENT
FRW	-60% FIRE WINDOW
FB	FACE BRICK
FC	FIBRE CEMENT
FG	FIXED GLAZING
FH	FIRE HYDRANT
FHR	FIRE HOSE REEL
FIP	FIRE INDICATOR PANEL
FW	FLOOR WASTE
GD	GRATED DRAIN
GPO	GENERAL POWER OUTLET
HBV	FIRE HYDRANT BOOSTER VALVE
HC	HOSE COCK
HR	HANDRAIL
HWU	HOT WATER UNIT (RINNAI)
KRB	KERB
AL	ALUMINIUM LOUVRE SCREEN
MB	MAIL BOXES
MDR	METAL DECK ROOF
UP	LIGHT WEIGHT ARCHITECTURAL MATRIX PANEL
CF	OVERFLOW
CFC	OFF FORM CONCRETE (SMOOTH)
CSD	ON SITE DETENTION TANK TO ENG'S DETAIL
PA	PAVING AS SELECTED
PB	PLASTERBOARD
PE	PEBBLES
PF	PAINT FINISHES SPECIFIED
PL	PLASTERBOX
R	BUILT-IN ROBE
RB	REMOVABLE BOLLARD
RWH	RAINWATER HEAD
RWO	RAINWATER OUTLET
RWT	RAINWATER TANK
SK	SKYDOME VENTILATED SKY LIGHT
SPB	SET PLASTERBOARD CEILING
SS	STAINLESS STEEL
STC	STONE CLADDING
TB	TIMBER BOARD
TD	TIMBER DECK
TF	TIMBER FLOORBOARDS AS SELECTED
TGI	TACTILE GROUND INDICATORS IN ACCORDANCE WITH AS 1428.4.1
TL	FLOOR TILES AS SELECTED
VP	VENT PIPE
VS	VENT STACK
WBM	WATERPROOF MEMBRANE AS SPECIFIED
X	
RL 5.00	EXISTING RLs / LEVELS
RL 5.13	PROPOSED FINISHED FLOOR LEVELS
RL 5.13	PROPOSED STRUCTURAL SLAB LEVELS

C	15.10.18	DEVELOPMENT APPLICATION FOOD PREP + STORE LAYOUT
B	24.09.18	DEVELOPMENT APPLICATION FOOD PREP + STORE LAYOUT
A	05.04.18	DEVELOPMENT APPLICATION

ISSUE	DATE	COMMENT
-------	------	---------

Contractor to verify all dimensions on site before commencing work. Figured dimensions given are to be taken in preference to scaling. Copyright of design shown herein is retained by this office. Authority is required for any reproduction.

**BLACKMORE DESIGN GROUP**  
ARCHITECTS & PROJECT MANAGERS  
1/1, ST PITWATER ROAD, MANLY NSW 2203 AUSTRALIA  
PHONE: 02 9377 8550 FAX: 02 9377 2094  
EMAIL: INFO@BLACKMOREDESIGN.COM.AU  
WWW: WWW.BLACKMOREDESIGN.COM.AU

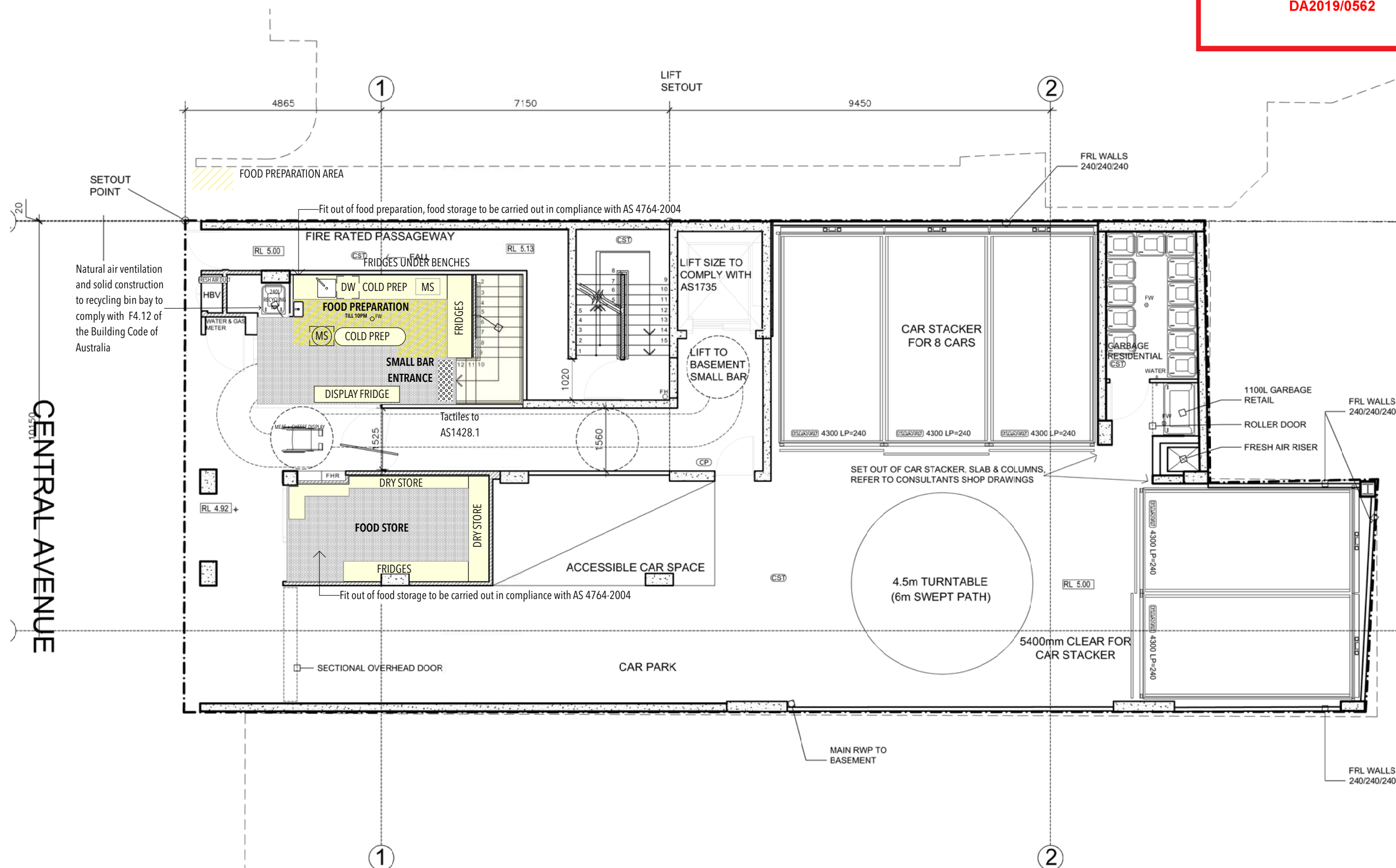
**CLIENT**  
Norfolk Property Group Pty Ltd

**PROJECT**  
Proposed small bar  
17-19 Central Avenue, Manly

**DRAWING**  
GROUND FLOOR

SCALE	1:100 @ A3	JOB	17_CAM_11
DATE	15 October 2018	DWG NO	
DRAWN BY	KS	DA.02	
CHKD BY	RB		C

REV B DRAWN BY SUSAN GOLDSACK ARCHITECT



GROUND FLOOR

Refers to accompanying design statement for the food premise, specify design compliance with AS 4764-2004

REV B DRAWN BY SUSAN GOLDSACK ARCHITECT