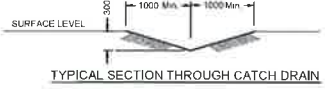


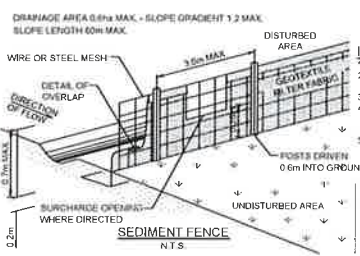
**NOTES**

- ALL LEVELS ARE IN METRES ABOVE AUSTRALIAN HEIGHT DATUM U.N.O.
- EARTHWORKS CUT/FILL QUANTITIES TABULATED COMPRISE REGRADING IN THE SHADED AREAS ONLY. COLOURED ISOPACHYIC CONTOURS REPRESENTS EXCAVATION AND FILLING DEPTHS FROM EXISTING GROUND LEVELS TO PROPOSED FORMATION LEVEL.
- FORMATION LEVEL IS DEFINED AS FOLLOWS:
  - IN EXTERNAL AREAS UNDERSIDE OF PAVEMENT SUB-BASE / CAPPING
  - BENEATH BUILDING SLAB UNDERSIDE OF SLAB
  - IN LANDSCAPED AREAS TAKEN AS FINISHED LEVELS
- BULK EARTHWORKS LEVELS BELOW BUILDINGS ARE INDICATED BUT MUST BE CHECKED AGAINST ARCHITECTURAL LEVELS AND STRUCTURAL DETAILS IN THE EVENT OF DISCREPANCIES. REFER TO ARCHITECT FOR CLARIFICATION. LEVELS ARE SUBJECT TO MINOR CHANGES.
- NO ALLOWANCE HAS BEEN MADE FOR THE EXCAVATION OF FOUNDATIONS, SERVICES TRENCHES OR TANKS.
- EXCAVATION AND FILLING ADJACENT TO RETAINED TREES TO BE IN ACCORDANCE WITH TREE PROTECTION STRATEGY AND ARBORCULTURIST RECOMMENDATIONS.
- ALL LOCATIONS SHOWN IN THIS DRAWING ARE APPROXIMATE BASED ON THE ORIGINAL SURVEY INFORMATION RECEIVED AND ACTUAL LOCATIONS MUST BE ESTABLISHED ON SITE OR BY FURTHER DETAILED SURVEYING.
- NO ALLOWANCE HAS BEEN MADE FOR EARTHWORKS BULKING.

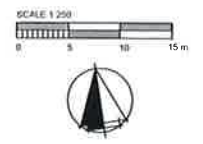
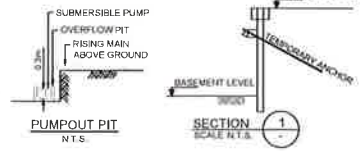
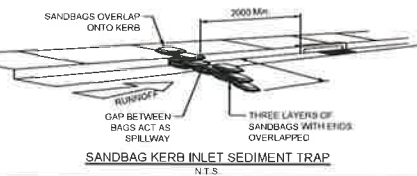
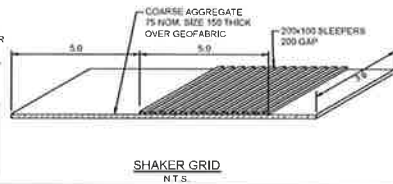
CONTINUES ON CV-0001



NOTE: REFER TO PROPOSED CONTOURS FOR EXACT PROFILE OF CATCH DRAINS REQUIRED IN FINAL STATE.



- INSTALLATION**
- EXCAVATE A TRENCH 200mm DEEP.
  - DRIVE POSTS 300-700mm INTO GROUND AT A MAXIMUM SPACING OF 3.0m CENTRES.
  - PLACE AND FIX SUPPORT MESH (F52) TO POST.
  - LAY BULK GEOTEXTILE (SF 2000) AGAINST THE SUPPORT MESH AND FIX BY TIE WIRE, STAPLES OR HOG RINGS.
  - PLACE BDM IN TRENCH AND BACKFILL WITH SOL.
- NOTE:** POSITION OF SEDIMENT FENCE AS DIRECTED BY SUPERINTENDENT. FENCE TO REMAIN IN PLACE UNTIL EXCAVATION IS BELOW FOOTPATH LEVEL. PROVIDE 3m<sup>2</sup> TURFED AREA ON DOWNSTREAM SIDE OF FENCE AT SURCHARGE OPENINGS.



**EROSION AND SEDIMENT LEGEND**

- PROPOSED SEDIMENT FENCE
- PROPOSED SHAKER GRID AND WASH DOWN FACILITY
- PROVIDE TEMPORARY SANDBAGS AROUND PITS
  - AFTER PAVEMENT WORKS ARE COMPLETE IF WORKS ARE ONGOING UPSTREAM TO EXISTING GRATED PITS
  - DOWNSTREAM OF CONSTRUCTION WORKS
- FLOW DIRECTION
- BASEMENT EXTENT
- TEMPORARY CATCH DRAIN
- 7500M CFA PILE TO ROCK

NOTE: REFER TO ARCHITECTURAL PLANS FOR DETAILED FINISHED LEVELS.

| REV | DATE     | DESCRIPTION         | DN | CHK |
|-----|----------|---------------------|----|-----|
| D1  | 15/08/21 | ISSUED FOR APPROVAL | AN | AN  |
| O4  | 01/10/21 | ISSUED FOR APPROVAL | DC | DC  |
| O3  | 17/08/21 | ISSUED FOR APPROVAL | DC | DC  |
| O2  | 02/07/21 | ISSUED FOR APPROVAL | CF | DC  |
| O1  | 25/05/21 | ISSUED FOR APPROVAL | BH | BH  |

enstruct group pty ltd  
 Level 4, 2 Glen Street  
 Milsom Park NSW 2061  
 Australia  
 Telephone (02) 8504 1444  
 Facsimile (02) 8504 1555  
 www.enstruct.com.au



DEE WHY TOWN CENTRE

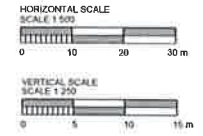
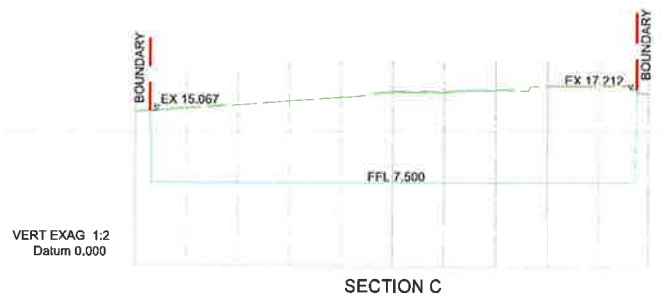
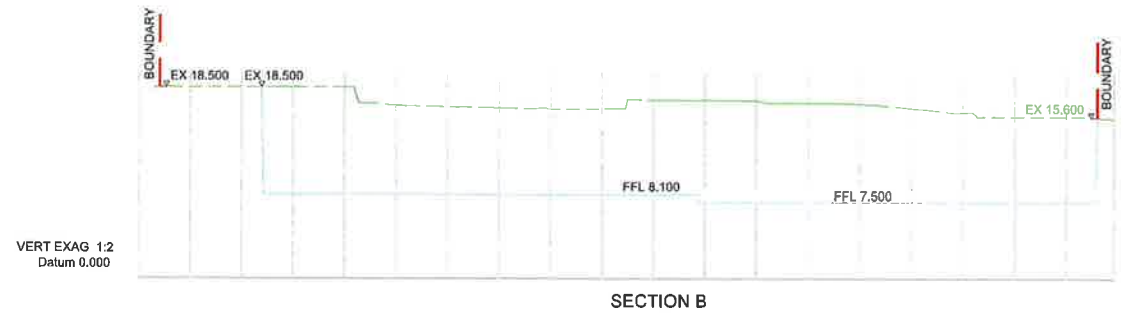
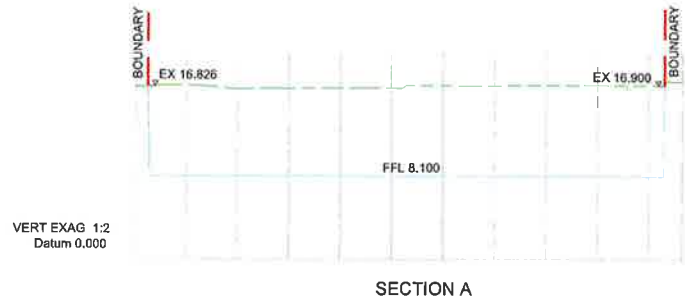
EARLY WORKS  
 BULK EARTHWORKS  
 SHORING, SEDIMENT &  
 EROSION CONTROL PLAN

FOR APPROVAL

| NO       | DATE | BY        | CHKD      | REV |
|----------|------|-----------|-----------|-----|
| AS NOTED |      | J. HARRIS | J. HARRIS |     |

DATE: 15 JUN 21  
 DRAWING NO: 4963  
 SHEET NO: CV-0002  
 OF: 05

NOT FOR CONSTRUCTION



| rev | date     | description         | dn | crk |
|-----|----------|---------------------|----|-----|
| 04  | 16/08/16 | ISSUED FOR APPROVAL | AN | AN  |
| 03  | 01/10/15 | ISSUED FOR APPROVAL | DC | DC  |
| 02  | 17/09/15 | ISSUED FOR APPROVAL | DC | DC  |
| 01  | 25/05/15 | ISSUED FOR APPROVAL | IH | IH  |

enstruct group pty ltd  
Level 4, 2 Glen Street  
Milton Park NSW 2011  
Australia  
Telephone (02) 8904 1444  
Facsimile (02) 8904 1555  
www.enstruct.com.au



DEE WHY TOWN CENTRE

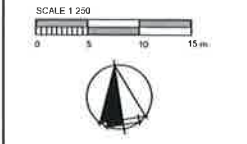
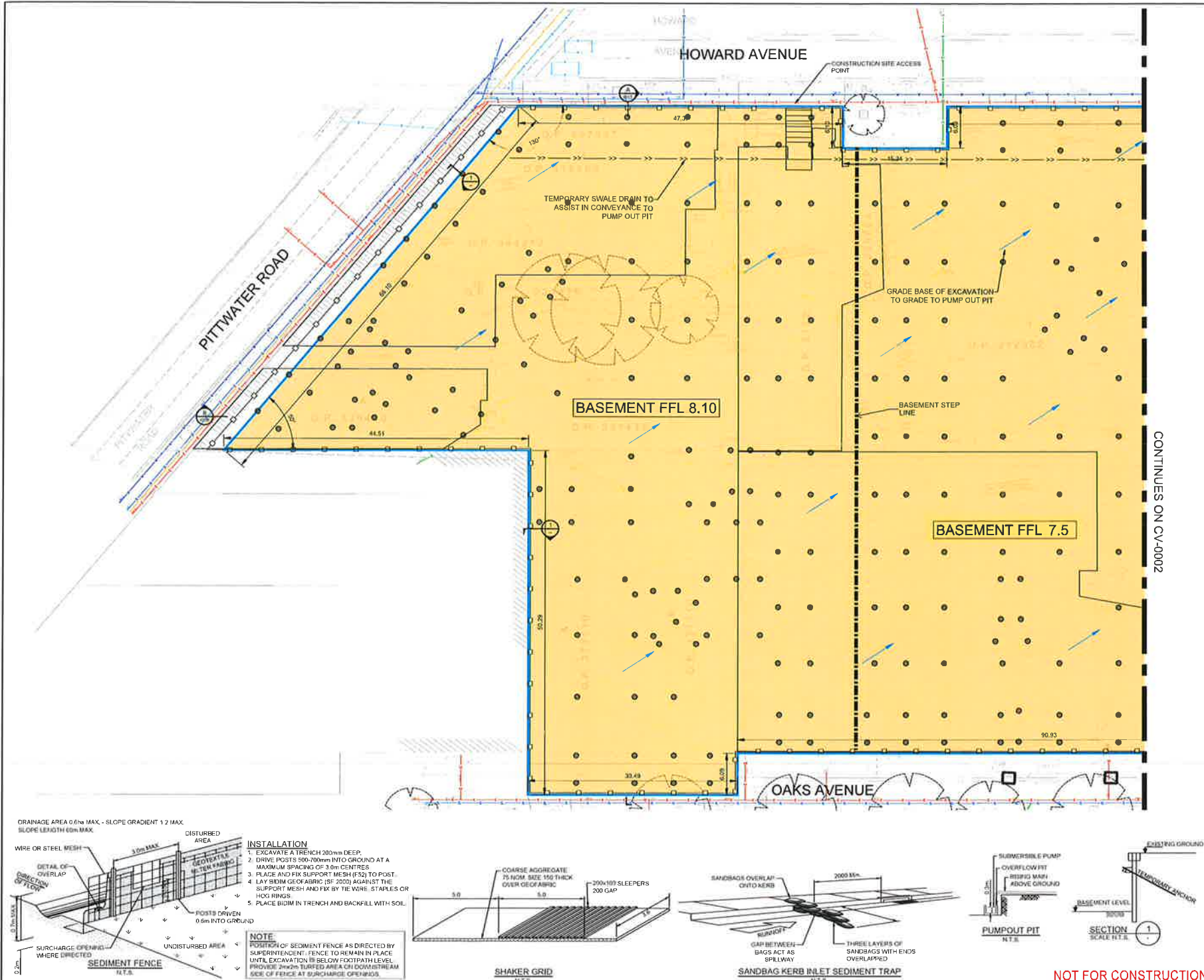
EARLY WORK  
BULK EARTHWORKS  
SECTION

FOR APPROVAL

|             |          |          |          |            |          |      |        |
|-------------|----------|----------|----------|------------|----------|------|--------|
| scale of A1 | AS NOTED | drawn by | I HARRIS | checked by | I HARRIS | date | JUN-15 |
|-------------|----------|----------|----------|------------|----------|------|--------|

|             |      |           |         |    |    |
|-------------|------|-----------|---------|----|----|
| project no. | 4963 | sheet no. | CV-0005 | of | 04 |
|-------------|------|-----------|---------|----|----|

NOT FOR CONSTRUCTION



**EROSION AND SEDIMENT LEGEND**

- PROPOSED SEDIMENT FENCE
- PROPOSED SHAKER GRID AND WASH DOWN FACILITY
- PROVIDE TEMPORARY SANDBAGS AROUND PITS  
 1. AFTER PAVEMENT WORKS ARE COMPLETE IF WORKS ARE ONGOING UPSTREAM TO EXISTING GRATED PITS  
 2. DOWNSTREAM OF CONSTRUCTION WORKS
- FLOW DIRECTION
- BASEMENT EXTENT
- TEMPORARY CATCH DRAIN
- FLOOR OF AS FLE TO ROCK

**NOTE:**  
REFER TO ARCHITECTURAL PLANS FOR DETAILED FINISHED LEVELS.

CONTINUES ON CV-0002

|     |          |                     |    |     |
|-----|----------|---------------------|----|-----|
| 07  | 15/06/15 | ISSUED FOR APPROVAL | AN | AN  |
| 06  | 01/10/15 | ISSUED FOR APPROVAL | DC | DC  |
| 05  | 17/09/15 | ISSUED FOR APPROVAL | DC | DC  |
| 04  | 22/07/15 | ISSUED FOR APPROVAL | CF | DC  |
| 03  | 11/07/15 | ISSUED FOR APPROVAL | BH | BH  |
| 02  | 30/06/15 | ISSUED FOR APPROVAL | BH | BH  |
| 01  | 25/06/15 | ISSUED FOR APPROVAL | BH | BH  |
| REV | DATE     | DESCRIPTION         | BY | CHK |

enstruct group Pty Ltd  
 Level 4, 2 Glen Street  
 Meters Point NSW 2081  
 Australia  
 Telephone (02) 8904 1444  
 Facsimile (02) 8904 1555  
 www.enstruct.com.au



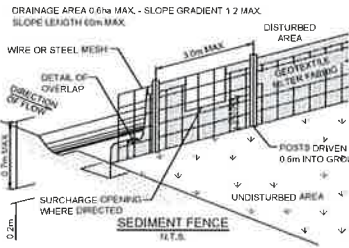
DEE WHY TOWN CENTRE

EARLY WORKS  
 BULK EARTHWORKS  
 SHORING, SEDIMENT &  
 EROSION CONTROL PLAN

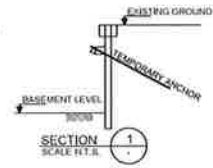
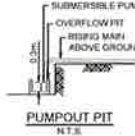
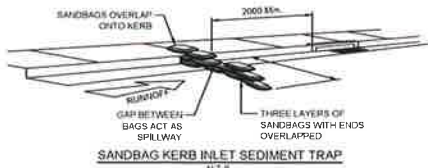
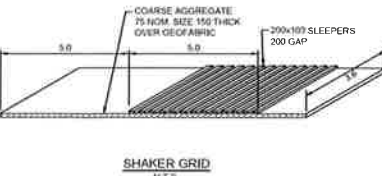
FOR APPROVAL

|          |          |          |        |
|----------|----------|----------|--------|
| DATE     | BY       | CHKD     | DATE   |
| AS NOTED | I HARRIS | I HARRIS | JUN-15 |

|            |         |     |
|------------|---------|-----|
| PROJECT NO | DWG NO  | REV |
| 4963       | CV-0001 | 07  |



- INSTALLATION**
- EXCAVATE A TRENCH 200mm DEEP.
  - DRIVE POSTS 500-700mm INTO GROUND AT A MAXIMUM SPACING OF 3.0m CENTRES.
  - PLACE AND FIX SUPPORT MESH (F52) TO POST.
  - LAY BIOM GEOTEXTILE (SF 2000) AGAINST THE SUPPORT MESH AND FIX BY TIE WIRE, STAPLES OR HOUS RINGS.
  - PLACE BIOM IN TRENCH AND BACKFILL WITH SOIL.
- NOTE:**  
POSITION OF SEDIMENT FENCE AS DIRECTED BY SUPERINTENDENT. FENCE TO REMAIN IN PLACE UNTIL EXCAVATION IS BELOW FOOTPATH LEVEL. PROVIDE 2m<sup>2</sup> TURFED AREA ON DOWNSTREAM SIDE OF FENCE AT SURCHARGE OPENINGS.



NOT FOR CONSTRUCTION