

--	--	--	--	--	--	--	--	--	--	--	--	--	--	--	--	--	--	--	--	--	--	--	--	--	--	--	--	--	--	--	--	--	--	--	--	--	--	--	--	--	--	--	--	--	--	--	--	--	--	--	--	--	--	--	--	--	--	--	--	--	--	--	--	--	--	--	--	--	--	--	--	--	--	--	--	--	--	--	--	--	--	--	--	--	--	--	--	--	--	--	--	--	--	--	--	--	--	--	--	--	--	--	--	--	--	--	--	--	--	--	--	--	--	--	--	--	--	--	--	--	--	--	--	--	--	--	--	--	--	--	--	--	--	--	--	--	--	--	--	--	--	--	--	--	--	--	--	--	--	--	--	--	--	--	--	--	--	--	--	--	--	--	--	--	--	--	--	--	--	--	--	--	--	--	--	--	--	--	--	--	--	--	--	--	--	--	--	--	--	--	--	--	--	--	--	--	--	--	--	--	--	--	--	--	--	--	--	--	--	--	--	--	--	--	--	--	--	--	--	--	--	--	--	--	--	--	--	--	--	--	--	--	--	--	--	--	--	--	--	--	--	--	--	--	--	--	--	--	--	--	--	--	--	--	--	--	--	--	--	--	--	--	--	--	--	--	--	--	--	--	--	--	--	--	--	--	--	--	--	--	--	--	--	--	--	--	--	--	--	--	--	--	--	--	--	--	--	--	--	--	--	--	--	--	--	--	--	--	--	--	--	--	--	--	--	--	--	--	--	--	--	--	--	--	--	--	--	--	--	--	--	--	--	--	--	--	--	--	--	--	--	--	--	--	--	--	--	--	--	--	--	--	--	--	--	--	--	--	--	--	--	--	--	--	--	--	--	--	--	--	--	--	--	--	--	--	--	--	--	--	--	--	--	--	--	--	--	--	--	--	--	--	--	--	--	--	--	--	--	--	--	--	--	--	--	--	--	--	--	--	--	--	--	--	--	--	--	--	--	--	--	--	--	--	--	--	--	--	--	--	--	--	--	--	--	--	--	--	--	--	--	--	--	--	--	--	--	--	--	--	--	--	--	--	--	--	--	--	--	--	--	--	--	--	--	--	--	--	--	--	--	--	--	--	--	--	--	--	--	--	--	--	--	--	--	--	--	--	--	--	--	--	--	--	--	--	--	--	--	--	--	--	--	--	--	--	--	--	--	--	--	--	--	--	--	--	--	--	--	--	--	--	--	--	--	--	--	--	--	--	--	--	--	--	--	--	--	--	--	--	--	--	--	--	--	--	--	--	--	--	--	--	--	--	--	--	--	--	--	--	--	--	--	--	--	--	--	--	--	--	--	--	--	--	--	--	--	--	--	--	--	--	--	--	--	--	--	--	--	--	--	--	--	--	--	--	--	--	--	--	--	--	--	--	--	--	--	--	--	--	--	--	--	--	--	--	--	--	--	--	--	--	--	--	--	--	--	--	--	--	--	--	--	--	--	--	--	--	--	--	--	--	--	--	--	--	--	--	--	--	--	--	--	--	--	--	--	--	--	--	--	--	--	--	--	--	--	--	--	--	--	--	--	--	--	--	--	--	--	--	--	--	--	--	--	--	--	--	--	--	--	--	--	--	--	--	--	--	--	--	--	--	--	--	--	--	--	--	--	--	--	--	--	--	--	--	--	--	--	--	--	--	--	--	--	--	--	--	--	--	--	--	--	--	--	--	--	--	--	--	--	--	--	--	--	--	--	--	--	--	--	--	--	--	--	--	--	--	--	--	--	--	--	--	--	--	--	--	--	--	--	--	--	--	--	--	--	--	--	--	--	--	--	--	--	--	--	--	--	--	--	--	--	--	--	--	--	--	--	--	--	--	--	--	--	--	--	--	--	--	--	--	--	--	--	--	--	--	--	--	--	--	--	--	--	--	--	--	--	--	--	--	--	--	--	--	--	--	--	--	--	--	--	--	--	--	--	--	--	--	--	--	--	--	--	--	--	--	--	--	--	--	--	--	--	--	--	--	--	--	--	--	--	--	--	--	--	--	--	--	--	--	--	--	--	--	--	--	--	--	--	--	--	--	--	--	--	--	--	--	--	--	--	--	--	--	--	--	--	--	--	--	--	--	--	--	--	--	--	--	--	--	--	--	--	--	--	--	--	--	--	--	--	--	--	--	--	--	--	--	--	--	--	--	--	--	--	--	--	--	--	--	--	--	--	--	--	--	--	--	--	--	--	--	--	--	--	--	--	--	--	--	--	--	--	--	--	--	--	--	--	--	--	--	--	--	--	--	--	--	--	--	--	--	--	--	--	--	--	--	--	--	--	--	--	--	--	--	--	--	--	--	--	--	--	--	--	--	--	--	--	--	--	--	--	--	--	--	--	--	--	--	--	--	--	--	--	--	--	--	--	--	--	--	--	--	--	--	--	--	--	--	--	--	--	--	--	--	--	--	--	--	--	--	--	--	--	--	--	--	--	--	--	--	--	--	--	--	--	--	--	--	--	--	--	--	--	--	--	--	--	--	--	--	--	--	--	--	--	--	--	--	--	--	--	--	--	--	--	--	--	--	--	--	--	--	--	--	--	--	--	--	--	--	--	--	--	--	--	--	--	--	--	--	--	--	--	--	--	--	--	--	--	--	--	--	--	--	--	--	--	--	--	--	--	--	--	--	--	--	--	--	--	--	--	--	--	--	--	--	--	--	--	--	--	--	--	--	--	--	--	--	--	--	--	--	--	--	--	--	--	--	--	--	--	--	--	--	--	--	--	--	--	--	--	--	--	--	--	--	--	--	--	--	--	--	--	--	--	--	--	--	--	--	--	--	--	--	--	--	--	--	--	--	--	--	--	--	--	--	--	--	--	--	--	--	--	--	--	--	--	--	--	--	--	--	--	--	--	--	--	--	--	--	--	--	--	--	--	--	--	--	--	--	--	--	--	--	--	--	--	--	--	--	--	--	--	--	--	--	--	--	--	--	--	--	--	--	--	--	--	--	--	--	--	--	--	--	--	--	--	--	--	--	--	--	--	--	--	--	--	--	--	--	--	--	--	--	--	--	--	--	--	--	--	--	--	--	--	--	--	--	--	--	--	--	--	--	--	--	--	--	--	--	--	--	--	--	--	--	--	--	--	--	--	--	--	--	--	--	--	--	--	--	--	--	--	--	--	--	--	--	--	--	--	--	--	--	--	--	--	--	--	--	--	--	--	--	--	--	--	--	--	--	--	--	--	--	--	--	--	--	--	--	--	--	--	--	--	--	--	--	--	--	--	--	--	--	--	--	--	--	--	--	--	--	--	--	--	--	--	--	--	--	--	--	--	--	--	--	--	--	--	--	--	--	--	--	--	--	--	--	--	--	--	--	--	--	--	--	--	--	--	--	--	--	--	--	--	--	--	--	--	--	--	--	--	--	--	--	--	--	--	--	--	--	--	--	--	--	--	--	--	--	--	--	--	--	--	--	--	--	--	--	--	--	--	--	--	--	--	--	--	--	--	--	--	--	--	--	--	--	--	--	--	--	--	--	--	--	--	--	--	--	--	--	--	--	--	--	--	--	--	--	--	--	--	--	--	--	--	--	--	--	--	--	--	--	--	--	--	--	--	--	--	--	--	--	--	--	--	--	--	--	--	--	--	--	--	--	--	--	--	--	--	--	--	--	--	--	--	--	--	--	--	--	--	--	--	--	--	--	--	--	--	--	--	--	--	--	--	--	--	--	--	--	--	--	--	--	--	--	--	--	--	--	--	--	--	--	--	--	--	--	--	--	--	--	--	--	--	--	--	--	--	--	--	--	--	--	--	--	--	--	--	--	--	--	--	--	--	--	--	--	--	--	--

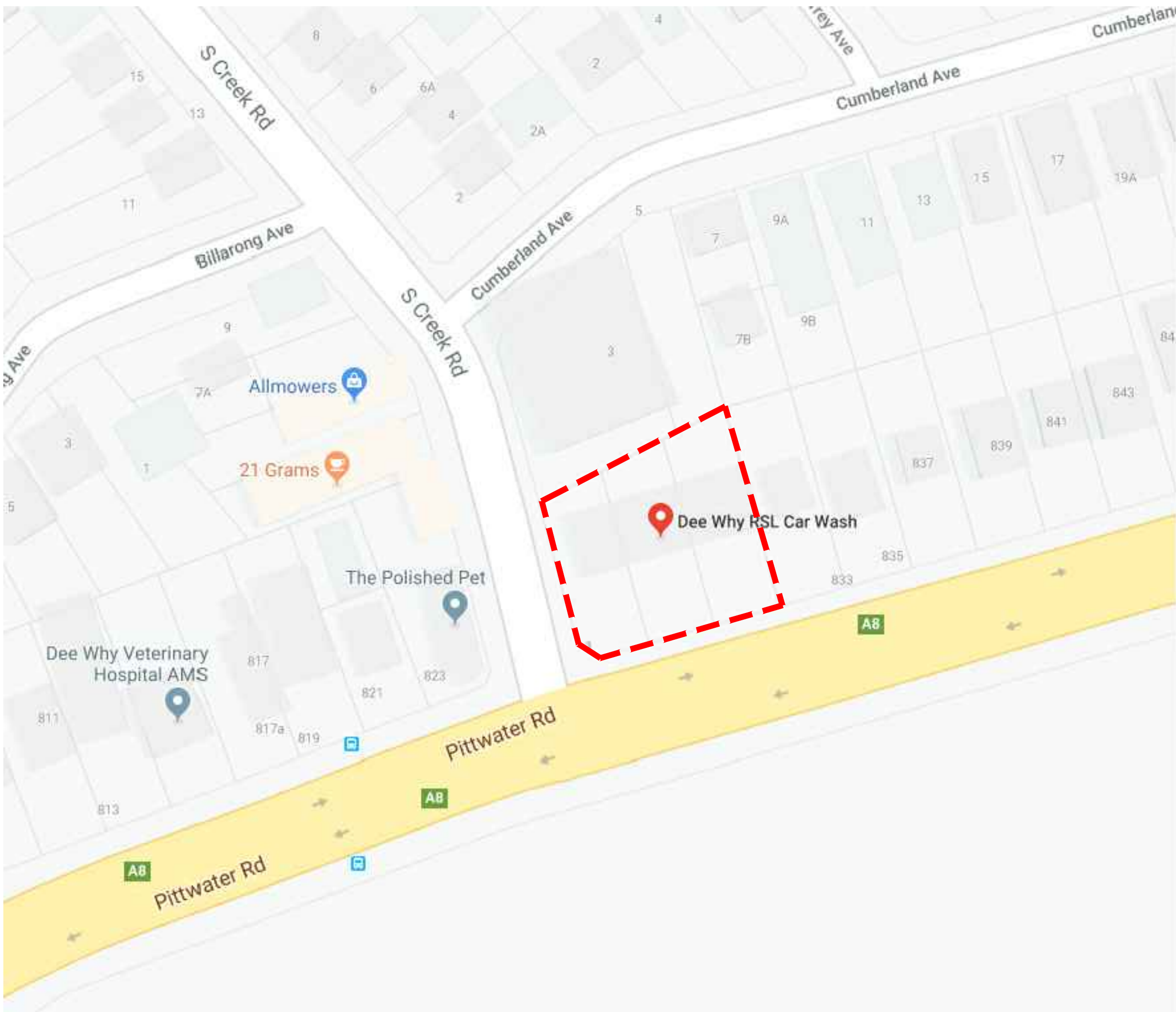
Dee Why RSL Carwash

Landscape Development Application

825-831 Pittwater Road

Drawing Schedule

Drawing Number	Drawing Title	Scale
000	Coversheet	N/A
C101	Colour Landscape Plan	1:100
101	Landscape plan & Planting schedule	1:100
501	Landscape specification notes & Landscape details	-



NOT FOR CONSTRUCTION

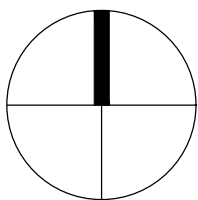
© 2020 Site Image (NSW) Pty Ltd ABN 44 801 262 380 as agent for Site Image NSW Partnership. All rights reserved. This drawing is copyright and shall not be reproduced or copied in any form or by any means (graphic, electronic or mechanical including photocopy) without the written permission of Site Image (NSW) Pty Ltd. Any license, expressed or implied, to use this document for any purpose what so ever is restricted to the terms of the written agreement between Site Image (NSW) Pty Ltd and the instructing party.

The contractor shall check and verify all work on site (including work by others) before commencing the landscape installation. Any discrepancies are to be reported to the Project Manager or Landscape Architect prior to commencing work. Do not scale this drawing. Any required dimensions not shown shall be referred to the Landscape Architect for confirmation.

Issue	Revision Description	Drawn	Check	Date
E	For Approval	NH	RS	17.08.2020
D	For Approval	NH	RS	25.02.2020
C	For Approval	NH	RS	28.01.2020
B	For Approval	NH	RS	03.07.2019
A	For Approval	NH	RS	13.06.2019

LEGEND

Key Plan:



S I T E I M A G E

Landscape Architects
Level 1, 3-5 Baptist Street
Redfern NSW 2016
Australia
Tel: (61 2) 8332 5600
Fax: (61 2) 9698 2877
www.siteimage.com.au

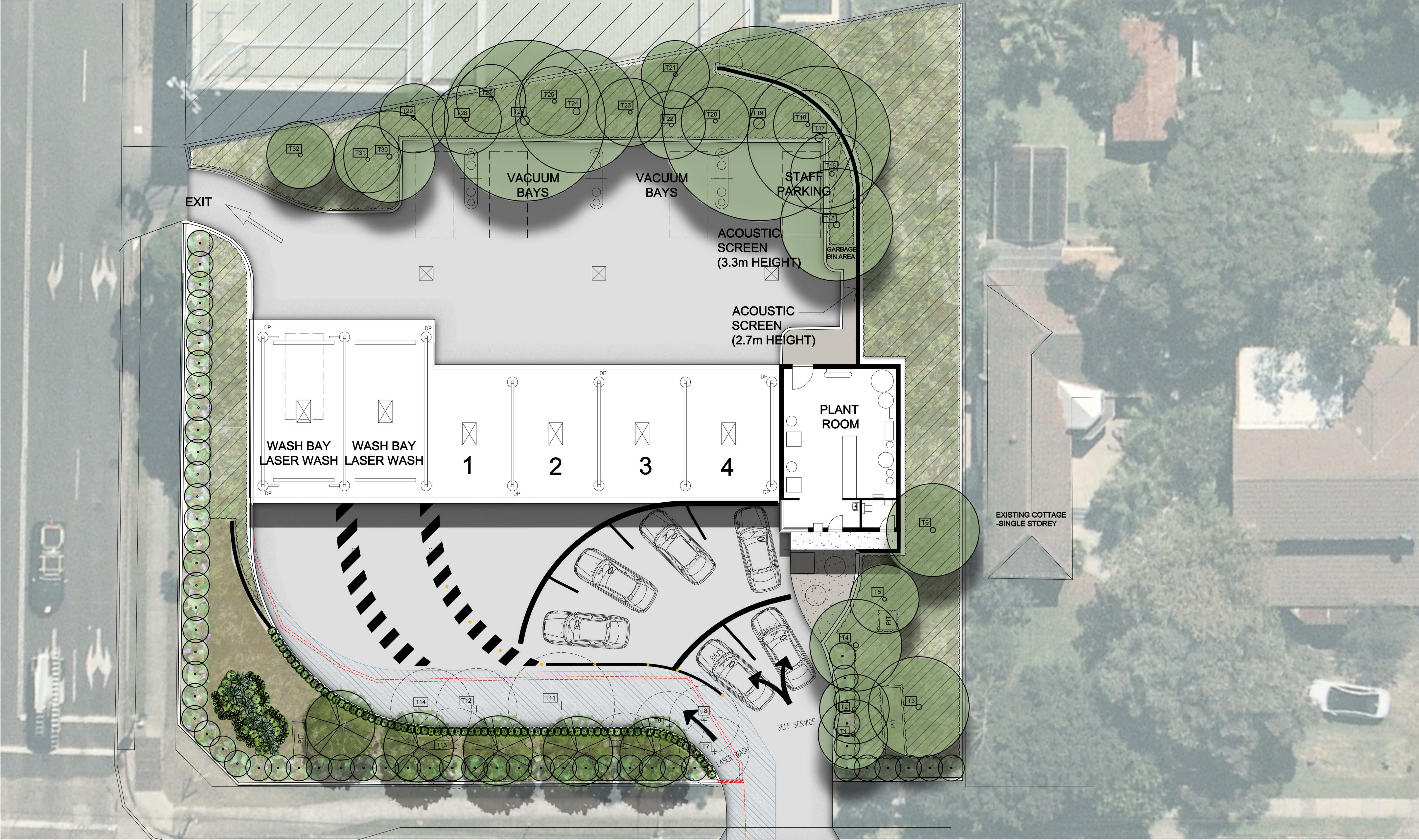
Client:
Dee Why RSL

Project:
Dee Why RSL Carwash

Drawing Name:
Cover Sheet

FOR APPROVAL

Scale:
Job Number: SS19-4127
Drawing Number:
Issue: 000 E



NOT FOR CONSTRUCTION

© 2020 Site Image (NSW) Pty Ltd. ABN 44 801 262 380 as agent for Site Image NSW Partnership. All rights reserved. This drawing is copyright and shall not be reproduced or copied in any form or by any means (graphic, electronic or mechanical including photocopy) without the written permission of Site Image (NSW) Pty Ltd. Any license, expressed or implied, to use this document for any purpose what so ever is restricted to the terms of the written agreement between Site Image (NSW) Pty Ltd and the instructing party.

The contractor shall check and verify all work on site (including work by others) before commencing the landscape installation. Any discrepancies are to be reported to the Project Manager or Landscape Architect prior to commencing work. Do not scale this drawing. Any required dimensions not shown shall be referred to the Landscape Architect for confirmation.

E	For Approval
D	For Approval
C	For Approval
B	For Approval
A	For Approval
Issue	Revision Description

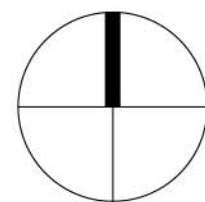
NH	RS	17.08.2020
NH	RS	25.02.2020
NH	RS	28.01.2020
NH	RS	03.07.2019
NH	RS	13.06.2019
Drawn	Check	Date

LEGEND

- Trees to be retained
- Trees to be removed
- Proposed Trees

- Proposed shrubs/accents
- Existing vegetation
- Existing driveway kerb
- Mulch

Key Plan:



SITE IMAGE
Landscape Architects
Level 1, 3/5 Bagin Street
Redfern NSW 2016
Australia
Tel: (61 2) 8332 5600
Fax: (61 2) 9698 2877
www.siteimage.com.au

Client:
Dee Why RSL

Project:
Dee Why RSL Carwash

Drawing Name:
Colour Landscape Plan

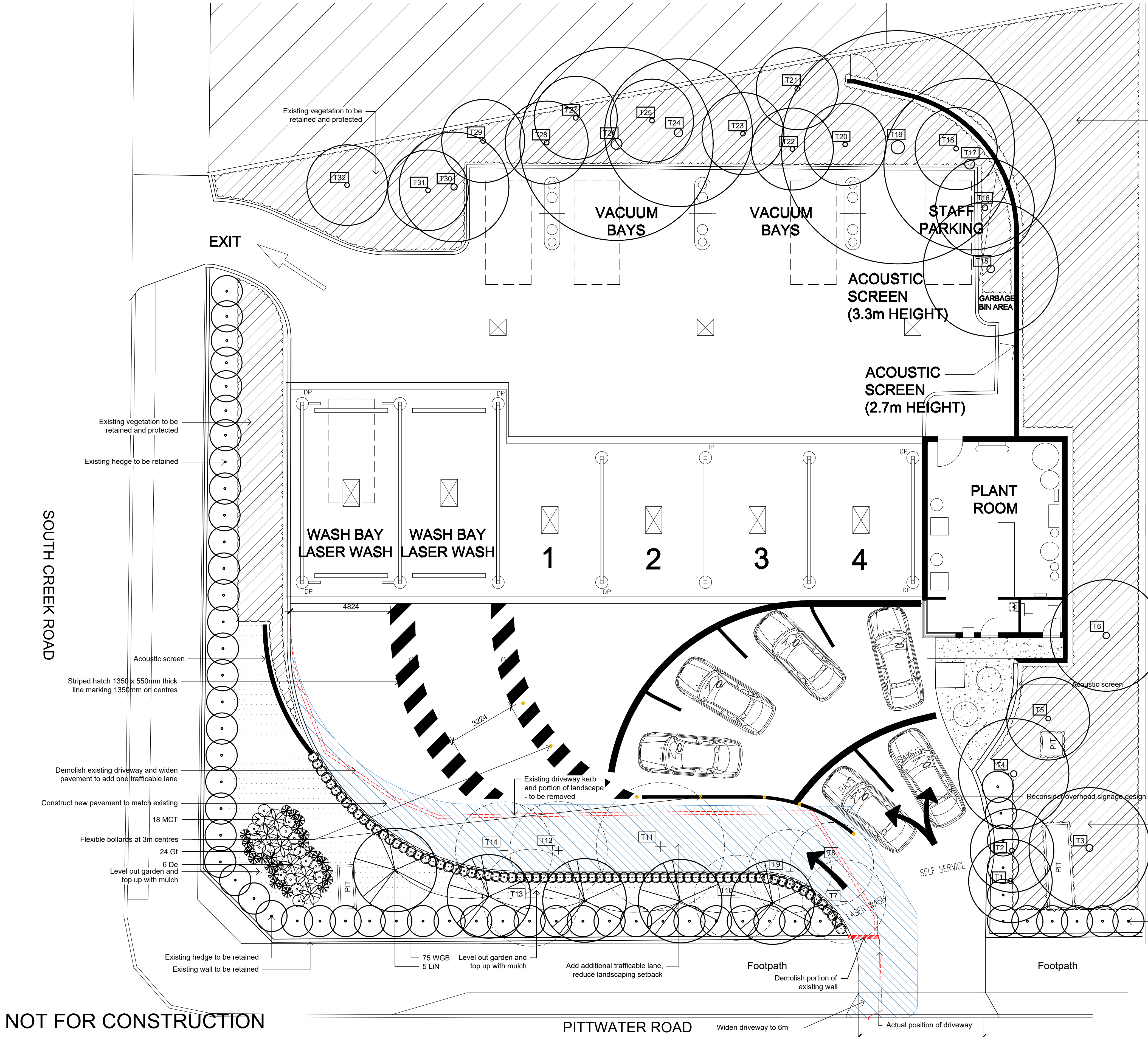
FOR APPROVAL

Scale:
Job Number:
SS19-4127

Drawing Number:

Sheet_of_

C101 E



SS19-4127 PLANT SCHEDULE						
Dee Why RSL Carwash						
Symbol	Botanic Name	Common Name	Spacing	Pot Size	H x W (m)	Quantity
TREES						
LiN	Lagerstroemia indica 'Natchez'	Crepe Myrtle	As Shown	75L	8 x 4	5
SHRUBS AND ACCENTS						
De	Doryanthes excelsa	Gynea Lily	As Shown	300mm	2.5 x 2	6
MCT	Melaleuca 'Claret Tops'	Claret tops	As Shown	200mm	0.8 x 0.6	18
WGB	Westringia 'Grey Box'	Coastal Rosemary	As Shown	200mm	0.4 x 0.4	75
GROUNDCOVERS AND GRASSES						
Gt	Gazania tomentosa	Gazania	As Shown	150mm	0.6 x 0.6	24

NOT FOR CONSTRUCTION

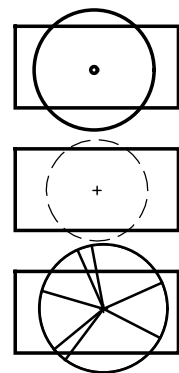
© 2020 Site Image (NSW) Pty Ltd ABN 44 801 262 380 as agent for Site Image NSW Partnership. All rights reserved. This drawing is copyright and shall not be reproduced or copied in any form or by any means (graphic, electronic or mechanical (including photocopy) without the written permission of Site Image (NSW) Pty Ltd. Any license, expressed or implied, to use this document for any purpose what so ever is restricted to the terms of the written agreement between Site Image (NSW) Pty Ltd and the instructing party.

The contractor shall check and verify all work on site (including work by others) before commencing the landscape installation. Any discrepancies are to be reported to the Project Manager or Landscape Architect prior to commencing work. Do not scale this drawing. Any required dimensions not shown shall be referred to the Landscape Architect for confirmation.

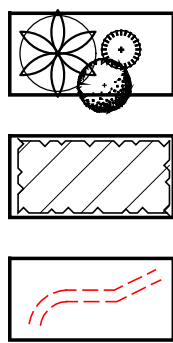
Issue	Revision	Description
E	For Approval	
D	For Approval	
C	For Approval	
B	For Approval	
A	For Approval	

NH	RS	17.08.2020
NH	RS	25.02.2020
NH	RS	28.01.2020
NH	RS	03.07.2019
NH	RS	13.06.2019
Drawn	Check	Date

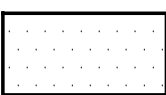
LEGEND



Trees to be retained
Trees to be removed
Proposed Trees

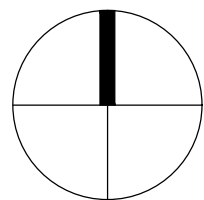


Proposed shrubs/accents
Existing vegetation
Existing driveway kerb



Mulch

Key Plan:



Client:
Dee Why RSL

Project:
Dee Why RSL Carwash

Drawing Name:
Landscape plan &
Planting schedule

Scale:
Job Number: SS19-4127
Drawing Number:
Issue: 101 E

FOR APPROVAL

SPECIFICATION
GENERAL NOTES

References

All plans and details included in the project documents shall be read in conjunction with this specification. All structural and civil works components of the landscape design shall be referenced to engineers' details and specifications. Read this specification in conjunction with the plant and materials schedules on the drawings. If in doubt about any detail or if conflicts are found in the documents, seek advice.

Workmanship and Materials

The whole of the landscape works shall be carried out by a competent, trained and qualified landscape contractor who is experienced in horticultural practices, landscape construction and planting techniques. The landscape contractor shall hold a current Building Contractors License and/or be a financial member of LNA Landscape Association NSW & ACT or equivalent organisations in other states.

EARTHWORKS

Excavation, Trimming and Filling

Except as otherwise noted in the contract, bulk excavation is excluded from the landscape works. After the completion of bulk excavation by others, trim and fill the excavated ground surfaces to achieve design levels to accommodate finish materials as detailed. Prepare the sub-grade surface as required for the various finished ground treatments.

Sub-soil Drainage

Keep the excavated works drained and free of standing water. Allow to supply and install sub-soil drainage pipes as required for the new works to ensure that all gardens are well drained. Connect the sub-soil drainage pipes to the nearest downstream stormwater pits. Include pipe filter socks and course sharp aggregate backfilling of trenches.

HARDWORKS

Furniture, Handrails, Balustrades

Supply and install the scheduled items in accordance with the manufacturer's recommendations, as detailed and in the locations shown on plan. Provide all footings and fixings required for the items to be stable and in accordance with applicable codes and standards.

Garden Walls, Fences, Steps, TGSI and Edging

Construct garden walls, fences, steps, TGSI and edging as shown on plan, as detailed and of the material scheduled. Provide footings, step nosings, tactile surfaces to comply with standards and applicable legislation. Refer to engineer's details for structural retaining walls, heavy duty slabs and concrete stairs.

Continuous, Unit and Loose Pavement

Install the scheduled material pavement to the locations shown on plan.

SOFTWORKS

Subsoil

Excavate and/or fill all garden beds to bring the top of subsoil to at least 300mm below finished design soil levels. Excavate all turf areas to bring the subsoil to at least 100mm below finished design levels. In all areas shape the subsoil to fall to subsoil drains where applicable. Do not excavate within the drip line of trees and shrubs to be retained. Cultivate or rip the subsoil to a further depth of 100mm before placing top soil. Remove stones of size exceeding 25mm, clods of earth exceeding 50mm, and weeds, rubbish or other deleterious material brought to the surface during cultivation. Do not disturb services or existing tree roots. If necessary cultivate these areas by hand. During cultivation, thoroughly mix in materials required to be incorporated into the subsoil, as recommended in the soil testing results and to manufacturer's recommendations. Trim the surface to design levels again after cultivation.

Topsoil

Import topsoil for the garden and turf areas. Spread the topsoil on the prepared subsoil and grade evenly, compact lightly and uniformly in 150mm layers. Avoid differential subsidence and excess compaction and produce a finished topsoil surface which has the following characteristics:

- Finished to design levels, allowing for mulch or turf, which is to finish flush with adjoining hard surfaces such as paths and edges;
- Smooth and free from inorganic matter, stones or clods of soil;
- Graded to drain freely, without ponding, to catchment and/or sub-soil drains;
- Graded evenly to adjoining surfaces; and
- Ready for planting.

Supply and install the following imported topsoil mixes:

- Soil Mix Type A

- 60% soil mix (60% coarse sand and 40% black soil),
- 10% mushroom compost,
- 10% pine bark fines,
- 10% composted sawdust, and
- 10% composted manures.
- Soil Mix Type B
 - 80% washed river sand, and
 - 20% black soil.

Fertiliser

Provide proprietary fertilisers, delivered to the site in sealed containers marked to show manufacturer or vendor, weight, fertiliser type, N:P:K ratio, recommended uses, application rates and safety procedures. Apply appropriate fertiliser suited to the provenance of plants (indigenous or exotic) included in the design.

Plants

Supply plants in accordance with the landscape design drawings and schedules, which have the following characteristics:

- Large healthy root systems, with no evidence of root curl, restriction or damage;
- Vigorous, well established, free from disease and pests, of good form consistent with the species/variety;
- Hardened off, not soft or forced, and suitable for planting in the natural climatic conditions prevailing at the site in full sun, partial shade or full shade conditions;
- Grown in final containers for not less than twelve weeks;
- Trees, unless required to be multi-stemmed, shall have a single leading shoot; and
- Containers shall be free from weeds and of appropriate size in relation to the specified plant size.

Plant Installation

Following excavation of the planting hole, place and spread 15gms of wetting agent pre-mixed with one (1) litre of water. Place the plant correctly orientated to north or for best presentation. Backfill the planting holes with specified topsoil mixture. Lightly tamp and water to eliminate air pockets. Ensure that the backfill soil is not placed over the top of the root ball and that the root ball is not higher than the soil in which it is planted. Apply fertiliser, as specified around the plants in the soil at the time of planting.

Root Barrier

Supply and install root control barriers to all new tree plantings adjacent to walls, paths, kerbs and all service trenches, where their proximity poses a threat to the stability of the built infrastructure. Install in accordance with manufacturer's recommendations.

Drainage Cell

All drainage cell to be Atlantis "Flo-Cell" 30mm drainage cell, or approved equivalent.

Void Filler

All Void filler material to be Atlantis "Structural Fill", or approved equivalent.

Mulch

Unless noted otherwise, mulch shall be ANL "Forest Fines" approved proprietary recycled wood fibre or pine bark material. Place mulch in all garden beds to a depth of 50mm after all specified plants are installed. Keep mulch clear of all plant stems and rake to an even plane, flush with the surrounding surfaces evenly graded between design surface levels. Over fill to allow mulch to settle to the specified depth.

Stakes and Ties

Stakes shall be durable hardwood, straight, free of knots and twists, pointed at one end, in the following quantities and sizes for each of the various plant pot sizes:

- Plants (≥25 lt): 1 off 38 x 38 x 1200mm;
- Semi-advanced plants (≥75 lt): 2 off 50x50x 1800mm;
- Advanced (≥100 lt): 3 off 50 x 50 x 2400mm.

Turf

Turf shall be delivered to site as 25mm minimum thick cut rolls. Obtain turf from a specialist grower of cultivated turf. Turf shall have an even thickness, free from weeds and other foreign matter. Deliver turf to the site within 24 hours of being cut and lay it within 24 hours of delivery. Prevent it from drying out between cutting and laying. Lay the turf in the following manner:

- In stretcher pattern, joints staggered and close butted;
- Parallel long sides of level areas, with contours on slopes; and
- To finish flush, after lightly tamping, with adjacent finished surfaces and design levels.

IRRIGATION

The irrigation system shall be an automatic permanent system, with an irrigation controller self operated via a soil moisture sensor. The system shall be calibrated to deliver the optimum rate and volume of water appropriate to the type of plants in the design. The system shall be adjustable and fully serviceable. The layout of the entire irrigation system shall focus on delivering the required amount of water to maintain healthy and vigorous growth. The irrigation system shall be such that, component theft, vandalism, over-spray and wetting of paths shall be reduced to a minimum or completely eliminated by the use of drip, pop-up sprinklers and judiciously placed fixed spray emitters. Generally do not use fine mist emitters that provide a drifting mist that may wet paths and the buildings unless specifically required by the design.

LANDSCAPE MAINTENANCE

The Landscape Contractor shall rectify defects during installation and that become apparent in the works under normal use for the duration of the contract Defects Liability Period. Unless contracted otherwise, the Landscape Contractor shall maintain the contract areas by the implementation of industry accepted horticultural practices for 24 months from Practical Completion of the works. The landscape maintenance works shall include, but not be limited to:

- Replacing failed plants;
- Pruning;
- Insect and pest control;
- Fertilising;
- Maintaining and removing stakes and ties;
- Maintaining mulch;
- Mowing and top dressing;
- Irrigation and watering;
- Erosion control; and
- Weeding and rubbish removal.

Maintenance Log Book

Implement and keep a maintenance log book recording when and what maintenance work has been undertaken and what materials, actions and decisions have been used, implemented and concluded to keep the landscape always looking its best. Enter data daily and review information every 2 weeks. Observe trends and develop a maintenance regime around seasonal and observed event occurrences.

Maintenance Activities

During the defects maintenance period schedule the following activities to occur on a timely basis.

- **Plant replacement** - Replace plants that have failed to mature, die or are damaged. Replacement plants shall be in a similar size and quality and identical species or variety to the plant that has failed. Replacement of plants shall be at the cost of the landscape contractor unless advised otherwise. If the cause of the failure is due to a controllable situation then correct the situation prior to replacing plants. Observe and replace failed plants within 2 weeks of observation.
- **Pruning** - Prune dead wood, broken limbs, dead or infected foliage and as needed to develop strong, healthy plants to achieve the shape and form expected of the plant type. Observe daily and prune plants on a needs basis.
- **Insect, disease and pest control** - Avoid spraying:
 - if ever possible;
 - in wet weather or if wet weather is imminent;
 - if target plants are still wet after rain;
 - in windy weather; and
 - if non-target species are too close.

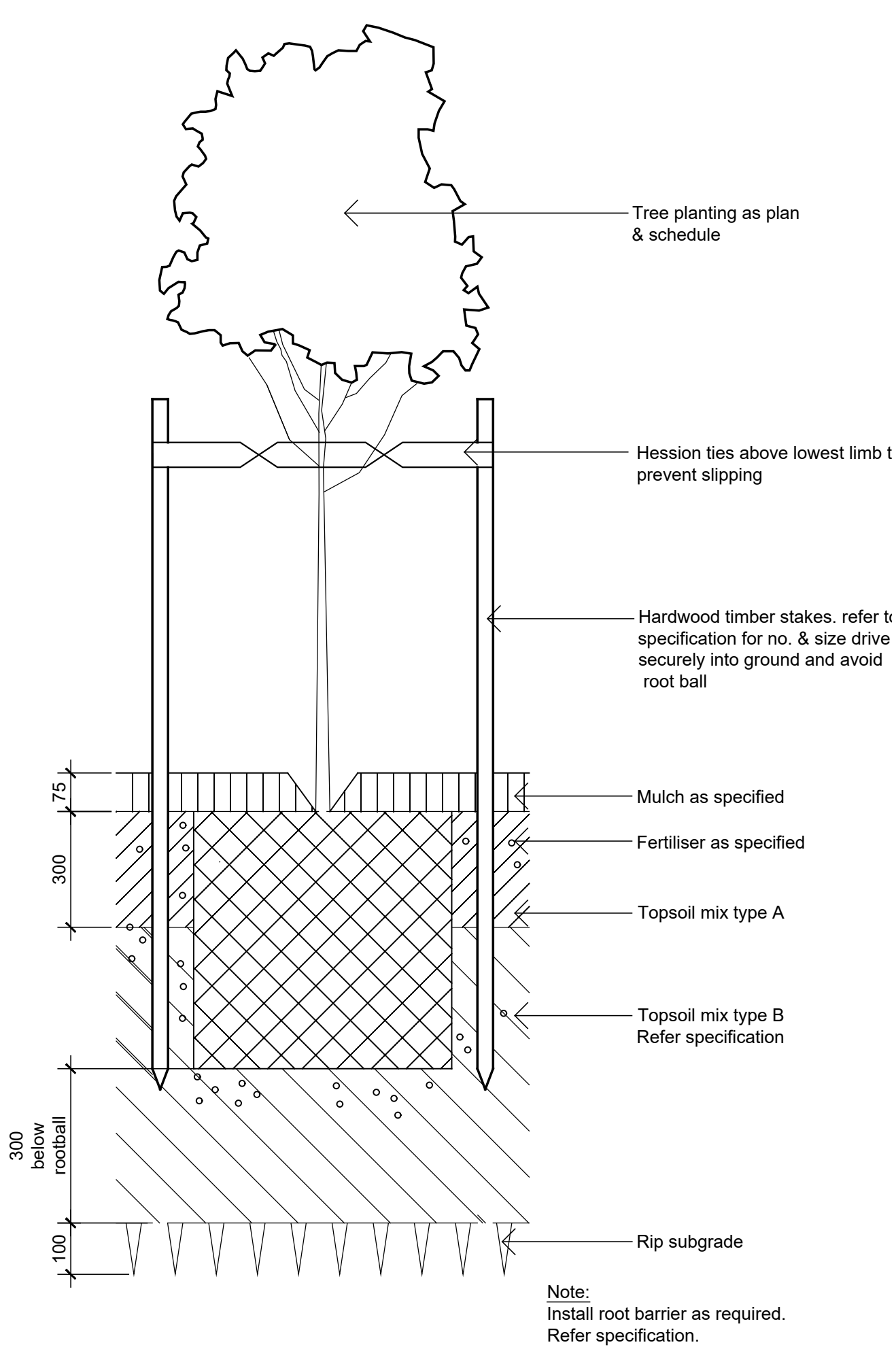
Immediately report to the Project Manager any evidence of intensive weed infestation, insect attack or disease amongst plant material. Submit all proposals to apply chemicals and obtain approval before starting this work. When approved, spray with herbicide, insecticide, fungicide as appropriate in accordance with the manufacturers' recommendations. Observe daily and act as necessary to control any infestation or disease. Record in the logbook all relevant details of spraying activities including:

- Product brand / manufacturer's name,
- Chemical / product name,
- Chemical contents,
- Application quantity and rate,
- Date of application and location,
- Results of application, and
- Use approval authority.

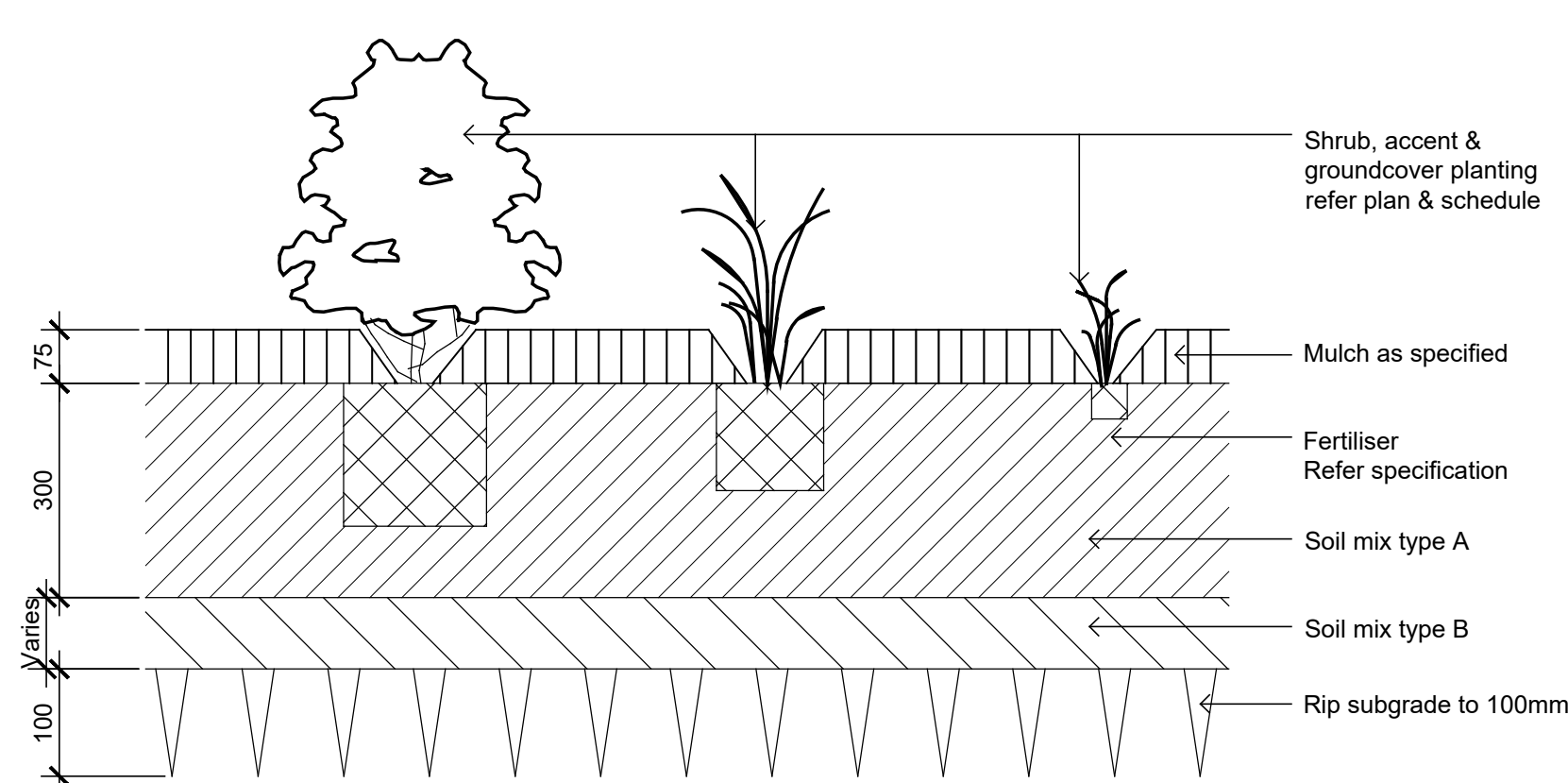
- **Fertilising** - Fertilise gardens with a proprietary slow release fertiliser applied in accordance with the manufacturer's directions and recommendations. Apply 6-12 monthly. Record in the logbook all relevant details of fertilising including:
 - Product brand / manufacturer's name,
 - Fertiliser / product name,
 - Application quantity and rate, and
 - Date of application and location.
- **Stakes and ties** - Adjust and replace as required to ensure plants remain correctly staked. Remove those not required at

the end of the planting establishment period (Defects Liability Period). Inspect and act at least every 2 weeks.

- **Maintaining mulch** - Maintain the surface in a clean, tidy and weed free condition and reinstate the mulch as necessary to ensure correct depth as specified. Observe weekly and replenish mulch as required.
- **Mowing and top dressing** - Mow the turf to maintain a grass height of between 30-50mm. Do not remove more than one third of the grass height at any one time. Remove grass clippings from the site after each mowing. Top dress to a maximum of 10mm to fill depressions and hollows in the surface. Mow weekly/fortnightly in warmer months. Mow monthly or as required in cooler months. Top dress at approximately 6 monthly intervals.
- **Irrigation and watering** - Maintain the irrigation system to sure that each individual plant receives the required amount of water to maintain healthy and vigorous growth. Adjust and calibrate as required. Provide additional watering, if necessary but inspect irrigation weekly and make repairs as necessary.
- **Erosion control** - Make any repairs necessary to soil erosion in gardens and check drainage as part of the response to an erosion event. Inspect every 2 weeks and act to repair any damage as soon as possible.
- **Weeding and rubbish removal** - During the plant establishment period remove by hand, rubbish and weed growth that may occur or re-occur throughout all planted, mulched and paved areas. The contractor shall target weeds that are capable of producing a major infestation of unwanted plants by seed distribution. Whenever possible, time weed removal to precede flowering and seed set. Constant observation and removal of weeds is essential.



01 Detail - 75-200L tree planting on grade
1:10



02 Detail - Shrub, accent & groundcovers planting on grade
1:10

NOT FOR CONSTRUCTION

© 2020 Site Image (NSW) Pty Ltd ABN 44 801 262 380 as agent for Site Image NSW Partnership. All rights reserved. This drawing is copyright and shall not be reproduced or copied in any form or by any means (graphic, electronic or mechanical including photocopy) without the written permission of Site Image (NSW) Pty Ltd Any license, expressed or implied, to use this document for any purpose what so ever is restricted to the terms of the written agreement between Site Image (NSW) Pty Ltd and the instructing party.

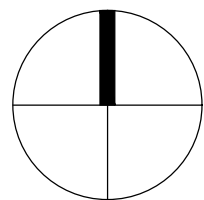
The contractor shall check and verify all work on site (including work by others) before commencing the landscape installation. Any discrepancies are to be reported to the Project Manager or Landscape Architect prior to commencing work. Do not scale this drawing. Any required dimensions not shown shall be referred to the Landscape Architect for confirmation.

Issue	Revision	Description
E	For Approval	
D	For Approval	
C	For Approval	
B	For Approval	
A	For Approval	

Drawn	Check	Date
NH	RS	17.08.2020
NH	RS	25.02.2020
NH	RS	28.01.2020
NH	RS	03.07.2019
NH	RS	13.06.2019

LEGEND

Key Plan:



S I T E I M A G E
Landscape Architects
Level 1, 3-5 Baptist Street
Redfern NSW 2016
Australia
Tel: (61 2) 8332 5600
Fax: (61 2) 9698 2877
www.siteimage.com.au

Client:
Dee Why RSL

Project:
Dee Why RSL Carwash

Drawing Name:
Landscape specification notes &
Landscape details

Scale:
Job Number:
Drawing Number:
Issue:

FOR APPROVAL

SS19-4127

Sheet _ of _

501 E