

***Arcare Warriewood*** - 23 Warriewood Rd, Warriewood NSW  
*External Signage Proposal*  
*Date: 18/4/18*  
*Version: 4*



Site Plan

- Sign Locations

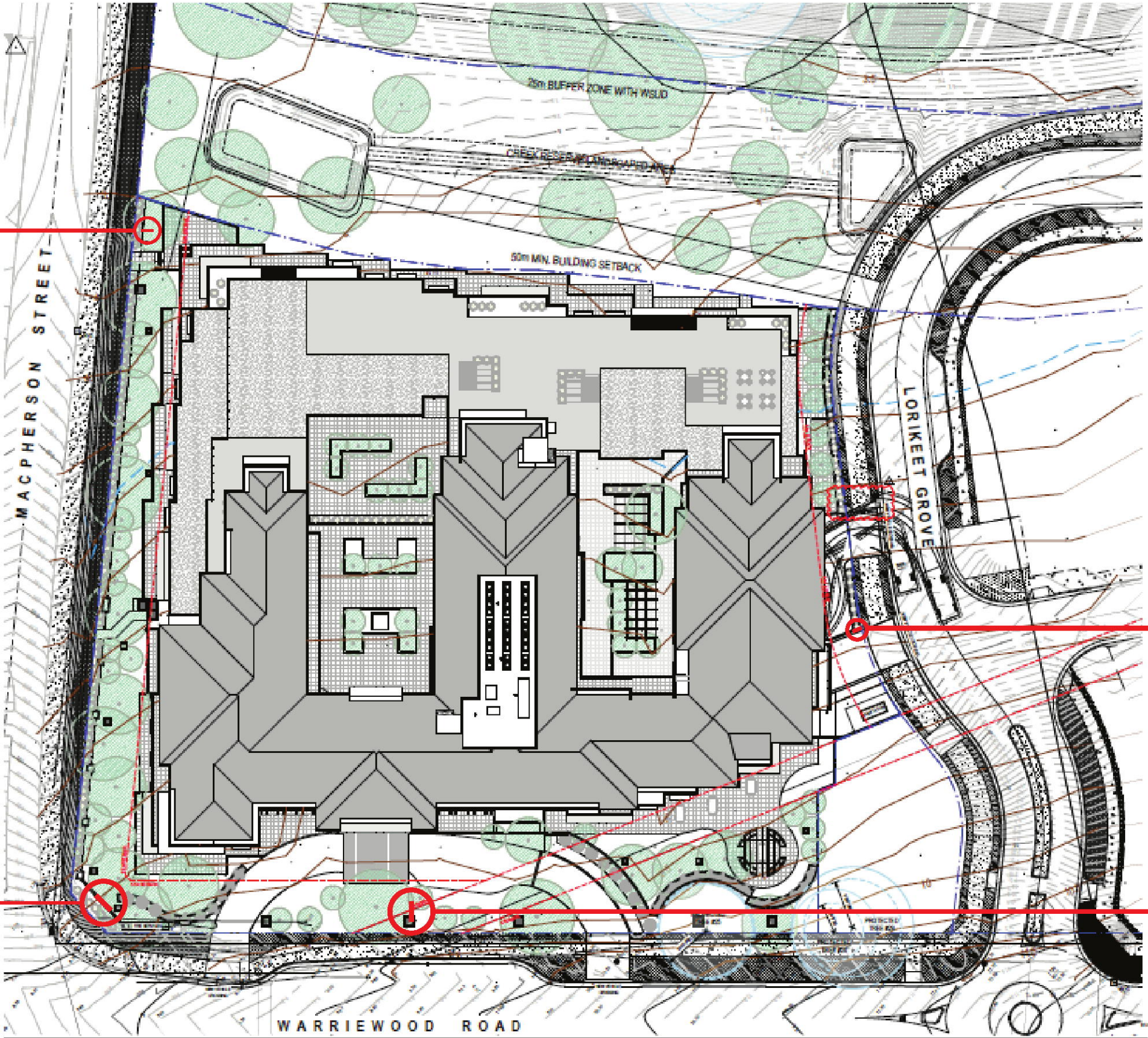
Sign 1  
Oversized Pylon  
(Double sided)

Sign 2  
Wall mounted sign  
Located on fence

Sign 3  
Standard Pylon ( Double sided)

THIS PLAN TO BE READ IN  
CONJUNCTION WITH  
  
DA2018/1195  
  
NORTHERN BEACHES COUNCIL

Sign 4  
Oversize Pylon  
(Double sided)



JOB No.	14834	DRAWING No.	00001
CLIENT	Arcare	DATE	See cover page
JOB NAME	Warriewood External Signage	DESIGN BY	CE
VERSION	See cover page	SCALE	1:10

These designs, drawings and specifications are the property of Braggs Signs Pty Ltd until payment is received in full. Any reproduction of the whole or part of this document without written permission of the owner constitutes an infringement of copyright.

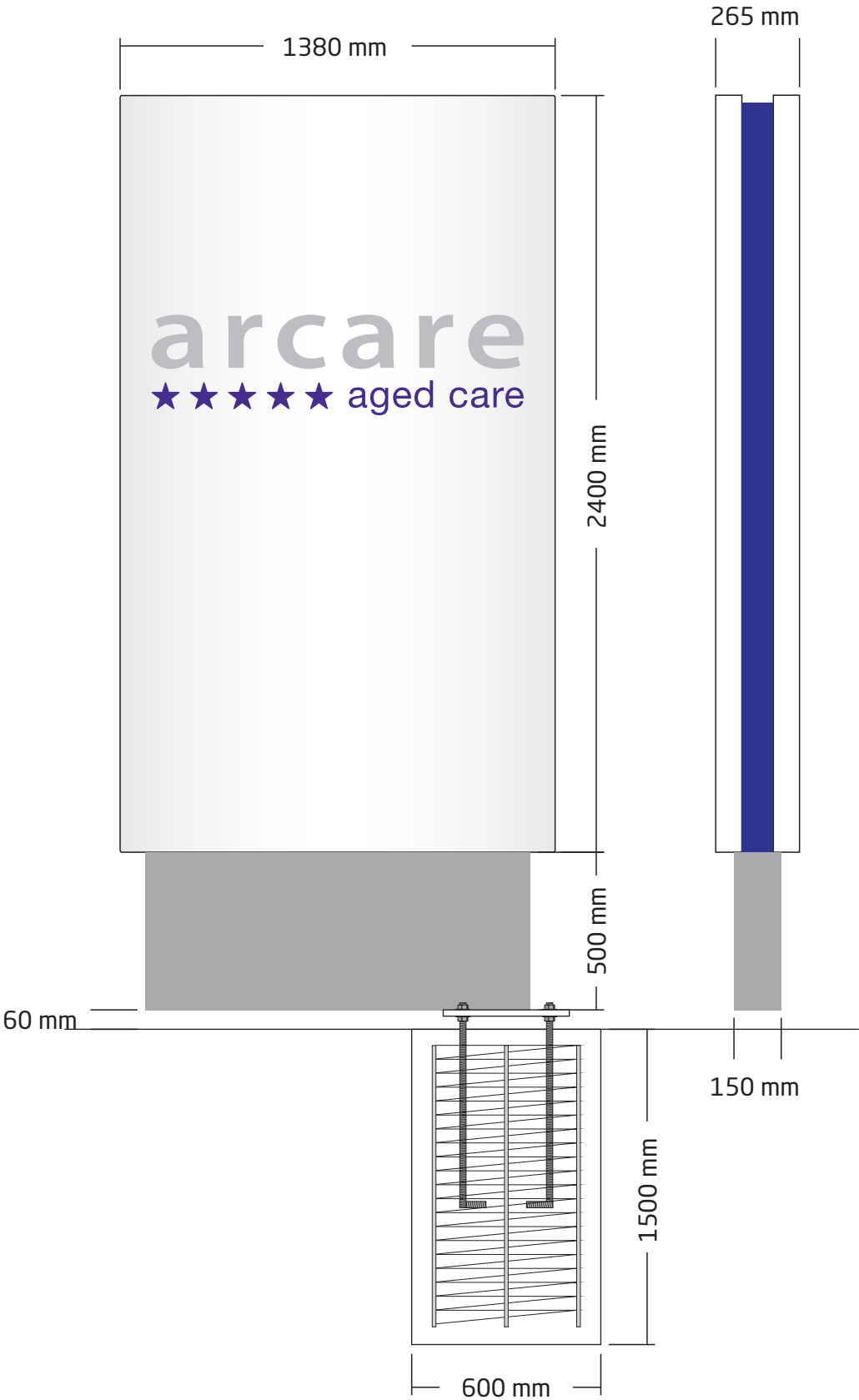


Sign 1  
Oversize Pylon - Double sided

- Supply + Install
- Qty 1 @ 1380 x 2960mm overall dimension.
  - 150 x 100 x 4mm steel sub frame with concrete footing and bolt cage.
  - 400 x 400 x 20mm base plate with 4no. M20 gal hold down bolts with 600mm emdebment.
  - Face section 3mm aluminium tray 1380 x 2400mm with curved face powder coated white. 15mm opal acrylic letters to read 'arcare' with 1.2mm no.4 brushed s/s face. Sub text illuminated to read "\*\*\*\*\*aged care" 3mm clear acrylic with 3mm (AN 377) purple acrylic face.
  - Illuminated strip around 3 sides of pylon to be 100mm wide 3mm (AN 377) purple acrylic to sit 15mm in from edge of main sign.
  - Base of sign to be 1220 x 500 x 3mm ali powder coated metallic silver.
  - All illumination by LED, includes transformer.

Power Requirements:

- Sign will draw 2.0A

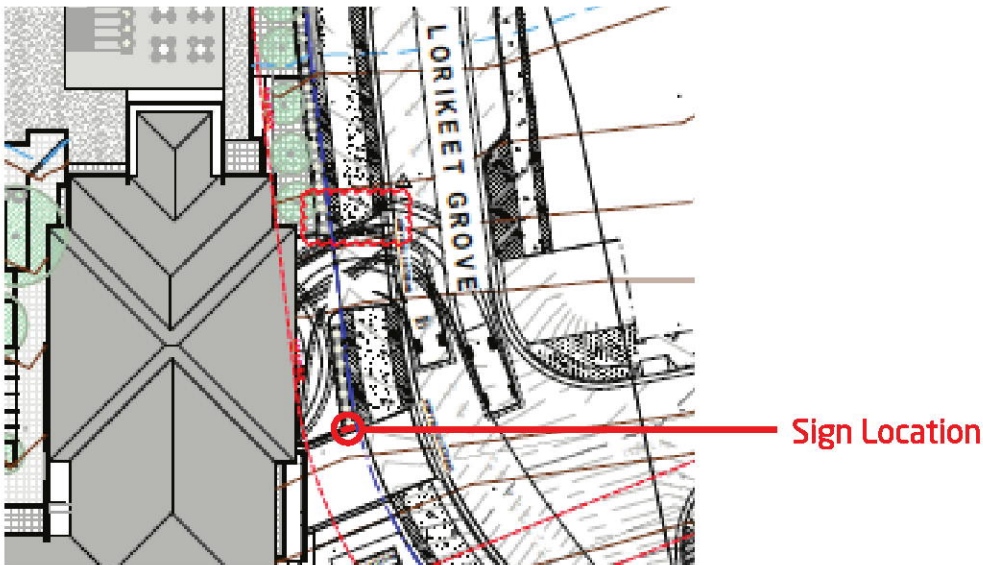
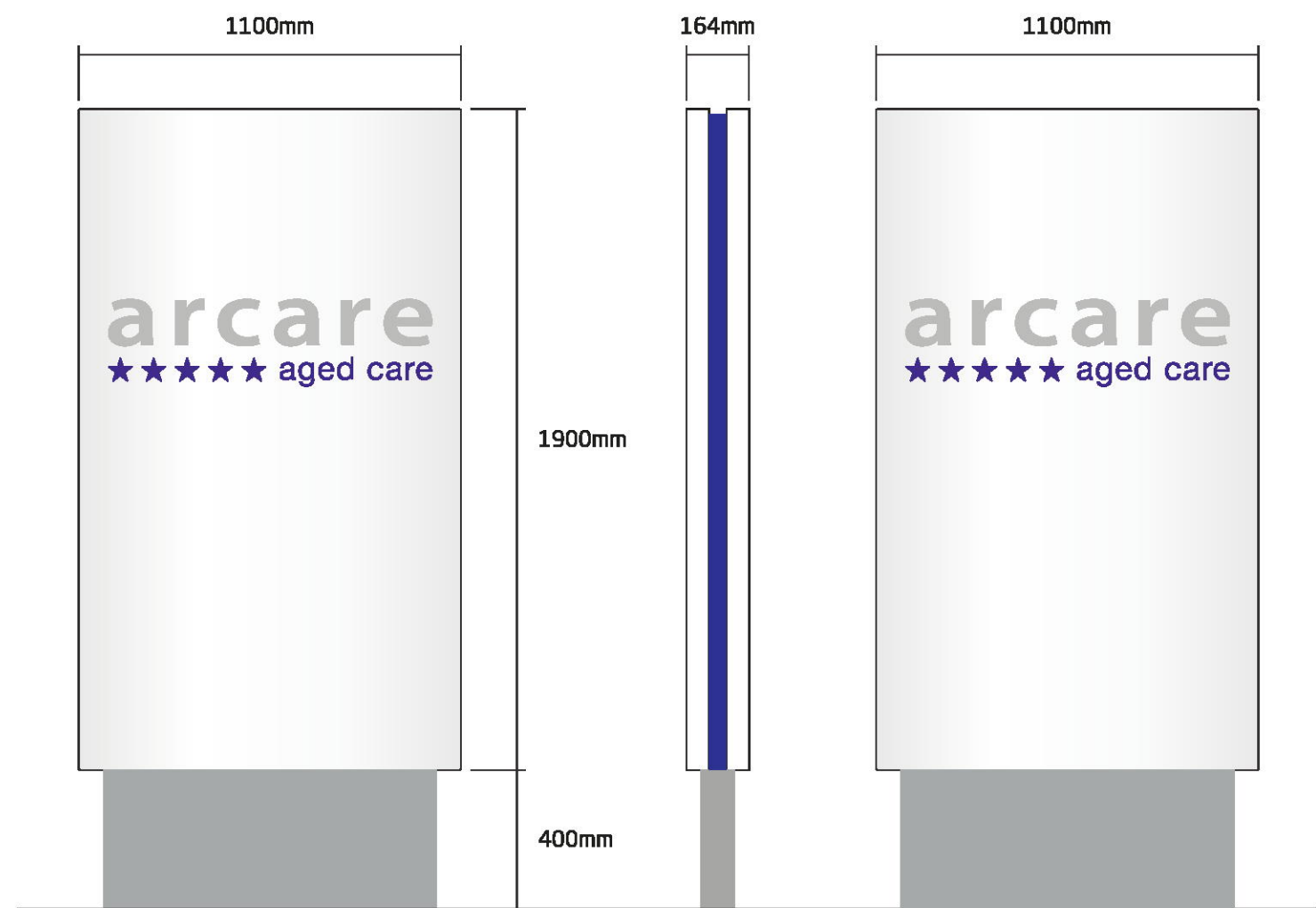


JOB No.	14834	DRAWING No.	00001	These designs, drawings and specifications are the property of Braggs Signs Pty Ltd until payment is received in full. Any reproduction of the whole or part of this document without written permission of the owner constitutes an infringement of copyright.
CLIENT	Arcare	DATE	See cover page	
JOB NAME	Warriewood External Signage	DESIGN BY	CE	
VERSION	See cover page	SCALE	1:10	



Sign 3  
Standard Pylon

- Supply + Install
- Qty 1 @ 1100 x 2300mm overall dimension.
  - 75 x 50mm steel footing frame with 900mm embedment.
  - Face section 2mm aluminium tray 1100 x 1900mm with curved face powder coated white.
  - Text router cut through face. Main text to read "arcare" to be illuminated 15mm opal acrylic with 1.2mm polished s/s face. Sub text illuminated to read "\*\*\*\*\*aged care" 3mm clear acrylic with 3mm (AN 377) purple acrylic face.
  - Illuminated strip around 3 sides of pylon to be 50mm wide x 3mm (AN 377) purple acrylic to sit 15mm in from edge of main sign.
  - Base of sign to be 960 x 400 x 3mm Ali powder coated metallic silver.
  - All illumination by LED, includes transformer.



THIS PLAN TO BE READ IN  
CONJUNCTION WITH  
  
DA2018/1195  
  
NORTHERN BEACHES COUNCIL

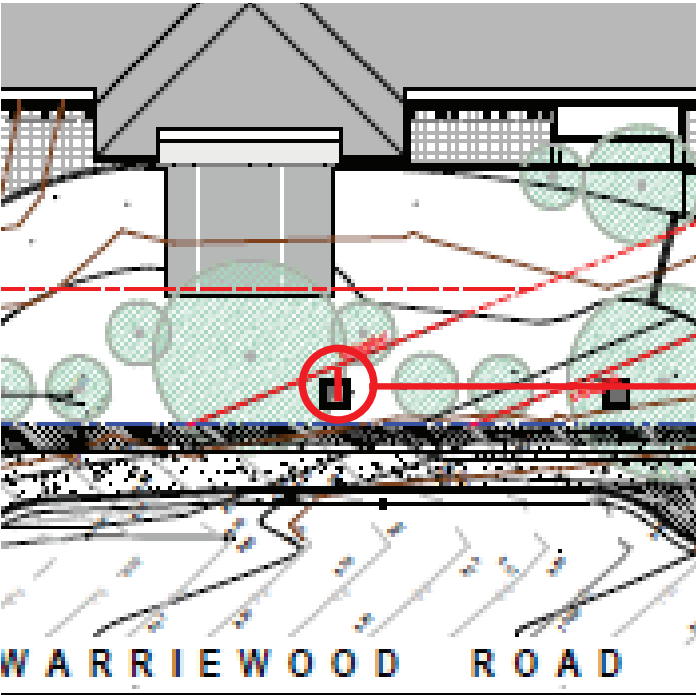
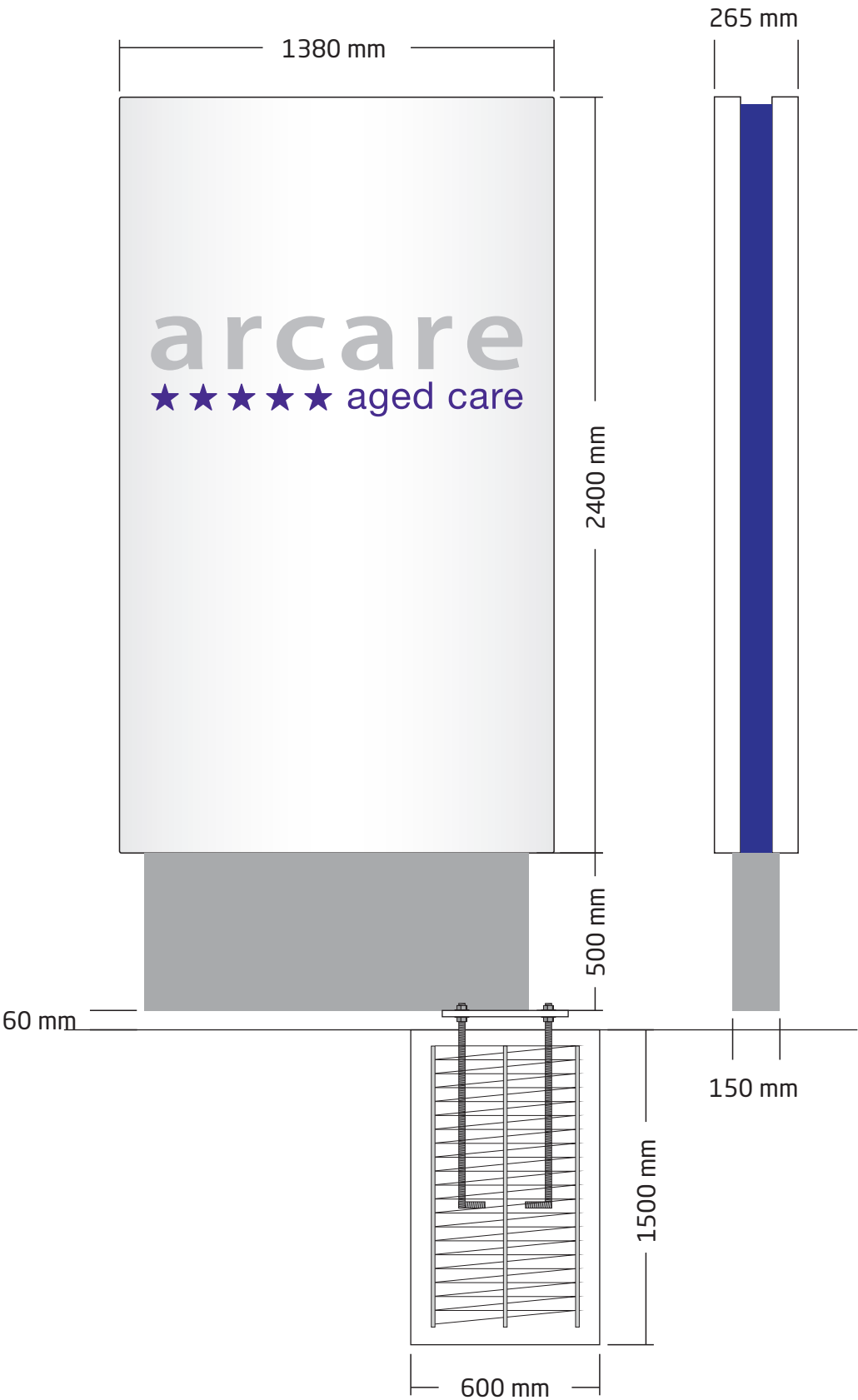
JOB No.	14834	DRAWING No.	00001
CLIENT	Arcare	DATE	See cover page
JOB NAME	Warriewood External Signage	DESIGN BY	CE
VERSION	See cover page	SCALE	1:10

These designs, drawings and specifications are the property of Braggs Signs Pty Ltd until payment is received in full. Any reproduction of the whole or part of this document without written permission of the owner constitutes an infringement of copyright.

Sign 4  
Oversize Pylon - Double sided

- Supply + Install
- Qty 1 @ 1380 x 2960mm overall dimension.
  - 150 x 100 x 4mm steel sub frame with concrete footing and bolt cage.
  - 400 x 400 x 20mm base plate with 4no. M20 gal hold down bolts with 600mm emdebment.
  - Face section 3mm aluminium tray 1380 x 2400mm with curved face powder coated white. 15mm opal acrylic letters to read 'arcare' with 1.2mm no.4 brushed s/s face. Sub text illuminated to read "\*\*\*\*\*aged care" 3mm clear acrylic with 3mm (AN 377) purple acrylic face.
  - Illuminated strip around 3 sides of pylon to be 100mm wide 3mm (AN 377) purple acrylic to sit 15mm in from edge of main sign.
  - Base of sign to be 1220 x 500 x 3mm ali powder coated metallic silver.
  - All illumination by LED, includes transformer.

**Power Requirements:**  
- Sign will draw 2.0A



Sign Location

JOB No.	14834	DRAWING No.	00001
CLIENT	Arcare	DATE	See cover page
JOB NAME	Warriewood External Signage	DESIGN BY	CE
VERSION	See cover page	SCALE	1:10

These designs, drawings and specifications are the property of Braggs Signs Pty Ltd until payment is received in full. Any reproduction of the whole or part of this document without written permission of the owner constitutes an infringement of copyright.