

WORK IN PROGRESS

NOTE THESE DRAWINGS WILL CHANGE



THIS PLAN IS TO BE READ IN  
CONJUNCTION WITH  
THE CONDITIONS OF DEVELOPMENT  
CONSENT

DA2019/0801

LEGEND:	
GENERAL	
[DX]X	DOOR TAG:
[W]XX	WINDOW NUMBER
↑ FFL 0.000	FINISHED FLOOR LEVEL
↑ RL 0.000	RELATIVE LEVEL
↑ [RL 0.000]	RELATIVE LEVEL MUST NOT CHANGE FOR COMPLIANCE
↑ SFL 0.000	STRUCTURAL FLOOR LEVEL
FINISHES	
[XXX]	FINISHES REFER TO THE MATERIAL AND FINISHES SCHEDULE

FIGGIS +  
JEFFERSON  
TEPA

FIGGIS + JEFFERSON TEPA PTY LTD

220 Willoughby Road, Crows Nest, NSW 2065 Australia

T 02 9438 5555 E studio@figgis.com.au

F 02 9439 5163 W www.figgis.com.au

ACN 002 875 • NSW Architects Registration  
Board Nominated Architect Stephen Figgis 3565

This drawing is protected under the Copyright Act 1968 and is the copyright of Figgis and Jefferson Architects. Do not reproduce, modify or transfer this drawing without the permission of Figgis and Jefferson Architects. Do not scale this drawing. Site Speed alterations only. Confirm all dimensions and levels on site prior to commencement of any work, preparation of shop drawings or fabrication of components.

PROJECT  
8 NARABANG WAY  
FOR  
BEACH GROUP OF COMPANIES P/L  
AT  
8 NARABANG WAY BELROSE NSW

DRAWING TITLE  
OVERALL SITE & GRID SETOUT PLAN

ARCHITECT  
JC  
DRAWN  
GN

LAST PRINTED  
21/12/2018  
TRUE NORTH

DRAWING NO.  
3656 DD 100  
ISSUE  
F

SCALE  
SCALE 0m 2 4 6 8 10

CONCRETE BUILDING METAL  
ROOF  
"ACE PACKWELL"  
#6  
SP81137

BOUNDARY 177°19'50" 107.86

PROPOSED WAREHOUSE AND  
ASSOCIATED OFFICE SPACES

BOUNDARY 177°19'50" 169.375

CONCRETE BUILDING METAL  
ROOF  
"WHITE GLO HOUSE"  
#10

NARABANG WAY

1 OVERALL SITE PLAN  
1:200



ISSUE: DATE: DESCRIPTION:  
XX 14.06.19 ISSUED FOR CLIENT REVIEW  
XY 18.06.19 REVISED ISSUED FOR CLIENT REVIEW

WORK IN PROGRESS

THIS PLAN IS TO BE READ IN CONJUNCTION WITH THE CONDITIONS OF DEVELOPMENT CONSENT  
DA2019/0801

NOTE:  
- ALL RAMP LEVELS SHOWN TO BE CONFIRMED BY CIVIL AND HYDRAULIC ENGINEER.  
- ALL DRAINAGE LEVELS SHOWN TO BE CONFIRMED BY HYDRAULIC ENGINEER.  
- FOR WET AREA DETAILS REFER TO DRAWINGS 400 AND 401.  
- FOR STAIR DETAILS REFER TO DRAWINGS 410, 411 AND 412.  
- DRAWINGS TO BE READ IN CONJUNCTION WITH THE MATERIALS AND FINISHES SCHEDULE.  
- FOR SLAB THICKNESSES AND COLUMN SIZES REFER TO HOLLOWCORE DRAWINGS.  
- FOR ABBREVIATIONS REFER TO GENERAL NOTES DRAWING 010.

LEGEND:	
GENERAL	
[XXX]	DOOR TAG:
[XXXX]	WINDOW NUMBER
FFL 0.000	FINISHED FLOOR LEVEL
RL 0.000	RELATIVE LEVEL
[RL 0.000]	RELATIVE LEVEL MUST NOT CHANGE FOR COMPLIANCE
SFL 0.000	STRUCTURAL FLOOR LEVEL
FINISHES	
[XXX]	FINISHES REFER TO THE MATERIAL AND FINISHES SCHEDULE

FIGGIS + JEFFERSON TEPA

FIGGIS + JEFFERSON TEPA PTY LTD  
220 Willoughby Road, Crows Nest, NSW 2065 Australia

T 02 9438 5555 E studio@figgis.com.au  
F 02 9439 5163 W www.figgis.com.au

ACN 002 875 • NSW Architects Registration  
Board Nominated Architect Stephen Figgis 3565

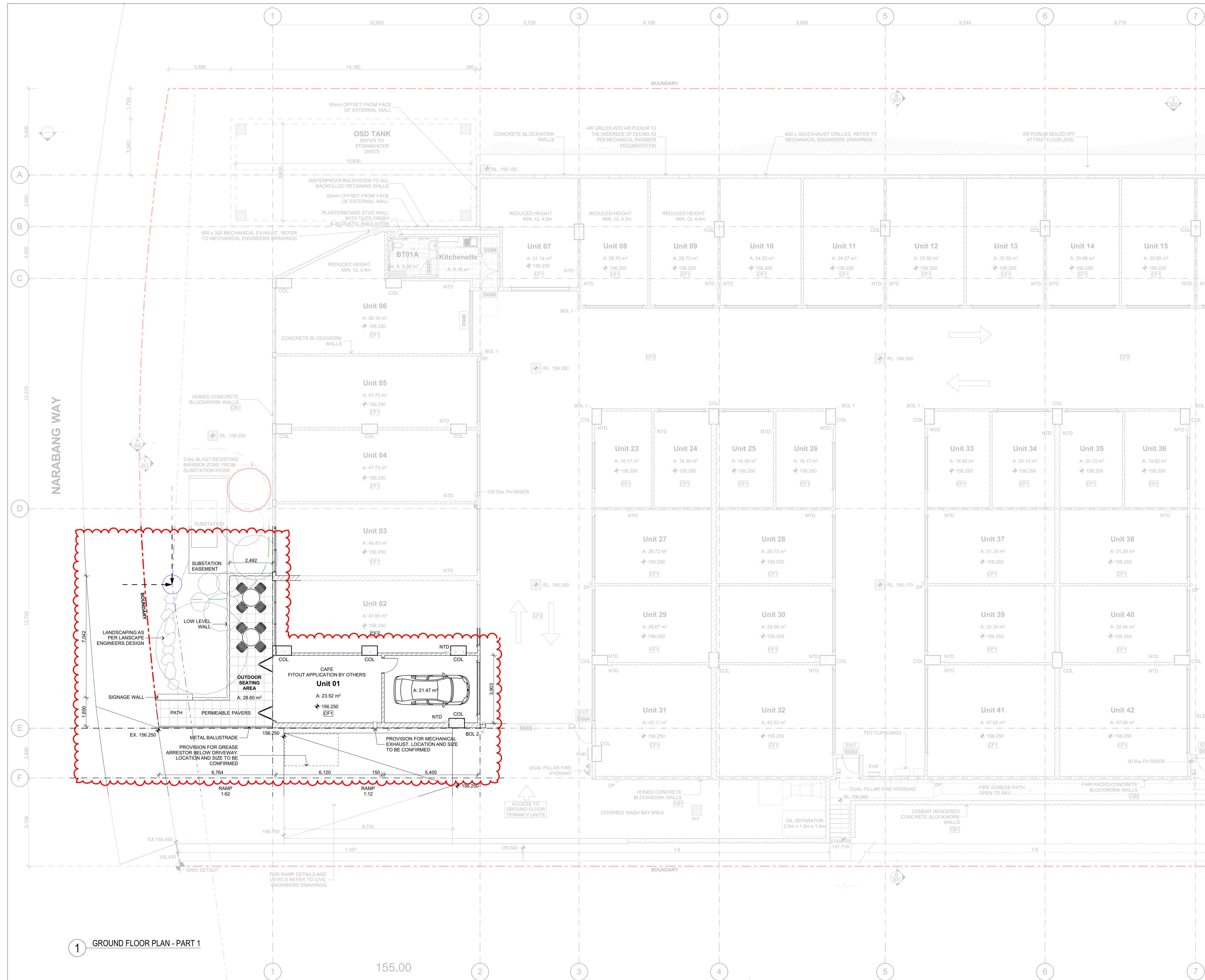
This drawing is protected under the Copyright Act 1968 and is the copyright of Figgis and Jefferson Architects. Do not reproduce, modify or transfer this drawing without the permission of Figgis and Jefferson Architects. Do not scale this drawing. Use Speed dimensions only. Confirm all dimensions and levels on site prior to commencement of any work, preparation of shop drawings or fabrication of components.

PROJECT  
8 NARABANG WAY  
FOR  
BEACH GROUP OF COMPANIES P/L  
AT  
8 NARABANG WAY BELROSE NSW

DRAWING TITLE  
GROUND FLOOR PLAN - PART 1

ARCHITECT  
JC  
LAST PRINTED  
18/06/2019  
DRAWN  
GN  
TRUE NORTH

DRAWING NO.  
3656 DD 110  
ISSUE  
XY  
SCALE  
0m 1 2 3 4 5



1 GROUND FLOOR PLAN - PART 1



ISSUE: DATE: DESCRIPTION:  
XX 14.06.19 ISSUED FOR CLIENT REVIEW

**WORK IN PROGRESS**

NOTE THESE DRAWINGS WILL CHANGE



**THIS PLAN IS TO BE READ IN  
CONJUNCTION WITH  
THE CONDITIONS OF DEVELOPMENT  
CONSENT**

**DA2019/0801**

**LEGEND:**

GENERAL	
	DOOR TAG:
	WINDOW NUMBER
	FFL 0.000 FINISHED FLOOR LEVEL
	RL 0.000 RELATIVE LEVEL
	RL 0.000 RELATIVE LEVEL MUST NOT CHANGE FOR COMPLIANCE
	SFL 0.000 STRUCTURAL FLOOR LEVEL
FINISHES	
	FINISHES REFER TO THE MATERIAL AND FINISHES SCHEDULE

**FIGGIS +  
JEFFERSON  
TEPA**

**FIGGIS + JEFFERSON TEPA PTY LTD**  
220 Willoughby Road, Crows Nest, NSW 2065 Australia

T 02 9438 5555 E studio@figgis.com.au  
F 02 9439 5163 W www.fggis.com.au

ACN 002 875 + NSW Architects Registration  
Board Nominated Architect Stephen Figgis 3565

This drawing is protected under the Copyright Act 1968 and is the copyright of Figgis and Jefferson Architects. Do not reproduce, modify or transmit this drawing without the permission of Figgis and Jefferson Architects. Do not scale this drawing. Use figured dimensions only. Confirm all dimensions and levels on site prior to commencement of any work, preparation of shop drawings or fabrication of components.

**PROJECT**  
8 NARABANG WAY  
**FOR**  
BEACH GROUP OF COMPANIES P/L  
**AT**  
8 NARABANG WAY BELROSE NSW

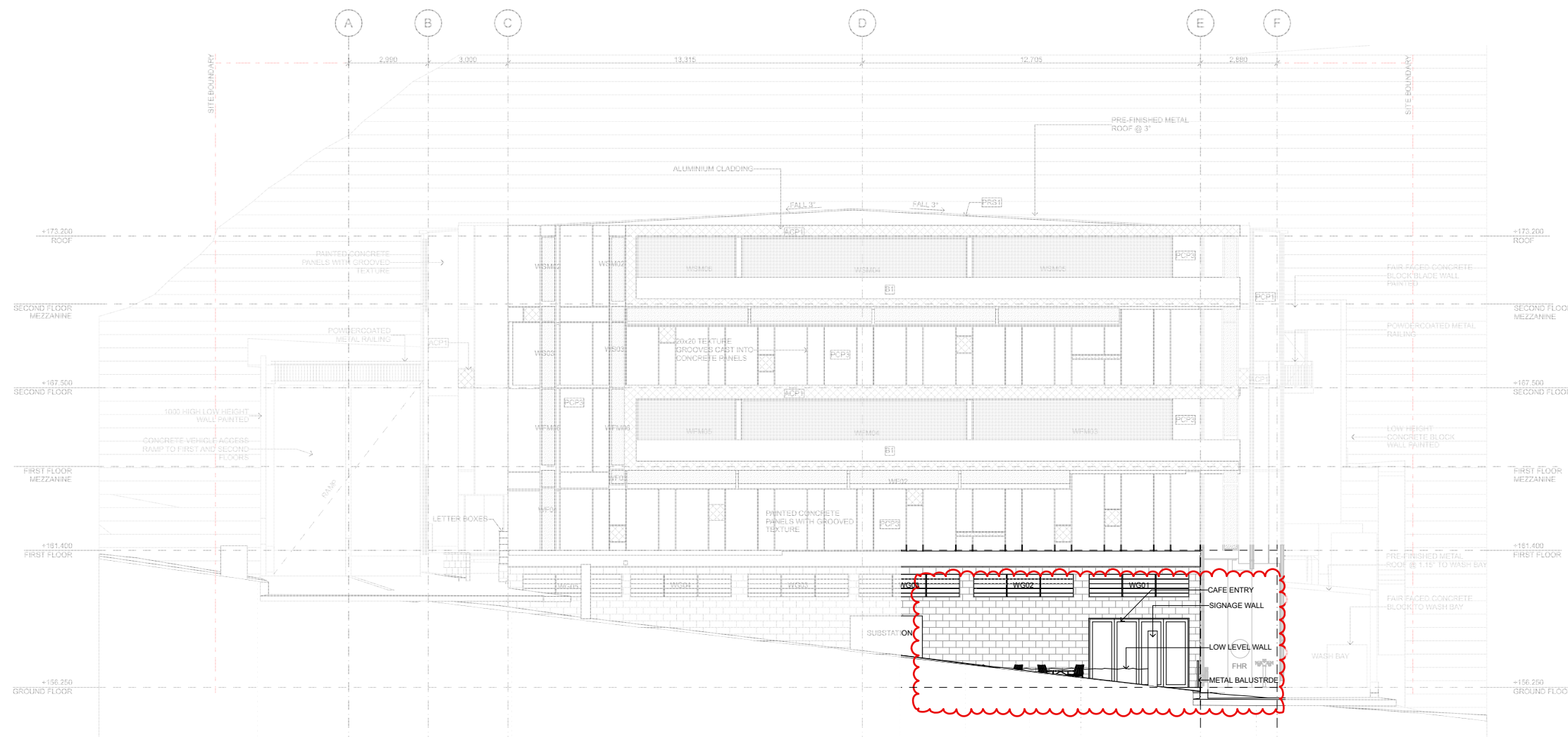
**DRAWING TITLE**  
SOUTH & NORTH ELEVATION

**ARCHITECT**  
JC **DRAWN**  
GN

**LAST PRINTED**  
14/06/2019

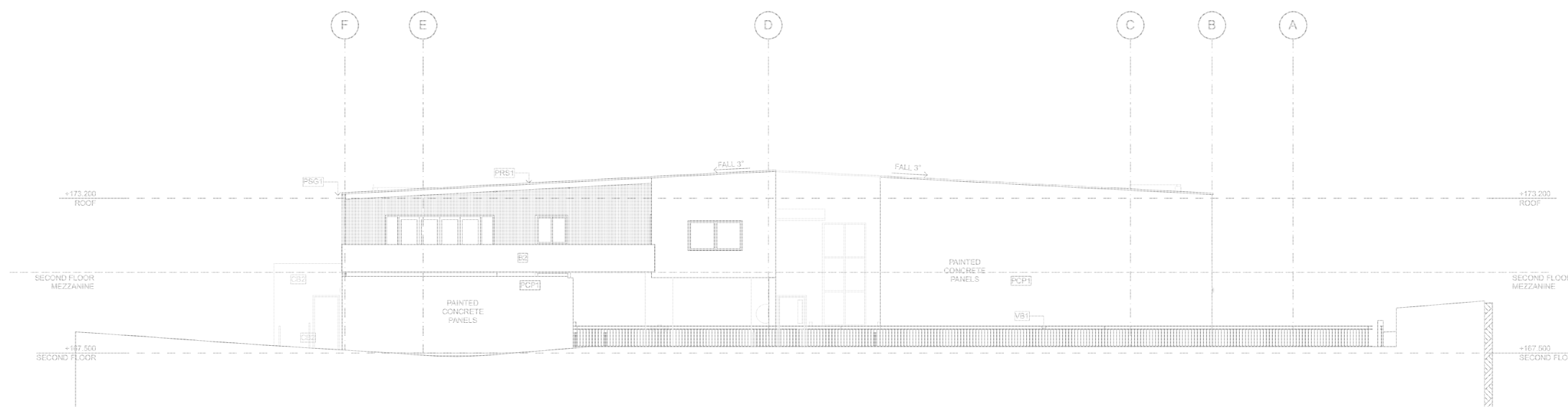
**DRAWING NO.**  
3656 DD 201 **ISSUE**  
XX

**SCALE**  
SCALE 0m 1 2 3 4 5



**SOUTH ELEVATION**

**1**



**NORTH ELEVATION**

**2**