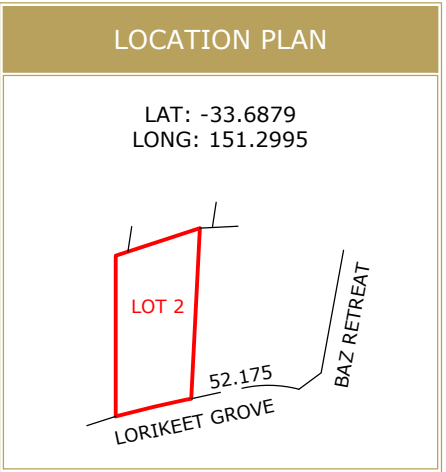
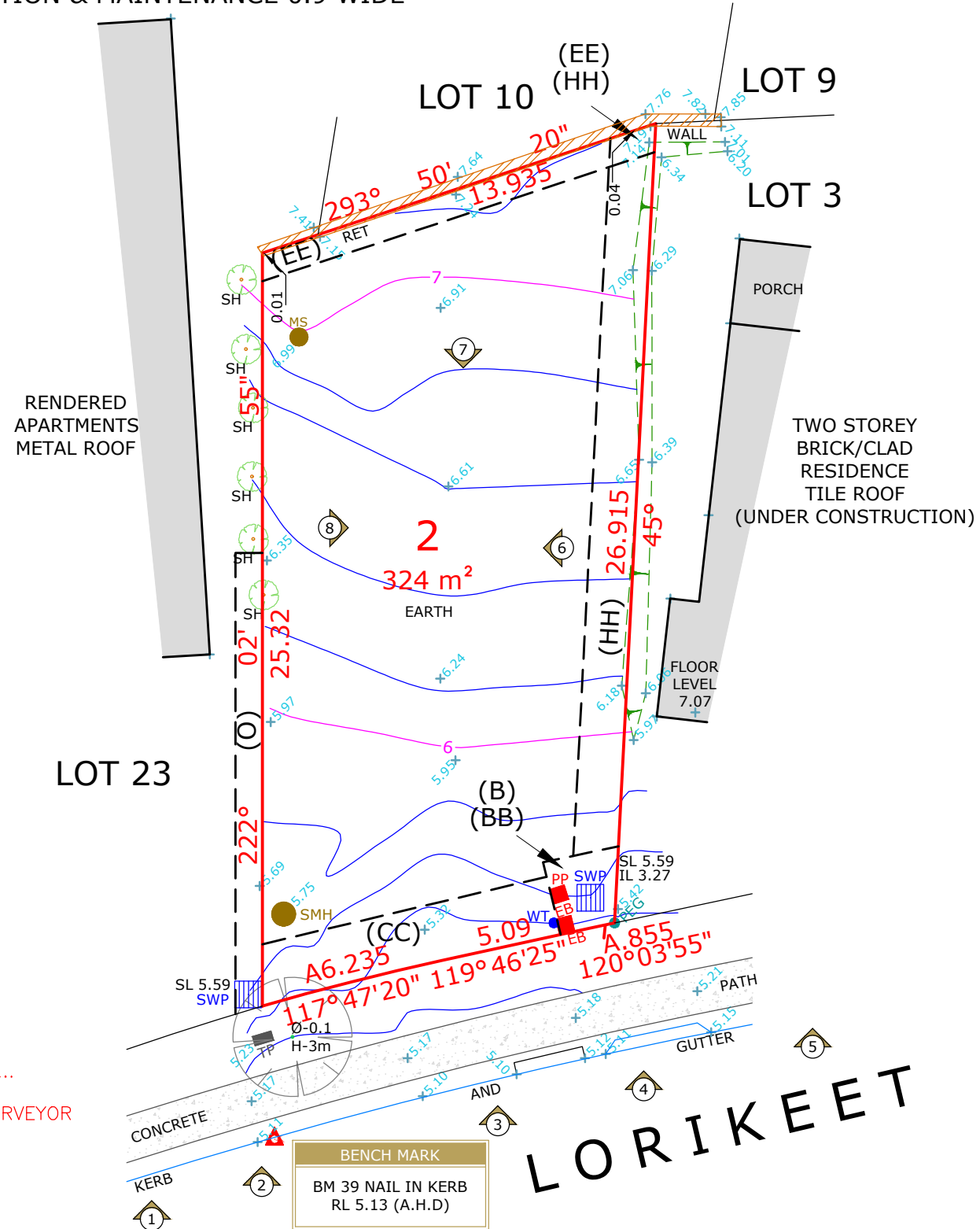
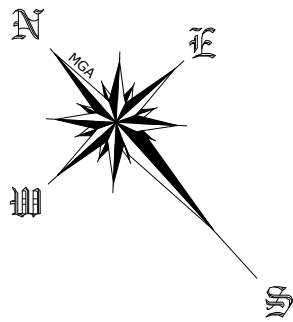


- (B): EASEMENT TO DRAIN WATER 2.5 WIDE (VIDE DP1206507)
- (BB): EASEMENT TO DRAIN WATER 2.5 WIDE
- (CC): EASEMENT TO DRAIN WATER 2 WIDE
- (EE): EASEMENT FOR ACCESS, MAINTENANCE & SUPPORT 0.9 WIDE
- (HH): EASEMENT TO DRAIN WATER 1.5 WIDE
- (O): EASEMENT FOR ACCESS, CONSTRUCTION & MAINTENANCE 0.9 WIDE



LEGEND	
	BENCH MARK
	PHOTO POINT
	GULLY PIT
	VEHICULAR/PRAM CROSSING
	TOP OF BANK
	BOTTOM OF BANK

ABBREVIATIONS	
EB	- ELECTRICAL BOX
EM	- ELECTRICAL METER
GM	- GAS METER
H	- HYDRANT
KO	- KERB OUTLET
LH	- LAMP HOLE
LP	- LIGHT POLE
MH	- MAN HOLE
MS	- MAINTENANCE SHAFT
PP	- POWER POLE
R	- HYDRANT RECYCLED
SH	- SHRUB
SIO	- SEWER INSPECTION OPENING
SMH	- SEWER MAN HOLE
SR	- STOP VALVE RECYCLED
SV	- STOP VALVE
SVP	- SEWER VENT PIPE
SWP	- STORM WATER PIT
T	- TREE
TP	- TELECOMMUNICATIONS PIT
VER	- VERANDAH
WT	- WATER TAG
WM	- WATER METER
WMR	- WATER METER RECYCLED
WC, GC, EC, TC	- SERVICE CONDUIT
W/C	- WATER CLOSET



M.J. CORK  
REGISTERED LAND SURVEYOR

REVISION	DESCRIPTION	DATE
A	CONTOUR UPDATED	03.11.2021

BENCH MARK  
BM 39 NAIL IN KERB  
RL 5.13 (A.H.D)

SEWER NOTE  
SEWER INFORMATION NOT AVAILABLE AT TIME OF SURVEY

SOURCE OF LEVELS  
SSM 206408 RL 5.415  
DP 270907

**DRAWING NOTES**

- CONTOURS SHOWN HAVE BEEN INTERPOLATED FROM SPOT LEVELS TAKEN ON-SITE AND ARE A REPRESENTATION OF THE TOPOGRAPHY ONLY.
- BOUNDARIES HAVE BEEN SURVEYED.
- SERVICES SHOWN HAVE BEEN LOCATED WHERE POSSIBLE BY FIELD SURVEY. PRIOR TO ANY SITE WORKS, THE RELEVANT AUTHORITY SHOULD BE CONTACTED TO DETERMINE EXACT POSITION OF ANY UNDERGROUND PIPES, CABLES ETC.
- DIMENSIONS OF ANY TREES SHOWN ON THE PLAN ARE APPROXIMATE.

PLAN BY

REGISTERED SURVEYORS AND CIVIL/STRUCTURAL ENGINEERS

CLIENT

CLIENT REFERENCE:

PROJECT LOCATION

**LOT 2 DP 270907**  
71 LORIKEET GROVE  
WARRIEWOOD, NSW

PLAN TYPE	LEVEL DATUM	
	IDENTIFICATION & CONTOUR PLAN	AUSTRALIAN HEIGHT DATUM
DRAWN		CHECKED
JOB REFERENCE	D.FISK	N.TAYLOR
	2018/322139	
	SURVEY DATE	DGN/DWG No.
	16.06.2021	322139-REV A
	SHEET SIZE	SCALE
	A3	1:200

