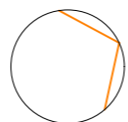




DKO Architecture (NSW) Pty Ltd
 42 Davies Street
 Surry Hills, NSW 2010
 ABN: 81956706590
 NSW: Nominated Architects
 Koos de Keijzer 5767 | David Randerson 8542

T +61 2 8346 4500
 info@DKO.com.au
 www.DKO.com.au


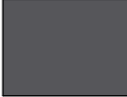
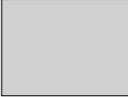




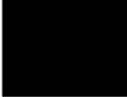


© DKO Architecture (NSW) Pty Ltd
 Except as allowed under copyright act, no part of this drawing may be reproduced or otherwise dealt with without written permission of DKO Architecture.



Rev.	Date	By	Ckd	Description
01	21/11/2019	WL	IL	DA SUBMISSION
02	26/11/2019	WL	IL	DA SUBMISSION
A	29/11/2019	WL	IL	DA SUBMISSION

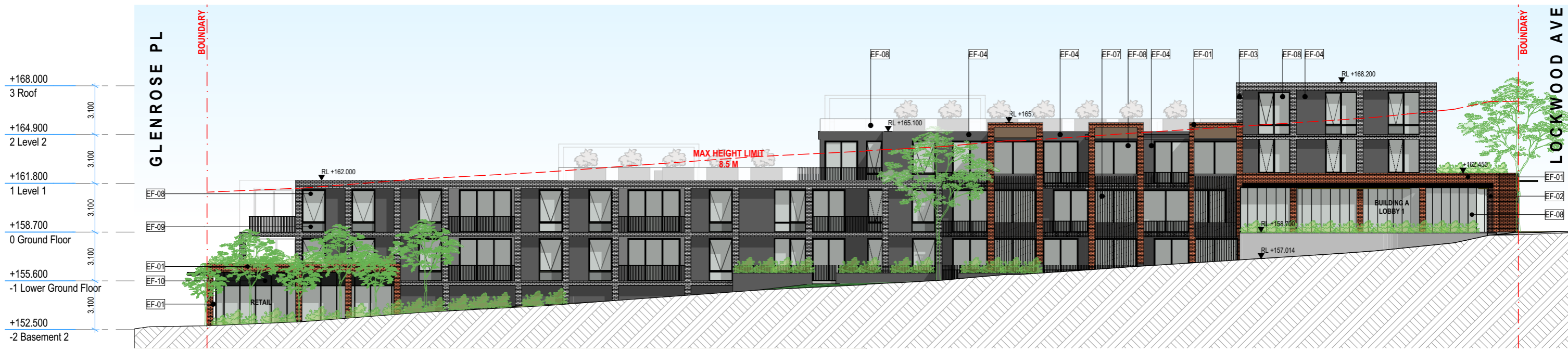
Project Name	28 Lockwood Av. Belrose	Project Number	11574
Project Address	28 Lockwood Ave, Belrose, NSW 2085	Drawing Name	Site Plan
Client	Platinum Property Group	Scale	1:400 @A3
		Date	Aug 2019
		Drawing Number	DA102
		Revision	A

LEGEND:

	EF-01 Finish: Face Brick Product: Brick Colour: Light Natural		EF-05 Finish: Painted Concrete Product: Pre-Cast Concrete Colour: Dark Grey 1		EF-09 Finish: Glass Product: Glass Colour: Grey
	EF-02 Finish: Face Brick Product: Brick Colour: Aged Natural		EF-06 Finish: Painted Concrete Product: Pre-Cast Concrete Colour: Dark Grey 2		EF-10 Finish: Glass Product: Glass Colour: Dark Grey
	EF-03 Finish: Face Brick Product: Brick Colour: White		EF-07 Finish: Painted Metal Product: Metal Colour: Black		
	EF-04 Finish: Painted Concrete Product: Pre-Cast Concrete Colour: Grey		EF-08 Finish: Glass Product: Glass Colour: Clear		



E-01 South Elevation
1:250



E-02 West Elevation
1:250



DKO Architecture (NSW) Pty Ltd
42 Davies Street
Surry Hills, NSW 2010
ABN: 81956706590
NSW: Nominated Architects
Koos de Keijzer 5767 | David Randerson 8542

T +61 2 8346 4500
info@DKO.com.au
www.DKO.com.au

© DKO Architecture (NSW) Pty Ltd
Except as allowed under copyright act, no part of this
drawing may be reproduced or otherwise dealt with
without written permission of DKO Architecture.

Rev.	Date	By	Ckd	Description
01	15/11/2019	WL	IL	CONSULTANT CO-ORDINATION
02	21/11/2019	WL	IL	DA
03	26/11/2019	WL	IL	DA
A	29/11/2019	WL	IL	DA

Project Name
Project Address

28 Lockwood Av. Belrose
28 Lockwood Ave,
Belrose, NSW 2085

Project Number
Drawing Name
Scale
Date

11574
Elevations - Sheet 1
1:250 @A3
Aug 2019

Client

Platinum Property Group

Drawing Number
Revision

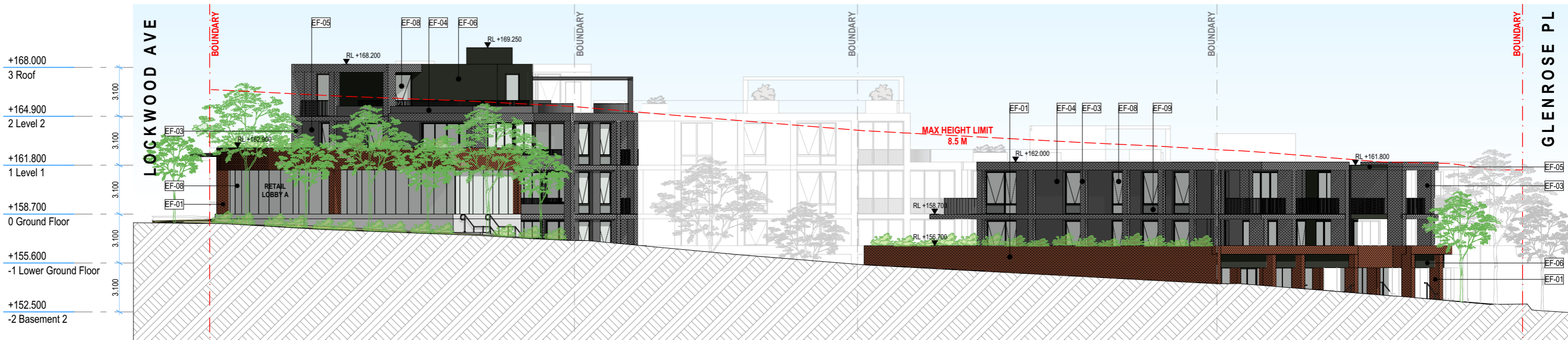
DA300
A

LEGEND:

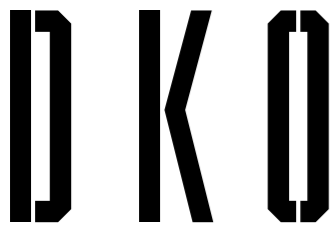
	EF-01 Finish: Face Brick Product: Brick Colour: Light Natural		EF-05 Finish: Painted Concrete Product: Pre-Cast Concrete Colour: Dark Grey 1		EF-09 Finish: Glass Product: Glass Colour: Grey
	EF-02 Finish: Face Brick Product: Brick Colour: Aged Natural		EF-06 Finish: Painted Concrete Product: Pre-Cast Concrete Colour: Dark Grey 2		EF-10 Finish: Glass Product: Glass Colour: Dark Grey
	EF-03 Finish: Face Brick Product: Brick Colour: White		EF-07 Finish: Painted Metal Product: Metal Colour: Black		
	EF-04 Finish: Painted Concrete Product: Pre-Cast Concrete Colour: Grey		EF-08 Finish: Glass Product: Glass Colour: Clear		



E-03 North Elevation
1:250



E-04 East Elevation
1:250



DKO Architecture (NSW) Pty Ltd
42 Davies Street
Surry Hills, NSW 2010
ABN: 81956706590
NSW: Nominated Architects
Koos de Keijzer 5767 | David Randerson 8542


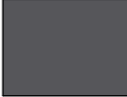
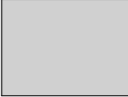




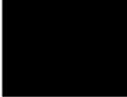


T +61 2 8346 4500
info@DKO.com.au
www.DKO.com.au

© DKO Architecture (NSW) Pty Ltd
Except as allowed under copyright act, no part of this drawing may be reproduced or otherwise dealt with without written permission of DKO Architecture.

Rev.	Date	By	Ckd	Description
01	15/11/2019	WL	IL	CONSULTANT CO-ORDINATION
02	21/11/2019	WL	IL	DA
03	26/11/2019	WL	IL	DA
A	29/11/2019	WL	IL	DA

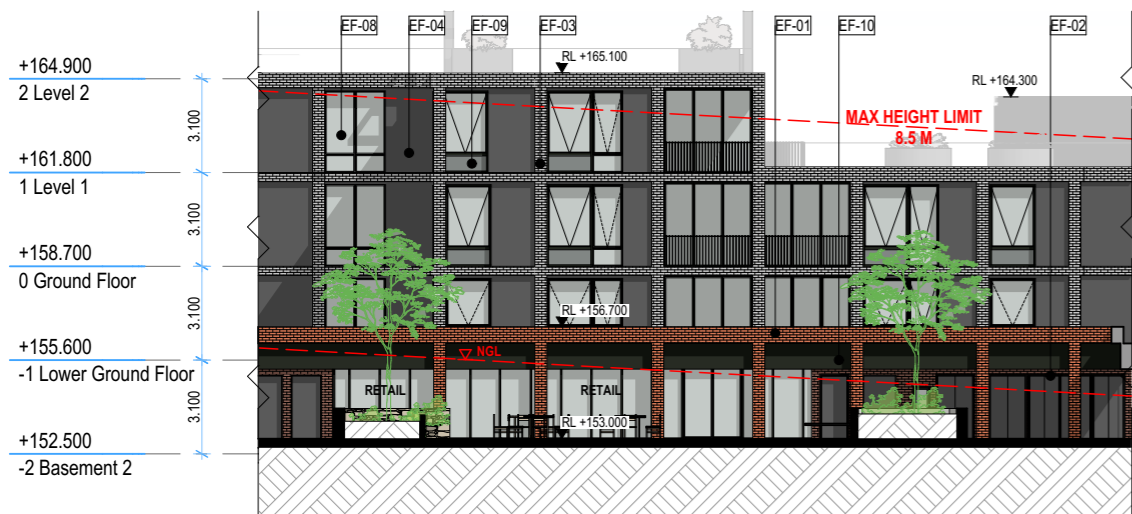
Project Name	28 Lockwood Av. Belrose	Project Number	11574
Project Address	28 Lockwood Ave, Belrose, NSW 2085	Drawing Name	Elevations - Sheet 2
		Scale	1:250 @A3
		Date	Aug 2019
Client	Platinum Property Group	Drawing Number	DA301
		Revision	A

LEGEND:

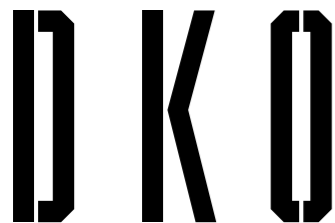
	EF-01 Finish: Face Brick Product: Brick Colour: Light Natural		EF-05 Finish: Painted Concrete Product: Pre-Cast Concrete Colour: Dark Grey 1		EF-09 Finish: Glass Product: Glass Colour: Grey
	EF-02 Finish: Face Brick Product: Brick Colour: Aged Natural		EF-06 Finish: Painted Concrete Product: Pre-Cast Concrete Colour: Dark Grey 2		EF-10 Finish: Glass Product: Glass Colour: Dark Grey
	EF-03 Finish: Face Brick Product: Brick Colour: White		EF-07 Finish: Painted Metal Product: Metal Colour: Black		
	EF-04 Finish: Painted Concrete Product: Pre-Cast Concrete Colour: Grey		EF-08 Finish: Glass Product: Glass Colour: Clear		



E-05 North Internal Elevation
1:250



E-06 West Internal Elevation
1:250



DKO Architecture (NSW) Pty Ltd
42 Davies Street
Surry Hills, NSW 2010
ABN: 81956706590
NSW: Nominated Architects
Koos de Keijzer 5767 | David Randerson 8542

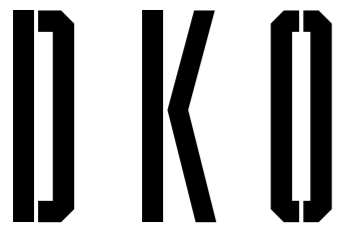
T +61 2 8346 4500
info@DKO.com.au
www.DKO.com.au
© DKO Architecture (NSW) Pty Ltd
Except as allowed under copyright act, no part of this drawing may be reproduced or otherwise dealt with without written permission of DKO Architecture.

Rev.	Date	By	Ckd	Description
01	15/11/2019	WL	IL	CONSULTANT CO-ORDINATION
02	21/11/2019	WL	IL	DA
03	26/11/2019	WL	IL	DA
A	29/11/2019	WL	IL	DA

Project Name	28 Lockwood Av. Belrose	Project Number	11574
Project Address	28 Lockwood Ave, Belrose, NSW 2085	Drawing Name	Elevations - Sheet 3
		Scale	1:10, 1:250 @A3
		Date	Aug 2019
Client	Platinum Property Group	Drawing Number	DA302
		Revision	A



Photomontage View Along Lockwood Avenue



DKO Architecture (NSW) Pty Ltd
 42 Davies Street
 Surry Hills, NSW 2010
 ABN: 81956706590
 NSW: Nominated Architects
 Koos de Keijzer 5767 | David Randerson 8542

T +61 2 8346 4500
 info@DKO.com.au
 www.DKO.com.au

© DKO Architecture (NSW) Pty Ltd
 Except as allowed under copyright act, no part of this
 drawing may be reproduced or otherwise dealt with
 without written permission of DKO Architecture.

Rev.	Date	By	Ckd	Description
01	21/11/2019	WL	IL	DA SUBMISSION
02	26/11/2019	WL	IL	DA SUBMISSION
A	29/11/2019	WL	IL	DA SUBMISSION

Project Name
 Project Address

28 Lockwood Av. Belrose
 28 Lockwood Ave,
 Belrose, NSW 2085

Project Number
 Drawing Name
 Scale
 Date

11574
 Perspectives - Sheet 1
 @A3
 Aug 2019

Client

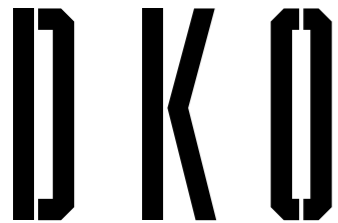
Platinum Property Group

Drawing Number
 Revision

DA303
A



Photomontage View Along Glenrose Pl / Ashworth Ave



DKO Architecture (NSW) Pty Ltd
 42 Davies Street
 Surry Hills, NSW 2010
 ABN: 81956706590
 NSW: Nominated Architects
 Koos de Keijzer 5767 | David Randerson 8542

T +61 2 8346 4500
 info@DKO.com.au
 www.DKO.com.au

© DKO Architecture (NSW) Pty Ltd
 Except as allowed under copyright act, no part of this
 drawing may be reproduced or otherwise dealt with
 without written permission of DKO Architecture.

Rev.	Date	By	Ckd	Description
01	21/11/2019	WL	IL	DA SUBMISSION
02	26/11/2019	WL	IL	DA SUBMISSION
A	29/11/2019	WL	IL	DA SUBMISSION

Project Name
 Project Address

28 Lockwood Av. Belrose
 28 Lockwood Ave,
 Belrose, NSW 2085

Project Number
 Drawing Name
 Scale
 Date

11574
 Perspectives - Sheet 2
 @A3
 Aug 2019

Client

Platinum Property Group

Drawing Number
 Revision

DA304
A