

urbaine architecture pty ltd

Suite 6, 15 The Corso
Manly NSW 2095

URBAINE Architecture pty ltd

Creation of Shadow studies for a proposed residential development at 46, Victoria Parade, Manly 2095. June, 2018

Description of Process:

URBAINE Architecture was engaged by ARC architects, of Level 7, 90 Pitt St, Sydney NSW 2000, to review shadow diagrams previously prepared by Woodhouse and Danks Architects Pty Ltd (reference: 110009 – DA40 Rev B dated 03.09.12) for a proposed development at 46, Victoria Parade in Manly, NSW 2095. The shadow diagrams served to illustrate the amount of additional shadow that would be cast upon the Eastern elevation of the adjoining apartment block at 42-44, Victoria Parade.

These original diagrams were subsequently revised by Design Cubicle Pty Ltd. to reflect the change in the extent of shadowing with the new design prepared by Design Cubicle: dated December 13th (no year date recorded on the document provided).

Urbaine Architecture was provided with a survey of the site with associated RL's, a 3d model from ARC Architects of their new proposal and the drawings from the Design Cubicle development proposal, together with the original shadow diagrams.

Urbaine modelled, in Autocad, a proprietary architectural modelling software, both the approved development, by Design Cubicle and also the apartment on the adjoining site at 42-44 Victoria Parade. This together with ARC's own 3d model, was combined into the survey model at the RL's indicated in the architectural documentation.

From this point the proprietary software permits the user to input the exact location of the site, together with the date and times of day required for the sun to be replicated within the 3d model and hence to produce accurate shadow projections onto the side of the 'virtual' building at 42-44 Victoria Parade. The date chosen was 22nd June, the Winter Solstice in the Southern Hemisphere and at hourly intervals from 9am to 1pm.

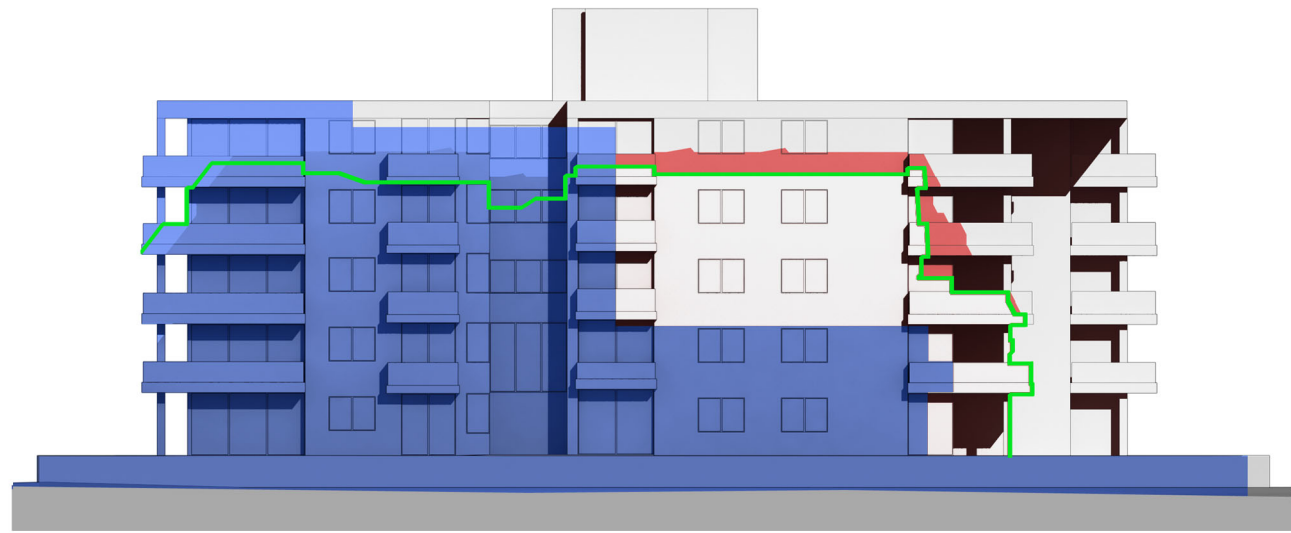
This was done, in the first instance, to verify the shadows provided previously, as per the approved design, and then to indicate the additional shadowing that would be incurred with the new proposal from ARC. These are illustrated in the attached file: ARC001.

The extent of existing shadowing from buildings to the East of the proposed site are shown in blue. The extent of additional shadowing created by the previously approved design is indicated by a green line. The extent of shadowing from the new ARC design, that is greater than that of the approved design, is then indicated in red.

Urbaine Architecture vouches for the accuracy of the shadow diagrams produced and regularly provides similar diagrams to architects, developers and Councils, throughout Sydney and NSW.

URBAINE also has extensive experience in true lighting studies, visual impact assessments, animations and multimedia presentations. Over 70% of staff are registered architects, having a full appreciation of architecture and the design process.

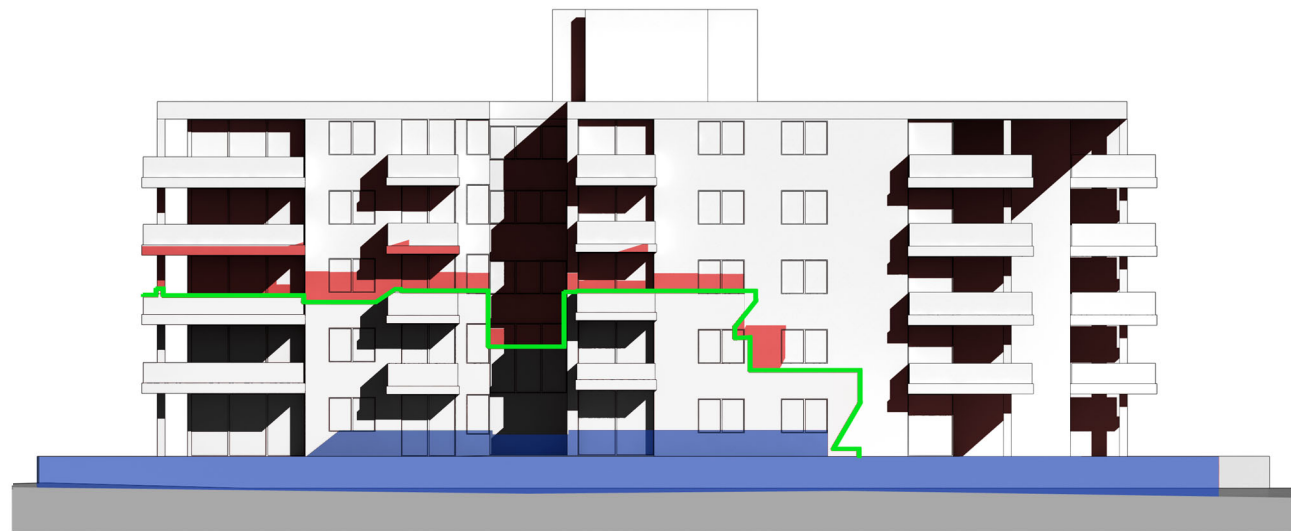
John Aspinall,
DIRECTOR, Urbaine Architecture.



9.00am



10.00am



11.00am







12.00pm



1.00pm

all shadows are indicated at 22nd June

-  self-shadowing of apartments at 42-44, Victoria Parade
-  existing shadows cast by adjoining buildings to west of site
-  extent of shadow cast by new development that exceeds existing shadows
-  extent of shadow cast by existing approved development

COPYRIGHT

This drawing is the copyright of urbaine pty ltd
It is issued on condition that it is not to be copied or reproduced in any form
or disclosed to any unauthorised person, either wholly, or in part without
the express written consent of urbaine pty ltd
Do not scale from this drawing.
This drawing is to be read in conjunction with all relevant architect's and
engineer's drawings and specifications. Contractors must verify all
dimensions / levels on site prior to construction and preparation of shop
drawings.

REVISIONS

NOTES

CLIENT:

ARCArchitects

DRAWING:

Shadow Diagrams 22nd June

PROJECT:

42-44 Victoria Parade,
Manly 2095

SCALE:

n.t.s.

ISSUE:

DWG. NO.

ARC001

urbaine
ARCHITECTURE

urbaine pty ltd , 6/15, The Corso, Manly, NSW 2095: Tel: 02 8355 6770