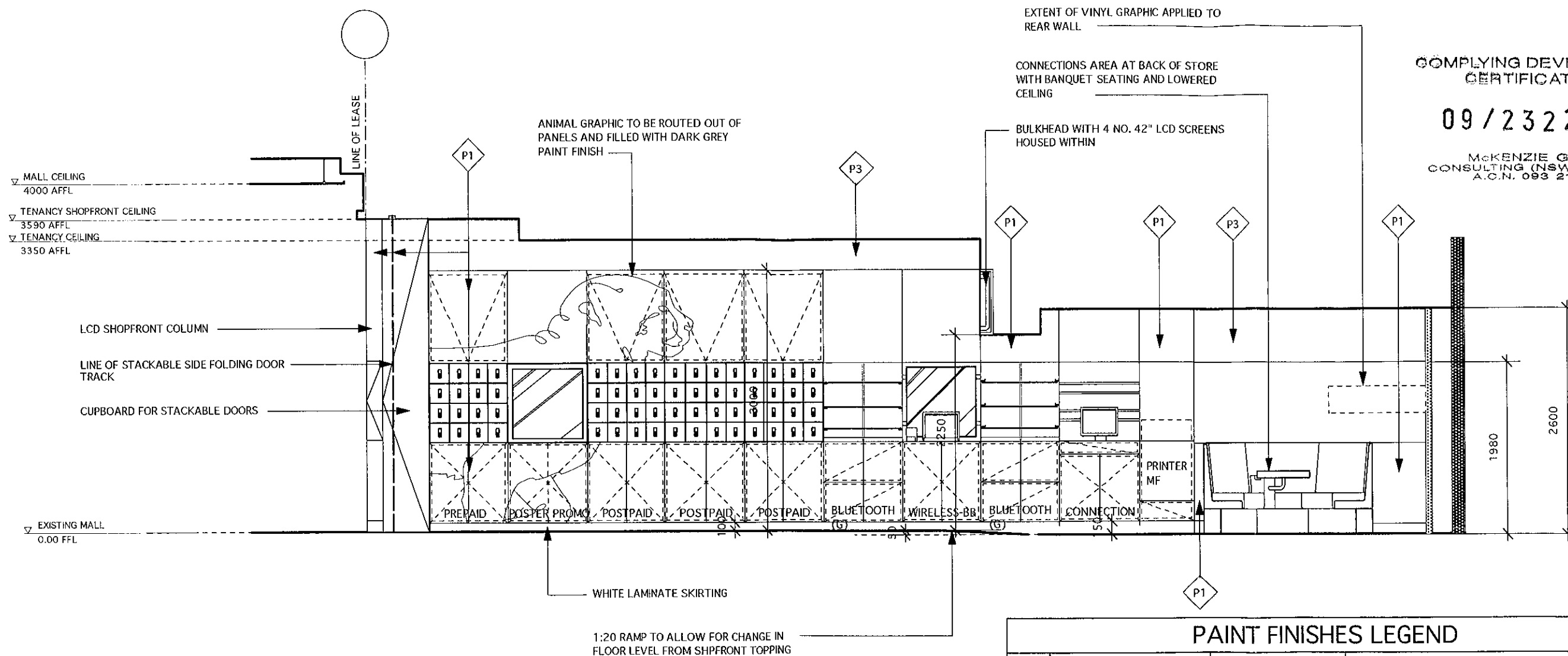


COMPLYING DEVELOPMENT
CERTIFICATE

09/2322-1

MCKENZIE GROUP
CONSULTING (NSW) PTY. LTD.
A.C.N. 093 211 993



PAINT FINISHES LEGEND				
	MATERIAL	CODE / FINISH	LOCATION	SUPPLIER
P1	WHITE 2 PACK PAINT	WHITE TINTER SEMI GLOSS	BULKHEAD AND CUPBOARD FACES THROUGH OUT STORE	Dulux
P2	YELLOW 2 PACK PAINT TO MATCH OPTUS CORPORATE COLOURS	INGRAMS EXISTING SPEC HIGH GLOSS 2 PAC	TOP AND BOTTOM OF PERIMETER RECESS	Dulux
P3	WHITE LOW SHEEN PAINT	WHITE TINTER LOW SHEEN	CEILING @FRONT OF STORE FRONT SHOP FACING SIDE AND UNDERSIDE OF BULKHEADWALL ABOVE 3000MM	Dulux
P4	DARK GREY LOW SHEEN PAINT	LEADMAN PG1-H7 LOW SHEEN	INSIDE FACES OF CEILING TROUGH	Dulux
P5	MID TONE GREY LOW SHEEN PAINT	MENISCUS PG1-H1 LOW SHEEN	LOWER CEILING AT BACK OF STORE AND ON BACK WALL FACING BULKHEAD RETURN	Dulux

ISSUE FOR APPROVAL

ELEVATION BB

1.0

00

SCALE 1:50

public design group

suite 107, jones bay wharf, 26-32 pirrama rd, pyrmont 2009
ph: 02 9660 1200 fax: 02 9660 1233 e: dan@publicdesigngroup.com

• copyright © public design group. this drawing is the property of public design group. design and copyright are reserved by them. the drawing is issued upon condition it is not copied, reproduced, retained or disclosed to any unauthorised person either wholly or in part without the prior consent in writing of public design group. all rights reserved.
• do not scale this drawing. all dimensions to be verified on site prior to construction. any inconsistencies to be reported to public design group immediately. if in doubt please ask public design group for clarification.
• any variation from these drawings requires written approval from public design group.
• this drawing has been produced to illustrate design intent. all shop drawings are to be submitted to and sanctioned by public design group prior to manufacture or construction.
• contractor to liaise with third party suppliers to confirm exact requirements.

client: OPTUS

project: YES OPTUS

project: SHOP 49 Stocklands Balgowlah

job number: OPTU-0160

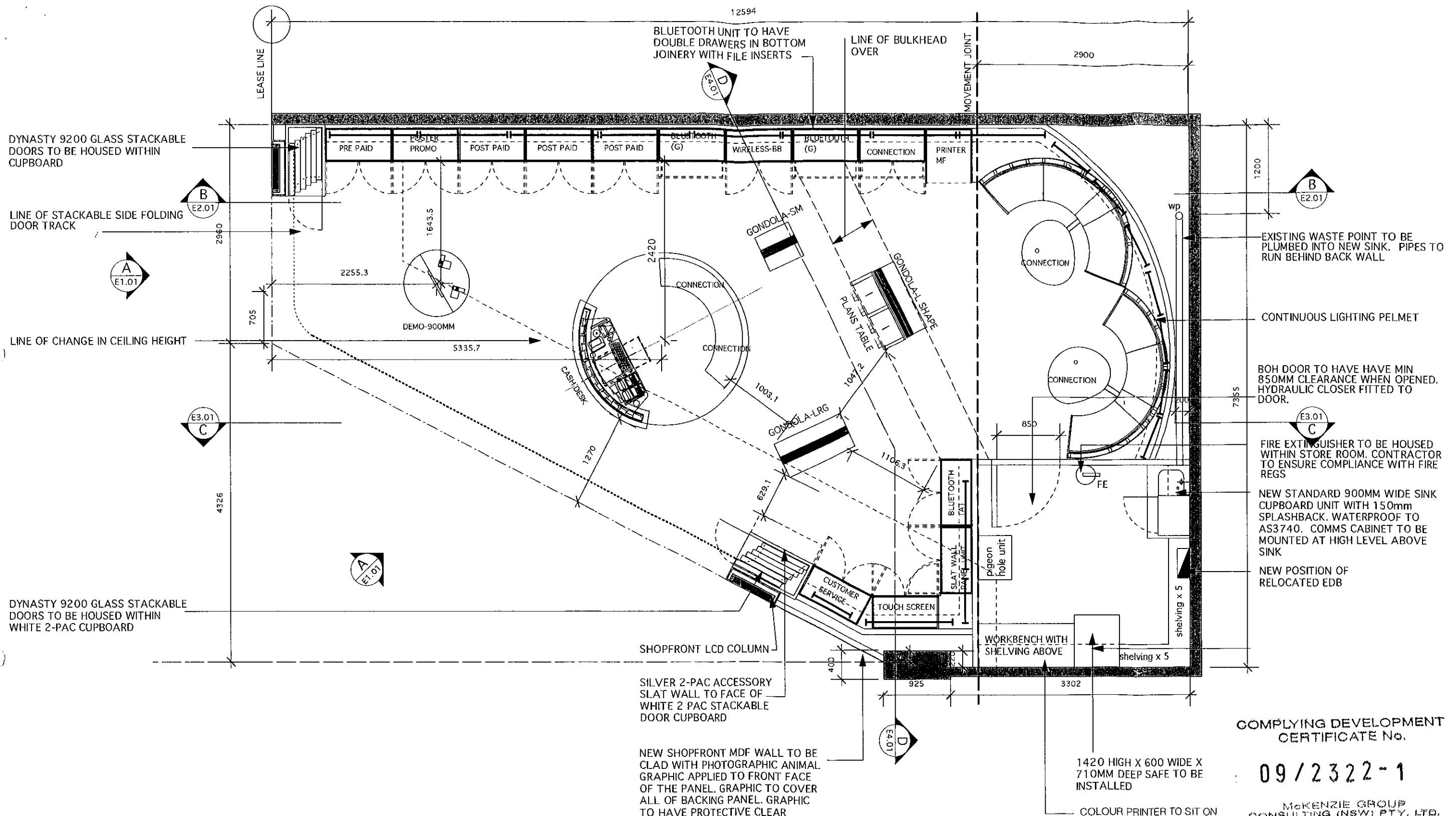
drawing: ELEVATION- BB

drawn by: ZL checked by: DC

client approval: XX issue: B

Issue	Notes	Date
B	ISSUE FOR APPROVAL	16.04.09
A	FIRST ISSUE	14.04.09

OPTU-E2.01



ISSUE FOR APPROVAL
 PLAN VIEW
 SCALE 1:50

1.0
 00

COMPLYING DEVELOPMENT
 CERTIFICATE No.
09/2322-1
 MCKENZIE GROUP
 CONSULTING (NSW) PTY. LTD.
 A.C.N. 093 211 998

TOTAL RETAIL AREA: 63sqm



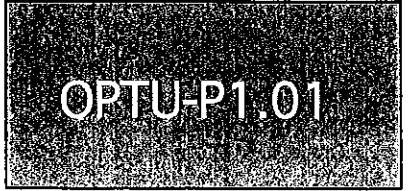
suite 107, Jones bay wharf, 19-21 Pirrama rd, pyrmont 2009
 ph: 02 9660 1200 fax: 02 9660 1233 e: dan@publicdesigngroup.com

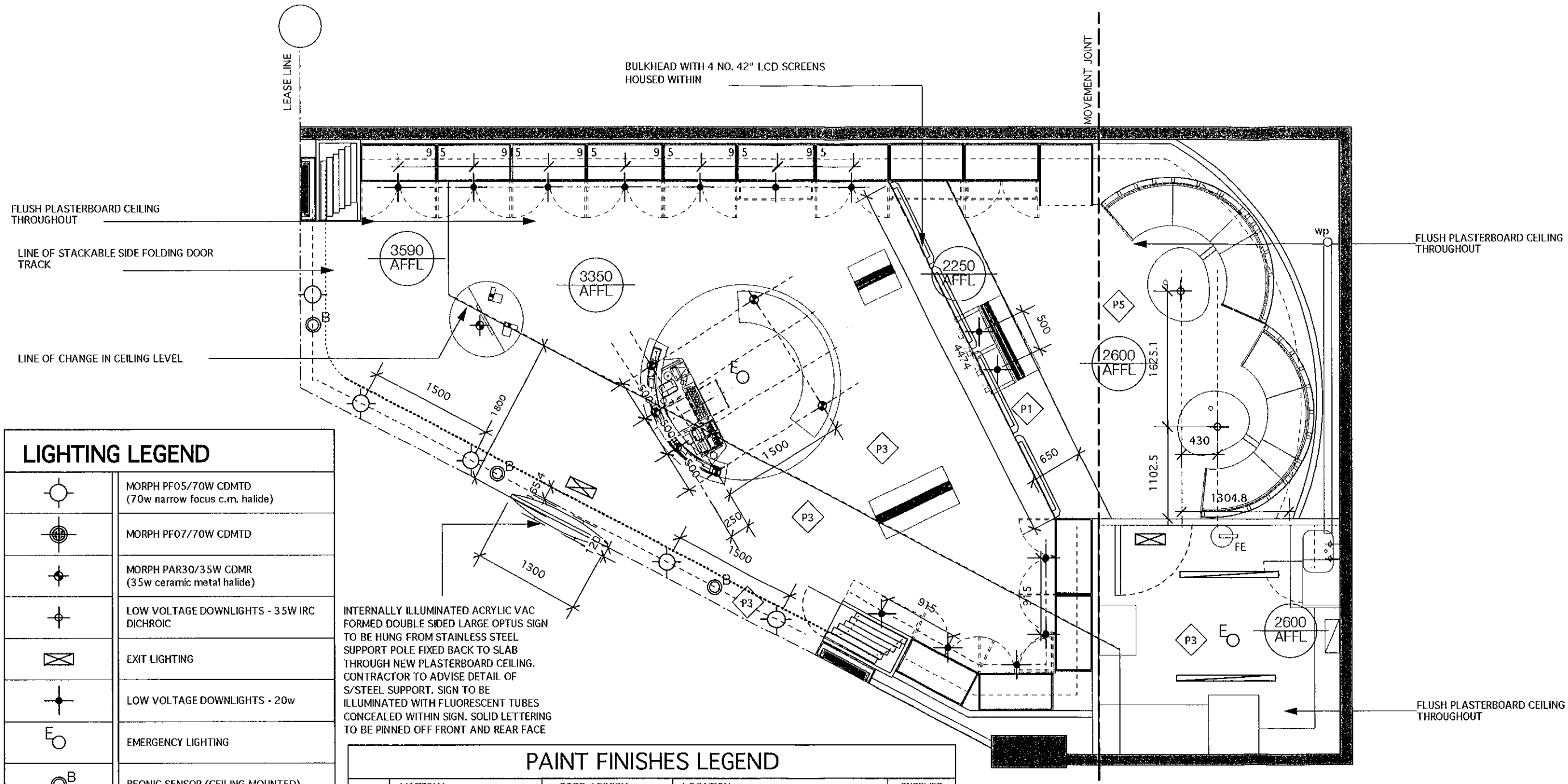
* copyright © public design group. this drawing is the property of public design group. design and copyright are reserved by them. the drawing is issued upon condition it is not copied, reproduced, retained or disclosed to any unauthorised person either wholly or in part without the prior consent in writing of public design group. all rights reserved.
 * do not scale this drawing. all dimensions to be verified on site prior to construction. any inconsistencies to be reported to public design group immediately. if in doubt please ask public design group for clarification.
 * any variation from these drawings requires written approval from public design group.
 * this drawing has been produced to illustrate design intent. all shop drawings are to be submitted to and sanctioned by public design group prior to manufacture or construction.
 * contractor to liaise with third party suppliers to confirm exact requirements.

client: OPTUS
 Yes Optus
 project: Shop 49 Stockland Balgowlah
 job number: OPTU-0160

drawing: GA- FLOOR PLAN
 drawn by: ZL checked by: DC
 client approval: XX issue: D

Issue	Notes	Date
D	New Doors	16.04.09
C	SEAT FLIPPED	14.04.09
B	ISSUE FOR APPROVAL	09.04.09
A	FIRST ISSUE	08.04.09





LIGHTING LEGEND	
	MORPH PF05/70W CDMT (70w narrow focus c.m. halide)
	MORPH PF07/70W CDMT
	MORPH PAR30/35W CDMR (35w ceramic metal halide)
	LOW VOLTAGE DOWNLIGHTS - 3.5w IRC DICHROIC
	EXIT LIGHTING
	LOW VOLTAGE DOWNLIGHTS - 20w
	EMERGENCY LIGHTING
	BEONIC SENSOR (CEILING MOUNTED)
	JOINERY PELMET FLUORESCENT FITTING 600mm LONG (SEE P1.01)
	JOINERY PELMET FLUORESCENT FITTING 1200mm LONG (SEE P1.01)
	LINEAR FLUORESCENT FITTING

INTERNALLY ILLUMINATED ACRYLIC VAC FORMED DOUBLE SIDED LARGE OPTUS SIGN TO BE HUNG FROM STAINLESS STEEL SUPPORT POLE FIXED BACK TO SLAB THROUGH NEW PLASTERBOARD CEILING. CONTRACTOR TO ADVISE DETAIL OF S/STEEL SUPPORT. SIGN TO BE ILLUMINATED WITH FLUORESCENT TUBES CONCEALED WITHIN SIGN. SOLID LETTERING TO BE PINNED OFF FRONT AND REAR FACE

PAINT FINISHES LEGEND				
	MATERIAL	CODE / FINISH	LOCATION	SUPPLIER
	WHITE 2 PACK PAINT	WHITE TINTER SEMI GLOSS	BULKHEAD AND CUPBOARD FACES THROUGH OUT STORE	Dulux
	YELLOW 2 PACK PAINT TO MATCH OPTUS CORPORATE COLOURS	INGRAMS EXISTING SPEC HIGH GLOSS 2 PAC	TOP AND BOTTOM OF PERIMETER RECESS	Dulux
	WHITE LOW SHEEN PAINT	WHITE TINTER LOW SHEEN	CEILING @FRONT OF STORE FRONT SHOP FACING SIDE AND UNDERSIDE OF BULKHEADWALL ABOVE 3000MM	Dulux
	DARK GREY LOW SHEEN PAINT	LEADMAN PG1-H7 LOW SHEEN	INSIDE FACES OF CEILING TROUGH	Dulux
	MID TONE GREY LOW SHEEN PAINT	MENISCUS PG1-H1 LOW SHEEN	LOWER CEILING AT BACK OF STORE AND ON BACK WALL FACING BULKHEAD RETURN	Dulux

ISSUE FOR APPROVAL
 PLAN VIEW
 SCALE 1:50

1.0
00

COMPLYING DEVELOPMENT CERTIFICATE No.
 09/2322-1
 MCKENZIE GROUP CONSULTING (NSW) PTY. LTD.
 A.C.N. 093 211 995



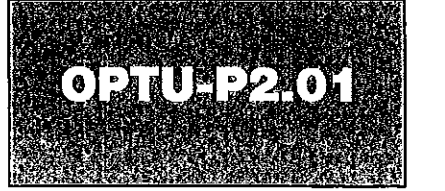
suite 107, jones bay wharf, 19-21 pirrama rd, pyrmont 2008
 ph: 02 9660 1200 fax: 02 9660 1233 e: dan@publicdesigngroup.com

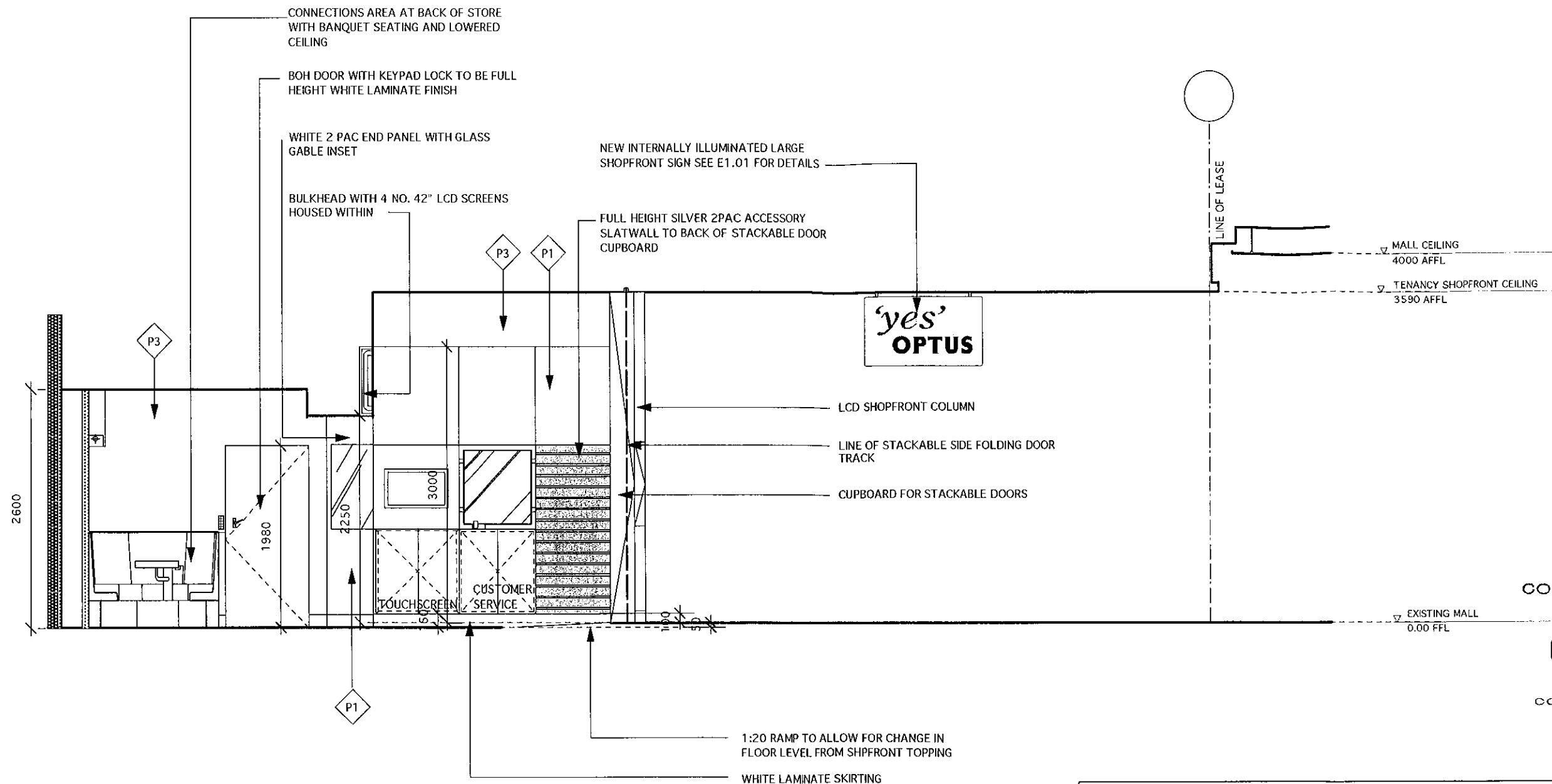
* copyright © public design group. this drawing is the property of public design group. design and copyright are reserved by them. the drawing is issued upon condition it is not copied, reproduced, retained or disclosed to any unauthorised person either wholly or in part without the prior consent in writing of public design group. all rights reserved.
 * do not scale this drawing. all dimensions to be verified on site prior to construction. any inconsistencies to be reported to public design group immediately. if in doubt please ask public design group for clarification.
 * any variation from these drawings requires written approval from public design group.
 * this drawing has been produced to illustrate design intent. all shop drawings are to be submitted to and sanctioned by public design group prior to manufacture or construction.
 * contractor to liaise with third party suppliers to confirm exact requirements.

client: OPTUS
 Yes Optus
 project: Shop 49 Stockland Balgowlah
 job number: OPTU-0160

drawing: REFLECTED CEILING PLAN
 drawn by: ZL checked by: DC
 client approval: XX issue: D

Issue	Notes	Date
D	AMENDED TO SUIT OA	16.04.09
C	seat flipped	14.04.09
B	ISSUE FOR APPROVAL	09.04.09
A	FIRST ISSUE	08.04.09





COMPLYING DEVELOPMENT
CERTIFICATE No.
09/2322-1
McKENZIE GROUP
CONSULTING (NSW) PTY LTD.
A.C.N. 093 211 988

ISSUE FOR APPROVAL

ELEVATION CC

SCALE 1:50

1.0
00

PAINT FINISHES LEGEND				
	MATERIAL	CODE / FINISH	LOCATION	SUPPLIER
P1	WHITE 2 PACK PAINT	WHITE TINTER SEMI GLOSS	BULKHEAD AND CUPBOARD FACES THROUGH OUT STORE	Dulux
P2	YELLOW 2 PACK PAINT TO MATCH OPTUS CORPORATE COLOURS	INGRAMS EXISTING SPEC HIGH GLOSS 2 PAC	TOP AND BOTTOM OF PERIMETER RECESS	Dulux
P3	WHITE LOW SHEEN PAINT	WHITE TINTER LOW SHEEN	CEILING @FRONT OF STORE FRONT SHOP FACING SIDE AND UNDERSIDE OF BULKHEADWALL ABOVE 3000MM	Dulux
P4	DARK GREY LOW SHEEN PAINT	LEADMAN PG1-H7 LOW SHEEN	INSIDE FACES OF CEILING TROUGH	Dulux
P5	MID TONE GREY LOW SHEEN PAINT	MENISCUS PG1-H1 LOW SHEEN	LOWER CEILING AT BACK OF STORE AND ON BACK WALL FACING BULKHEAD RETURN	Dulux

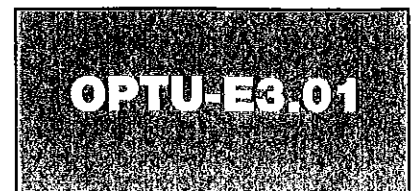


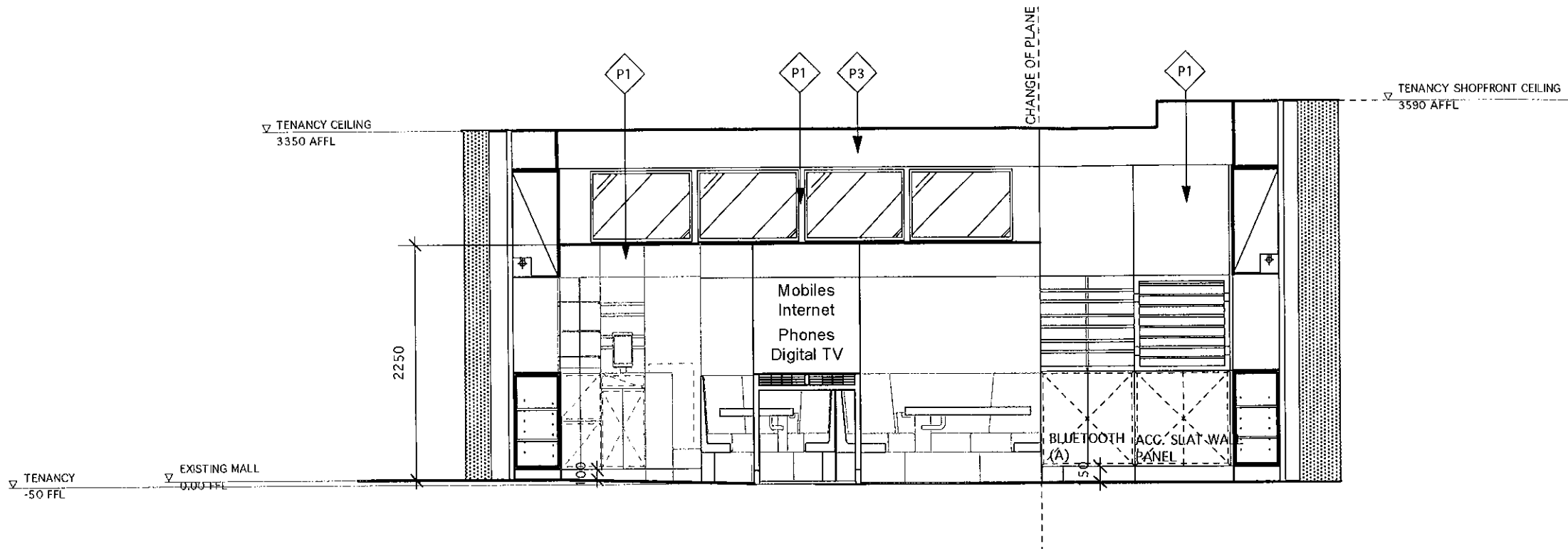
suite 107, Jones bay wharf, 26-32 parrama rd, pyrmont 2009
ph: 02 9660 1200 fax: 02 9660 1233 e: dan@publicdesigngroup.com

* copyright © public design group. this drawing is the property of public design group. design and copyright are reserved by them. the drawing is issued upon condition it is not copied, reproduced, retained or disclosed to any unauthorised person either wholly or in part without the prior consent in writing of public design group. all rights reserved.
* do not scale this drawing. all dimensions to be verified on site prior to construction. any inconsistencies to be reported to public design group immediately. if in doubt, please ask public design group for clarification.
* any variation from these drawings requires written approval from public design group.
* this drawing has been produced to illustrate design intent. all shop drawings are to be submitted to and sanctioned by public design group prior to manufacture or construction.
* contractor to liaise with third party suppliers to confirm exact requirements.

client: **OPTUS**
drawing: **ELEVATION- CC**
project: **YES OPTUS**
SHOP 49 Stocklands Balgowlah
drawn by: **ZL** checked by: **DC**
job number: **OPTU-0160**
client approval: **XX** issue: **B**

Issue	Notes	Date
B	ISSUE FOR APPROVAL	16.04.09
A	FIRST ISSUE	14.04.09





COMPLYING DEVELOPMENT
CERTIFICATE No

09/2322-1

McKENZIE GROUP
CONSULTING (NSW) PTY LTD
A.C.N. 093 211 998

ISSUE FOR APPROVAL

ELEVATION DD

1.0

00

SCALE 1:50

PAINT FINISHES LEGEND

	MATERIAL	CODE / FINISH	LOCATION	SUPPLIER
P1	WHITE 2 PACK PAINT	WHITE TINTER SEMI GLOSS	BULKHEAD AND CUPBOARD FACES THROUGH OUT STORE	Dulux
P2	YELLOW 2 PACK PAINT TO MATCH OPTUS CORPORATE COLOURS	INGRAMS EXISTING SPEC HIGH GLOSS 2 PAC	TOP AND BOTTOM OF PERIMETER RECESS	Dulux
P3	WHITE LOW SHEEN PAINT	WHITE TINTER LOW SHEEN	CEILING @FRONT OF STORE FRONT SHOP FACING SIDE AND UNDERSIDE OF BULKHEADWALL ABOVE 3000MM	Dulux
P4	DARK GREY LOW SHEEN PAINT	LEADMAN PG1-H7 LOW SHEEN	INSIDE FACES OF CEILING TROUGH	Dulux
P5	MID TONE GREY LOW SHEEN PAINT	MENISCUS PG1-H1 LOW SHEEN	LOWER CEILING AT BACK OF STORE AND ON BACK WALL FACING BULKHEAD RETURN	Dulux

public design group

suite 107, Jones bay wharf, 26-32 pirrama rd, pyrmont 2009
ph: 02 9660 1200 fax: 02 9660 1233 or dan@publicdesigngroup.com

* copyright © public design group. this drawing is the property of public design group. design and copyright are reserved by them. the drawing is issued upon condition it is not copied, reproduced, retained or disclosed to any unauthorised person either wholly or in part without the prior consent in writing of public design group. all rights reserved.
* do not scale this drawing. all dimensions to be verified on site prior to construction. any inconsistencies to be reported to public design group immediately. if in doubt please ask public design group for clarification.
* any variation from these drawings requires written approval from public design group.
* this drawing has been produced to illustrate design intent. all shop drawings are to be submitted to and sanctioned by public design group prior to manufacture or construction.
* contractor to liaise with third party suppliers to confirm exact requirements.

client: OPTUS

drawing: ELEVATION- DD

Issue

Notes

Date

YES OPTUS

project: SHOP 49 Stocklands Balgowlah

drawn by: ZL

checked by: DC

B

ISSUE FOR APPROVAL

16.04.09

A

FIRST ISSUE

14.04.09

job number: OPTU-0160

client approval: XX

issue: B

OPTU-E4.01