

400m TO NEWPORT SHOPPING VILLAGE

350m TO PUBLIC TRANSPORT

COOLING NORTH-EASTERLY WINDS



PROPOSED UPPER DECK

Note- Proposed stormwater will connect to the existing system which drains to the street

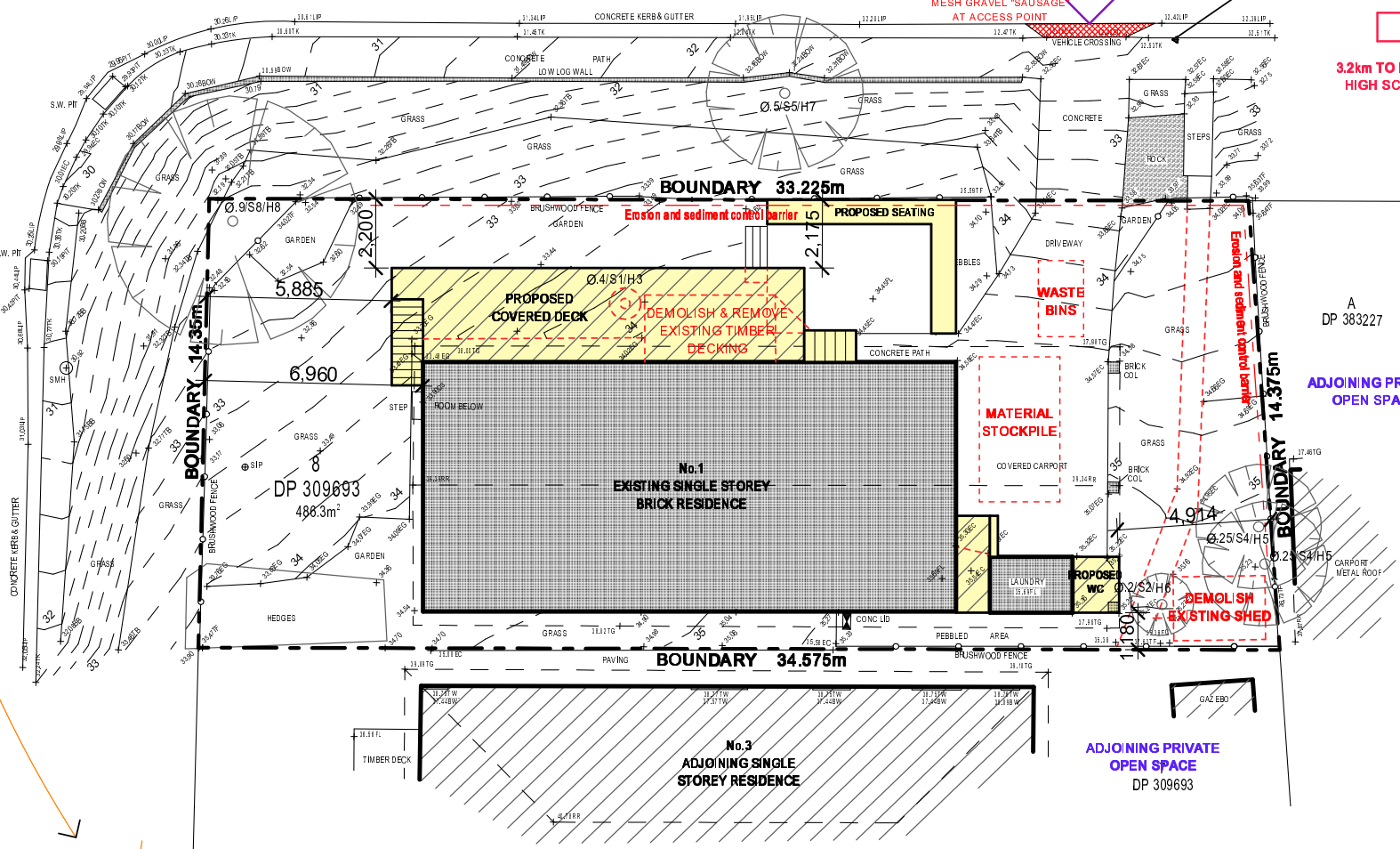
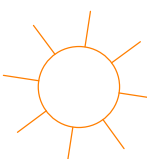
NULLABURRA ROAD

VEHICLE & PEDESTRIAN ENTRY POINT

1.3km TO PUBLIC PRIMARY SCHOOL

3.2km TO PUBLIC HIGH SCHOOL

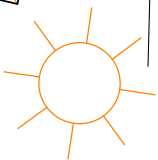
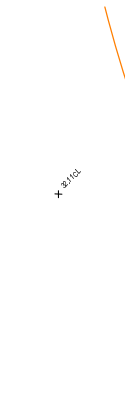
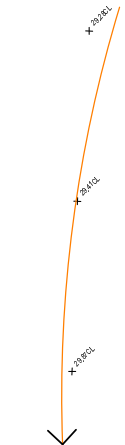
WALLUMATTA ROAD

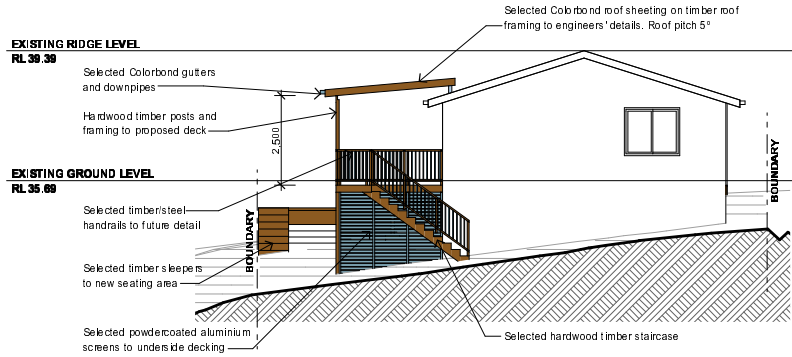


A DP 383227

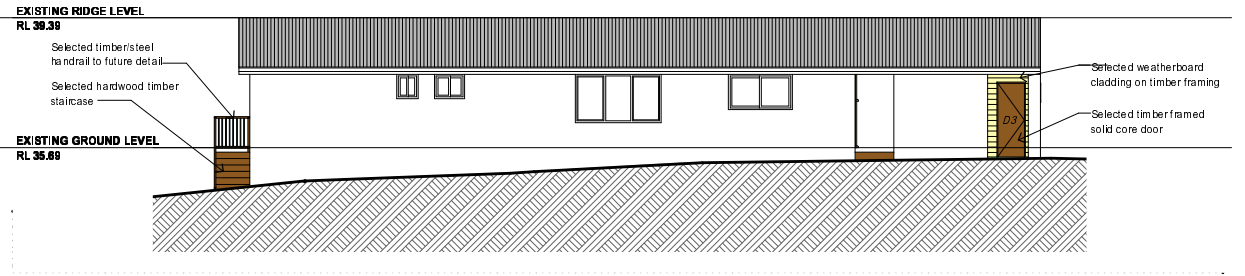
ADJOINING PRIVATE OPEN SPACE

ADJOINING PRIVATE OPEN SPACE DP 309693

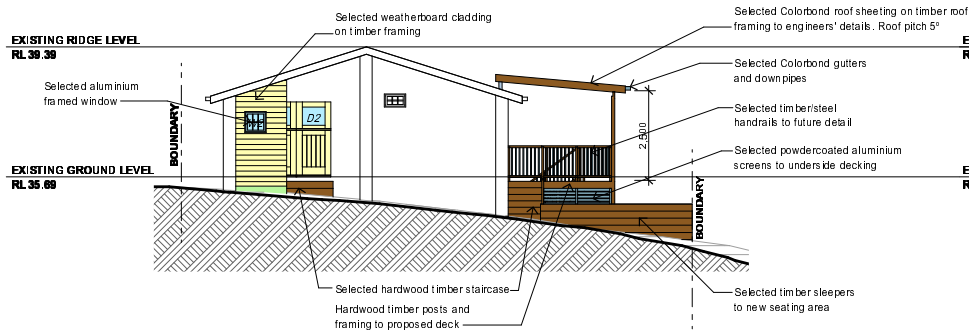




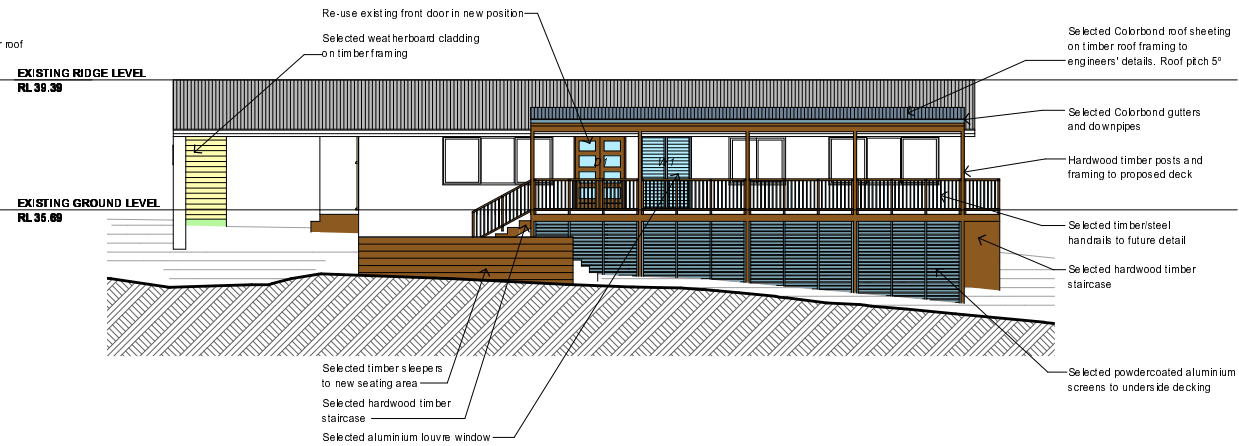
1 NORTH ELEVATION 1:100



2 WEST ELEVATION 1:100



3 SOUTH ELEVATION 1:100



4 EAST ELEVATION 1:100