

1 Site Plan (Roof) Notification  
1:1000

- COMPLY WITH RELEVANT AUTHORITIES REQUIREMENTS
- COMPLY WITH THE BUILDING CODE OF AUSTRALIA
- COMPLY WITH ALL RELEVANT AUSTRALIAN STANDARDS
- DIMENSIONS IN MILLIMETRES
- USE FIGURES DIMENSIONS ONLY
- DO NOT SCALE
- IF DISCREPANCY EXISTS NOTIFY ARCHITECT
- COS - CONFIRM ON SITE
- IF IN DOUBT ASK

**LEGEND**

<b>AD</b>	ALUMINIUM DOOR	<b>FG</b>	FIXED GLASS
<b>AW</b>	ALUMINIUM WINDOW	<b>FR</b>	FRIEDGE
<b>BG</b>	BOX GUTTER	<b>FW</b>	FLOOR WASTE
<b>BK</b>	BRICK	<b>GBK</b>	GLAZED BRICK
<b>BT</b>	STEEL BALLUSTRADE	<b>GBS</b>	GLAZED BRICK SCREEN
<b>BW</b>	BLOCKWORK	<b>JU</b>	JOINERY UNIT
<b>EX-FL</b>	EXISTING FLOORING	<b>LO</b>	EXTERNAL LOUVRES - RETRACTABLE
<b>CONC</b>	CONCRETE	<b>MAT</b>	ENTRY MAT
<b>CPT</b>	CARPET	<b>MC</b>	METAL CLADDING
<b>CT</b>	CERAMIC TILE	<b>MR</b>	METAL ROOFING
<b>DP</b>	DOWNPIPE	<b>PM</b>	PERFORATED METAL
<b>EXT</b>	EXISTING	<b>RF</b>	RUBBER FLOORING

**RWO**  
**SC**  
**TD**  
**TW**

RWO	RAINWATER OUTLET
SC	STEEL COLUMN
TD	TIMBER DOOR JOINERY
TW	TIMBER WINDOW JOINERY

**LEGEND**

	EXISTING ELEMENTS TO BE RETAINED
	EXISTING ELEMENTS TO BE DEMOLISHED
	PROPOSED NEW WORKS

CAD File: 1801\_PIT\_STAGE 01

ISSUE	DATE	REVISION
01	31/10/19	DA Issue

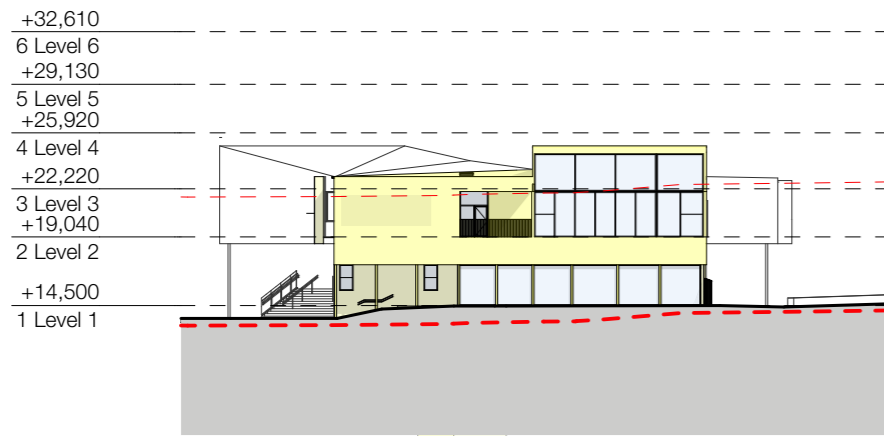
**DRAWN BY KH**    **CHECKED BY KH**  
IF ISSUE IS INITIALED AS CHECKED DRAWING CAN BE CONSIDERED APPROVED UNDER NMA QUALITY MANAGEMENT SYSTEM

**The Pittwater House Schools**  
70 South Creek Rd, Collaroy NSW 2097  
FOR **The Pittwater House Schools**

**NEESON MURCUTT ARCHITECTS PTY LTD**  
L2 9 ROSLYN ST. POTTS POINT 2011 T. 8297 3590 F. 8297 3510  
NOMINATED ARCHITECT: RACHEL NEESON No. 6692

NO	REV	TITLE	PHASE	SCALE	DATE
DA 12.1	01	NOTIFICATION PLAN	DA	1:1000 @A3	5/2/20

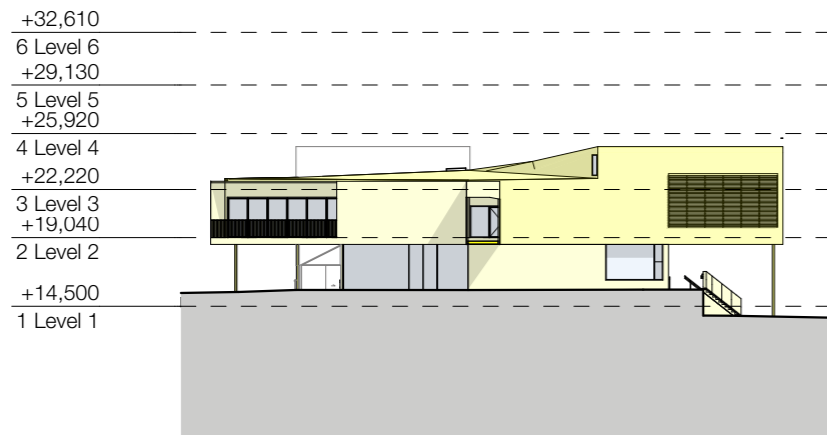
Copyright in all documents and drawings prepared by NEESON MURCUTT ARCHITECTS and in any works executed from those documents and drawings shall remain the property of, or on creation vest in NEESON MURCUTT ARCHITECTS, Pty Ltd ©



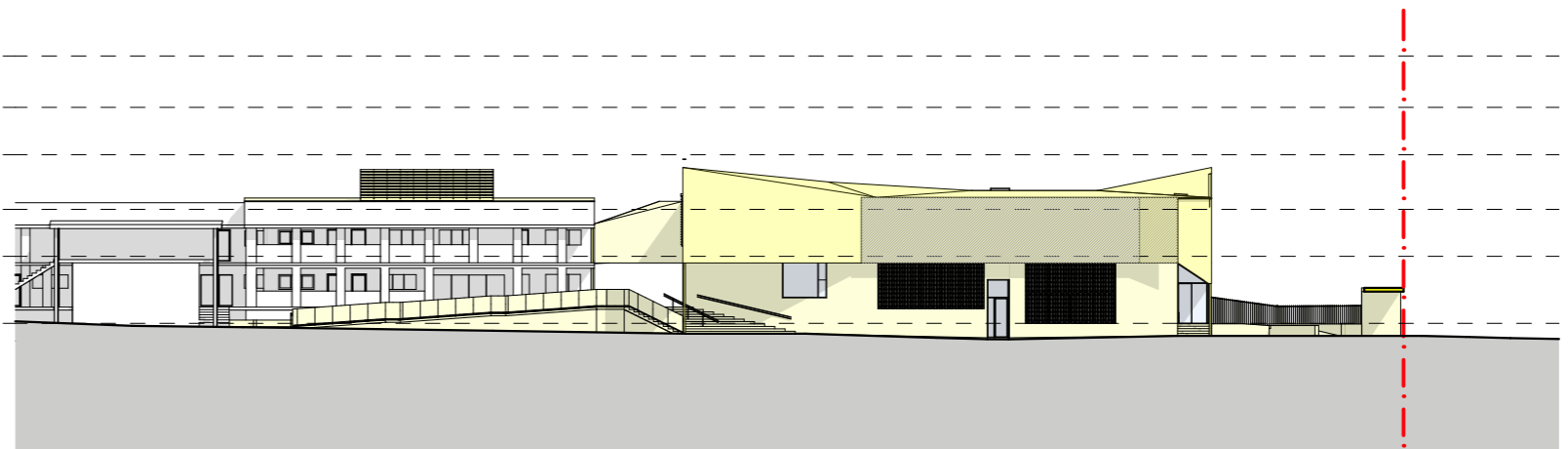
3 South Notification  
1:500



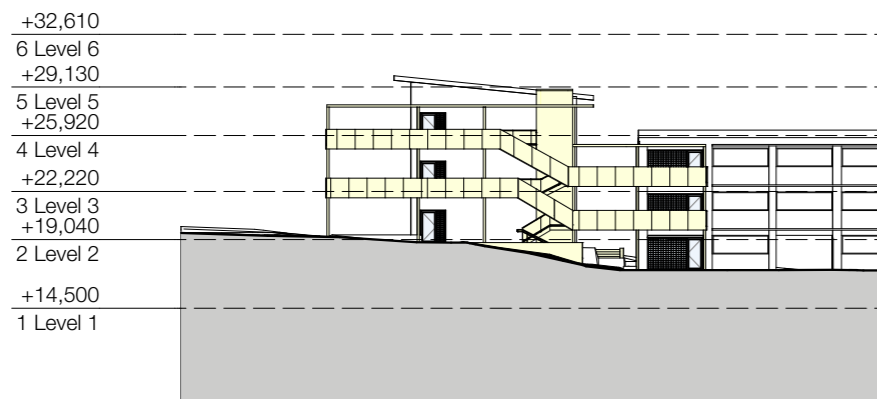
2 East Notification  
1:500



1 North Notification  
1:500



4 West Notification  
1:500



5 Section 3 Notification  
1:500

- COMPLY WITH RELEVANT AUTHORITIES REQUIREMENTS
- COMPLY WITH THE BUILDING CODE OF AUSTRALIA
- COMPLY WITH ALL RELEVANT AUSTRALIAN STANDARDS
- DIMENSIONS IN MILLIMETRES
- USE FIGURES DIMENSIONS ONLY
- DO NOT SCALE
- IF DISCREPANCY EXISTS NOTIFY ARCHITECT
- COS - CONFIRM ON SITE
- IF IN DOUBT ASK

LEGEND

<b>AD</b> ALUMINIUM DOOR	<b>FG</b> FIXED GLASS	<b>RWO</b> RAINWATER OUTLET
<b>AW</b> ALUMINIUM WINDOW	<b>FR</b> FRIDGE	<b>SC</b> STEEL COLUMN
<b>BG</b> BOX GUTTER	<b>FW</b> FLOOR WASTE	<b>TD</b> TIMBER DOOR JOINERY
<b>BK</b> BRICK	<b>GBK</b> GLAZED BRICK	<b>TW</b> TIMBER WINDOW JOINERY
<b>BT</b> STEEL BALUSTRADE	<b>GBS</b> GLAZED BRICK SCREEN	
<b>BW</b> BLOCKWORK	<b>JU</b> JOINERY UNIT	
<b>EX-FL</b> EXISTING FLOORING	<b>LO</b> EXTERNAL LOUVRES - RETRACTABLE	
<b>CONC</b> CONCRETE	<b>MAT</b> ENTRY MAT	
<b>CPT</b> CARPET	<b>MC</b> METAL CLADDING	
<b>CT</b> CERAMIC TILE	<b>MR</b> METAL ROOFING	
<b>DP</b> DOWNPIPE	<b>PM</b> PERFORATED METAL	
<b>EXT</b> EXISTING	<b>RF</b> RUBBER FLOORING	

LEGEND

EXISTING ELEMENTS TO BE RETAINED
EXISTING ELEMENTS TO BE DEMOLISHED
PROPOSED NEW WORKS

CAD File: 1801\_PITT\_STAGE 01

ISSUE DATE REVISION

01	31/10/19	DA Issue
----	----------	----------

DRAWN BY KH CHECKED BY KH  
IF ISSUE IS INITIALED AS CHECKED DRAWING CAN BE CONSIDERED APPROVED UNDER NMA QUALITY MANAGEMENT SYSTEM

The Pittwater House Schools  
70 South Creek Rd, Collaroy NSW 2097  
FOR The Pittwater House Schools

NEESON MURCUTT ARCHITECTS PTY LTD  
L2 9 ROSLYN ST. POTTS POINT 2011 T. 8297 3590 F. 8297 3510  
NOMINATED ARCHITECT: RACHEL NEESON No. 6692

NO	REV	TITLE	PHASE	SCALE	DATE
DA 12.2	01	NOTIFICATION PLAN	DA	1:500 @A3	5/2/20

Copyright in all documents and drawings prepared by NEESON MURCUTT ARCHITECTS and in any works executed from those documents and drawings shall remain the property of, or on creation vest in NEESON MURCUTT ARCHITECTS. Pty Ltd ©