

LEGEND

SITE BOUNDARY

EXISTING TREE TO BE RETAINED AND PROTECTED
Refer to arborists report for tree protection requirements. TPZ and SRZ shown. Arborist root mapping to be completed for all trees adjacent to site prior to initiating construction. Refer to arborist report for additional information and protection measures.

TREE NOMINATED FOR REMOVAL
Refer to arborists report for additional information.

HARD ELEMENTS

PAVING TYPE 1
Permeable unit pavers
Colour: TBC

PAVING TYPE 2
Mixed sized round stepping stones with ground covers surrounding

WALL TYPE 1
Proposed seating wall to create seating nook - material to match architectural elements

TRELLIS TYPE 1
Trellis fixed to fence for climbers

SOFT ELEMENTS

SHRUB BED TYPE 1
Planting in natural ground.
Mulch: 20mm grade tan bark mulch

TURF
Type: Soft Leaf Buffalo

PROPOSED DECIDUOUS TREE

PROPOSED EVERGREEN TREE

PROPOSED SHRUBS AND ACCENT PLANTS

PROPOSED GROUNDCOVER/ MASS PLANTING

Notes:
- Mature height and width of planting dependent upon site conditions, aspect and water requirements.
- All gardens and turf should be adequately irrigated.
- All areas and extents to be confirmed and checked on site prior to initiating construction.
- Refer to engineering drawings and architectural plans for drainage details, retaining wall details, heights and dimensions of outdoor spaces
- Refer to S01.2 for planter box/green roof plantings species.

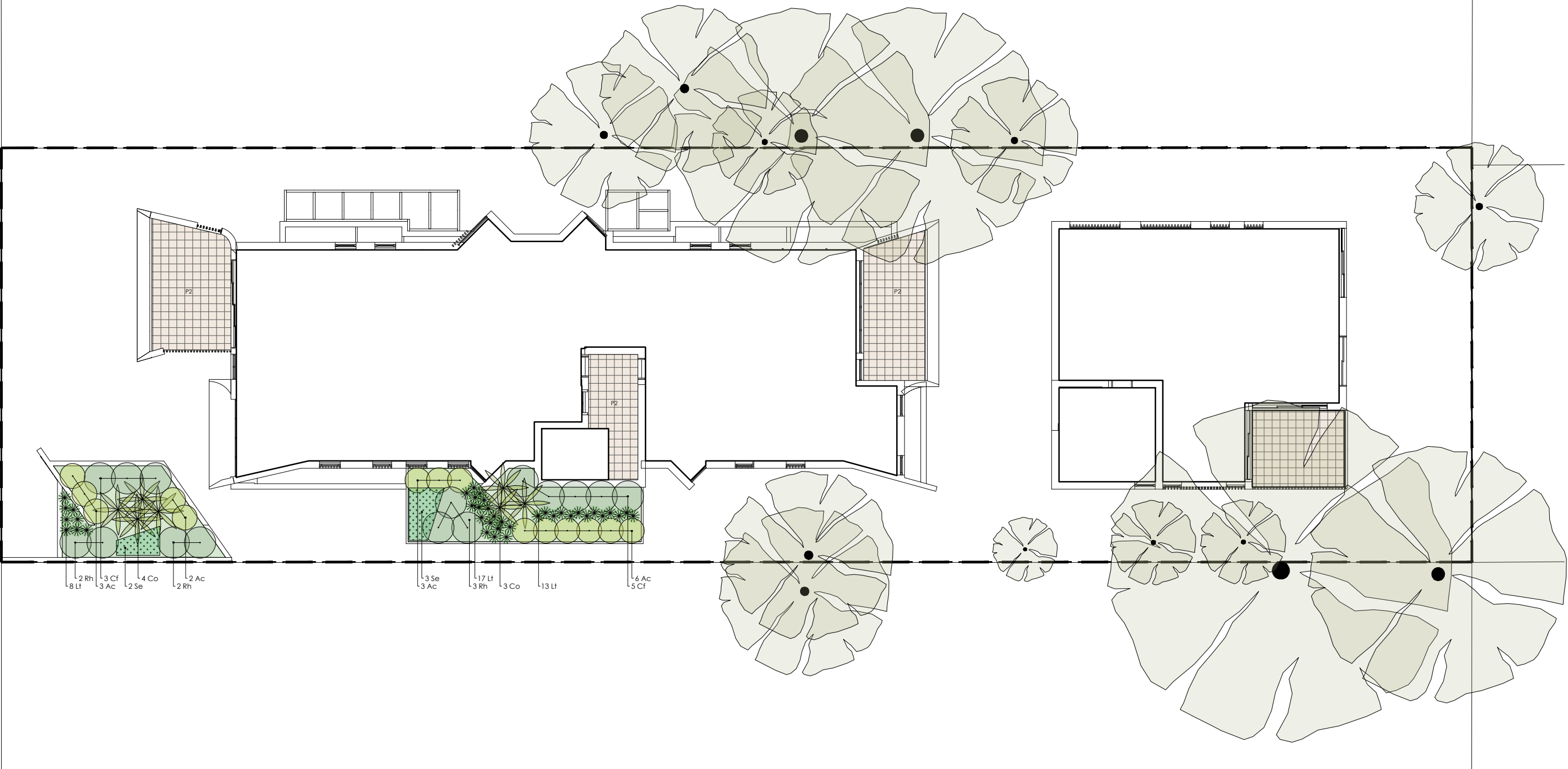
PLANTING TABLE

Code	Botanical Name	Common Name	Height (m)	Width (m)	Density	Pot Size	No
Trees							
Eb	<i>Eucalyptus botryoides</i> *	Bangalay	30m	12m	A s Shown	45L	1
At	<i>Acacia longifolia</i> *	Sydney Wattle	6m	3m	A s Shown	200mm spring ring	16
Be	<i>Banksia ericifolia</i> *	Banksia	4m	2m	A s Shown	300mm	5
Bi	<i>Banksia integrifolia</i> *	Coastal Banksia	8m	4m	A s Shown	45L	7
Me	<i>Metaleuca linearifolia</i> *	Snow in Summer	8m	5m	A s Shown	300mm	10
Shrubs							
Ac	<i>Acacia cognata</i> 'Umelight'	Bower Wattle	1m	1m	A s Shown	140mm	9
Ba	<i>Banksia spinulosa</i> 'Birthday Candles'	Banksia	0.6m	0.6m	A s Shown	140mm	40
Bl	<i>Blechnum</i> 'Silver Lady'	Dwarf Tree Fern	1.7m	1m	0.6mC	140mm	9
Cr	<i>Corea glabra</i> 'Winter Glow'	Corea	0.6m	0.6m	A s Shown	140mm	27
Cs	<i>Callistemon citrinus</i> 'Endeavour' *	Bottle Brush	3m	2m	A s Shown	200mm	10
Ce	<i>Ceratopetalum gummiferum</i> *	NSW Christmas Bush	4m	2.5m	A s Shown	140mm	3
Le	<i>Leptospermum laevigatum</i> *	Coastal Tea Tree	4m	2m	1.2mC	140mm	16
Sy	<i>Syzygium australe</i> 'Resilience'	Lily Ply	4m	1.5m	1.2mC	200mm	123
Climbers							
Fc	<i>Ficus pumila</i>	Climbing Fig	3m	0.2m	1m C	140mm	9
Flaxes / Grasses							
Dc	<i>Dianella caerulea</i> *	Blue Flax Lily	0.7m	0.7m	A s Shown	140mm	101
Fi	<i>Ficinia nodosa</i> *	Knobbly Club Rush	0.5m	0.5m	A s Shown	140mm	35
Lt	<i>Lomandra longifolia</i> 'Tanika' *	Matt Rush	0.6m	0.6m	A s Shown	140mm	61
Accent Plants							
Co	<i>Cordyline australis</i> 'Fantasy'	Cabbage Palm	2m	1m	A s Shown	200mm	67
Di	<i>Dicksonia antarctica</i>	Tree Fern	1.5m	2m	A s Shown	1200mm trunk min.	16
Xa	<i>Xanthorrhoea johnsonii</i> *	Grass Tree	2m	1m	A s Shown	200mm	18
Groundcovers							
Hi	<i>Hibbertia scandens</i> *	Golden Guinea Flower	0.3m	3m	1/m ²	Tube	42
Mg - Mixed Groundcovers - Total of 296 plants (4/m²) ^							
	<i>Scavola ramosissima</i> *	Fan-flower	0.2m	2m	4/m ²	140mm	98
	<i>Dichondra repens</i> *	Kidney Weed	0.2m	0.4m	4/m ²	Tube	98
	<i>Viola hederacea</i> *	Native Violets	0.2m	0.3m	4/m ²	Tube	99

Notes
Contractor to confirm numbers on site prior to ordering planting stock.
^ Plants to be installed in groups of three and alternated with other nominated species.
* Denotes local species (100% of tree species and 66% of all plant species)
67% of all plants are local species.

NOTE: CONTRACTOR TO CONFIRM LOCATION OF ALL SERVICES AND INFRASTRUCTURE PRIOR TO INITIATING LANDSCAPE WORKS.

	ISSUE	REASON FOR ISSUE	DATE	DESIGN	CHECKED	CLIENT LAXDTX 2 Pty Ltd	CONSULTANT 	CONTACT DETAILS PRIMARY CONTACT: PHOEBE GORDON EMAIL: phoebeg@plotdesigngroup.com.au PHONE: 0422 917 937 ABN: 19629570396	ASSOCIATED CONSULTANTS ARCHITECT: Walsh Architects	PROJECT 32 Golf Avenue Mona Vale NSW	DRAWING LANDSCAPE PLAN (GROUND LEVEL) - SHEET 1	SCALE 	
	A	Draft for client review	09.04.2025	ZK	PG								
	B	For Approval	22.04.2025	ZK	PG								
											PROJECT No 25-576	DRAWING No. LS501.1	ISSUE B



PLANTING IMAGERY



Acacia cognata 'Limelight'



Casuarina glauca 'Cousin It'



Rhagodia spinescens 'Aussie Flat Bush'



Cordyline australis 'Fantasy'



Lomandra longifolia 'Tanika'



Senecio repens 'Chalksticks'

PLANTING TABLE

Code	Botanical Name	Common Name	Height (m)	Width (m)	Density	Pot Size	No
Shrubs							
Ac	Acacia cognata 'Limelight'	Bower Wattle	1m	1m	As Shown	140mm	14
Cf	Casuarina glauca	Cousin it Casuarina	0.1m	1m	As Shown	140mm	8
Rh	Rhagodia spinescens 'Aussie Flat Bush'	Aussie Flat Bush	0.4m	1m	As Shown	140mm	7
Accent Plants							
Co	Cordyline australis 'Fantasy'	Cabbage Palm	2m	1m	As Shown	200mm	7
Flaxes / Grasses							
Lt	Lomandra longifolia 'Tanika'	Matt Rush	0.6m	0.6m	As Shown	140mm	38
Groundcovers							
Se	Senecio repens	Blue Chalksticks	0.3m	0.6m	1/m²	140mm	5

Notes
Contractor to confirm numbers on site prior to ordering planting stock.

NOTE: CONTRACTOR TO CONFIRM LOCATION OF ALL SERVICES AND INFRASTRUCTURE PRIOR TO INITIATING LANDSCAPE WORKS.

ISSUE	REASON FOR ISSUE	DATE	DESIGN	CHECKED
A	Draft for client review	09.04.2025	ZK	PG
B	For Approval	22.04.2025	ZK	PG

CLIENT

LAXDTX 2 Pty Ltd

CONSULTANT

PLOT

DESIGN GROUP

CONTACT DETAILS

PRIMARY CONTACT: PHOEBE GORDON

EMAIL: phoebeg@plotdesigngroup.com.au

PHONE: 0422 917 937

ABN: 19629570396

ASSOCIATED CONSULTANTS

ARCHITECT: Walsh Architects

PROJECT

32 Golf Avenue

Mona Vale NSW

DRAWING

LANDSCAPE PLAN (PLANTERS) - SHEET 2

PROJECT No

25-576

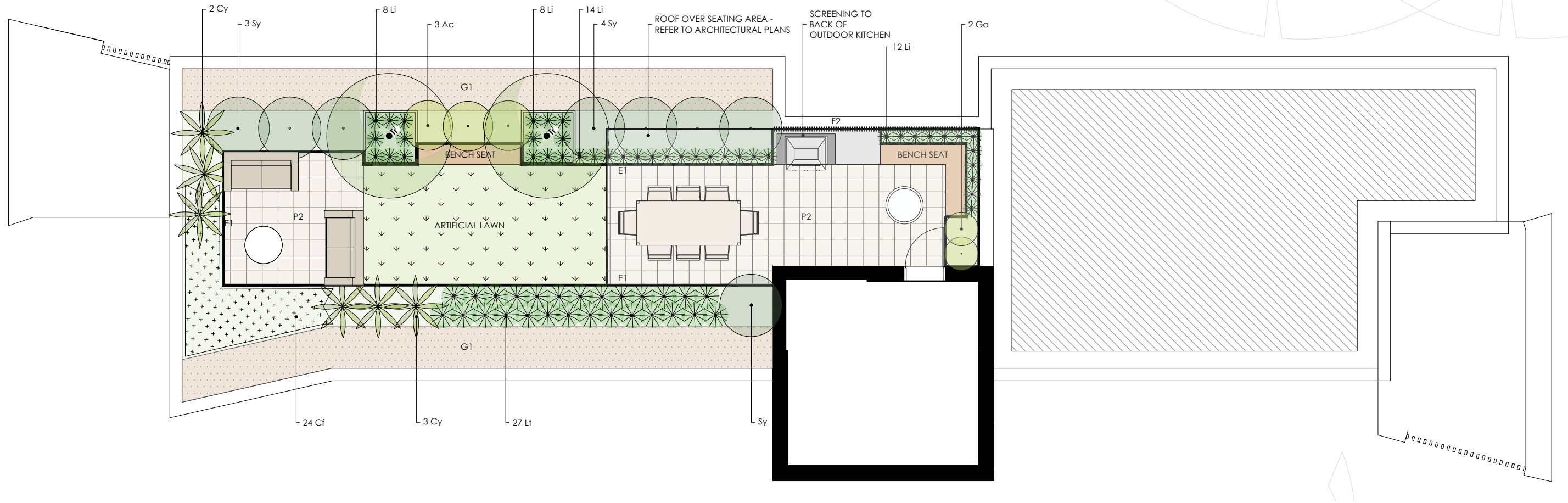
DRAWING No.

LS501.2

ISSUE

B

SCALE



PLANTING TABLE

Code	Botanical Name	Common Name	Height (m)	Width (m)	Density	Pot Size	No
Trees							
Tr	<i>Tristaniopsis laurina</i> 'Luscious'	Water Gum	5m	3m	As Shown	300mm	2
Shrubs							
Ac	<i>Acacia cognata</i> 'Limelight'	Bower Wattle	1m	1m	0.9mC	140mm	3
Ga	<i>Gardenia florida</i>	Gardenia	0.8m	0.8m	0.6m C	140mm	2
Sy	<i>Syzygium australe</i> 'Resilience'	Lily Pili	4m	1.5m	1.2mC	200mm	8
Accent Plants							
Cy	<i>Cycad revoluta</i>	Sago Palm	2m	1.5m	As Shown	200mm	6
Flaxes / Grasses							
Li	<i>Liriope muscari</i> 'Just Right'	Lily Turf	0.4m	0.4m	0.3m C	140mm	42
Lt	<i>Lomandra longifolia</i> 'Tanika'	Matt Rush	0.6m	0.6m	0.5mC	140mm	27
Groundcovers							
Cf	<i>Casuarina glauca</i>	Cousin it Casuarina	0.1m	1m	4/m²	140mm	24

Notes
Contractor to confirm numbers on site prior to ordering planting stock.

PLANTING IMAGERY



Tristaniopsis laurina 'Luscious' (in pot)

Acacia cognata 'Limelight'

Gardenia florida

Syzygium 'Resilience'


Cycas revoluta

Liriope muscari 'Just Right'

Lomandra longifolia 'Tanika'

Casuarina glauca 'Cousin It'

LEGEND

 SITE BOUNDARY

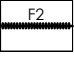
HARD ELEMENTS

 PAVING TYPE 1
Unit pavers - colour to match balcony tiling

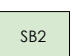
 GRAVEL TYPE 1
Gravel ballast to roof - refer to architectural plans for details

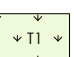
 EDGING TYPE 1
Proposed planter box

 PLANTER BOX TYPE 1
Refer to architectural and engineers plans for details

 FENCE TYPE 2
Timber batten screening.
Height: 1800mm

SOFT ELEMENTS

 SHRUB BED TYPE 2
Planter box - refer to architectural plans

 TURF
Type: Artificial Lawn

 PROPOSED TREES

 PROPOSED SHRUBS AND ACCENT PLANTS

 PROPOSED GROUNDCOVER/ MASS PLANTING

Notes:
- Mature height and width of planting dependent upon site conditions, aspect and water requirements.
- All gardens and turf should be adequately irrigated.
- All areas and extents to be confirmed and checked on site prior to initiating construction.
- Refer to engineering drawings and architectural plans for retaining wall details, water proofing, heights and dimensions of outdoor spaces. Pools by others.
- Refer to architectural plans for tree management requirements.

NOTE: CONTRACTOR TO CONFIRM LOCATION OF ALL SERVICES AND INFRASTRUCTURE PRIOR TO INITIATING LANDSCAPE WORKS.



ISSUE	REASON FOR ISSUE	DATE	DESIGN	CHECKED
A	Draft for client review	09.04.2025	ZK	PG
B	For Approval	22.04.2025	ZK	PG

CLIENT
LAXDTX 2 Pty Ltd

CONSULTANT
PLOT
DESIGN GROUP

CONTACT DETAILS
PRIMARY CONTACT: PHOEBE GORDON
EMAIL: phoebeg@plotdesigngroup.com.au
PHONE: 0422 917 937
ABN: 19629570396

ASSOCIATED CONSULTANTS
ARCHITECT: Walsh Architects

PROJECT
32 Golf Avenue
Mona Vale NSW

DRAWING
LANDSCAPE PLAN (ROOF PLAN) - SHEET 3

PROJECT No
25-576

DRAWING No.
LS501.3

ISSUE
B

SCALE
1:50
A1 1:50 A3 1:100

