

## **PRELIMINARY GEOTECHNICAL ASSESSMENT:**

### **81 Prahran Avenue, Davidson**

<b>1.0</b>	<b>LANDSLIP RISK CLASS</b> (Highlight indicates Landslip Risk Class of property)
<input type="checkbox"/>	A - Geotechnical Report not normally required
<input checked="" type="checkbox"/>	B - Geotechnical Engineer (Under Council Guidelines) to decide if Geotechnical Report is required
<input type="checkbox"/>	C - Geotechnical Report is required
<input type="checkbox"/>	D - Geotechnical Engineer (Under Council Guidelines) to decide if Geotechnical Report is required
<input type="checkbox"/>	E - Geotechnical Report required

## **2.0 Proposed Development**

- 2.1** Construct a new deck on the downhill side of the house.
- 2.2** Apart from those for footings, no excavations are required. No fills are shown on the plans.
- 2.3** Details of the proposed development are shown on 8 drawings prepared by Jessica West, drawings numbered 05 and 07 to 13, Issue A, dated 11/5/21.

## **3.0 Site Location**

- 3.1** The site was inspected on the 20<sup>th</sup> May, 2021.
- 3.2** This residential property is on the low side of the road and has a SW aspect. It is located on the gently graded upper middle reaches of a hillslope. Medium Strength Hawkesbury Sandstone bedrock outcrops on the E side of the property. Where sandstone is not exposed, it is expected to underlie the surface at relatively shallow depths. The natural surface of the block has been altered with excavations for a parking area on the uphill side of the property, a patio area on the E side of the

property, and for a pool on the downhill side of the property. The proposed development will not alter the surface further for the proposed works.

**3.3** The site shows no indications of historical movement in the natural surface that could have occurred since the property was developed. We are aware of no history of instability on the property.

#### **4.0 Site Description**

The natural slope falls across the site at an average angle of  $\sim 6^\circ$ . At the road frontage, a concrete driveway runs to a garage on the ground floor of the house and to a brick-paved parking area between the road frontage and the house. The cut for the parking area is supported by a stable  $\sim 0.8\text{m}$  high brick retaining wall. The two-storey brick house is supported on brick walls. The supporting walls display no significant signs of movement. An excavation has been made in the slope on the E side of the property for a patio area. The cut is supported by a stable  $\sim 1.5\text{m}$  high brick retaining wall. The wall was observed to be supported directly onto outcropping Medium Strength Sandstone. A pool has been cut into the slope in the SE corner of the property. The water level of the pool indicates no ground movement has occurred in the shell of the pool since its construction. The area surrounding the house and driveway is mostly garden-covered or paved with some lawn areas. No signs of movement associated with slope instability were observed on the grounds. The adjoining neighbouring properties were observed to be in good order as seen from the road and the subject property.

#### **5.0 Recommendations**

The proposed development and site conditions were considered and applied to the Council Flow Chart.

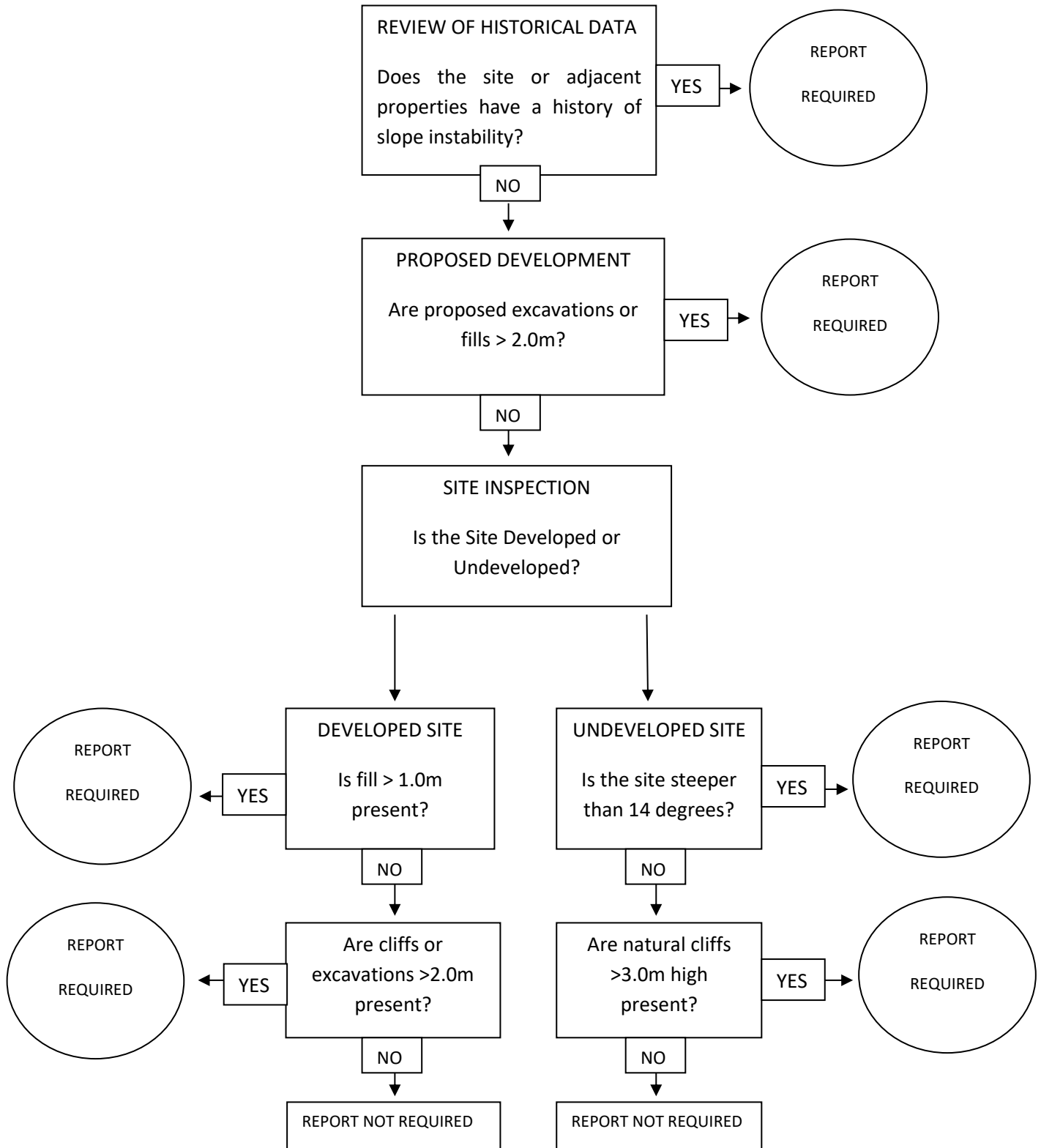
Provided good engineering and building practice are followed, no further Geotechnical assessment is recommended for the proposed development.

White Geotechnical Group Pty Ltd.



Ben White M.Sc. Geol.,  
AusIMM., CP GEOL.  
No. 222757  
Engineering Geologist.

**Preliminary Assessment Flow Chart – Northern Beaches Council (Warringah)**



## Information about your Preliminary Assessment

This Preliminary Assessment relies on visual observations of the surface features observed during the site inspection. Where reference is made to subsurface features (e.g., the depth to rock) these are interpretations based on the surface features present and previous experience in the area. No ground testing was conducted as part of this assessment and it is possible subsurface conditions will vary from those interpreted in the assessment.

In some cases, we will recommend no further geotechnical assessment is necessary despite the presence of existing fill or a rock face on the property that exceed the heights that would normally trigger a full geotechnical report, according to the Preliminary Assessment Flow Chart. Where this is the case, if it is an existing fill, it is either supported by a retaining wall that we consider stable, or is battered at a stable angle and situated in a suitable position on the slope. If it is a rock face that exceeds the flow chart limit height, the face has been deemed to be competent rock that is considered stable. These judgements are backed by the inspection of over 5000 properties on Geotechnical related matters.

The proposed excavation heights referred to in section 2.0 of this assessment are estimated by review of the plans we have been given for the job. Although we make every reasonable effort to provide accurate information excavation heights should be checked by the owner or person lodging the DA. If the excavation heights referred to in in section 2.0 of this assessment are incorrect, we are to be informed immediately and before this assessment is lodged with the DA.

---