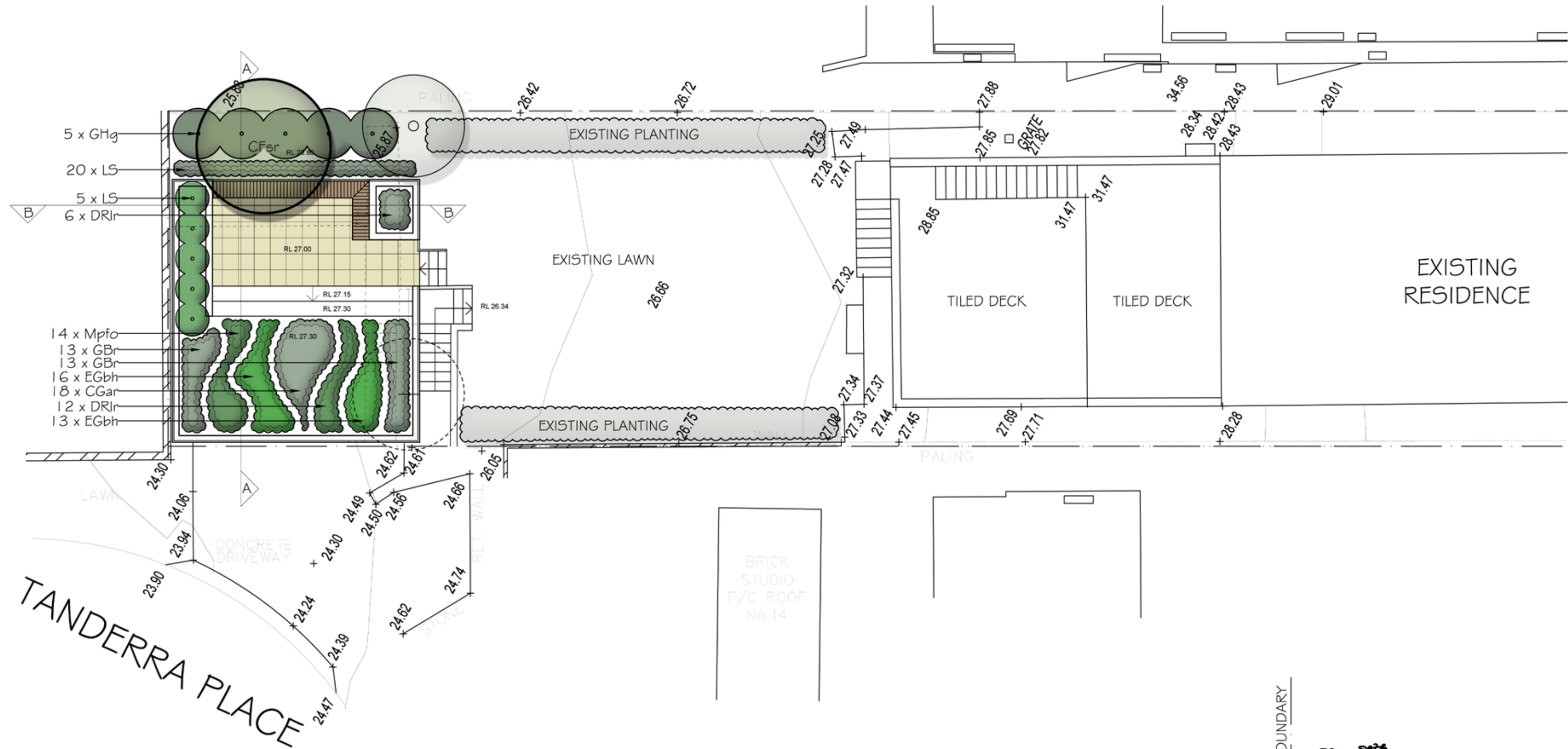


LEGEND

- + 55.28

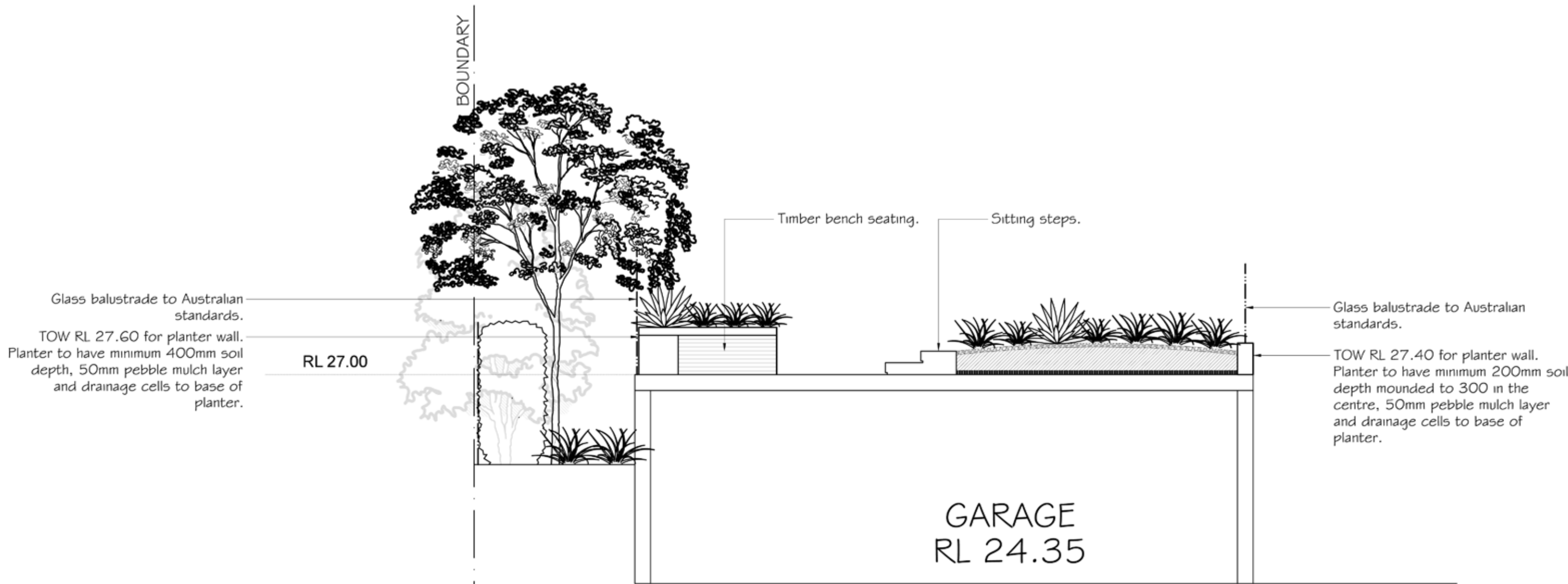
EXISTING LEVELS
- + 65.20

PROPOSED LANDSCAPE LEVELS
- EXISTING TREES TO BE RETAINED
- EXISTING TREES TO BE REMOVED
- PROPOSED SMALL SHRUBS/LARGE GRASSES
- MASS PLANTING OF NATIVE GRASSES/GROUNDCOVERS
- UNIT PAVING TO FUTURE SELECTION



SCHEDULE OF PLANT MATERIAL

CODE	BOTANICAL NAME	COMMON NAME	QUANTITY	MATURE HEIGHT	CONTAINER SIZE	STAKES
CFsr	<i>Corymbia ficifolia</i> 'Summer Red'	Summer Red	1	4m	25 litre	2
CGar	<i>Carpobrotus glaucescens</i> 'Aussie Rambler'	Pig Face	18	0.3m	140mm	-
DRlr	<i>Dianella revoluta</i> 'Little Rev'	Little Rev Dianella	18	0.3m	140mm	-
EGbh	<i>Eremophila glabra</i> 'Blue Hoizon'	Blue Horizon Eremophila	29	0.25m	140mm	-
GBr	<i>Grevillea</i> 'Bronze Rambler'	Bronze Rambler	26	0.3m	140mm	-
GHg	<i>Grevillea</i> 'Honey Gem'	Honey Gem	5	5m	200mm	-
LS	<i>Lomandra</i> 'Seascape'	Seascape Lomandra	25	0.4m	140mm	-
Mpfo	<i>Mesembryanthemum</i> 'Pig Face Orange'	Pig Face Orange	14	0.3m	140mm	-



Verify all dimensions on site before commencing construction or ordering materials. Verify the dimensions of all manufactured products before installation. Use figured dimensions in preference to scaled dimensions. Report any discrepancies to the Landscape Architect for a decision before work commences.

NOTES

This plan is to be read in conjunction with all documentation prepared by Peter Princi Architects.



office. 16/303 pacific highway  
lindfield nsw 2070  
postal. 25 bent street  
lindfield nsw 2070  
ph 9416 4290 fax 9416 4735  
A.C.N 097 328 580  
email ija@netspace.net.au

project

Alterations & Additions

28 Gardere Avenue,  
Curl Curl

drawing

Landscape Plan

client

C. Perkins & S. Paterson

date

November 2021

job.dwg no.

173.21/431

designed by

IJ

scale

1:100 @ A1

1:200 @ A3

no. in set

ONE/ONE

drawn by

AM



Corymbia ficifolia 'Summer Red'



Grevillea 'Honey Gem'



Grevillea 'Bronze Rambler'



Carpobrotus glaucescens 'Aussie Rambler'



Mesembryanthemum 'Pig Face Orange'



Eremophila glabra prostrate 'Blue Hoizon'



Lomandra 'Seascape'



Dianella 'Little Rev'

1 SECTION A-A  
SCALE 1:50

2 SECTION B-B  
SCALE 1:50

