

PLANTING IMAGERY



Acacia cognata 'Limelight'



Casuarina glauca 'Cousin It'



Rhagodia spinescens 'Aussie Flat Bush'



Cordyline australis 'Fantasy'



Lomandra longifolia 'Tanika'



Senecio repens 'Chalksticks'

PLANTING TABLE

Code	Botanical Name	Common Name	Height (m)	Width (m)	Density	Pot Size	No
Shrubs							
Ac	Acacia cognata 'Limelight'	Bower Wattle	1m	1m	As Shown	140mm	14
Cf	Casuarina glauca	Cousin it Casuarina	0.1m	1m	As Shown	140mm	8
Rh	Rhagodia spinescens 'Aussie Flat Bush'	Aussie Flat Bush	0.4m	1m	As Shown	140mm	7
Accent Plants							
Co	Cordyline australis 'Fantasy'	Cabbage Palm	2m	1m	As Shown	200mm	7
Flaxes / Grasses							
Lt	Lomandra longifolia 'Tanika'	Matt Rush	0.6m	0.6m	As Shown	140mm	38
Groundcovers							
Se	Senecio repens	Blue Chalksticks	0.3m	0.6m	1/m²	140mm	5

Notes
Contractor to confirm numbers on site prior to ordering planting stock.

NOTE: CONTRACTOR TO CONFIRM LOCATION OF ALL SERVICES AND INFRASTRUCTURE PRIOR TO INITIATING LANDSCAPE WORKS.

ISSUE	REASON FOR ISSUE	DATE	DESIGN	CHECKED
A	Draft for client review	09.04.2025	ZK	PG
B	For Approval	22.04.2025	ZK	PG

CLIENT

LAXDTX 2 Pty Ltd

CONSULTANT

PLOT

DESIGN GROUP

CONTACT DETAILS

PRIMARY CONTACT: PHOEBE GORDON

EMAIL: phoebeg@plotdesigngroup.com.au

PHONE: 0422 917 937

ABN: 19629570396

ASSOCIATED CONSULTANTS

ARCHITECT: Walsh Architects

PROJECT

32 Golf Avenue

Mona Vale NSW

DRAWING

LANDSCAPE PLAN (PLANTERS) - SHEET 2

PROJECT No

25-576

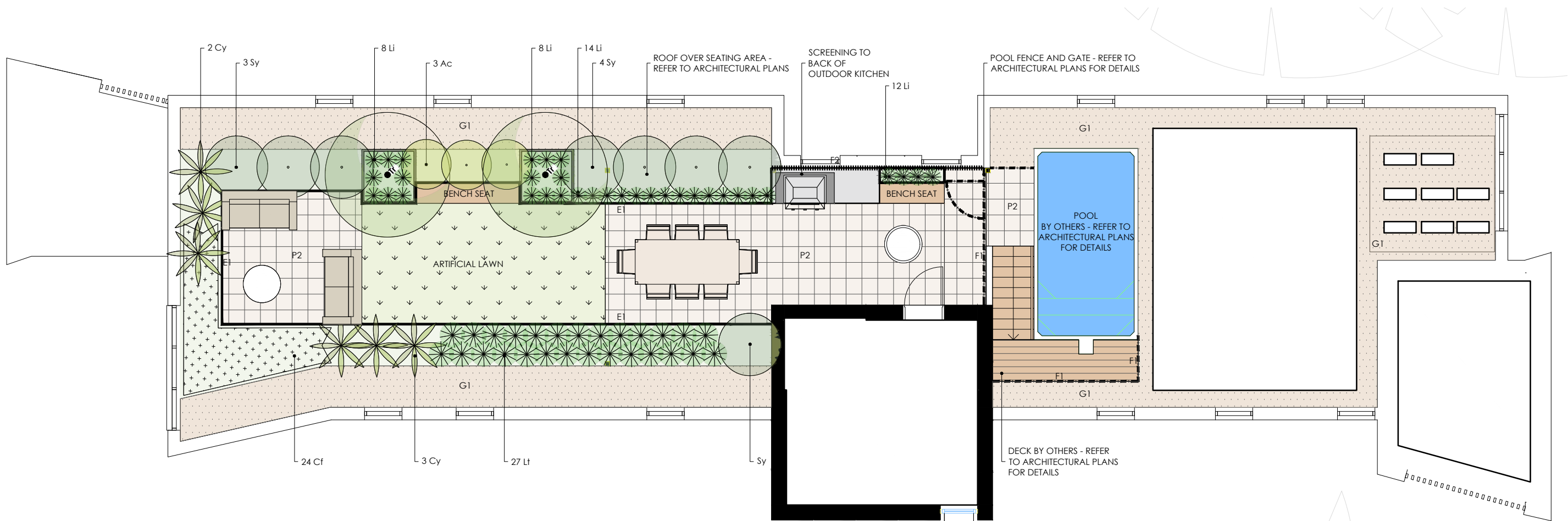
DRAWING No.

LS501.2

ISSUE

B

SCALE



PLANTING TABLE

Code	Botanical Name	Common Name	Height (m)	Width (m)	Density	Pot Size	No
Trees							
Tr	<i>Tristaniopsis laurina</i> 'Luscious'	Water Gum	5m	3m	As Shown	300mm	2
Shrubs							
Ac	<i>Acacia cognata</i> 'Limelight'	Bower Wattle	1m	1m	0.9mC	140mm	3
Sy	<i>Syzygium australe</i> 'Resilience'	Lily Pily	4m	1.5m	1.2mC	200mm	8
Accent Plants							
Cy	<i>Cycad revoluta</i>	Sago Palm	2m	1.5m	As Shown	200mm	6
Flaxes / Grasses							
Li	<i>Liriope muscari</i> 'Just Right'	Lily Turf	0.4m	0.4m	0.3m C	140mm	34
Lt	<i>Lomandra longifolia</i> 'Tanika'	Matt Rush	0.6m	0.6m	0.5mC	140mm	27
Groundcovers							
Cf	<i>Casuarina glauca</i>	Cousin it Casuarina	0.1m	1m	4/m²	140mm	24

Notes
Contractor to confirm numbers on site prior to ordering planting stock.

PLANTING IMAGERY



Tristaniopsis laurina 'Luscious' (in pot)



Acacia cognata 'Limelight'



Syzygium 'Resilience'



Cycas revoluta



Liriope muscari 'Just Right'



Lomandra longifolia 'Tanika'



Casuarina glauca 'Cousin It'

LEGEND

SITE BOUNDARY

HARD ELEMENTS

PAVING TYPE 1
Unit pavers - colour to match balcony tiling

GRAVEL TYPE 1
Gravel ballast to roof - refer to architectural plans for details

EDGING TYPE 1
Proposed planter box
PLANTER BOX TYPE 1
Refer to architectural and engineers plans for details

FENCE TYPE 1
Refer to architectural plans for details

FENCE TYPE 2
Timber batten screening.
Height: 1800mm

DECK BY OTHERS

Refer to architectural plans for details

SOFT ELEMENTS

SHRUB BED TYPE 2
Planter box - refer to architectural plans

TURF
Type: Artificial Lawn

PROPOSED TREES

PROPOSED SHRUBS AND
ACCENT PLANTS

PROPOSED GROUNDCOVER/
MASS PLANTING

Notes:
- Mature height and width of planting dependent upon site conditions, aspect and water requirements.
- All gardens and turf should be adequately irrigated.
- All areas and extents to be confirmed and checked on site prior to initiating construction.
- Refer to engineering drawings and architectural plans for retaining wall details, water proofing, heights and dimensions of outdoor spaces. Pools by others.
- Refer to architectural plans for tree management requirements.
Trees to be protected in accordance with State and council requirements. -Refer to 06/503.1 for planting table

NOTE: CONTRACTOR TO CONFIRM LOCATION OF ALL SERVICES AND INFRASTRUCTURE PRIOR TO INITIATING LANDSCAPE WORKS.



ISSUE	REASON FOR ISSUE	DATE	DESIGN	CHECKED
A	Draft for client review	09.04.2025	ZK	PG
B	For Approval	08.05.2025	ZK	PG

CLIENT
LAXDTX 2 Pty Ltd

CONSULTANT
PLOT
DESIGN GROUP

CONTACT DETAILS
PRIMARY CONTACT: PHOEBE GORDON
EMAIL: phoebeg@plotdesigngroup.com.au
PHONE: 0422 917 937
ABN: 19629570396

ASSOCIATED CONSULTANTS
ARCHITECT: Walsh Architects

PROJECT
32 Golf Avenue
Mona Vale NSW

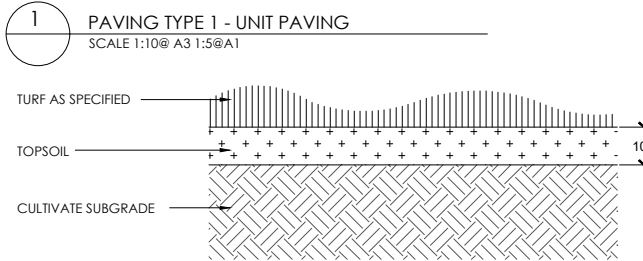
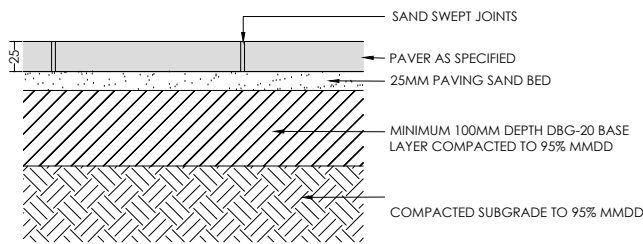
DRAWING
LANDSCAPE PLAN (ROOF PLAN) - SHEET 3

PROJECT No
25-576

DRAWING No.
LS501.3

ISSUE
B

SCALE
1:50 1:100



1 PAVING TYPE 1 - UNIT PAVING
SCALE 1:10@ A3 1:5@A1



Acacia longifolia*



Banksia ericifolia*



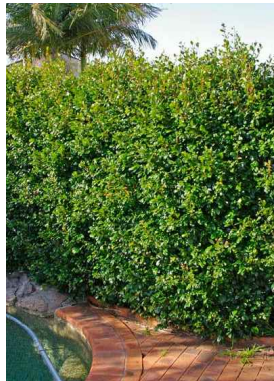
Melaleuca linearifolia*



Eucalyptus botryoides*



Banksia spinulosa 'Birthday Candles'



Syzygium australe 'Resilience'



Dianella caerulea*



Blechnum 'Silver Lady'



Correa glabra 'Winter Glow'



Ceratopetrum gummiferum*



Callistemon citrinus 'Endeavour'*



Leptospermum laevigatum*



Ficus pumila



Hibbertia scandens*



Ficinea nodosa*



Lomandra longifolia 'Tanika'*



Cordyline australis



Dicksonia antarctica

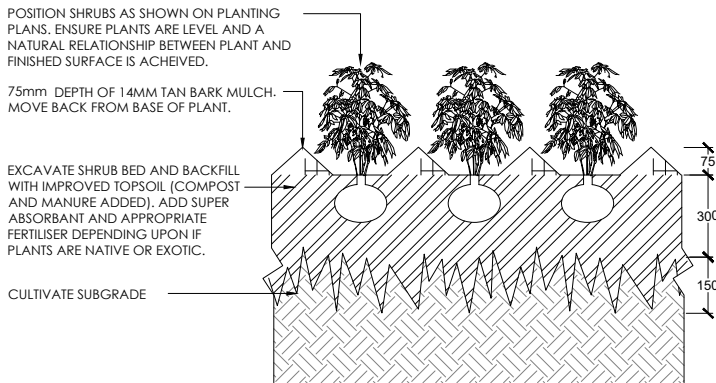


Xanthorrhoea johnsonii*

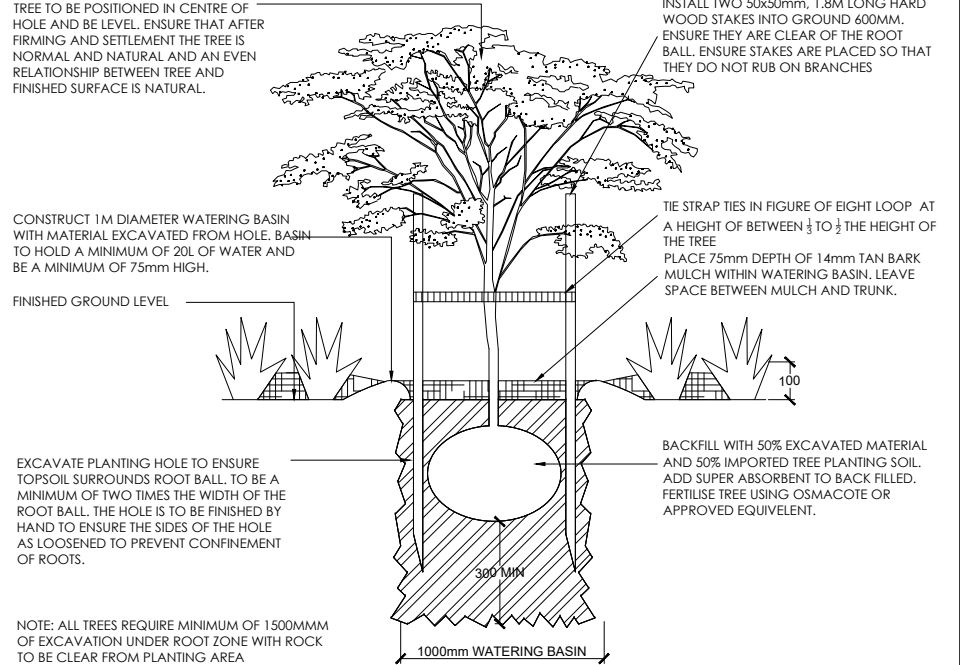


Scavaola ramosissima*

3 TURF
SCALE 1:20@ A3 1:10@A1



2 SHRUB / TUBE PLANTING
SCALE 1:20@ A3 1:10@A1



TREE PLANTING
SCALE 1:40@ A3 1:20@A1

LANDSCAPE SPECIFICATION NOTES

SITE PREPARATION
Locate any underground and overground services & ensure no damage occurs. Levels on plan are nominal only & all dimensions to be checked on site prior to commencement. Final structural integrity of all items shall be the sole responsibility of landscape contractor.

PROTECTION OF EXISTING TREES:
Prior to commencement of work, a continuous Tree Protection Fence shall be erected around the perimeter of the Tree Protection Zone (TPZ) in accordance with the tree protection requirements set out in the associated arboricultural report. The Tree Protection Fence shall be a minimum of 1800mm high chain link fabric or 50 0mm GVI pipe anchor posts driven 600mm into the ground. Take necessary precautions to protect the Structural Root Zone (SRZ) as per AS 4970-2009 Australian Standard for Protection of Trees on Development Sites. Tree protection measures shall remain intact until the completion of all construction works. A 600mm x 450mm prohibition sign complying with ASB319 stating "NO ENTRY - TREE PROTECTION ZONE" and including contact details of the site foreman is to be attached to the fence.

Prohibited Works or material storage within the TPZ as per AS 4970-2009 except with approval of council:

- entry of machinery or storage of building materials
- parking of any kind of vehicle
- erection or placement of site facilities
- removal or stockpiling of soil or site debris
- disposal of liquid waste including paint & concrete wash
- excavation or trenching of any kind (including irrigation or electrical connections).
- attaching any signs or any other objects to the tree
- placement of waste disposal or skip bins
- pruning and removal of branches, other than those by a qualified Arborist

Compacted Ground/Coring: Avoid compaction of the ground under trees. If compaction nevertheless occurs loosen the soil by Coring. Coring to be carried out by a qualified Arborist.

ELIMINATE WEEDS
Remove all existing weeds by hand, wiping or spraying with a glyphosate based herbicide. Weed control shall never be performed by mechanical cultivation or by scraping. Herbicide spraying is to be used to eliminate all existing weeds 30 days prior to planting.

EXCAVATION & SUB SOIL PREPARATION
Excavate garden beds to the depth required and rip or scarify base & sides of pit to a minimum depth of 150mm.

SUB SOIL DRAINAGE
Install drainage layer where there is surface water runoff draining into garden bed areas & where the existing sub-soil has more than 50% clay composition & there is a risk of subsurface water ponding. Install perforated corrugated ag. line 75-100mm Dia. with geotextile filter sock & backfill to a minimum 200mm using free draining material, reclaimed/recycled where available. Direct flows at a minimum 0.5% fall to sw system. In areas isolated from stormwater system excavate & backfill an appropriate water dispersion pit.

REUSE EXISTING TOPSOIL
Existing site topsoil should be salvaged & appropriately stockpiled where possible.

IMPORTED TOPSOIL
Quality System: AS 4419 or as specified below.
Turf Areas: 'Turf Underlay' as supplied by, ANL p: 02 9450 1444 or approved alternative.
Tree Pit and Shrub Planting: 'Premium Garden Mix' as supplied by, ANL p: 02 9450 1444 or approved alternative.

PLANTING
Health & Vigour: Supply plants with foliage size, texture & colour consistent with that shown in healthy specimens of the species. Balance of Crown: Supply plants with max. variation in crown bulk on opposite sides of stem axis, +/- 20%. Stock selection should be based on NATSPEC Guide Specifying Trees: a Guide to Assessment of Tree Quality.

STAKING
Install 2 x 1800mm 40x40 hardwood timber stakes with hessian ties to all trees. Provide appropriate support considering exposure to prevailing winds. Stakes and hessian ties to be removed as soon as the tree is self supporting.

MULCHING
Quality system: AS 4454
All planting area to be mulched with 50mm depth of river pebbles unless otherwise specified. Keep mulch 100mm away from plant stem & form a well to stop excessive water runoff. Finish flush with adjacent surfaces.

TURFING
As specified.
Excavate / grade all areas to be turfed to 120mm below finished levels. Ensure that all surface runoff is directed away from buildings. Ensure that no pooling or ponding will occur. Further rip the subgrade to 150mm. Install 100mm of imported turf underlay. Rolls to be closely butted and laid in a brickwork pattern. Fill any small gaps with topsoil and water thoroughly.

WATERING
Water in immediately after plant installation & allow for soil settlement. For the first 2 to 4 weeks after planting, the root zone & immediate surrounds must be kept moist. Continue watering until plants have established.

All services and infrastructure locations are indicative only. Contractor to confirm location of all services and infrastructure prior to initiating landscape works.

6 PLANTING TABLE

	ISSUE	REASON FOR ISSUE	DATE	DESIGN	CHECKED	CLIENT LAXDTX 2 Pty Ltd	CONSULTANT PLOT DESIGN GROUP	CONTACT DETAILS PRIMARY CONTACT: PHOEBE GORDON EMAIL: phoebeg@plotdesigngroup.com.au PHONE: 0422 917 937 ABN: 19629570396	ASSOCIATED CONSULTANTS ARCHITECT: Walsh Architects	PROJECT 32 Golf Avenue Mona Vale NSW	DRAWING LANDSCAPE DETAILS - SHEET 4	SCALE VARIES
	A	Draft for client review	09.04.2025	ZK	PG						PROJECT No 25-576	
	B	For Approval	22.04.2025	ZK	PG						DRAWING No. LS503.1	ISSUE B

NOTE: CONTRACTOR TO CONFIRM LOCATION OF ALL SERVICES AND INFRASTRUCTURE PRIOR TO INITIATING LANDSCAPE WORKS.