

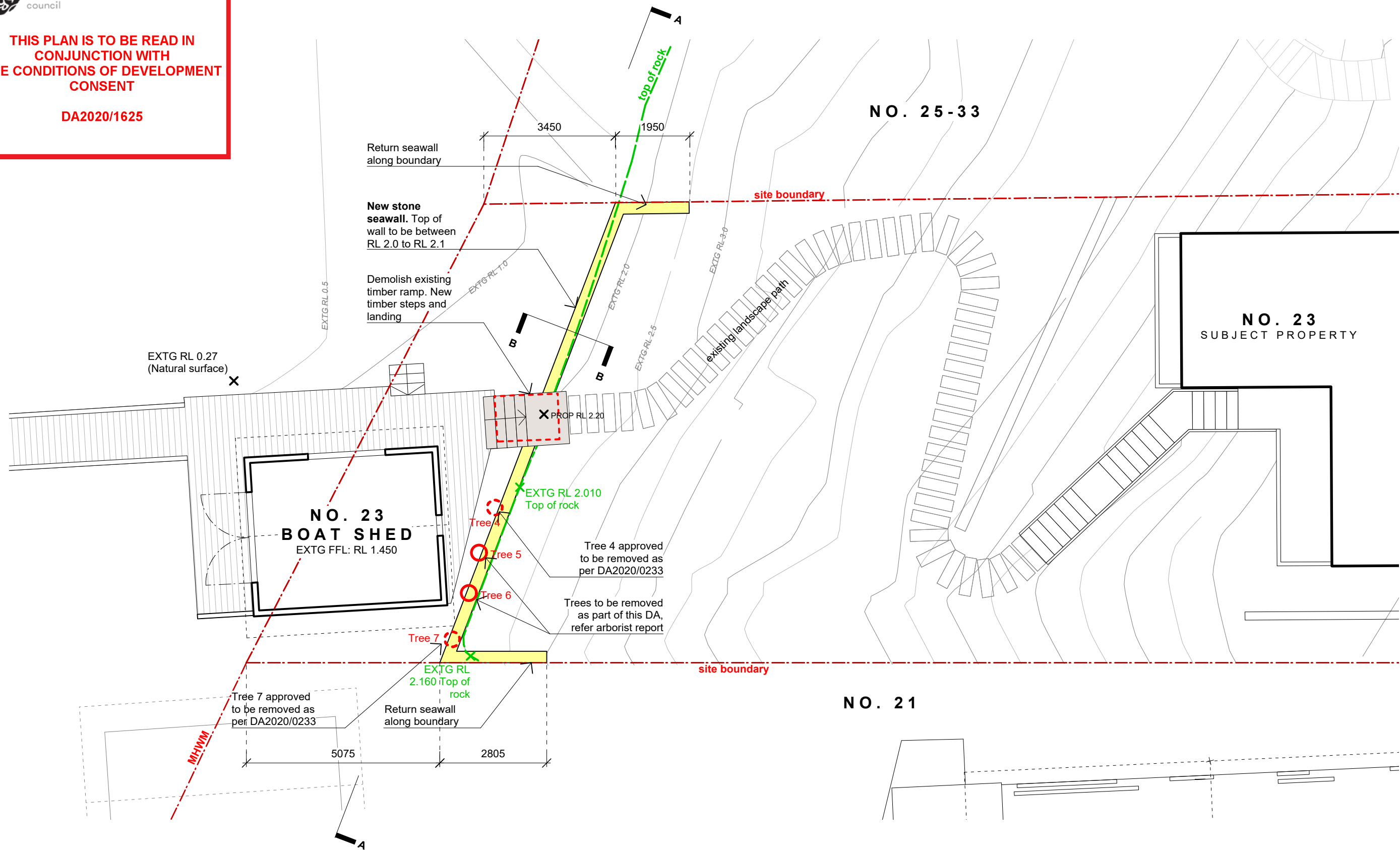




northern  
beaches  
council

THIS PLAN IS TO BE READ IN  
CONJUNCTION WITH  
THE CONDITIONS OF DEVELOPMENT  
CONSENT

DA2020/1625



FOR DEVELOPMENT APPLICATION


DESCRIPTION	REV	APP'D	DATE	<div>samcrawfordarchitects</div> <div>Level 2, 17 Federation Rd, Newtown, Australia NSW 2042</div> <div>TELEPHONE +612 9519 6800 FAX +612 9519 6967</div> <div>EMAIL studio@samcrawfordarchitects.com.au WEB samcrawfordarchitects.com.au</div> <div>ACN 165 409 567 Nominated Architect Sam Crawford 6498</div>	CLIENT	FAR EAST LAND & HOUSING DEVELOPMENT COMPANY PTE LTD	<div>NORTH POINT</div> <div></div>	SCALE @ A3	PROJECT NO.	STAGE	DRAWING NO.	REV
FOR DA SUBMISSION	1	SC	2/12/20		PROJECT	23 ROBERTSON ROAD		1:100	16.18	AA	100	2
SECTION & ELEVATION MARKERS ADDED	2	SC	19/12/20		SCOTLAND ISLAND, NSW 2105	GROUND PLAN						



**THIS PLAN IS TO BE READ IN  
CONJUNCTION WITH  
THE CONDITIONS OF DEVELOPMENT  
CONSENT**

DA2020/1625

FOR DEVELOPMENT APPLICATION

DESCRIPTION FOR DA SUBMISSION	REV 1	APP'D SC	DATE 2/12/20	<div><div>samcrawfordarchitects</div><div>Level 2, 17 Federation Rd, Newtown, Australia NSW 2042 TELEPHONE +612 9519 6800 FAX +612 9519 6967 EMAIL studio@samcrawfordarchitects.com.au WEB samcrawfordarchitects.com.au ACN 165 409 567 Nominated Architect Sam Crawford 6498</div></div>	CLIENT FAR EAST LAND & HOUSING DEVELOPMENT COMPANY PTE LTD	<div><div>NORTH POINT</div><div></div></div>	SCALE @ A3 N.T.S.	PROJECT NO. 16.18	STAGE AA	DRAWING NO. 200	REV 1
	PROJECT 23 ROBERTSON ROAD SCOTLAND ISLAND, NSW 2105						DRAWING TITLE EXTERNAL MATERIALS & FINISHES				





