

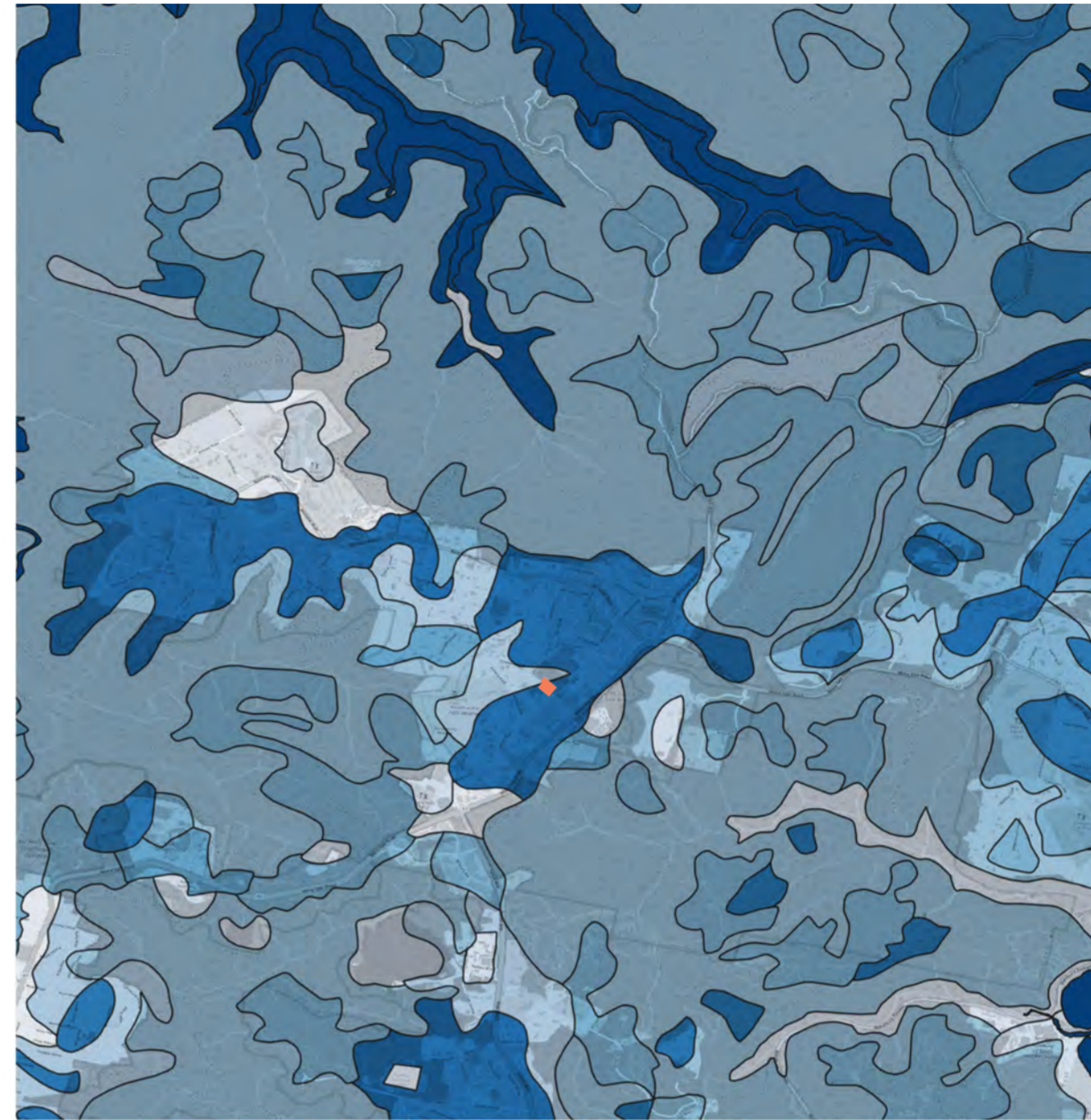
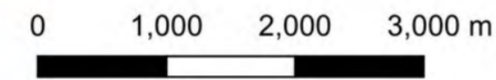
Client German International School Sydney
Date December 2021
Project Science Centre and Administration Extension
Drawing Package Development Application
Architect Knut Menden

Drawing List:
Landscape Analysis
Landscape Principles
Landscape Tree Plan
Landscape Layout Plan
Landscape Sections
Landscape Materials
Landscape Planting

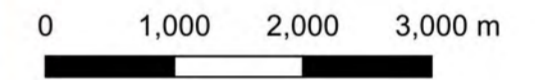




- Vegetation Communities**
- sydney_rbg_VISmap_2354
- Cleared
 - Coastal Sandstone Heath
 - Duffys Forest
 - Estuarine Complex
 - Narrabeen Slopes Forest
 - Sydney Sandstone Gully Forest
 - Sydney Sandstone Ridgetop Woodland



- Soils**
- Sydney_SL100K_v4_GDA94
- BLACKTOWN
 - DEEP CREEK
 - DISTURBED TERRAIN
 - FAULCONBRIDGE
 - GLENORIE
 - GYMEA
 - HAWKESBURY
 - HORNSBY
 - LAMBERT
 - LUCAS HEIGHTS
 - NEWPORT
 - OXFORD FALLS
 - SOMERSBY
 - WATAGAN
 - WATER



- 1 Vegetation 1:100 000 Map Sheet identifies**
- site has been cleared in the past;
 - Sydney Sandstone Ridgetop Woodland exists in the immediate vicinity at the same height and soil profile.

- 2 Sydney Sandstone Ridgetop Woodland - Species recorded on site (03.11.2021):**
- Actinotis minor (1)
 - Banksia ericifolia
 - Bauera microphylla (2)
 - Boronia parviflora (3)
 - Corymbia gummifera;
 - Dampiera stricta (4)
 - Eucalyptus haemastoma;
 - Gahnia sieberana (5)
 - Gleichenia microphylla (6)
 - Hakea teretifolia.
- See over for images



- 1 Soils**
- Mainly Somesby with a pocket of GyMEA soil in the northern corner of the site;
 - Both profiles are underlain with Hawkesbury Sandstone.

- 3 GyMEA Soil**
- Often stony;
 - Low fertility;
 - Confined to area outside the building line.

- 2 Somesby Soil**
- Often stony, with laterite gravels;
 - Low to very low fertility;
 - Localised water logging (evident on the hospital site across the NE boundary);
 - Moderately deep -1 - 3m;
 - Hardsetting.

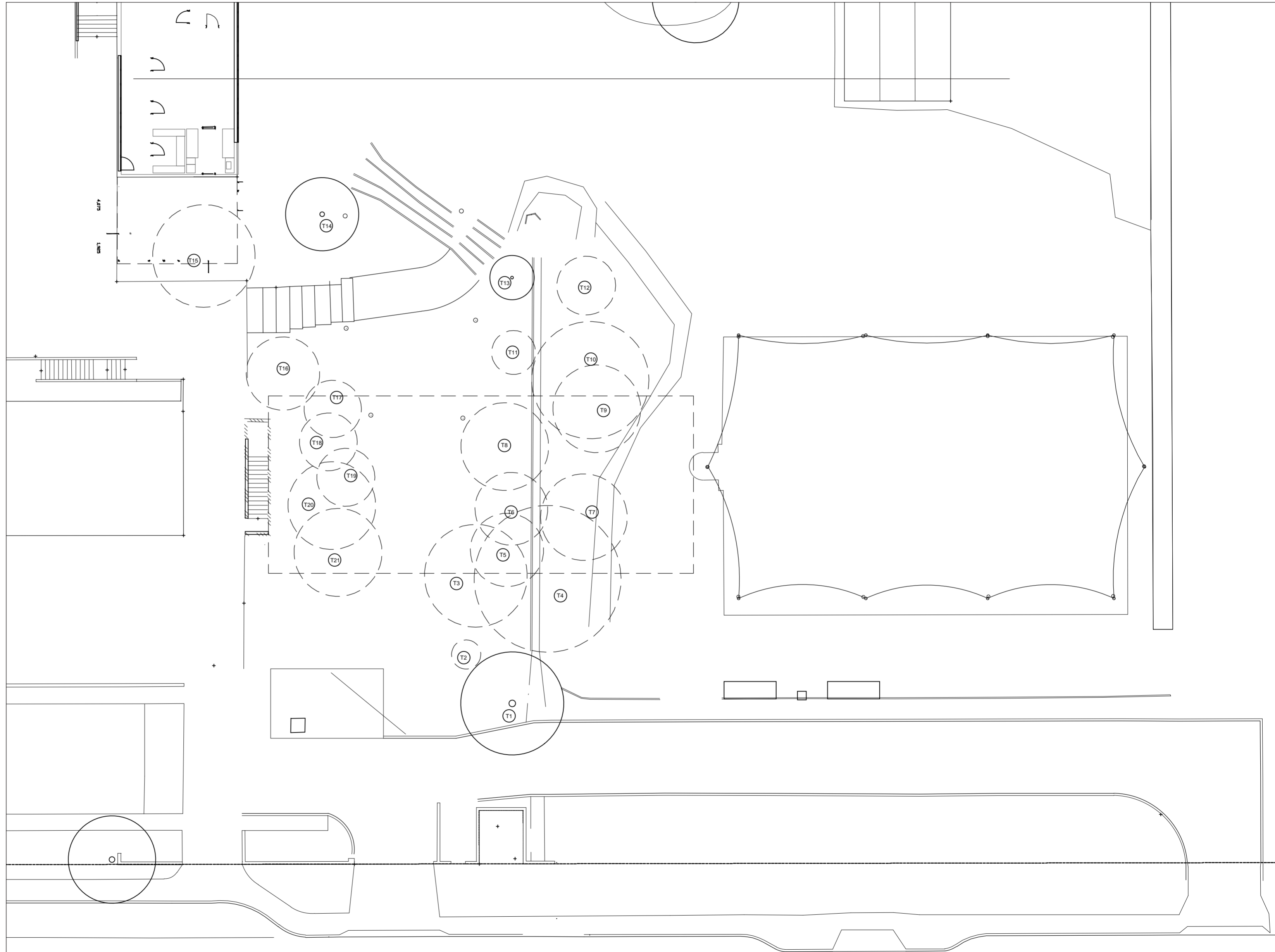




Site Images
1-6: Vegetation in northern corner of site (outside subject area) - refer to previous page for species
7-10: Campus character
11-13: Existing materials

Existing Trees Affected by this Proposal
- Refer to Arboricultural Impact Assessment prepared by High
Millicent dated 21 October 2021

Tree No.	Species	Action
1	Waterhousia floribunda	Retain
2	Banksia integrifolia	Remove
3	Casuarina glauca	Remove
4	Alnus jorullensis	Remove
5	Waterhousia floribunda	Remove
6	Waterhousia floribunda	Remove
7	Eucalyptus haemastoma	Remove
8	Waterhousia floribunda	Remove
9	Eucalyptus haemastoma	Remove
10	Acacia spp.	Remove
11	Syzygium smithii	Remove
12	Eucalyptus haemastoma	Remove
13	Waterhousia floribunda	Retain
14	Waterhousia floribunda	Retain
15	Ulmus parvifolia	Remove
16	Waterhousia floribunda	Remove
17	Waterhousia floribunda	Remove
18	Waterhousia floribunda	Remove
19	Waterhousia floribunda	Remove
20	Waterhousia floribunda	Remove
21	Waterhousia floribunda	Remove



1:200 @ A2 0 2 4 6 8m

Landscape Plan

- 1 Forecourt to Reception and Administration
- 2 Visitor entrance to School
- 3 Stair from Reception to Science Building with timber seating and planting incorporated (see exemplar page)
- 4 Decomposed granite surface to forecourt of Science Building
- 5 Turf
- 6 Seating walls (maximum 500mm high)
- 7 Stairs through seating walls
- 8 Planting - native understorey
- 9 Existing tree - retain and protect
- 9 Tree planting - indigenous trees
- 10 Drainage pit
- 11 Timber terraces
- 12 Turf terraces
- 13 Fire egress stair
- 14 Mass planting between sports field and driveway
- 15 Driveway and bus parking
- 16 Tree planting
- 17 Accessible walkway to access Science Building
- 18 Accessible car space
- 19 Path to access bus parking
- 20 Terraces for outdoor learning (maximum 500mm high) - reuse existing site stone
- 21 Underground OSD
- 22 Central lawn space
- 23 Roof Garden
- 24 Section A (see over)
- 25 Section B (see over)

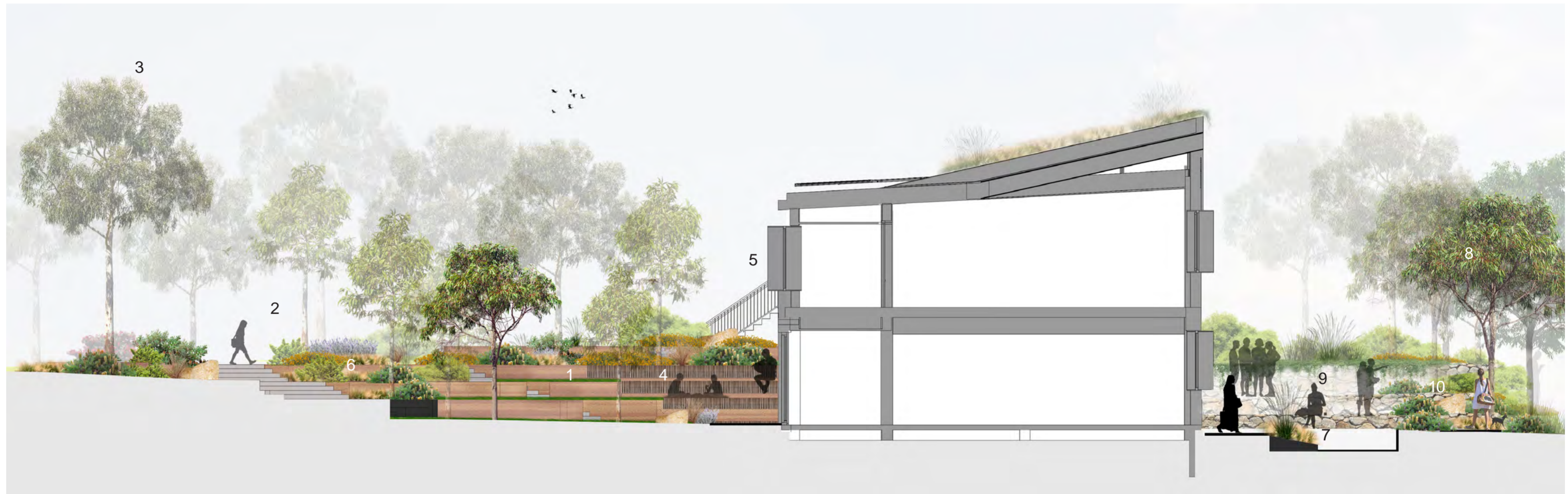


Landscape Section A

- 1 Turf terraces
- 2 Stairs through seating walls
- 3 Tree planting - indigenous trees
- 4 Seating walls (maximum 500mm high)
- 5 Fire egress stair
- 6 Mass planting
- 7 Accessible walkway to access Science Building
- 8 Existing tree - retain and protect
- 9 Terraces for outdoor learning (maximum 500mm high) - reuse existing site stone
- 10 Path to access bus parking

Landscape Section B

- 11 Entrance to administration and reception
- 12 Stairs with integrated seating
- 13 Tree planting - indigenous trees
- 14 Stairs through seating walls
- 15 Seating walls (maximum 500mm high)
- 16 Mass planting
- 17 Terraces for outdoor learning (maximum 500mm high)



Section A



Section B



1 Planting Criteria

Selecting Tree Species for Schools

- non-allergenic;
- not known as asthma triggers;
- not poisonous;
- not weeds or invasive in the local area;
- unlikely to drop limbs (note: not all eucalypts, angophoras and corymbias drop limbs);
- well suited to the climate and soil type of the school;
- resilient to predicted climate change;
- mix of sizes from small to large;
- mix of flowering and non-flowering;
- mix of indigenous and non-indigenous natives;
- should include some trees that will create habitat for native fauna;
- there should be at least one large, iconic tree on campus.

3 Materials

- Natural and local materials
- earth-rammed walls from site soil (11);
 - timber seating;
 - hard wearing turf;
 - recycled timber (from on site) (12);
 - decomposed granite (13).

2 Indicative Planting Schedule

Plants are indicative of the character - the list may need to be developed and amended to respond to nursery availability.

Trees	Botanical Name	Common Name	Installation Size	Mature Height	Mature Width
	<i>Casuarina glauca</i>	Swamp Oak	75L	12m	7m
	<i>Corymbia eximia</i> (3)	Yellow Bloodwood	75L	15m	15m
	<i>Corymbia gummifera</i>	Red Bloodwood	75L	15m	15m
	<i>Eucalyptus haemastoma</i> (1)	Scribbly Gum	75L	10m	10m
	<i>Waterhousia floribunda</i> (2)	Weeping Lily Pilly	75L	10m	8m
Shrubs	Botanical Name	Common Name	Installation Size	Mature Height	Mature Width
	<i>Banksia ericifolia</i>	Heath Banksia	5L	4m	2m
	<i>Correa alba</i>	White Correa	5L	1.5m	1.5m
	<i>Grevillea juniperina 'Molongolo'</i> (10)	Molongolo	2.5L	800mm	1m
	<i>Grevillea 'Scarlet Sprite'</i> (8)	Dwarf Grevillea	2.5L	800mm	800mm
	<i>Grevillea sericea</i>	Silky Grevillea	2.5L	1.2m	1m
	<i>Isopogon anemonifolius 'Little Drumsticks'</i>	Dwarf Isopogon	2.5L	500mm	600mm
	<i>Leptospermum laevigatum</i>	Coastal Tea Tree	5L	3m	2m
	<i>Melaleuca thymifolia</i>	Thyme Honey Myrtle	5L	1m	1m
	<i>Philotheca myoporoides</i>	Long Leaf Wax Flower	5L	800mm	800mm
	<i>Pimelea ferruginea 'Bonne Petite'</i>	Dwarf River Flower	2.5L	700mm	700mm
	<i>Westringia fruticosa</i>	Coastal Rosemary	5L	1.5m	1m
Groundcovers and Perennials	Botanical Name	Common Name	Installation Size	Mature Height	Mature Width
	<i>Acacia baileyana 'Prostrate'</i>	Prostrate Cootamundra Wattle	2.5L	300mm	1.5m
	<i>Acacia cardiophylla 'Gold Lace'</i>	Prostrate Wyalong Wattle	2.5L	300mm	2m
	<i>Acacia pravissima 'Bushwalk Baby'</i>	Prostrate Ovens Wattle	2.5L	300mm	1.5m
	<i>Anigozanthos 'Bush Revolution'</i>	Tall Kangaroo Paw	2.5L	2m	2m
	<i>Banksia 'Birthday Candles'</i> (5)	Groundcover Banksia	2.5L	500mm	800mm
	<i>Carex appressa</i>	Tall Sedge	2.5L	1m	1m
	<i>Carpobrotus glaucescens</i>	Giant Pigface	2.5L	200mm	1.5m
	<i>Casuarina 'Kattang Karpel'</i>	Cousin It	2.5L	200mm	1.5m
	<i>Chrysocephalum apiculatum</i>	Yellow Buttons	2.5L	500mm	500mm
	<i>Doryanthes excelsa</i> (4)	Gymea Lily	45L	1.5m	1.5m
	<i>Ficinia nodosa</i>	Knobby Club Rush	2.5L	500mm	500mm
	<i>Hardenbergia 'Meema'</i>	Dwarf Happy Wanderer	2.5L	200mm	1.5m
	<i>Hardenbergia violacea</i> (6)	Happy Wanderer	2.5L	200mm	1.5m
	<i>Helichrysum petiolare</i>	Licorice Plant	2.5L	500mm	1.5m
	<i>Lomandra 'Lime Tuff'</i>	Lime Mat Rush	2.5L	600mm	600mm
	<i>Lomandra longifolia</i>	Mat Rush	2.5L	600mm	600mm
	<i>Myoporum parvifolium</i> (7)	Creeping Boobialla	2.5L	100mm	1.5m
	<i>Westringia 'Mundi'</i> (9)	Prostrate Coastal Rosemary	2.5L	300mm	1.5m
Roof Garden	Botanical Name	Common Name	Installation Size	Mature Height	Mature Width
	<i>Carpobrotus glaucescens</i>	Giant Pigface	2.5L	200mm	1.5m

