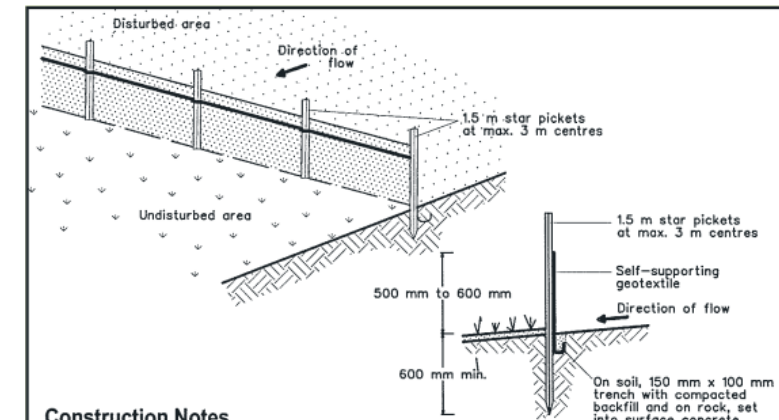
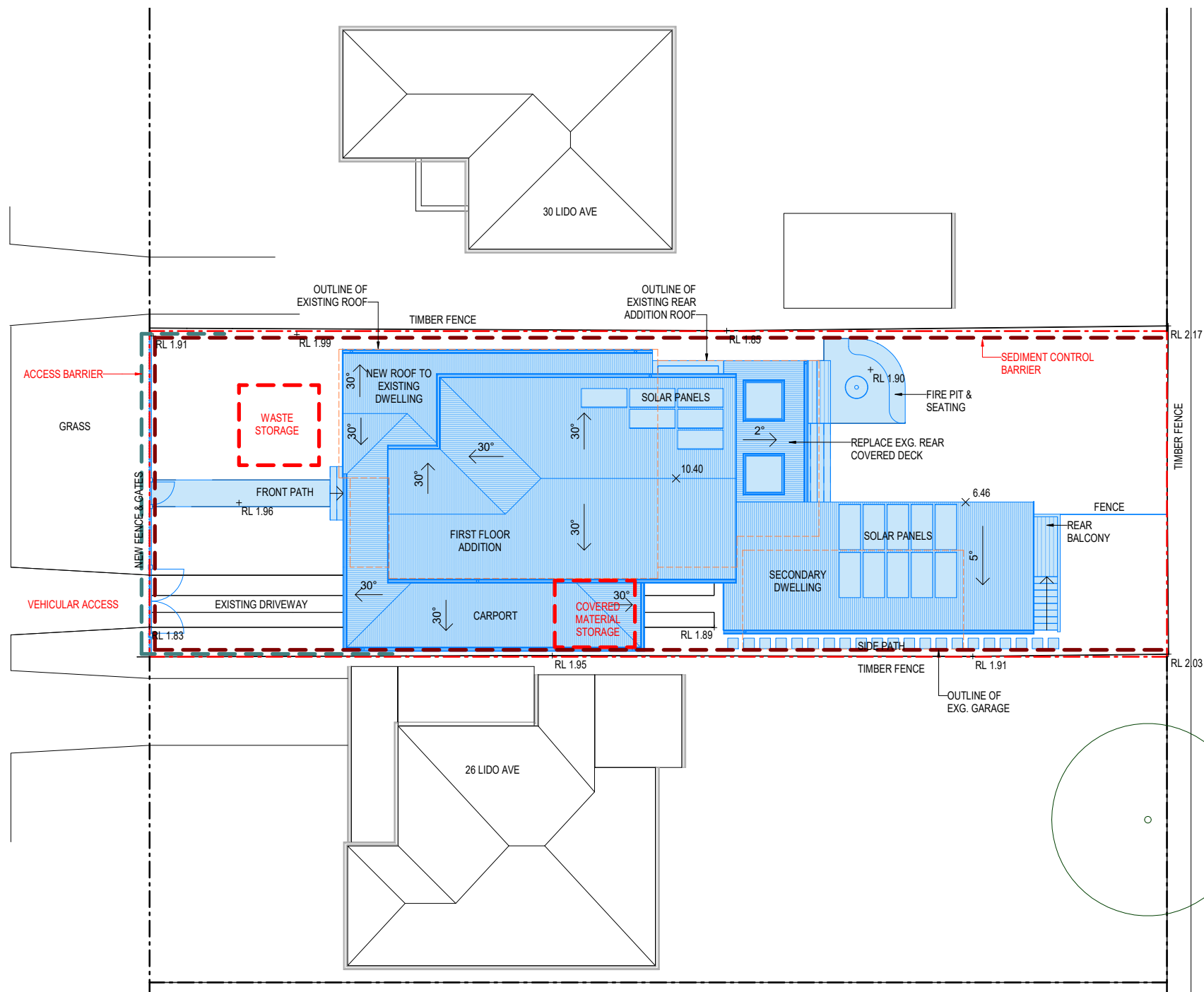


L I D O   A V E N U E



#### Construction Notes

1. Construct sediment fence as close as possible to parallel to the contours of the site.
2. Drive 1.5 metre long star pickets into ground, 2.5 metres apart (max.).
3. Dig a 150 mm deep trench along the upslope line of the fence for the bottom of the fabric to be entrenched.
4. Fix self-supporting geotextile to upslope side of posts with wire ties or as recommended by geotextile manufacturer.
5. Join sections of fabric at a support post with a 150 mm overlap.
6. Backfill the trench over the base of the fabric and compact it thoroughly over the geotextile

SECTION DETAIL

SEDIMENT FENCE

SD 6-8

SEDIMENT BARRIER

ACCESS BARRIER

